

Data Path : Z:\pestpcbsrv\HPCHEM1\ECD_D\Data\PD030124\
 Data File : PD081892.D
 Signal(s) : Signal #1: ECD1A.ch Signal #2: ECD2B.ch
 Acq On : 01 Mar 2024 20:40
 Operator : AR\AJ
 Sample : INDB326
 Misc :
 ALS Vial : 16 Sample Multiplier: 1

Instrument :
 ECD_D
 ClientSampleId :
 INDB3153

Integration File signal 1: autoint1.e
 Integration File signal 2: autoint2.e
 Quant Time: Mar 01 22:17:11 2024
 Quant Method : Z:\pestpcbsrv\HPCHEM1\ECD_D\Method\PD021224CLP.M
 Quant Title : GC Extractables
 QLast Update : Mon Feb 12 17:06:05 2024
 Response via : Initial Calibration
 Integrator: ChemStation

Volume Inj. : 1 µl
 Signal #1 Phase : ZB-MR2 Signal #2 Phase: ZB-MR2
 Signal #1 Info : 30M x 0.32mm x0.5 Signal #2 Info : 30M x 0.32mm x 0.25µm

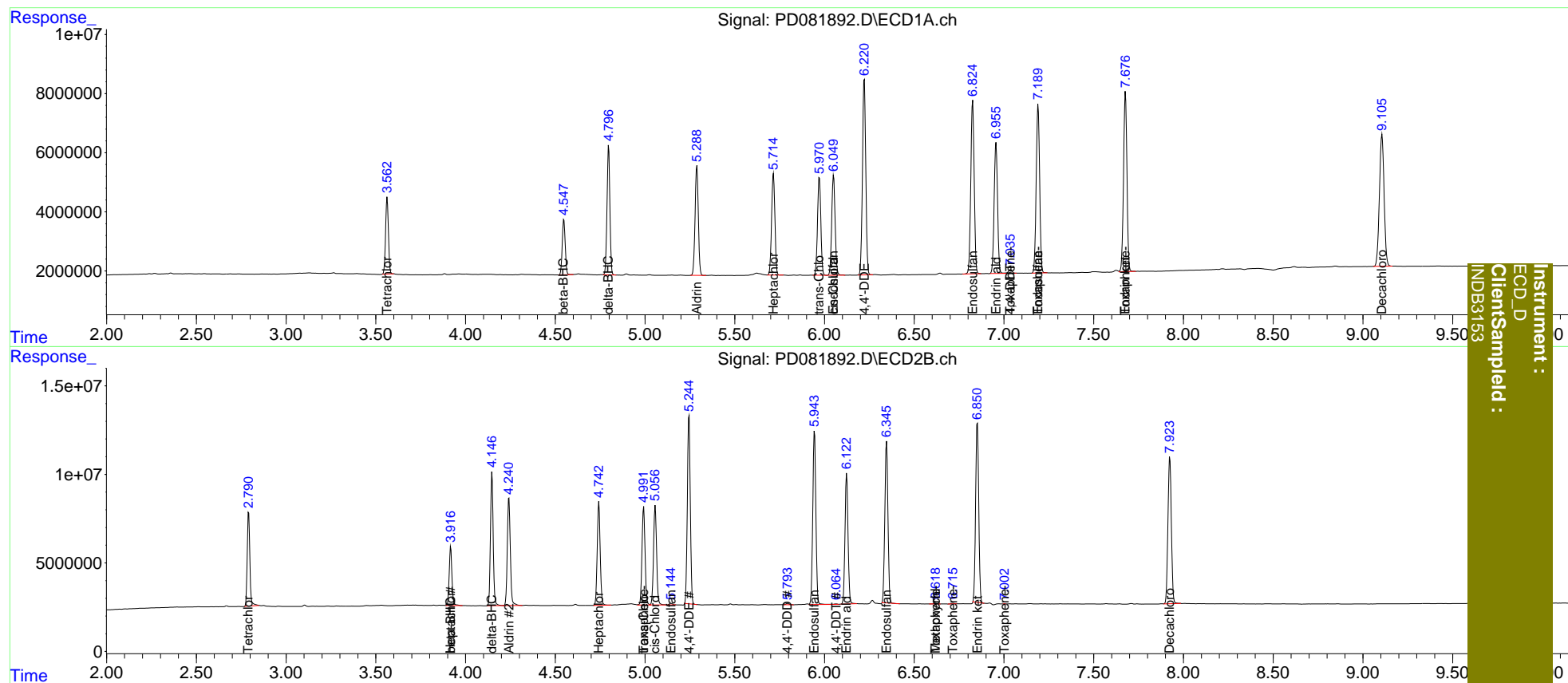
Compound	RT#1	RT#2	Resp#1	Resp#2	ng/ml	ng/ml
System Monitoring Compounds						
1) SA Tetrachlo...	3.563	2.792	28412886	53895991	20.783	21.984
27) SA Decachlor...	9.106	7.924	80938719	109.7E6	41.951	44.215
Target Compounds						
2) A alpha-BHC	0.000	3.283	0	127417	N.D.	<MDL
4) MA Heptachlor	0.000	3.917f	0	35472779	N.D.	10.000
5) MB Aldrin	5.289	4.242	46760640	71119691	19.776	20.997
6) B beta-BHC	4.548	3.917	21464980	35472779	20.655	20.994
7) B delta-BHC	4.797	4.147	48674442	79380438	20.551	21.198
8) B Heptachlo...	5.716	4.743	44090020	67388361	19.467	21.004
9) A Endosulfan I	6.051f	5.145	44359474	1002495	21.067	0.335 #
10) B trans-Chl...	5.971	4.993	42684839	65207416	19.496	20.896
11) B cis-Chlor...	6.051	5.057	44359474	66548051	19.695	20.774
12) B 4,4'-DDE	6.222	5.245	84644902	121.1E6	39.432	40.941
14) MA Endrin	0.000	5.667	0	268694	N.D.	<MDL
15) B Endosulfa...	6.826	5.944	77033208	116.9E6	39.904	41.415
16) A 4,4'-DDD	0.000	5.794	0	868505	N.D.	0.345
17) MA 4,4'-DDT	7.037	6.065	1767771	287716	1.018	0.111 #
18) B Endrin al...	6.956	6.124	58158464	86698449	38.933	40.009
19) B Endosulfa...	7.190	6.346	75504371	109.4E6	41.240	40.791
20) A Methoxychlor	0.000	6.619	0	522636	N.D.	0.391
21) B Endrin ke...	7.677	6.852	80440796	122.4E6	41.600	40.811
22) Toxaphene-1	0.000	4.993	0	65207416	N.D.	3982.816
24) Toxaphene-3	7.037f	6.619	1767771	522636	33.427	8.929 #
25) Toxaphene-4	7.190	6.717	75504371	392410	1908.722	4.931 #
26) Toxaphene-5	7.677f	7.003f	80440796	16033	2712.260	0.494 #

(f)=RT Delta > 1/2 Window (#)=Amounts differ by > 25% (m)=manual int.

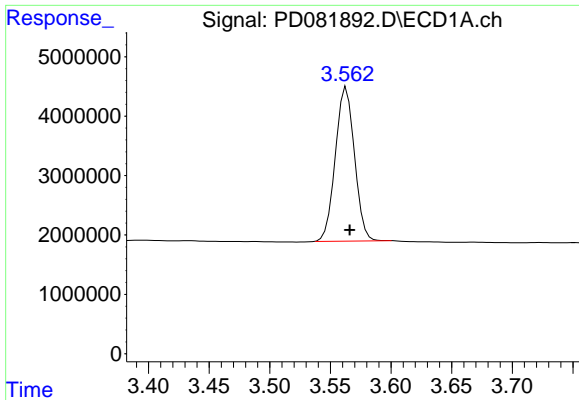
Data Path : Z:\pestpcbsrv\HPCHEM1\ECD_D\Data\PD030124\
 Data File : PD081892.D
 Signal(s) : Signal #1: ECD1A.ch Signal #2: ECD2B.ch
 Acq On : 01 Mar 2024 20:40
 Operator : AR\AJ
 Sample : INDB326
 Misc :
 ALS Vial : 16 Sample Multiplier: 1

Integration File signal 1: autoint1.e
 Integration File signal 2: autoint2.e
 Quant Time: Mar 01 22:17:11 2024
 Quant Method : Z:\pestpcbsrv\HPCHEM1\ECD_D\Method\PD021224CLP.M
 Quant Title : GC Extractables
 QLast Update : Mon Feb 12 17:06:05 2024
 Response via : Initial Calibration
 Integrator: ChemStation

Volume Inj. : 1 µl
 Signal #1 Phase : ZB-MR1 Signal #2 Phase: ZB-MR2
 Signal #1 Info : 30M x 0.32mm x0.5 Signal #2 Info : 30M x 0.32mm x 0.25µm



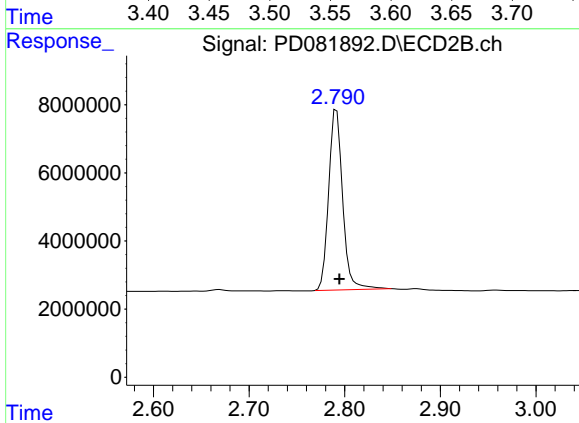
Instrument :
 ECD_D
 Client Sample ID :
 INDB3153



#1 Tetrachloro-m-xylene

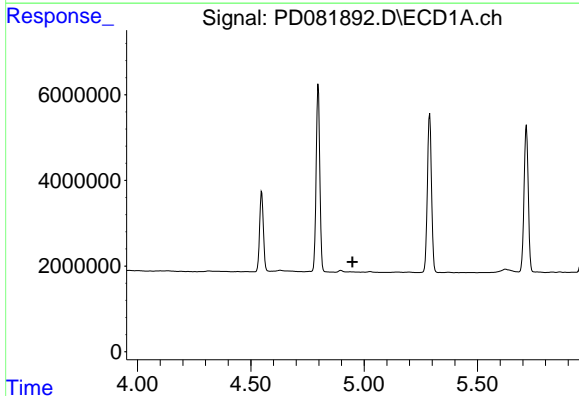
R.T.: 3.563 min
 Delta R.T.: -0.003 min
 Response: 28412886
 Conc: 20.78 ng/ml

Instrument :
 ECD_D
 ClientSampleId :
 INDB3153



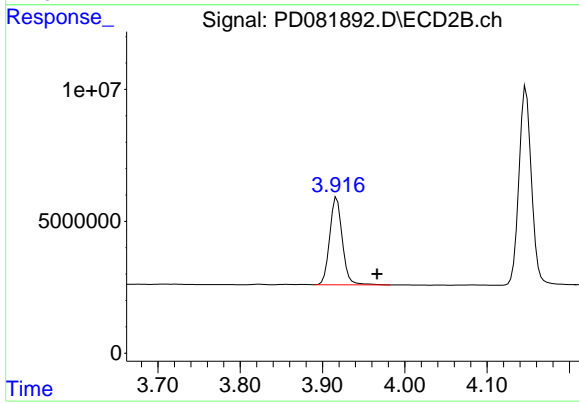
#1 Tetrachloro-m-xylene

R.T.: 2.792 min
 Delta R.T.: -0.003 min
 Response: 53895991
 Conc: 21.98 ng/ml



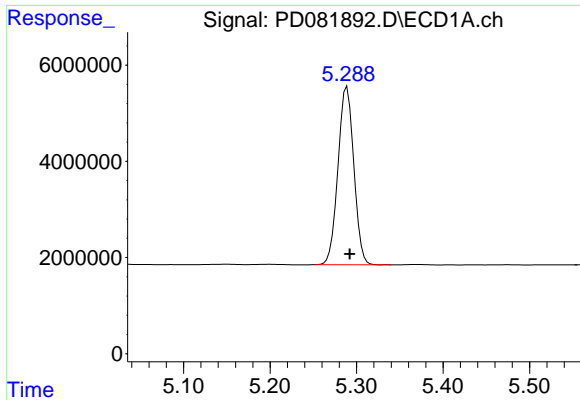
#4 Heptachlor

R.T.: 0.000 min
 Exp R.T. : 4.949 min
 Response: 0
 Conc: N.D.



#4 Heptachlor

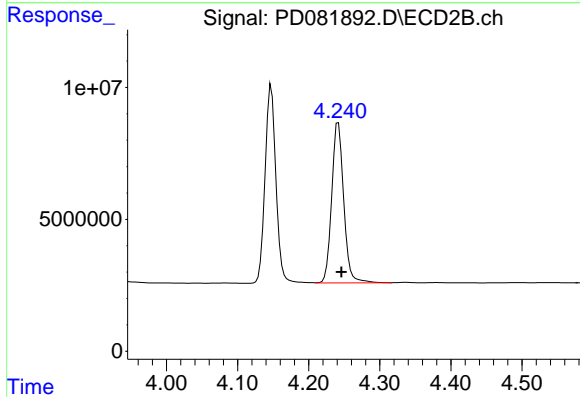
R.T.: 3.917 min
 Delta R.T.: -0.049 min
 Response: 35472779
 Conc: 10.00 ng/ml



#5 Aldrin

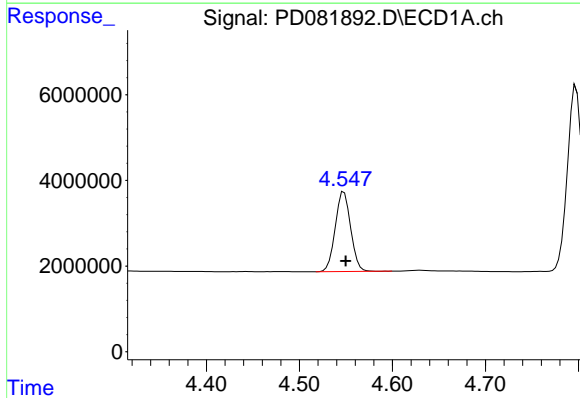
R.T.: 5.289 min
 Delta R.T.: -0.003 min
 Response: 46760640
 Conc: 19.78 ng/ml

Instrument :
 ECD_D
 ClientSampleId :
 INDB3153



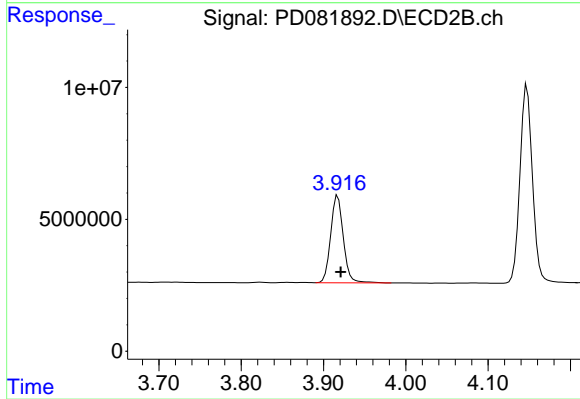
#5 Aldrin

R.T.: 4.242 min
 Delta R.T.: -0.005 min
 Response: 71119691
 Conc: 21.00 ng/ml



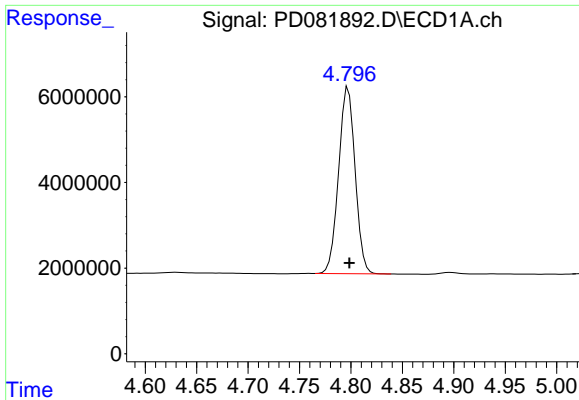
#6 beta-BHC

R.T.: 4.548 min
 Delta R.T.: -0.002 min
 Response: 21464980
 Conc: 20.65 ng/ml



#6 beta-BHC

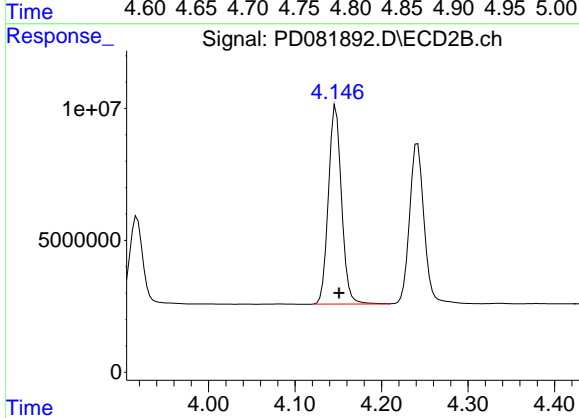
R.T.: 3.917 min
 Delta R.T.: -0.004 min
 Response: 35472779
 Conc: 20.99 ng/ml



#7 delta-BHC

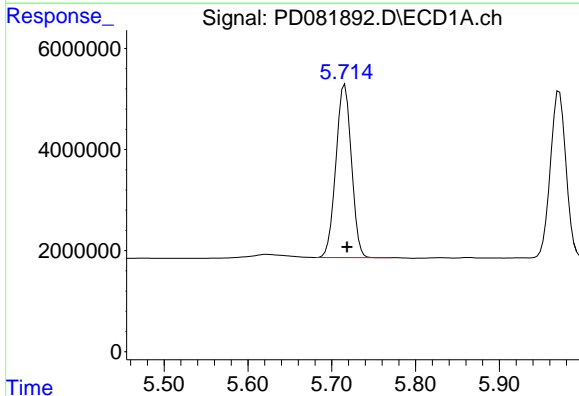
R.T.: 4.797 min
 Delta R.T.: -0.001 min
 Response: 48674442
 Conc: 20.55 ng/ml

Instrument :
 ECD_D
 ClientSampleId :
 INDB3153



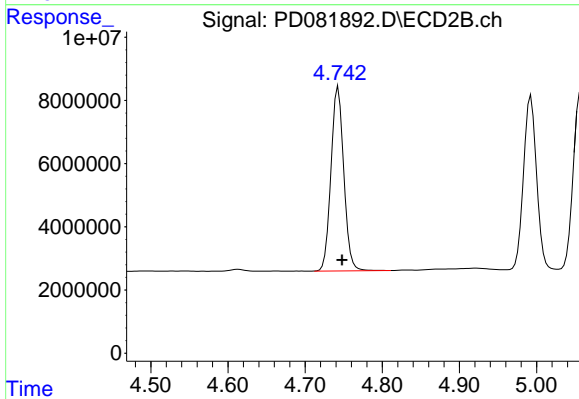
#7 delta-BHC

R.T.: 4.147 min
 Delta R.T.: -0.004 min
 Response: 79380438
 Conc: 21.20 ng/ml



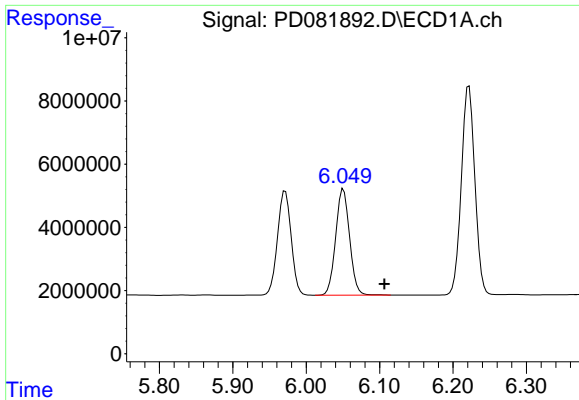
#8 Heptachlor epoxide

R.T.: 5.716 min
 Delta R.T.: -0.003 min
 Response: 44090020
 Conc: 19.47 ng/ml



#8 Heptachlor epoxide

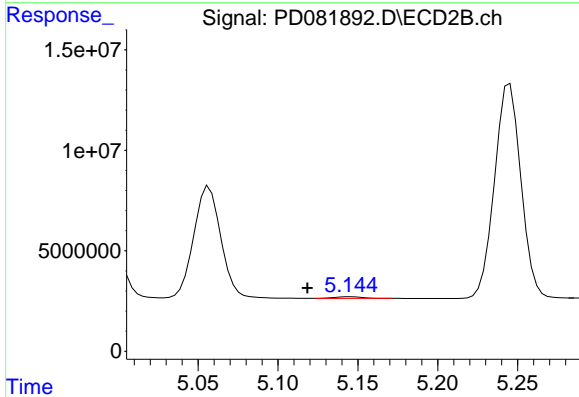
R.T.: 4.743 min
 Delta R.T.: -0.005 min
 Response: 67388361
 Conc: 21.00 ng/ml



#9 Endosulfan I

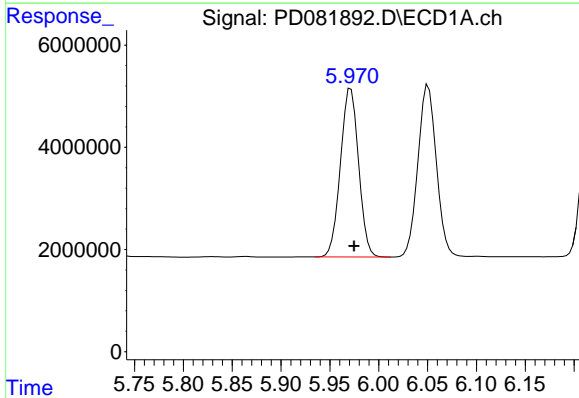
R.T.: 6.051 min
 Delta R.T.: -0.056 min
 Response: 44359474
 Conc: 21.07 ng/ml

Instrument : ECD_D
 ClientSampleId : INDB3153



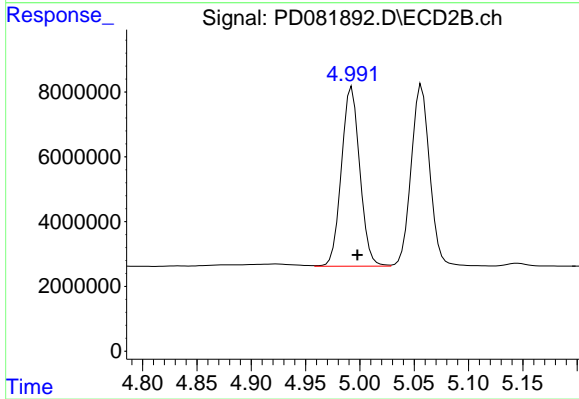
#9 Endosulfan I

R.T.: 5.145 min
 Delta R.T.: 0.027 min
 Response: 1002495
 Conc: 0.33 ng/ml



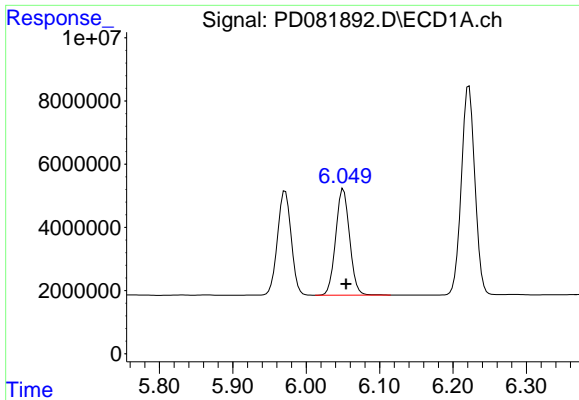
#10 trans-Chlordane

R.T.: 5.971 min
 Delta R.T.: -0.003 min
 Response: 42684839
 Conc: 19.50 ng/ml



#10 trans-Chlordane

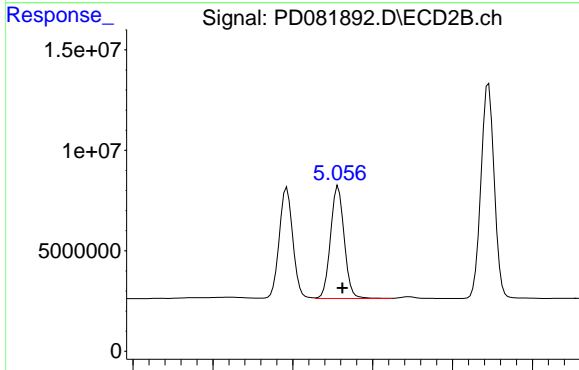
R.T.: 4.993 min
 Delta R.T.: -0.005 min
 Response: 65207416
 Conc: 20.90 ng/ml



#11 cis-Chlordane

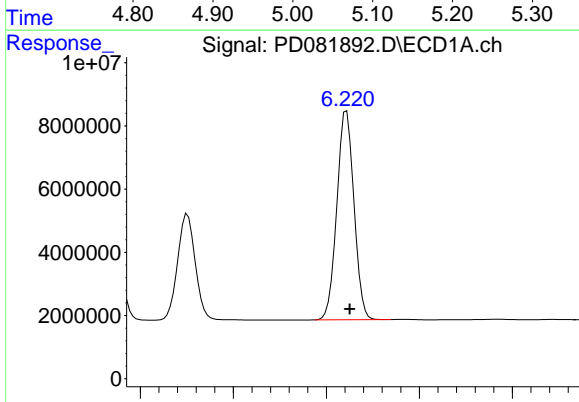
R.T.: 6.051 min
 Delta R.T.: -0.003 min
 Response: 44359474
 Conc: 19.70 ng/ml

Instrument :
 ECD_D
 ClientSampleId :
 INDB3153



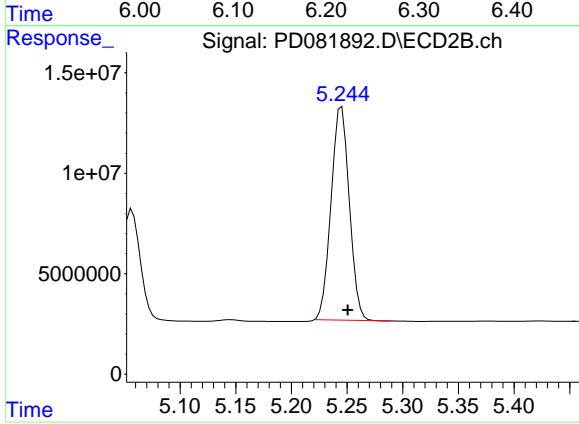
#11 cis-Chlordane

R.T.: 5.057 min
 Delta R.T.: -0.005 min
 Response: 66548051
 Conc: 20.77 ng/ml



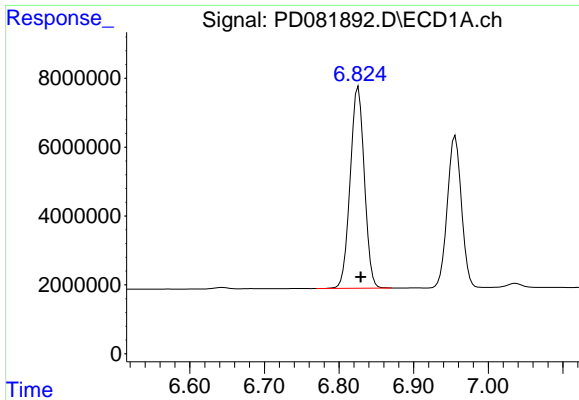
#12 4,4'-DDE

R.T.: 6.222 min
 Delta R.T.: -0.003 min
 Response: 84644902
 Conc: 39.43 ng/ml



#12 4,4'-DDE

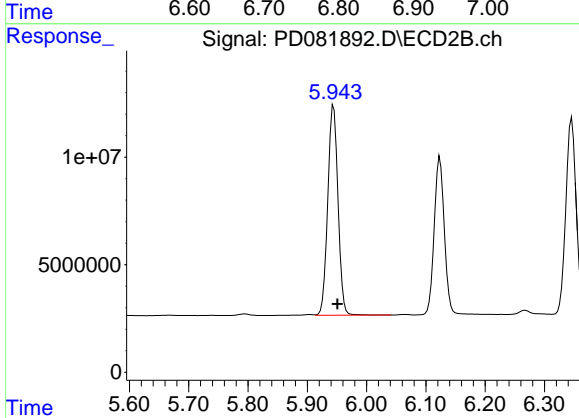
R.T.: 5.245 min
 Delta R.T.: -0.005 min
 Response: 121066390
 Conc: 40.94 ng/ml



#15 Endosulfan II

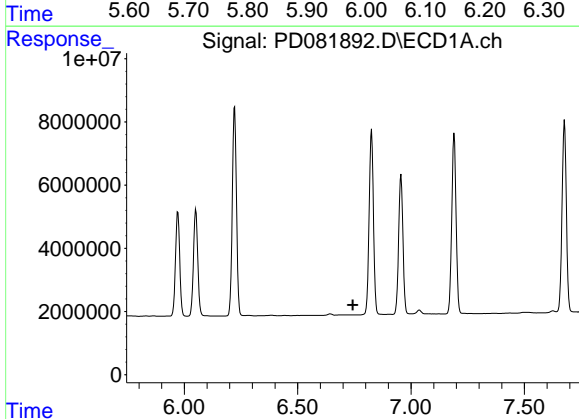
R.T.: 6.826 min
 Delta R.T.: -0.003 min
 Response: 77033208
 Conc: 39.90 ng/ml

Instrument :
 ECD_D
 ClientSampleId :
 INDB3153



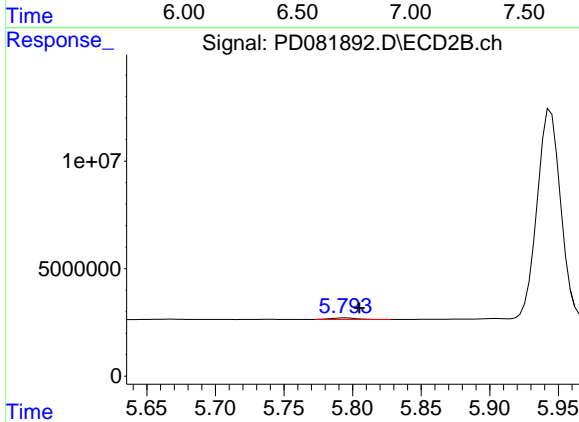
#15 Endosulfan II

R.T.: 5.944 min
 Delta R.T.: -0.006 min
 Response: 116895479
 Conc: 41.41 ng/ml



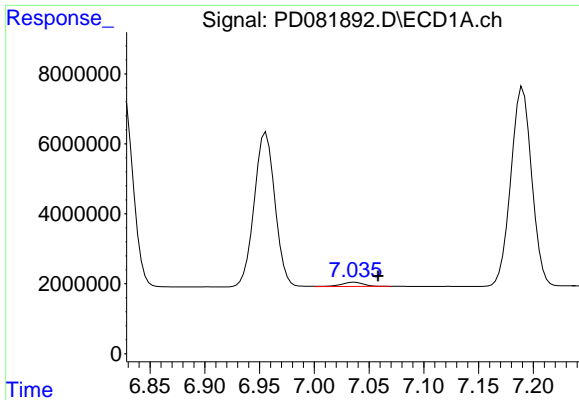
#16 4,4'-DDD

R.T.: 0.000 min
 Exp R.T. : 6.744 min
 Response: 0
 Conc: N.D.



#16 4,4'-DDD

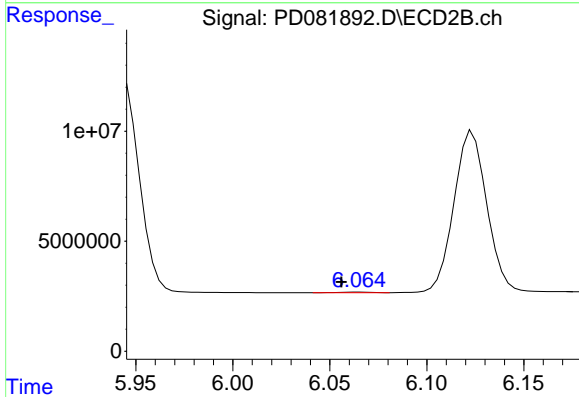
R.T.: 5.794 min
 Delta R.T.: -0.011 min
 Response: 868505
 Conc: 0.34 ng/ml



#17 4,4'-DDT

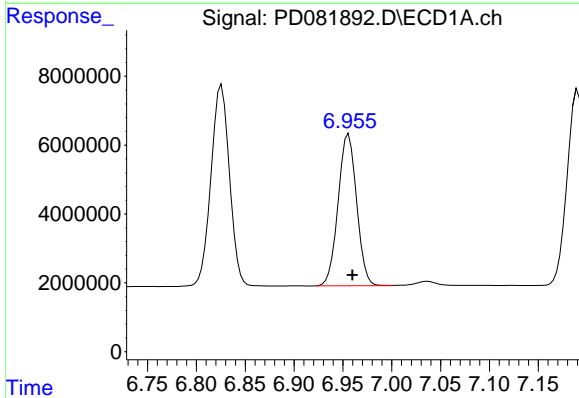
R.T.: 7.037 min
 Delta R.T.: -0.022 min
 Response: 1767771
 Conc: 1.02 ng/ml

Instrument :
 ECD_D
 ClientSampleId :
 INDB3153



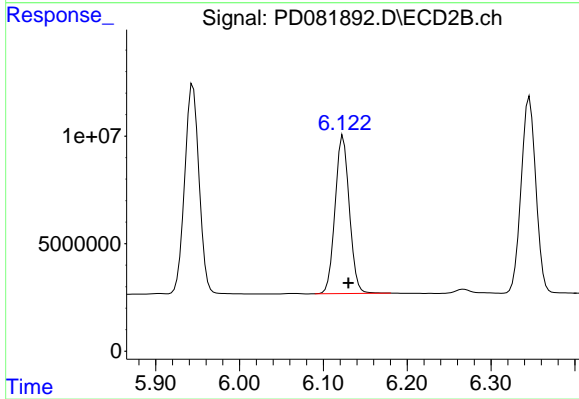
#17 4,4'-DDT

R.T.: 6.065 min
 Delta R.T.: 0.009 min
 Response: 287716
 Conc: 0.11 ng/ml



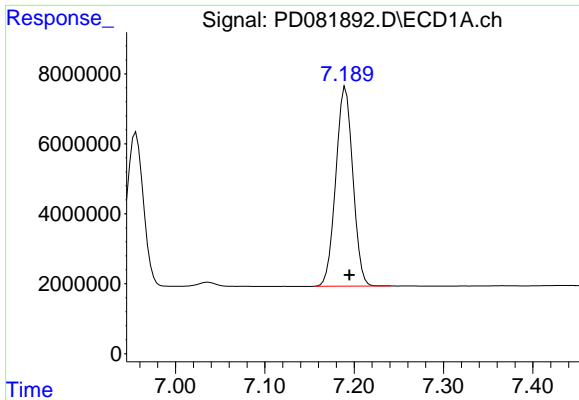
#18 Endrin aldehyde

R.T.: 6.956 min
 Delta R.T.: -0.004 min
 Response: 58158464
 Conc: 38.93 ng/ml



#18 Endrin aldehyde

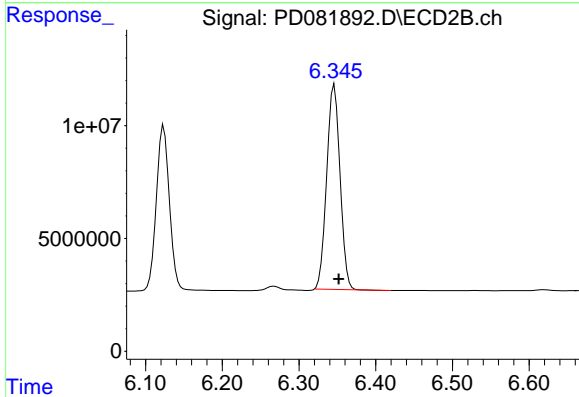
R.T.: 6.124 min
 Delta R.T.: -0.006 min
 Response: 86698449
 Conc: 40.01 ng/ml



#19 Endosulfan Sulfate

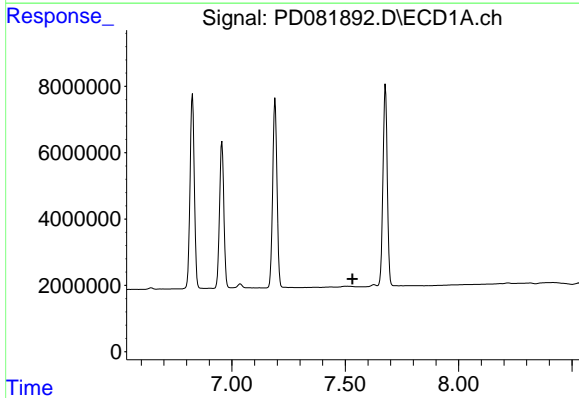
R.T.: 7.190 min
 Delta R.T.: -0.004 min
 Response: 75504371
 Conc: 41.24 ng/ml

Instrument :
 ECD_D
 ClientSampleId :
 INDB3153



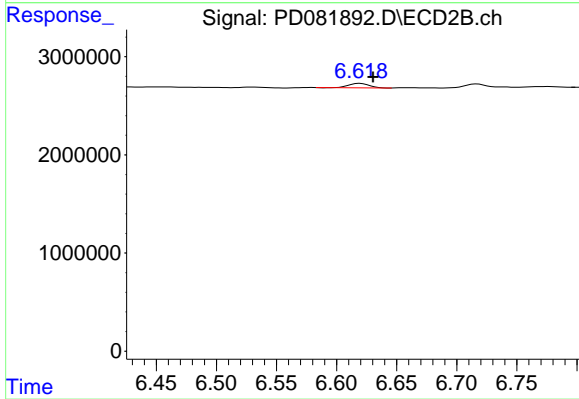
#19 Endosulfan Sulfate

R.T.: 6.346 min
 Delta R.T.: -0.006 min
 Response: 109430555
 Conc: 40.79 ng/ml



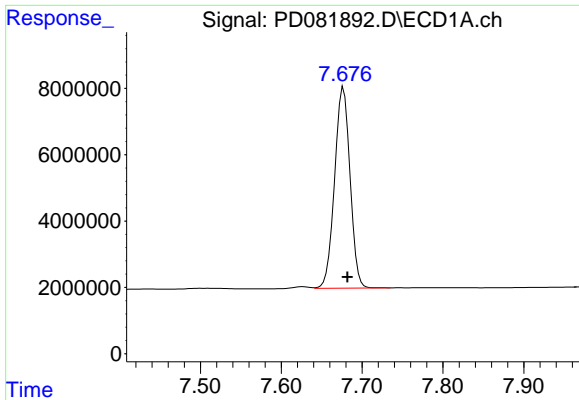
#20 Methoxychlor

R.T.: 0.000 min
 Exp R.T. : 7.532 min
 Response: 0
 Conc: N.D.



#20 Methoxychlor

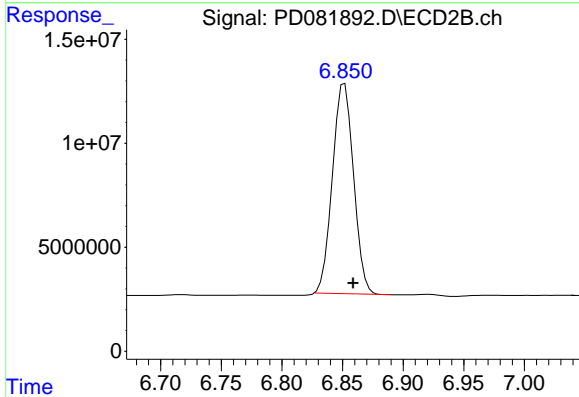
R.T.: 6.619 min
 Delta R.T.: -0.011 min
 Response: 522636
 Conc: 0.39 ng/ml



#21 Endrin ketone

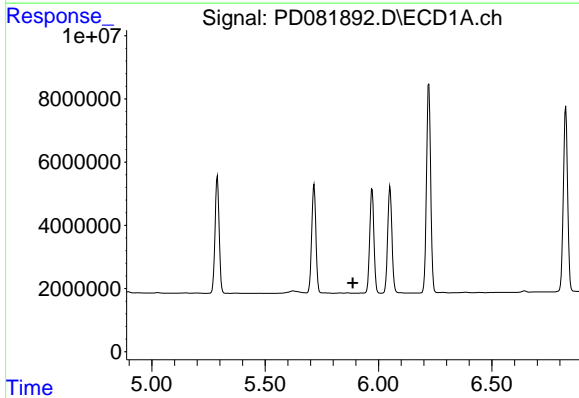
R.T.: 7.677 min
 Delta R.T.: -0.005 min
 Response: 80440796
 Conc: 41.60 ng/ml

Instrument : ECD_D
 ClientSampleId : INDB3153



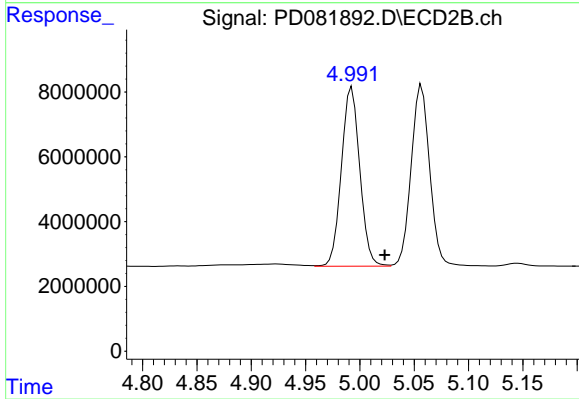
#21 Endrin ketone

R.T.: 6.852 min
 Delta R.T.: -0.007 min
 Response: 122374544
 Conc: 40.81 ng/ml



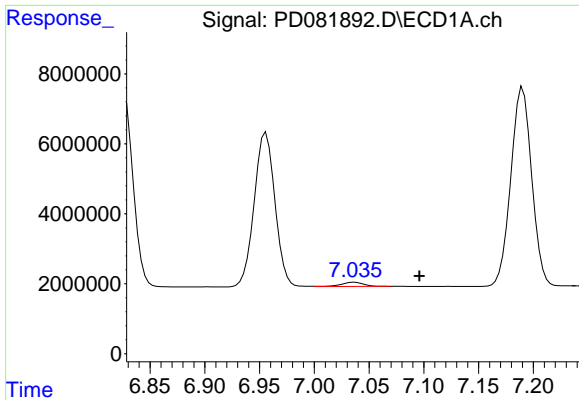
#22 Toxaphene-1

R.T.: 0.000 min
 Exp R.T. : 5.886 min
 Response: 0
 Conc: N.D.



#22 Toxaphene-1

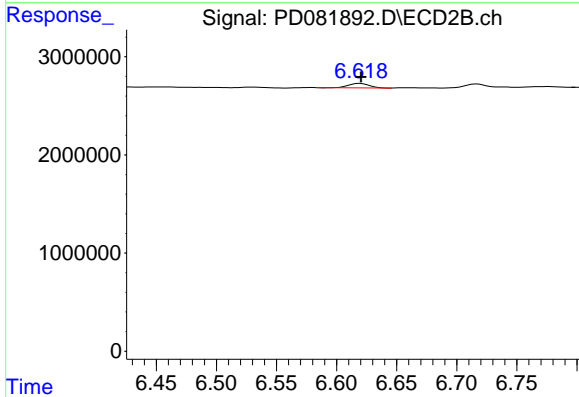
R.T.: 4.993 min
 Delta R.T.: -0.030 min
 Response: 65207416
 Conc: 3982.82 ng/ml



#24 Toxaphene-3

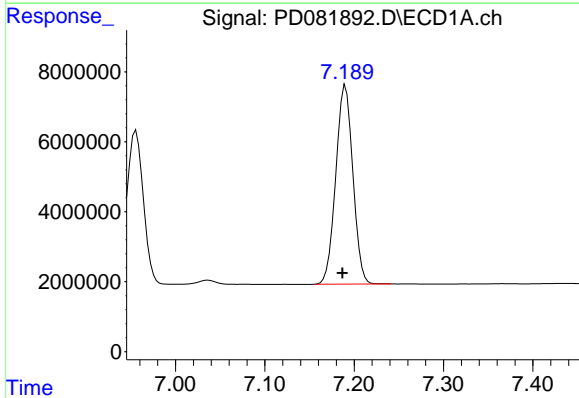
R.T.: 7.037 min
 Delta R.T.: -0.059 min
 Response: 1767771
 Conc: 33.43 ng/ml

Instrument :
 ECD_D
 ClientSampleId :
 INDB3153



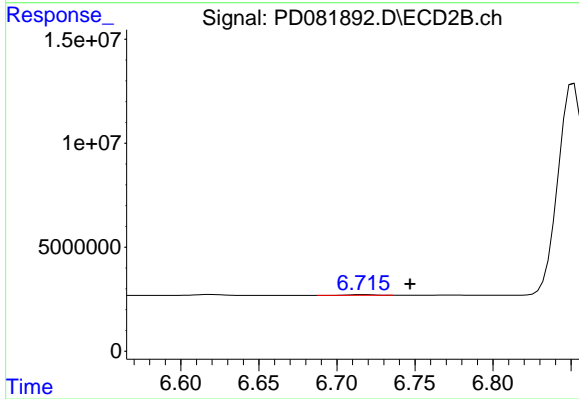
#24 Toxaphene-3

R.T.: 6.619 min
 Delta R.T.: 0.000 min
 Response: 522636
 Conc: 8.93 ng/ml



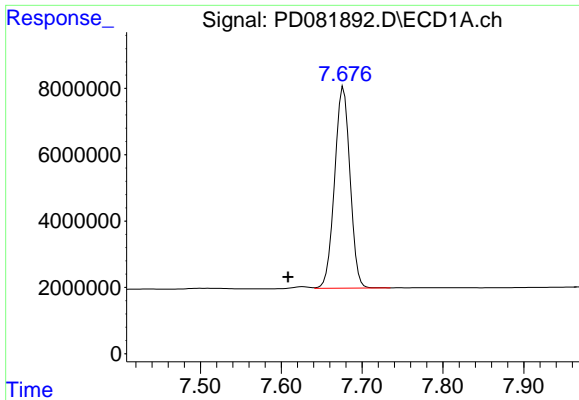
#25 Toxaphene-4

R.T.: 7.190 min
 Delta R.T.: 0.003 min
 Response: 75504371
 Conc: 1908.72 ng/ml



#25 Toxaphene-4

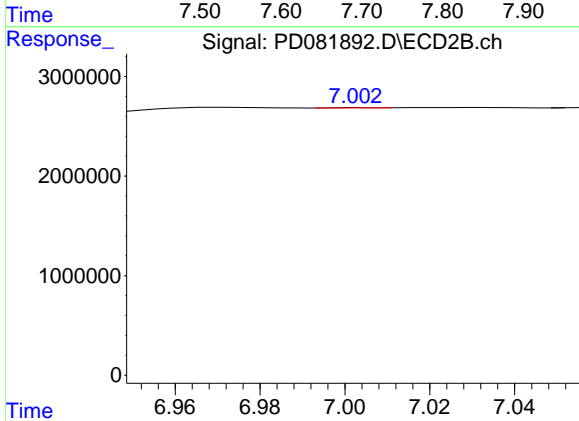
R.T.: 6.717 min
 Delta R.T.: -0.030 min
 Response: 392410
 Conc: 4.93 ng/ml



#26 Toxaphene-5

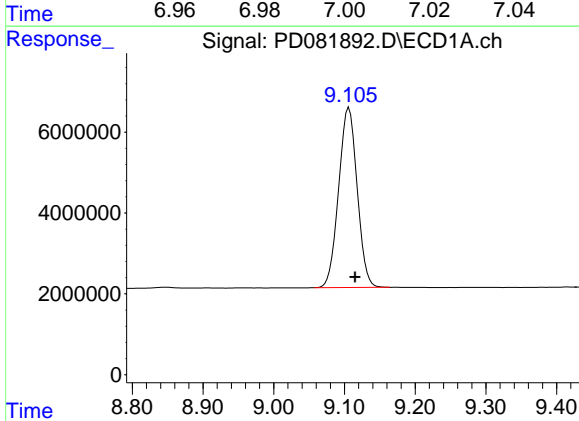
R.T.: 7.677 min
 Delta R.T.: 0.068 min
 Response: 80440796
 Conc: 2712.26 ng/ml

Instrument :
 ECD_D
 ClientSampleId :
 INDB3153



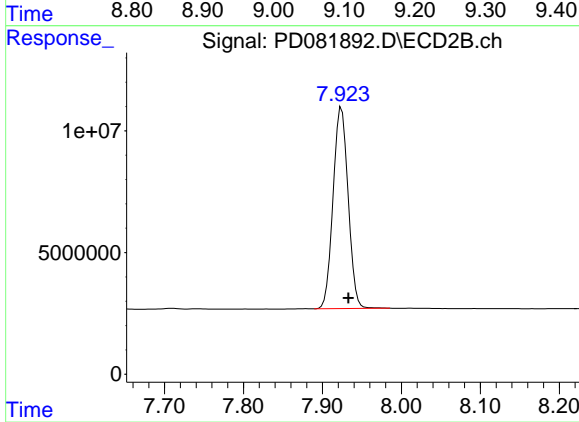
#26 Toxaphene-5

R.T.: 7.003 min
 Delta R.T.: -0.057 min
 Response: 16033
 Conc: 0.49 ng/ml



#27 Decachlorobiphenyl

R.T.: 9.106 min
 Delta R.T.: -0.008 min
 Response: 80938719
 Conc: 41.95 ng/ml



#27 Decachlorobiphenyl

R.T.: 7.924 min
 Delta R.T.: -0.009 min
 Response: 109683769
 Conc: 44.21 ng/ml