

Data Path : Z:\pestpcbsrv\HPCHEM1\ECD_D\Data\PD030124\
 Data File : PD081848.D
 Signal(s) : Signal #1: ECD1A.ch Signal #2: ECD2B.ch
 Acq On : 01 Mar 2024 10:41
 Operator : AR\AJ
 Sample : P1647-01
 Misc :
 ALS Vial : 7 Sample Multiplier: 1

Instrument :
 ECD_D
 ClientSampleId :
 BGSJ9

Manual Integrations
 APPROVED

Reviewed By :Abdul Mirza 03/04/2024
 Supervised By :Ankita Jodhani 03/04/2024

Integration File signal 1: autoint1.e
 Integration File signal 2: autoint2.e
 Quant Time: Mar 01 19:42:25 2024
 Quant Method : Z:\pestpcbsrv\HPCHEM1\ECD_D\Method\PD021224CLP.M
 Quant Title : GC Extractables
 QLast Update : Mon Feb 12 17:06:05 2024
 Response via : Initial Calibration
 Integrator: ChemStation

Volume Inj. : 1 µl
 Signal #1 Phase : ZB-MR1 Signal #2 Phase: ZB-MR2
 Signal #1 Info : 30M x 0.32mm x0.5 Signal #2 Info : 30M x 0.32mm x 0.25µm

Compound	RT#1	RT#2	Resp#1	Resp#2	ng/ml	ng/ml

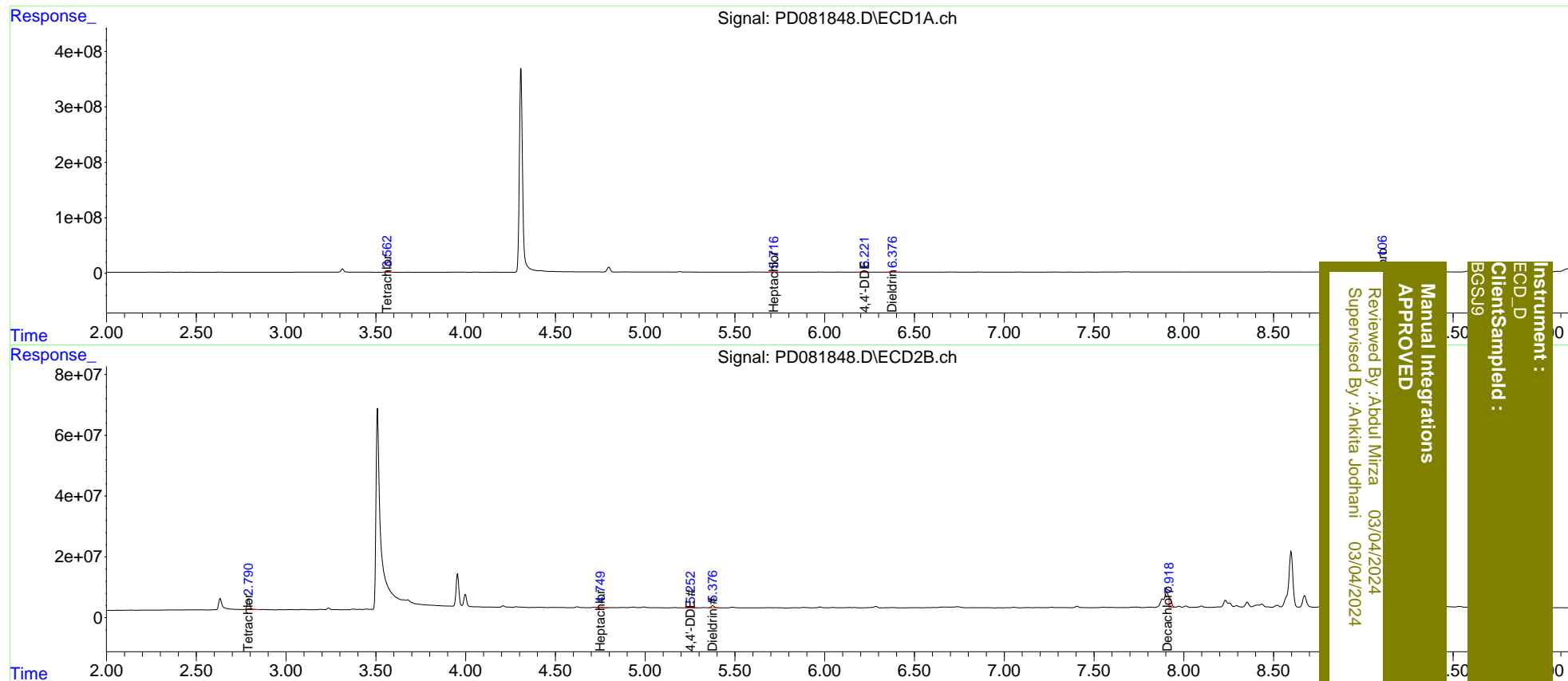
System Monitoring Compounds						
1) SA Tetrachlo...	3.563	2.791	19348133	34585477	14.152	14.108
27) SA Decachlor...	9.106	7.918	23718531	27388208	12.293m	11.041m
Target Compounds						
8) B Heptachlo...	5.717	4.749	2173575	3082838	0.960	0.961m
12) B 4,4'-DDE	6.222	5.253	2132262	3413821	0.993	1.154
13) MA Dieldrin	6.378	5.377	4644518	8185954	2.092	2.492

(f)=RT Delta > 1/2 Window (#)=Amounts differ by > 25% (m)=manual int.

Data Path : Z:\pestpcbsrv\HPCHEM1\ECD_D\Data\PD030124\
 Data File : PD081848.D
 Signal(s) : Signal #1: ECD1A.ch Signal #2: ECD2B.ch
 Acq On : 01 Mar 2024 10:41
 Operator : AR\AJ
 Sample : P1647-01
 Misc :
 ALS Vial : 7 Sample Multiplier: 1

Integration File signal 1: autoint1.e
 Integration File signal 2: autoint2.e
 Quant Time: Mar 01 19:42:25 2024
 Quant Method : Z:\pestpcbsrv\HPCHEM1\ECD_D\Method\PD021224CLP.M
 Quant Title : GC Extractables
 QLast Update : Mon Feb 12 17:06:05 2024
 Response via : Initial Calibration
 Integrator: ChemStation

Volume Inj. : 1 µl
 Signal #1 Phase : ZB-MR1 Signal #2 Phase: ZB-MR2
 Signal #1 Info : 30M x 0.32mm x0.5 Signal #2 Info : 30M x 0.32mm x 0.25µm



Instrument : ECD_D
 Client Sampled : BGSJ9
 Manual Integrations APPROVED
 Reviewed By :Abdul Mirza 03/04/2024
 Supervised By :Ankita Jodhani 03/04/2024