

Data Path : Z:\pestpcbsrv\HPCHEM1\ECD\_D\Data\PD030219\  
 Data File : PD051494.D  
 Signal(s) : Signal #1: ECD1A.CH Signal #2: ECD2B.CH  
 Acq On : 01 Mar 2019 20:22  
 Operator : AJ\SJ  
 Sample : PTOXICC500  
 Misc :  
 ALS Vial : 17 Sample Multiplier: 1

Instrument :  
 ECD\_D  
 ClientSampleId :  
 PTOXICC500

Integration File signal 1: autoint1.e  
 Integration File signal 2: autoint2.e  
 Quant Time: Mar 01 23:54:24 2019  
 Quant Method : Z:\pestpcbsrv\HPCHEM1\ECD\_D\Method\DTX030219.M  
 Quant Title : GC Extractables  
 QLast Update : Fri Mar 01 23:53:35 2019  
 Response via : Initial Calibration  
 Integrator: ChemStation 6890 Scale Mode: Large solvent peaks clipped

Volume Inj. : 1 µl  
 Signal #1 Phase : ZB-MR2 Signal #2 Phase: ZB-MR1  
 Signal #1 Info : 30M x 0.32mm x0.2 Signal #2 Info : 30M x 0.32mm x 0.50µm

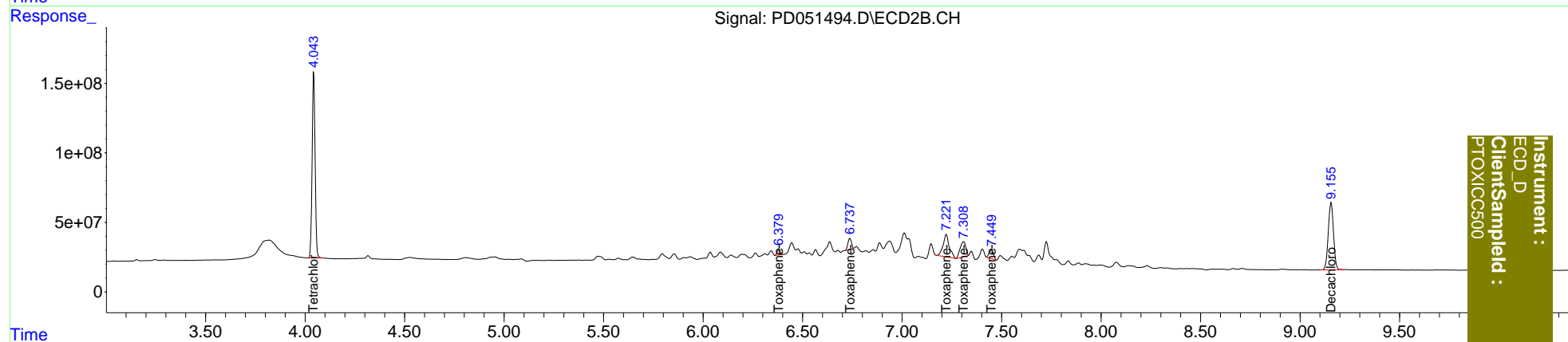
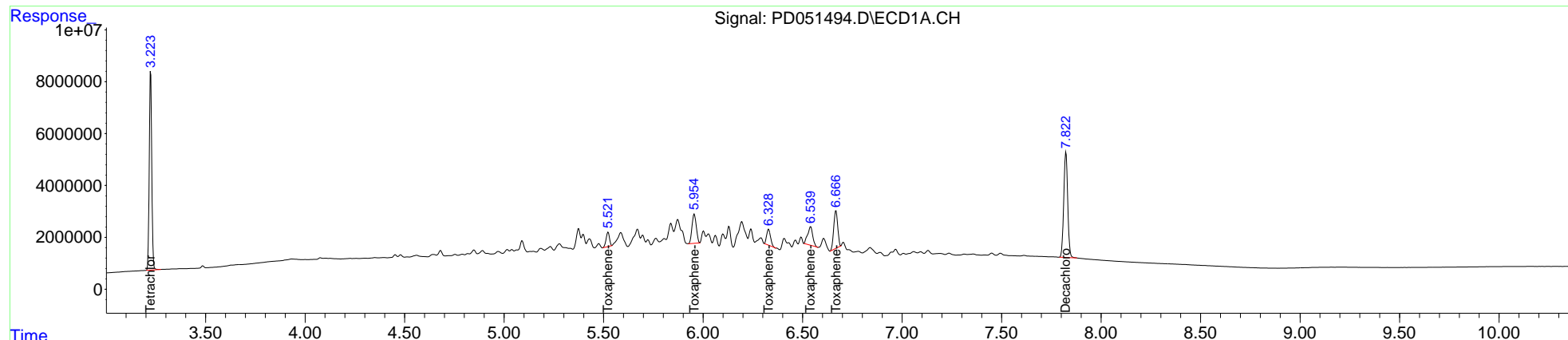
Compound	RT#1	RT#2	Resp#1	Resp#2	ng/ml	ng/ml
-----						
System Monitoring Compounds						
1) SA Tetrachlo...	3.224	4.044	68326904	1404.7E6	50.000	50.000
7) SA Decachlor...	7.824	9.156	56198500	885.5E6	50.000	50.000
Target Compounds						
2) Toxaphene-1	5.523	6.381	6486408	43783809	500.000	500.000
3) Toxaphene-2	5.956	6.738	16688851	96430813	500.000	500.000
4) Toxaphene-3	6.330	7.223	8345396	350.4E6	500.000	500.000
5) Toxaphene-4	6.541	7.310	12702282	212.2E6	500.000	500.000
6) Toxaphene-5	6.668	7.450	20163028	91129566	500.000	500.000
-----						

(f)=RT Delta > 1/2 Window (#)=Amounts differ by > 25% (m)=manual int.

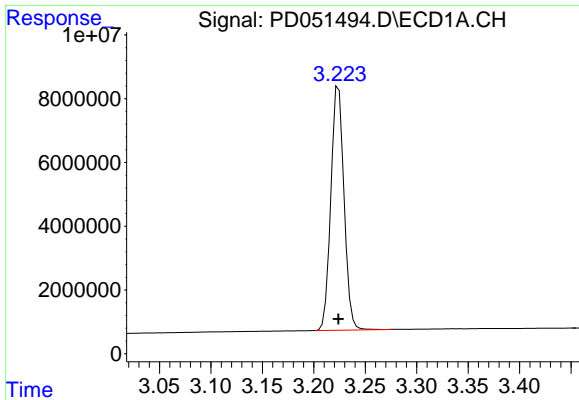
Data Path : Z:\pestpcbsrv\HPCHEM1\ECD\_D\Data\PD030219\  
 Data File : PD051494.D  
 Signal(s) : Signal #1: ECD1A.CH Signal #2: ECD2B.CH  
 Acq On : 01 Mar 2019 20:22  
 Operator : AJ\SJ  
 Sample : PTOXICC500  
 Misc :  
 ALS Vial : 17 Sample Multiplier: 1

Integration File signal 1: autoint1.e  
 Integration File signal 2: autoint2.e  
 Quant Time: Mar 01 23:54:24 2019  
 Quant Method : Z:\pestpcbsrv\HPCHEM1\ECD\_D\Method\DTX030219.M  
 Quant Title : GC Extractables  
 QLast Update : Fri Mar 01 23:53:35 2019  
 Response via : Initial Calibration  
 Integrator: ChemStation 6890 Scale Mode: Large solvent peaks clipped

Volume Inj. : 1 µl  
 Signal #1 Phase : ZB-MR2 Signal #2 Phase: ZB-MR1  
 Signal #1 Info : 30M x 0.32mm x0.2 Signal #2 Info : 30M x 0.32mm x 0.50µm

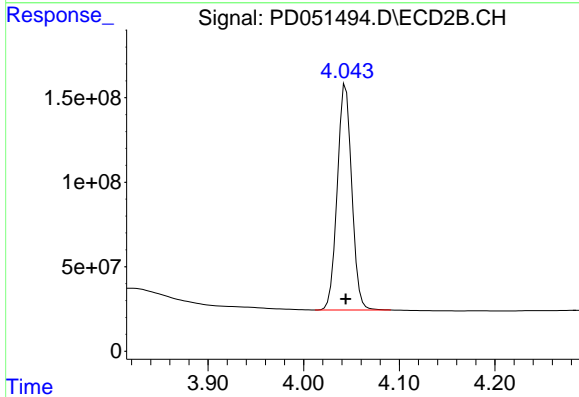


Instrument :  
 ECD\_D  
 ClientSampleId :  
 PTOXICC500

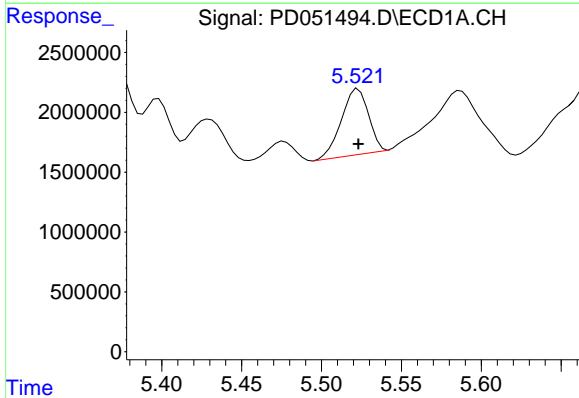


#1 Tetrachloro-m-xylene  
 R.T.: 3.224 min  
 Delta R.T.: 0.000 min  
 Response: 68326904  
 Conc: 50.00 ng/ml

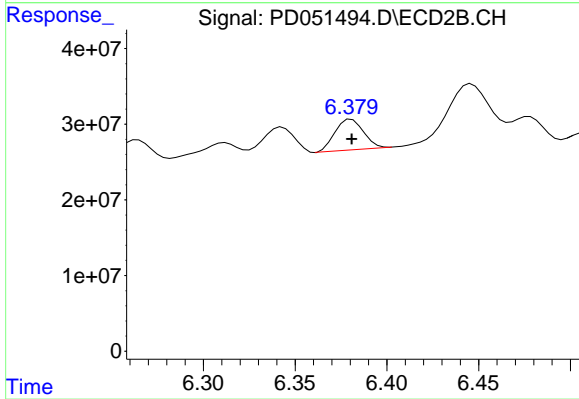
Instrument :  
 ECD\_D  
 ClientSampleId :  
 PTOXICC500



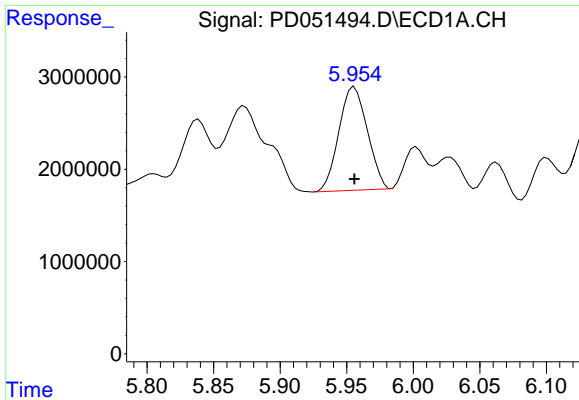
#1 Tetrachloro-m-xylene  
 R.T.: 4.044 min  
 Delta R.T.: 0.000 min  
 Response: 1404701183  
 Conc: 50.00 ng/ml



#2 Toxaphene-1  
 R.T.: 5.523 min  
 Delta R.T.: 0.000 min  
 Response: 6486408  
 Conc: 500.00 ng/ml



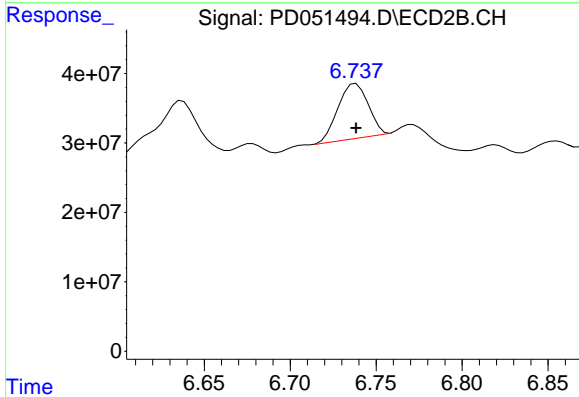
#2 Toxaphene-1  
 R.T.: 6.381 min  
 Delta R.T.: 0.000 min  
 Response: 43783809  
 Conc: 500.00 ng/ml



#3 Toxaphene-2

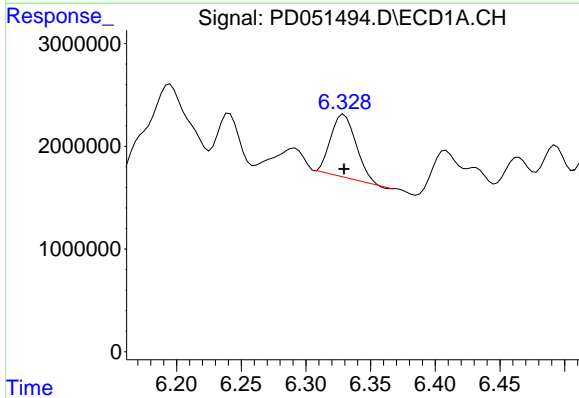
R.T.: 5.956 min  
 Delta R.T.: 0.000 min  
 Response: 16688851  
 Conc: 500.00 ng/ml

Instrument :  
 ECD\_D  
 ClientSampleId :  
 PTOXICC500



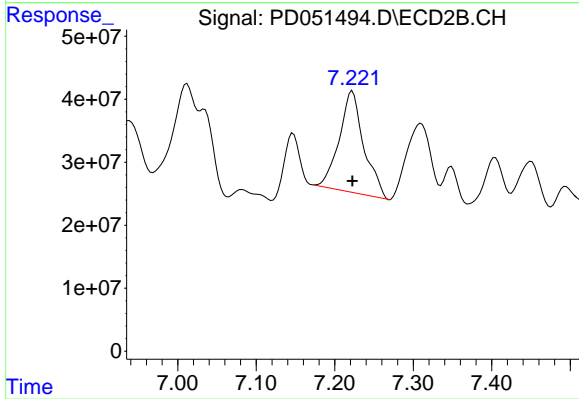
#3 Toxaphene-2

R.T.: 6.738 min  
 Delta R.T.: 0.000 min  
 Response: 96430813  
 Conc: 500.00 ng/ml



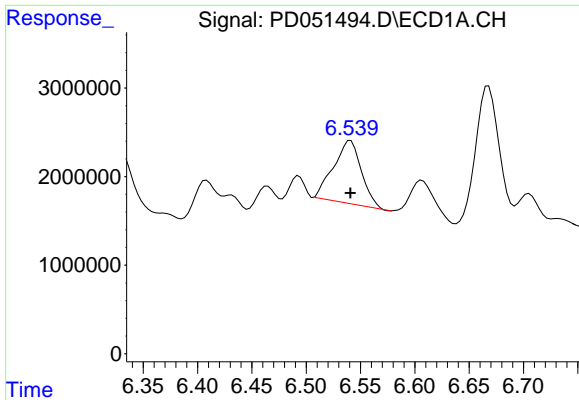
#4 Toxaphene-3

R.T.: 6.330 min  
 Delta R.T.: 0.000 min  
 Response: 8345396  
 Conc: 500.00 ng/ml



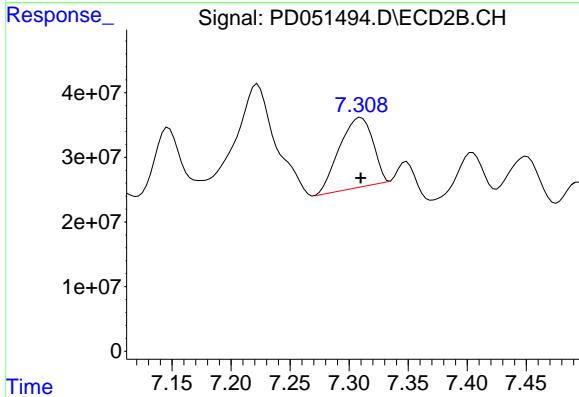
#4 Toxaphene-3

R.T.: 7.223 min  
 Delta R.T.: 0.000 min  
 Response: 350395261  
 Conc: 500.00 ng/ml

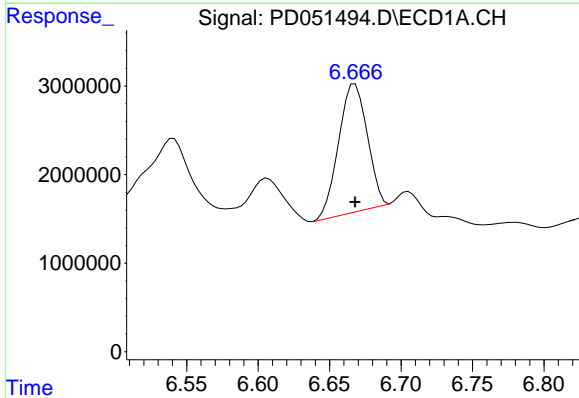


#5 Toxaphene-4  
 R.T.: 6.541 min  
 Delta R.T.: 0.000 min  
 Response: 12702282  
 Conc: 500.00 ng/ml

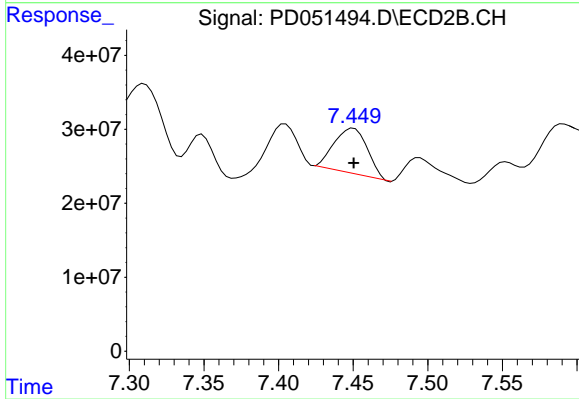
Instrument :  
 ECD\_D  
 ClientSampleId :  
 PTOXICC500



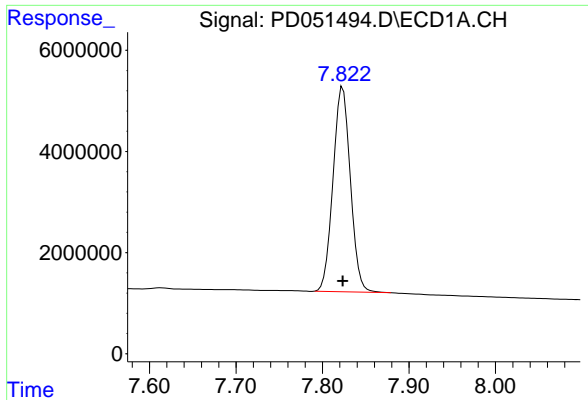
#5 Toxaphene-4  
 R.T.: 7.310 min  
 Delta R.T.: 0.000 min  
 Response: 212197216  
 Conc: 500.00 ng/ml



#6 Toxaphene-5  
 R.T.: 6.668 min  
 Delta R.T.: 0.000 min  
 Response: 20163028  
 Conc: 500.00 ng/ml



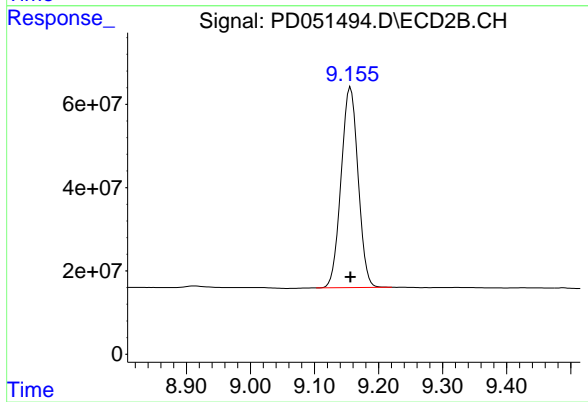
#6 Toxaphene-5  
 R.T.: 7.450 min  
 Delta R.T.: 0.000 min  
 Response: 91129566  
 Conc: 500.00 ng/ml



#7 Decachlorobiphenyl

R.T.: 7.824 min  
Delta R.T.: 0.000 min  
Response: 56198500  
Conc: 50.00 ng/ml

Instrument :  
ECD\_D  
ClientSampleId :  
PTOXICC500



#7 Decachlorobiphenyl

R.T.: 9.156 min  
Delta R.T.: 0.000 min  
Response: 885465641  
Conc: 50.00 ng/ml