

Data Path : Z:\pestpcbsrv\HPCHEM1\ECD_D\Data\PD030221\
 Data File : PD061415.D
 Signal(s) : Signal #1: ECD1A.ch Signal #2: ECD2B.ch
 Acq On : 02 Mar 2021 13:53
 Operator : DD\AJ
 Sample : INDA317
 Misc :
 ALS Vial : 8 Sample Multiplier: 1

Instrument :
 ECD_D
 ClientSampleId :
 INDA317

Integration File signal 1: autoint1.e
 Integration File signal 2: autoint2.e
 Quant Time: Mar 03 04:28:00 2021
 Quant Method : Z:\pestpcbsrv\HPCHEM1\ECD_D\Method\PD022121CLP.M
 Quant Title : GC Extractables
 QLast Update : Mon Feb 22 04:35:05 2021
 Response via : Initial Calibration
 Integrator: ChemStation

Volume Inj. : 1 µl
 Signal #1 Phase : ZB-MR2 Signal #2 Phase: ZB-MR1
 Signal #1 Info : 30M x 0.32mm x0.2 Signal #2 Info : 30M x 0.32mm x 0.50µm

Compound	RT#1	RT#2	Resp#1	Resp#2	ng/ml	ng/ml

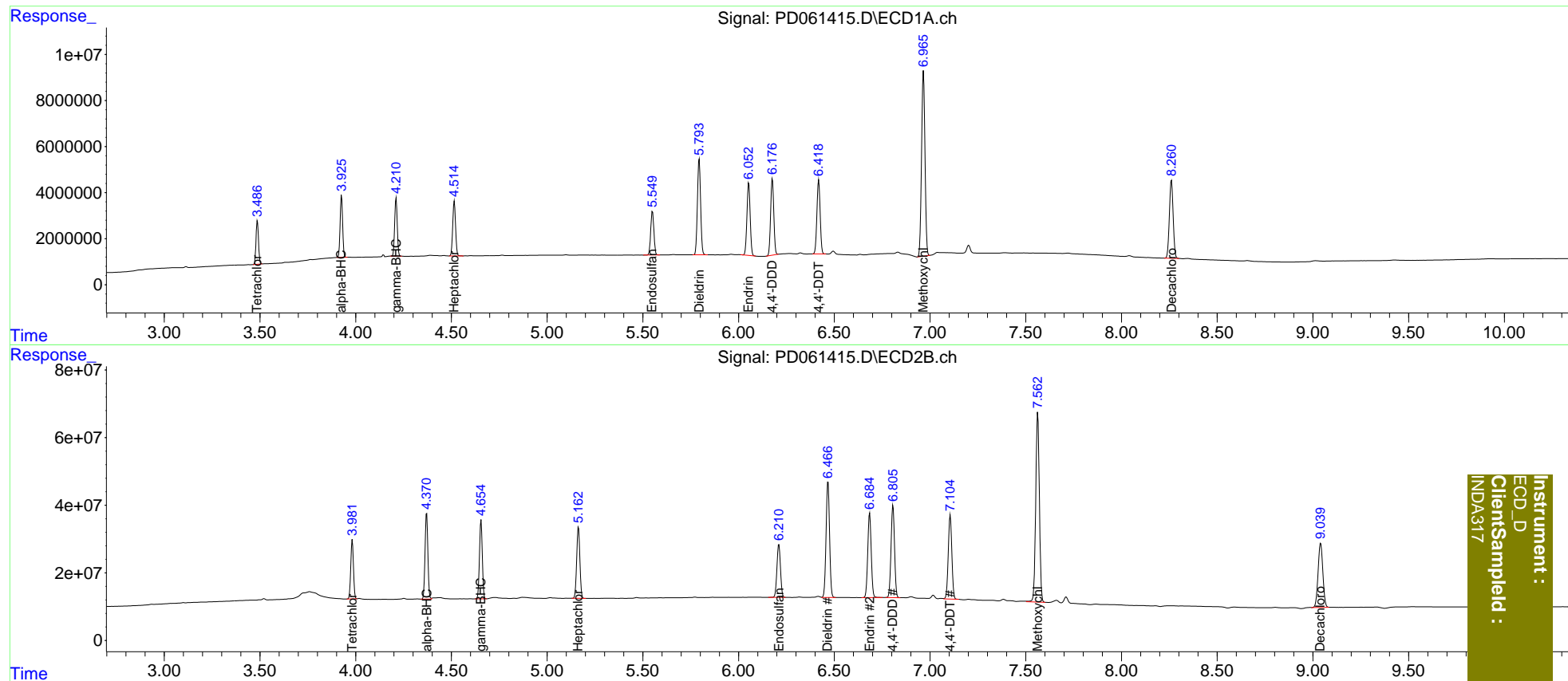
System Monitoring Compounds						
1) SA Tetrachlo...	3.487	3.983	17141757	169.7E6	18.615	20.295
27) SA Decachlor...	8.261	9.041	46333979	327.8E6	37.660	45.606
Target Compounds						
2) A alpha-BHC	3.927	4.371	24490549	260.1E6	18.520	20.256
3) MA gamma-BHC...	4.212	4.655	23760116	239.9E6	18.469	20.536
4) MA Heptachlor	4.516	5.164	24552537	244.2E6	18.603	20.668
9) A Endosulfan I	5.551	6.211	21903539	201.5E6	18.570	21.816
13) MA Dieldrin	5.795	6.468	48185521	433.8E6	37.725	44.135
14) MA Endrin	6.054	6.685	36861754	316.0E6	34.729	40.932
16) A 4,4'-DDD	6.177	6.807	37951176	345.6E6	37.382	45.106
17) MA 4,4'-DDT	6.419	7.106	37846715	322.1E6	37.618	43.205
20) A Methoxychlor	6.966	7.563	99927959	743.5E6	179.272	212.775

(f)=RT Delta > 1/2 Window (#)=Amounts differ by > 25% (m)=manual int.

Data Path : Z:\pestpcbsrv\HPCHEM1\ECD_D\Data\PD030221\
 Data File : PD061415.D
 Signal(s) : Signal #1: ECD1A.ch Signal #2: ECD2B.ch
 Acq On : 02 Mar 2021 13:53
 Operator : DD\AJ
 Sample : INDA317
 Misc :
 ALS Vial : 8 Sample Multiplier: 1

Integration File signal 1: autoint1.e
 Integration File signal 2: autoint2.e
 Quant Time: Mar 03 04:28:00 2021
 Quant Method : Z:\pestpcbsrv\HPCHEM1\ECD_D\Method\PD022121CLP.M
 Quant Title : GC Extractables
 QLast Update : Mon Feb 22 04:35:05 2021
 Response via : Initial Calibration
 Integrator: ChemStation

Volume Inj. : 1 µl
 Signal #1 Phase : ZB-MR2 Signal #2 Phase: ZB-MR1
 Signal #1 Info : 30M x 0.32mm x0.2 Signal #2 Info : 30M x 0.32mm x 0.50µm



Instrument :
 ECD_D
 ClientSampleId :
 INDA317