

Quantitation Report (Qedit)

Data Path : Z:\pestpcbsrv\HPCHEM1\ECD_D\Data\PD030222\
 Data File : PD068275.D
 Signal(s) : Signal #1: ECD1A.ch Signal #2: ECD2B.ch
 Acq On : 01 Mar 2022 14:53
 Operator : AR\AJ
 Sample : N1676-12
 Misc :
 ALS Vial : 6 Sample Multiplier: 1

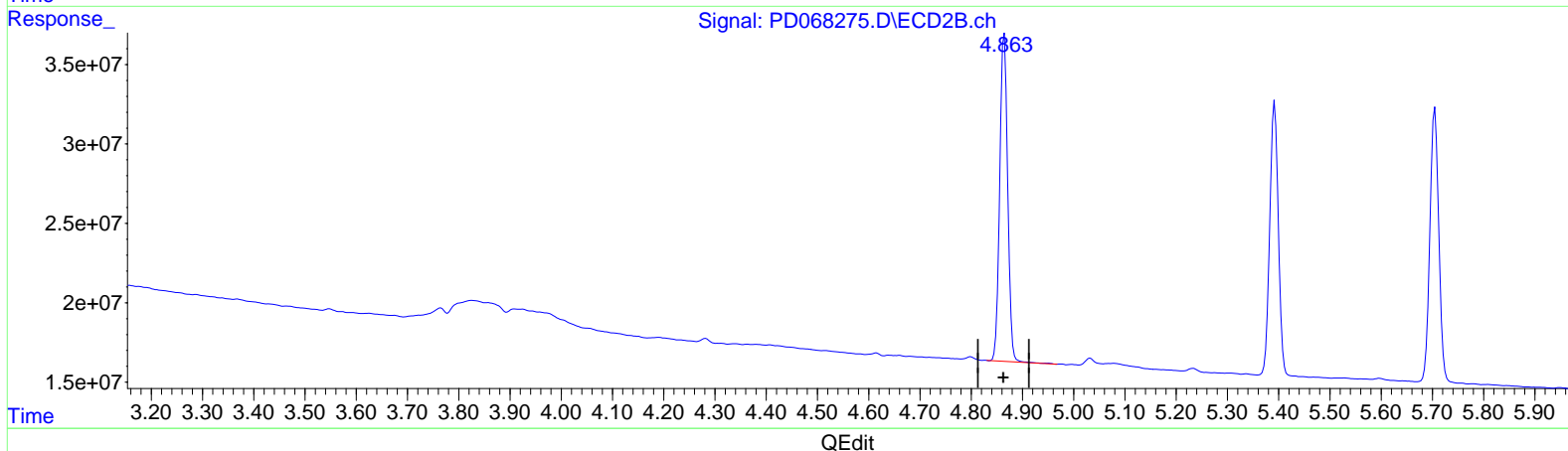
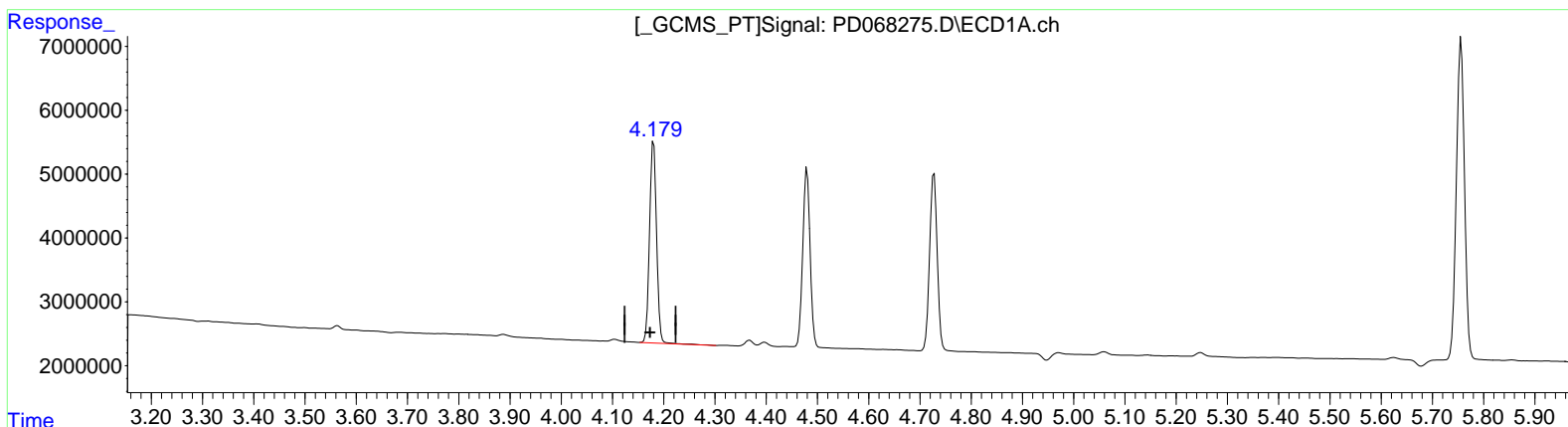
Instrument :
 ECD_D
 ClientSampleId :
 PEST-GPC2-BLANK-SPIKE

Manual Integrations APPROVED

Reviewed By : Abdul Mirza 03/02/2022
 Supervised By : Ankita Jodhani 03/02/2022

Integration File signal 1: autoint1.e
 Integration File signal 2: autoint2.e
 Quant Time: Mar 02 05:01:16 2022
 Quant Method : Z:\pestpcbsrv\HPCHEM1\ECD_D\Method\PD022822CLP.M
 Quant Title : GC Extractables
 QLast Update : Mon Feb 28 15:58:45 2022
 Response via : Initial Calibration
 Integrator: ChemStation

Volume Inj. : 1 µl
 Signal #1 Phase : ZB-MR2 Signal #2 Phase: ZB-MR1
 Signal #1 Info : 30M x 0.32mm x 0.2 Signal #2 Info : 30M x 0.32mm x 0.50µm



(3) gamma-BHC (Lindane) (MA)

4.180min 21.369 ng/ml

response 30045839

(3) gamma-BHC (Lindane) #2 (MA)

4.865min 19.135 ng/ml

response 222330502

Data Path : Z:\pestpcbsrv\HPCHEM1\ECD_D\Data\PD030222\
 Data File : PD068275.D
 Signal(s) : Signal #1: ECD1A.ch Signal #2: ECD2B.ch
 Acq On : 01 Mar 2022 14:53
 Operator : AR\AJ
 Sample : N1676-12
 Misc :
 ALS Vial : 6 Sample Multiplier: 1

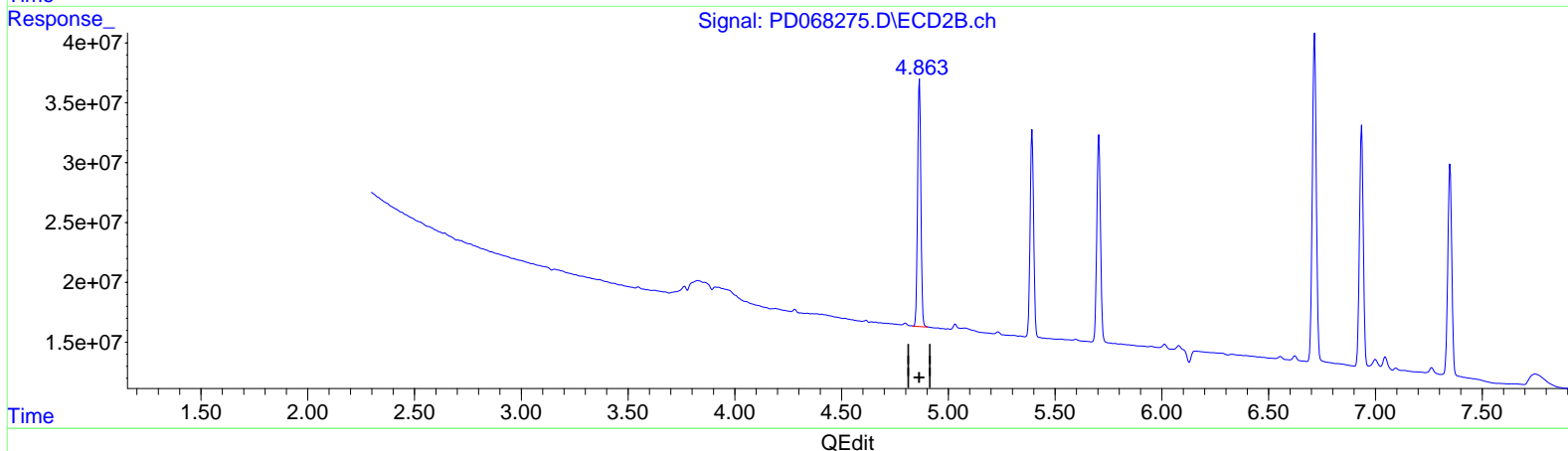
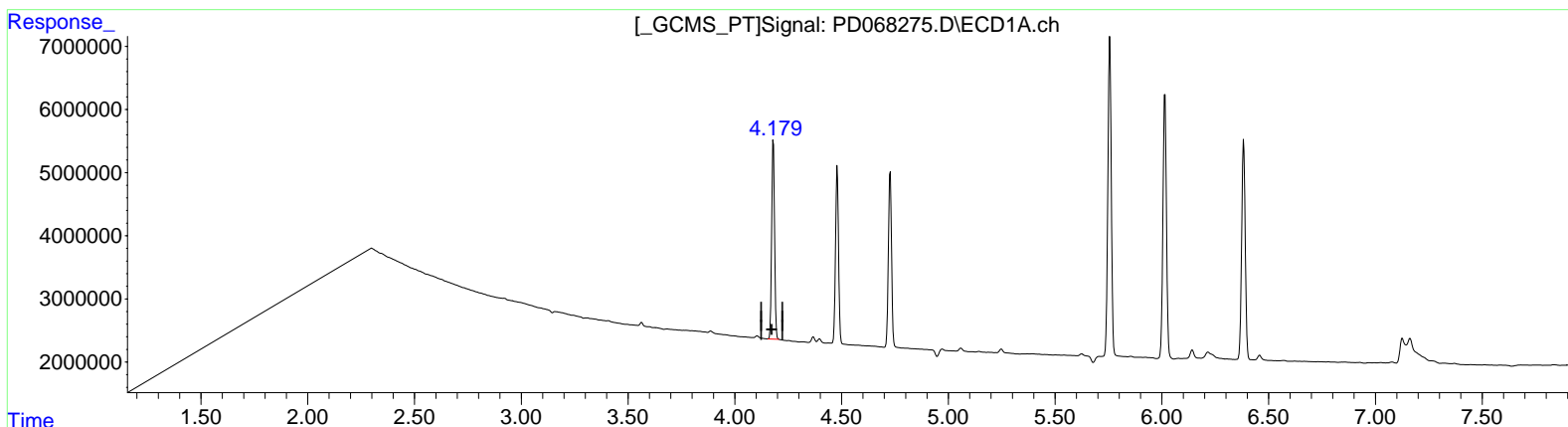
Instrument :
 ECD_D
ClientSampleId :
 PEST-GPC2-BLANK-SPIKE

Manual IntegrationsAPPROVED

Reviewed By :Abdul Mirza 03/02/2022
 Supervised By :Ankita Jodhani 03/02/2022

Integration File signal 1: autoint1.e
 Integration File signal 2: autoint2.e
 Quant Time: Mar 02 05:01:16 2022
 Quant Method : Z:\pestpcbsrv\HPCHEM1\ECD_D\Method\PD022822CLP.M
 Quant Title : GC Extractables
 QLast Update : Mon Feb 28 15:58:45 2022
 Response via : Initial Calibration
 Integrator: ChemStation

Volume Inj. : 1 µl
 Signal #1 Phase : ZB-MR2 Signal #2 Phase: ZB-MR1
 Signal #1 Info : 30M x 0.32mm x0.2 Signal #2 Info : 30M x 0.32mm x 0.50µm



(3) gamma-BHC (Lindane) (MA)

4.179min 21.064 ng/ml m
 response 29618206

(3) gamma-BHC (Lindane) #2 (MA)

4.863min 19.071 ng/ml m
 response 221591634

Data Path : Z:\pestpcbsrv\HPCHEM1\ECD_D\Data\PD030222\
 Data File : PD068275.D
 Signal(s) : Signal #1: ECD1A.ch Signal #2: ECD2B.ch
 Acq On : 01 Mar 2022 14:53
 Operator : AR\AJ
 Sample : N1676-12
 Misc :
 ALS Vial : 6 Sample Multiplier: 1

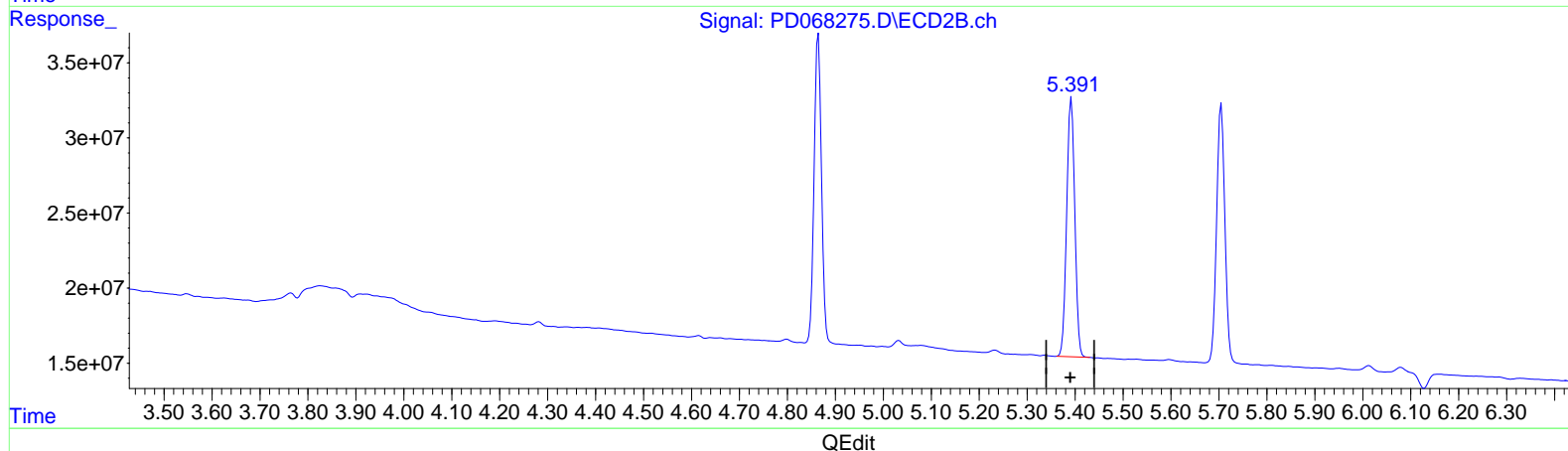
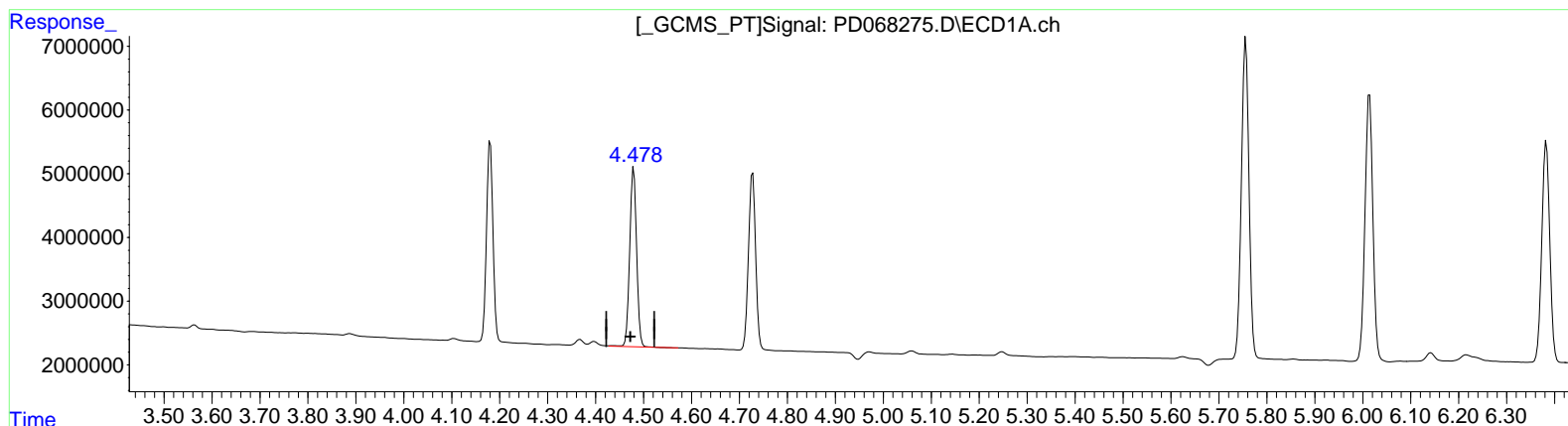
Instrument :
 ECD_D
ClientSampleId :
 PEST-GPC2-BLANK-SPIKE

Manual IntegrationsAPPROVED

Reviewed By :Abdul Mirza 03/02/2022
 Supervised By :Ankita Jodhani 03/02/2022

Integration File signal 1: autoint1.e
 Integration File signal 2: autoint2.e
 Quant Time: Mar 02 05:01:16 2022
 Quant Method : Z:\pestpcbsrv\HPCHEM1\ECD_D\Method\PD022822CLP.M
 Quant Title : GC Extractables
 QLast Update : Mon Feb 28 15:58:45 2022
 Response via : Initial Calibration
 Integrator: ChemStation

Volume Inj. : 1 µl
 Signal #1 Phase : ZB-MR2 Signal #2 Phase: ZB-MR1
 Signal #1 Info : 30M x 0.32mm x0.2 Signal #2 Info : 30M x 0.32mm x 0.50µm



(4) Heptachlor (MA)
 4.480min 20.611 ng/ml
 response 28262010

(4) Heptachlor #2 (MA)
 5.392min 18.772 ng/ml
 response 200336222

Data Path : Z:\pestpcbsrv\HPCHEM1\ECD_D\Data\PD030222\
 Data File : PD068275.D
 Signal(s) : Signal #1: ECD1A.ch Signal #2: ECD2B.ch
 Acq On : 01 Mar 2022 14:53
 Operator : AR\AJ
 Sample : N1676-12
 Misc :
 ALS Vial : 6 Sample Multiplier: 1

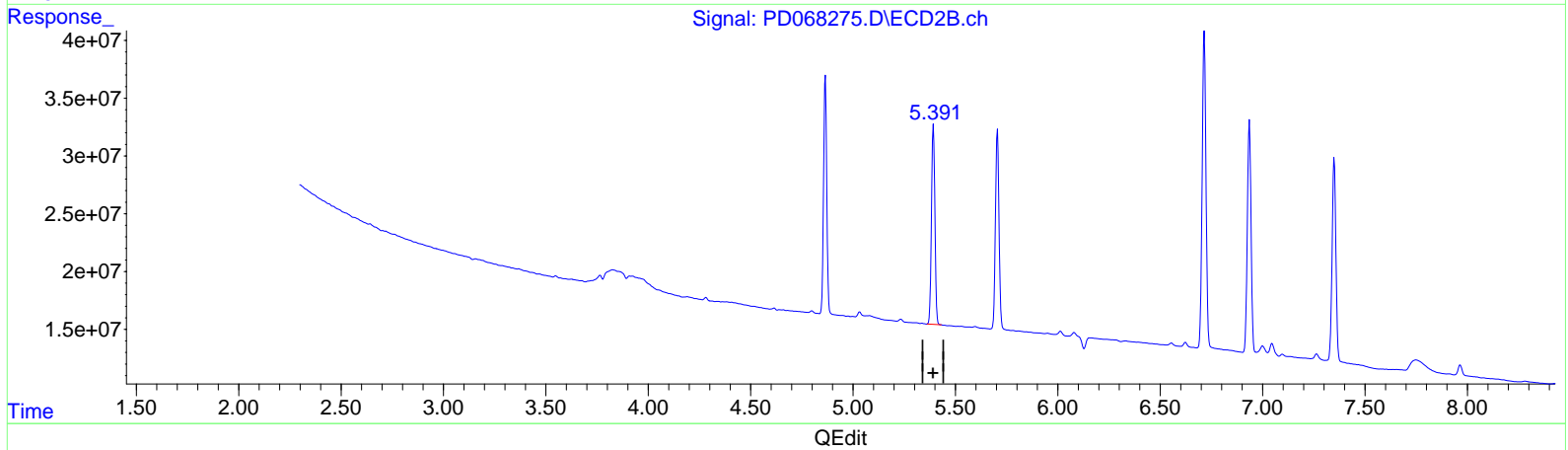
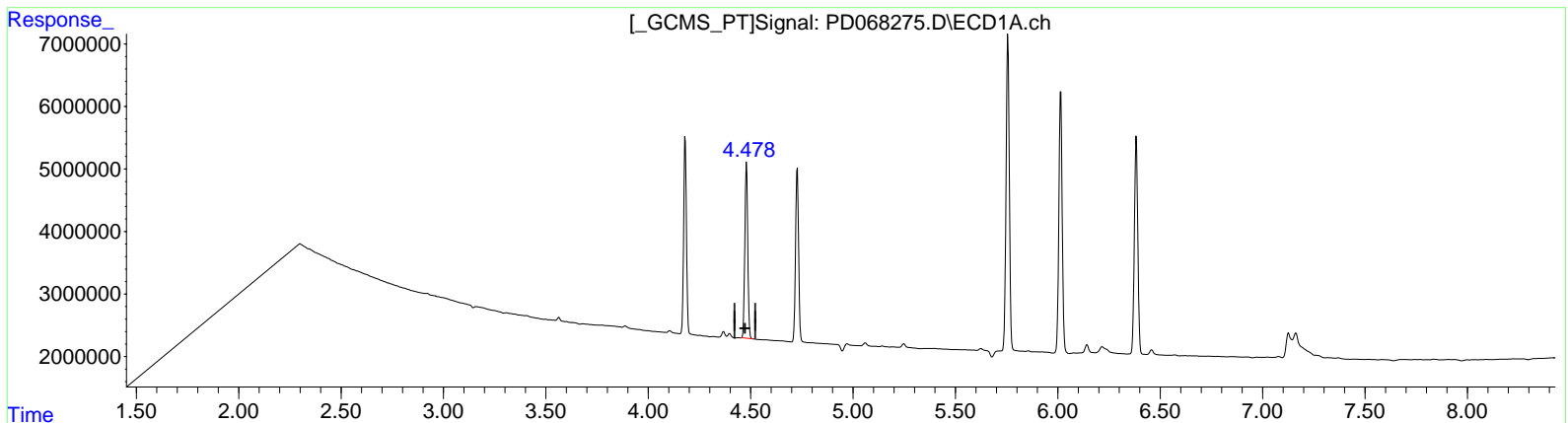
Instrument :
 ECD_D
ClientSampleId :
 PEST-GPC2-BLANK-SPIKE

Manual IntegrationsAPPROVED

Reviewed By :Abdul Mirza 03/02/2022
 Supervised By :Ankita Jodhani 03/02/2022

Integration File signal 1: autoint1.e
 Integration File signal 2: autoint2.e
 Quant Time: Mar 02 05:01:16 2022
 Quant Method : Z:\pestpcbsrv\HPCHEM1\ECD_D\Method\PD022822CLP.M
 Quant Title : GC Extractables
 QLast Update : Mon Feb 28 15:58:45 2022
 Response via : Initial Calibration
 Integrator: ChemStation

Volume Inj. : 1 µl
 Signal #1 Phase : ZB-MR2 Signal #2 Phase: ZB-MR1
 Signal #1 Info : 30M x 0.32mm x0.2 Signal #2 Info : 30M x 0.32mm x 0.50µm



(4) Heptachlor (MA)
 4.478min 20.304 ng/ml m
 response 27841572

(4) Heptachlor #2 (MA)
 5.392min 18.772 ng/ml
 response 200336222

Data Path : Z:\pestpcbsrv\HPCHEM1\ECD_D\Data\PD030222\
 Data File : PD068275.D
 Signal(s) : Signal #1: ECD1A.ch Signal #2: ECD2B.ch
 Acq On : 01 Mar 2022 14:53
 Operator : AR\AJ
 Sample : N1676-12
 Misc :
 ALS Vial : 6 Sample Multiplier: 1

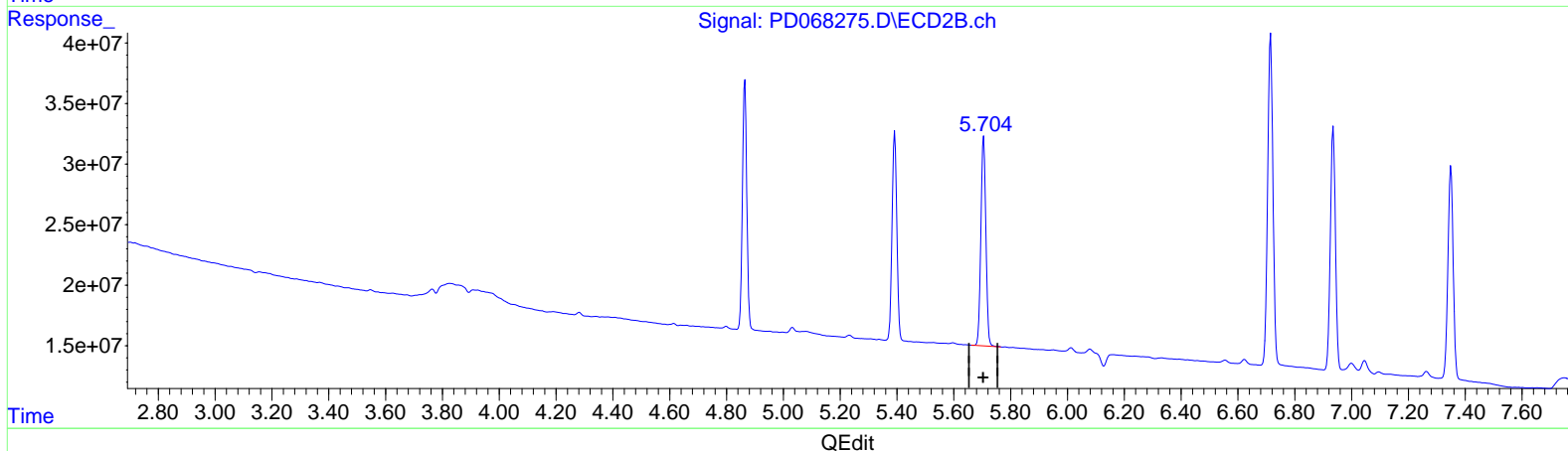
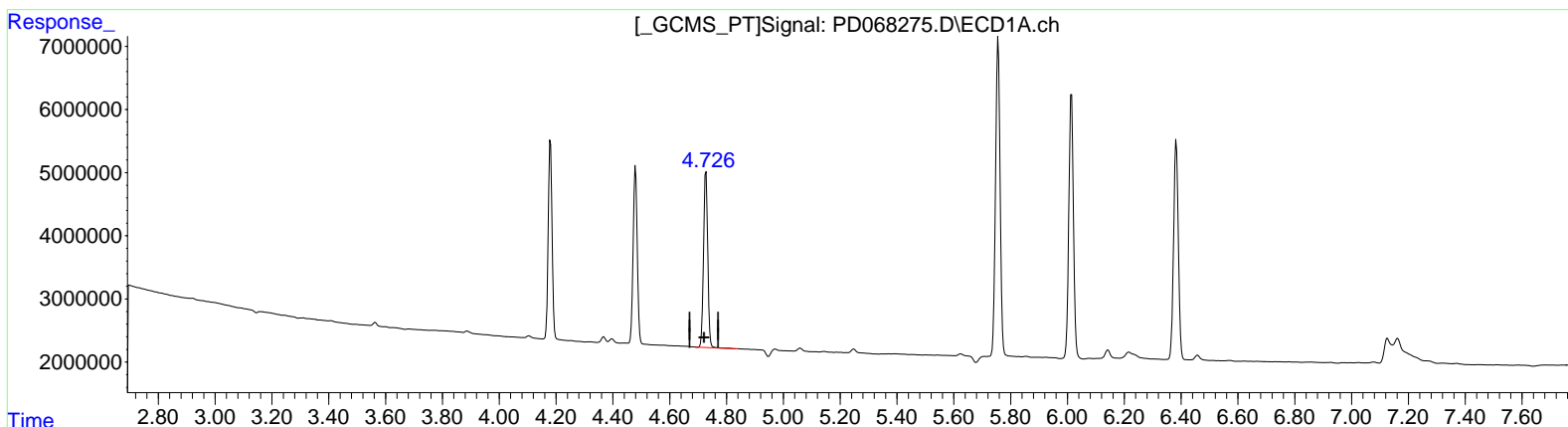
Instrument :
 ECD_D
ClientSampleId :
 PEST-GPC2-BLANK-SPIKE

Manual IntegrationsAPPROVED

Reviewed By :Abdul Mirza 03/02/2022
 Supervised By :Ankita Jodhani 03/02/2022

Integration File signal 1: autoint1.e
 Integration File signal 2: autoint2.e
 Quant Time: Mar 02 05:01:16 2022
 Quant Method : Z:\pestpcbsrv\HPCHEM1\ECD_D\Method\PD022822CLP.M
 Quant Title : GC Extractables
 QLast Update : Mon Feb 28 15:58:45 2022
 Response via : Initial Calibration
 Integrator: ChemStation

Volume Inj. : 1 µl
 Signal #1 Phase : ZB-MR2 Signal #2 Phase: ZB-MR1
 Signal #1 Info : 30M x 0.32mm x0.2 Signal #2 Info : 30M x 0.32mm x 0.50µm



(5) Aldrin (MB)
 4.728min 20.504 ng/ml
 response 28989694

(5) Aldrin #2 (MB)
 5.705min 18.598 ng/ml
 response 209258804

Data Path : Z:\pestpcbsrv\HPCHEM1\ECD_D\Data\PD030222\
 Data File : PD068275.D
 Signal(s) : Signal #1: ECD1A.ch Signal #2: ECD2B.ch
 Acq On : 01 Mar 2022 14:53
 Operator : AR\AJ
 Sample : N1676-12
 Misc :
 ALS Vial : 6 Sample Multiplier: 1

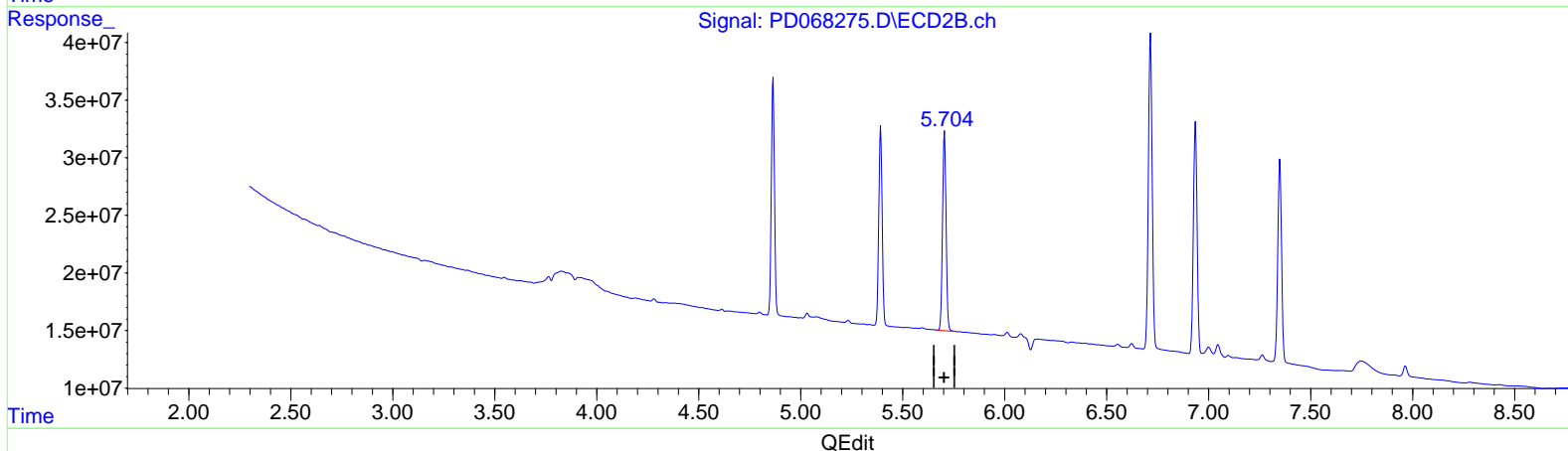
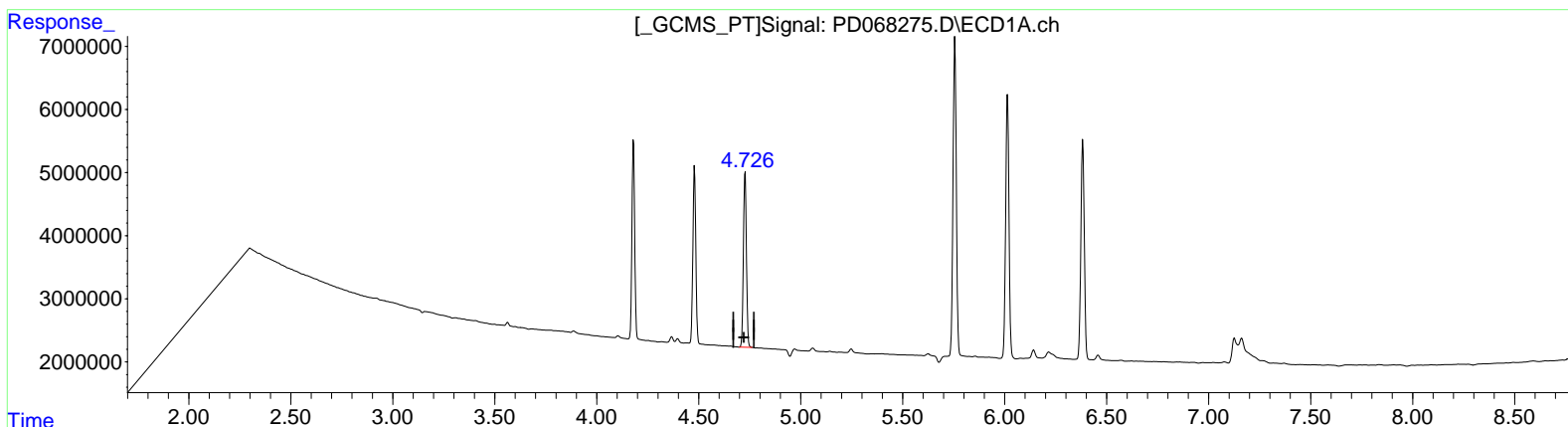
Instrument :
 ECD_D
ClientSampleId :
 PEST-GPC2-BLANK-SPIKE

Manual IntegrationsAPPROVED

Reviewed By :Abdul Mirza 03/02/2022
 Supervised By :Ankita Jodhani 03/02/2022

Integration File signal 1: autoint1.e
 Integration File signal 2: autoint2.e
 Quant Time: Mar 02 05:01:16 2022
 Quant Method : Z:\pestpcbsrv\HPCHEM1\ECD_D\Method\PD022822CLP.M
 Quant Title : GC Extractables
 QLast Update : Mon Feb 28 15:58:45 2022
 Response via : Initial Calibration
 Integrator: ChemStation

Volume Inj. : 1 µl
 Signal #1 Phase : ZB-MR2 Signal #2 Phase: ZB-MR1
 Signal #1 Info : 30M x 0.32mm x0.2 Signal #2 Info : 30M x 0.32mm x 0.50µm



(5) Aldrin (MB)
 4.726min 20.343 ng/ml m
 response 28762696

(5) Aldrin #2 (MB)
 5.705min 18.598 ng/ml
 response 209258804

Data Path : Z:\pestpcbsrv\HPCHEM1\ECD_D\Data\PD030222\
 Data File : PD068275.D
 Signal(s) : Signal #1: ECD1A.ch Signal #2: ECD2B.ch
 Acq On : 01 Mar 2022 14:53
 Operator : AR\AJ
 Sample : N1676-12
 Misc :
 ALS Vial : 6 Sample Multiplier: 1

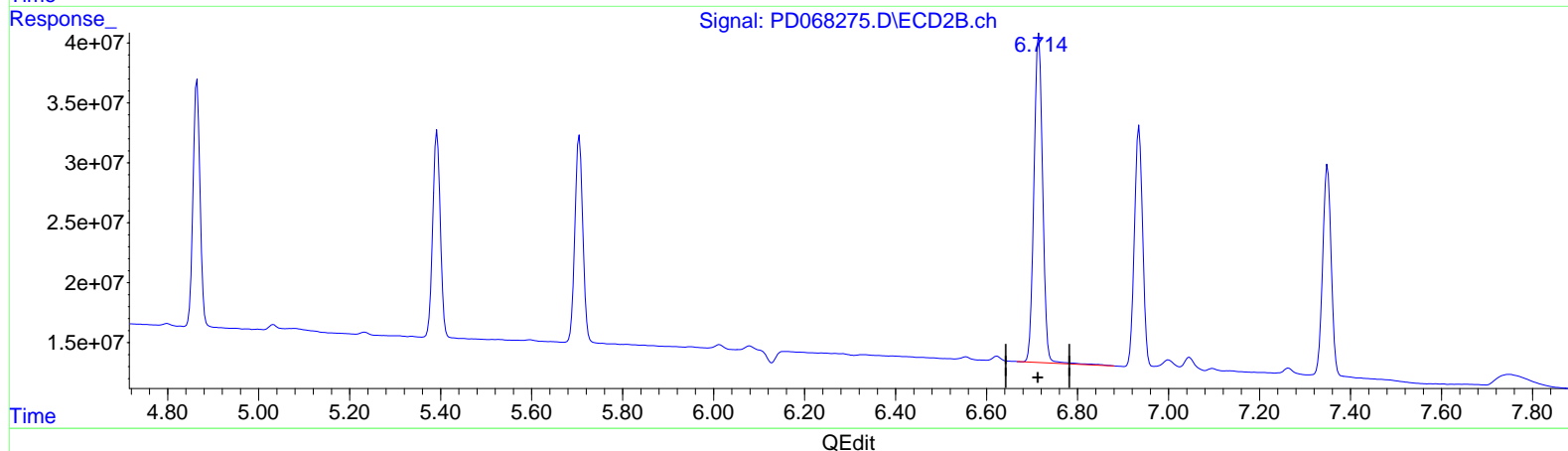
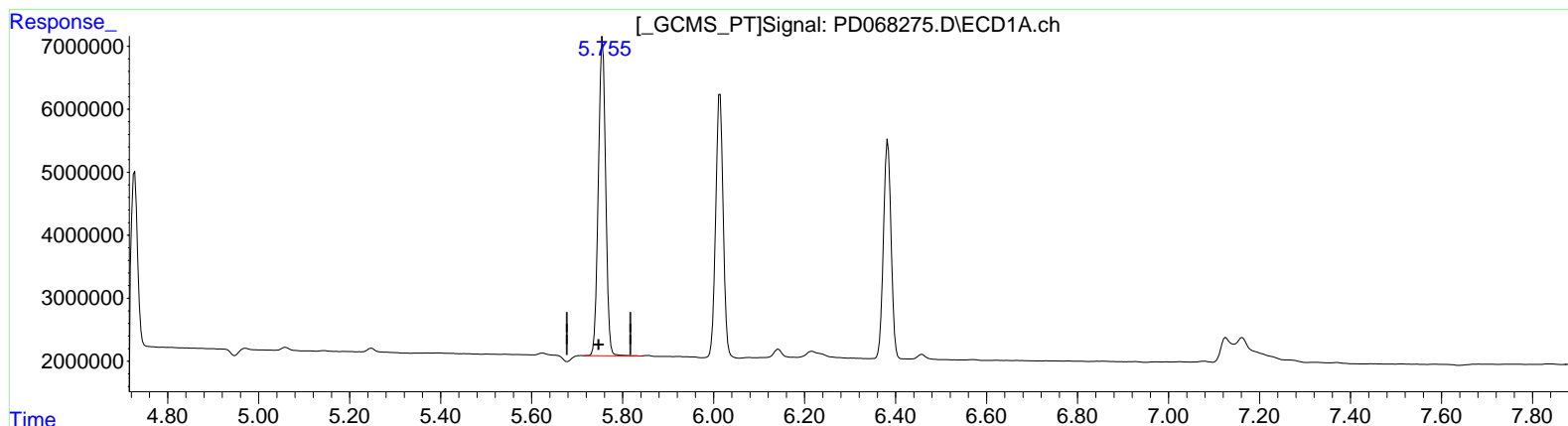
Instrument :
 ECD_D
ClientSampleId :
 PEST-GPC2-BLANK-SPIKE

Manual IntegrationsAPPROVED

Reviewed By :Abdul Mirza 03/02/2022
 Supervised By :Ankita Jodhani 03/02/2022

Integration File signal 1: autoint1.e
 Integration File signal 2: autoint2.e
 Quant Time: Mar 02 05:01:16 2022
 Quant Method : Z:\pestpcbsrv\HPCHEM1\ECD_D\Method\PD022822CLP.M
 Quant Title : GC Extractables
 QLast Update : Mon Feb 28 15:58:45 2022
 Response via : Initial Calibration
 Integrator: ChemStation

Volume Inj. : 1 µl
 Signal #1 Phase : ZB-MR2 Signal #2 Phase: ZB-MR1
 Signal #1 Info : 30M x 0.32mm x0.2 Signal #2 Info : 30M x 0.32mm x 0.50µm



(13) Dieldrin (MA)
 5.756min 42.241 ng/ml
 response 56240005

(13) Dieldrin #2 (MA)
 6.715min 38.672 ng/ml
 response 362676529

Data Path : Z:\pestpcbsrv\HPCHEM1\ECD_D\Data\PD030222\
 Data File : PD068275.D
 Signal(s) : Signal #1: ECD1A.ch Signal #2: ECD2B.ch
 Acq On : 01 Mar 2022 14:53
 Operator : AR\AJ
 Sample : N1676-12
 Misc :
 ALS Vial : 6 Sample Multiplier: 1

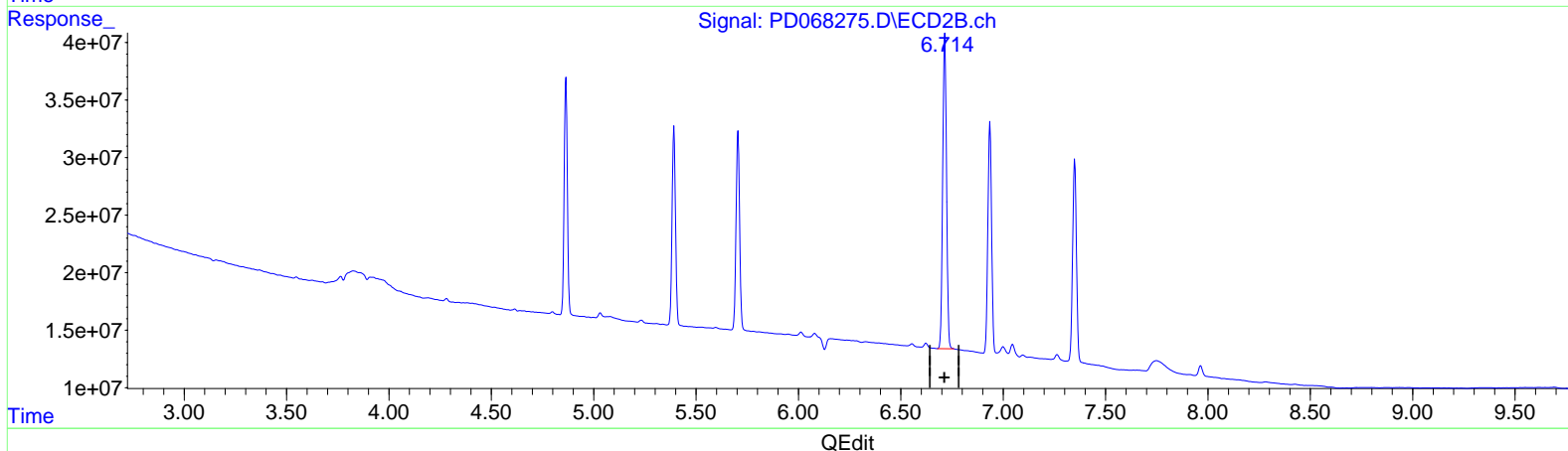
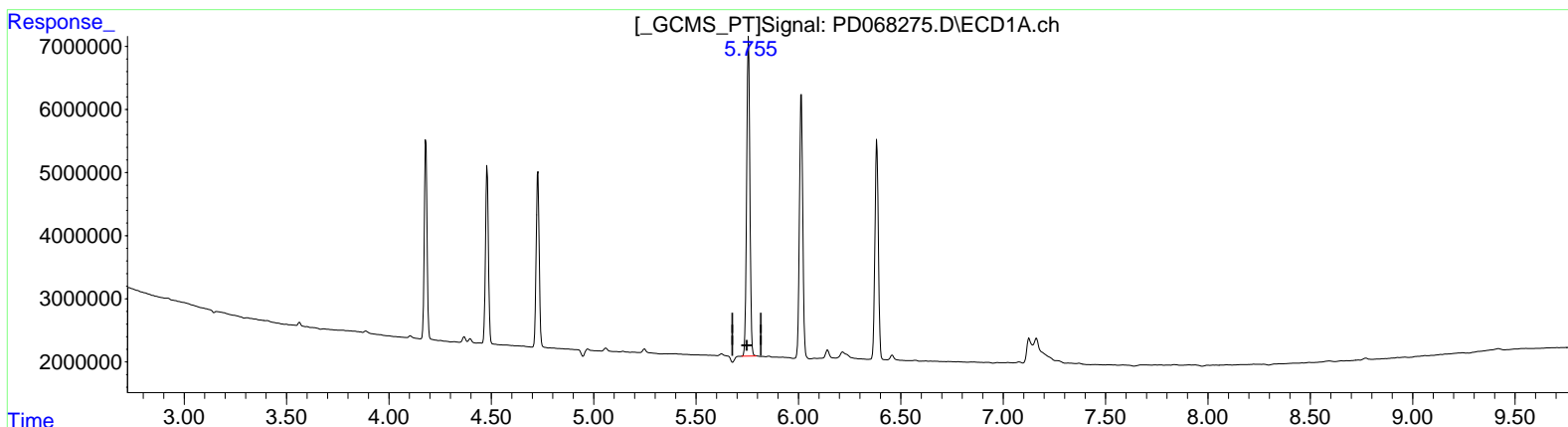
Instrument :
 ECD_D
 ClientSampleId :
 PEST-GPC2-BLANK-SPIKE

Manual Integrations APPROVED

Reviewed By : Abdul Mirza 03/02/2022
 Supervised By : Ankita Jodhani 03/02/2022

Integration File signal 1: autoint1.e
 Integration File signal 2: autoint2.e
 Quant Time: Mar 02 05:01:16 2022
 Quant Method : Z:\pestpcbsrv\HPCHEM1\ECD_D\Method\PD022822CLP.M
 Quant Title : GC Extractables
 QLast Update : Mon Feb 28 15:58:45 2022
 Response via : Initial Calibration
 Integrator: ChemStation

Volume Inj. : 1 µl
 Signal #1 Phase : ZB-MR2 Signal #2 Phase: ZB-MR1
 Signal #1 Info : 30M x 0.32mm x 0.2 Signal #2 Info : 30M x 0.32mm x 0.50µm



(13) Dieldrin (MA)
 5.755min 41.946 ng/ml m
 response 55846375

(13) Dieldrin #2 (MA)
 6.714min 37.915 ng/ml m
 response 355577489