

Data Path : Z:\pestpcbsrv\HPCHEM1\ECD_D\Data\PD030223\
 Data File : PD074080.D
 Signal(s) : Signal #1: ECD1A.ch Signal #2: ECD2B.ch
 Acq On : 01 Mar 2023 12:02
 Operator : AR\AJ
 Sample : PSTDCCC050
 Misc :
 ALS Vial : 4 Sample Multiplier: 1

Instrument :
 ECD_D
 ClientSampleId :

Integration File signal 1: autoint1.e
 Integration File signal 2: autoint2.e
 Quant Time: Mar 01 20:22:53 2023
 Quant Method : Z:\pestpcbsrv\HPCHEM1\ECD_D\Method\PD030123.M
 Quant Title : GC Extractables
 QLast Update : Wed Mar 01 01:35:06 2023
 Response via : Initial Calibration
 Integrator: ChemStation

Volume Inj. : 2 µl
 Signal #1 Phase : ZB-MR1 Signal #2 Phase: ZB-MR2
 Signal #1 Info : 30M x 0.32mm x0.5 Signal #2 Info : 30M x 0.32mm x 0.25µm

Compound	RT#1	RT#2	Resp#1	Resp#2	ng/ml	ng/ml
System Monitoring Compounds						
1) SA Tetrachlo...	3.559	2.773	111.4E6	56556016	48.615	47.750
28) SA Decachlor...	9.107	7.930	130.1E6	58984556	48.808	48.175
Target Compounds						
2) A alpha-BHC	4.016	3.277	195.9E6	87530765	51.166	48.914
3) MA gamma-BHC...	4.350	3.608	169.2E6	81120740	48.173	48.906
4) MA Heptachlor	4.942	3.950	182.5E6	77632446	53.027	48.253
5) MB Aldrin	5.286	4.231	176.4E6	79706946	52.167	48.725
6) B beta-BHC	4.543	3.903	69863221	35058588	46.489	47.683
7) B delta-BHC	4.792	4.135	170.2E6	80769943	60.713	48.467
8) B Heptachlo...	5.713	4.734	149.9E6	72263480	52.632	48.476
9) A Endosulfan I	6.100	5.105	148.5E6	68769967	51.406	49.029
10) B gamma-Chl...	5.969	4.985	160.3E6	73947125	52.351	48.526
11) B alpha-Chl...	6.049	5.049	158.9E6	73337223	51.537	48.682
12) B 4,4'-DDE	6.221	5.240	147.9E6	68164962	52.082	49.140
13) MA Dieldrin	6.376	5.371	156.8E6	72299359	51.674	48.960
14) MA Endrin	6.606	5.647	127.1E6	63415679	48.442	48.540
15) B Endosulfa...	6.824	5.939	125.4E6	58957660	43.108	45.815
16) A 4,4'-DDD	6.738	5.795	120.4E6	56818707	51.383	49.237
17) MA 4,4'-DDT	7.053	6.047	133.4E6	59457143	48.916	49.641
18) B Endrin al...	6.954	6.120	103.4E6	48375676	49.877	47.540
19) B Endosulfa...	7.189	6.343	128.1E6	59303589	49.728	48.889
20) A Methoxychlor	7.528	6.623	72167479	31511364	48.593	48.174
21) B Endrin ke...	7.676	6.850	148.7E6	72231432	50.719	49.697
22) Mirex	8.152	7.035	109.6E6	56687843	48.594	49.133
25) Chlordane-3	5.969	4.985	160.3E6	73947125	313.291	435.181 #
26) Chlordane-4	6.049	5.049	158.9E6	73337223	253.546	451.131 #
27) Chlordane-5	0.000	5.939	0	58957660	N.D.	916.808 #

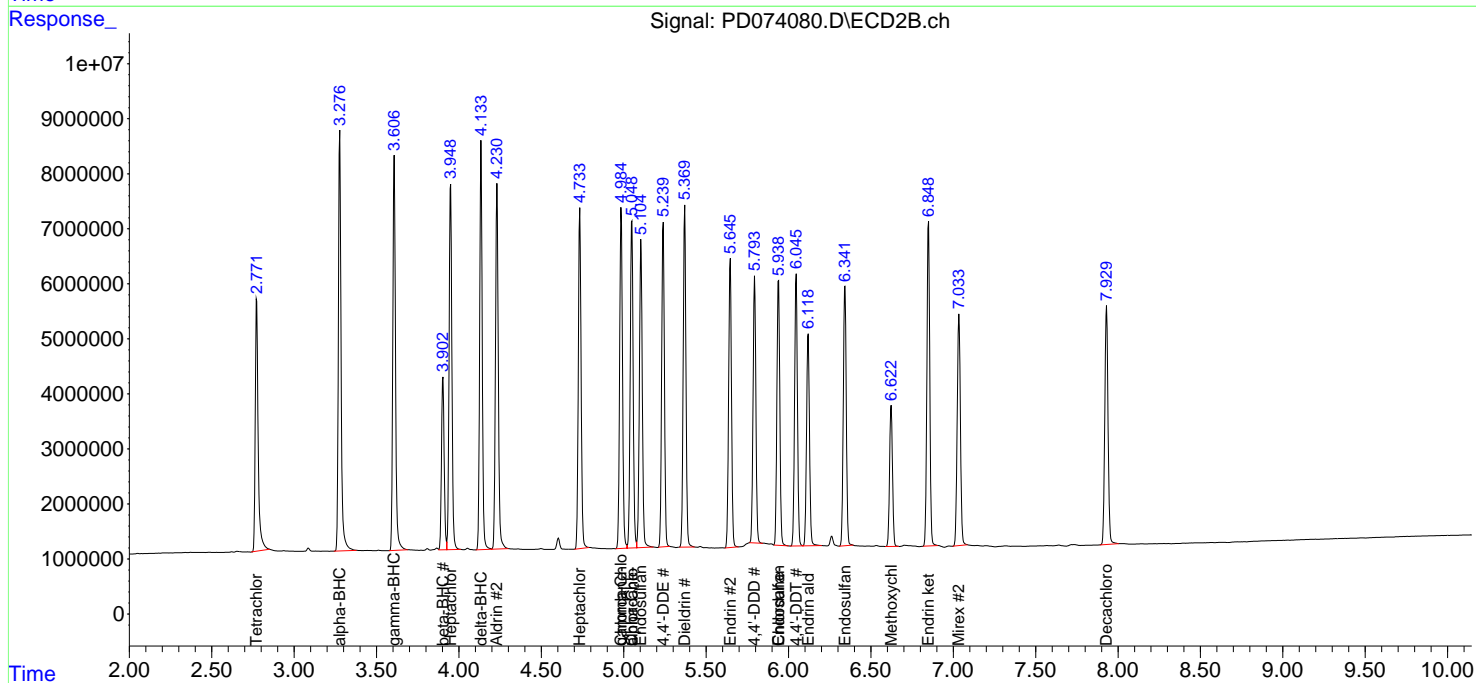
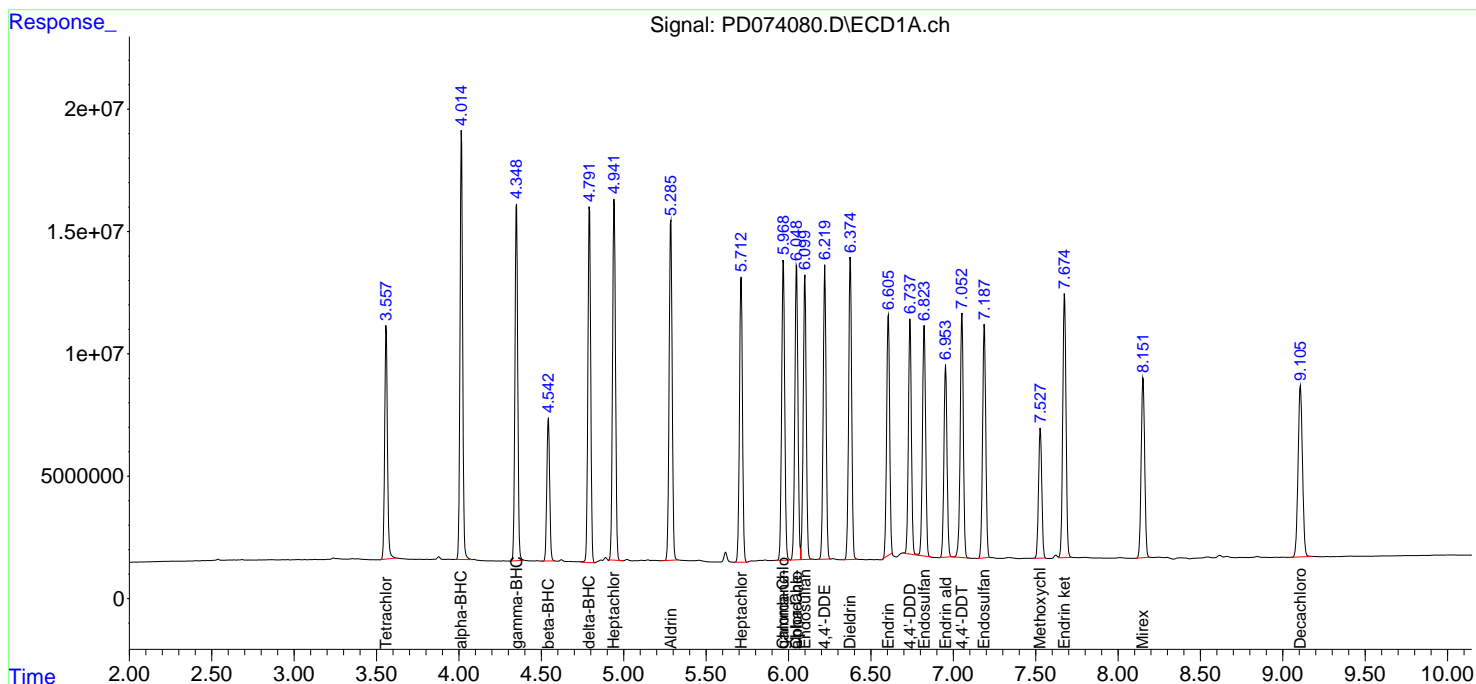
(f)=RT Delta > 1/2 Window (#)=Amounts differ by > 25% (m)=manual int.

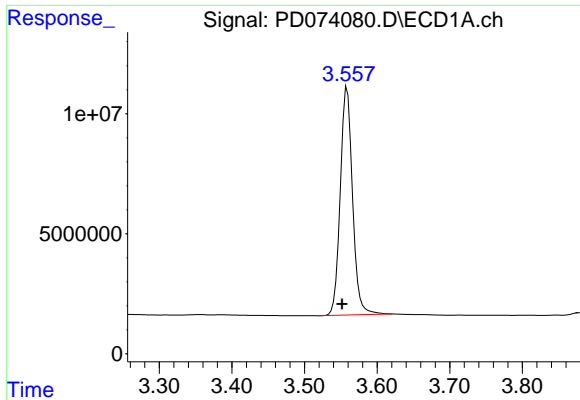
Data Path : Z:\pestpcbsrv\HPCHEM1\ECD_D\Data\PD030223\
 Data File : PD074080.D
 Signal(s) : Signal #1: ECD1A.ch Signal #2: ECD2B.ch
 Acq On : 01 Mar 2023 12:02
 Operator : AR\AJ
 Sample : PSTDCCC050
 Misc :
 ALS Vial : 4 Sample Multiplier: 1

Instrument :
 ECD_D
 ClientSampleId :

Integration File signal 1: autoint1.e
 Integration File signal 2: autoint2.e
 Quant Time: Mar 01 20:22:53 2023
 Quant Method : Z:\pestpcbsrv\HPCHEM1\ECD_D\Method\PD030123.M
 Quant Title : GC Extractables
 QLast Update : Wed Mar 01 01:35:06 2023
 Response via : Initial Calibration
 Integrator: ChemStation

Volume Inj. : 2 µl
 Signal #1 Phase : ZB-MR1 Signal #2 Phase: ZB-MR2
 Signal #1 Info : 30M x 0.32mm x0.5 Signal #2 Info : 30M x 0.32mm x 0.25µm

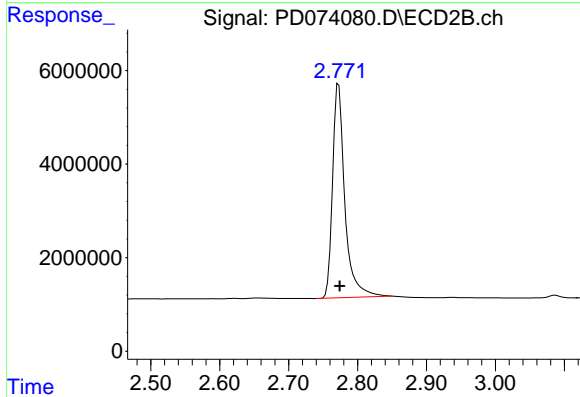




#1 Tetrachloro-m-xylene

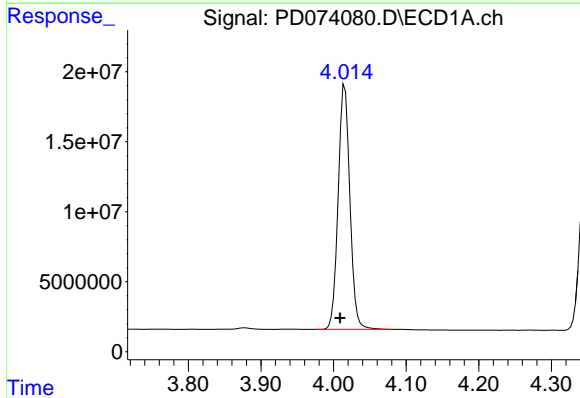
R.T.: 3.559 min
 Delta R.T.: 0.007 min
 Response: 111381102
 Conc: 48.61 ng/ml

Instrument :
 ECD_D
 ClientSampleId :



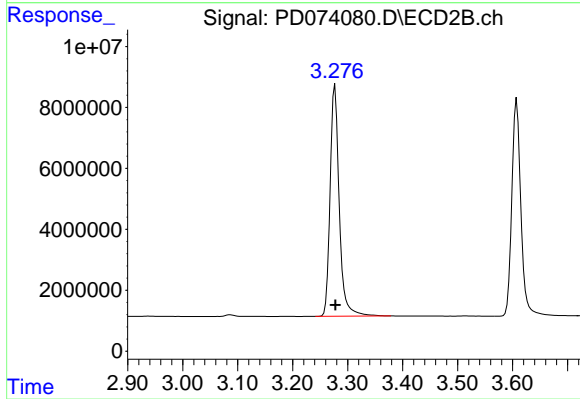
#1 Tetrachloro-m-xylene

R.T.: 2.773 min
 Delta R.T.: -0.002 min
 Response: 56556016
 Conc: 47.75 ng/ml



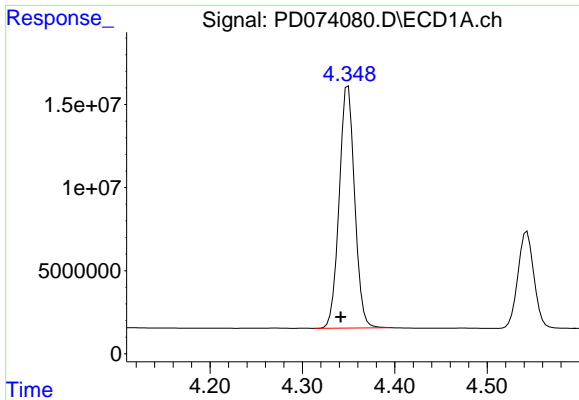
#2 alpha-BHC

R.T.: 4.016 min
 Delta R.T.: 0.007 min
 Response: 195885577
 Conc: 51.17 ng/ml



#2 alpha-BHC

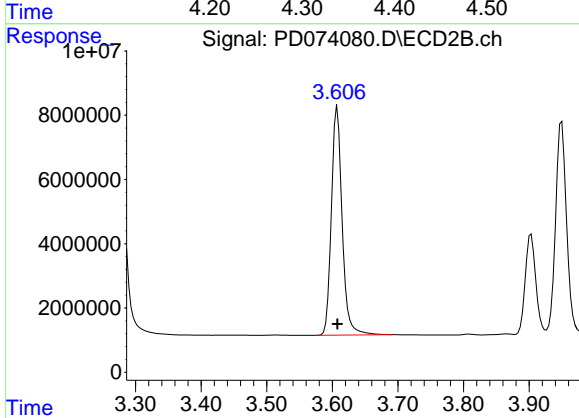
R.T.: 3.277 min
 Delta R.T.: 0.000 min
 Response: 87530765
 Conc: 48.91 ng/ml



#3 gamma-BHC (Lindane)

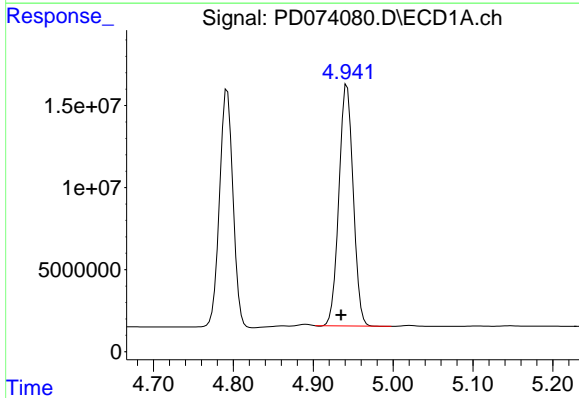
R.T.: 4.350 min
 Delta R.T.: 0.008 min
 Response: 169244414
 Conc: 48.17 ng/ml

Instrument :
 ECD_D
 ClientSampleId :



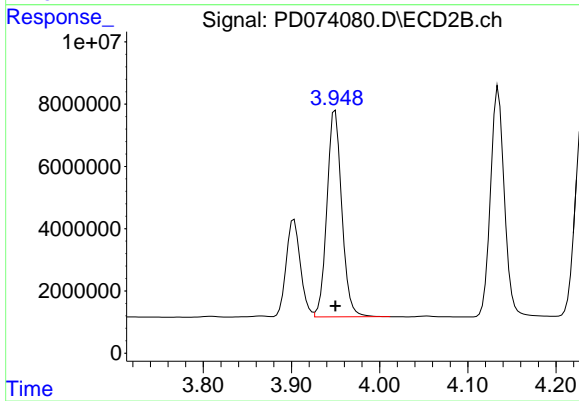
#3 gamma-BHC (Lindane)

R.T.: 3.608 min
 Delta R.T.: 0.000 min
 Response: 81120740
 Conc: 48.91 ng/ml



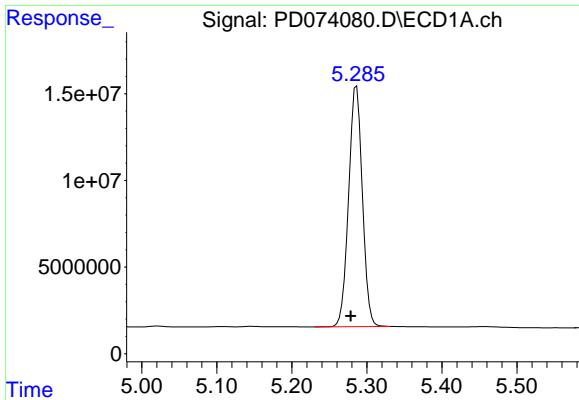
#4 Heptachlor

R.T.: 4.942 min
 Delta R.T.: 0.007 min
 Response: 182462556
 Conc: 53.03 ng/ml



#4 Heptachlor

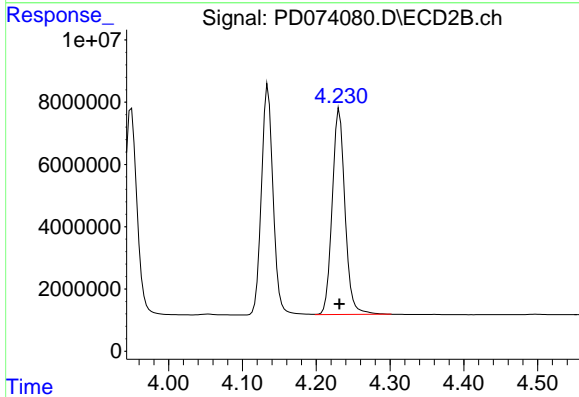
R.T.: 3.950 min
 Delta R.T.: 0.000 min
 Response: 77632446
 Conc: 48.25 ng/ml



#5 Aldrin

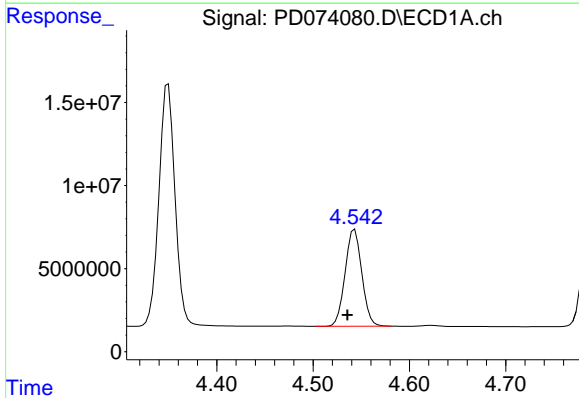
R.T.: 5.286 min
 Delta R.T.: 0.008 min
 Response: 176383932
 Conc: 52.17 ng/ml

Instrument :
 ECD_D
 ClientSampleId :



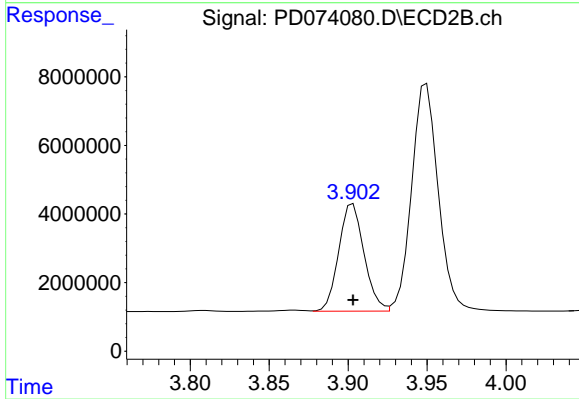
#5 Aldrin

R.T.: 4.231 min
 Delta R.T.: 0.000 min
 Response: 79706946
 Conc: 48.72 ng/ml



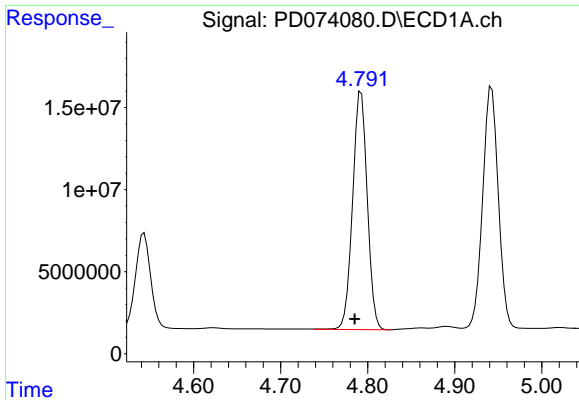
#6 beta-BHC

R.T.: 4.543 min
 Delta R.T.: 0.007 min
 Response: 69863221
 Conc: 46.49 ng/ml



#6 beta-BHC

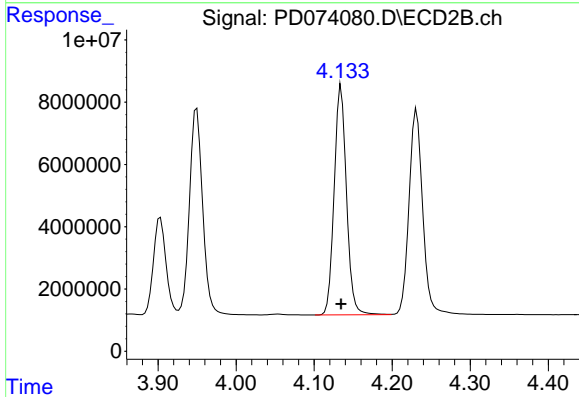
R.T.: 3.903 min
 Delta R.T.: 0.000 min
 Response: 35058588
 Conc: 47.68 ng/ml



#7 delta-BHC

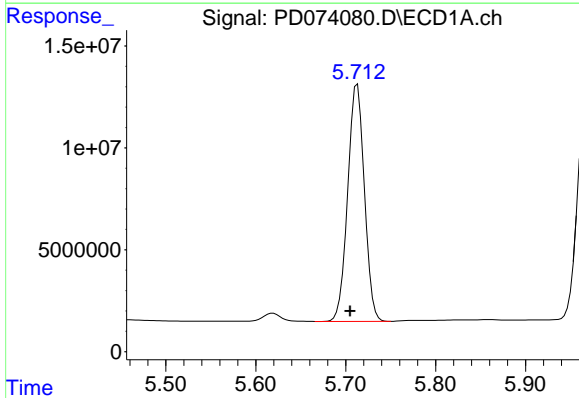
R.T.: 4.792 min
Delta R.T.: 0.007 min
Response: 170177543
Conc: 60.71 ng/ml

Instrument :
ECD_D
ClientSampleId :



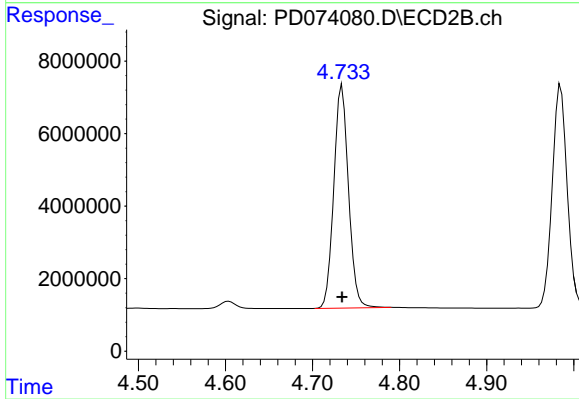
#7 delta-BHC

R.T.: 4.135 min
Delta R.T.: 0.000 min
Response: 80769943
Conc: 48.47 ng/ml



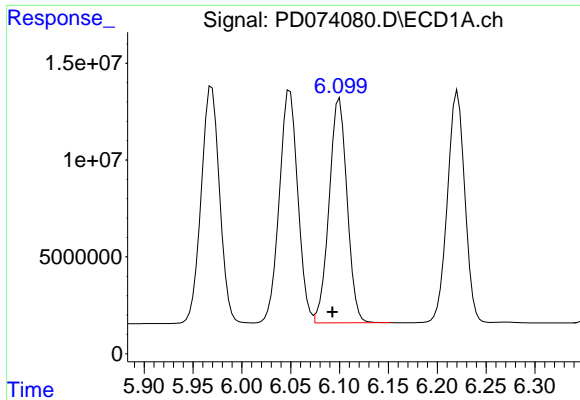
#8 Heptachlor epoxide

R.T.: 5.713 min
Delta R.T.: 0.008 min
Response: 149883386
Conc: 52.63 ng/ml



#8 Heptachlor epoxide

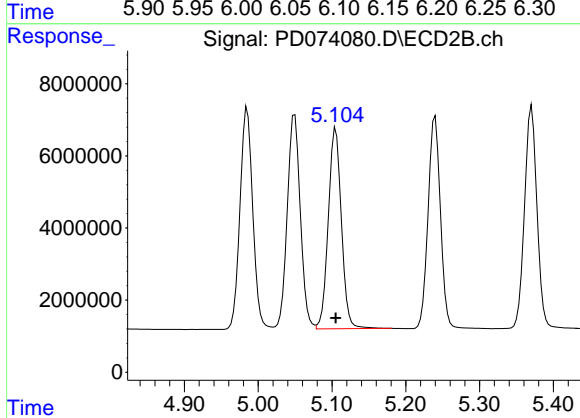
R.T.: 4.734 min
Delta R.T.: 0.000 min
Response: 72263480
Conc: 48.48 ng/ml



#9 Endosulfan I

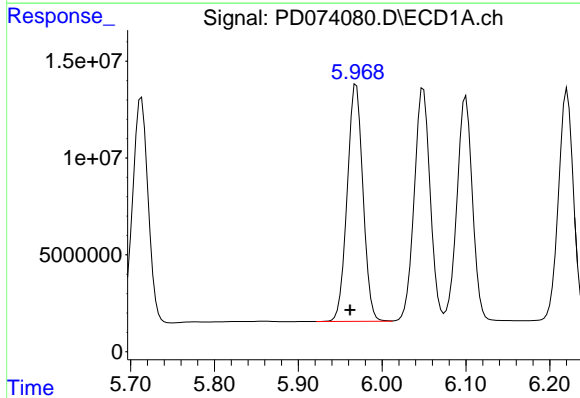
R.T.: 6.100 min
 Delta R.T.: 0.007 min
 Response: 148528952
 Conc: 51.41 ng/ml

Instrument :
 ECD_D
 ClientSampleId :



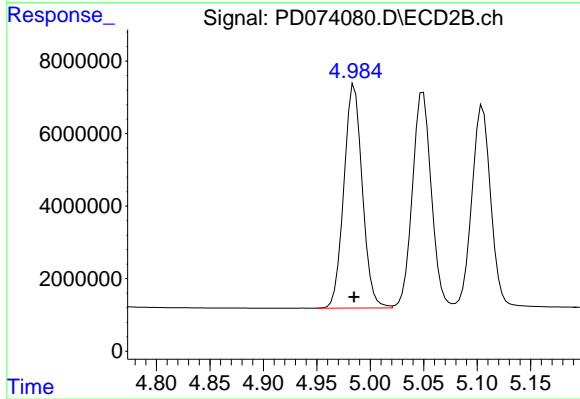
#9 Endosulfan I

R.T.: 5.105 min
 Delta R.T.: 0.000 min
 Response: 68769967
 Conc: 49.03 ng/ml



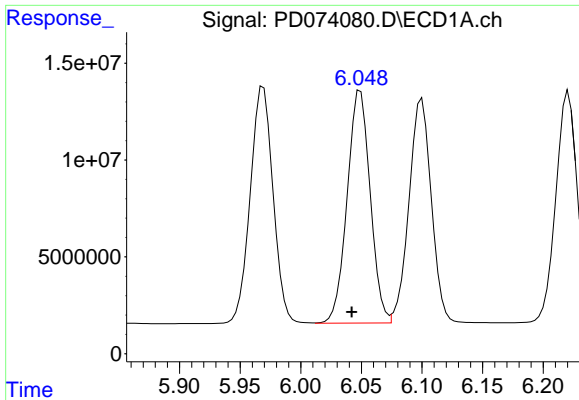
#10 gamma-Chlordane

R.T.: 5.969 min
 Delta R.T.: 0.007 min
 Response: 160265847
 Conc: 52.35 ng/ml



#10 gamma-Chlordane

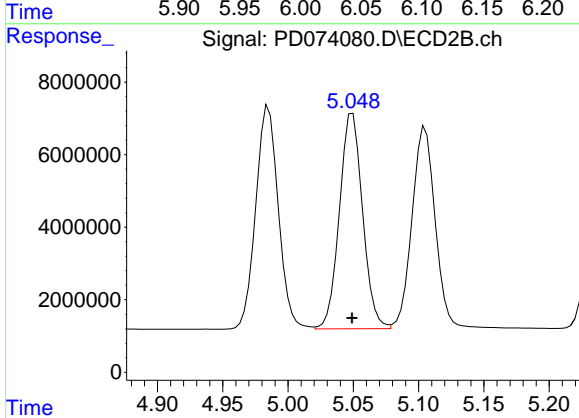
R.T.: 4.985 min
 Delta R.T.: 0.000 min
 Response: 73947125
 Conc: 48.53 ng/ml



#11 alpha-Chlordane

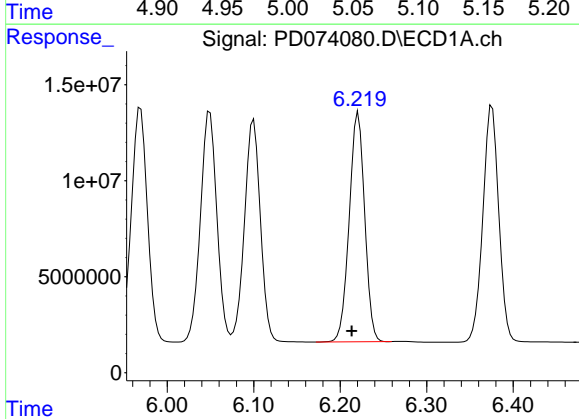
R.T.: 6.049 min
 Delta R.T.: 0.007 min
 Response: 158850890
 Conc: 51.54 ng/ml

Instrument :
 ECD_D
 ClientSampleId :



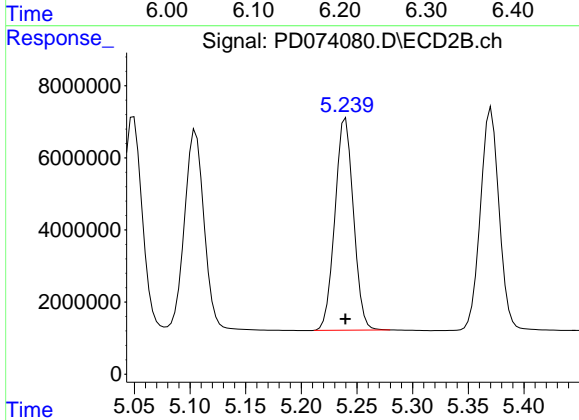
#11 alpha-Chlordane

R.T.: 5.049 min
 Delta R.T.: 0.000 min
 Response: 73337223
 Conc: 48.68 ng/ml



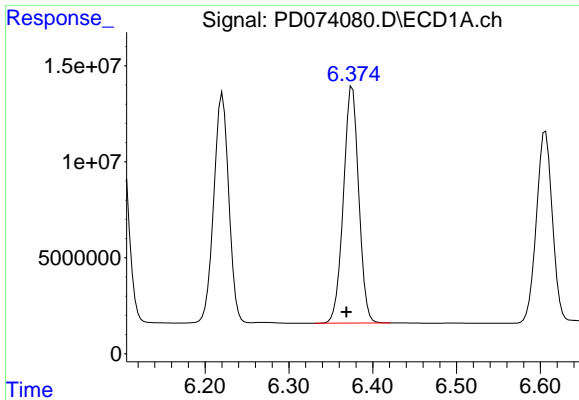
#12 4,4'-DDE

R.T.: 6.221 min
 Delta R.T.: 0.008 min
 Response: 147930388
 Conc: 52.08 ng/ml



#12 4,4'-DDE

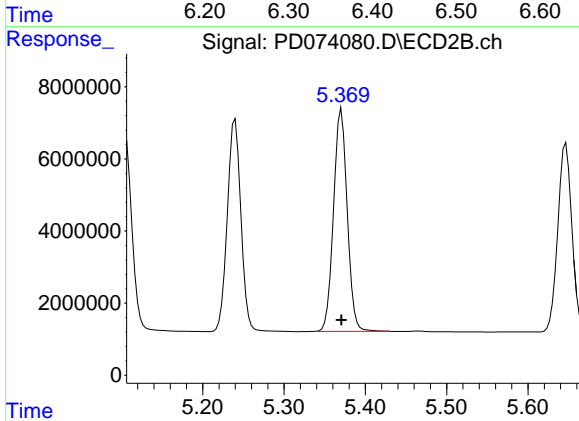
R.T.: 5.240 min
 Delta R.T.: 0.000 min
 Response: 68164962
 Conc: 49.14 ng/ml



#13 Dieldrin

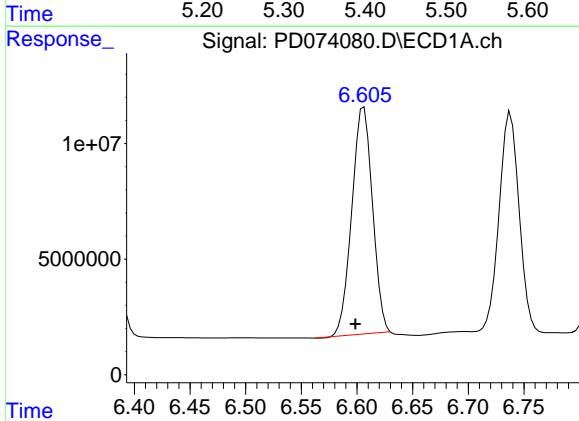
R.T.: 6.376 min
 Delta R.T.: 0.007 min
 Response: 156775608
 Conc: 51.67 ng/ml

Instrument :
 ECD_D
 ClientSampleId :



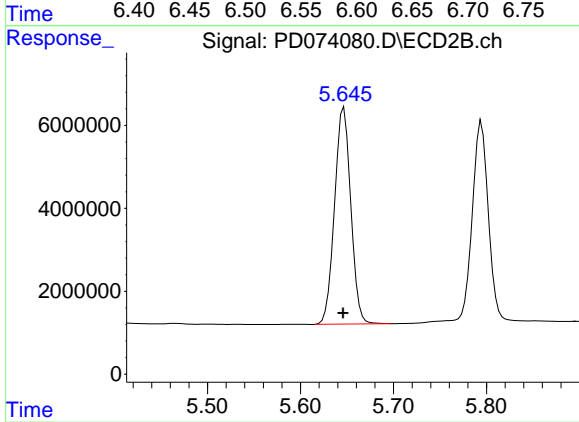
#13 Dieldrin

R.T.: 5.371 min
 Delta R.T.: 0.000 min
 Response: 72299359
 Conc: 48.96 ng/ml



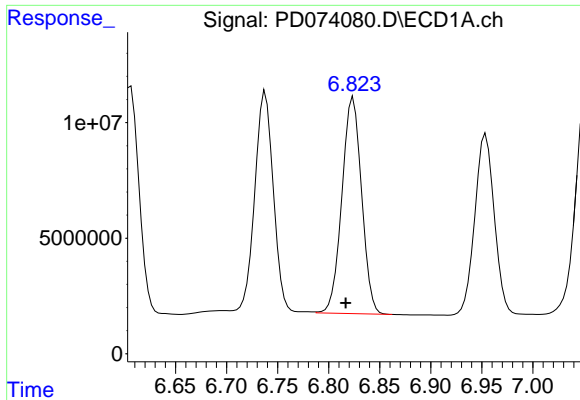
#14 Endrin

R.T.: 6.606 min
 Delta R.T.: 0.008 min
 Response: 127073075
 Conc: 48.44 ng/ml



#14 Endrin

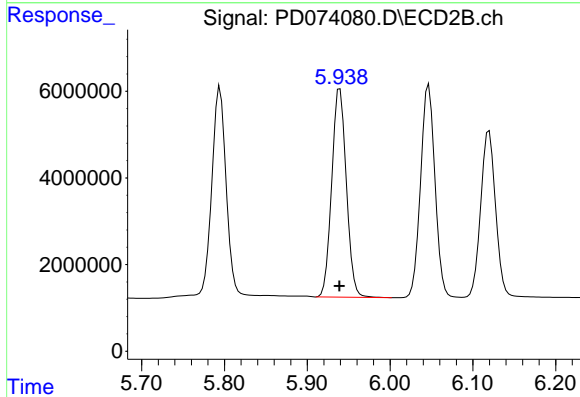
R.T.: 5.647 min
 Delta R.T.: 0.001 min
 Response: 63415679
 Conc: 48.54 ng/ml



#15 Endosulfan II

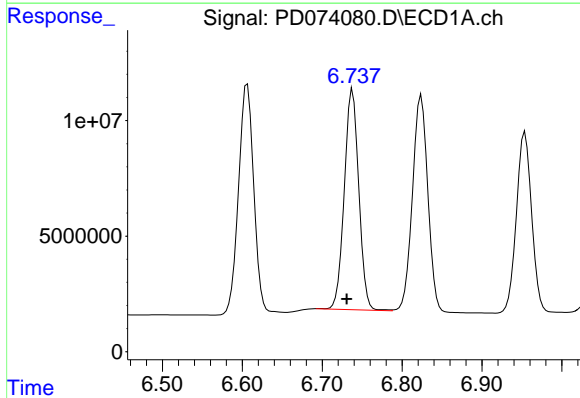
R.T.: 6.824 min
 Delta R.T.: 0.007 min
 Response: 125382769
 Conc: 43.11 ng/ml

Instrument :
 ECD_D
 ClientSampleId :



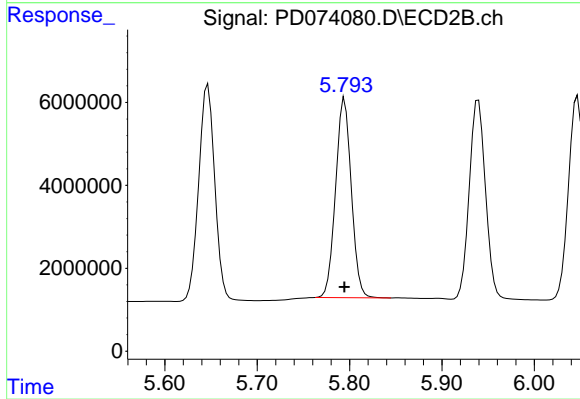
#15 Endosulfan II

R.T.: 5.939 min
 Delta R.T.: 0.000 min
 Response: 58957660
 Conc: 45.82 ng/ml



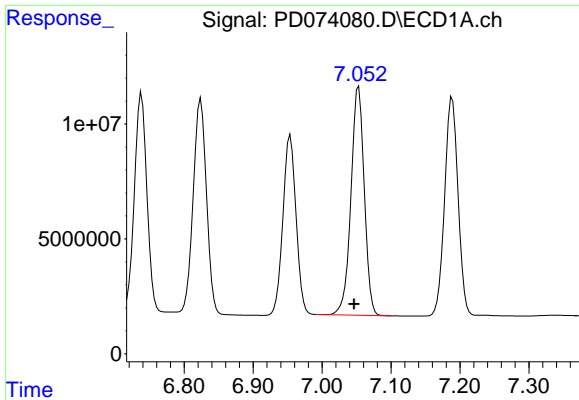
#16 4,4'-DDD

R.T.: 6.738 min
 Delta R.T.: 0.007 min
 Response: 120385794
 Conc: 51.38 ng/ml



#16 4,4'-DDD

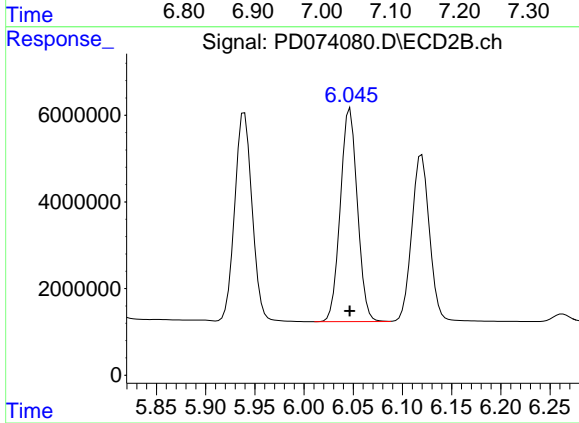
R.T.: 5.795 min
 Delta R.T.: 0.000 min
 Response: 56818707
 Conc: 49.24 ng/ml



#17 4,4'-DDT

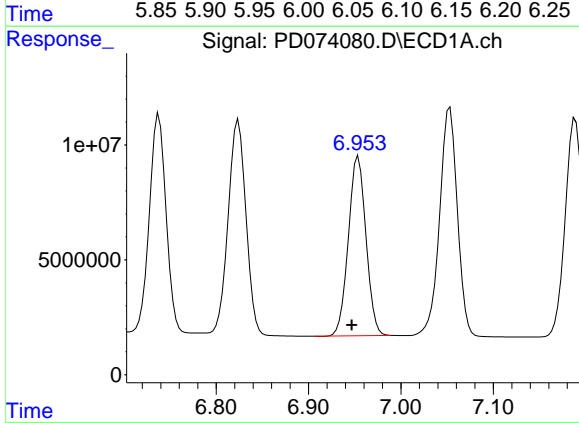
R.T.: 7.053 min
 Delta R.T.: 0.007 min
 Response: 133395358
 Conc: 48.92 ng/ml

Instrument :
 ECD_D
 ClientSampleId :



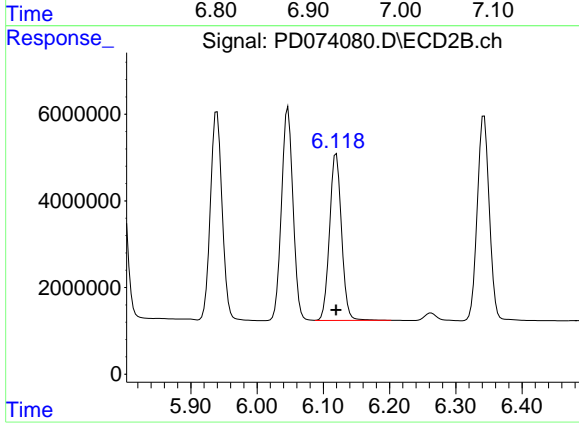
#17 4,4'-DDT

R.T.: 6.047 min
 Delta R.T.: 0.000 min
 Response: 59457143
 Conc: 49.64 ng/ml



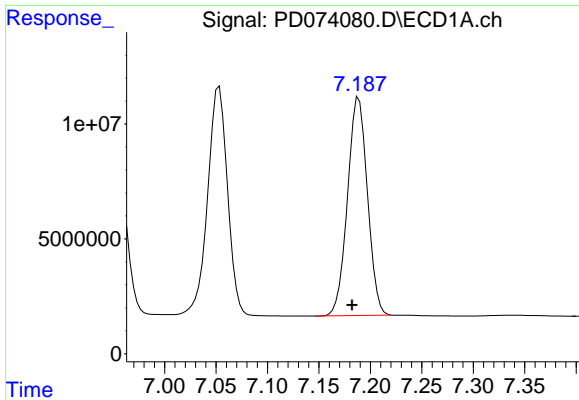
#18 Endrin aldehyde

R.T.: 6.954 min
 Delta R.T.: 0.007 min
 Response: 103398889
 Conc: 49.88 ng/ml



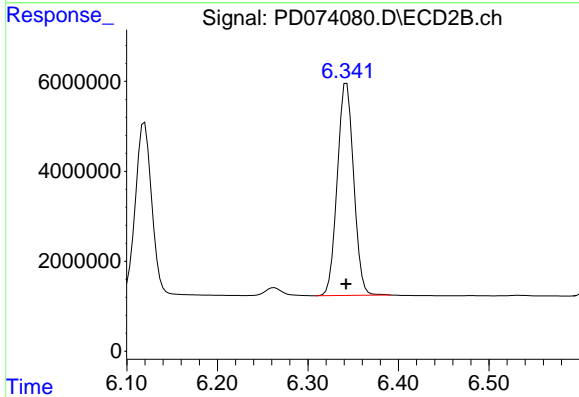
#18 Endrin aldehyde

R.T.: 6.120 min
 Delta R.T.: 0.000 min
 Response: 48375676
 Conc: 47.54 ng/ml

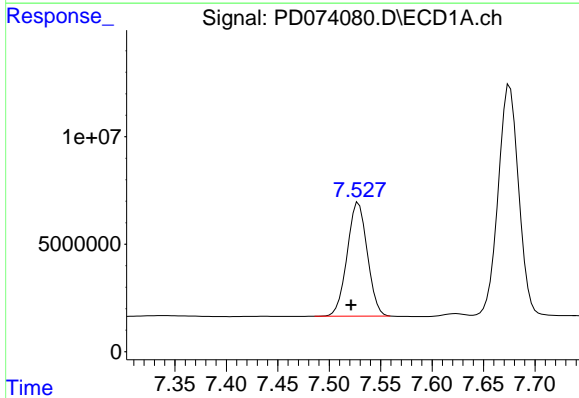


#19 Endosulfan Sulfate
 R.T.: 7.189 min
 Delta R.T.: 0.007 min
 Response: 128093357
 Conc: 49.73 ng/ml

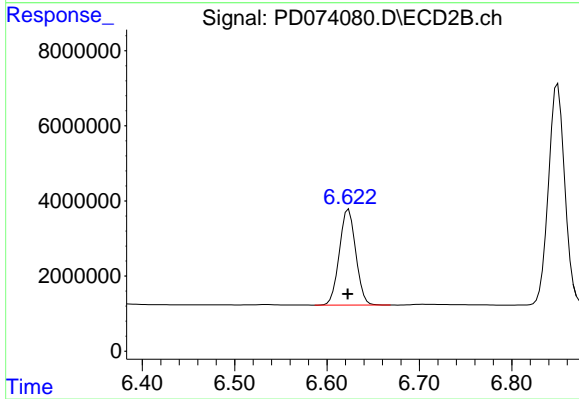
Instrument :
 ECD_D
 ClientSampleId :



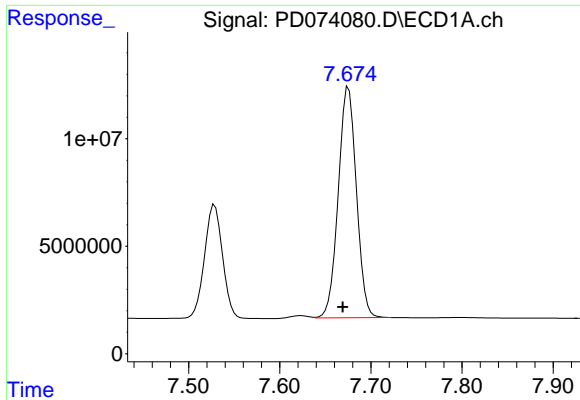
#19 Endosulfan Sulfate
 R.T.: 6.343 min
 Delta R.T.: 0.000 min
 Response: 59303589
 Conc: 48.89 ng/ml



#20 Methoxychlor
 R.T.: 7.528 min
 Delta R.T.: 0.007 min
 Response: 72167479
 Conc: 48.59 ng/ml



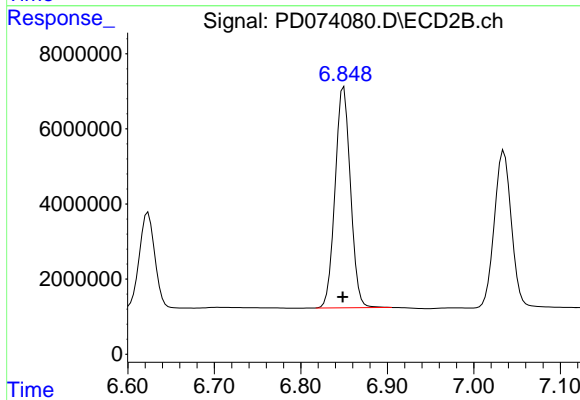
#20 Methoxychlor
 R.T.: 6.623 min
 Delta R.T.: 0.001 min
 Response: 31511364
 Conc: 48.17 ng/ml



#21 Endrin ketone

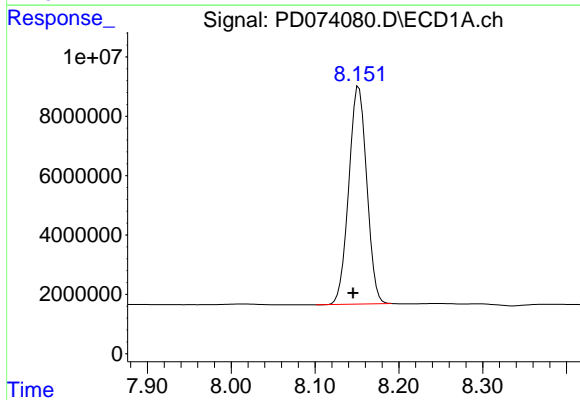
R.T.: 7.676 min
 Delta R.T.: 0.007 min
 Response: 148700470
 Conc: 50.72 ng/ml

Instrument :
 ECD_D
 ClientSampleId :



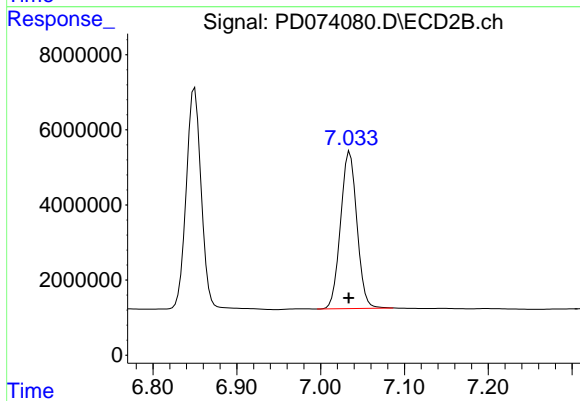
#21 Endrin ketone

R.T.: 6.850 min
 Delta R.T.: 0.001 min
 Response: 72231432
 Conc: 49.70 ng/ml



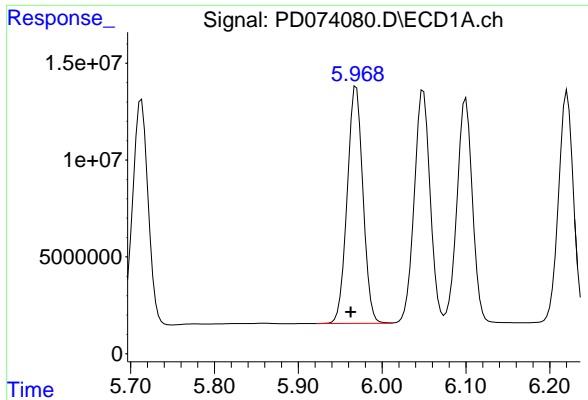
#22 Mirex

R.T.: 8.152 min
 Delta R.T.: 0.007 min
 Response: 109568317
 Conc: 48.59 ng/ml



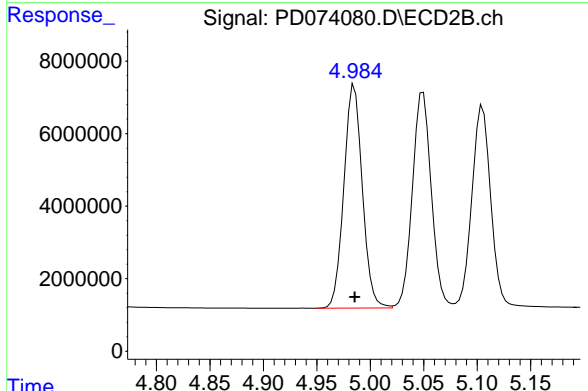
#22 Mirex

R.T.: 7.035 min
 Delta R.T.: 0.001 min
 Response: 56687843
 Conc: 49.13 ng/ml

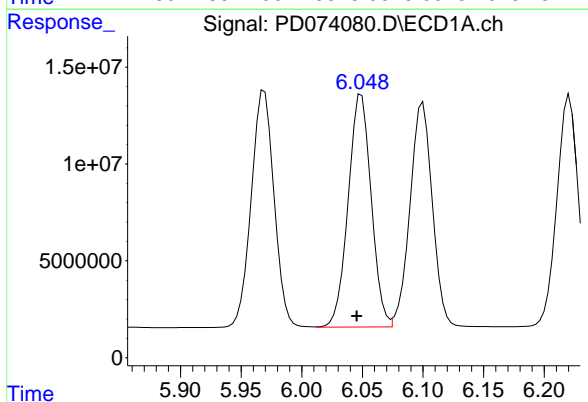


#25 Chlordane-3
 R.T.: 5.969 min
 Delta R.T.: 0.007 min
 Response: 160265847
 Conc: 313.29 ng/ml

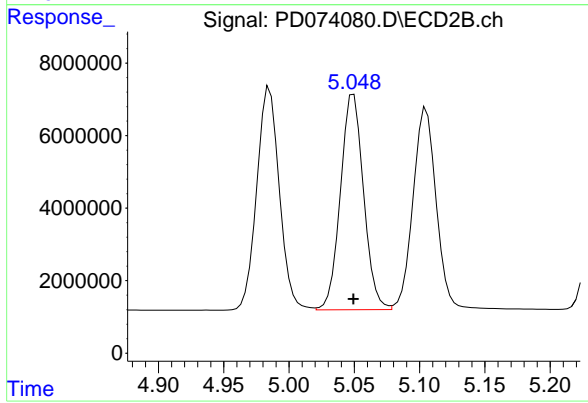
Instrument :
 ECD_D
 ClientSampleId :



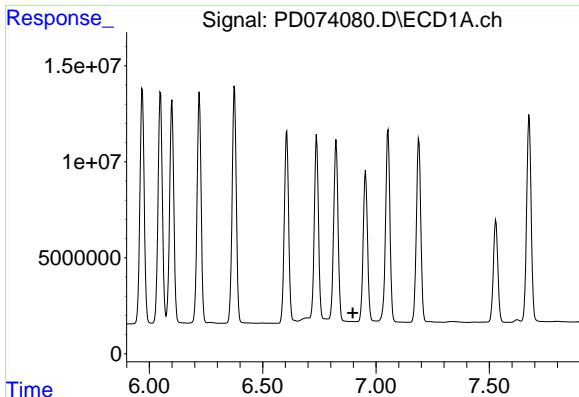
#25 Chlordane-3
 R.T.: 4.985 min
 Delta R.T.: 0.000 min
 Response: 73947125
 Conc: 435.18 ng/ml



#26 Chlordane-4
 R.T.: 6.049 min
 Delta R.T.: 0.004 min
 Response: 158850890
 Conc: 253.55 ng/ml



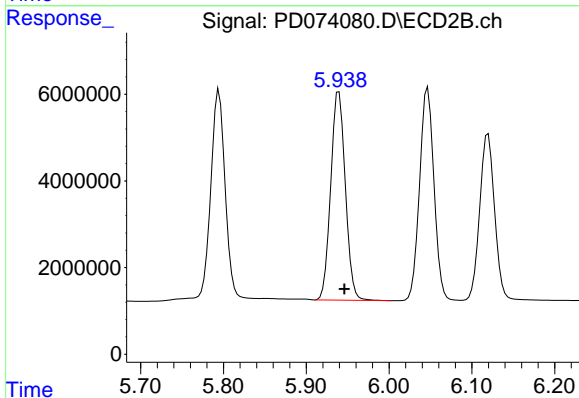
#26 Chlordane-4
 R.T.: 5.049 min
 Delta R.T.: 0.000 min
 Response: 73337223
 Conc: 451.13 ng/ml



#27 Chlordane-5

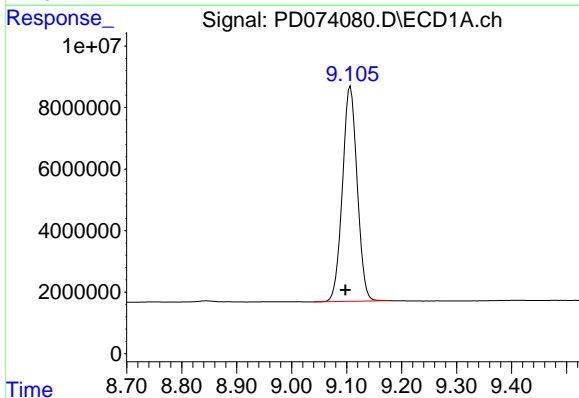
R.T.: 0.000 min
 Exp R.T.: 6.897 min
 Response: 0
 Conc: N.D.

Instrument :
 ECD_D
 ClientSampleId :



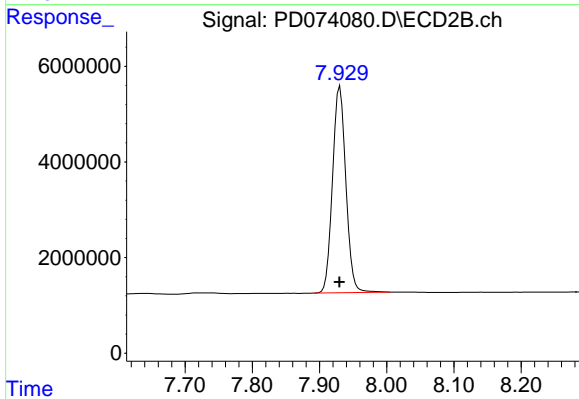
#27 Chlordane-5

R.T.: 5.939 min
 Delta R.T.: -0.007 min
 Response: 58957660
 Conc: 916.81 ng/ml



#28 Decachlorobiphenyl

R.T.: 9.107 min
 Delta R.T.: 0.009 min
 Response: 130097877
 Conc: 48.81 ng/ml



#28 Decachlorobiphenyl

R.T.: 7.930 min
 Delta R.T.: 0.001 min
 Response: 58984556
 Conc: 48.18 ng/ml