

Data Path : Z:\pestpcbsrv\HPCHEM1\ECD_D\Data\PD030223\
 Data File : PD074097.D
 Signal(s) : Signal #1: ECD1A.ch Signal #2: ECD2B.ch
 Acq On : 01 Mar 2023 18:23
 Operator : AR\AJ
 Sample : PB151103BL
 Misc :
 ALS Vial : 19 Sample Multiplier: 1

Instrument :
 ECD_D
 ClientSampleId :

Integration File signal 1: autoint1.e
 Integration File signal 2: autoint2.e
 Quant Time: Mar 01 20:42:35 2023
 Quant Method : Z:\pestpcbsrv\HPCHEM1\ECD_D\Method\PD030123.M
 Quant Title : GC Extractables
 QLast Update : Wed Mar 01 01:35:06 2023
 Response via : Initial Calibration
 Integrator: ChemStation

Volume Inj. : 2 µl
 Signal #1 Phase : ZB-MR2 Signal #2 Phase: ZB-MR2
 Signal #1 Info : 30M x 0.32mm x0.5 Signal #2 Info : 30M x 0.32mm x 0.25µm

Compound	RT#1	RT#2	Resp#1	Resp#2	ng/ml	ng/ml

System Monitoring Compounds						
1) SA Tetrachlo...	3.553	2.774	46298778	22856689	20.208	19.298
28) SA Decachlor...	9.097	7.929	58841000	25638688	22.075	20.940
Target Compounds						
3) MA gamma-BHC...	4.366f	0.000	141922	0	0.040	N.D. #
6) B beta-BHC	4.562f	0.000	62264	0	0.041	N.D. #
7) B delta-BHC	4.780	0.000	6003072	0	2.142	N.D. #
8) B Heptachlo...	5.698	0.000	2454678	0	0.862	N.D. #
12) B 4,4'-DDE	6.187f	0.000	483732	0	0.170	N.D. #
14) MA Endrin	0.000	5.661f	0	207053	N.D.	0.158 #
15) B Endosulfa...	6.837f	0.000	119652	0	0.041	N.D. #
21) B Endrin ke...	7.698f	0.000	595096	0	0.203	N.D. #
22) Mirex	8.153	0.000	420012	0	0.186	N.D. #

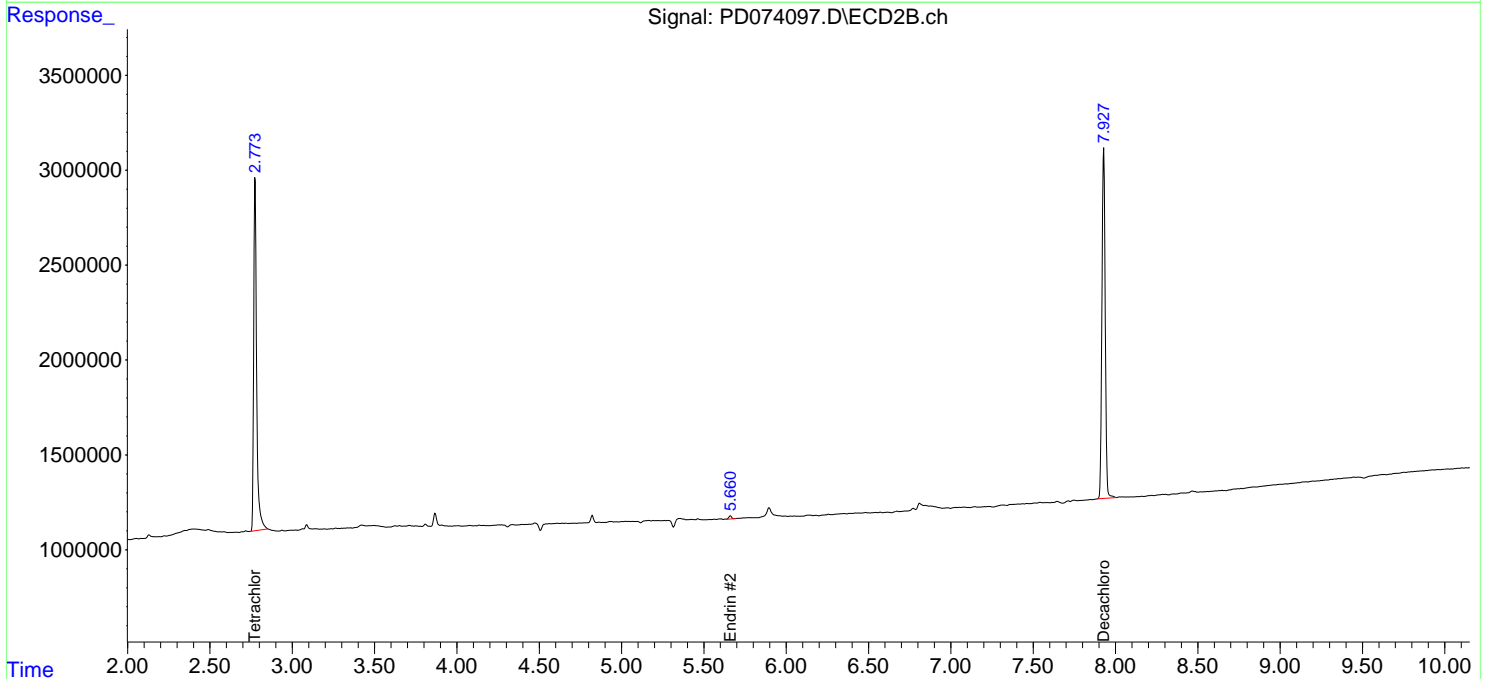
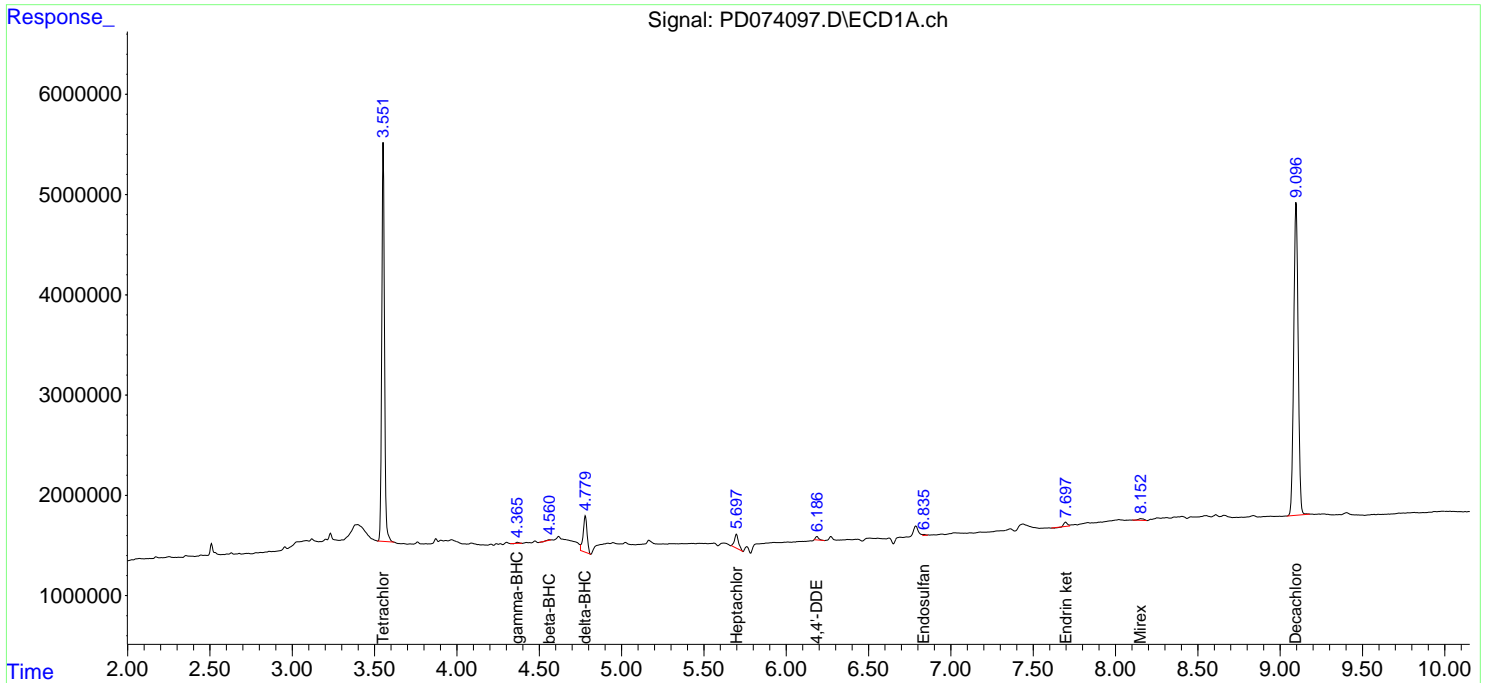
(f)=RT Delta > 1/2 Window (#)=Amounts differ by > 25% (m)=manual int.

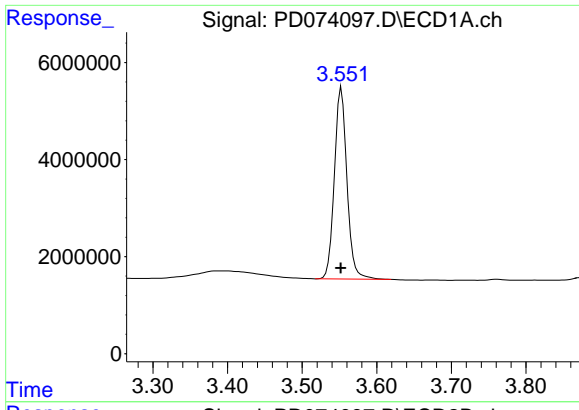
Data Path : Z:\pestpcbsrv\HPCHEM1\ECD_D\Data\PD030223\
 Data File : PD074097.D
 Signal(s) : Signal #1: ECD1A.ch Signal #2: ECD2B.ch
 Acq On : 01 Mar 2023 18:23
 Operator : AR\AJ
 Sample : PB151103BL
 Misc :
 ALS Vial : 19 Sample Multiplier: 1

Instrument :
 ECD_D
 ClientSampleId :

Integration File signal 1: autoint1.e
 Integration File signal 2: autoint2.e
 Quant Time: Mar 01 20:42:35 2023
 Quant Method : Z:\pestpcbsrv\HPCHEM1\ECD_D\Method\PD030123.M
 Quant Title : GC Extractables
 QLast Update : Wed Mar 01 01:35:06 2023
 Response via : Initial Calibration
 Integrator: ChemStation

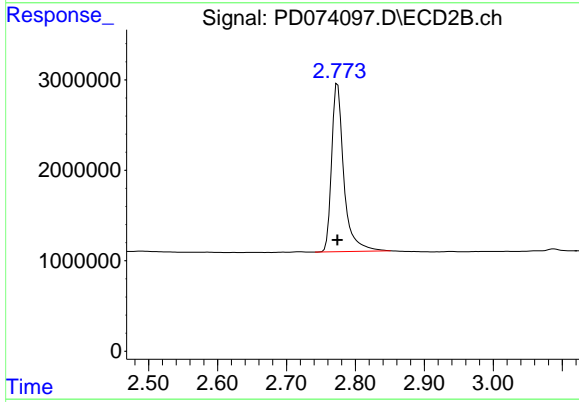
Volume Inj. : 2 µl
 Signal #1 Phase : ZB-MR1 Signal #2 Phase: ZB-MR2
 Signal #1 Info : 30M x 0.32mm x0.5 Signal #2 Info : 30M x 0.32mm x 0.25µm



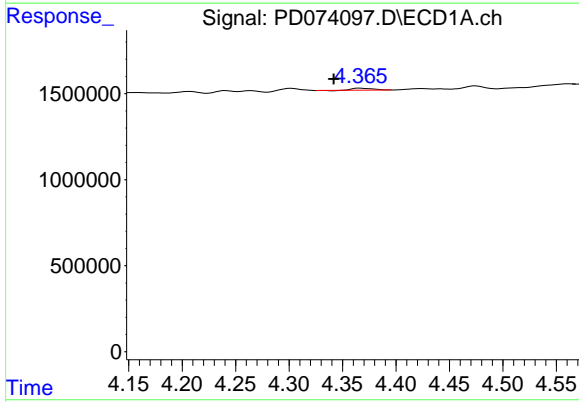


#1 Tetrachloro-m-xylene
 R.T.: 3.553 min
 Delta R.T.: 0.000 min
 Response: 46298778
 Conc: 20.21 ng/ml

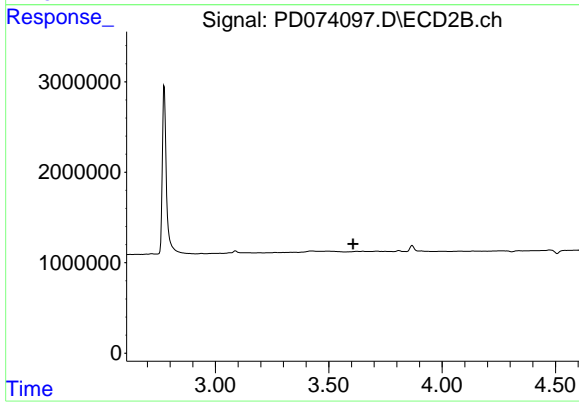
Instrument :
 ECD_D
 ClientSampleId :



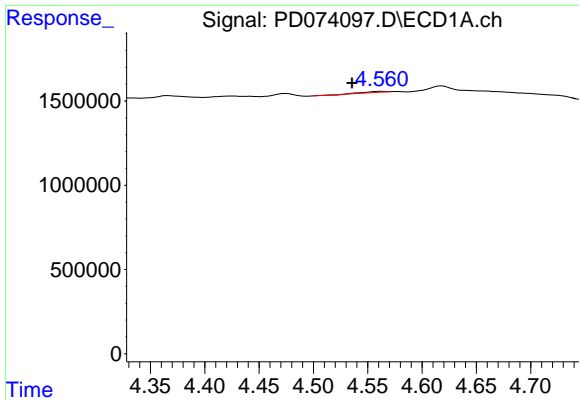
#1 Tetrachloro-m-xylene
 R.T.: 2.774 min
 Delta R.T.: 0.000 min
 Response: 22856689
 Conc: 19.30 ng/ml



#3 gamma-BHC (Lindane)
 R.T.: 4.366 min
 Delta R.T.: 0.025 min
 Response: 141922
 Conc: 0.04 ng/ml



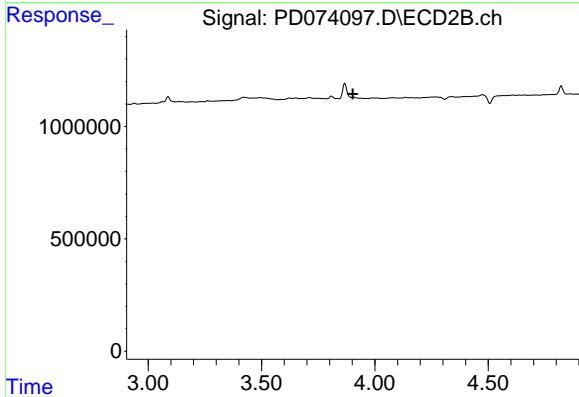
#3 gamma-BHC (Lindane)
 R.T.: 0.000 min
 Exp R.T. : 3.608 min
 Response: 0
 Conc: N.D.



#6 beta-BHC

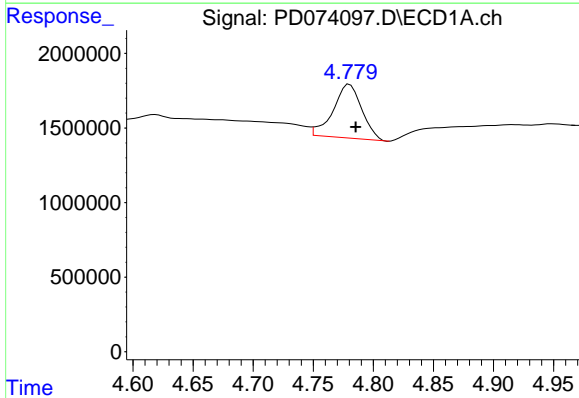
R.T.: 4.562 min
 Delta R.T.: 0.026 min
 Response: 62264
 Conc: 0.04 ng/ml

Instrument :
 ECD_D
 ClientSampleId :



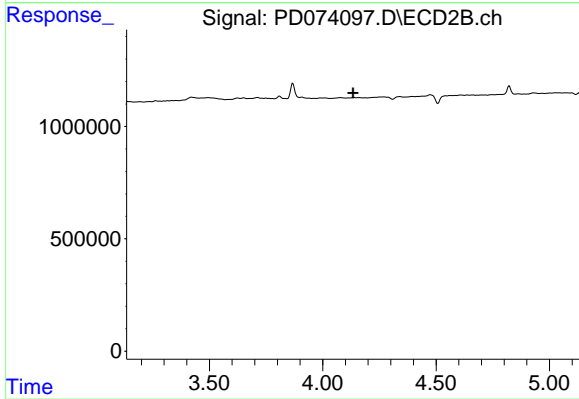
#6 beta-BHC

R.T.: 0.000 min
 Exp R.T. : 3.903 min
 Response: 0
 Conc: N.D.



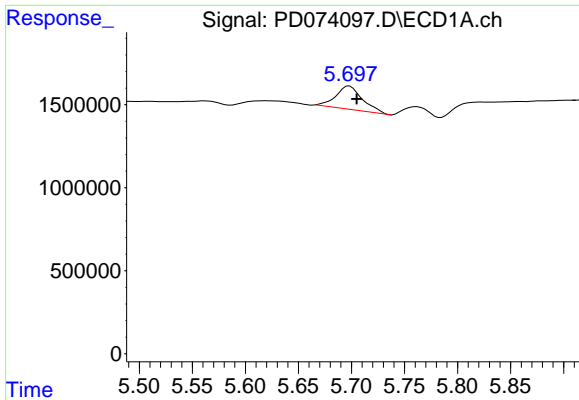
#7 delta-BHC

R.T.: 4.780 min
 Delta R.T.: -0.005 min
 Response: 6003072
 Conc: 2.14 ng/ml



#7 delta-BHC

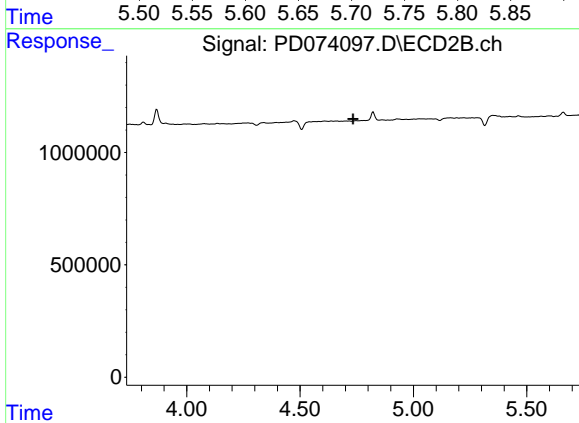
R.T.: 0.000 min
 Exp R.T. : 4.135 min
 Response: 0
 Conc: N.D.



#8 Heptachlor epoxide

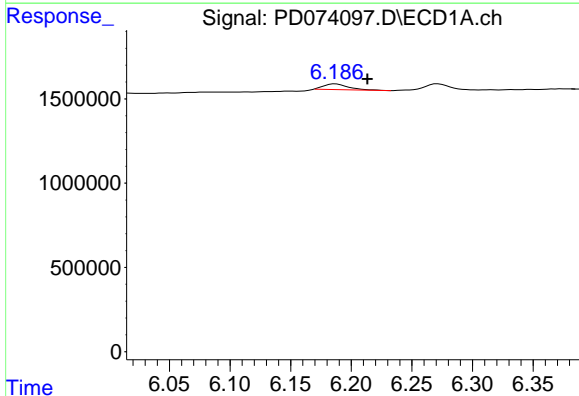
R.T.: 5.698 min
 Delta R.T.: -0.007 min
 Response: 2454678
 Conc: 0.86 ng/ml

Instrument :
 ECD_D
 ClientSampleId :



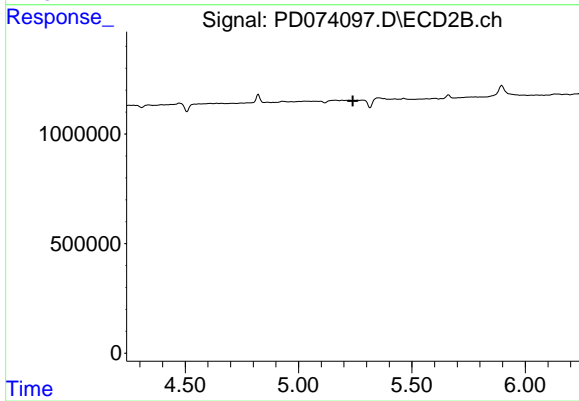
#8 Heptachlor epoxide

R.T.: 0.000 min
 Exp R.T. : 4.734 min
 Response: 0
 Conc: N.D.



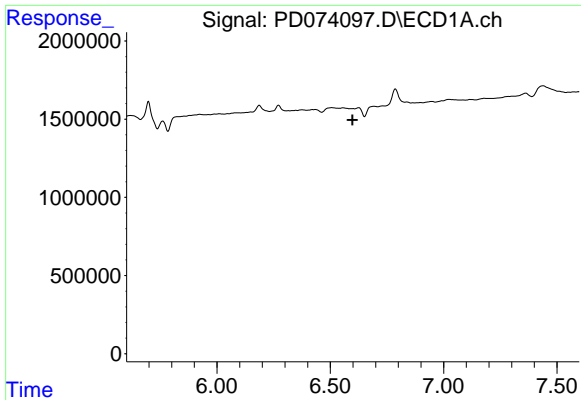
#12 4,4'-DDE

R.T.: 6.187 min
 Delta R.T.: -0.026 min
 Response: 483732
 Conc: 0.17 ng/ml



#12 4,4'-DDE

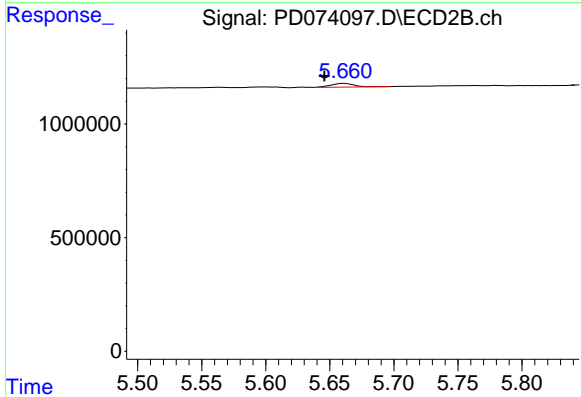
R.T.: 0.000 min
 Exp R.T. : 5.240 min
 Response: 0
 Conc: N.D.



#14 Endrin

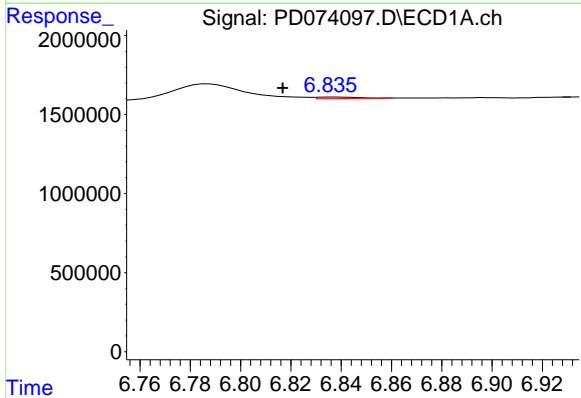
R.T.: 0.000 min
 Exp R.T.: 6.599 min
 Response: 0
 Conc: N.D.

Instrument :
 ECD_D
 ClientSampleId :



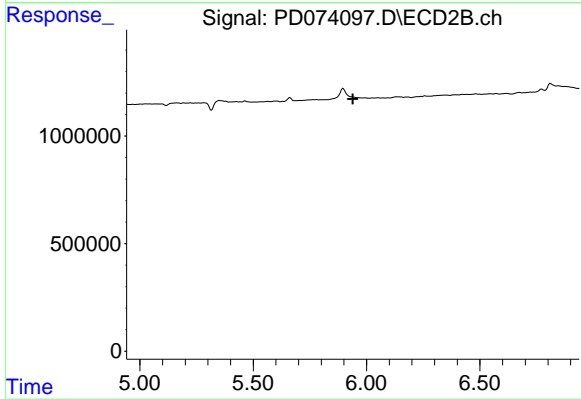
#14 Endrin

R.T.: 5.661 min
 Delta R.T.: 0.016 min
 Response: 207053
 Conc: 0.16 ng/ml



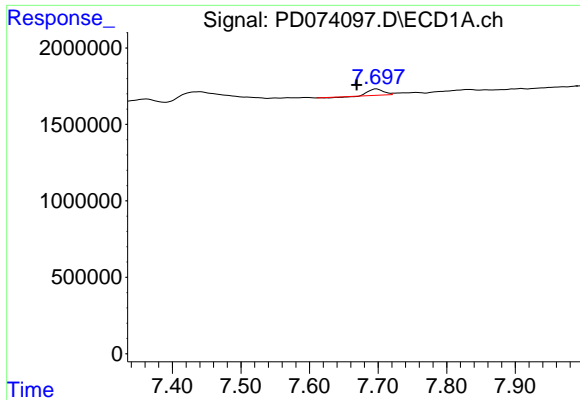
#15 Endosulfan II

R.T.: 6.837 min
 Delta R.T.: 0.021 min
 Response: 119652
 Conc: 0.04 ng/ml



#15 Endosulfan II

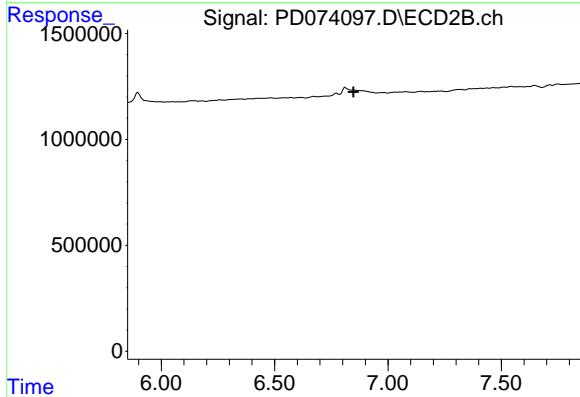
R.T.: 0.000 min
 Exp R.T.: 5.939 min
 Response: 0
 Conc: N.D.



#21 Endrin ketone

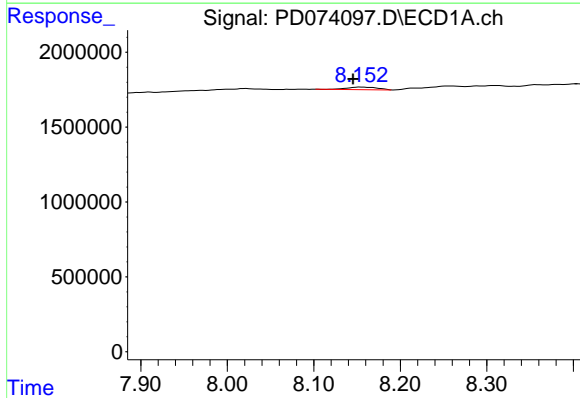
R.T.: 7.698 min
 Delta R.T.: 0.029 min
 Response: 595096
 Conc: 0.20 ng/ml

Instrument :
 ECD_D
 ClientSampleId :



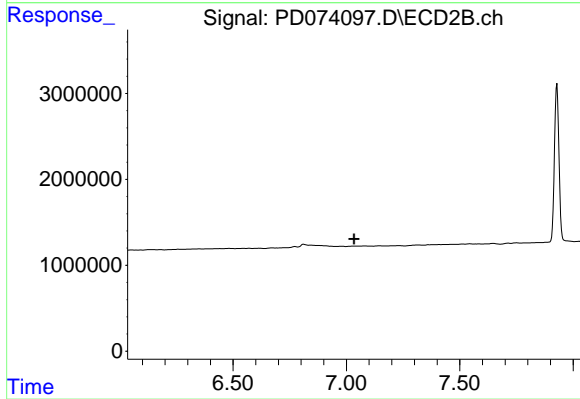
#21 Endrin ketone

R.T.: 0.000 min
 Exp R.T. : 6.848 min
 Response: 0
 Conc: N.D.



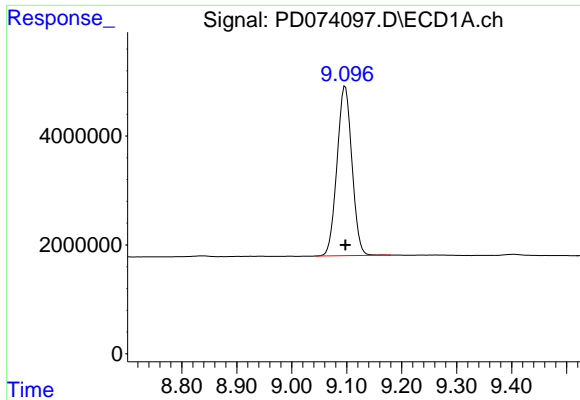
#22 Mirex

R.T.: 8.153 min
 Delta R.T.: 0.008 min
 Response: 420012
 Conc: 0.19 ng/ml



#22 Mirex

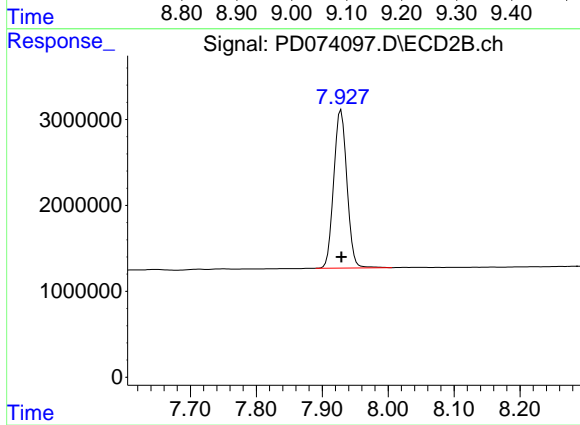
R.T.: 0.000 min
 Exp R.T. : 7.033 min
 Response: 0
 Conc: N.D.



#28 Decachlorobiphenyl

R.T.: 9.097 min
Delta R.T.: 0.000 min
Response: 58841000
Conc: 22.07 ng/ml

Instrument :
ECD_D
ClientSampleId :



#28 Decachlorobiphenyl

R.T.: 7.929 min
Delta R.T.: 0.000 min
Response: 25638688
Conc: 20.94 ng/ml