

Data Path : Z:\pestpcbsrv\HPCHEM1\ECD_D\Data\PD030421\
 Data File : PD061418.D
 Signal(s) : Signal #1: ECD1A.ch Signal #2: ECD2B.ch
 Acq On : 04 Mar 2021 17:04
 Operator : DD\AJ
 Sample : RESC52
 Misc :
 ALS Vial : 2 Sample Multiplier: 1

Instrument :
 ECD_D
 ClientSampleId :

Integration File signal 1: autoint1.e
 Integration File signal 2: autoint2.e
 Quant Time: Mar 05 05:56:32 2021
 Quant Method : Z:\pestpcbsrv\HPCHEM1\ECD_D\Method\PD030421CLP.M
 Quant Title : GC Extractables
 QLast Update : Fri Mar 05 05:53:14 2021
 Response via : Initial Calibration
 Integrator: ChemStation

Volume Inj. : 1 µl
 Signal #1 Phase : ZB-MR2 Signal #2 Phase: ZB-MR1
 Signal #1 Info : 30M x 0.32mm x0.2 Signal #2 Info : 30M x 0.32mm x 0.50µm

Compound	RT#1	RT#2	Resp#1	Resp#2	ng/ml	ng/ml

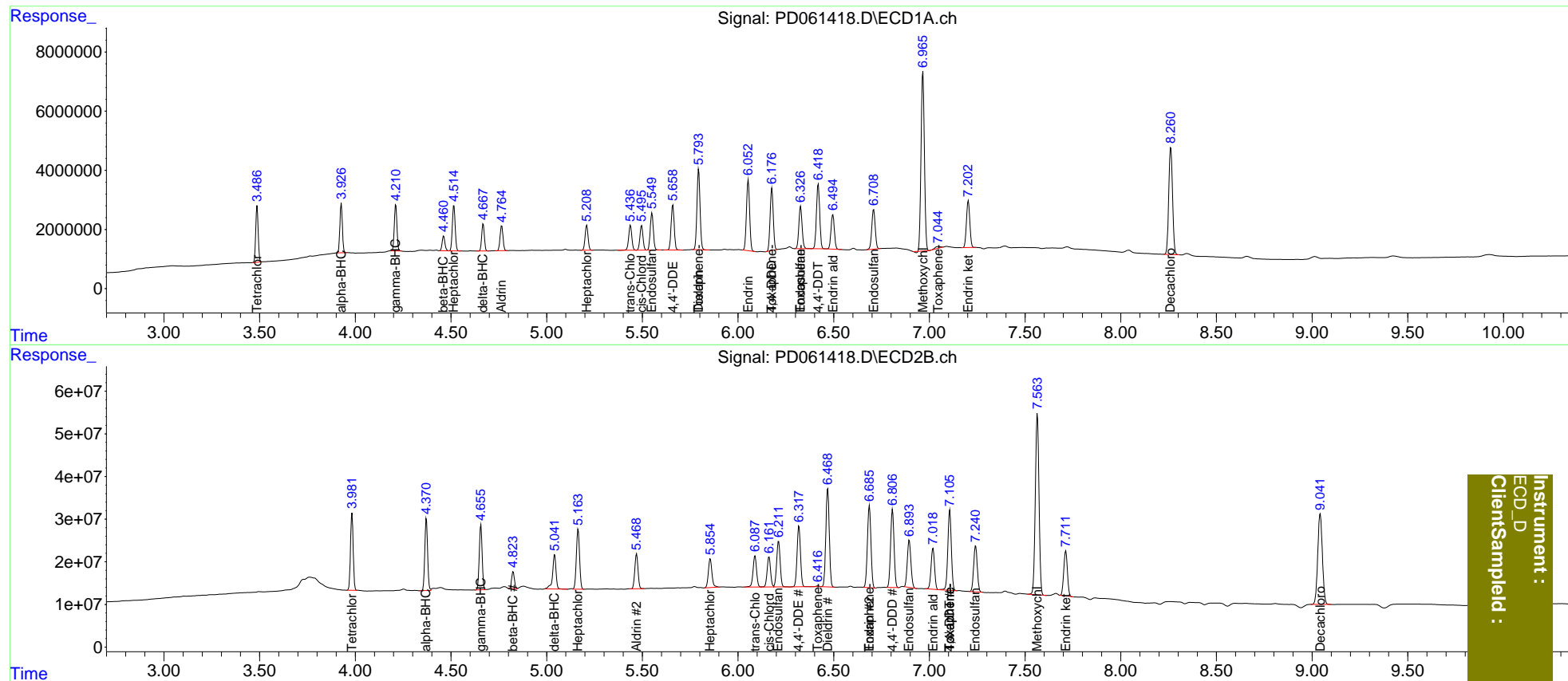
System Monitoring Compounds						
1) SA Tetrachlo...	3.487	3.983	17082577	176.8E6	18.803	18.927
27) SA Decachlor...	8.262	9.042	50295867	358.2E6	37.553	38.299
Target Compounds						
2) A alpha-BHC	3.927	4.371	15194836	171.7E6	11.558	11.877
3) MA gamma-BHC...	4.212	4.656	14999193	158.1E6	11.551	11.933
4) MA Heptachlor	4.515	5.165	15811068	164.0E6	11.737	12.038
5) MB Aldrin	4.765	5.470	8989237	95148520	6.968	7.176
6) B beta-BHC	4.462	4.825	5056231	39662908	7.651	7.041
7) B delta-BHC	4.668	5.042	8926661	101.3E6	6.732	7.213
8) B Heptachlo...	5.210	5.855	9030584	87697691	7.072	7.212
9) A Endosulfan I	5.550	6.212	14162990	137.6E6	11.769	12.082
10) B trans-Chl...	5.438	6.089	9574946	93668652	7.123	7.257
11) B cis-Chlor...	5.496	6.162	9174273	88503307	7.034	7.282
12) B 4,4'-DDE	5.659	6.318	17270667	177.3E6	13.749	14.540
13) MA Dieldrin	5.795	6.469	30486996	289.9E6	23.070	23.838
14) MA Endrin	6.053	6.687	27764058	247.2E6	24.004	24.318
15) B Endosulfa...	6.327	6.895	16822835	145.1E6	14.739	14.811
16) A 4,4'-DDD	6.177	6.807	23977856	229.6E6	23.049	23.809
17) MA 4,4'-DDT	6.419	7.107	25988418	239.5E6	23.409	24.601
18) B Endrin al...	6.496	7.019	14270586	122.7E6	14.675	14.498
19) B Endosulfa...	6.709	7.242	16806062	142.6E6	14.566	14.577
20) A Methoxychlor	6.966	7.565	73937463	569.1E6	121.236	124.841
21) B Endrin ke...	7.203	7.713	19485382	139.3E6	14.752	14.524
22) Toxaphene-1	5.795	6.418	30486996	1963462	3371.500	33.453 #
23) Toxaphene-2	0.000	6.687	0	247.2E6	N.D.	3395.486
24) Toxaphene-3	6.177	7.107	23977856	239.5E6	2214.690	2331.669
25) Toxaphene-4	6.327	7.107	16822835	239.5E6	720.450	849.018
26) Toxaphene-5	7.046	0.000	1170170	0	44.311	N.D. #

(f)=RT Delta > 1/2 Window (#)=Amounts differ by > 25% (m)=manual int.

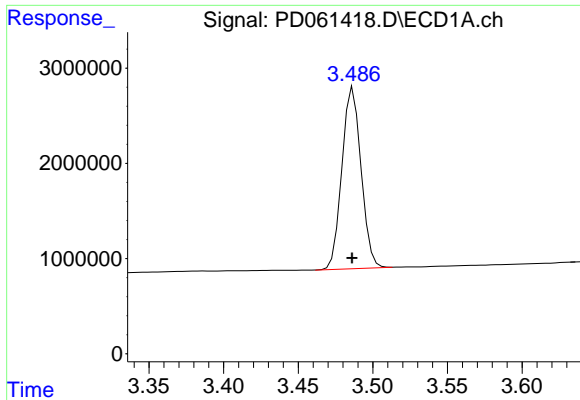
Data Path : Z:\pestpcbsrv\HPCHEM1\ECD_D\Data\PD030421\
 Data File : PD061418.D
 Signal(s) : Signal #1: ECD1A.ch Signal #2: ECD2B.ch
 Acq On : 04 Mar 2021 17:04
 Operator : DD\AJ
 Sample : RESC52
 Misc :
 ALS Vial : 2 Sample Multiplier: 1

Integration File signal 1: autoint1.e
 Integration File signal 2: autoint2.e
 Quant Time: Mar 05 05:56:32 2021
 Quant Method : Z:\pestpcbsrv\HPCHEM1\ECD_D\Method\PD030421CLP.M
 Quant Title : GC Extractables
 QLast Update : Fri Mar 05 05:53:14 2021
 Response via : Initial Calibration
 Integrator: ChemStation

Volume Inj. : 1 µl
 Signal #1 Phase : ZB-MR2 Signal #2 Phase: ZB-MR1
 Signal #1 Info : 30M x 0.32mm x0.2 Signal #2 Info : 30M x 0.32mm x 0.50µm



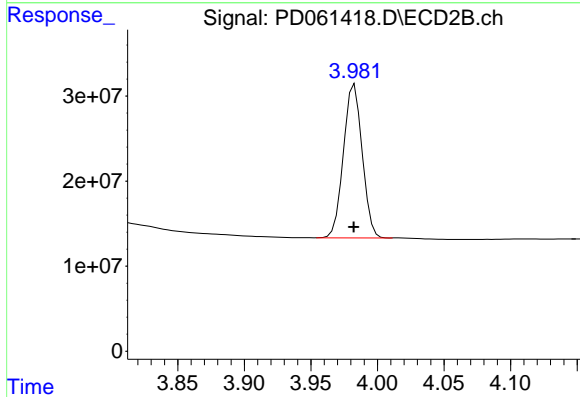
Instrument :
 ECD_D
 ClientSampleId :



#1 Tetrachloro-m-xylene

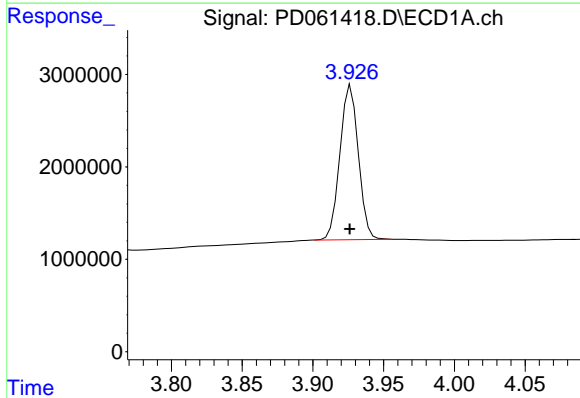
R.T.: 3.487 min
Delta R.T.: 0.000 min
Response: 17082577
Conc: 18.80 ng/ml

Instrument :
ECD_D
ClientSampleId :



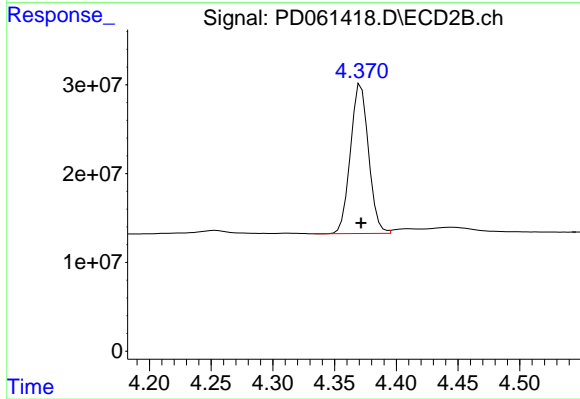
#1 Tetrachloro-m-xylene

R.T.: 3.983 min
Delta R.T.: 0.000 min
Response: 176790991
Conc: 18.93 ng/ml



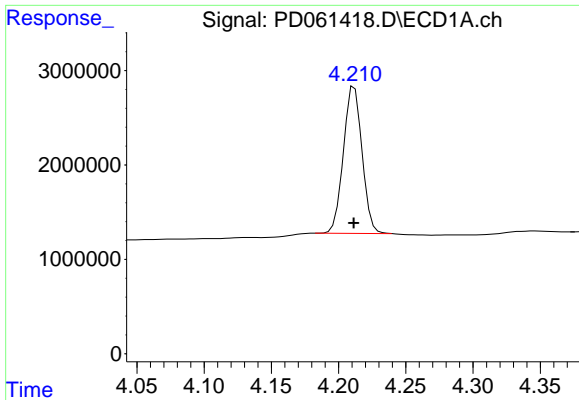
#2 alpha-BHC

R.T.: 3.927 min
Delta R.T.: 0.000 min
Response: 15194836
Conc: 11.56 ng/ml



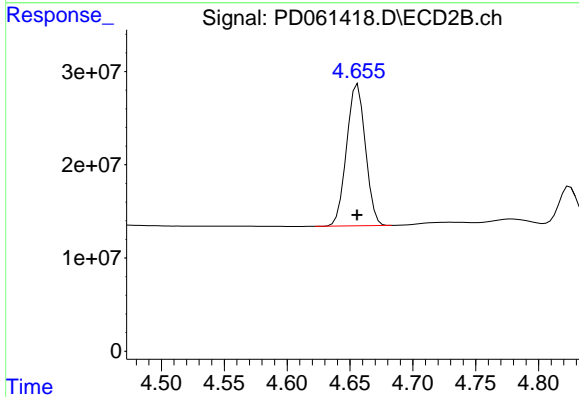
#2 alpha-BHC

R.T.: 4.371 min
Delta R.T.: 0.000 min
Response: 171722247
Conc: 11.88 ng/ml

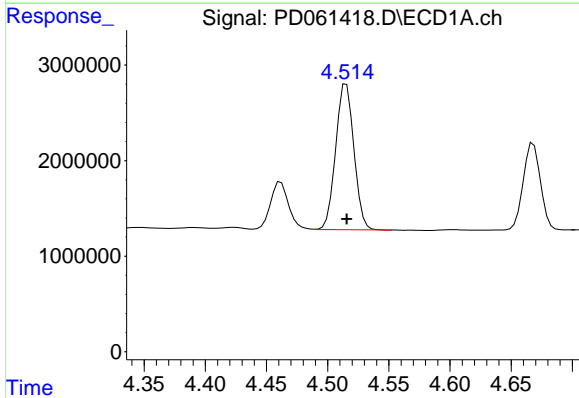


#3 gamma-BHC (Lindane)
 R.T.: 4.212 min
 Delta R.T.: 0.000 min
 Response: 14999193
 Conc: 11.55 ng/ml

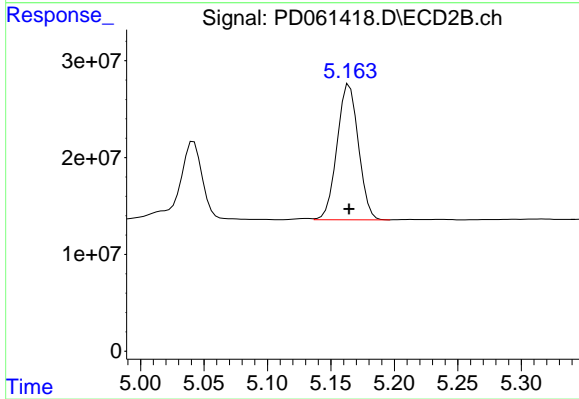
Instrument :
 ECD_D
 ClientSampleId :



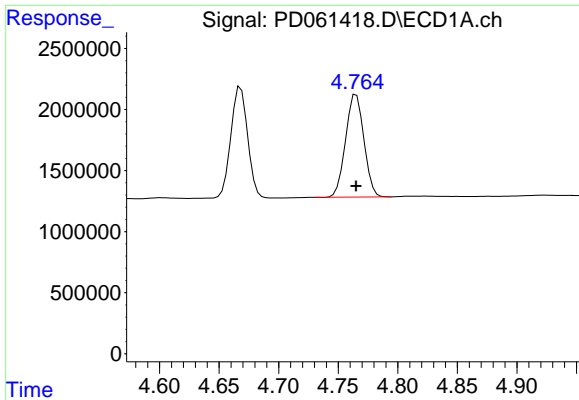
#3 gamma-BHC (Lindane)
 R.T.: 4.656 min
 Delta R.T.: 0.000 min
 Response: 158094500
 Conc: 11.93 ng/ml



#4 Heptachlor
 R.T.: 4.515 min
 Delta R.T.: 0.000 min
 Response: 15811068
 Conc: 11.74 ng/ml

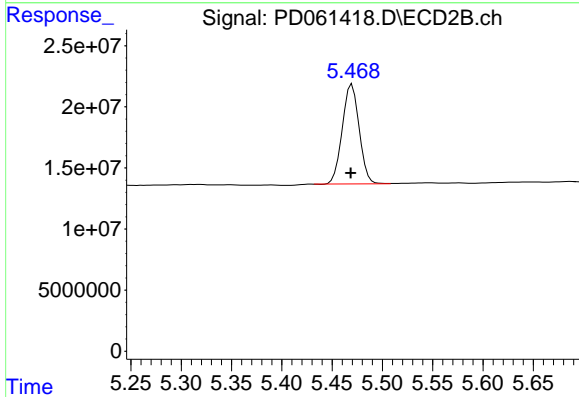


#4 Heptachlor
 R.T.: 5.165 min
 Delta R.T.: 0.000 min
 Response: 163977565
 Conc: 12.04 ng/ml

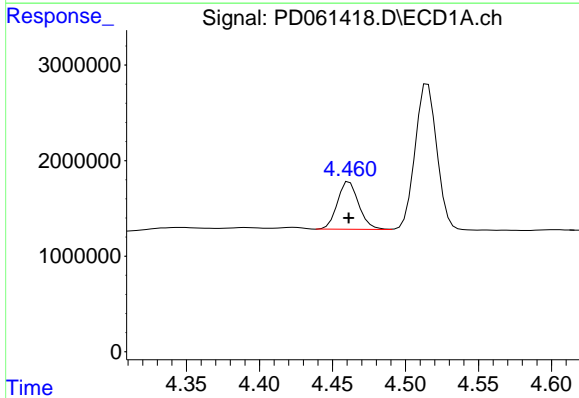


#5 Aldrin
 R.T.: 4.765 min
 Delta R.T.: 0.000 min
 Response: 8989237
 Conc: 6.97 ng/ml

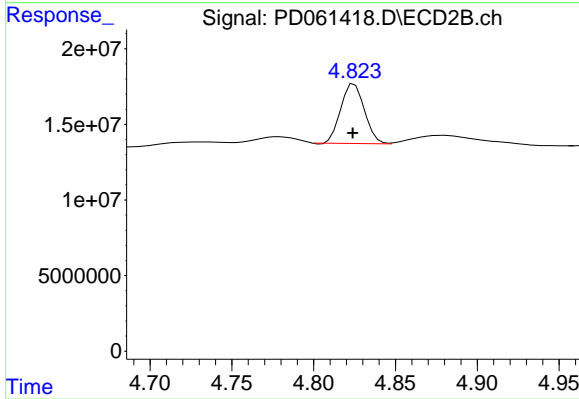
Instrument :
 ECD_D
 ClientSampleId :



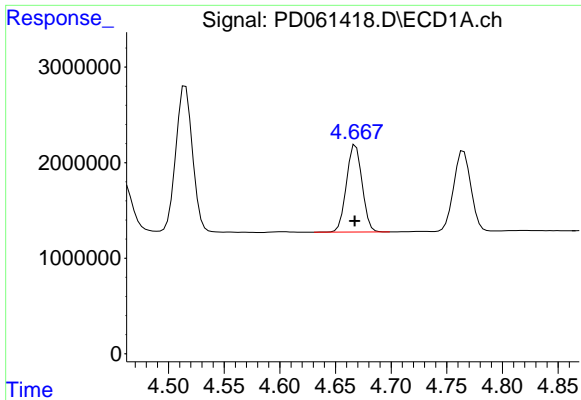
#5 Aldrin
 R.T.: 5.470 min
 Delta R.T.: 0.001 min
 Response: 95148520
 Conc: 7.18 ng/ml



#6 beta-BHC
 R.T.: 4.462 min
 Delta R.T.: 0.000 min
 Response: 5056231
 Conc: 7.65 ng/ml

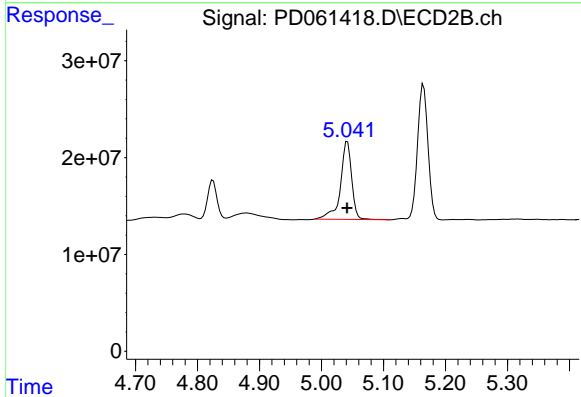


#6 beta-BHC
 R.T.: 4.825 min
 Delta R.T.: 0.000 min
 Response: 39662908
 Conc: 7.04 ng/ml

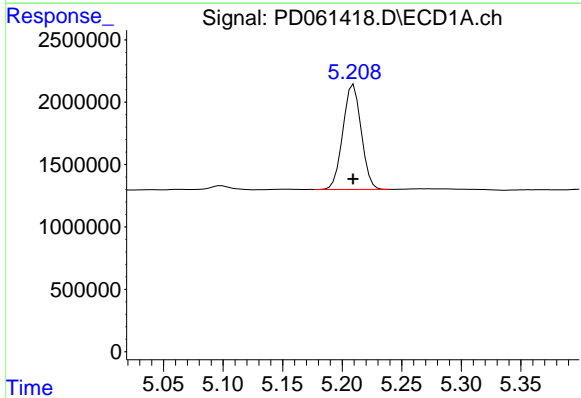


#7 delta-BHC
R.T.: 4.668 min
Delta R.T.: 0.000 min
Response: 8926661
Conc: 6.73 ng/ml

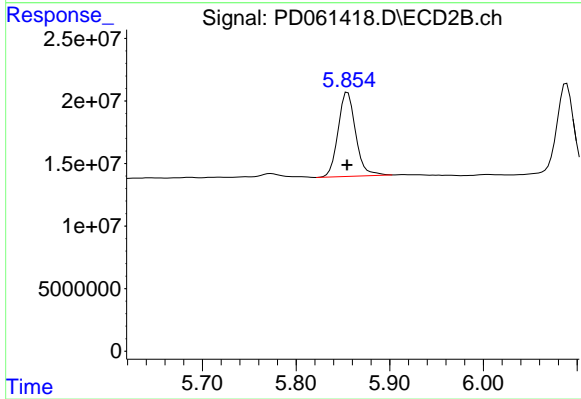
Instrument :
ECD_D
ClientSampled :



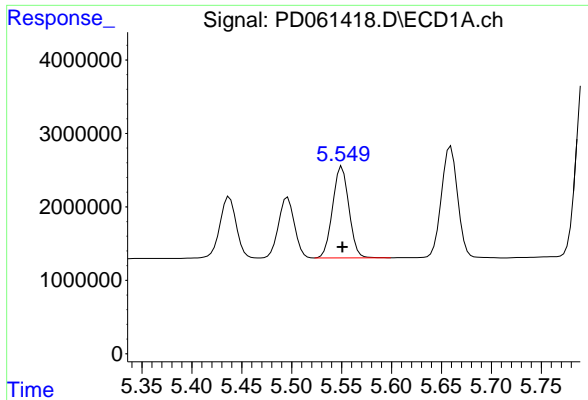
#7 delta-BHC
R.T.: 5.042 min
Delta R.T.: 0.000 min
Response: 101321195
Conc: 7.21 ng/ml



#8 Heptachlor epoxide
R.T.: 5.210 min
Delta R.T.: 0.000 min
Response: 9030584
Conc: 7.07 ng/ml

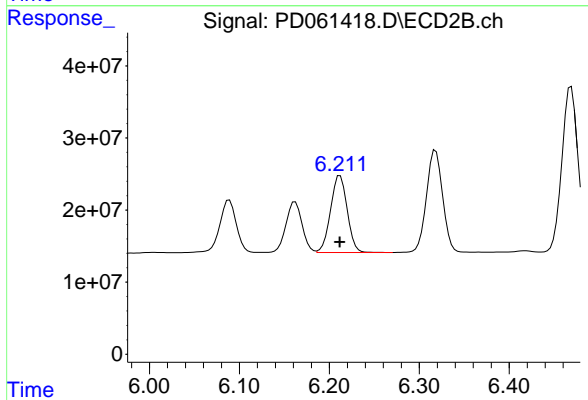


#8 Heptachlor epoxide
R.T.: 5.855 min
Delta R.T.: 0.000 min
Response: 87697691
Conc: 7.21 ng/ml

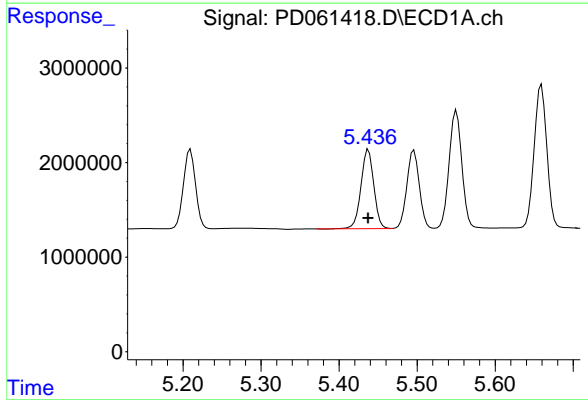


#9 Endosulfan I
 R.T.: 5.550 min
 Delta R.T.: 0.000 min
 Response: 14162990
 Conc: 11.77 ng/ml

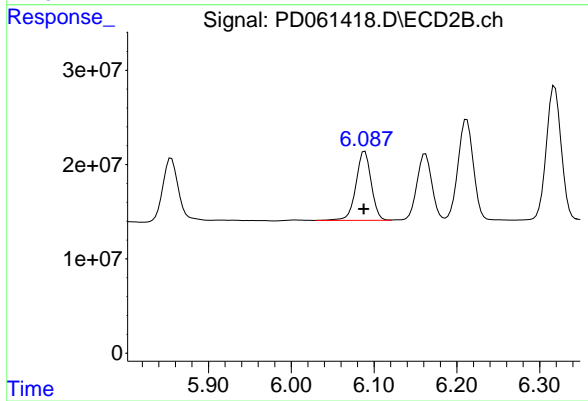
Instrument :
 ECD_D
 ClientSampled :



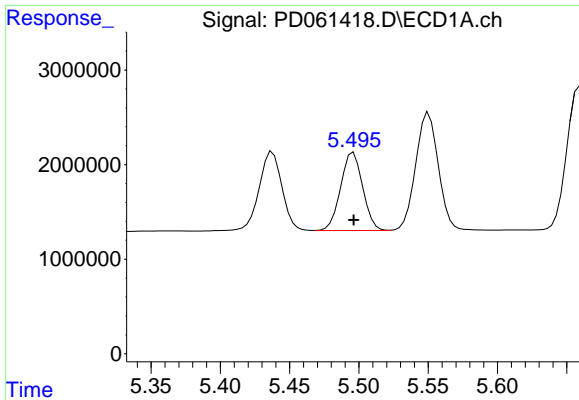
#9 Endosulfan I
 R.T.: 6.212 min
 Delta R.T.: 0.000 min
 Response: 137620386
 Conc: 12.08 ng/ml



#10 trans-Chlordane
 R.T.: 5.438 min
 Delta R.T.: 0.000 min
 Response: 9574946
 Conc: 7.12 ng/ml

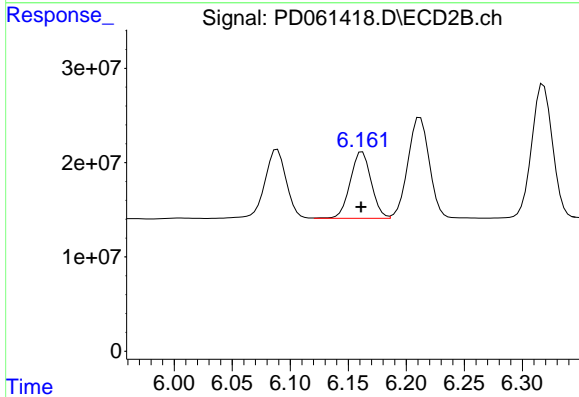


#10 trans-Chlordane
 R.T.: 6.089 min
 Delta R.T.: 0.001 min
 Response: 93668652
 Conc: 7.26 ng/ml

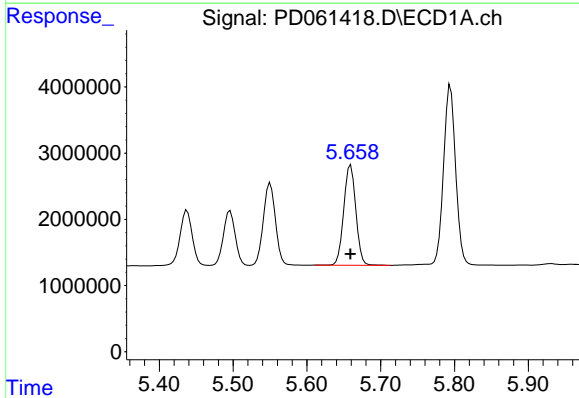


#11 cis-Chlordane
R.T.: 5.496 min
Delta R.T.: 0.000 min
Response: 9174273
Conc: 7.03 ng/ml

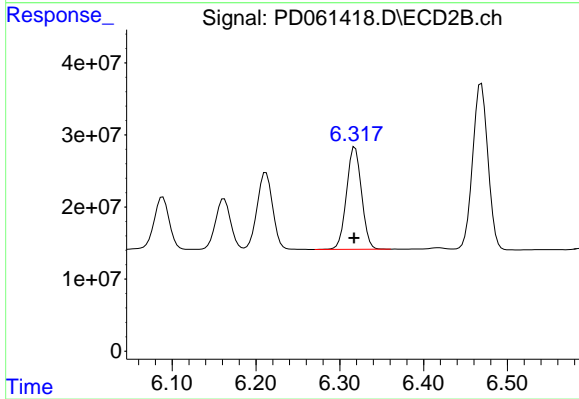
Instrument :
ECD_D
ClientSampleId :



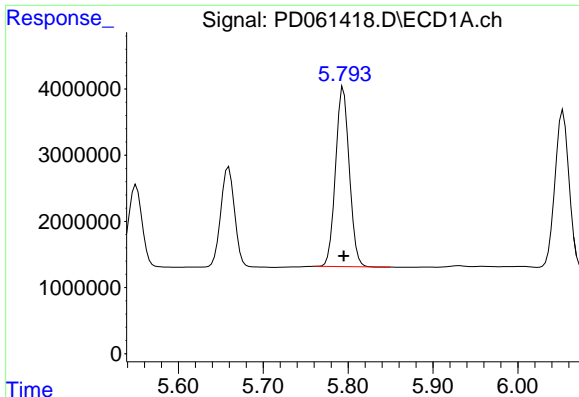
#11 cis-Chlordane
R.T.: 6.162 min
Delta R.T.: 0.001 min
Response: 88503307
Conc: 7.28 ng/ml



#12 4,4'-DDE
R.T.: 5.659 min
Delta R.T.: 0.000 min
Response: 17270667
Conc: 13.75 ng/ml



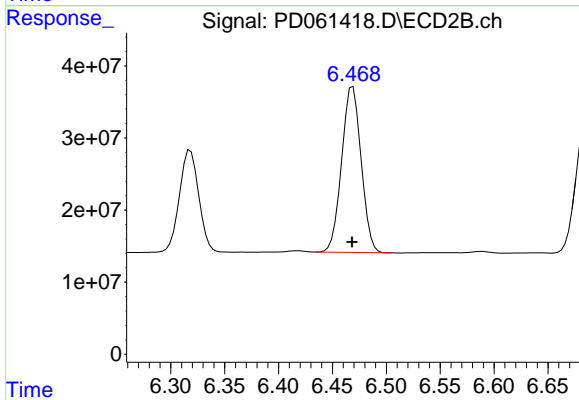
#12 4,4'-DDE
R.T.: 6.318 min
Delta R.T.: 0.000 min
Response: 177254271
Conc: 14.54 ng/ml



#13 Dieldrin

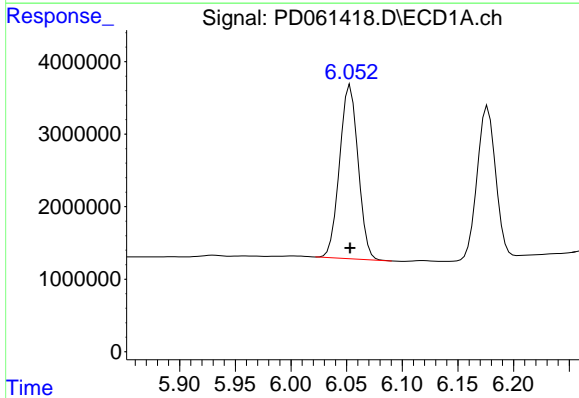
R.T.: 5.795 min
 Delta R.T.: 0.000 min
 Response: 30486996
 Conc: 23.07 ng/ml

Instrument :
 ECD_D
 ClientSampled :



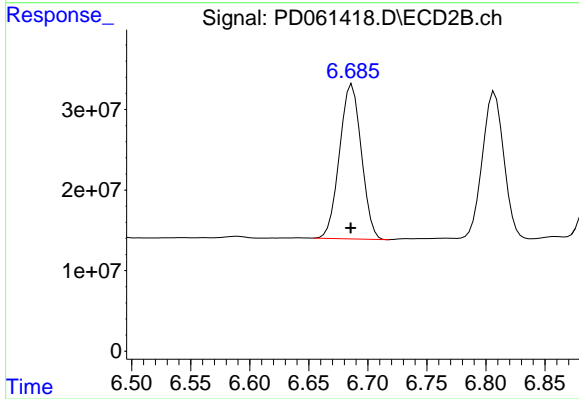
#13 Dieldrin

R.T.: 6.469 min
 Delta R.T.: 0.000 min
 Response: 289893679
 Conc: 23.84 ng/ml



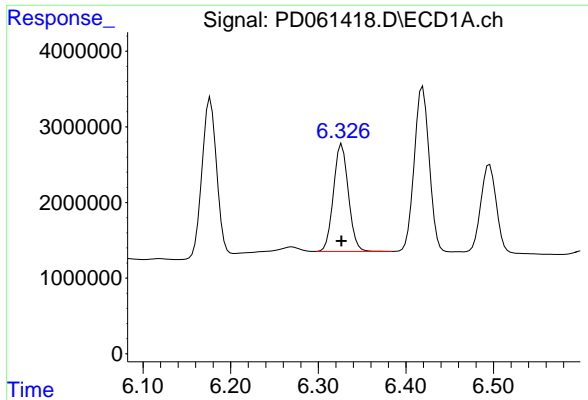
#14 Endrin

R.T.: 6.053 min
 Delta R.T.: 0.000 min
 Response: 27764058
 Conc: 24.00 ng/ml



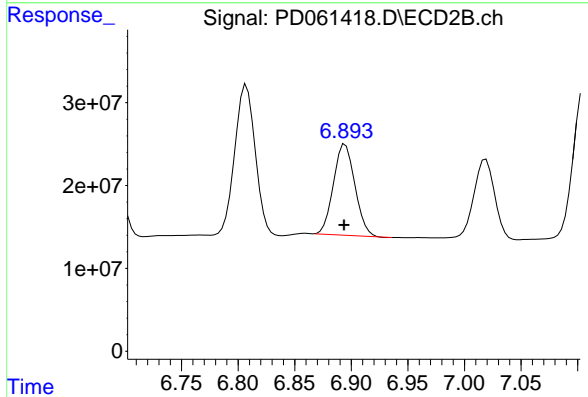
#14 Endrin

R.T.: 6.687 min
 Delta R.T.: 0.001 min
 Response: 247164021
 Conc: 24.32 ng/ml

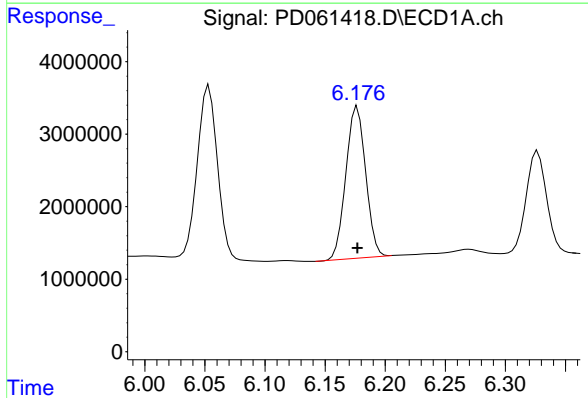


#15 Endosulfan II
R.T.: 6.327 min
Delta R.T.: 0.000 min
Response: 16822835
Conc: 14.74 ng/ml

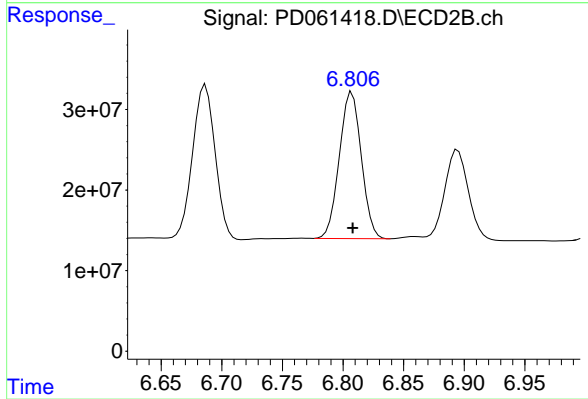
Instrument :
ECD_D
ClientSampled :



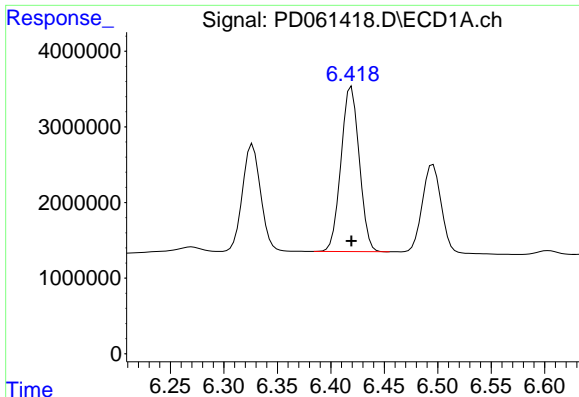
#15 Endosulfan II
R.T.: 6.895 min
Delta R.T.: 0.001 min
Response: 145110081
Conc: 14.81 ng/ml



#16 4,4'-DDD
R.T.: 6.177 min
Delta R.T.: 0.000 min
Response: 23977856
Conc: 23.05 ng/ml



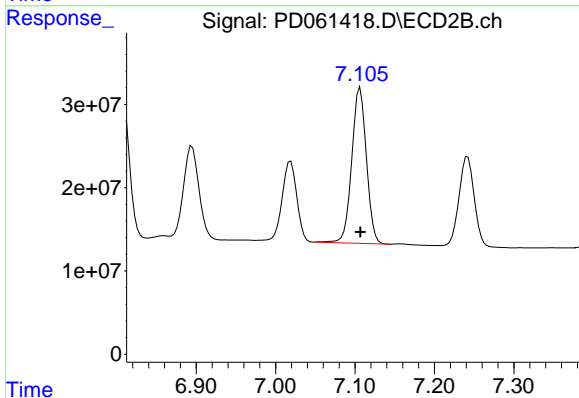
#16 4,4'-DDD
R.T.: 6.807 min
Delta R.T.: 0.000 min
Response: 229560109
Conc: 23.81 ng/ml



#17 4,4'-DDT

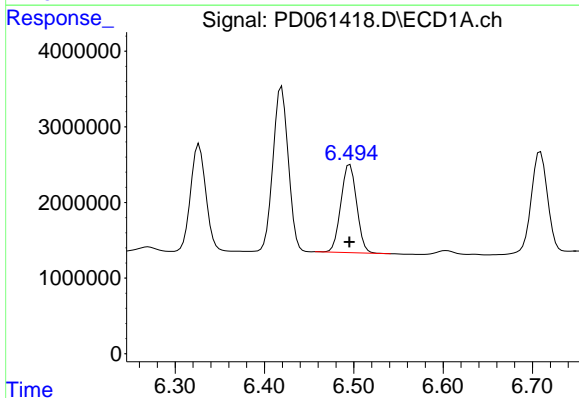
R.T.: 6.419 min
 Delta R.T.: 0.000 min
 Response: 25988418
 Conc: 23.41 ng/ml

Instrument :
 ECD_D
 ClientSampled :



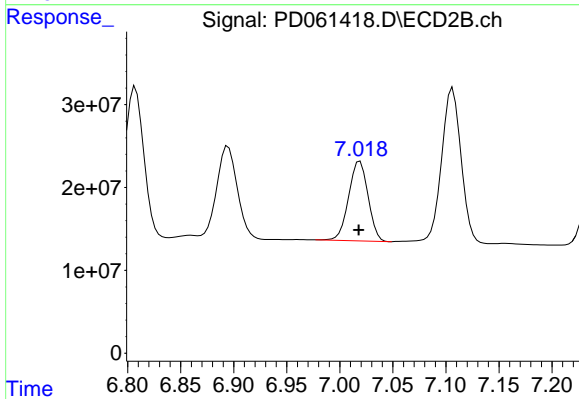
#17 4,4'-DDT

R.T.: 7.107 min
 Delta R.T.: 0.000 min
 Response: 239547864
 Conc: 24.60 ng/ml



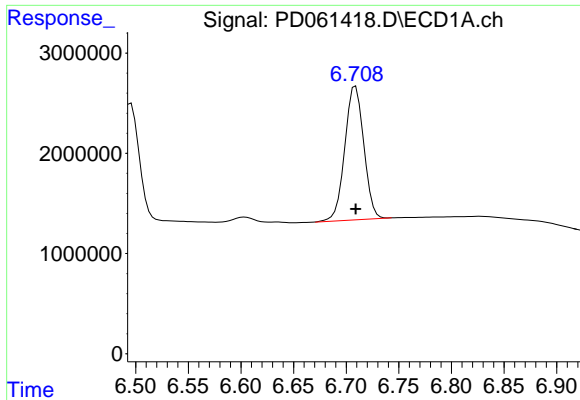
#18 Endrin aldehyde

R.T.: 6.496 min
 Delta R.T.: 0.000 min
 Response: 14270586
 Conc: 14.67 ng/ml



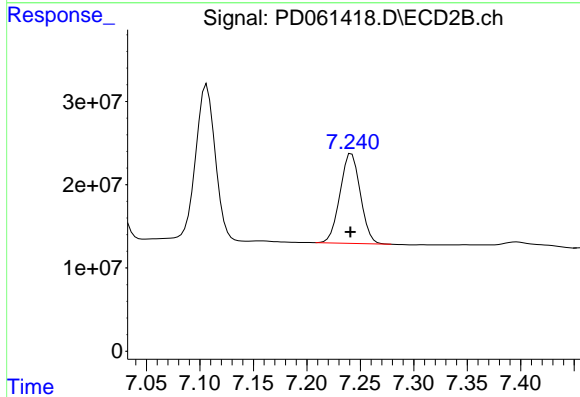
#18 Endrin aldehyde

R.T.: 7.019 min
 Delta R.T.: 0.001 min
 Response: 122671327
 Conc: 14.50 ng/ml

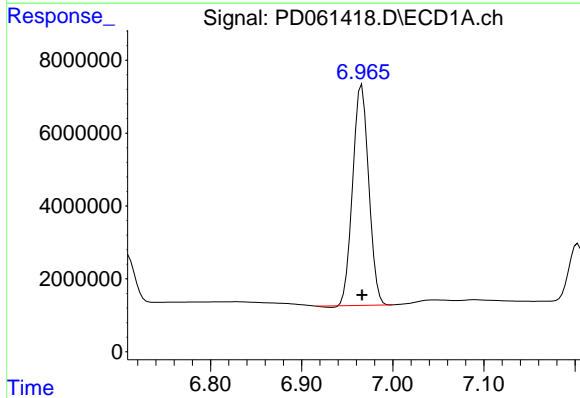


#19 Endosulfan Sulfate
 R.T.: 6.709 min
 Delta R.T.: 0.000 min
 Response: 16806062
 Conc: 14.57 ng/ml

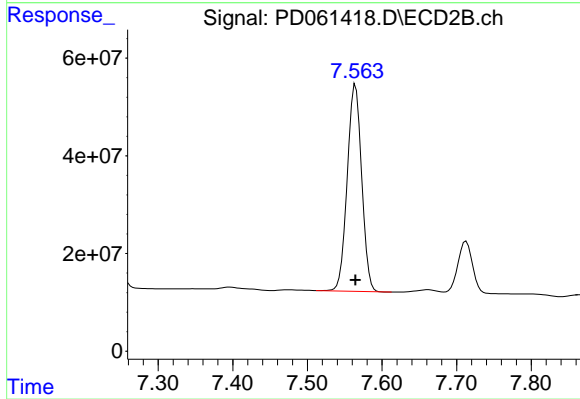
Instrument :
 ECD_D
 ClientSampleId :



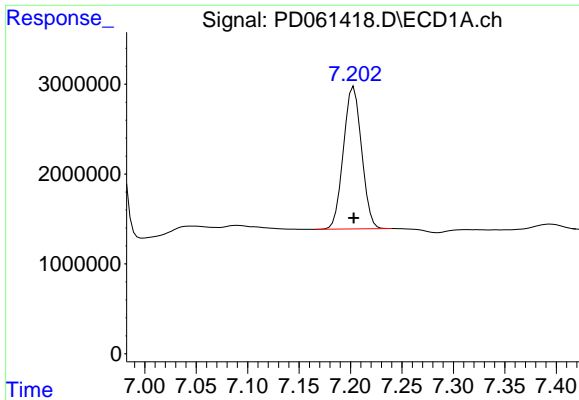
#19 Endosulfan Sulfate
 R.T.: 7.242 min
 Delta R.T.: 0.001 min
 Response: 142562948
 Conc: 14.58 ng/ml



#20 Methoxychlor
 R.T.: 6.966 min
 Delta R.T.: 0.000 min
 Response: 73937463
 Conc: 121.24 ng/ml

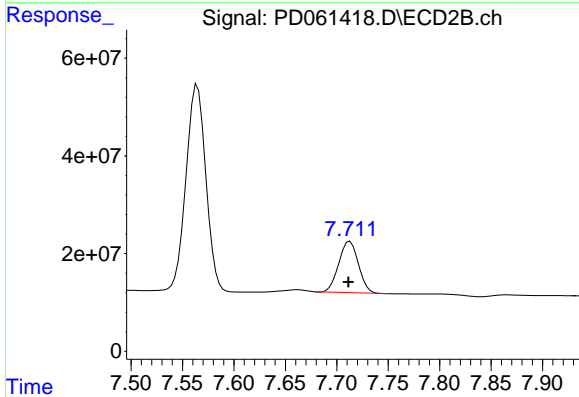


#20 Methoxychlor
 R.T.: 7.565 min
 Delta R.T.: 0.000 min
 Response: 569070132
 Conc: 124.84 ng/ml

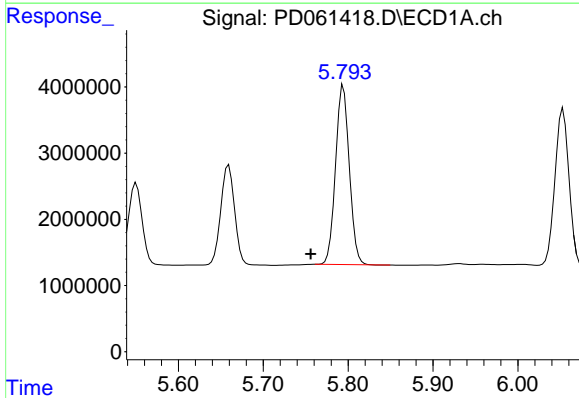


#21 Endrin ketone
 R.T.: 7.203 min
 Delta R.T.: 0.000 min
 Response: 19485382
 Conc: 14.75 ng/ml

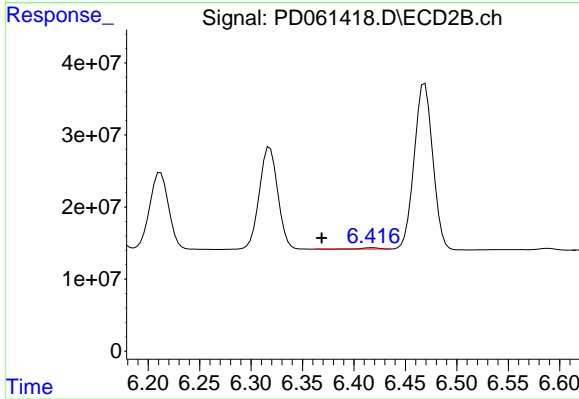
Instrument :
 ECD_D
 ClientSampleId :



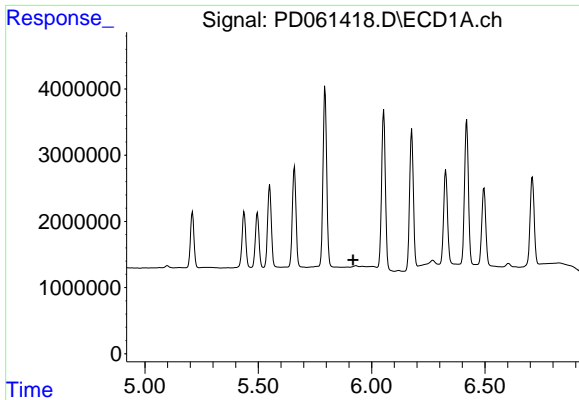
#21 Endrin ketone
 R.T.: 7.713 min
 Delta R.T.: 0.002 min
 Response: 139268763
 Conc: 14.52 ng/ml



#22 Toxaphene-1
 R.T.: 5.795 min
 Delta R.T.: 0.039 min
 Response: 30486996
 Conc: 3371.50 ng/ml



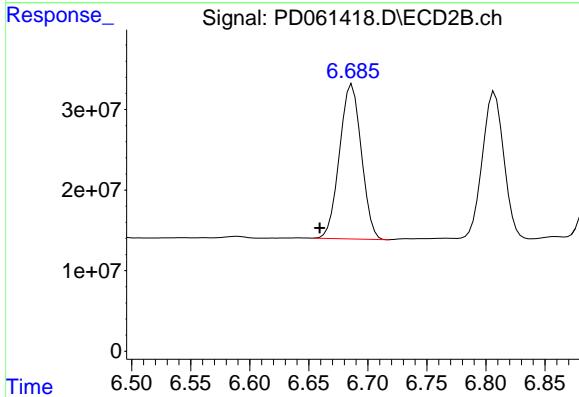
#22 Toxaphene-1
 R.T.: 6.418 min
 Delta R.T.: 0.049 min
 Response: 1963462
 Conc: 33.45 ng/ml



#23 Toxaphene-2

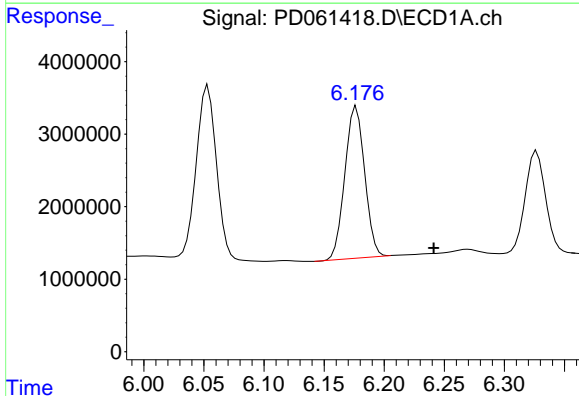
R.T.: 0.000 min
 Exp R.T.: 5.918 min
 Response: 0
 Conc: N.D.

Instrument :
 ECD_D
 ClientSampleId :



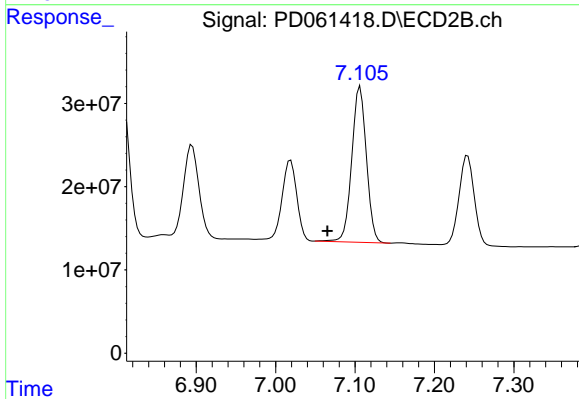
#23 Toxaphene-2

R.T.: 6.687 min
 Delta R.T.: 0.027 min
 Response: 247164021
 Conc: 3395.49 ng/ml



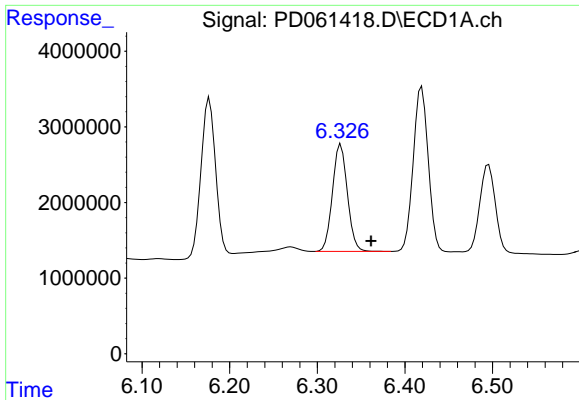
#24 Toxaphene-3

R.T.: 6.177 min
 Delta R.T.: -0.064 min
 Response: 23977856
 Conc: 2214.69 ng/ml



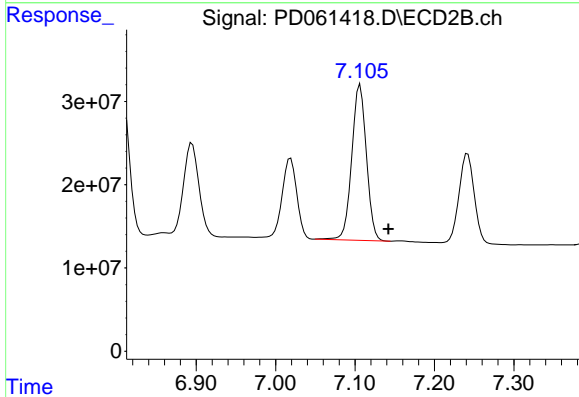
#24 Toxaphene-3

R.T.: 7.107 min
 Delta R.T.: 0.041 min
 Response: 239547864
 Conc: 2331.67 ng/ml

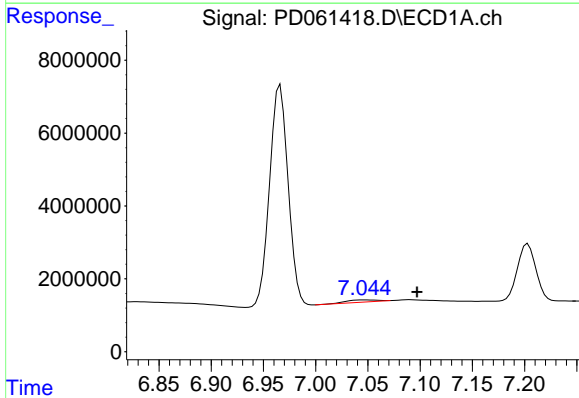


#25 Toxaphene-4
 R.T.: 6.327 min
 Delta R.T.: -0.034 min
 Response: 16822835
 Conc: 720.45 ng/ml

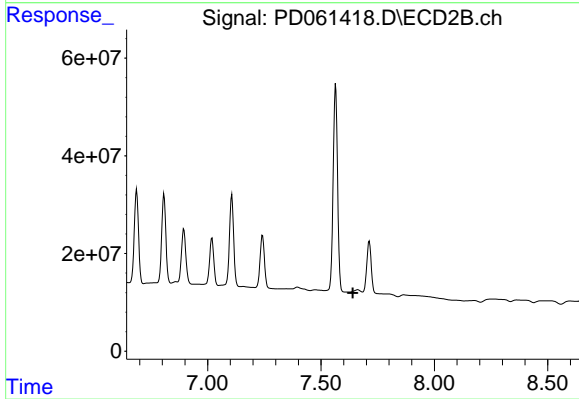
Instrument :
 ECD_D
 ClientSampled :



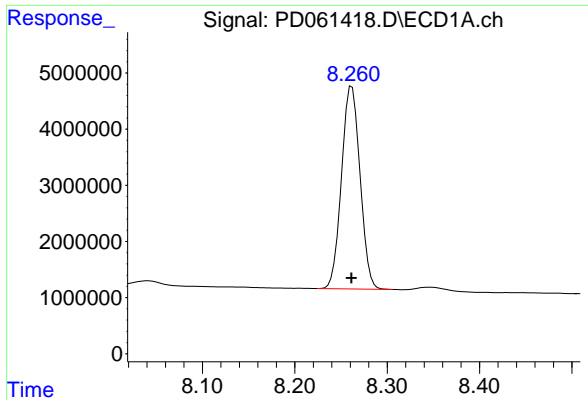
#25 Toxaphene-4
 R.T.: 7.107 min
 Delta R.T.: -0.036 min
 Response: 239547864
 Conc: 849.02 ng/ml



#26 Toxaphene-5
 R.T.: 7.046 min
 Delta R.T.: -0.051 min
 Response: 1170170
 Conc: 44.31 ng/ml



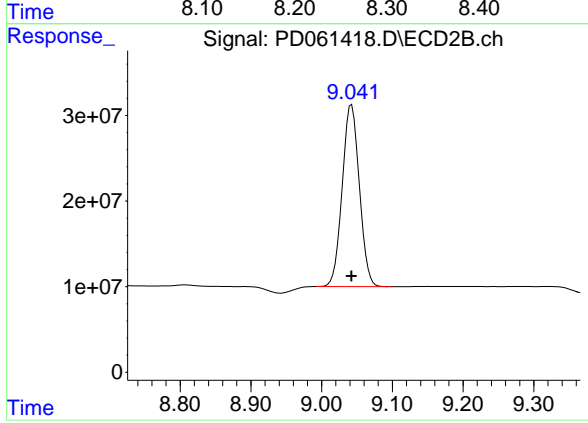
#26 Toxaphene-5
 R.T.: 0.000 min
 Exp R.T. : 7.641 min
 Response: 0
 Conc: N.D.



#27 Decachlorobiphenyl

R.T.: 8.262 min
Delta R.T.: 0.000 min
Response: 50295867
Conc: 37.55 ng/ml

Instrument :
ECD_D
ClientSampled :



#27 Decachlorobiphenyl

R.T.: 9.042 min
Delta R.T.: 0.000 min
Response: 358191758
Conc: 38.30 ng/ml