

Data Path : Z:\pestpcbsrv\HPCHEM1\ECD_D\Data\PD030421\
 Data File : PD061418.D
 Signal(s) : Signal #1: ECD1A.ch Signal #2: ECD2B.ch
 Acq On : 04 Mar 2021 17:04
 Operator : DD\AJ
 Sample : RESC52
 Misc :
 ALS Vial : 2 Sample Multiplier: 1

Instrument :
 ECD_D
 ClientSampleId :
 RESC52

Integration File signal 1: autoint1.e
 Integration File signal 2: autoint2.e
 Quant Time: Mar 05 05:56:32 2021
 Quant Method : Z:\pestpcbsrv\HPCHEM1\ECD_D\Method\PD030421CLP.M
 Quant Title : GC Extractables
 QLast Update : Fri Mar 05 05:53:14 2021
 Response via : Initial Calibration
 Integrator: ChemStation

Volume Inj. : 1 µl
 Signal #1 Phase : ZB-MR2 Signal #2 Phase: ZB-MR1
 Signal #1 Info : 30M x 0.32mm x0.2 Signal #2 Info : 30M x 0.32mm x 0.50µm

	Compound	RT#1	RT#2	Resp#1	Resp#2	ng/ml	ng/ml

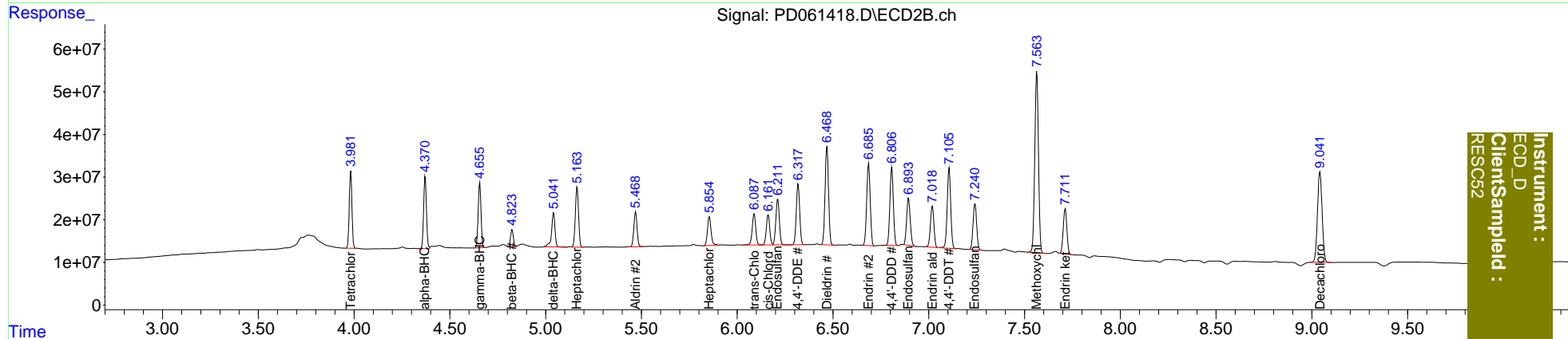
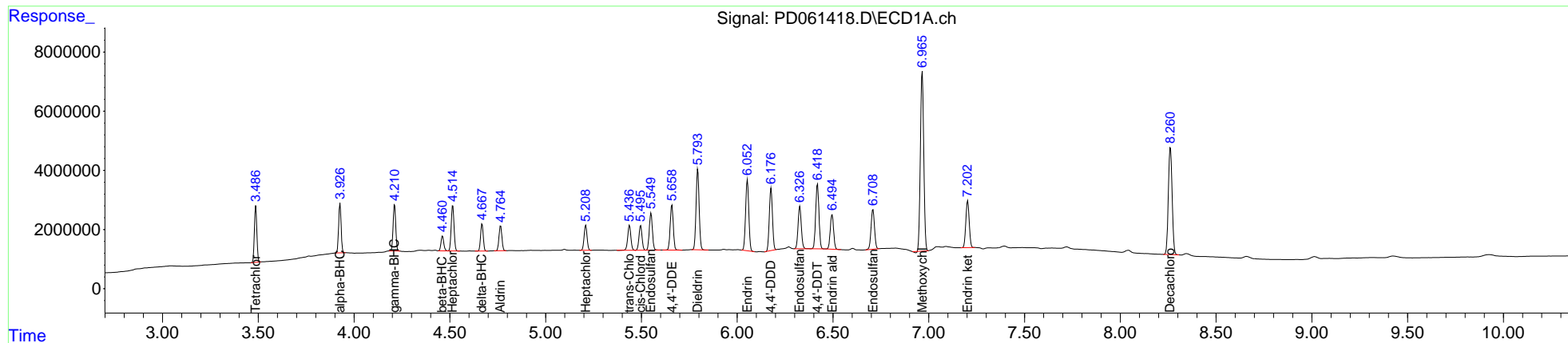
System Monitoring Compounds							
1)	SA Tetrachlo...	3.487	3.983	17082577	176.8E6	18.803	18.927
27)	SA Decachlor...	8.262	9.042	50295867	358.2E6	37.553	38.299
Target Compounds							
2)	A alpha-BHC	3.927	4.371	15194836	171.7E6	11.558	11.877
3)	MA gamma-BHC...	4.212	4.656	14999193	158.1E6	11.551	11.933
4)	MA Heptachlor	4.515	5.165	15811068	164.0E6	11.737	12.038
5)	MB Aldrin	4.765	5.470	8989237	95148520	6.968	7.176
6)	B beta-BHC	4.462	4.825	5056231	39662908	7.651	7.041
7)	B delta-BHC	4.668	5.042	8926661	101.3E6	6.732	7.213
8)	B Heptachlo...	5.210	5.855	9030584	87697691	7.072	7.212
9)	A Endosulfan I	5.550	6.212	14162990	137.6E6	11.769	12.082
10)	B trans-Chl...	5.438	6.089	9574946	93668652	7.123	7.257
11)	B cis-Chlor...	5.496	6.162	9174273	88503307	7.034	7.282
12)	B 4,4'-DDE	5.659	6.318	17270667	177.3E6	13.749	14.540
13)	MA Dieldrin	5.795	6.469	30486996	289.9E6	23.070	23.838
14)	MA Endrin	6.053	6.687	27764058	247.2E6	24.004	24.318
15)	B Endosulfa...	6.327	6.895	16822835	145.1E6	14.739	14.811
16)	A 4,4'-DDD	6.177	6.807	23977856	229.6E6	23.049	23.809
17)	MA 4,4'-DDT	6.419	7.107	25988418	239.5E6	23.409	24.601
18)	B Endrin al...	6.496	7.019	14270586	122.7E6	14.675	14.498
19)	B Endosulfa...	6.709	7.242	16806062	142.6E6	14.566	14.577
20)	A Methoxychlor	6.966	7.565	73937463	569.1E6	121.236	124.841
21)	B Endrin ke...	7.203	7.713	19485382	139.3E6	14.752	14.524

(f)=RT Delta > 1/2 Window (#)=Amounts differ by > 25% (m)=manual int.

Data Path : Z:\pestpcbsrv\HPCHEM1\ECD_D\Data\PD030421\
 Data File : PD061418.D
 Signal(s) : Signal #1: ECD1A.ch Signal #2: ECD2B.ch
 Acq On : 04 Mar 2021 17:04
 Operator : DD\AJ
 Sample : RESC52
 Misc :
 ALS Vial : 2 Sample Multiplier: 1

Integration File signal 1: autoint1.e
 Integration File signal 2: autoint2.e
 Quant Time: Mar 05 05:56:32 2021
 Quant Method : Z:\pestpcbsrv\HPCHEM1\ECD_D\Method\PD030421CLP.M
 Quant Title : GC Extractables
 QLast Update : Fri Mar 05 05:53:14 2021
 Response via : Initial Calibration
 Integrator: ChemStation

Volume Inj. : 1 µl
 Signal #1 Phase : ZB-MR2 Signal #2 Phase: ZB-MR1
 Signal #1 Info : 30M x 0.32mm x0.2 Signal #2 Info : 30M x 0.32mm x 0.50µm



Instrument :
 ECD_D
 ClientSampleId :
 RESC52

Data Path : Z:\pestpcbsrv\HPCHEM1\ECD_D\Data\PD030421\
 Data File : PD061418.D
 Acq On : 04 Mar 2021 17:04
 Operator : DD\AJ
 Sample : RESC52
 Misc :
 ALS Vial : 2 Sample Multiplier: 1

Instrument :
 ECD_D
 ClientSampleId :
 RESC52

Integration File signal 1: autoint1.e
 Integration File signal 2: autoint2.e

Method : Z:\pestpcbsrv\HPCHEM1\ECD_D\Method\PD030421CLP.M
 Title : GC Extractables
 Last Update : Fri Mar 05 05:53:14 2021
 Integrator: ChemStation

RT#1	RT#2	Resolution
3.487	3.927	100.00%
3.927	4.212	100.00%
4.212	4.462	100.00%
4.462	4.515	100.00%
4.515	4.668	100.00%
4.668	4.765	100.00%
4.765	5.210	100.00%
5.210	5.438	100.00%
5.438	5.496	100.00%
5.496	5.550	100.00%
5.550	5.659	100.00%
5.659	5.795	100.00%
5.795	6.053	100.00%
6.053	6.177	100.00%
6.177	6.327	100.00%
6.327	6.419	100.00%
6.419	6.496	100.00%
6.496	6.709	100.00%
6.709	6.966	100.00%
6.966	7.203	100.00%
7.203	8.262	100.00%

Signal #2

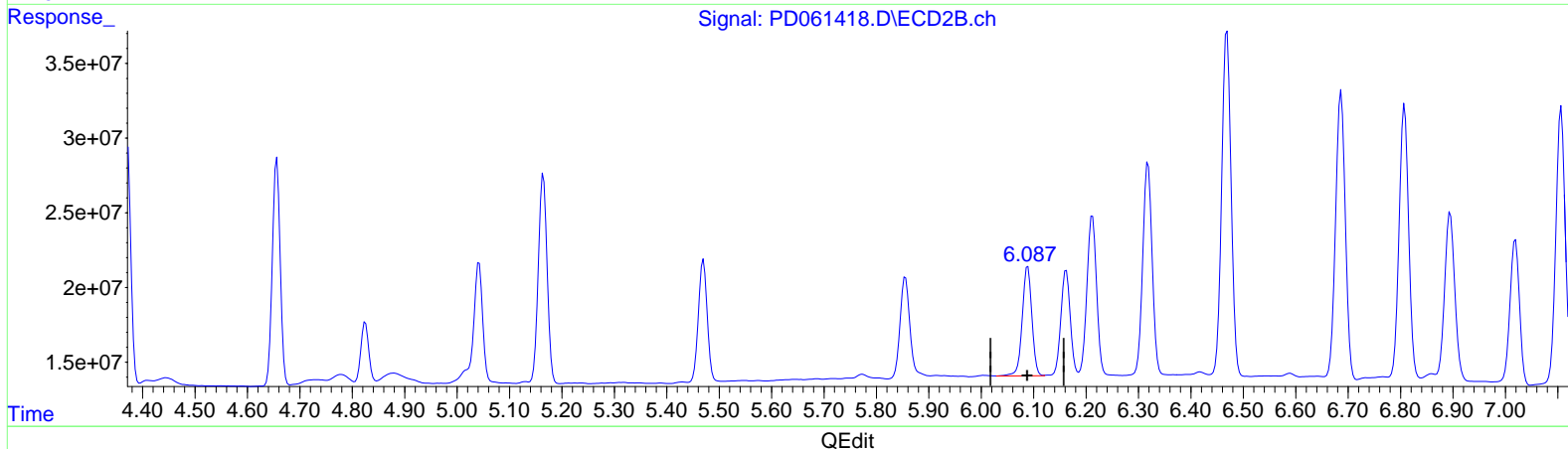
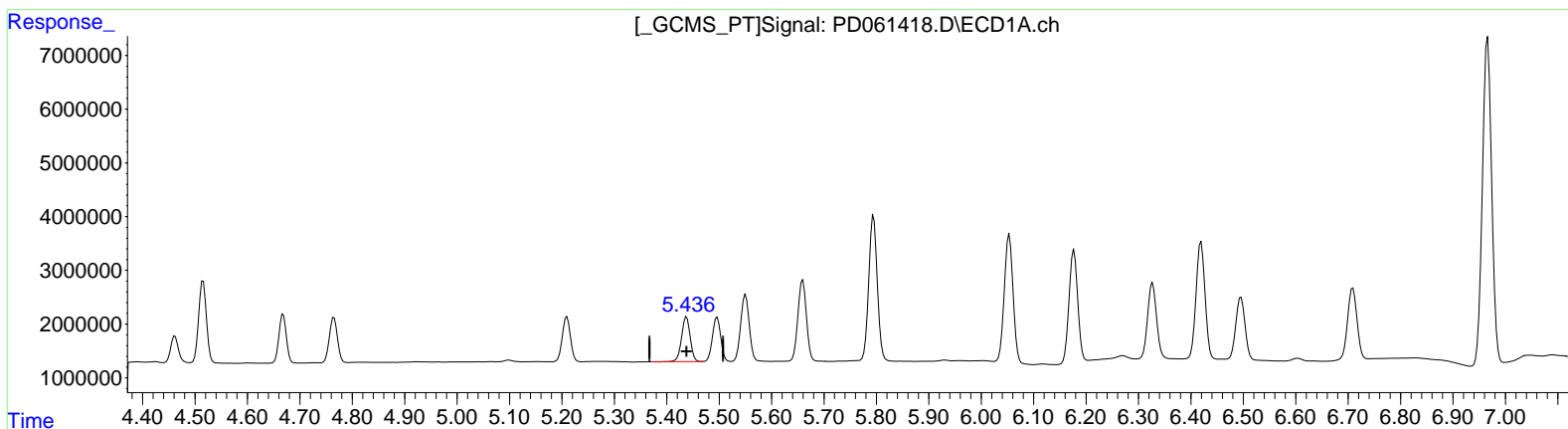
3.983	4.371	100.00%
4.371	4.656	100.00%
4.656	4.825	100.00%
4.825	5.042	100.00%
5.042	5.165	100.00%
5.165	5.470	100.00%
5.470	5.855	100.00%
5.855	6.089	100.00%
6.089	6.162	99.17%
6.162	6.212	96.49%
6.212	6.318	100.00%
6.318	6.469	100.00%
6.469	6.687	100.00%
6.687	6.807	100.00%
6.807	6.895	100.00%
6.895	7.019	100.00%
7.019	7.107	100.00%
7.107	7.242	100.00%
7.242	7.565	100.00%
7.565	7.713	100.00%
7.713	9.042	100.00%

Data Path : Z:\pestpcbsrv\HPCHEM1\ECD_D\Data\PD030421\
 Data File : PD061418.D
 Signal(s) : Signal #1: ECD1A.ch Signal #2: ECD2B.ch
 Acq On : 04 Mar 2021 17:04
 Operator : DD\AJ
 Sample : RESC52
 Misc :
 ALS Vial : 2 Sample Multiplier: 1

Instrument :
 ECD_D
 ClientSampleId :
 RESC52

Integration File signal 1: autoint1.e
 Integration File signal 2: autoint2.e
 Quant Time: Mar 05 05:56:32 2021
 Quant Method : Z:\pestpcbsrv\HPCHEM1\ECD_D\Method\PD030421CLP.M
 Quant Title : GC Extractables
 QLast Update : Fri Mar 05 05:53:14 2021
 Response via : Initial Calibration
 Integrator: ChemStation

Volume Inj. : 1 µl
 Signal #1 Phase : ZB-MR2 Signal #2 Phase: ZB-MR1
 Signal #1 Info : 30M x 0.32mm x 0.2 Signal #2 Info : 30M x 0.32mm x 0.50µm



(10) trans-Chlordane (B)
 5.438min 7.123 ng/ml
 response 9574946

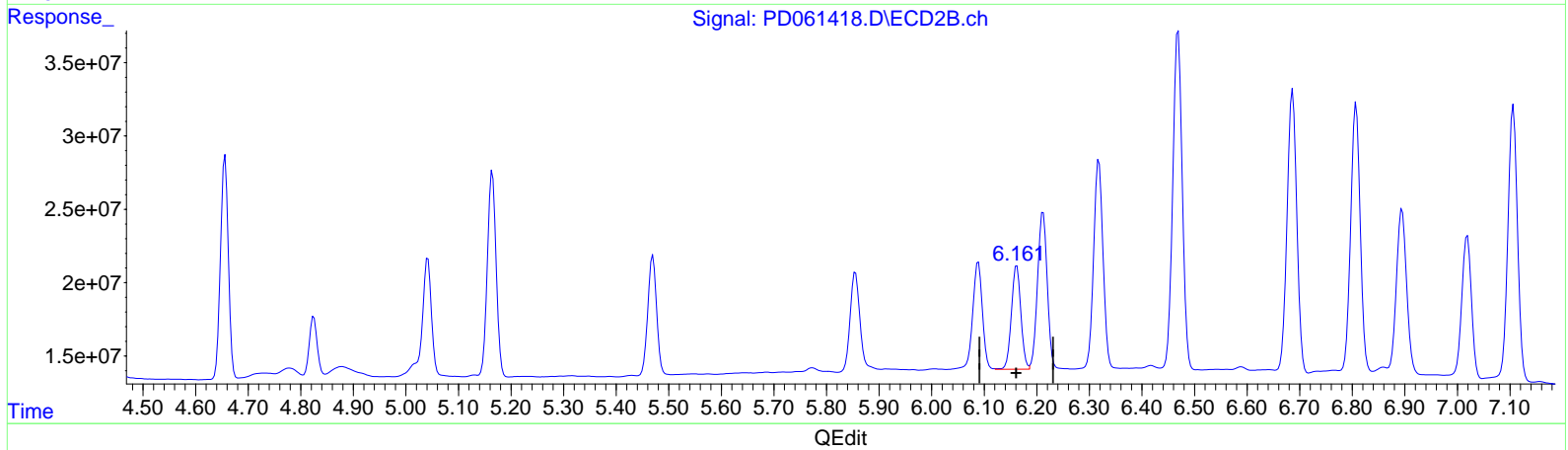
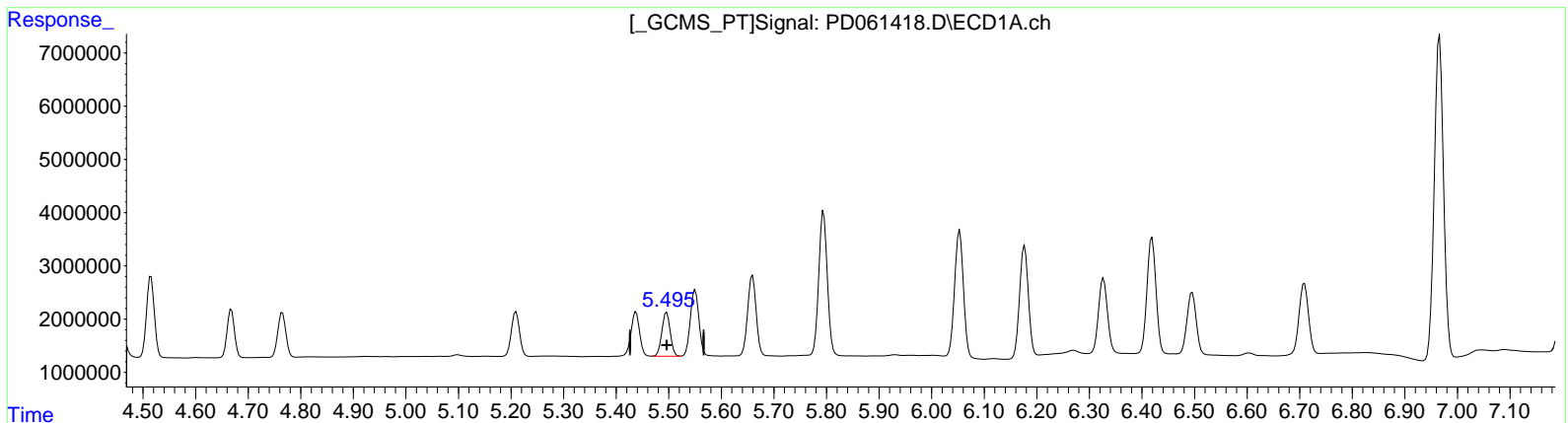
(10) trans-Chlordane #2 (B)
 6.089min 7.257 ng/ml
 response 93668652

Data Path : Z:\pestpcbsrv\HPCHEM1\ECD_D\Data\PD030421\
 Data File : PD061418.D
 Signal(s) : Signal #1: ECD1A.ch Signal #2: ECD2B.ch
 Acq On : 04 Mar 2021 17:04
 Operator : DD\AJ
 Sample : RESC52
 Misc :
 ALS Vial : 2 Sample Multiplier: 1

Instrument :
 ECD_D
 ClientSampled :
 RESC52

Integration File signal 1: autoint1.e
 Integration File signal 2: autoint2.e
 Quant Time: Mar 05 05:56:32 2021
 Quant Method : Z:\pestpcbsrv\HPCHEM1\ECD_D\Method\PD030421CLP.M
 Quant Title : GC Extractables
 QLast Update : Fri Mar 05 05:53:14 2021
 Response via : Initial Calibration
 Integrator: ChemStation

Volume Inj. : 1 µl
 Signal #1 Phase : ZB-MR2 Signal #2 Phase: ZB-MR1
 Signal #1 Info : 30M x 0.32mm x 0.2 Signal #2 Info : 30M x 0.32mm x 0.50µm



(11) cis-Chlordane (B)
 5.496min 7.034 ng/ml
 response 9174273

(11) cis-Chlordane #2 (B)
 6.162min 7.282 ng/ml
 response 88503307