

Data Path : Z:\pestpcbsrv\HPCHEM1\ECD_D\Data\PD030421\
Data File : PD061418.D
Acq On : 04 Mar 2021 17:04
Operator : DD\AJ
Sample : RESC52
Misc :
ALS Vial : 2 Sample Multiplier: 1

Integration File signal 1: autoint1.e
Integration File signal 2: autoint2.e

Method : Z:\pestpcbsrv\HPCHEM1\ECD_D\Method\PD030421CLP.M
Title : GC Extractables
Last Update : Fri Mar 05 05:53:14 2021
Integrator: ChemStation

RT#1	RT#2	Resolution
3.487	3.927	100.00%
3.927	4.212	100.00%
4.212	4.462	100.00%
4.462	4.515	100.00%
4.515	4.668	100.00%
4.668	4.765	100.00%
4.765	5.210	100.00%
5.210	5.438	100.00%
5.438	5.496	100.00%
5.496	5.550	100.00%
5.550	5.659	100.00%
5.659	5.795	100.00%
5.795	6.053	100.00%
6.053	6.177	100.00%
6.177	6.327	100.00%
6.327	6.419	100.00%
6.419	6.496	100.00%
6.496	6.709	100.00%
6.709	6.966	100.00%
6.966	7.203	100.00%
7.203	8.262	100.00%

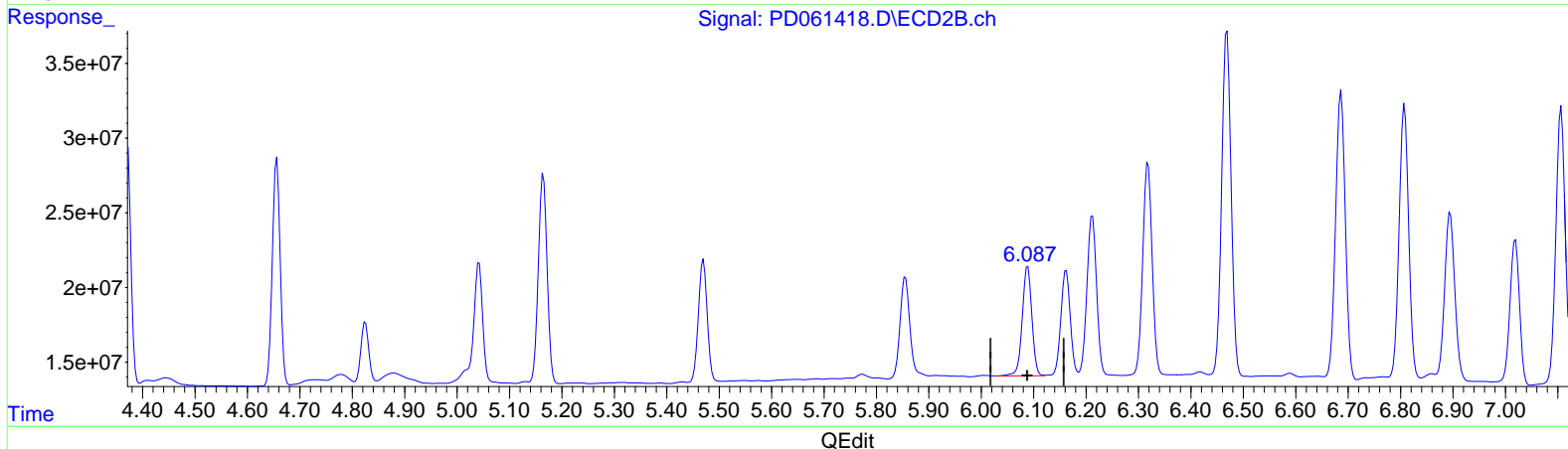
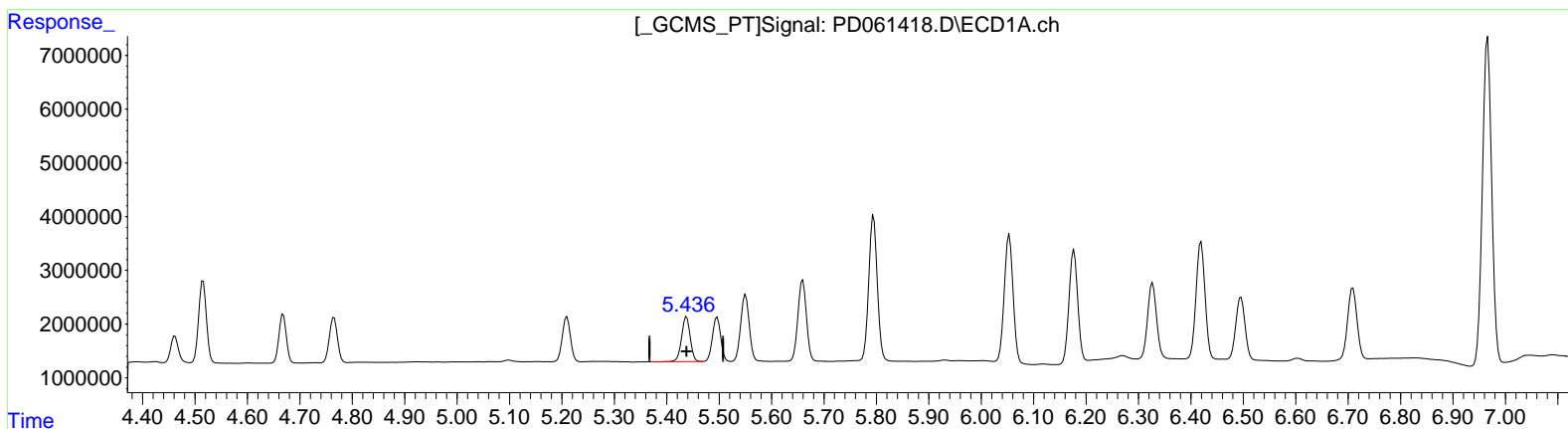
Signal #2

3.983	4.371	100.00%
4.371	4.656	100.00%
4.656	4.825	100.00%
4.825	5.042	100.00%
5.042	5.165	100.00%
5.165	5.470	100.00%
5.470	5.855	100.00%
5.855	6.089	100.00%
6.089	6.162	99.17%
6.162	6.212	96.49%
6.212	6.318	100.00%
6.318	6.469	100.00%
6.469	6.687	100.00%
6.687	6.807	100.00%
6.807	6.895	100.00%
6.895	7.019	100.00%
7.019	7.107	100.00%
7.107	7.242	100.00%
7.242	7.565	100.00%
7.565	7.713	100.00%
7.713	9.042	100.00%

Data Path : Z:\pestpcbsrv\HPCHEM1\ECD_D\Data\PD030421\
 Data File : PD061418.D
 Signal(s) : Signal #1: ECD1A.ch Signal #2: ECD2B.ch
 Acq On : 04 Mar 2021 17:04
 Operator : DD\AJ
 Sample : RESC52
 Misc :
 ALS Vial : 2 Sample Multiplier: 1

Integration File signal 1: autoint1.e
 Integration File signal 2: autoint2.e
 Quant Time: Mar 05 05:56:32 2021
 Quant Method : Z:\pestpcbsrv\HPCHEM1\ECD_D\Method\PD030421CLP.M
 Quant Title : GC Extractables
 QLast Update : Fri Mar 05 05:53:14 2021
 Response via : Initial Calibration
 Integrator: ChemStation

Volume Inj. : 1 µl
 Signal #1 Phase : ZB-MR2 Signal #2 Phase: ZB-MR1
 Signal #1 Info : 30M x 0.32mm x 0.2 Signal #2 Info : 30M x 0.32mm x 0.50µm



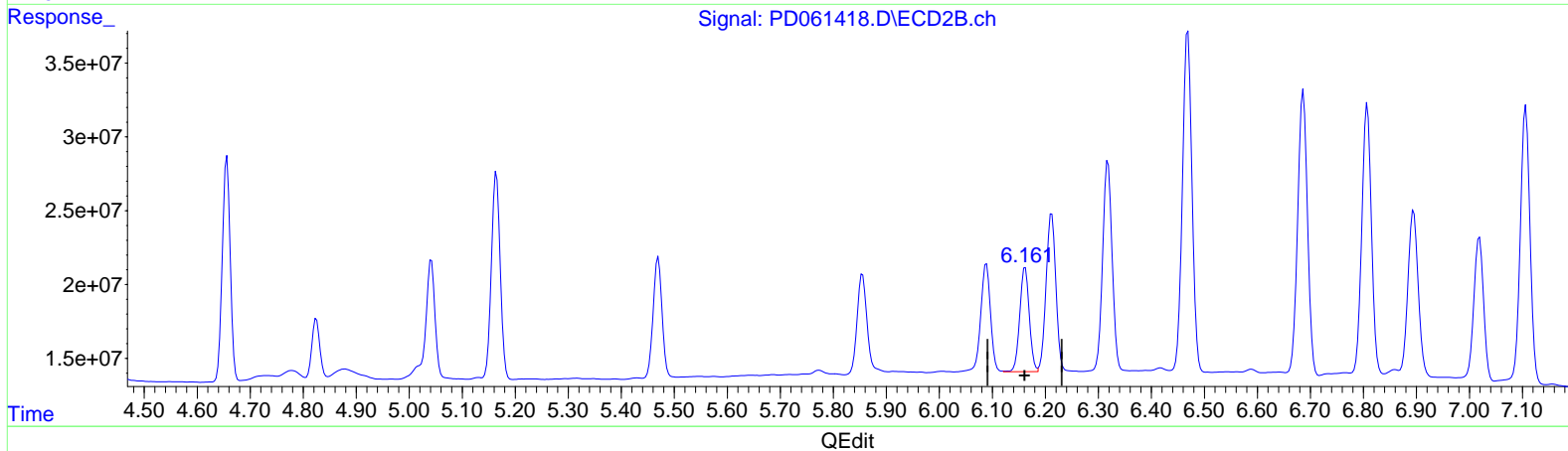
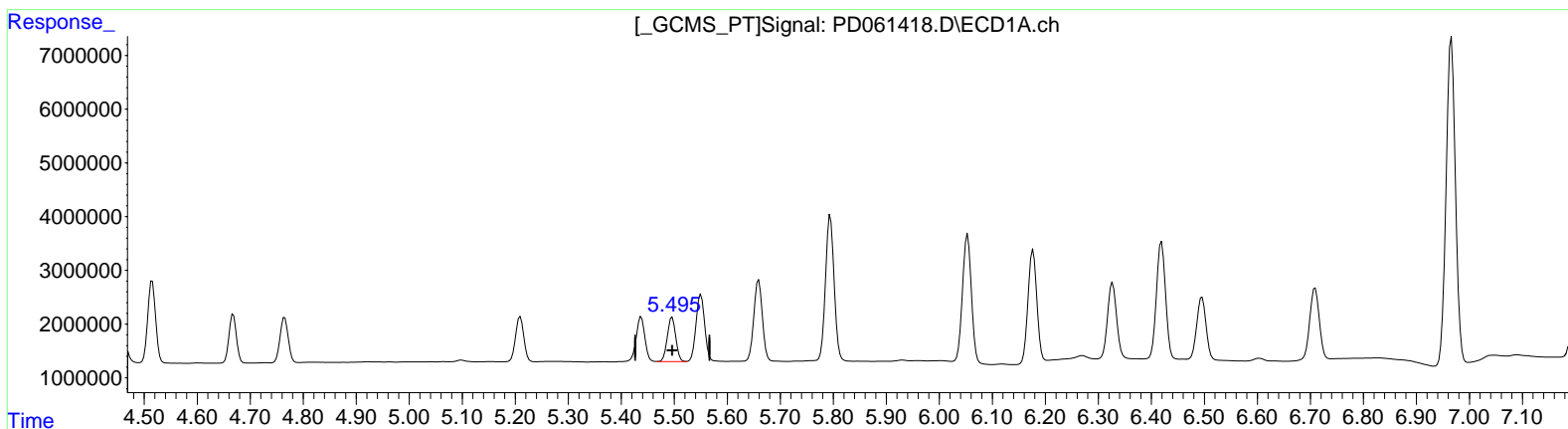
(10) trans-Chlordane (B)
 5.438min 7.123 ng/ml
 response 9574946

(10) trans-Chlordane #2 (B)
 6.089min 7.257 ng/ml
 response 93668652

Data Path : Z:\pestpcbsrv\HPCHEM1\ECD_D\Data\PD030421\
 Data File : PD061418.D
 Signal(s) : Signal #1: ECD1A.ch Signal #2: ECD2B.ch
 Acq On : 04 Mar 2021 17:04
 Operator : DD\AJ
 Sample : RESC52
 Misc :
 ALS Vial : 2 Sample Multiplier: 1

Integration File signal 1: autoint1.e
 Integration File signal 2: autoint2.e
 Quant Time: Mar 05 05:56:32 2021
 Quant Method : Z:\pestpcbsrv\HPCHEM1\ECD_D\Method\PD030421CLP.M
 Quant Title : GC Extractables
 QLast Update : Fri Mar 05 05:53:14 2021
 Response via : Initial Calibration
 Integrator: ChemStation

Volume Inj. : 1 µl
 Signal #1 Phase : ZB-MR2 Signal #2 Phase: ZB-MR1
 Signal #1 Info : 30M x 0.32mm x0.2 Signal #2 Info : 30M x 0.32mm x 0.50µm



(11) cis-Chlordane (B)
 5.496min 7.034 ng/ml
 response 9174273

(11) cis-Chlordane #2 (B)
 6.162min 7.282 ng/ml
 response 88503307