

Data Path : Z:\pestpcbsrv\HPCHEM1\ECD\_D\Data\PD030421\  
 Data File : PD061423.D  
 Signal(s) : Signal #1: ECD1A.ch Signal #2: ECD2B.ch  
 Acq On : 04 Mar 2021 18:14  
 Operator : DD\AJ  
 Sample : TOXAPH401  
 Misc :  
 ALS Vial : 7 Sample Multiplier: 1

Instrument :  
 ECD\_D  
 ClientSampled :  
 TOXAPH401

Integration File signal 1: autoint1.e  
 Integration File signal 2: autoint2.e  
 Quant Time: Mar 05 04:41:26 2021  
 Quant Method : Z:\pestpcbsrv\HPCHEM1\ECD\_D\Method\PD030421CLP.M  
 Quant Title : GC Extractables  
 QLast Update : Fri Mar 05 04:38:30 2021  
 Response via : Initial Calibration  
 Integrator: ChemStation

Volume Inj. : 1 µl  
 Signal #1 Phase : ZB-MR2 Signal #2 Phase: ZB-MR1  
 Signal #1 Info : 30M x 0.32mm x0.2 Signal #2 Info : 30M x 0.32mm x 0.50µm

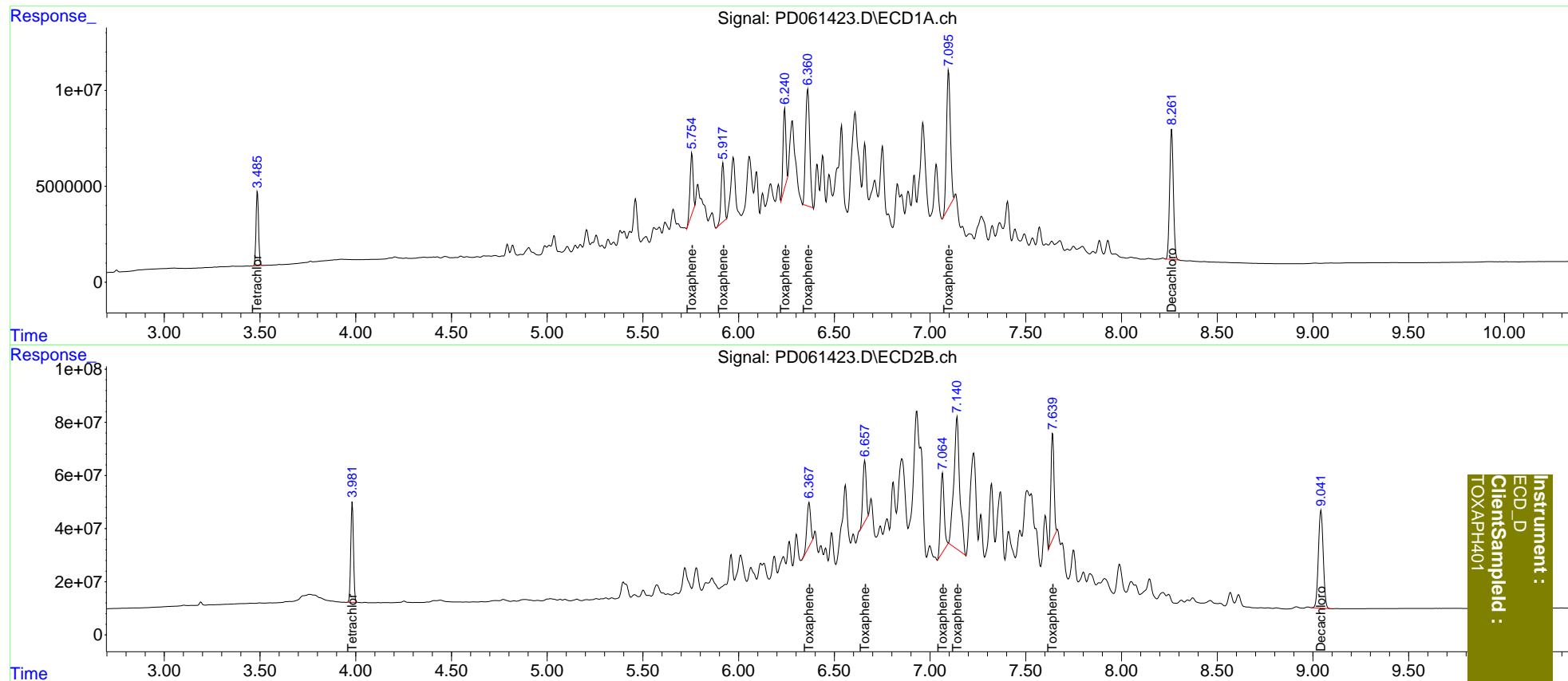
Compound	RT#1	RT#2	Resp#1	Resp#2	ng/ml	ng/ml
-----						
System Monitoring Compounds						
1) SA Tetrachlo...	3.487	3.983	35488958	369.0E6	37.715	37.759
27) SA Decachlor...	8.262	9.042	91092978	644.6E6	74.676	73.609
Target Compounds						
22) Toxaphene-1	5.756	6.368	34566904	221.1E6	3948.277	3712.913
23) Toxaphene-2	5.919	6.659	35191121	276.5E6	3868.496	3808.219
24) Toxaphene-3	6.241	7.065	41379008	394.1E6	3829.284	3879.442
25) Toxaphene-4	6.362	7.141	92158280	1075.8E6	4001.145	3807.604
26) Toxaphene-5	7.097	7.640	101.0E6	459.5E6	3841.979	3783.115
-----						

(f)=RT Delta > 1/2 Window (#)=Amounts differ by > 25% (m)=manual int.

Data Path : Z:\pestpcbsrv\HPCHEM1\ECD\_D\Data\PD030421\  
 Data File : PD061423.D  
 Signal(s) : Signal #1: ECD1A.ch Signal #2: ECD2B.ch  
 Acq On : 04 Mar 2021 18:14  
 Operator : DD\AJ  
 Sample : TOXAPH401  
 Misc :  
 ALS Vial : 7 Sample Multiplier: 1

Integration File signal 1: autoint1.e  
 Integration File signal 2: autoint2.e  
 Quant Time: Mar 05 04:41:26 2021  
 Quant Method : Z:\pestpcbsrv\HPCHEM1\ECD\_D\Method\PD030421CLP.M  
 Quant Title : GC Extractables  
 QLast Update : Fri Mar 05 04:38:30 2021  
 Response via : Initial Calibration  
 Integrator: ChemStation

Volume Inj. : 1 µl  
 Signal #1 Phase : ZB-MR2 Signal #2 Phase: ZB-MR1  
 Signal #1 Info : 30M x 0.32mm x0.2 Signal #2 Info : 30M x 0.32mm x 0.50µm



Instrument :  
 ECD\_D  
 ClientSampleId :  
 TOXAPH401