

Data Path : Z:\pestpcbsrv\HPCHEM1\ECD_D\Data\PD030422\
 Data File : PD068310.D
 Signal(s) : Signal #1: ECD1A.ch Signal #2: ECD2B.ch
 Acq On : 03 Mar 2022 14:22
 Operator : AR\AJ
 Sample : PB143065BS
 Misc : TOX BS
 ALS Vial : 10 Sample Multiplier: 1

Instrument :
 ECD_D
ClientSampleId :
 PB143065BS

Integration File signal 1: autoint1.e
 Integration File signal 2: autoint2.e
 Quant Time: Mar 04 01:03:19 2022
 Quant Method : Z:\pestpcbsrv\HPCHEM1\ECD_D\Method\DTX030122.M
 Quant Title : GC Extractables
 QLast Update : Tue Mar 01 07:11:37 2022
 Response via : Initial Calibration
 Integrator: ChemStation

Volume Inj. : 1 µl
 Signal #1 Phase : ZB-MR2 Signal #2 Phase: ZB-MR1
 Signal #1 Info : 30M x 0.32mm x0.2 Signal #2 Info : 30M x 0.32mm x 0.50µm

Compound	RT#1	RT#2	Resp#1	Resp#2	ng/ml	ng/ml

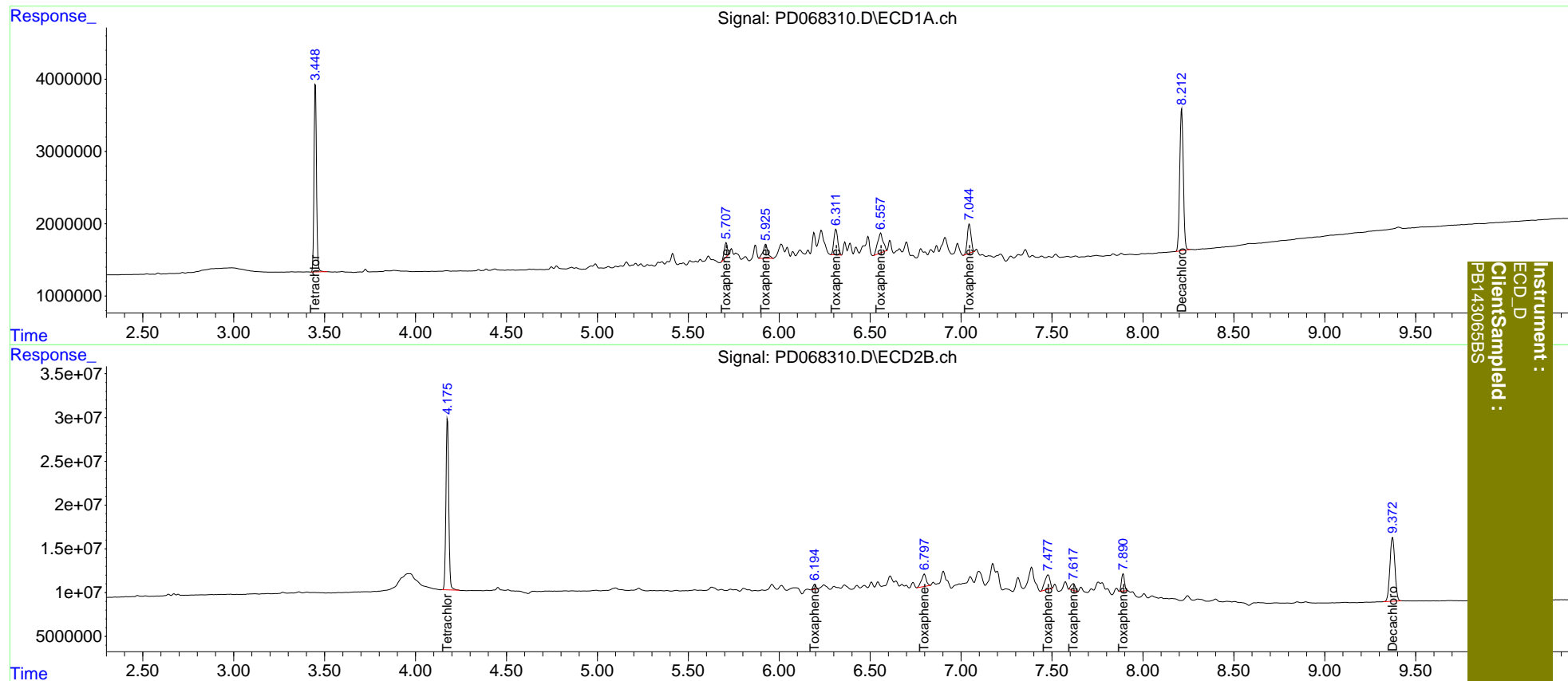
System Monitoring Compounds						
1) SA Tetrachlo...	3.450	4.176	24509755	212.1E6	19.394	21.393
7) SA Decachlor...	8.213	9.373	26920367	138.6E6	21.595	22.895
Target Compounds						
2) Toxaphene-1	5.709	6.195	2297366	6575110	215.990	228.216
3) Toxaphene-2	5.926	6.798	3500203	25790898	224.620	219.353
4) Toxaphene-3	6.312	7.479	5335995	32507566	213.483	220.264
5) Toxaphene-4	6.558	7.618	5638143	12363955	202.983	210.824
6) Toxaphene-5	7.046	7.892	5914764	22697905	216.590	227.308

(f)=RT Delta > 1/2 Window (#)=Amounts differ by > 25% (m)=manual int.

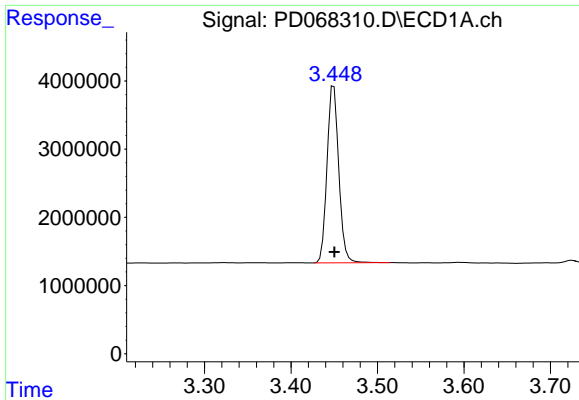
Data Path : Z:\pestpcbsrv\HPCHEM1\ECD_D\Data\PD030422\
 Data File : PD068310.D
 Signal(s) : Signal #1: ECD1A.ch Signal #2: ECD2B.ch
 Acq On : 03 Mar 2022 14:22
 Operator : AR\AJ
 Sample : PB143065BS
 Misc : TOX BS
 ALS Vial : 10 Sample Multiplier: 1

Integration File signal 1: autoint1.e
 Integration File signal 2: autoint2.e
 Quant Time: Mar 04 01:03:19 2022
 Quant Method : Z:\pestpcbsrv\HPCHEM1\ECD_D\Method\DTX030122.M
 Quant Title : GC Extractables
 QLast Update : Tue Mar 01 07:11:37 2022
 Response via : Initial Calibration
 Integrator: ChemStation

Volume Inj. : 1 µl
 Signal #1 Phase : ZB-MR2 Signal #2 Phase: ZB-MR1
 Signal #1 Info : 30M x 0.32mm x0.2 Signal #2 Info : 30M x 0.32mm x 0.50µm



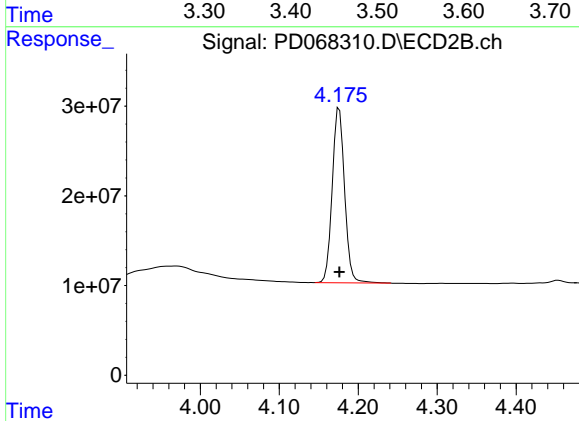
Instrument :
 ECD_D
 Client Sampled :
 PB143065BS



#1 Tetrachloro-m-xylene

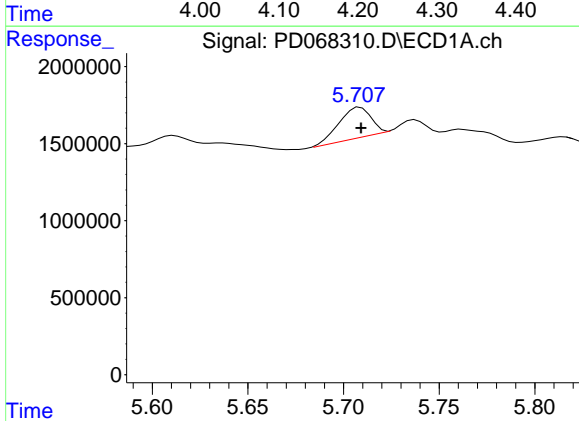
R.T.: 3.450 min
 Delta R.T.: 0.000 min
 Response: 24509755
 Conc: 19.39 ng/ml

Instrument :
 ECD_D
 ClientSampleId :
 PB143065BS



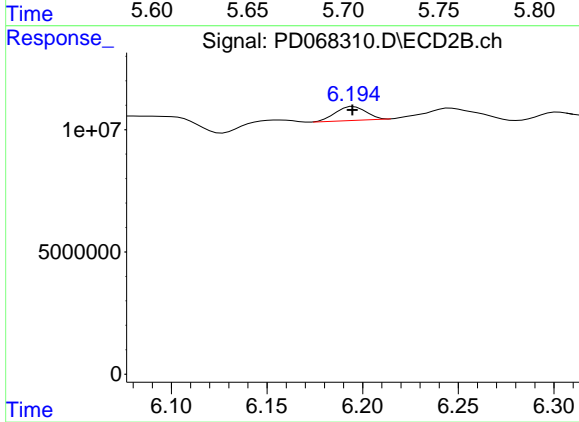
#1 Tetrachloro-m-xylene

R.T.: 4.176 min
 Delta R.T.: 0.000 min
 Response: 212090834
 Conc: 21.39 ng/ml



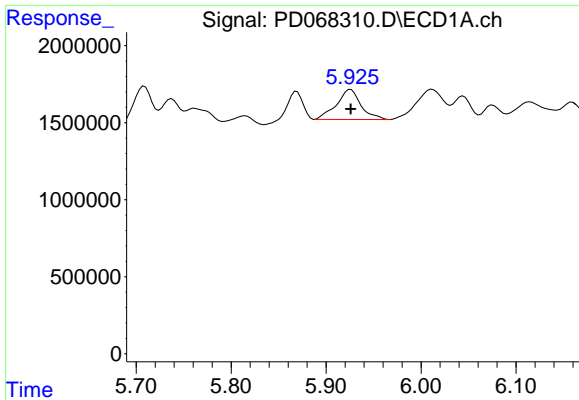
#2 Toxaphene-1

R.T.: 5.709 min
 Delta R.T.: 0.000 min
 Response: 2297366
 Conc: 215.99 ng/ml



#2 Toxaphene-1

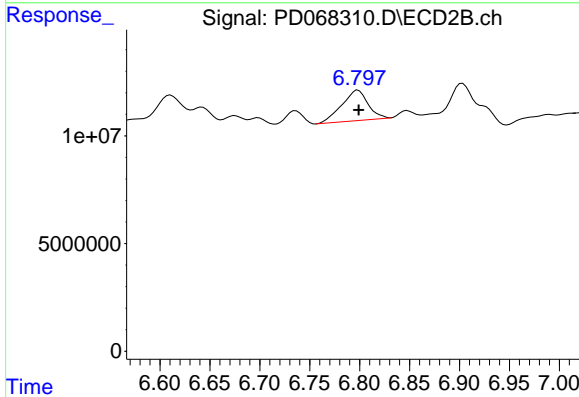
R.T.: 6.195 min
 Delta R.T.: 0.000 min
 Response: 6575110
 Conc: 228.22 ng/ml



#3 Toxaphene-2

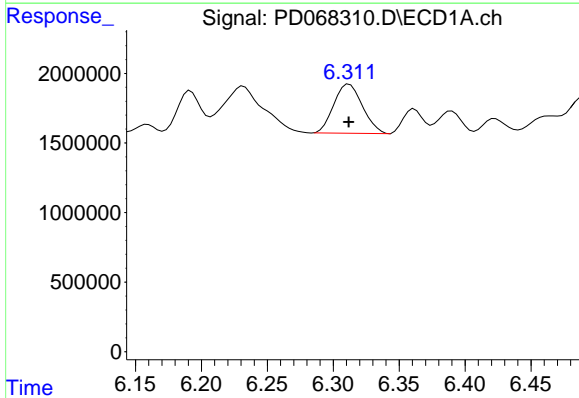
R.T.: 5.926 min
 Delta R.T.: 0.000 min
 Response: 3500203
 Conc: 224.62 ng/ml

Instrument :
 ECD_D
 ClientSampleId :
 PB143065BS



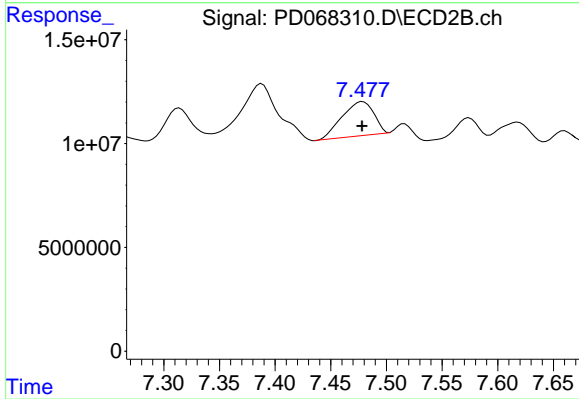
#3 Toxaphene-2

R.T.: 6.798 min
 Delta R.T.: 0.000 min
 Response: 25790898
 Conc: 219.35 ng/ml



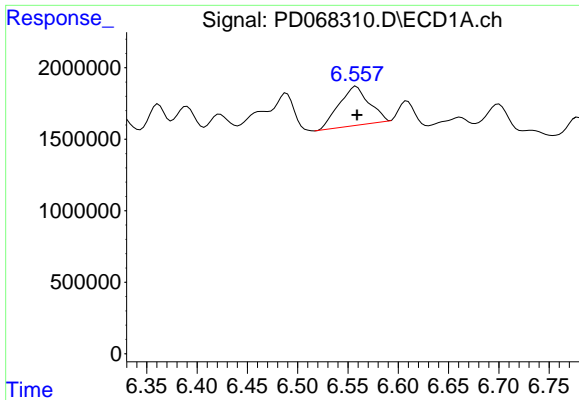
#4 Toxaphene-3

R.T.: 6.312 min
 Delta R.T.: 0.000 min
 Response: 5335995
 Conc: 213.48 ng/ml



#4 Toxaphene-3

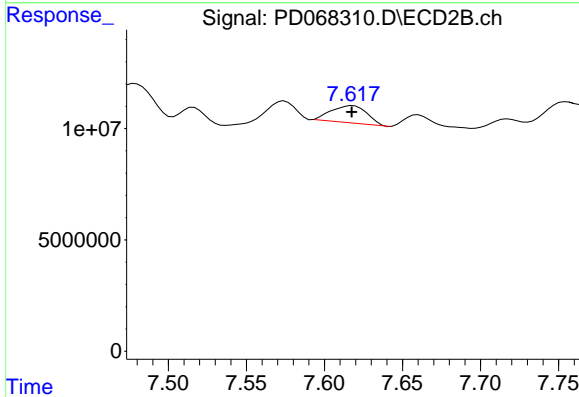
R.T.: 7.479 min
 Delta R.T.: 0.000 min
 Response: 32507566
 Conc: 220.26 ng/ml



#5 Toxaphene-4

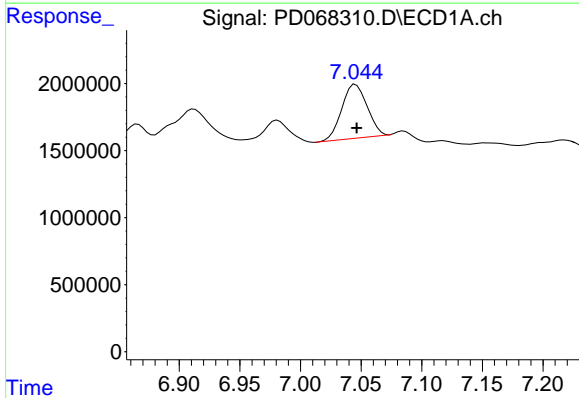
R.T.: 6.558 min
 Delta R.T.: 0.000 min
 Response: 5638143
 Conc: 202.98 ng/ml

Instrument :
 ECD_D
 ClientSampleId :
 PB143065BS



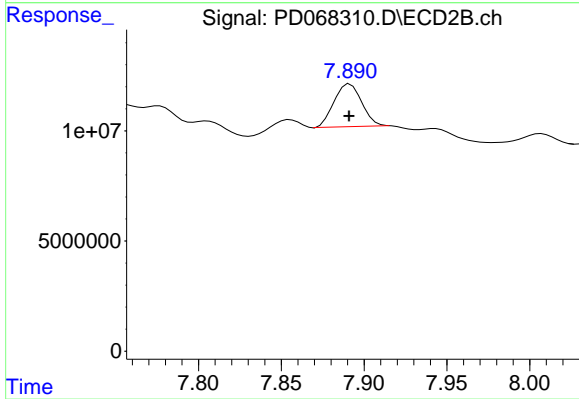
#5 Toxaphene-4

R.T.: 7.618 min
 Delta R.T.: 0.000 min
 Response: 12363955
 Conc: 210.82 ng/ml



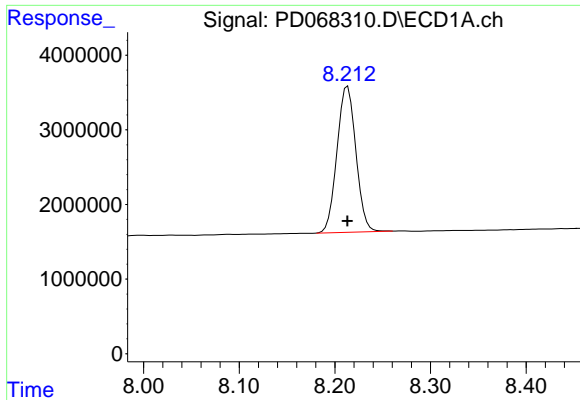
#6 Toxaphene-5

R.T.: 7.046 min
 Delta R.T.: 0.000 min
 Response: 5914764
 Conc: 216.59 ng/ml



#6 Toxaphene-5

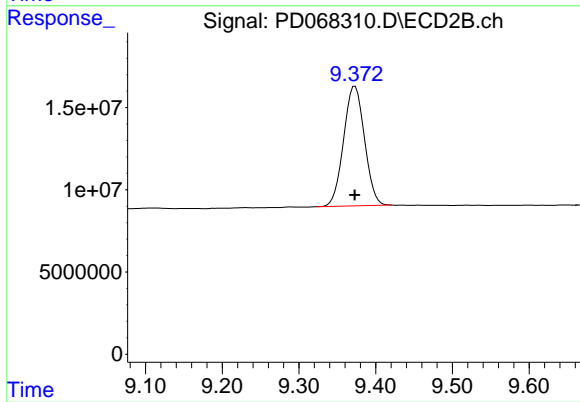
R.T.: 7.892 min
 Delta R.T.: 0.000 min
 Response: 22697905
 Conc: 227.31 ng/ml



#7 Decachlorobiphenyl

R.T.: 8.213 min
Delta R.T.: 0.000 min
Response: 26920367
Conc: 21.59 ng/ml

Instrument :
ECD_D
ClientSampleId :
PB143065BS



#7 Decachlorobiphenyl

R.T.: 9.373 min
Delta R.T.: 0.000 min
Response: 138612508
Conc: 22.89 ng/ml