

Data Path : Z:\pestpcbsrv\HPCHEM1\ECD\_D\Data\PD030422\  
 Data File : PD068312.D  
 Signal(s) : Signal #1: ECD1A.ch Signal #2: ECD2B.ch  
 Acq On : 03 Mar 2022 14:50  
 Operator : AR\AJ  
 Sample : PB143065BS  
 Misc :  
 ALS Vial : 12 Sample Multiplier: 1

**Instrument :**

ECD\_D

**ClientSampleId :**

PB143065BS

**Manual Integrations**

**APPROVED**

Reviewed By :Abdul Mirza 03/04/2022  
 Supervised By :Ankita Jodhani 03/04/2022

Integration File signal 1: autoint1.e  
 Integration File signal 2: autoint2.e  
 Quant Time: Mar 04 01:08:01 2022  
 Quant Method : Z:\pestpcbsrv\HPCHEM1\ECD\_D\Method\PD030122.M  
 Quant Title : GC Extractables  
 QLast Update : Tue Mar 01 06:48:49 2022  
 Response via : Initial Calibration  
 Integrator: ChemStation

Volume Inj. : 2 µl  
 Signal #1 Phase : ZB-MR2 Signal #2 Phase: ZB-MR1  
 Signal #1 Info : 30M x 0.32mm x0.2 Signal #2 Info : 30M x 0.32mm x 0.50µm

Compound	RT#1	RT#2	Resp#1	Resp#2	ng/ml	ng/ml
-----						
System Monitoring Compounds						
1) SA Tetrachlo...	3.449	4.176	21208394	184.6E6	18.092	19.236
28) SA Decachlor...	8.212	9.373	24349397	124.1E6	20.924	20.926
Target Compounds						
2) A alpha-BHC	3.889	4.572	81577485	637.6E6	47.542	46.467
3) MA gamma-BHC...	4.173	4.863	75509938	579.9E6	47.417	46.768
4) MA Heptachlor	4.472	5.390	71485608	540.0E6	47.353	47.671
5) MB Aldrin	4.720	5.703	75721782	567.7E6	48.348	48.018
6) B beta-BHC	4.423	5.025	31791309	245.1E6	45.309	45.346
7) B delta-BHC	4.627	5.251	75956859	578.5E6	47.076	46.513
8) B Heptachlo...	5.164	6.090	69001659	510.0E6	47.330	47.589m
9) A Endosulfan I	5.503	6.454	64250357	459.7E6	47.112	47.644
10) B gamma-Chl...	5.391	6.327	70039402	513.2E6	47.049	48.534
11) B alpha-Chl...	5.449	6.403	69308348	493.5E6	47.167	47.879
12) B 4,4'-DDE	5.616	6.552	66763212	462.8E6	48.946	47.344
13) MA Dieldrin	5.747	6.712	71195238	495.3E6	48.416	48.060
14) MA Endrin	6.006	6.932	64484981	363.1E6	52.200	47.212
15) B Endosulfa...	6.279	7.137	62356141	396.7E6	49.010	48.281
16) A 4,4'-DDD	6.133	7.043	56165402	370.6E6	47.360	47.091
17) MA 4,4'-DDT	6.374	7.346	54091315	340.6E6	49.050	48.133
18) B Endrin al...	6.449	7.261	49658669	322.2E6	54.182	53.541
19) B Endosulfa...	6.662	7.486	60062686	369.4E6	47.661	47.475
20) A Methoxychlor	6.925	7.799	31623573	167.8E6	48.734	48.308
21) B Endrin ke...	7.154	7.961	70634634	388.6E6	47.977m	46.296
22) Mirex	7.340	8.428	59904207	307.5E6	47.261	48.084
-----						

(f)=RT Delta > 1/2 Window (#)=Amounts differ by > 25% (m)=manual int.

Data Path : Z:\pestpcbsrv\HPCHEM1\ECD\_D\Data\PD030422\  
 Data File : PD068312.D  
 Signal(s) : Signal #1: ECD1A.ch Signal #2: ECD2B.ch  
 Acq On : 03 Mar 2022 14:50  
 Operator : AR\AJ  
 Sample : PB143065BS  
 Misc :  
 ALS Vial : 12 Sample Multiplier: 1

**Instrument :**

ECD\_D

**ClientSampleId :**

PB143065BS

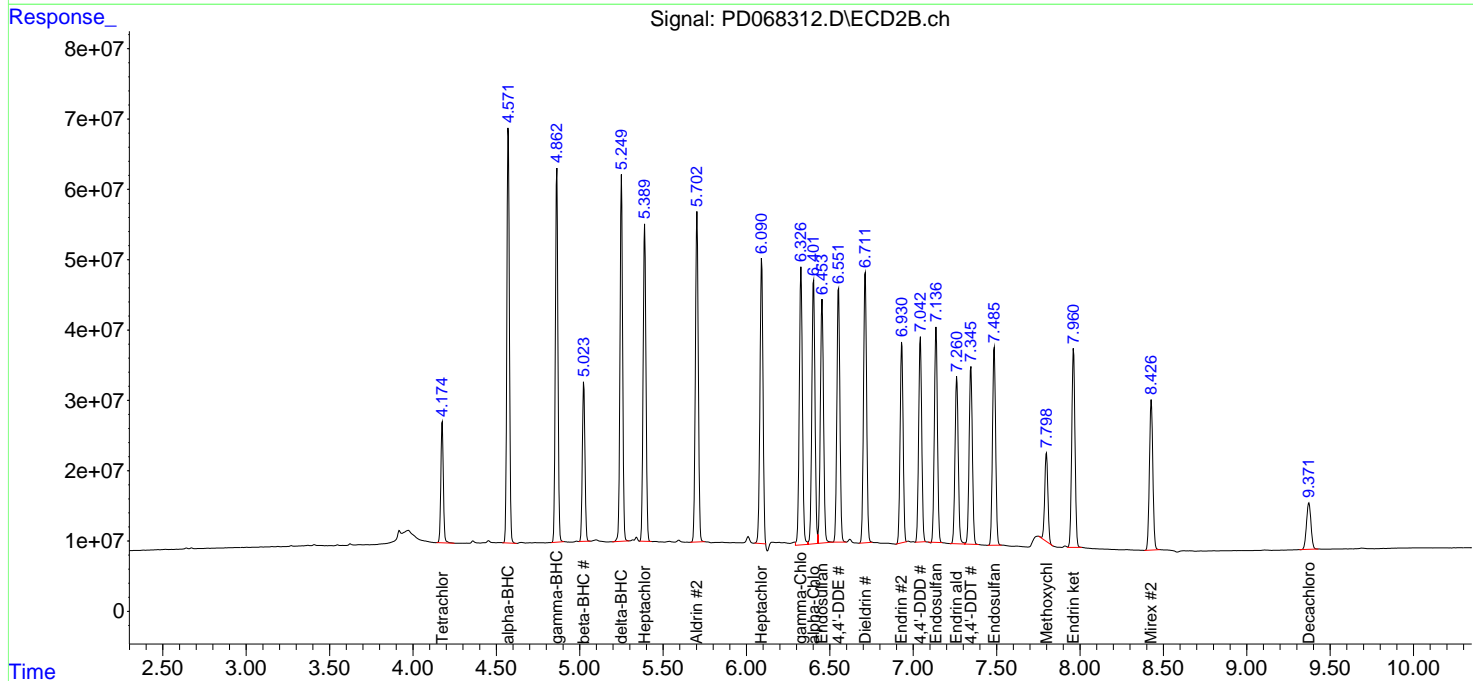
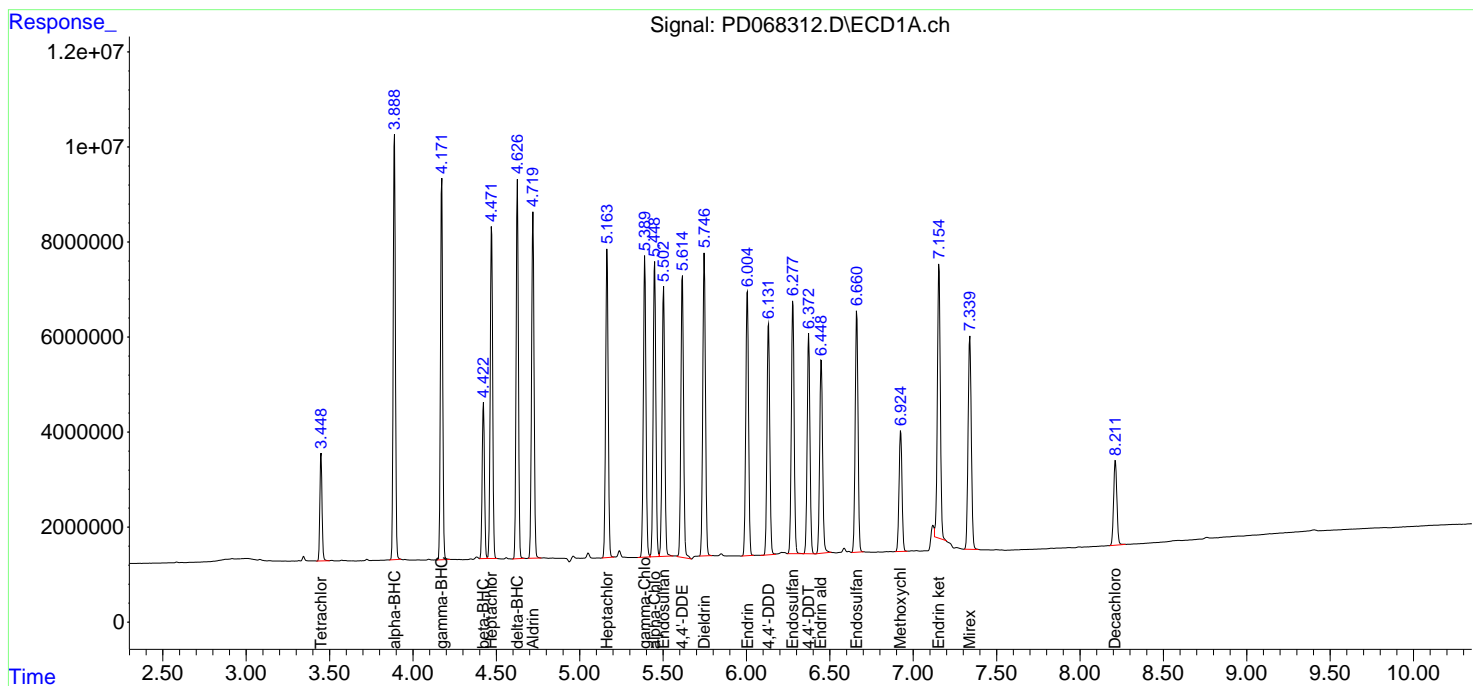
**Manual Integrations**

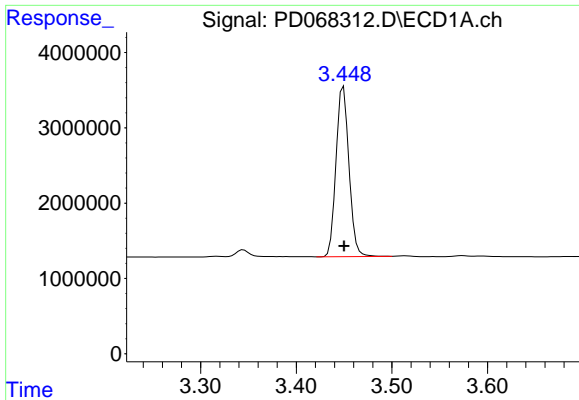
**APPROVED**

Reviewed By :Abdul Mirza 03/04/2022  
 Supervised By :Ankita Jodhani 03/04/2022

Integration File signal 1: autoint1.e  
 Integration File signal 2: autoint2.e  
 Quant Time: Mar 04 01:08:01 2022  
 Quant Method : Z:\pestpcbsrv\HPCHEM1\ECD\_D\Method\PD030122.M  
 Quant Title : GC Extractables  
 QLast Update : Tue Mar 01 06:48:49 2022  
 Response via : Initial Calibration  
 Integrator: ChemStation

Volume Inj. : 2 µl  
 Signal #1 Phase : ZB-MR2 Signal #2 Phase: ZB-MR1  
 Signal #1 Info : 30M x 0.32mm x0.2 Signal #2 Info : 30M x 0.32mm x 0.50µm



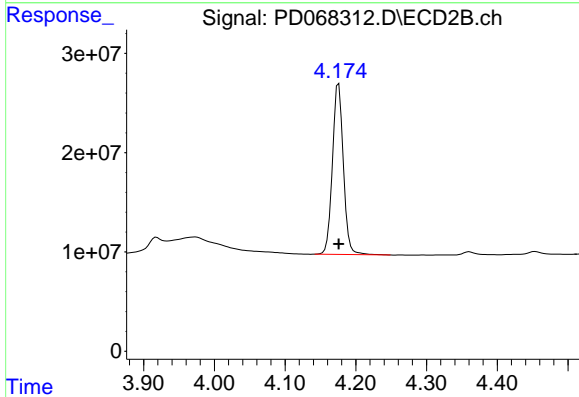


#1 Tetrachloro-m-xylene  
 R.T.: 3.449 min  
 Delta R.T.: 0.000 min  
 Response: 21208394  
 Conc: 18.09 ng/ml

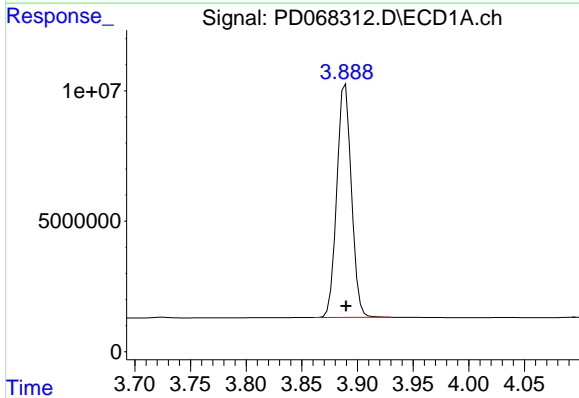
Instrument :  
 ECD\_D  
 ClientSampleId :  
 PB143065BS

Manual Integrations  
 APPROVED

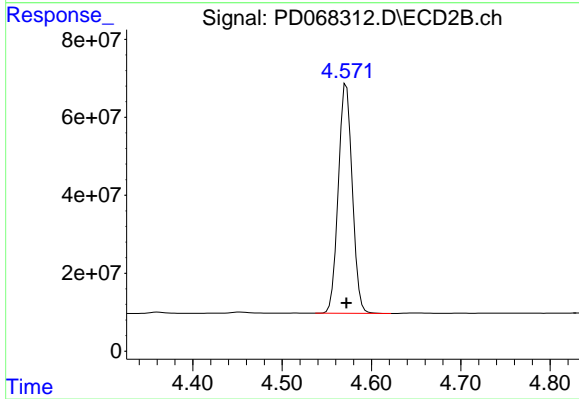
Reviewed By :Abdul Mirza 03/04/2022  
 Supervised By :Ankita Jodhani 03/04/2022



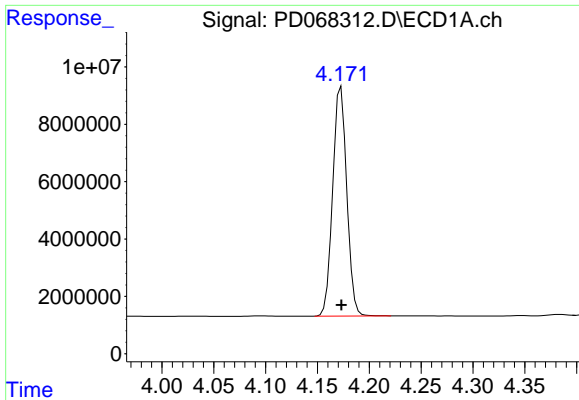
#1 Tetrachloro-m-xylene  
 R.T.: 4.176 min  
 Delta R.T.: 0.000 min  
 Response: 184628852  
 Conc: 19.24 ng/ml



#2 alpha-BHC  
 R.T.: 3.889 min  
 Delta R.T.: 0.000 min  
 Response: 81577485  
 Conc: 47.54 ng/ml



#2 alpha-BHC  
 R.T.: 4.572 min  
 Delta R.T.: 0.000 min  
 Response: 637596619  
 Conc: 46.47 ng/ml



#3 gamma-BHC (Lindane)

R.T.: 4.173 min  
 Delta R.T.: 0.000 min  
 Response: 75509938  
 Conc: 47.42 ng/ml

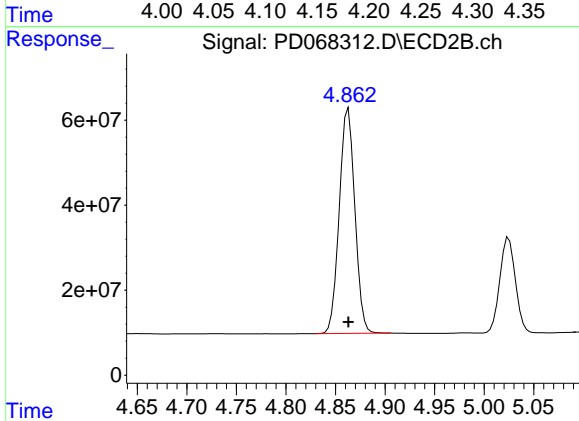
Instrument :

ECD\_D

ClientSampleId :  
 PB143065BS

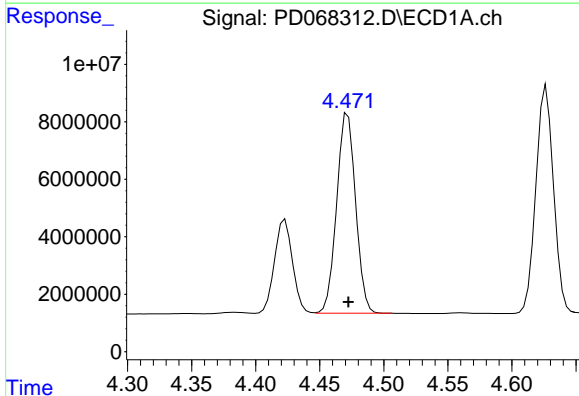
Manual Integrations  
 APPROVED

Reviewed By :Abdul Mirza 03/04/2022  
 Supervised By :Ankita Jodhani 03/04/2022



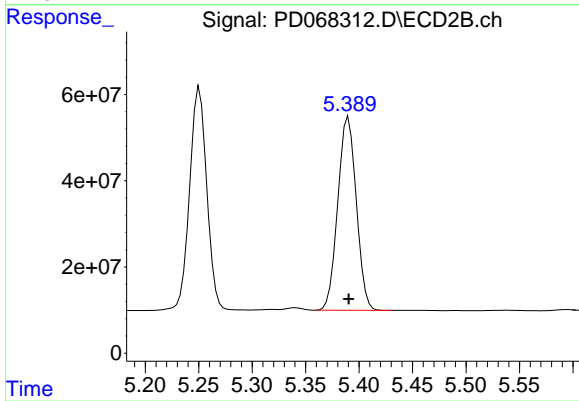
#3 gamma-BHC (Lindane)

R.T.: 4.863 min  
 Delta R.T.: 0.000 min  
 Response: 579909536  
 Conc: 46.77 ng/ml



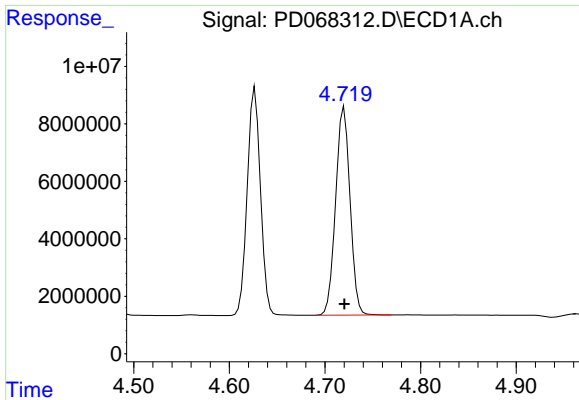
#4 Heptachlor

R.T.: 4.472 min  
 Delta R.T.: 0.000 min  
 Response: 71485608  
 Conc: 47.35 ng/ml



#4 Heptachlor

R.T.: 5.390 min  
 Delta R.T.: 0.000 min  
 Response: 539954845  
 Conc: 47.67 ng/ml

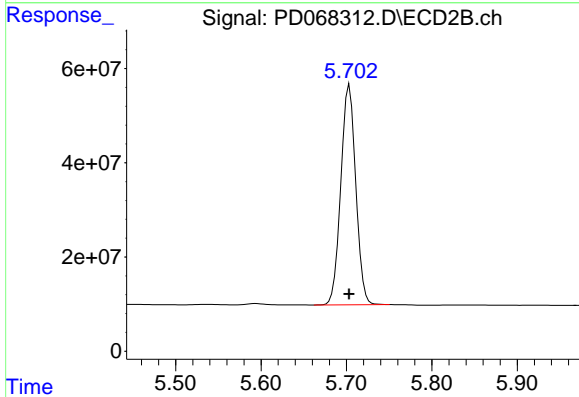


#5 Aldrin  
 R.T.: 4.720 min  
 Delta R.T.: 0.000 min  
 Response: 75721782  
 Conc: 48.35 ng/ml

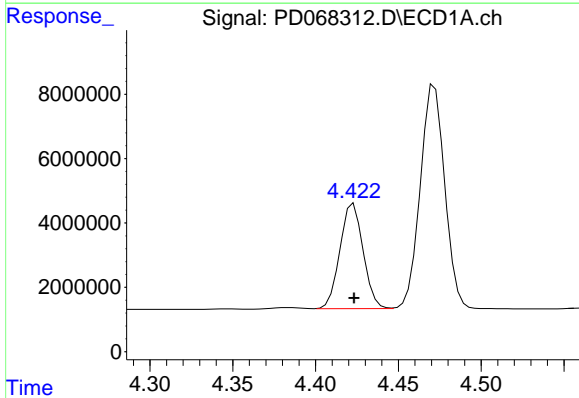
Instrument :  
 ECD\_D  
 ClientSampleId :  
 PB143065BS

Manual Integrations  
 APPROVED

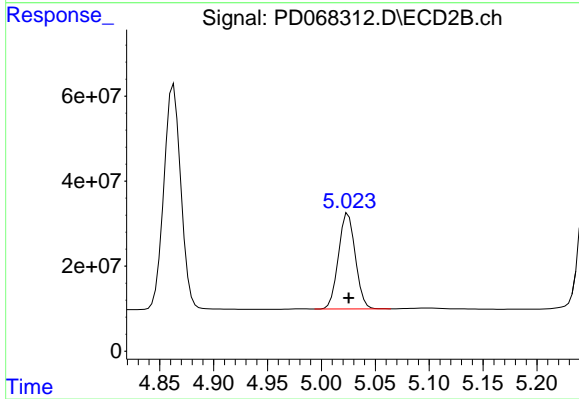
Reviewed By :Abdul Mirza 03/04/2022  
 Supervised By :Ankita Jodhani 03/04/2022



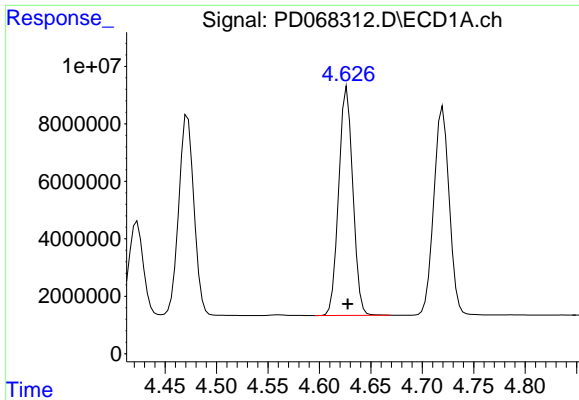
#5 Aldrin  
 R.T.: 5.703 min  
 Delta R.T.: 0.000 min  
 Response: 567748437  
 Conc: 48.02 ng/ml



#6 beta-BHC  
 R.T.: 4.423 min  
 Delta R.T.: 0.000 min  
 Response: 31791309  
 Conc: 45.31 ng/ml



#6 beta-BHC  
 R.T.: 5.025 min  
 Delta R.T.: 0.000 min  
 Response: 245117950  
 Conc: 45.35 ng/ml

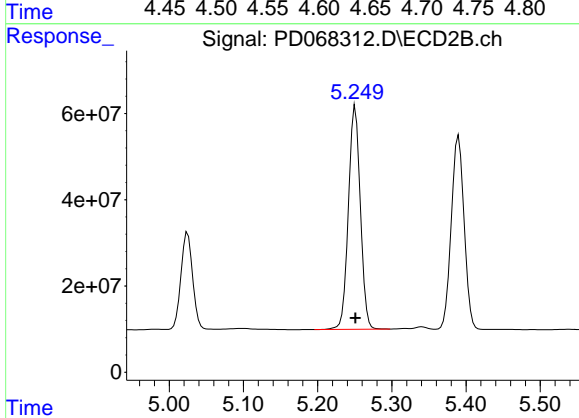


#7 delta-BHC  
 R.T.: 4.627 min  
 Delta R.T.: 0.000 min  
 Response: 75956859  
 Conc: 47.08 ng/ml

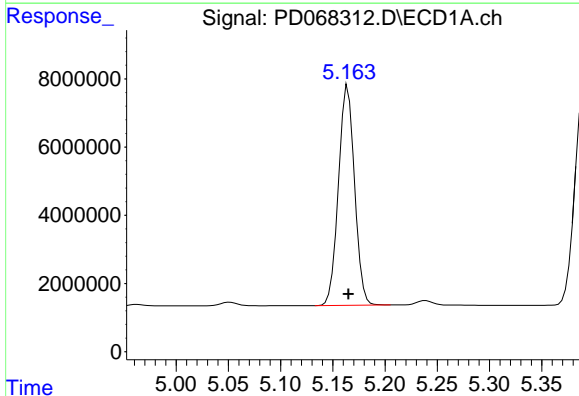
Instrument :  
 ECD\_D  
 ClientSampleId :  
 PB143065BS

Manual Integrations  
 APPROVED

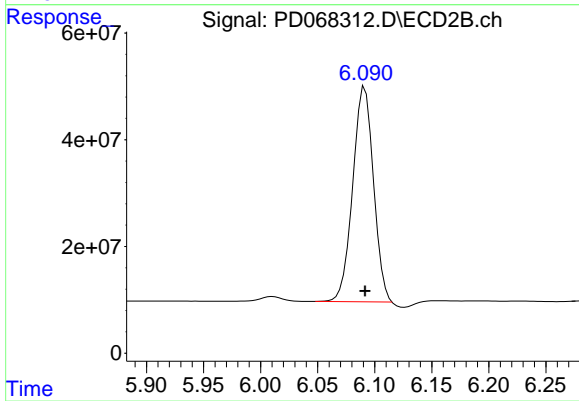
Reviewed By :Abdul Mirza 03/04/2022  
 Supervised By :Ankita Jodhani 03/04/2022



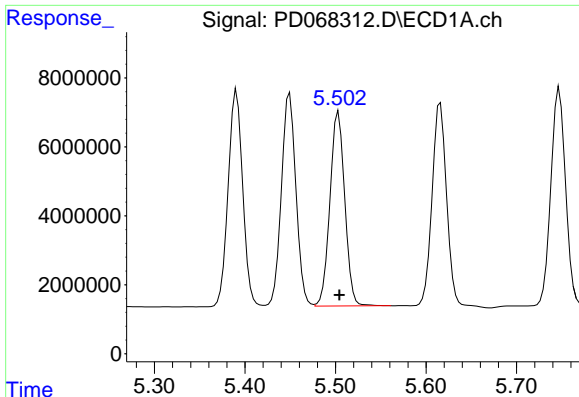
#7 delta-BHC  
 R.T.: 5.251 min  
 Delta R.T.: 0.000 min  
 Response: 578530236  
 Conc: 46.51 ng/ml



#8 Heptachlor epoxide  
 R.T.: 5.164 min  
 Delta R.T.: 0.000 min  
 Response: 69001659  
 Conc: 47.33 ng/ml



#8 Heptachlor epoxide  
 R.T.: 6.090 min  
 Delta R.T.: -0.002 min  
 Response: 510041739  
 Conc: 47.59 ng/ml m



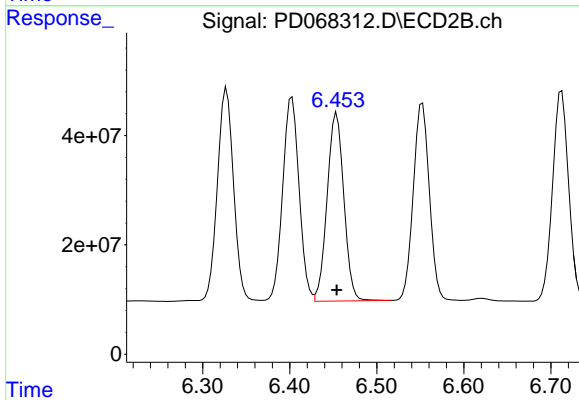
#9 Endosulfan I

R.T.: 5.503 min  
 Delta R.T.: 0.000 min  
 Response: 64250357  
 Conc: 47.11 ng/ml

Instrument :  
 ECD\_D  
 ClientSampleId :  
 PB143065BS

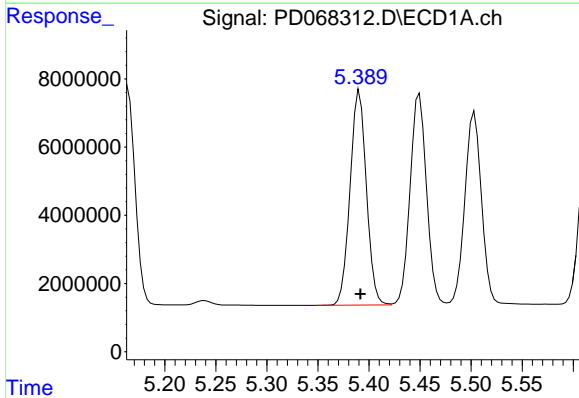
Manual Integrations  
 APPROVED

Reviewed By :Abdul Mirza 03/04/2022  
 Supervised By :Ankita Jodhani 03/04/2022



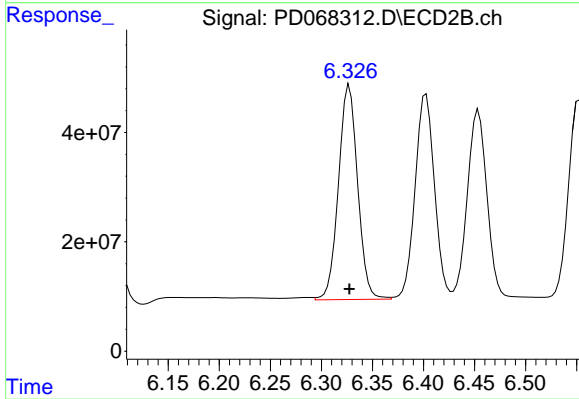
#9 Endosulfan I

R.T.: 6.454 min  
 Delta R.T.: 0.000 min  
 Response: 459728725  
 Conc: 47.64 ng/ml



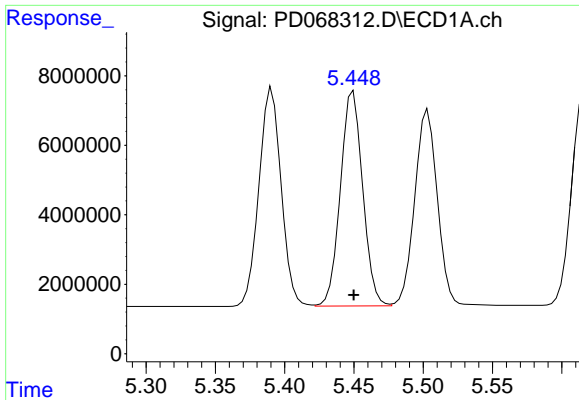
#10 gamma-Chlordane

R.T.: 5.391 min  
 Delta R.T.: 0.000 min  
 Response: 70039402  
 Conc: 47.05 ng/ml



#10 gamma-Chlordane

R.T.: 6.327 min  
 Delta R.T.: 0.000 min  
 Response: 513193557  
 Conc: 48.53 ng/ml



#11 alpha-Chlordane

R.T.: 5.449 min  
 Delta R.T.: 0.000 min  
 Response: 69308348  
 Conc: 47.17 ng/ml

Instrument :

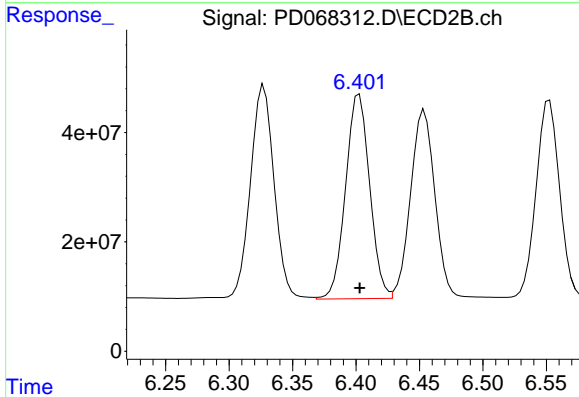
ECD\_D

ClientSampleId :

PB143065BS

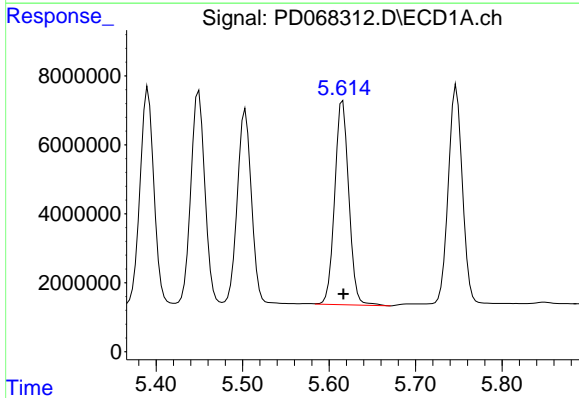
Manual Integrations  
**APPROVED**

Reviewed By :Abdul Mirza 03/04/2022  
 Supervised By :Ankita Jodhani 03/04/2022



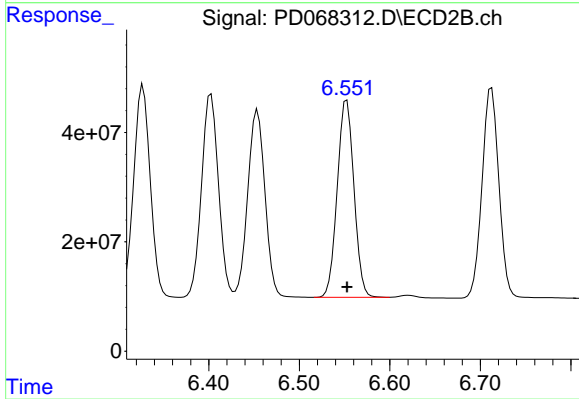
#11 alpha-Chlordane

R.T.: 6.403 min  
 Delta R.T.: 0.000 min  
 Response: 493509694  
 Conc: 47.88 ng/ml



#12 4,4'-DDE

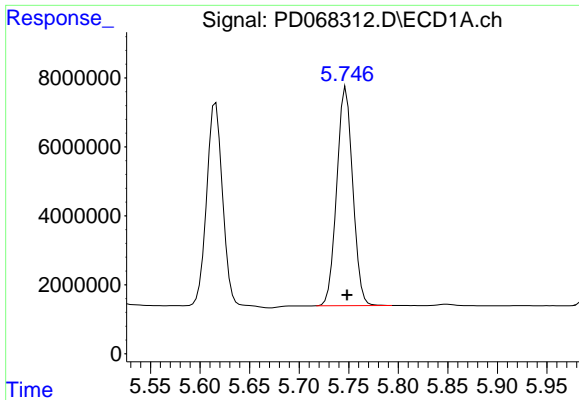
R.T.: 5.616 min  
 Delta R.T.: 0.000 min  
 Response: 66763212  
 Conc: 48.95 ng/ml



#12 4,4'-DDE

R.T.: 6.552 min  
 Delta R.T.: 0.000 min  
 Response: 462846505  
 Conc: 47.34 ng/ml





#13 Dieldrin

R.T.: 5.747 min  
 Delta R.T.: 0.000 min  
 Response: 71195238  
 Conc: 48.42 ng/ml

Instrument :

ECD\_D

ClientSampleId :

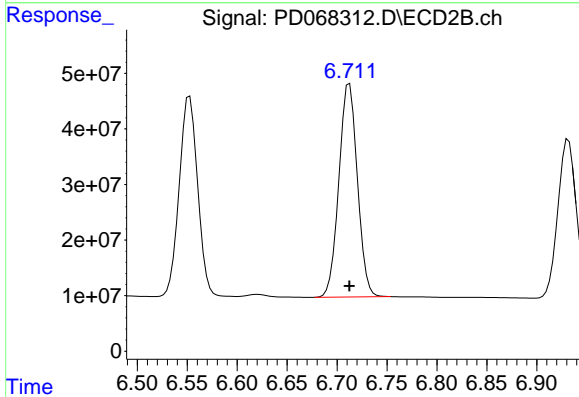
PB143065BS

Manual Integrations

APPROVED

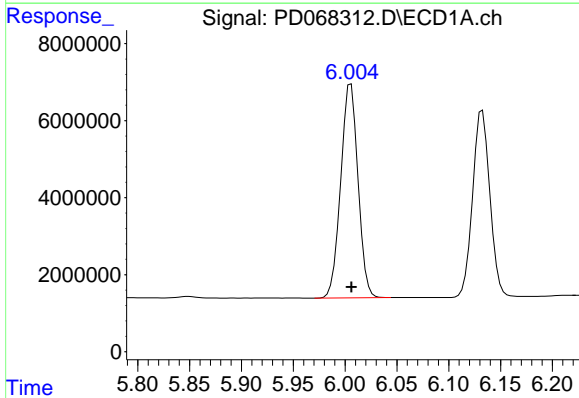
Reviewed By :Abdul Mirza 03/04/2022

Supervised By :Ankita Jodhani 03/04/2022



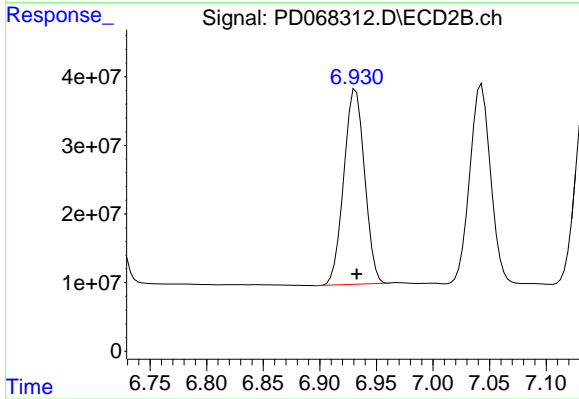
#13 Dieldrin

R.T.: 6.712 min  
 Delta R.T.: 0.000 min  
 Response: 495265547  
 Conc: 48.06 ng/ml



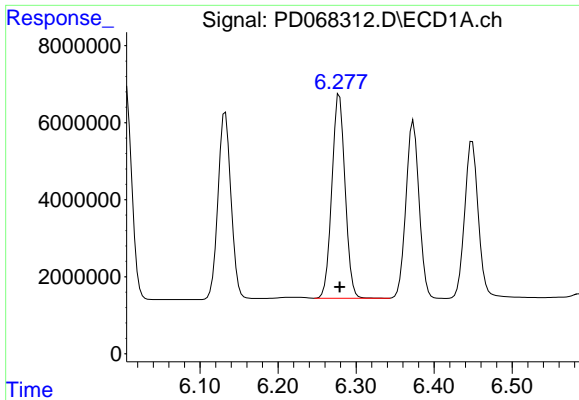
#14 Endrin

R.T.: 6.006 min  
 Delta R.T.: 0.000 min  
 Response: 64484981  
 Conc: 52.20 ng/ml



#14 Endrin

R.T.: 6.932 min  
 Delta R.T.: 0.000 min  
 Response: 363084314  
 Conc: 47.21 ng/ml



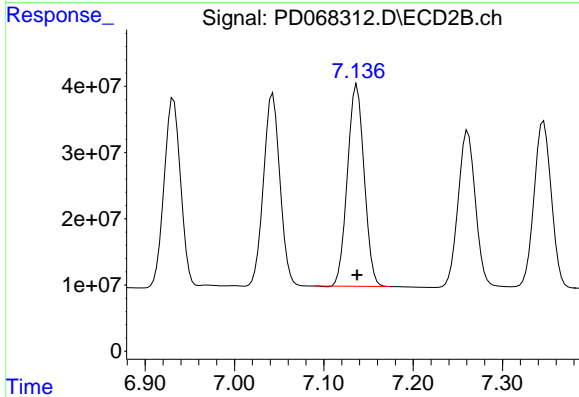
#15 Endosulfan II

R.T.: 6.279 min  
 Delta R.T.: 0.000 min  
 Response: 62356141  
 Conc: 49.01 ng/ml

Instrument :  
 ECD\_D  
 ClientSampleId :  
 PB143065BS

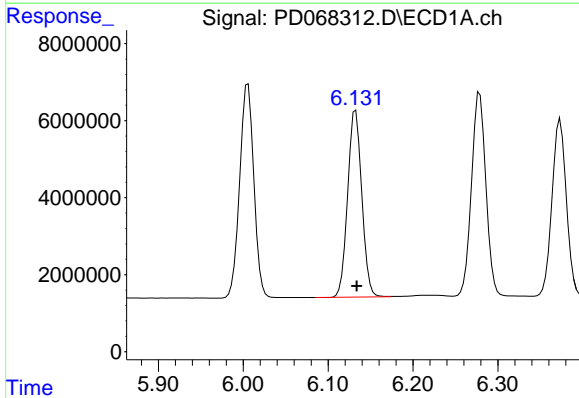
Manual Integrations  
 APPROVED

Reviewed By :Abdul Mirza 03/04/2022  
 Supervised By :Ankita Jodhani 03/04/2022



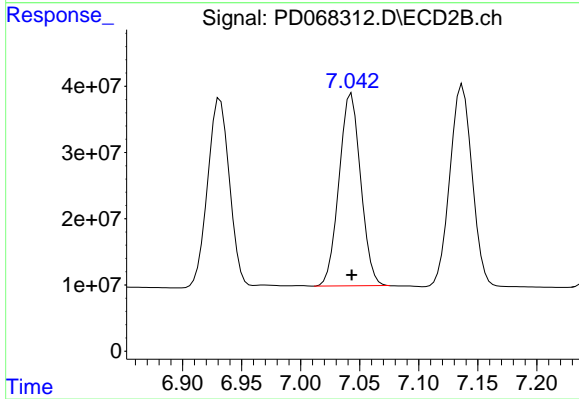
#15 Endosulfan II

R.T.: 7.137 min  
 Delta R.T.: 0.000 min  
 Response: 396735500  
 Conc: 48.28 ng/ml



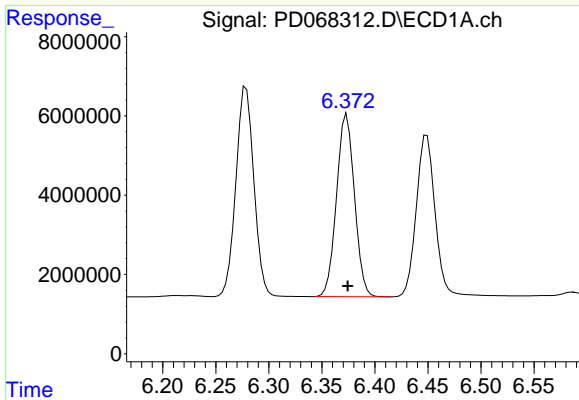
#16 4,4'-DDD

R.T.: 6.133 min  
 Delta R.T.: -0.001 min  
 Response: 56165402  
 Conc: 47.36 ng/ml



#16 4,4'-DDD

R.T.: 7.043 min  
 Delta R.T.: 0.000 min  
 Response: 370608729  
 Conc: 47.09 ng/ml



#17 4,4'-DDT

R.T.: 6.374 min  
 Delta R.T.: 0.000 min  
 Response: 54091315  
 Conc: 49.05 ng/ml

Instrument :

ECD\_D

ClientSampleId :

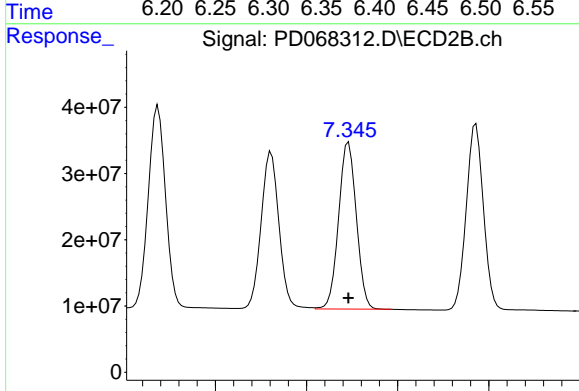
PB143065BS

Manual Integrations

APPROVED

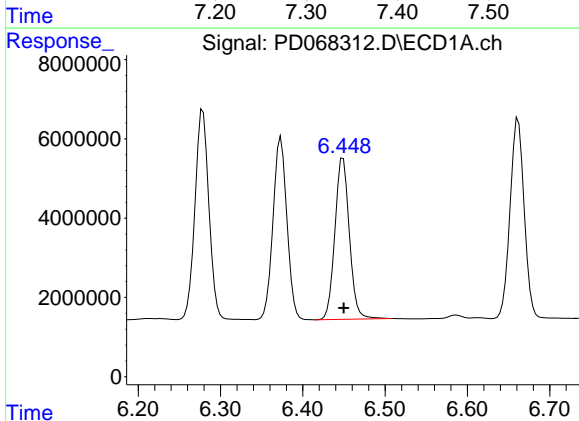
Reviewed By :Abdul Mirza 03/04/2022

Supervised By :Ankita Jodhani 03/04/2022



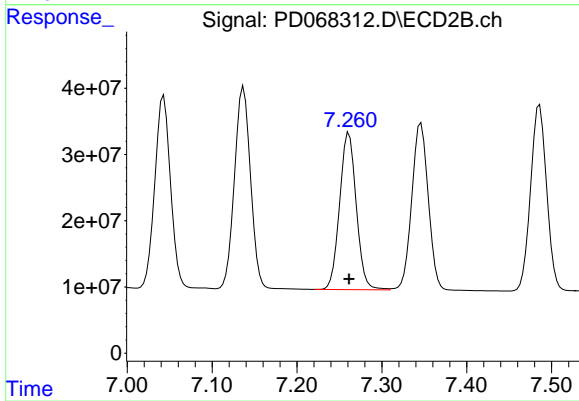
#17 4,4'-DDT

R.T.: 7.346 min  
 Delta R.T.: 0.000 min  
 Response: 340567288  
 Conc: 48.13 ng/ml



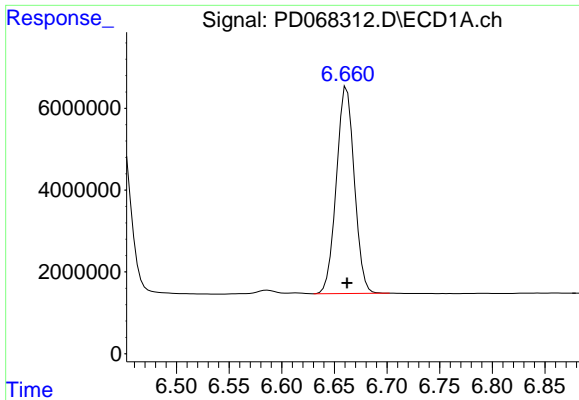
#18 Endrin aldehyde

R.T.: 6.449 min  
 Delta R.T.: 0.000 min  
 Response: 49658669  
 Conc: 54.18 ng/ml



#18 Endrin aldehyde

R.T.: 7.261 min  
 Delta R.T.: 0.000 min  
 Response: 322187996  
 Conc: 53.54 ng/ml



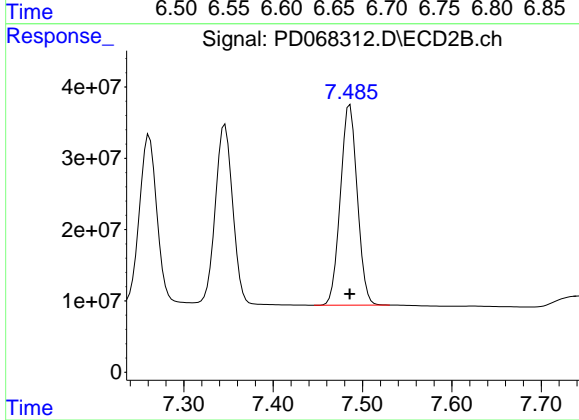
#19 Endosulfan Sulfate

R.T.: 6.662 min  
 Delta R.T.: 0.000 min  
 Response: 60062686  
 Conc: 47.66 ng/ml

Instrument : ECD\_D  
 ClientSampleId : PB143065BS

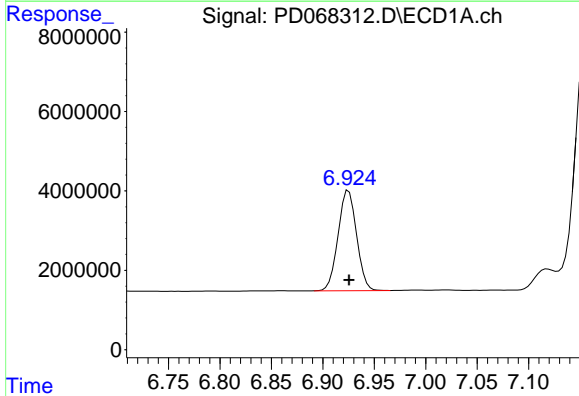
Manual Integrations  
 APPROVED

Reviewed By :Abdul Mirza 03/04/2022  
 Supervised By :Ankita Jodhani 03/04/2022



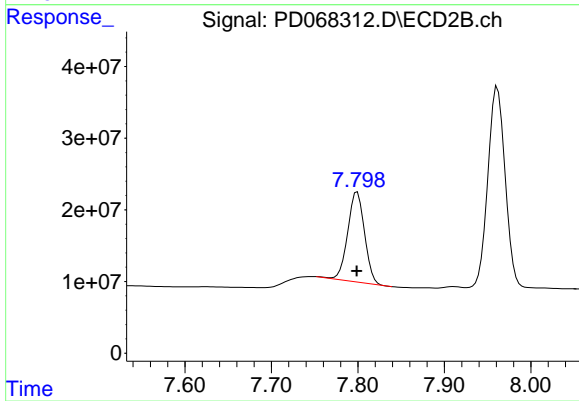
#19 Endosulfan Sulfate

R.T.: 7.486 min  
 Delta R.T.: 0.000 min  
 Response: 369372462  
 Conc: 47.48 ng/ml



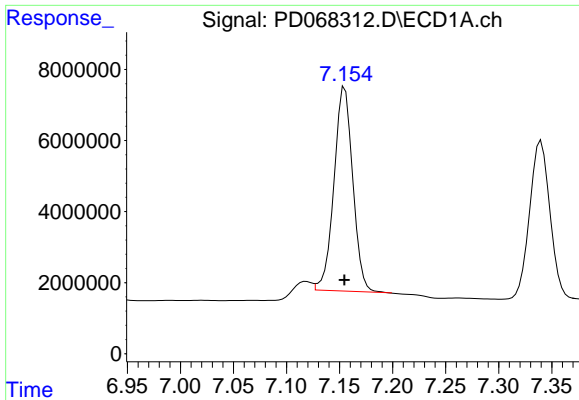
#20 Methoxychlor

R.T.: 6.925 min  
 Delta R.T.: 0.000 min  
 Response: 31623573  
 Conc: 48.73 ng/ml



#20 Methoxychlor

R.T.: 7.799 min  
 Delta R.T.: 0.000 min  
 Response: 167844910  
 Conc: 48.31 ng/ml



#21 Endrin ketone

R.T.: 7.154 min  
 Delta R.T.: -0.001 min  
 Response: 70634634  
 Conc: 47.98 ng/ml

Instrument :

ECD\_D

ClientSampleId :

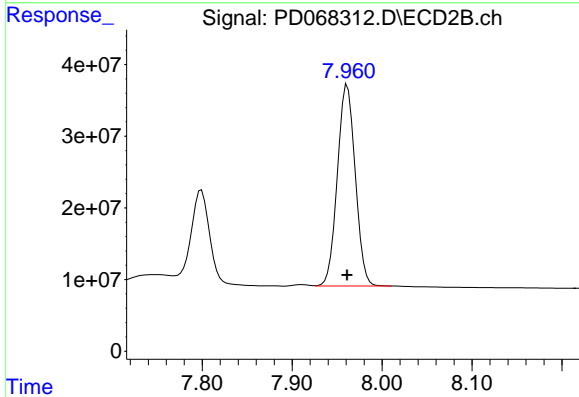
PB143065BS

Manual Integrations

APPROVED

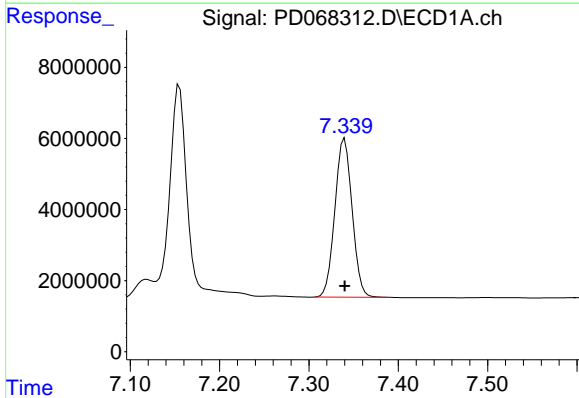
Reviewed By :Abdul Mirza 03/04/2022

Supervised By :Ankita Jodhani 03/04/2022



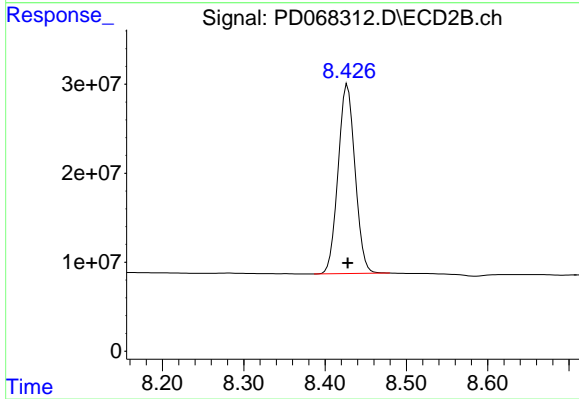
#21 Endrin ketone

R.T.: 7.961 min  
 Delta R.T.: 0.000 min  
 Response: 388642685  
 Conc: 46.30 ng/ml



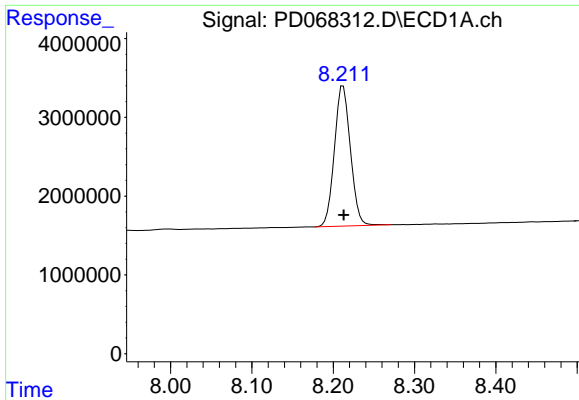
#22 Mirex

R.T.: 7.340 min  
 Delta R.T.: 0.000 min  
 Response: 59904207  
 Conc: 47.26 ng/ml



#22 Mirex

R.T.: 8.428 min  
 Delta R.T.: 0.000 min  
 Response: 307530141  
 Conc: 48.08 ng/ml



#28 Decachlorobiphenyl

R.T.: 8.212 min  
Delta R.T.: 0.000 min  
Response: 24349397  
Conc: 20.92 ng/ml

Instrument :

ECD\_D

ClientSampleId :

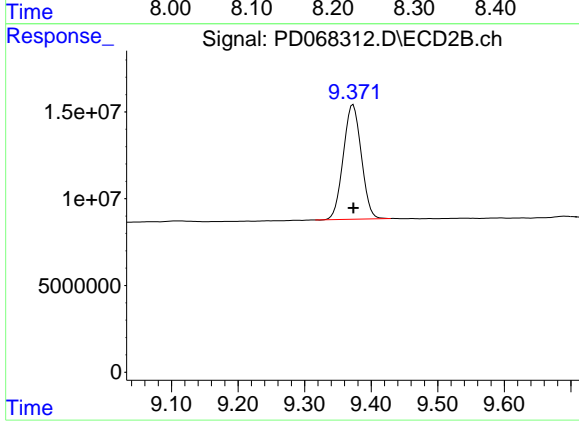
PB143065BS

Manual Integrations

APPROVED

Reviewed By :Abdul Mirza 03/04/2022

Supervised By :Ankita Jodhani 03/04/2022



#28 Decachlorobiphenyl

R.T.: 9.373 min  
Delta R.T.: 0.000 min  
Response: 124063119  
Conc: 20.93 ng/ml