

Data Path : Z:\pestpcbsrv\HPCHEM1\ECD_D\Data\PD030422\
 Data File : PD068314.D
 Signal(s) : Signal #1: ECD1A.ch Signal #2: ECD2B.ch
 Acq On : 03 Mar 2022 15:26
 Operator : AR\AJ
 Sample : N1751-07MS
 Misc :
 ALS Vial : 14 Sample Multiplier: 1

Instrument :
 ECD_D
ClientSampleId :
 DUM-14MS

Manual Integrations
APPROVED

Reviewed By :Abdul Mirza 03/04/2022
 Supervised By :Ankita Jodhani 03/04/2022

Integration File signal 1: autoint1.e
 Integration File signal 2: autoint2.e
 Quant Time: Mar 04 01:08:46 2022
 Quant Method : Z:\pestpcbsrv\HPCHEM1\ECD_D\Method\PD030122.M
 Quant Title : GC Extractables
 QLast Update : Tue Mar 01 06:48:49 2022
 Response via : Initial Calibration
 Integrator: ChemStation

Volume Inj. : 2 µl
 Signal #1 Phase : ZB-MR2 Signal #2 Phase: ZB-MR1
 Signal #1 Info : 30M x 0.32mm x0.2 Signal #2 Info : 30M x 0.32mm x 0.50µm

	Compound	RT#1	RT#2	Resp#1	Resp#2	ng/ml	ng/ml

System Monitoring Compounds							
1)	SA Tetrachlo...	3.450	4.175	20952748	183.6E6	17.874	19.132
28)	SA Decachlor...	8.213	9.373	20024199	100.2E6	17.207	16.905
Target Compounds							
2)	A alpha-BHC	3.890	4.572	86427420	662.3E6	50.368	48.267
3)	MA gamma-BHC...	4.173	4.862	80680709	609.9E6	50.664	49.183
4)	MA Heptachlor	4.471	5.390	75987462	576.3E6	50.335m	50.883
5)	MB Aldrin	4.720	5.703	73185021	584.6E6	46.728	49.444
6)	B beta-BHC	4.424	5.025	34864809	277.2E6	49.689	51.286
7)	B delta-BHC	4.628	5.250	80858065	639.3E6	50.114	51.399m
8)	B Heptachlo...	5.165	6.091	84439839	620.6E6	57.919	57.900
9)	A Endosulfan I	5.504	6.453	69330002	507.5E6	50.837	52.600
10)	B gamma-Chl...	5.391	6.327	95657109	731.1E6	64.257	69.139
11)	B alpha-Chl...	5.450	6.403	105.5E6	943.2E6	71.778	91.512 #
12)	B 4,4'-DDE	5.616	6.552	74734533	526.7E6	54.790	53.877
13)	MA Dieldrin	5.748	6.712	78085632	536.1E6	53.102	52.022
14)	MA Endrin	6.006	6.932	66343277	391.8E6	53.705	50.940
15)	B Endosulfa...	6.278	7.137	68765608	401.4E6	54.048m	48.854
16)	A 4,4'-DDD	6.134	7.041	57426750	477.8E6	48.423	60.713m#
17)	MA 4,4'-DDT	6.375	7.346	61138867	394.7E6	55.441	55.791
18)	B Endrin al...	6.449	7.259	49551341	306.3E6	54.065	50.894m
19)	B Endosulfa...	6.662	7.486	62465740	396.0E6	49.568	50.904
20)	A Methoxychlor	6.926	7.800	32052016	185.2E6	49.395	53.293
21)	B Endrin ke...	7.156	7.960	70342672	404.2E6	47.778	48.149m
22)	Mirex	7.341	8.427	63017658	326.2E6	49.718	50.996

(f)=RT Delta > 1/2 Window (#)=Amounts differ by > 25% (m)=manual int.

Data Path : Z:\pestpcbsrv\HPCHEM1\ECD_D\Data\PD030422\
 Data File : PD068314.D
 Signal(s) : Signal #1: ECD1A.ch Signal #2: ECD2B.ch
 Acq On : 03 Mar 2022 15:26
 Operator : AR\AJ
 Sample : N1751-07MS
 Misc :
 ALS Vial : 14 Sample Multiplier: 1

Instrument :

ECD_D

ClientSampleId :

DUM-14MS

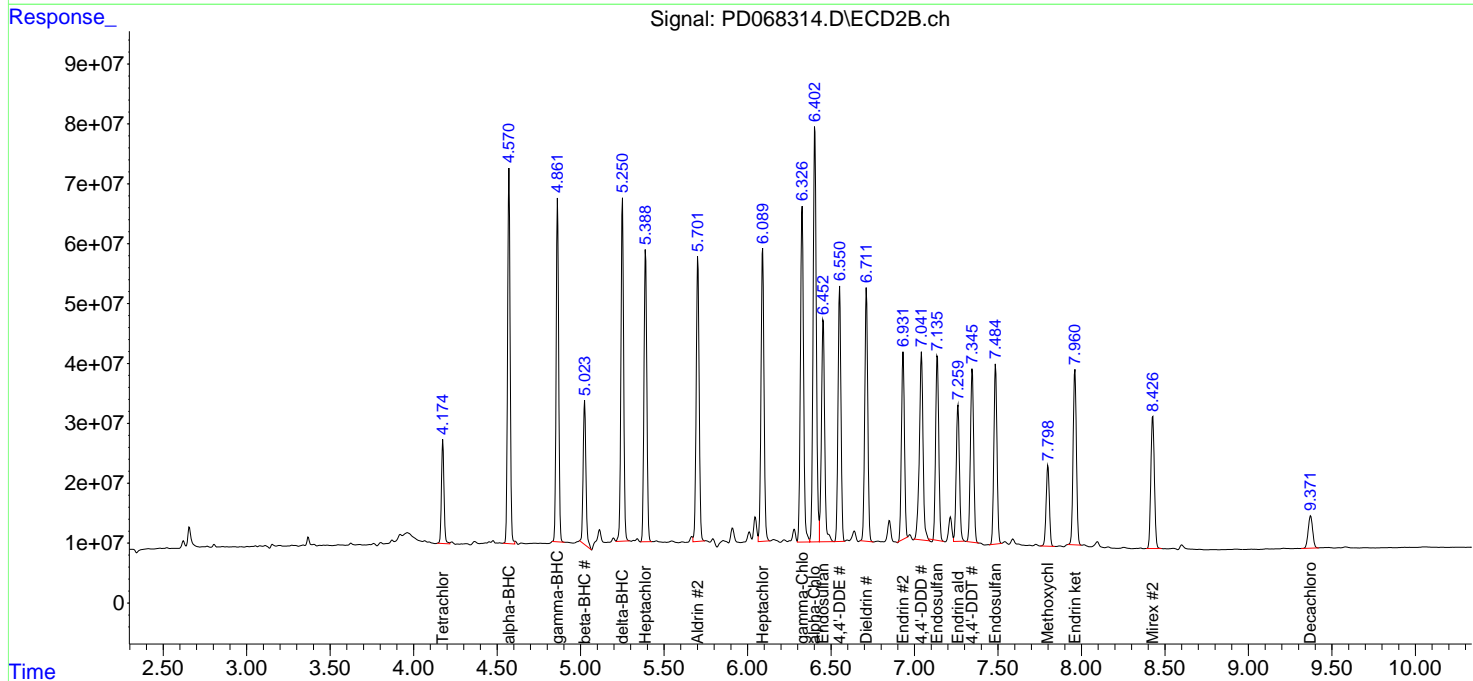
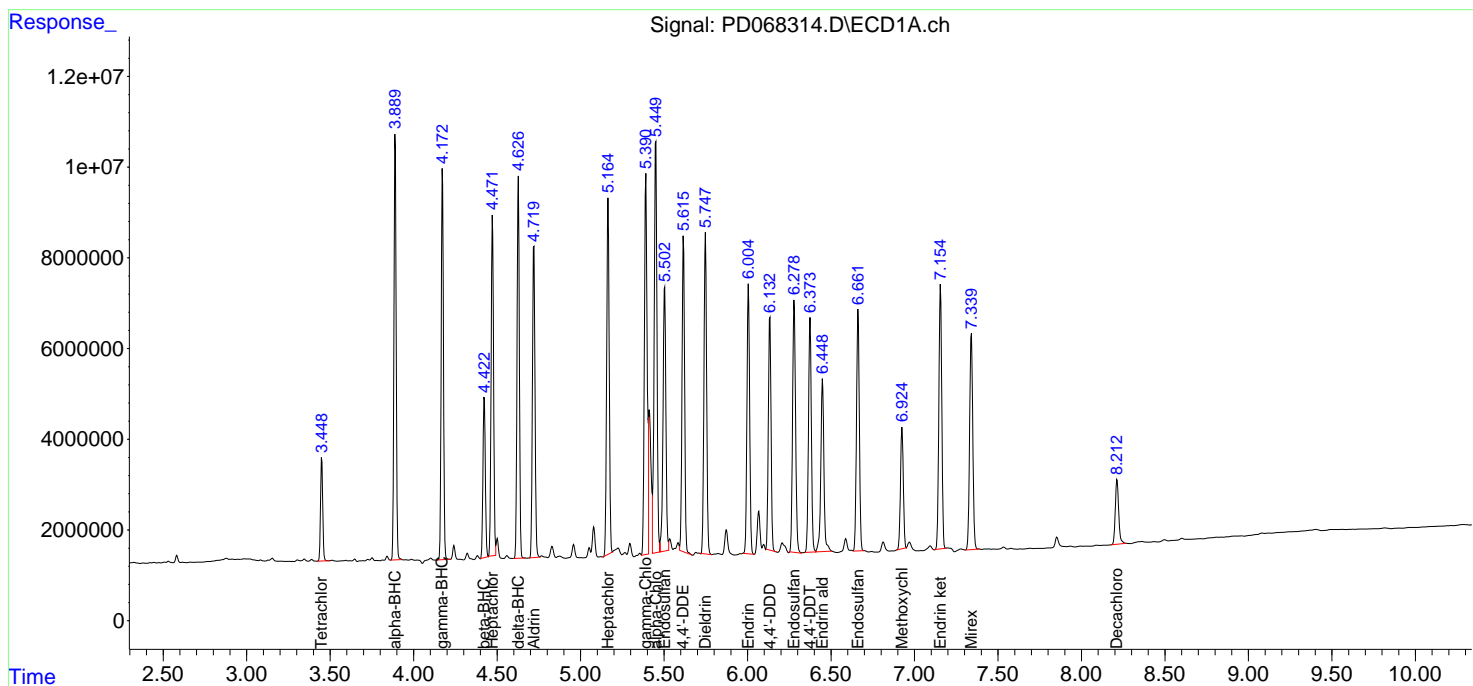
Manual Integrations

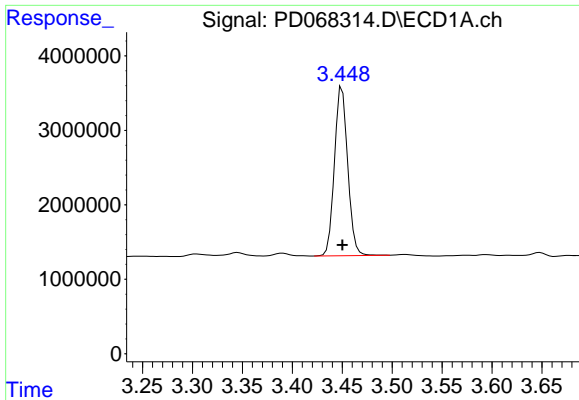
APPROVED

Reviewed By :Abdul Mirza 03/04/2022
 Supervised By :Ankita Jodhani 03/04/2022

Integration File signal 1: autoint1.e
 Integration File signal 2: autoint2.e
 Quant Time: Mar 04 01:08:46 2022
 Quant Method : Z:\pestpcbsrv\HPCHEM1\ECD_D\Method\PD030122.M
 Quant Title : GC Extractables
 QLast Update : Tue Mar 01 06:48:49 2022
 Response via : Initial Calibration
 Integrator: ChemStation

Volume Inj. : 2 µl
 Signal #1 Phase : ZB-MR2 Signal #2 Phase: ZB-MR1
 Signal #1 Info : 30M x 0.32mm x0.2 Signal #2 Info : 30M x 0.32mm x 0.50µm



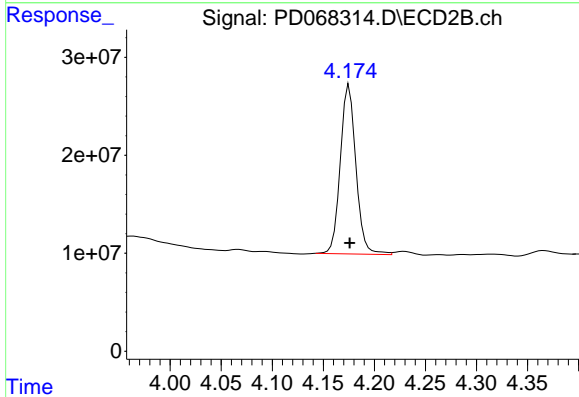


#1 Tetrachloro-m-xylene
 R.T.: 3.450 min
 Delta R.T.: 0.000 min
 Response: 20952748
 Conc: 17.87 ng/ml

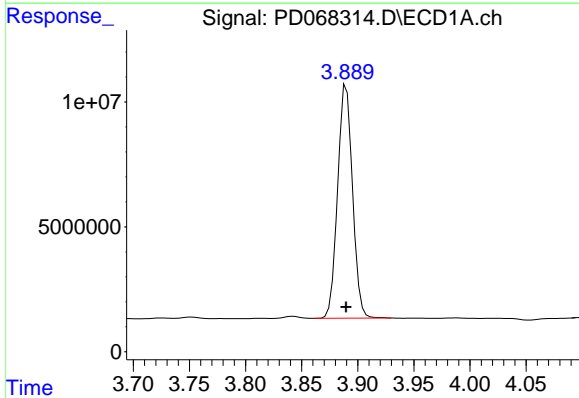
Instrument :
 ECD_D
 ClientSampleId :
 DUM-14MS

Manual Integrations
 APPROVED

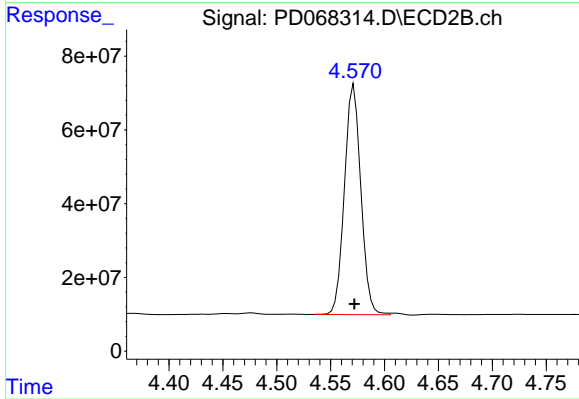
Reviewed By :Abdul Mirza 03/04/2022
 Supervised By :Ankita Jodhani 03/04/2022



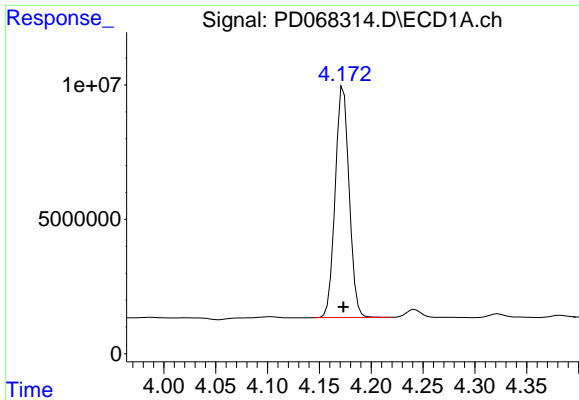
#1 Tetrachloro-m-xylene
 R.T.: 4.175 min
 Delta R.T.: 0.000 min
 Response: 183632115
 Conc: 19.13 ng/ml



#2 alpha-BHC
 R.T.: 3.890 min
 Delta R.T.: 0.000 min
 Response: 86427420
 Conc: 50.37 ng/ml



#2 alpha-BHC
 R.T.: 4.572 min
 Delta R.T.: 0.000 min
 Response: 662293764
 Conc: 48.27 ng/ml

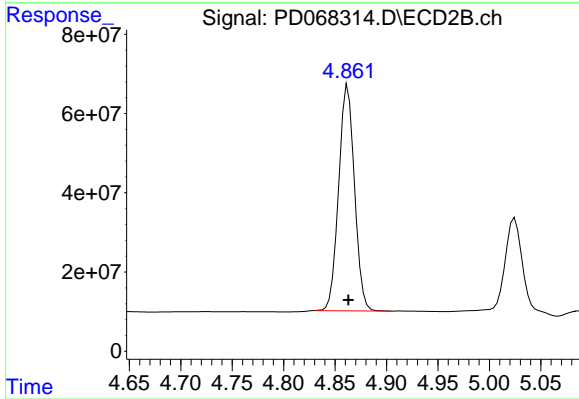


#3 gamma-BHC (Lindane)
 R.T.: 4.173 min
 Delta R.T.: 0.000 min
 Response: 80680709
 Conc: 50.66 ng/ml

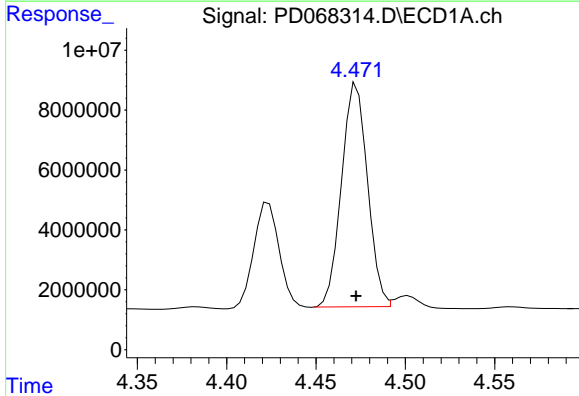
Instrument :
 ECD_D
 ClientSampleId :
 DUM-14MS

Manual Integrations
 APPROVED

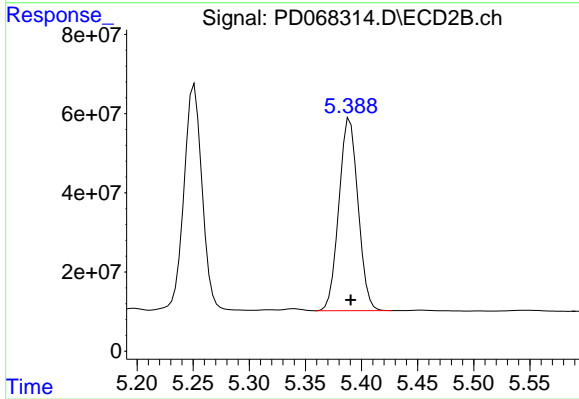
Reviewed By :Abdul Mirza 03/04/2022
 Supervised By :Ankita Jodhani 03/04/2022



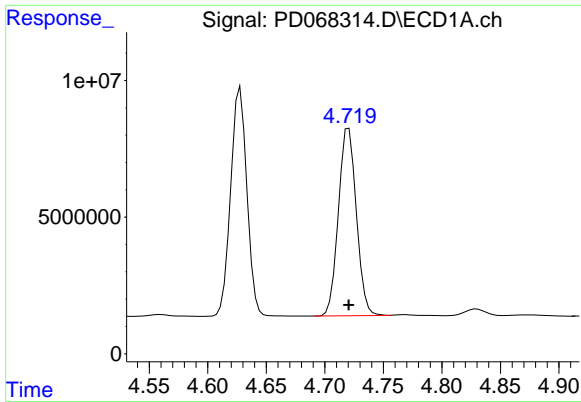
#3 gamma-BHC (Lindane)
 R.T.: 4.862 min
 Delta R.T.: 0.000 min
 Response: 609852270
 Conc: 49.18 ng/ml



#4 Heptachlor
 R.T.: 4.471 min
 Delta R.T.: 0.000 min
 Response: 75987462
 Conc: 50.33 ng/ml m



#4 Heptachlor
 R.T.: 5.390 min
 Delta R.T.: 0.000 min
 Response: 576335483
 Conc: 50.88 ng/ml

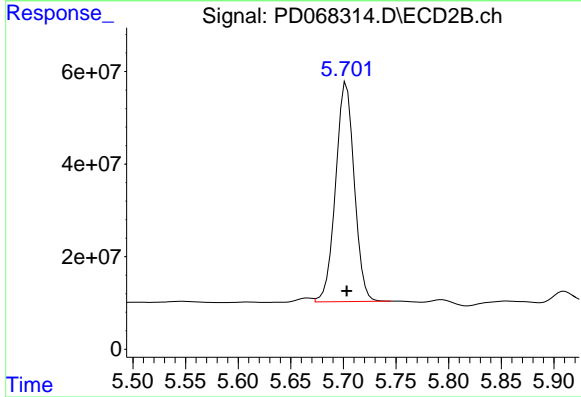


#5 Aldrin
 R.T.: 4.720 min
 Delta R.T.: 0.000 min
 Response: 73185021
 Conc: 46.73 ng/ml

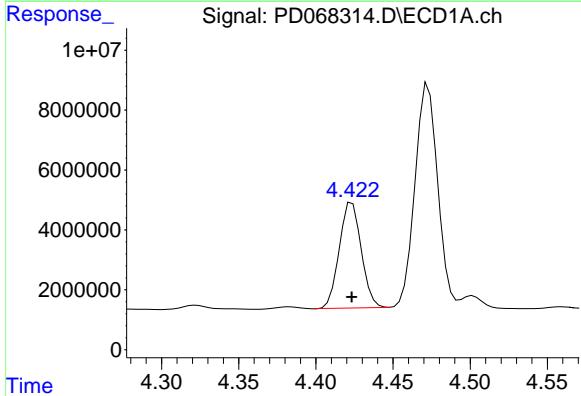
Instrument :
 ECD_D
 ClientSampleId :
 DUM-14MS

Manual Integrations
 APPROVED

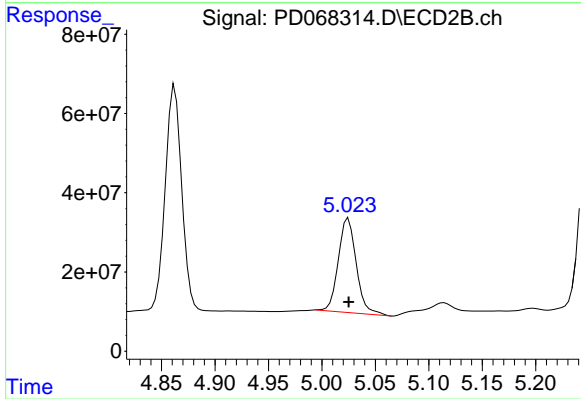
Reviewed By :Abdul Mirza 03/04/2022
 Supervised By :Ankita Jodhani 03/04/2022



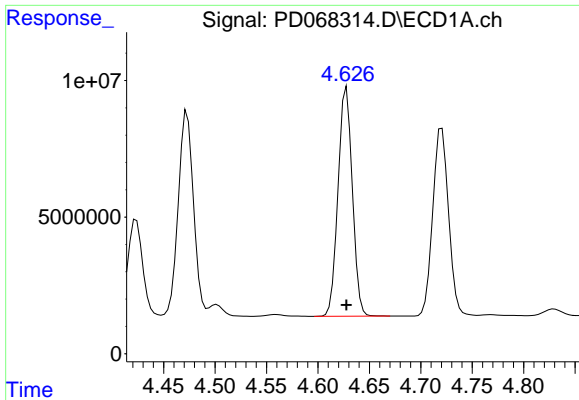
#5 Aldrin
 R.T.: 5.703 min
 Delta R.T.: 0.000 min
 Response: 584609532
 Conc: 49.44 ng/ml



#6 beta-BHC
 R.T.: 4.424 min
 Delta R.T.: 0.000 min
 Response: 34864809
 Conc: 49.69 ng/ml



#6 beta-BHC
 R.T.: 5.025 min
 Delta R.T.: 0.000 min
 Response: 277225242
 Conc: 51.29 ng/ml



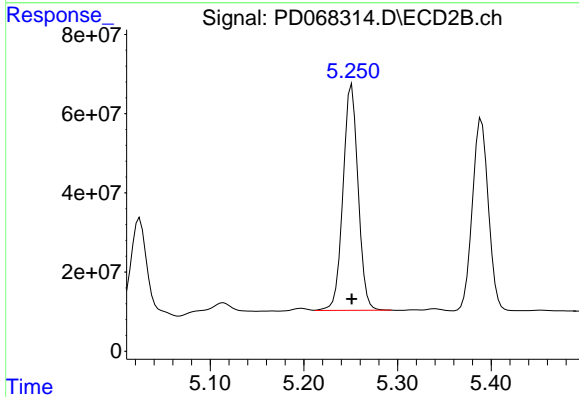
#7 delta-BHC

R.T.: 4.628 min
 Delta R.T.: 0.000 min
 Response: 80858065
 Conc: 50.11 ng/ml

Instrument :
 ECD_D
 ClientSampleId :
 DUM-14MS

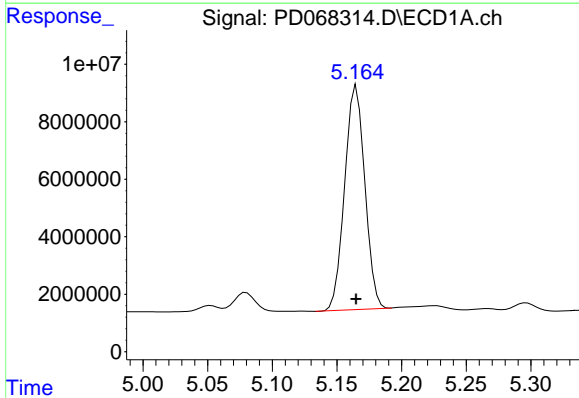
Manual Integrations
 APPROVED

Reviewed By :Abdul Mirza 03/04/2022
 Supervised By :Ankita Jodhani 03/04/2022



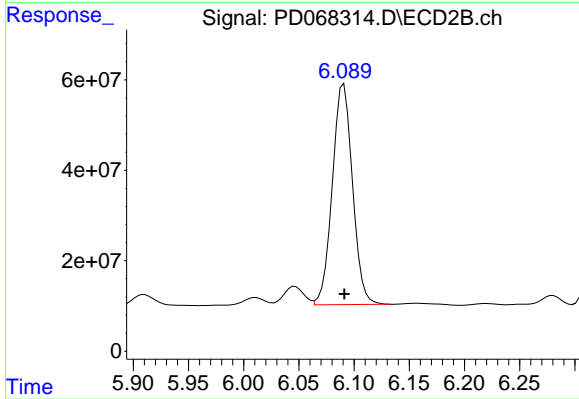
#7 delta-BHC

R.T.: 5.250 min
 Delta R.T.: -0.001 min
 Response: 639310147
 Conc: 51.40 ng/ml m



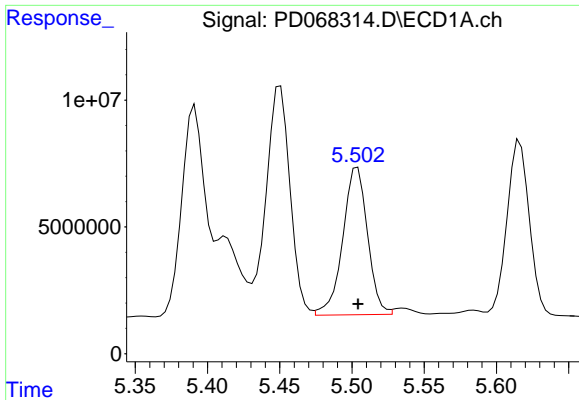
#8 Heptachlor epoxide

R.T.: 5.165 min
 Delta R.T.: 0.000 min
 Response: 84439839
 Conc: 57.92 ng/ml



#8 Heptachlor epoxide

R.T.: 6.091 min
 Delta R.T.: 0.000 min
 Response: 620552581
 Conc: 57.90 ng/ml



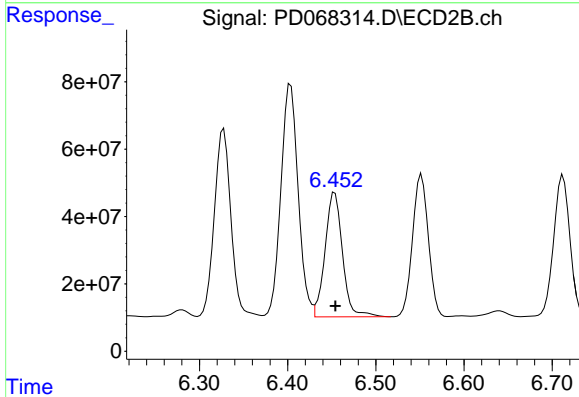
#9 Endosulfan I

R.T.: 5.504 min
 Delta R.T.: 0.000 min
 Response: 69330002
 Conc: 50.84 ng/ml

Instrument :
 ECD_D
 ClientSampleId :
 DUM-14MS

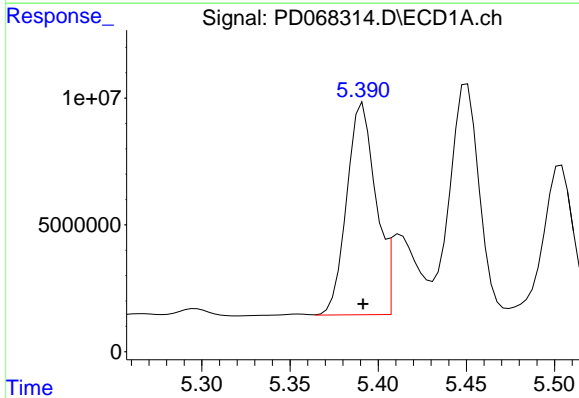
Manual Integrations
 APPROVED

Reviewed By :Abdul Mirza 03/04/2022
 Supervised By :Ankita Jodhani 03/04/2022



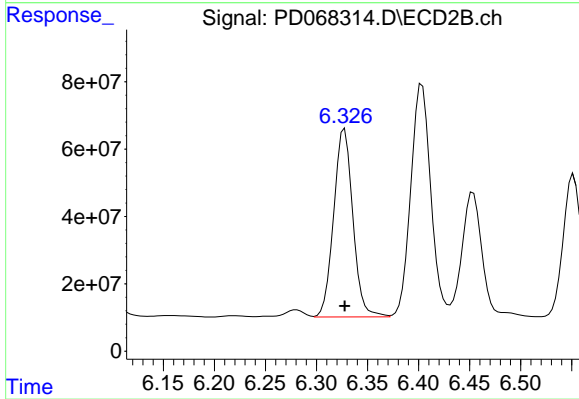
#9 Endosulfan I

R.T.: 6.453 min
 Delta R.T.: 0.000 min
 Response: 507549461
 Conc: 52.60 ng/ml



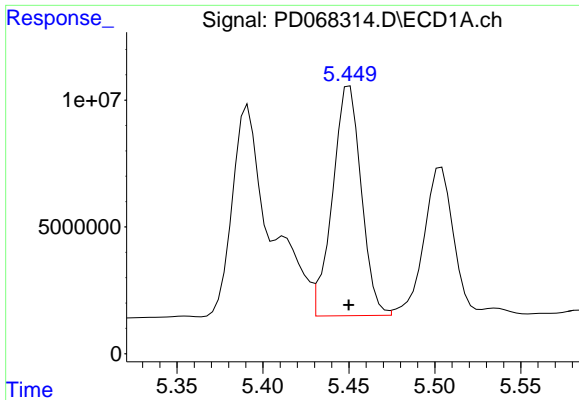
#10 gamma-Chlordane

R.T.: 5.391 min
 Delta R.T.: 0.000 min
 Response: 95657109
 Conc: 64.26 ng/ml



#10 gamma-Chlordane

R.T.: 6.327 min
 Delta R.T.: 0.000 min
 Response: 731075176
 Conc: 69.14 ng/ml



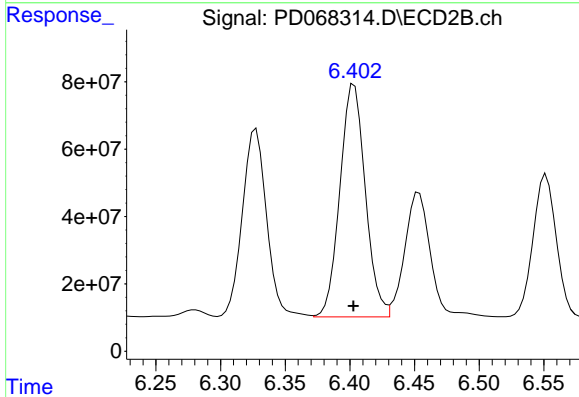
#11 alpha-Chlordane

R.T.: 5.450 min
 Delta R.T.: 0.000 min
 Response: 105472085
 Conc: 71.78 ng/ml

Instrument :
 ECD_D
 ClientSampleId :
 DUM-14MS

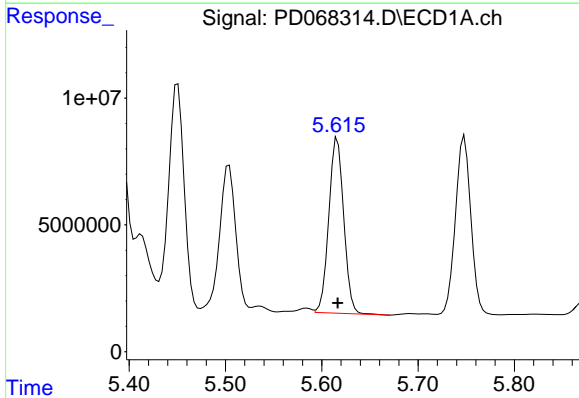
Manual Integrations
 APPROVED

Reviewed By :Abdul Mirza 03/04/2022
 Supervised By :Ankita Jodhani 03/04/2022



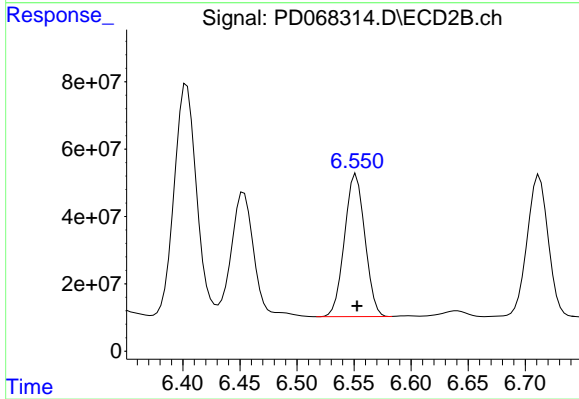
#11 alpha-Chlordane

R.T.: 6.403 min
 Delta R.T.: 0.000 min
 Response: 943246362
 Conc: 91.51 ng/ml



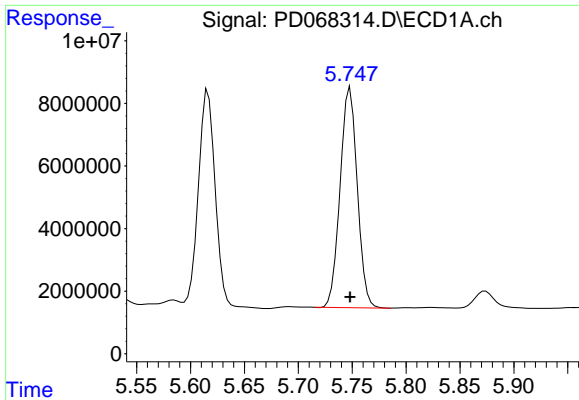
#12 4,4'-DDE

R.T.: 5.616 min
 Delta R.T.: 0.000 min
 Response: 74734533
 Conc: 54.79 ng/ml



#12 4,4'-DDE

R.T.: 6.552 min
 Delta R.T.: 0.000 min
 Response: 526721351
 Conc: 53.88 ng/ml

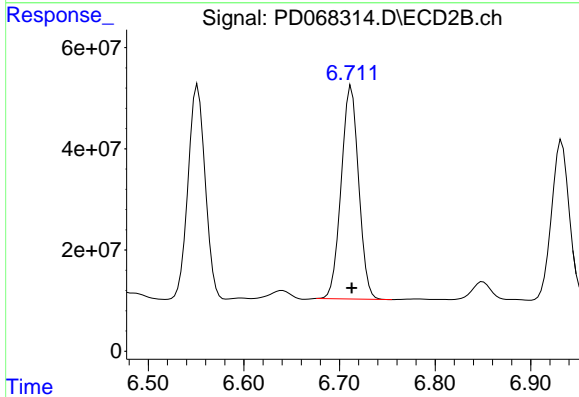


#13 Dieldrin

R.T.: 5.748 min
 Delta R.T.: 0.000 min
 Response: 78085632
 Conc: 53.10 ng/ml

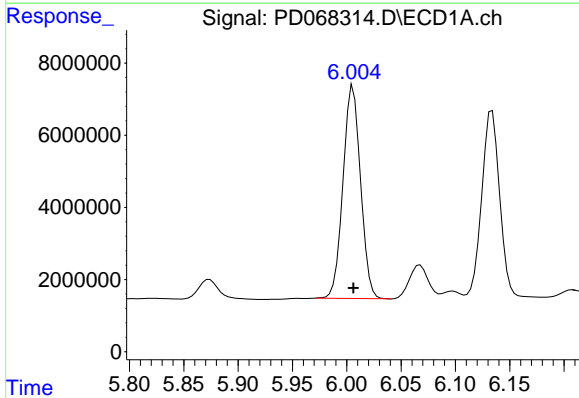
Instrument : ECD_D
 Client Sample Id : DUM-14MS

Manual Integrations
APPROVED
 Reviewed By :Abdul Mirza 03/04/2022
 Supervised By :Ankita Jodhani 03/04/2022



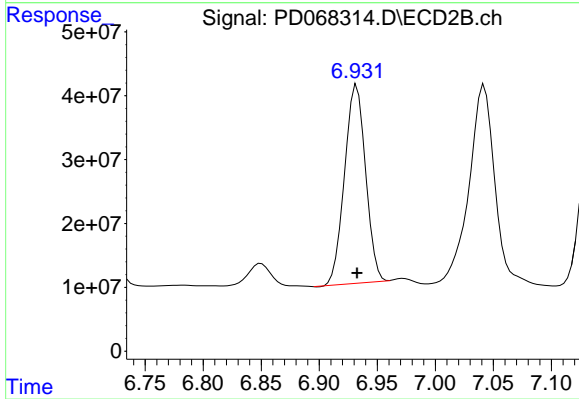
#13 Dieldrin

R.T.: 6.712 min
 Delta R.T.: 0.000 min
 Response: 536096122
 Conc: 52.02 ng/ml



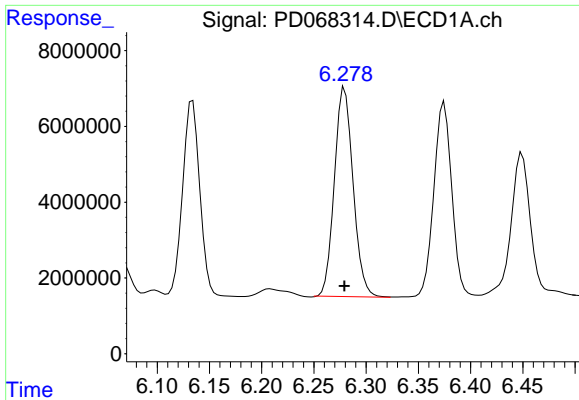
#14 Endrin

R.T.: 6.006 min
 Delta R.T.: 0.000 min
 Response: 66343277
 Conc: 53.70 ng/ml



#14 Endrin

R.T.: 6.932 min
 Delta R.T.: 0.000 min
 Response: 391758804
 Conc: 50.94 ng/ml



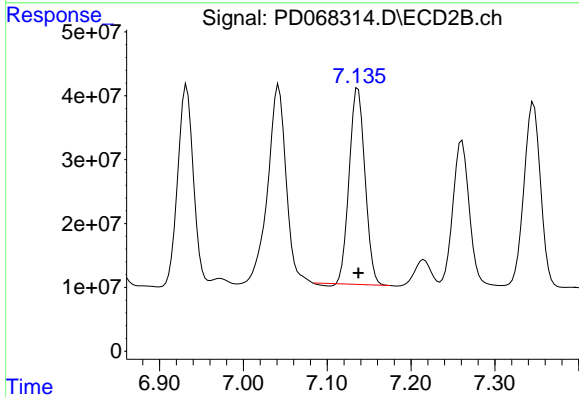
#15 Endosulfan II

R.T.: 6.278 min
 Delta R.T.: -0.001 min
 Response: 68765608
 Conc: 54.05 ng/ml

Instrument :
 ECD_D
 ClientSampleId :
 DUM-14MS

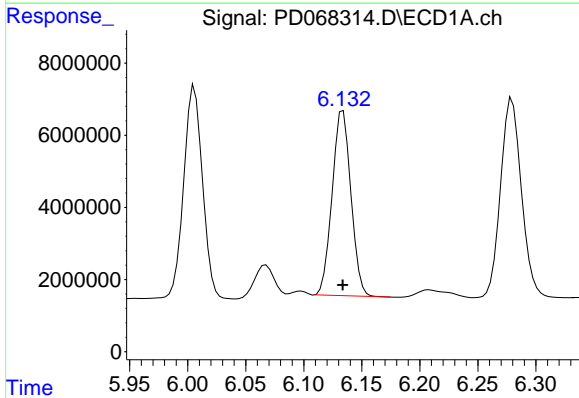
Manual Integrations
 APPROVED

Reviewed By :Abdul Mirza 03/04/2022
 Supervised By :Ankita Jodhani 03/04/2022



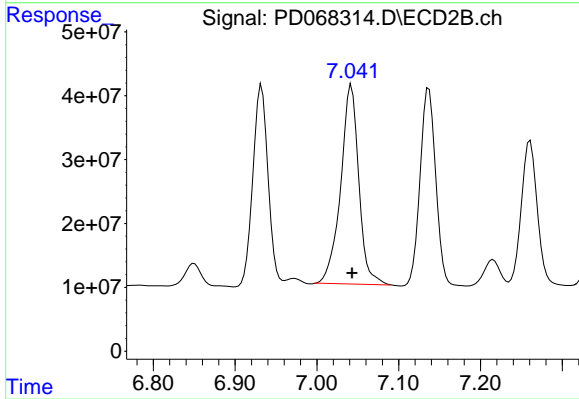
#15 Endosulfan II

R.T.: 7.137 min
 Delta R.T.: 0.000 min
 Response: 401437272
 Conc: 48.85 ng/ml



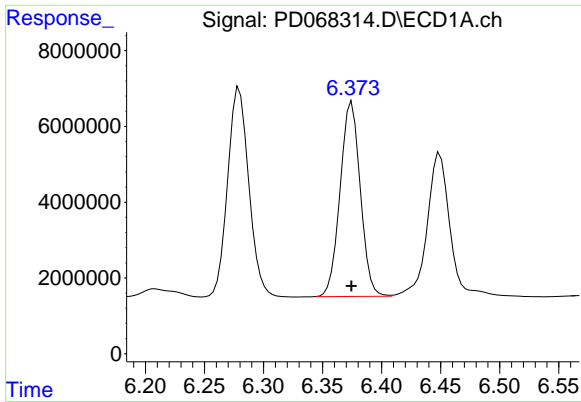
#16 4,4'-DDD

R.T.: 6.134 min
 Delta R.T.: 0.000 min
 Response: 57426750
 Conc: 48.42 ng/ml



#16 4,4'-DDD

R.T.: 7.041 min
 Delta R.T.: -0.002 min
 Response: 477814791
 Conc: 60.71 ng/ml m



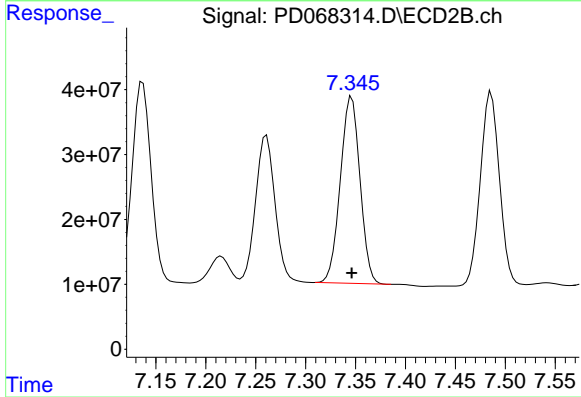
#17 4,4'-DDT

R.T.: 6.375 min
 Delta R.T.: 0.000 min
 Response: 61138867
 Conc: 55.44 ng/ml

Instrument :
 ECD_D
 ClientSampleId :
 DUM-14MS

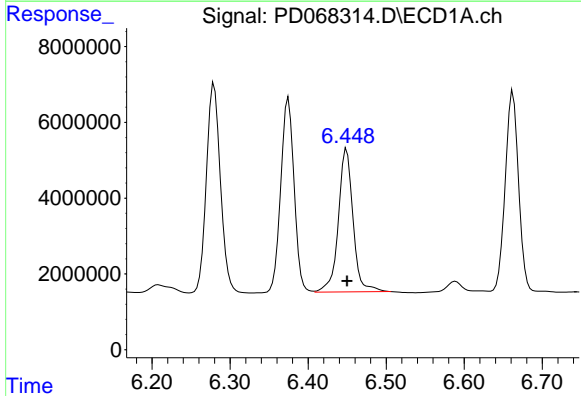
Manual Integrations
 APPROVED

Reviewed By :Abdul Mirza 03/04/2022
 Supervised By :Ankita Jodhani 03/04/2022



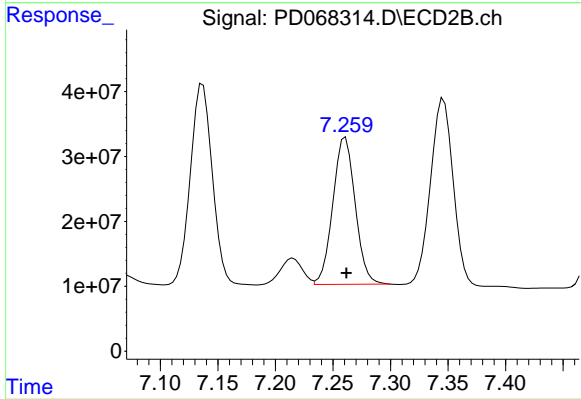
#17 4,4'-DDT

R.T.: 7.346 min
 Delta R.T.: 0.000 min
 Response: 394745743
 Conc: 55.79 ng/ml



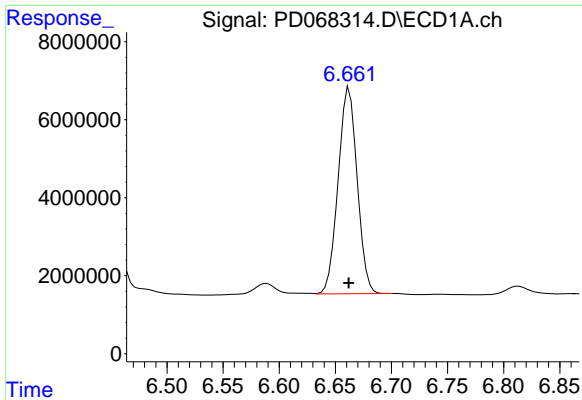
#18 Endrin aldehyde

R.T.: 6.449 min
 Delta R.T.: 0.000 min
 Response: 49551341
 Conc: 54.07 ng/ml



#18 Endrin aldehyde

R.T.: 7.259 min
 Delta R.T.: -0.002 min
 Response: 306256108
 Conc: 50.89 ng/ml m

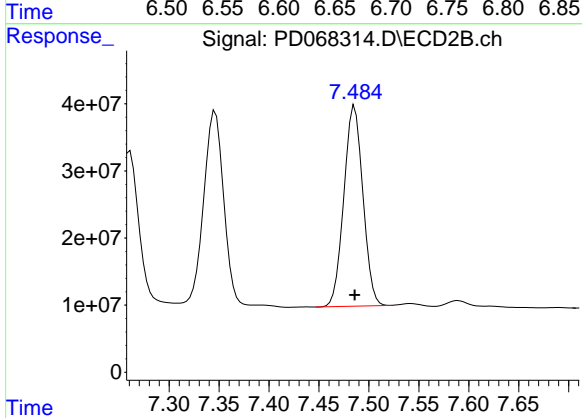


#19 Endosulfan Sulfate
 R.T.: 6.662 min
 Delta R.T.: 0.000 min
 Response: 62465740
 Conc: 49.57 ng/ml

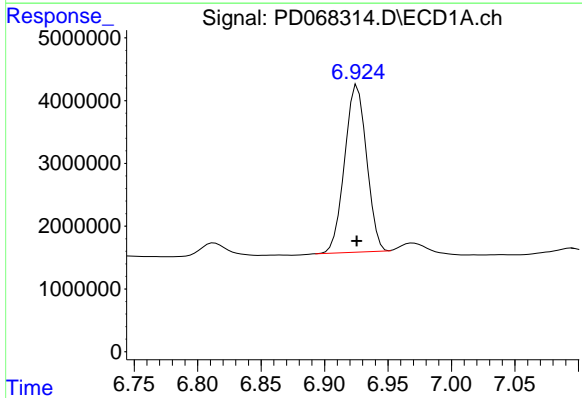
Instrument :
 ECD_D
 ClientSampleId :
 DUM-14MS

Manual Integrations
APPROVED

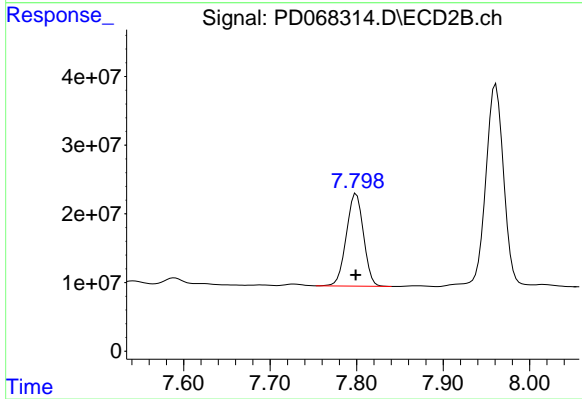
Reviewed By :Abdul Mirza 03/04/2022
 Supervised By :Ankita Jodhani 03/04/2022



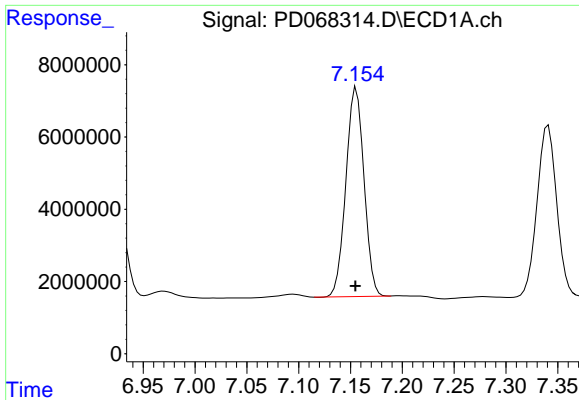
#19 Endosulfan Sulfate
 R.T.: 7.486 min
 Delta R.T.: 0.000 min
 Response: 396045153
 Conc: 50.90 ng/ml



#20 Methoxychlor
 R.T.: 6.926 min
 Delta R.T.: 0.000 min
 Response: 32052016
 Conc: 49.39 ng/ml



#20 Methoxychlor
 R.T.: 7.800 min
 Delta R.T.: 0.000 min
 Response: 185162926
 Conc: 53.29 ng/ml

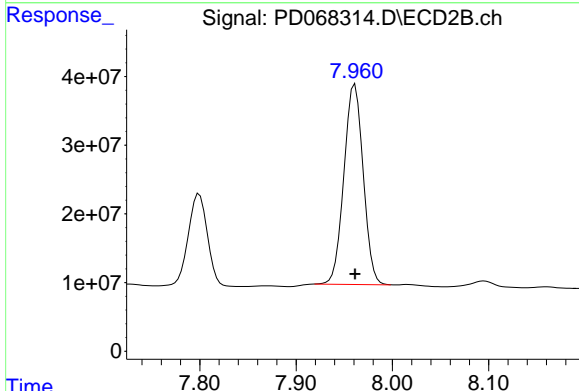


#21 Endrin ketone

R.T.: 7.156 min
 Delta R.T.: 0.000 min
 Response: 70342672
 Conc: 47.78 ng/ml

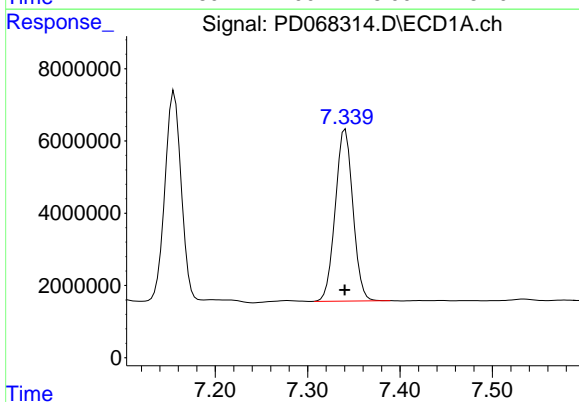
Instrument : ECD_D
 ClientSampleId : DUM-14MS

Manual Integrations
APPROVED
 Reviewed By :Abdul Mirza 03/04/2022
 Supervised By :Ankita Jodhani 03/04/2022



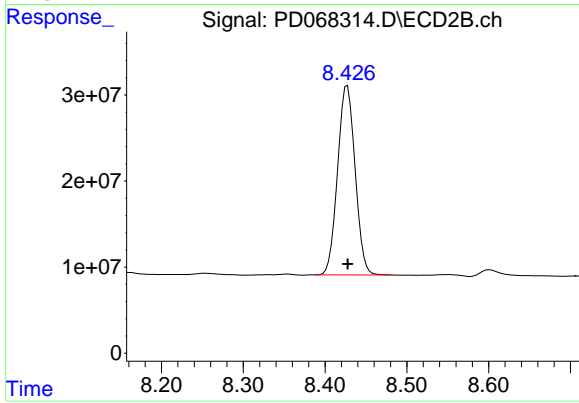
#21 Endrin ketone

R.T.: 7.960 min
 Delta R.T.: -0.001 min
 Response: 404197017
 Conc: 48.15 ng/ml m



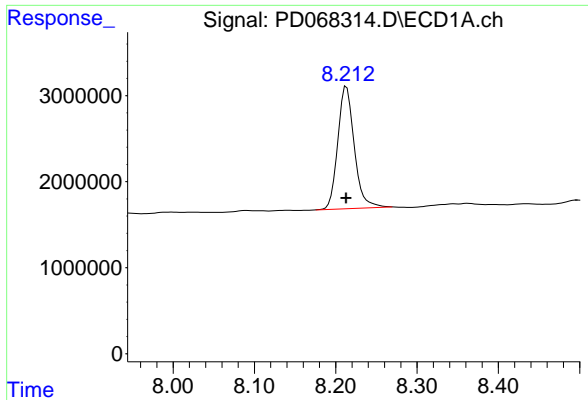
#22 Mirex

R.T.: 7.341 min
 Delta R.T.: 0.000 min
 Response: 63017658
 Conc: 49.72 ng/ml



#22 Mirex

R.T.: 8.427 min
 Delta R.T.: 0.000 min
 Response: 326158915
 Conc: 51.00 ng/ml

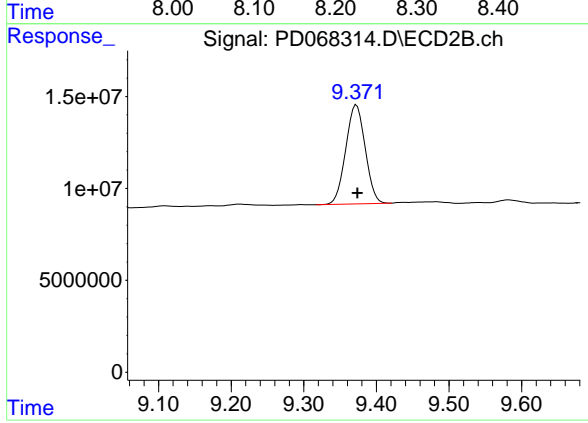


#28 Decachlorobiphenyl
R.T.: 8.213 min
Delta R.T.: 0.000 min
Response: 20024199
Conc: 17.21 ng/ml

Instrument : ECD_D
ClientSampleId : DUM-14MS

Manual Integrations
APPROVED

Reviewed By :Abdul Mirza 03/04/2022
Supervised By :Ankita Jodhani 03/04/2022



#28 Decachlorobiphenyl
R.T.: 9.373 min
Delta R.T.: 0.000 min
Response: 100224153
Conc: 16.90 ng/ml