

Data Path : Z:\pestpcbsrv\HPCHEM1\ECD_D\Data\PD030422\
 Data File : PD068322.D
 Signal(s) : Signal #1: ECD1A.ch Signal #2: ECD2B.ch
 Acq On : 03 Mar 2022 17:51
 Operator : AR\AJ
 Sample : N1739-01
 Misc :
 ALS Vial : 18 Sample Multiplier: 1

Instrument :
 ECD_D
ClientSampleId :
 BI-WEEKLY-DECANT

Manual Integrations
APPROVED

Reviewed By :Abdul Mirza 03/07/2022
 Supervised By :Ankita Jodhani 03/07/2022

Integration File signal 1: autoint1.e
 Integration File signal 2: autoint2.e
 Quant Time: Mar 04 01:11:17 2022
 Quant Method : Z:\pestpcbsrv\HPCHEM1\ECD_D\Method\PD030122.M
 Quant Title : GC Extractables
 QLast Update : Tue Mar 01 06:48:49 2022
 Response via : Initial Calibration
 Integrator: ChemStation

Volume Inj. : 2 µl
 Signal #1 Phase : ZB-MR2 Signal #2 Phase: ZB-MR1
 Signal #1 Info : 30M x 0.32mm x0.2 Signal #2 Info : 30M x 0.32mm x 0.50µm

Compound	RT#1	RT#2	Resp#1	Resp#2	ng/ml	ng/ml

System Monitoring Compounds						
1) SA Tetrachlo...	3.450	4.175	18037245	108.8E6	15.387	11.332m#
28) SA Decachlor...	8.206	9.370	23260513	66947098	19.988	11.292m#
Target Compounds						
10) B gamma-Chl...	5.395	6.325	11375106	53354098	7.641m	5.046m#

(f)=RT Delta > 1/2 Window (#)=Amounts differ by > 25% (m)=manual int.

Data Path : Z:\pestpcbsrv\HPCHEM1\ECD_D\Data\PD030422\
 Data File : PD068322.D
 Signal(s) : Signal #1: ECD1A.ch Signal #2: ECD2B.ch
 Acq On : 03 Mar 2022 17:51
 Operator : AR\AJ
 Sample : N1739-01
 Misc :
 ALS Vial : 18 Sample Multiplier: 1

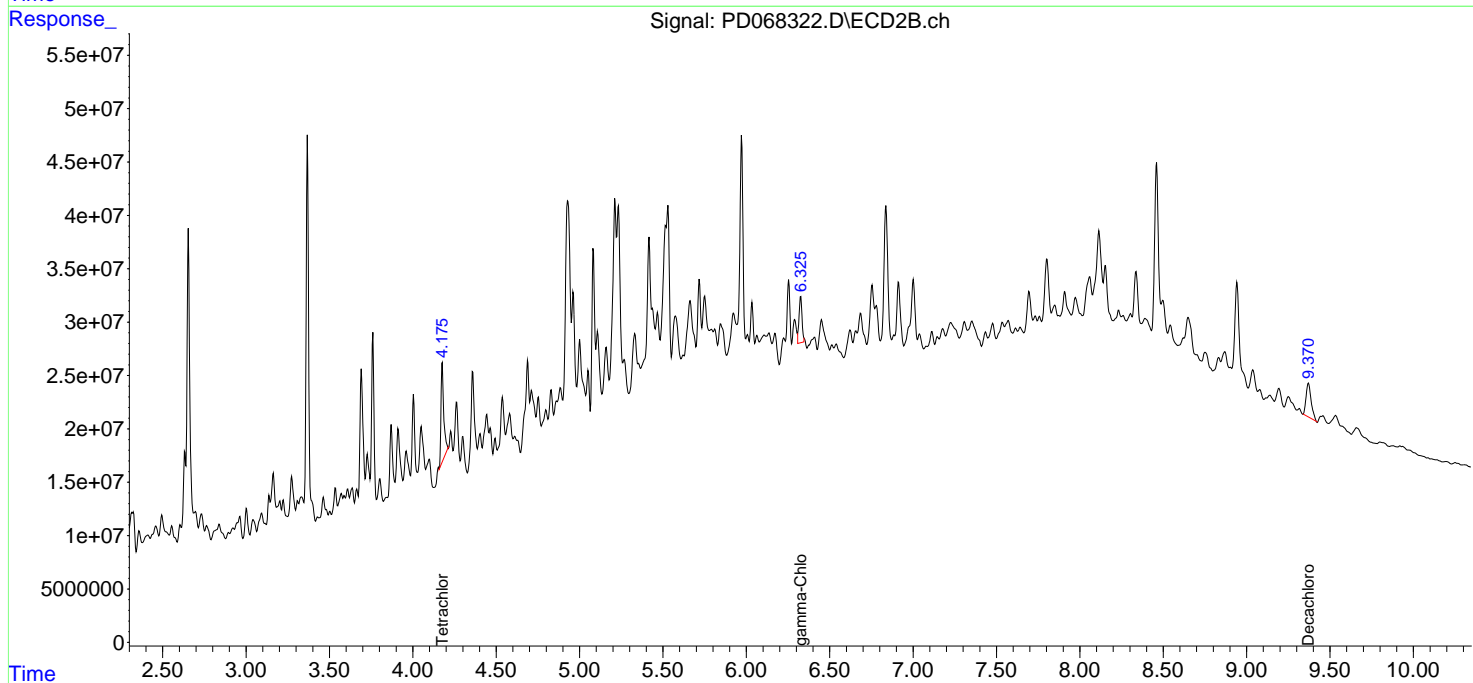
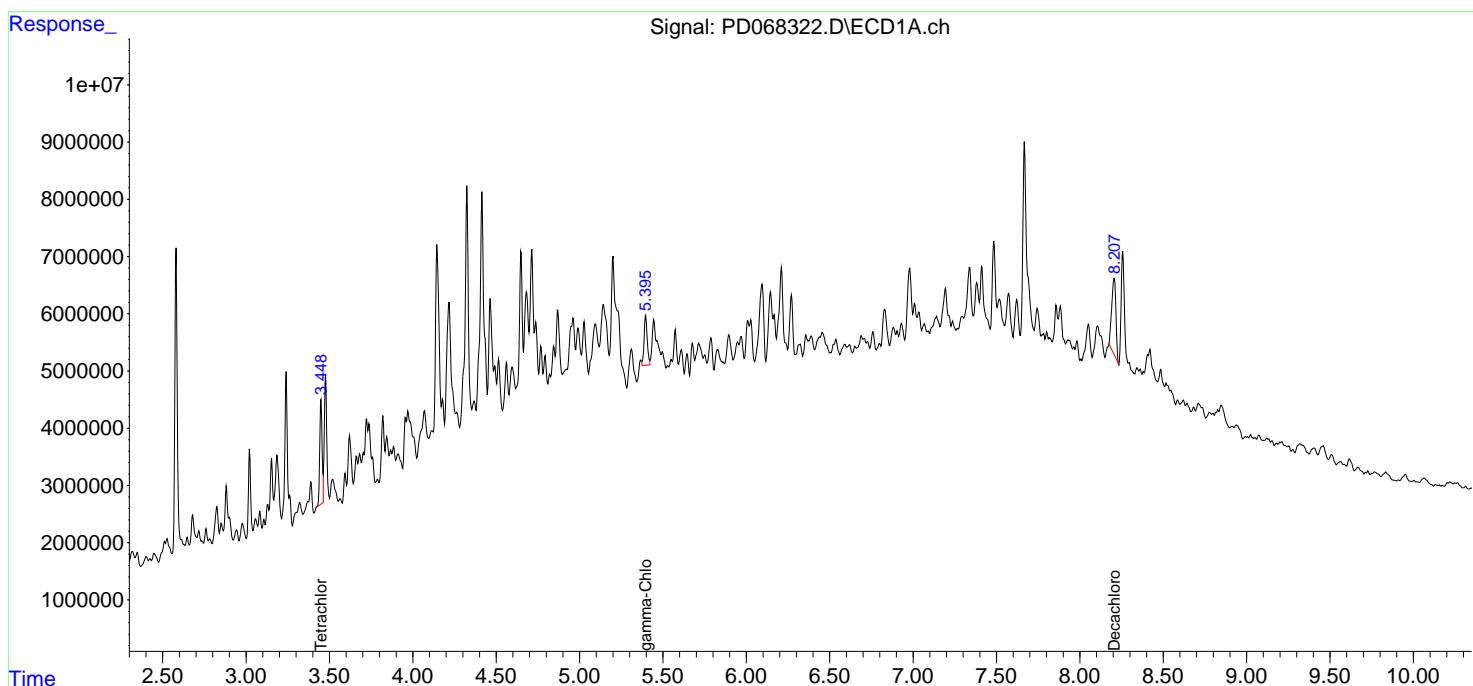
Instrument :
 ECD_D
ClientSampleId :
 BI-WEEKLY-DECANT

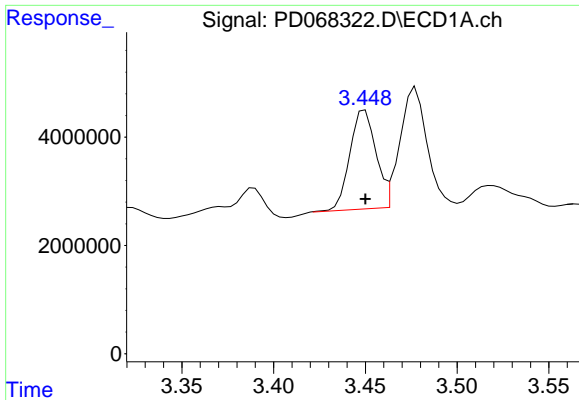
Manual Integrations
APPROVED

Reviewed By :Abdul Mirza 03/07/2022
 Supervised By :Ankita Jodhani 03/07/2022

Integration File signal 1: autoint1.e
 Integration File signal 2: autoint2.e
 Quant Time: Mar 04 01:11:17 2022
 Quant Method : Z:\pestpcbsrv\HPCHEM1\ECD_D\Method\PD030122.M
 Quant Title : GC Extractables
 QLast Update : Tue Mar 01 06:48:49 2022
 Response via : Initial Calibration
 Integrator: ChemStation

Volume Inj. : 2 µl
 Signal #1 Phase : ZB-MR2 Signal #2 Phase: ZB-MR1
 Signal #1 Info : 30M x 0.32mm x0.2 Signal #2 Info : 30M x 0.32mm x 0.50µm





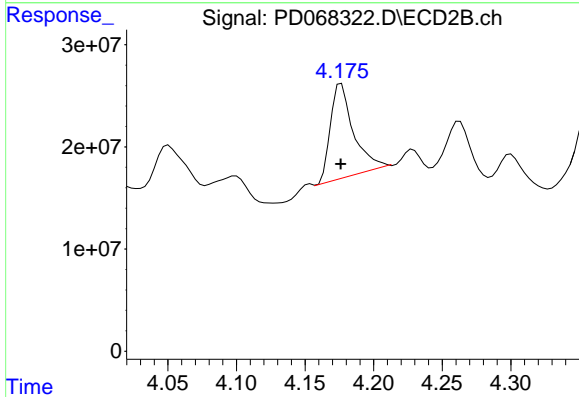
#1 Tetrachloro-m-xylene

R.T.: 3.450 min
 Delta R.T.: 0.000 min
 Response: 18037245
 Conc: 15.39 ng/ml

Instrument :
 ECD_D
 ClientSampleId :
 BI-WEEKLY-DECANT

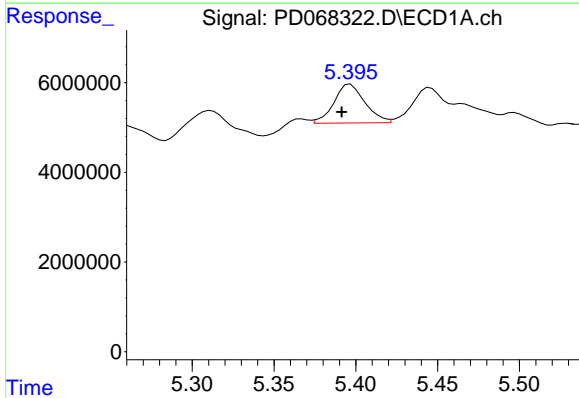
Manual Integrations
 APPROVED

Reviewed By :Abdul Mirza 03/07/2022
 Supervised By :Ankita Jodhani 03/07/2022



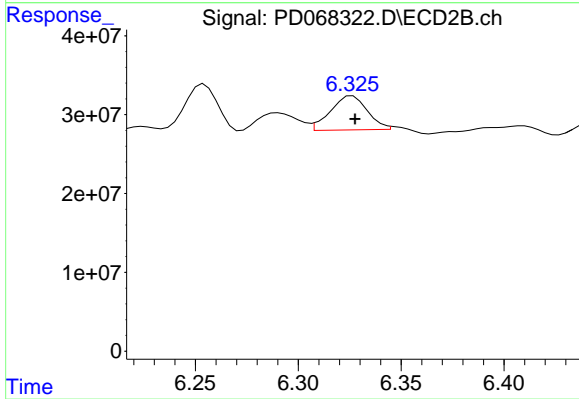
#1 Tetrachloro-m-xylene

R.T.: 4.175 min
 Delta R.T.: -0.001 min
 Response: 108766731
 Conc: 11.33 ng/ml m



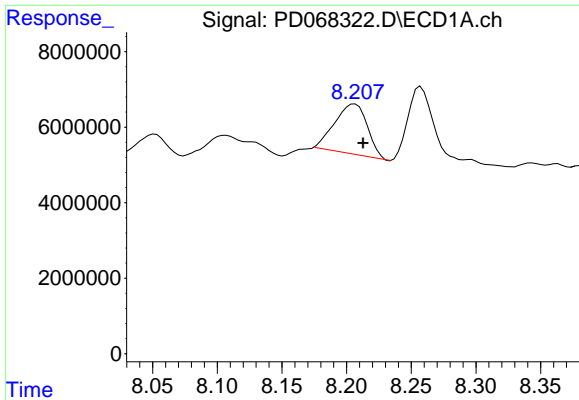
#10 gamma-Chlordane

R.T.: 5.395 min
 Delta R.T.: 0.004 min
 Response: 11375106
 Conc: 7.64 ng/ml m



#10 gamma-Chlordane

R.T.: 6.325 min
 Delta R.T.: -0.003 min
 Response: 53354098
 Conc: 5.05 ng/ml m



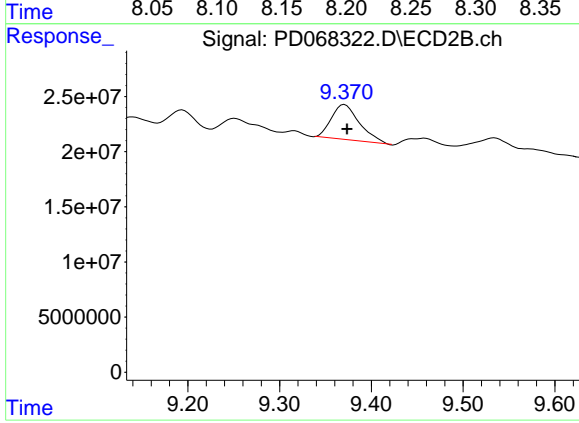
#28 Decachlorobiphenyl

R.T.: 8.206 min
 Delta R.T.: -0.006 min
 Response: 23260513
 Conc: 19.99 ng/ml

Instrument :
 ECD_D
 ClientSampleId :
 BI-WEEKLY-DECANT

Manual Integrations
 APPROVED

Reviewed By :Abdul Mirza 03/07/2022
 Supervised By :Ankita Jodhani 03/07/2022



#28 Decachlorobiphenyl

R.T.: 9.370 min
 Delta R.T.: -0.004 min
 Response: 66947098
 Conc: 11.29 ng/ml m