

Data Path : Z:\pestpcbsrv\HPCHEM1\ECD\_D\Data\PD030422\  
 Data File : PD068329.D  
 Signal(s) : Signal #1: ECD1A.ch Signal #2: ECD2B.ch  
 Acq On : 03 Mar 2022 19:29  
 Operator : AR\AJ  
 Sample : PSTDCCC050  
 Misc :  
 ALS Vial : 4 Sample Multiplier: 1

Instrument :  
 ECD\_D  
 ClientSampleId :  
 PSTDCCC050

Integration File signal 1: autoint1.e  
 Integration File signal 2: autoint2.e  
 Quant Time: Mar 04 01:13:45 2022  
 Quant Method : Z:\pestpcbsrv\HPCHEM1\ECD\_D\Method\PD030122.M  
 Quant Title : GC Extractables  
 QLast Update : Tue Mar 01 06:48:49 2022  
 Response via : Initial Calibration  
 Integrator: ChemStation

Volume Inj. : 2 µl  
 Signal #1 Phase : ZB-MR2 Signal #2 Phase: ZB-MR1  
 Signal #1 Info : 30M x 0.32mm x0.2 Signal #2 Info : 30M x 0.32mm x 0.50µm

Compound	RT#1	RT#2	Resp#1	Resp#2	ng/ml	ng/ml
-----						
System Monitoring Compounds						
1) SA Tetrachlo...	3.449	4.175	58311886	440.5E6	49.743	45.894
28) SA Decachlor...	8.211	9.371	59857139	285.1E6	51.436	48.095
Target Compounds						
2) A alpha-BHC	3.889	4.571	89757533	648.6E6	52.309	47.267
3) MA gamma-BHC...	4.173	4.862	82848273	588.3E6	52.026	47.442
4) MA Heptachlor	4.471	5.389	79586496	550.2E6	52.719	48.573
5) MB Aldrin	4.719	5.702	81258996	553.9E6	51.883	46.843
6) B beta-BHC	4.422	5.024	35730229	253.8E6	50.923	46.956
7) B delta-BHC	4.627	5.250	84858697	589.2E6	52.593	47.371
8) B Heptachlo...	5.163	6.090	74843961	499.4E6	51.337	46.592
9) A Endosulfan I	5.502	6.453	69726815	453.3E6	51.128	46.978
10) B gamma-Chl...	5.389	6.326	75936350	498.1E6	51.010	47.109
11) B alpha-Chl...	5.448	6.402	75000992	485.0E6	51.041	47.052
12) B 4,4'-DDE	5.615	6.551	71157735	460.1E6	52.168	47.062
13) MA Dieldrin	5.746	6.711	75932361	483.9E6	51.638	46.956
14) MA Endrin	6.004	6.931	65904571	364.4E6	53.350	47.389
15) B Endosulfa...	6.278	7.136	65676068	386.2E6	51.619	46.996
16) A 4,4'-DDD	6.132	7.042	61350244	371.1E6	51.732	47.158
17) MA 4,4'-DDT	6.372	7.345	60192546	357.0E6	54.583	50.456
18) B Endrin al...	6.447	7.260	45929607	277.3E6	50.113	46.088
19) B Endosulfa...	6.661	7.484	65319793	369.7E6	51.833	47.520
20) A Methoxychlor	6.923	7.798	34828065	179.1E6	53.673	51.536
21) B Endrin ke...	7.153	7.960	75696781	395.3E6	51.415	47.089
22) Mirex	7.338	8.426	62533919	295.2E6	49.336	46.149
-----						

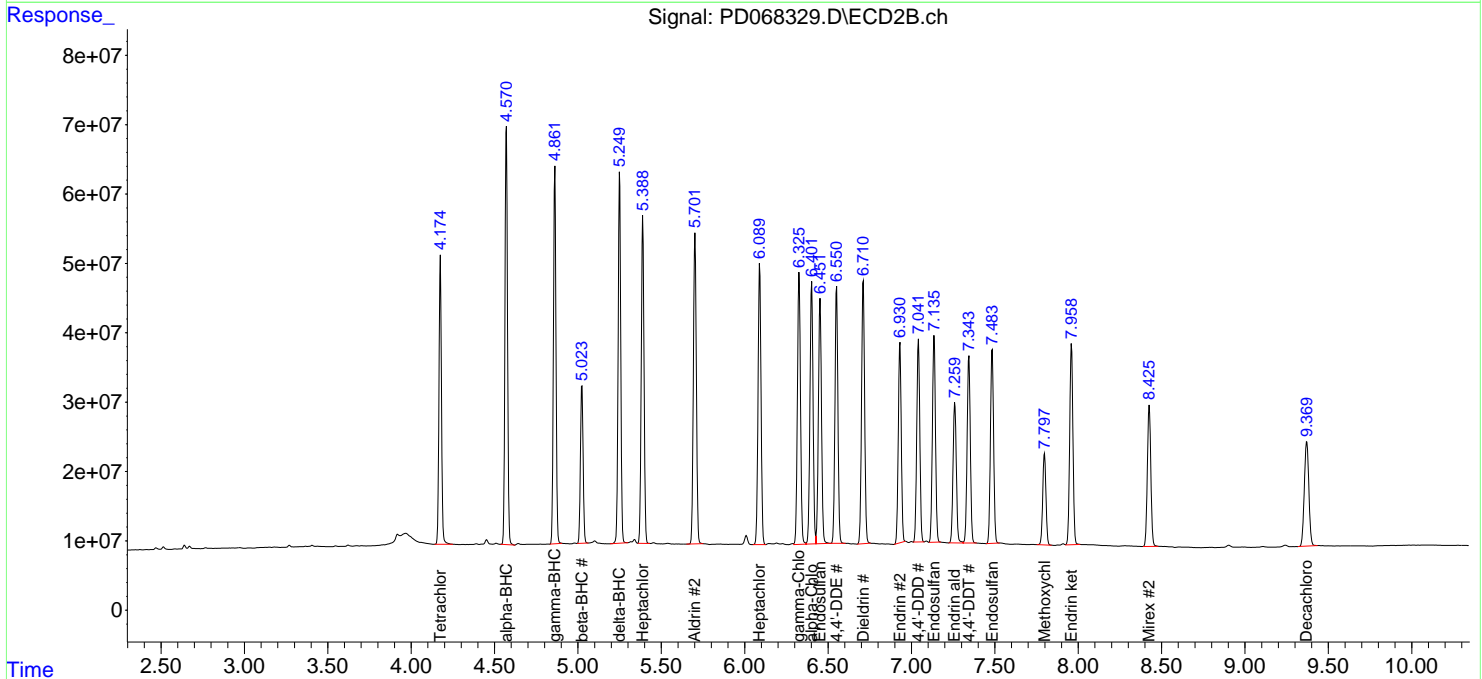
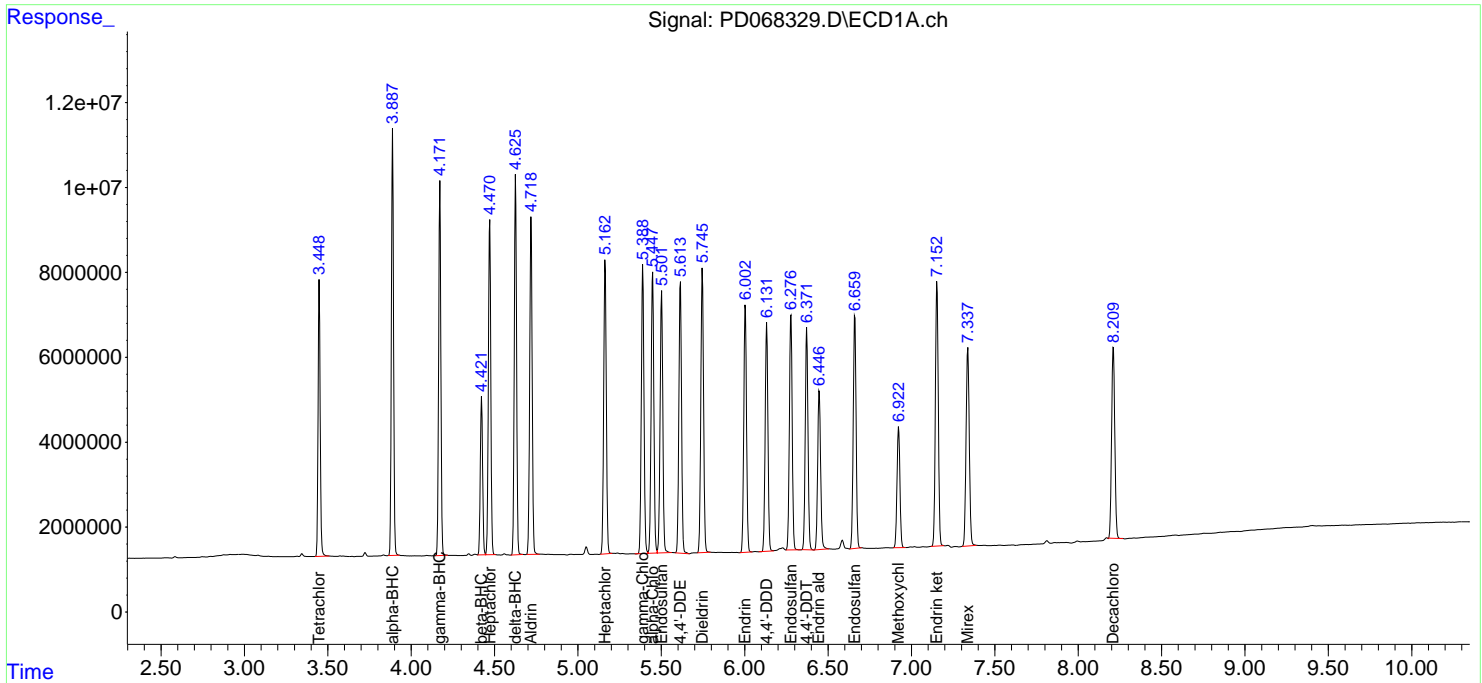
(f)=RT Delta > 1/2 Window (#)=Amounts differ by > 25% (m)=manual int.

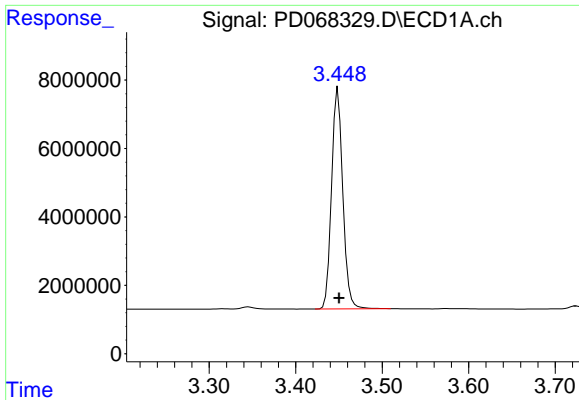
Data Path : Z:\pestpcbsrv\HPCHEM1\ECD\_D\Data\PD030422\  
 Data File : PD068329.D  
 Signal(s) : Signal #1: ECD1A.ch Signal #2: ECD2B.ch  
 Acq On : 03 Mar 2022 19:29  
 Operator : AR\AJ  
 Sample : PSTDCCC050  
 Misc :  
 ALS Vial : 4 Sample Multiplier: 1

Instrument :  
 ECD\_D  
 ClientSampleId :  
 PSTDCCC050

Integration File signal 1: autoint1.e  
 Integration File signal 2: autoint2.e  
 Quant Time: Mar 04 01:13:45 2022  
 Quant Method : Z:\pestpcbsrv\HPCHEM1\ECD\_D\Method\PD030122.M  
 Quant Title : GC Extractables  
 QLast Update : Tue Mar 01 06:48:49 2022  
 Response via : Initial Calibration  
 Integrator: ChemStation

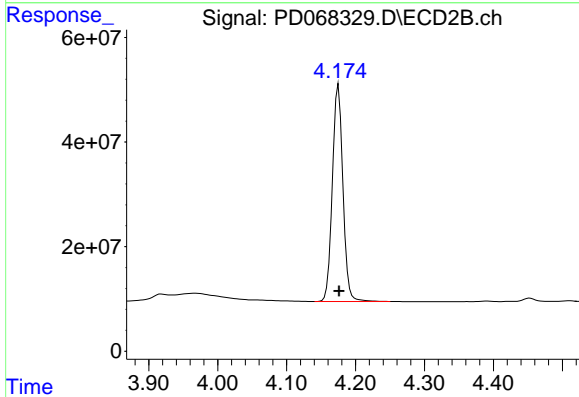
Volume Inj. : 2 µl  
 Signal #1 Phase : ZB-MR2 Signal #2 Phase: ZB-MR1  
 Signal #1 Info : 30M x 0.32mm x0.2 Signal #2 Info : 30M x 0.32mm x 0.50µm



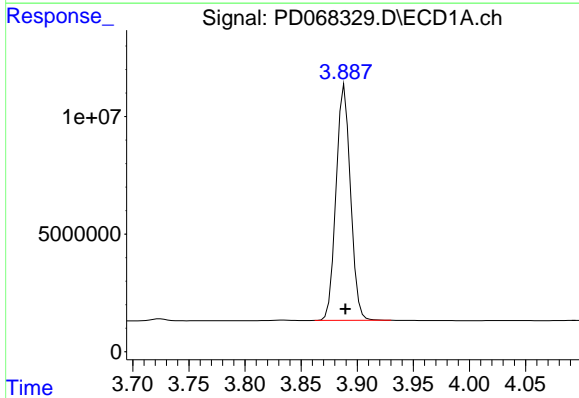


#1 Tetrachloro-m-xylene  
 R.T.: 3.449 min  
 Delta R.T.: 0.000 min  
 Response: 58311886  
 Conc: 49.74 ng/ml

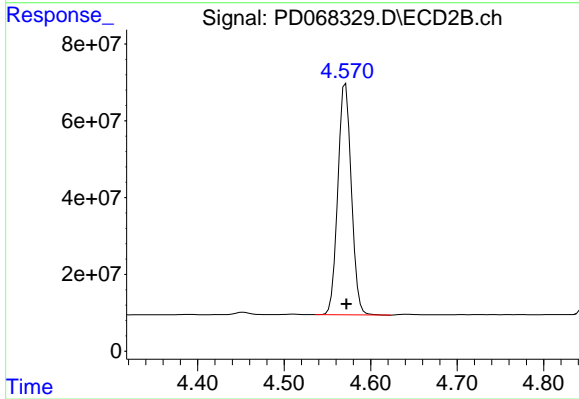
Instrument :  
 ECD\_D  
 ClientSampleId :  
 PSTDCCC050



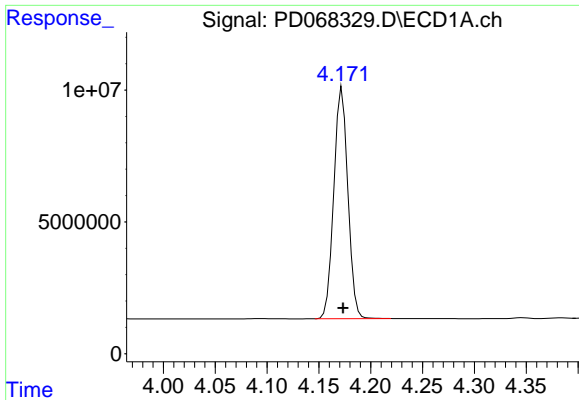
#1 Tetrachloro-m-xylene  
 R.T.: 4.175 min  
 Delta R.T.: 0.000 min  
 Response: 440492925  
 Conc: 45.89 ng/ml



#2 alpha-BHC  
 R.T.: 3.889 min  
 Delta R.T.: 0.000 min  
 Response: 89757533  
 Conc: 52.31 ng/ml



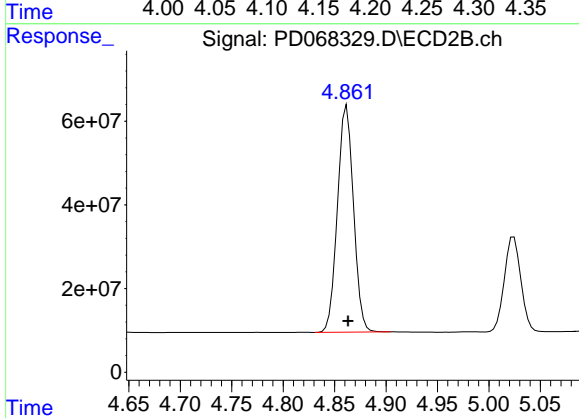
#2 alpha-BHC  
 R.T.: 4.571 min  
 Delta R.T.: -0.001 min  
 Response: 648575714  
 Conc: 47.27 ng/ml



#3 gamma-BHC (Lindane)

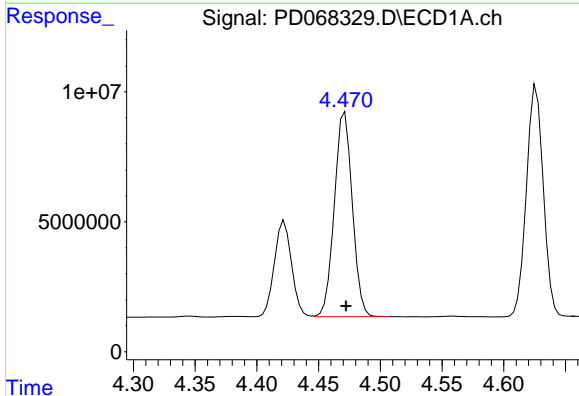
R.T.: 4.173 min  
 Delta R.T.: 0.000 min  
 Response: 82848273  
 Conc: 52.03 ng/ml

Instrument :  
 ECD\_D  
 ClientSampleId :  
 PSTDCCC050



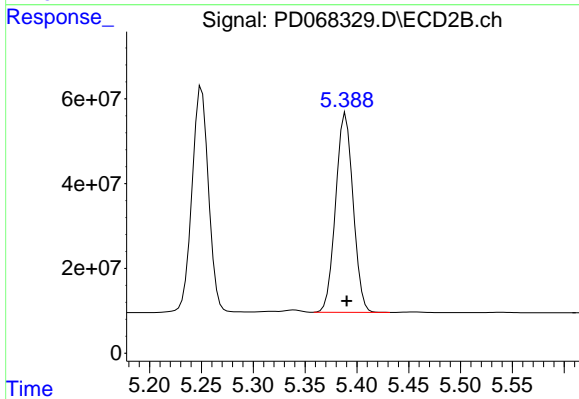
#3 gamma-BHC (Lindane)

R.T.: 4.862 min  
 Delta R.T.: -0.001 min  
 Response: 588268076  
 Conc: 47.44 ng/ml



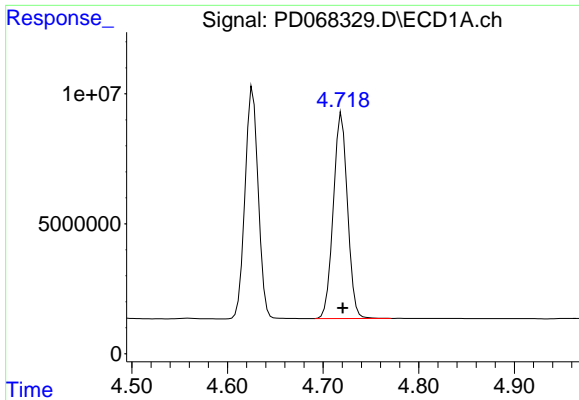
#4 Heptachlor

R.T.: 4.471 min  
 Delta R.T.: -0.001 min  
 Response: 79586496  
 Conc: 52.72 ng/ml



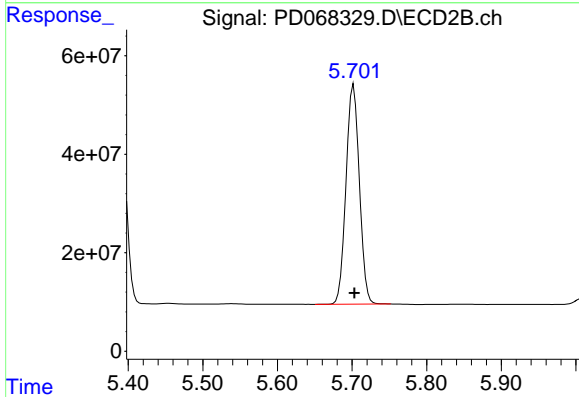
#4 Heptachlor

R.T.: 5.389 min  
 Delta R.T.: -0.001 min  
 Response: 550179296  
 Conc: 48.57 ng/ml

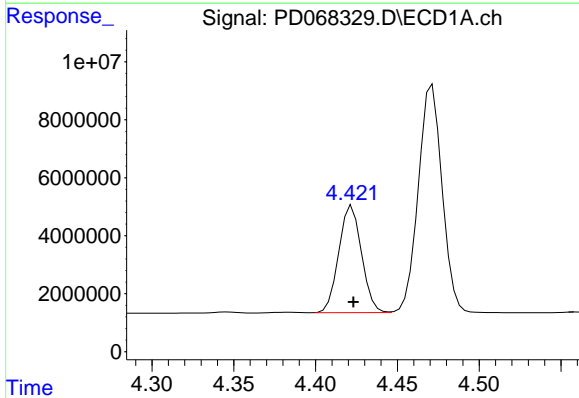


#5 Aldrin  
 R.T.: 4.719 min  
 Delta R.T.: -0.001 min  
 Response: 81258996  
 Conc: 51.88 ng/ml

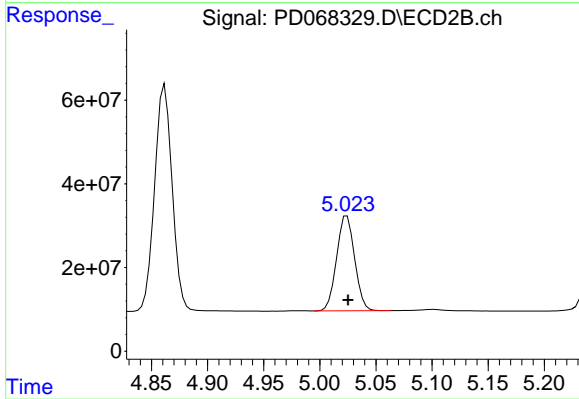
Instrument :  
 ECD\_D  
 ClientSampleId :  
 PSTDCCC050



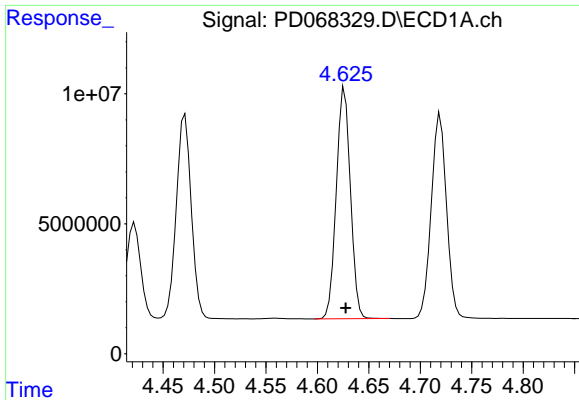
#5 Aldrin  
 R.T.: 5.702 min  
 Delta R.T.: -0.001 min  
 Response: 553856653  
 Conc: 46.84 ng/ml



#6 beta-BHC  
 R.T.: 4.422 min  
 Delta R.T.: 0.000 min  
 Response: 35730229  
 Conc: 50.92 ng/ml



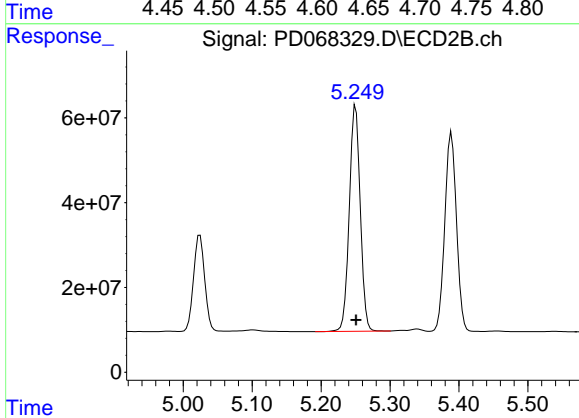
#6 beta-BHC  
 R.T.: 5.024 min  
 Delta R.T.: -0.001 min  
 Response: 253818664  
 Conc: 46.96 ng/ml



#7 delta-BHC

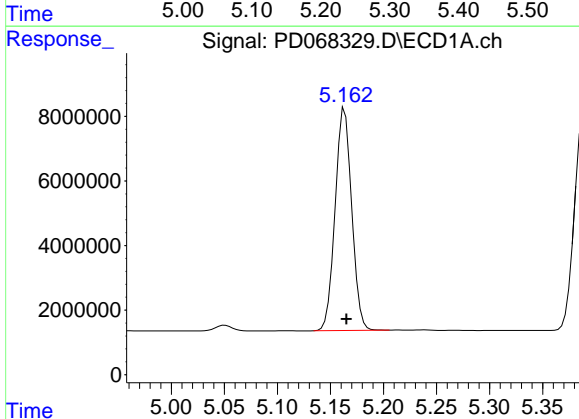
R.T.: 4.627 min  
 Delta R.T.: -0.001 min  
 Response: 84858697  
 Conc: 52.59 ng/ml

Instrument :  
 ECD\_D  
 ClientSampleId :  
 PSTDCCC050



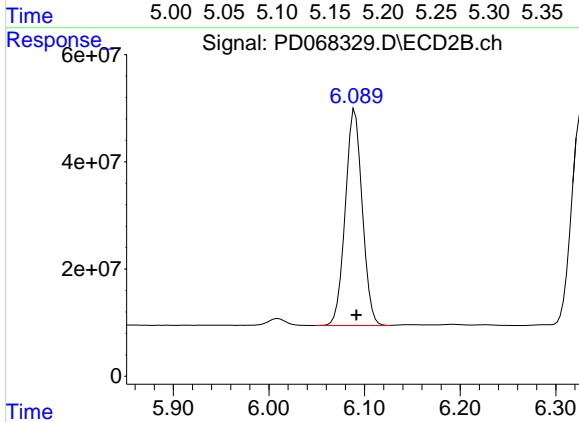
#7 delta-BHC

R.T.: 5.250 min  
 Delta R.T.: 0.000 min  
 Response: 589206985  
 Conc: 47.37 ng/ml



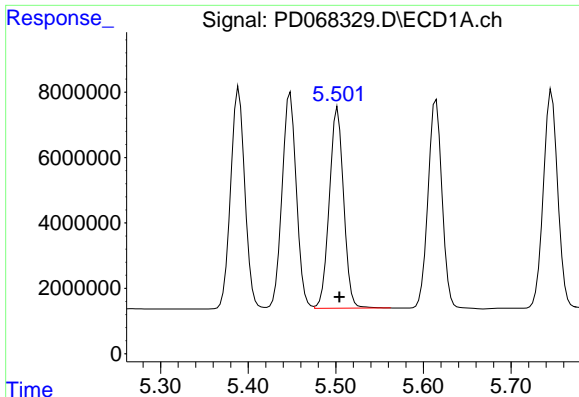
#8 Heptachlor epoxide

R.T.: 5.163 min  
 Delta R.T.: -0.001 min  
 Response: 74843961  
 Conc: 51.34 ng/ml



#8 Heptachlor epoxide

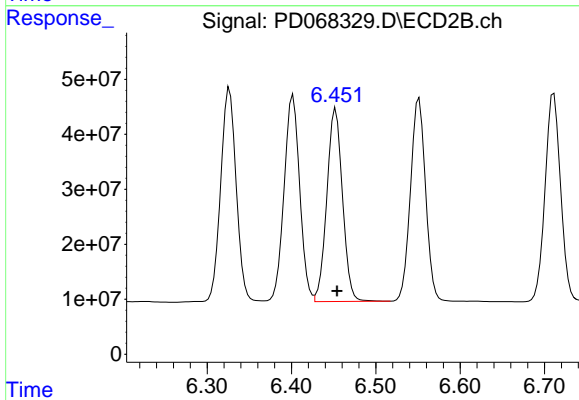
R.T.: 6.090 min  
 Delta R.T.: -0.002 min  
 Response: 499362474  
 Conc: 46.59 ng/ml



#9 Endosulfan I

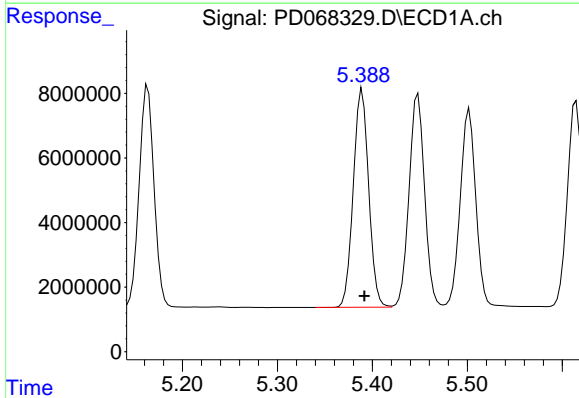
R.T.: 5.502 min  
 Delta R.T.: -0.002 min  
 Response: 69726815  
 Conc: 51.13 ng/ml

Instrument :  
 ECD\_D  
 ClientSampleId :  
 PSTDCCC050



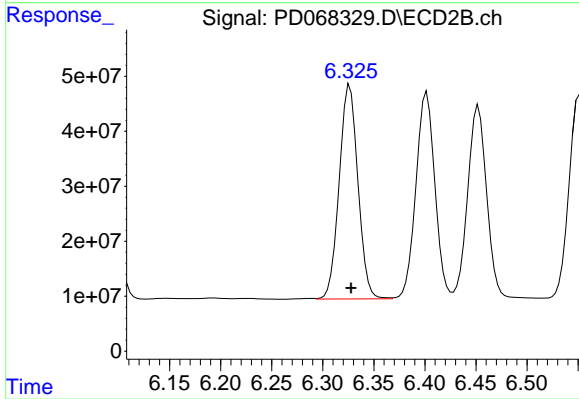
#9 Endosulfan I

R.T.: 6.453 min  
 Delta R.T.: -0.001 min  
 Response: 453300360  
 Conc: 46.98 ng/ml



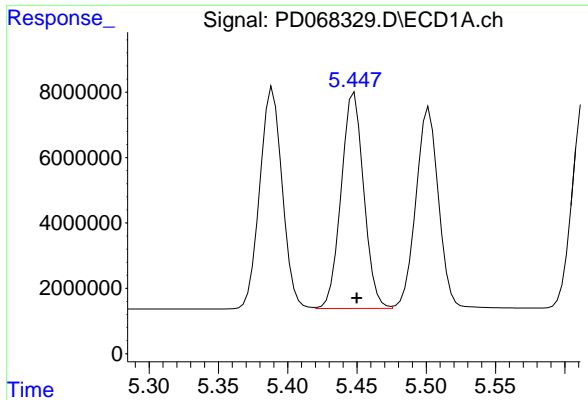
#10 gamma-Chlordane

R.T.: 5.389 min  
 Delta R.T.: -0.002 min  
 Response: 75936350  
 Conc: 51.01 ng/ml



#10 gamma-Chlordane

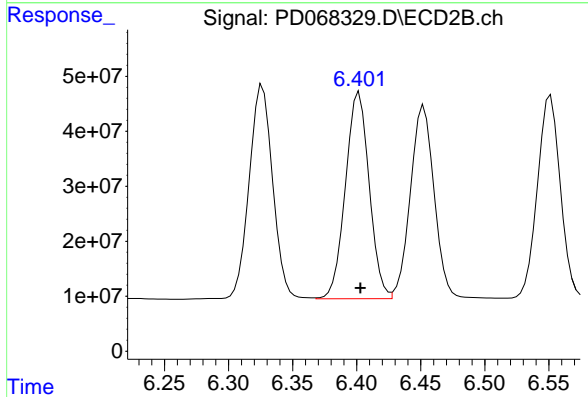
R.T.: 6.326 min  
 Delta R.T.: -0.001 min  
 Response: 498128960  
 Conc: 47.11 ng/ml



#11 alpha-Chlordane

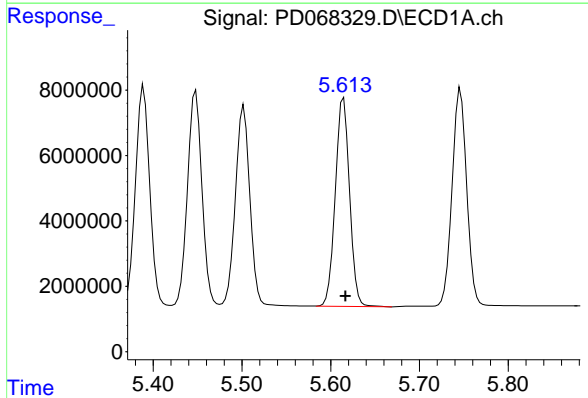
R.T.: 5.448 min  
 Delta R.T.: -0.002 min  
 Response: 75000992  
 Conc: 51.04 ng/ml

Instrument :  
 ECD\_D  
 ClientSampleId :  
 PSTDCCC050



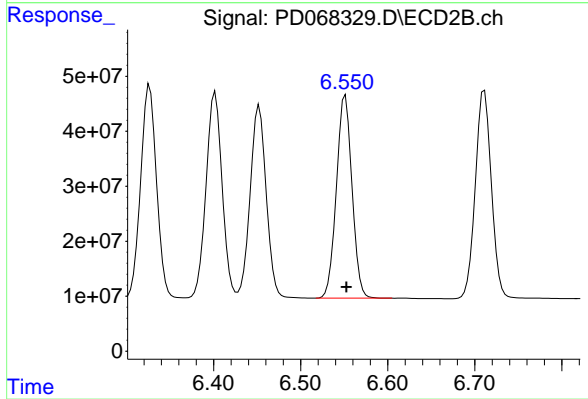
#11 alpha-Chlordane

R.T.: 6.402 min  
 Delta R.T.: 0.000 min  
 Response: 484986863  
 Conc: 47.05 ng/ml



#12 4,4'-DDE

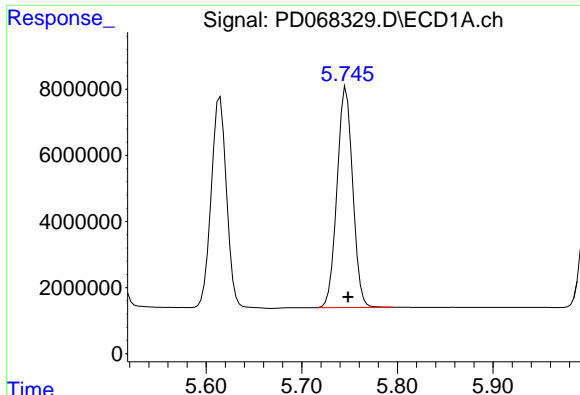
R.T.: 5.615 min  
 Delta R.T.: -0.002 min  
 Response: 71157735  
 Conc: 52.17 ng/ml



#12 4,4'-DDE

R.T.: 6.551 min  
 Delta R.T.: -0.001 min  
 Response: 460093134  
 Conc: 47.06 ng/ml

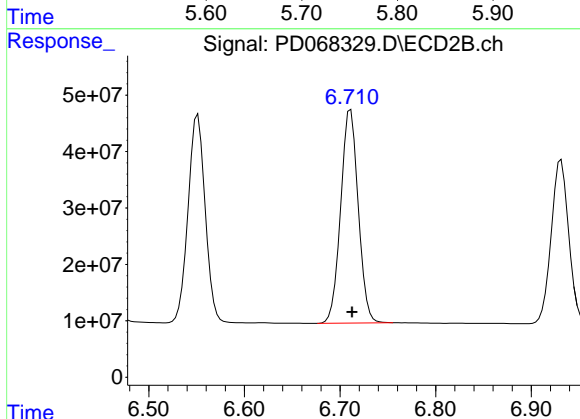




#13 Dieldrin

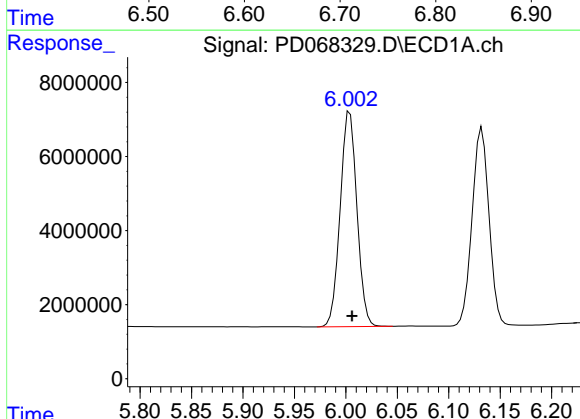
R.T.: 5.746 min  
 Delta R.T.: -0.002 min  
 Response: 75932361  
 Conc: 51.64 ng/ml

Instrument :  
 ECD\_D  
 ClientSampleId :  
 PSTDCCC050



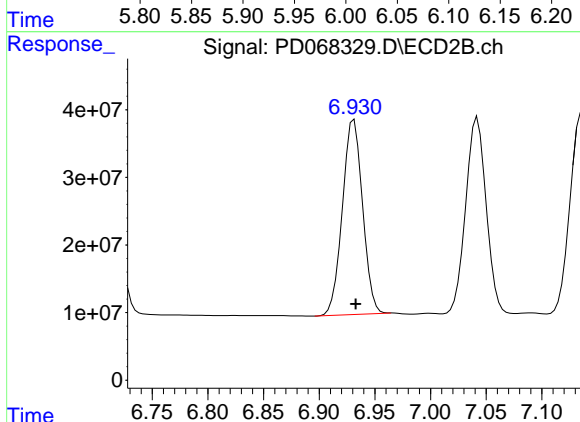
#13 Dieldrin

R.T.: 6.711 min  
 Delta R.T.: -0.002 min  
 Response: 483888145  
 Conc: 46.96 ng/ml



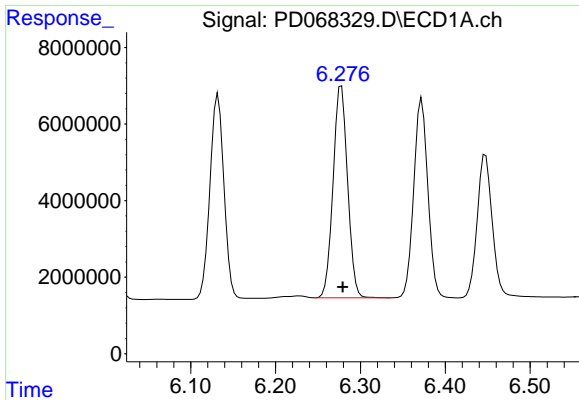
#14 Endrin

R.T.: 6.004 min  
 Delta R.T.: -0.002 min  
 Response: 65904571  
 Conc: 53.35 ng/ml



#14 Endrin

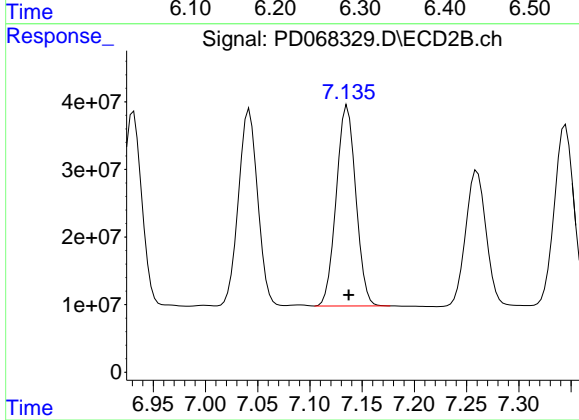
R.T.: 6.931 min  
 Delta R.T.: -0.002 min  
 Response: 364446285  
 Conc: 47.39 ng/ml



#15 Endosulfan II

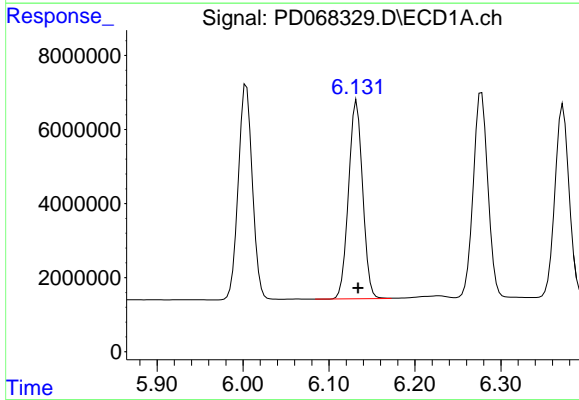
R.T.: 6.278 min  
Delta R.T.: -0.002 min  
Response: 65676068  
Conc: 51.62 ng/ml

Instrument :  
ECD\_D  
ClientSampleId :  
PSTDCCC050



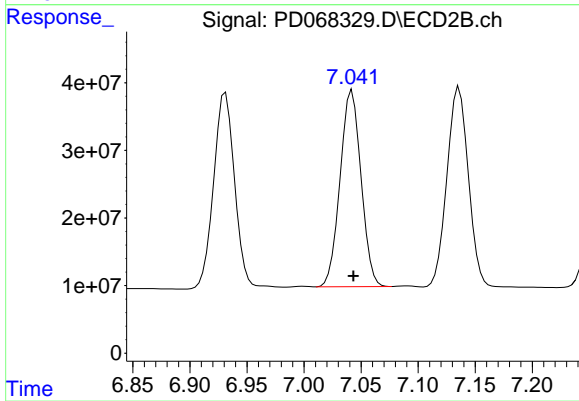
#15 Endosulfan II

R.T.: 7.136 min  
Delta R.T.: -0.001 min  
Response: 386174157  
Conc: 47.00 ng/ml



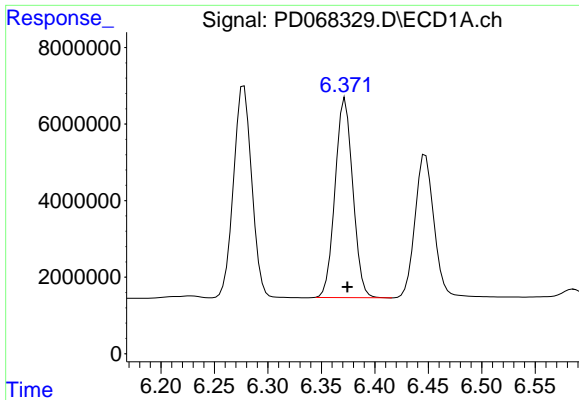
#16 4,4'-DDD

R.T.: 6.132 min  
Delta R.T.: -0.001 min  
Response: 61350244  
Conc: 51.73 ng/ml



#16 4,4'-DDD

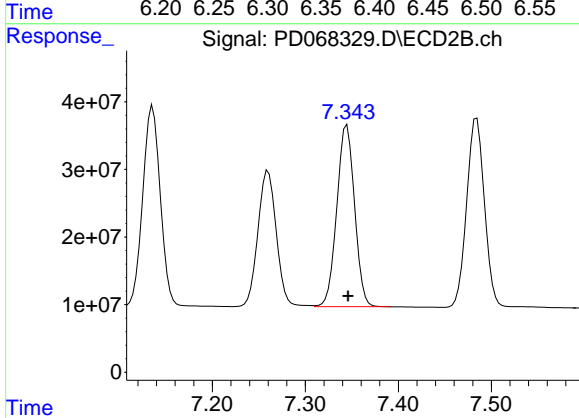
R.T.: 7.042 min  
Delta R.T.: -0.001 min  
Response: 371138491  
Conc: 47.16 ng/ml



#17 4,4'-DDT

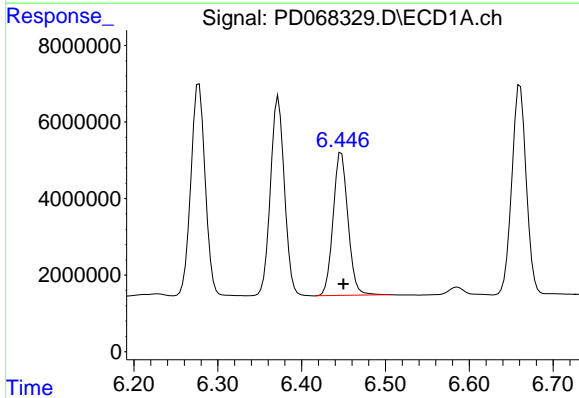
R.T.: 6.372 min  
 Delta R.T.: -0.002 min  
 Response: 60192546  
 Conc: 54.58 ng/ml

Instrument :  
 ECD\_D  
 ClientSampleId :  
 PSTDCCC050



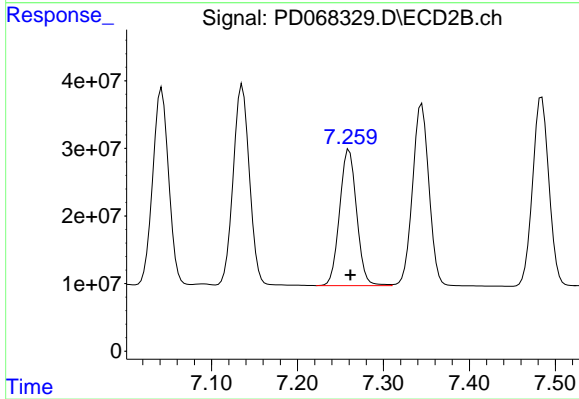
#17 4,4'-DDT

R.T.: 7.345 min  
 Delta R.T.: -0.001 min  
 Response: 357003465  
 Conc: 50.46 ng/ml



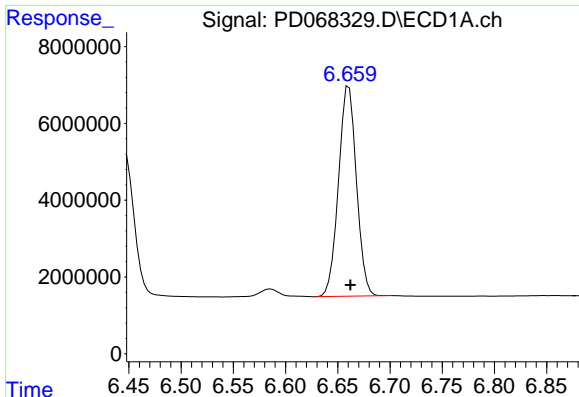
#18 Endrin aldehyde

R.T.: 6.447 min  
 Delta R.T.: -0.002 min  
 Response: 45929607  
 Conc: 50.11 ng/ml



#18 Endrin aldehyde

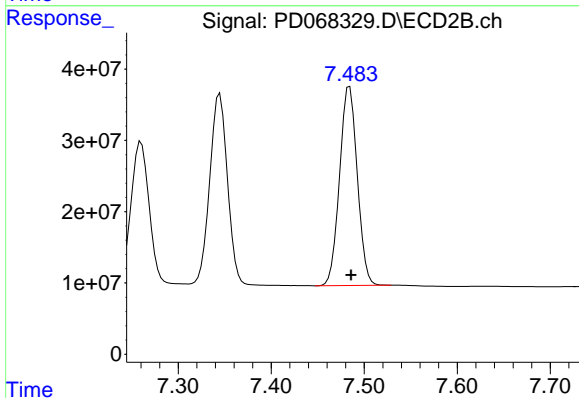
R.T.: 7.260 min  
 Delta R.T.: -0.001 min  
 Response: 277334935  
 Conc: 46.09 ng/ml



#19 Endosulfan Sulfate

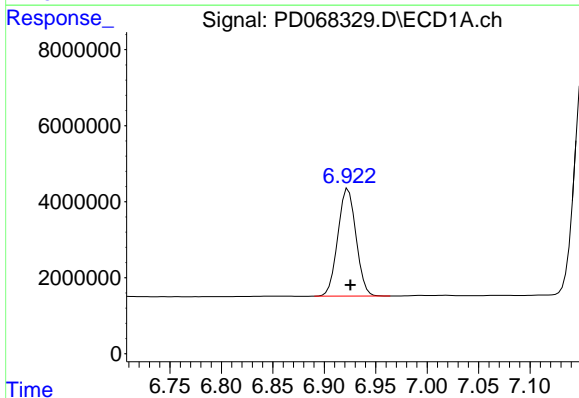
R.T.: 6.661 min  
 Delta R.T.: -0.001 min  
 Response: 65319793  
 Conc: 51.83 ng/ml

Instrument :  
 ECD\_D  
 ClientSampleId :  
 PSTDCCC050



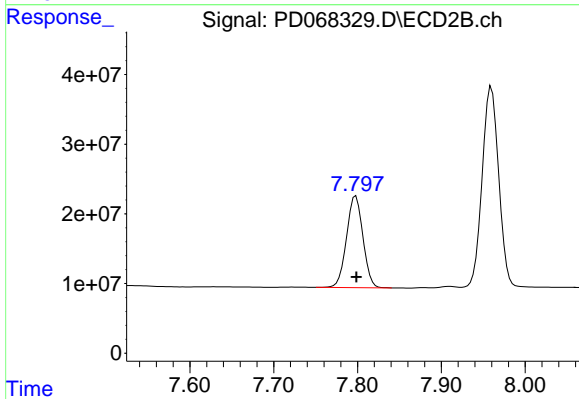
#19 Endosulfan Sulfate

R.T.: 7.484 min  
 Delta R.T.: -0.001 min  
 Response: 369723516  
 Conc: 47.52 ng/ml



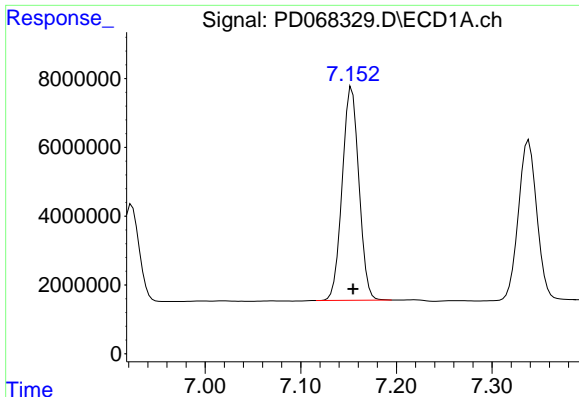
#20 Methoxychlor

R.T.: 6.923 min  
 Delta R.T.: -0.002 min  
 Response: 34828065  
 Conc: 53.67 ng/ml



#20 Methoxychlor

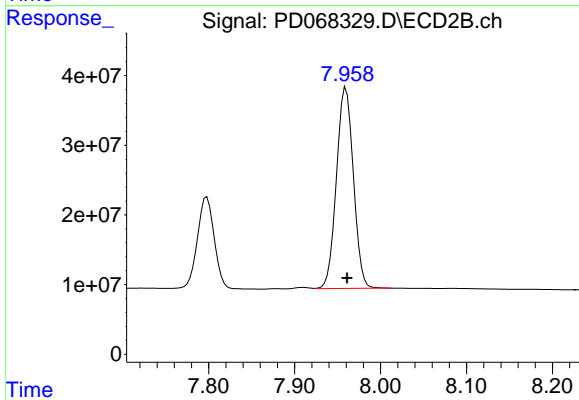
R.T.: 7.798 min  
 Delta R.T.: 0.000 min  
 Response: 179057297  
 Conc: 51.54 ng/ml



#21 Endrin ketone

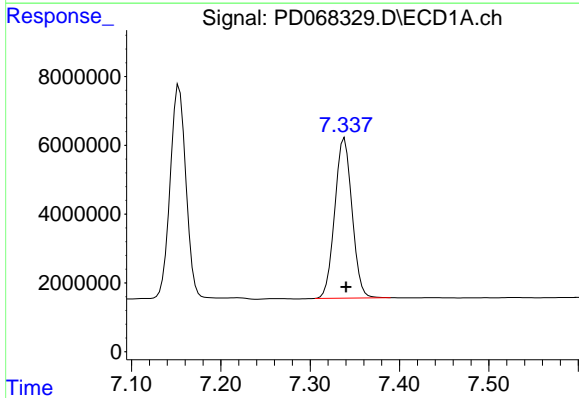
R.T.: 7.153 min  
 Delta R.T.: -0.001 min  
 Response: 75696781  
 Conc: 51.42 ng/ml

Instrument :  
 ECD\_D  
 ClientSampleId :  
 PSTDCCC050



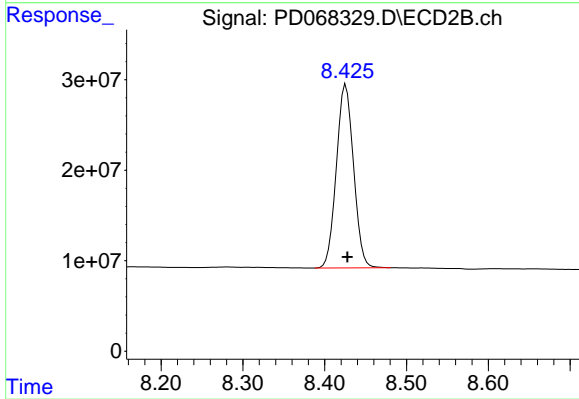
#21 Endrin ketone

R.T.: 7.960 min  
 Delta R.T.: -0.001 min  
 Response: 395300483  
 Conc: 47.09 ng/ml



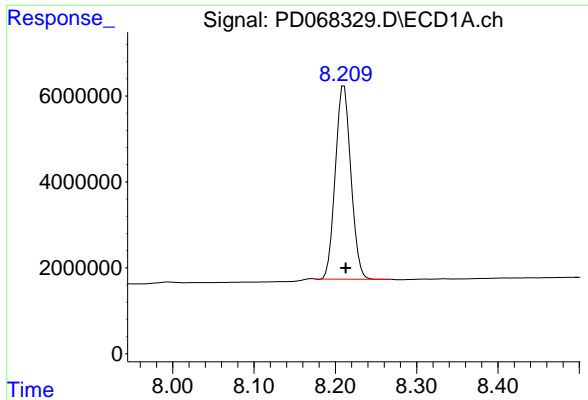
#22 Mirex

R.T.: 7.338 min  
 Delta R.T.: -0.002 min  
 Response: 62533919  
 Conc: 49.34 ng/ml



#22 Mirex

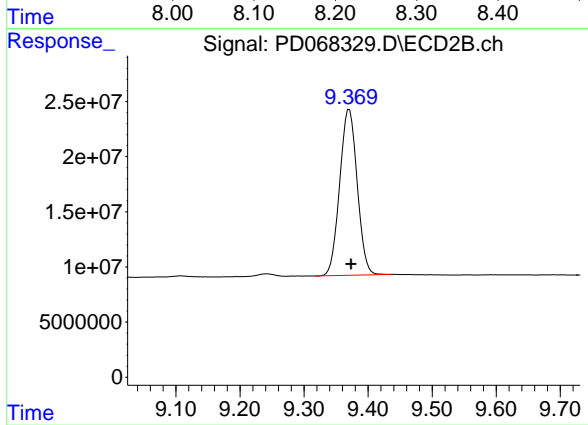
R.T.: 8.426 min  
 Delta R.T.: -0.002 min  
 Response: 295159510  
 Conc: 46.15 ng/ml



#28 Decachlorobiphenyl

R.T.: 8.211 min  
Delta R.T.: -0.002 min  
Response: 59857139  
Conc: 51.44 ng/ml

Instrument :  
ECD\_D  
ClientSampleId :  
PSTDCCC050



#28 Decachlorobiphenyl

R.T.: 9.371 min  
Delta R.T.: -0.003 min  
Response: 285145619  
Conc: 48.10 ng/ml