

Data Path : Z:\pestpcbsrv\HPCHEM1\ECD_D\Data\PD030424\
 Data File : PD081932.D
 Signal(s) : Signal #1: ECD1A.ch Signal #2: ECD2B.ch
 Acq On : 04 Mar 2024 20:28
 Operator : AR\AJ
 Sample : P1605-17
 Misc :
 ALS Vial : 33 Sample Multiplier: 1

Instrument :
 ECD_D
 ClientSampleId :
 BGRL3

Integration File signal 1: autoint1.e
 Integration File signal 2: autoint2.e
 Quant Time: Mar 04 21:21:54 2024
 Quant Method : Z:\pestpcbsrv\HPCHEM1\ECD_D\Method\PD021224CLP.M
 Quant Title : GC Extractables
 QLast Update : Mon Feb 12 17:06:05 2024
 Response via : Initial Calibration
 Integrator: ChemStation

Volume Inj. : 1 µl
 Signal #1 Phase : ZB-MR2 Signal #2 Phase: ZB-MR2
 Signal #1 Info : 30M x 0.32mm x0.5 Signal #2 Info : 30M x 0.32mm x 0.25µm

Compound	RT#1	RT#2	Resp#1	Resp#2	ng/ml	ng/ml

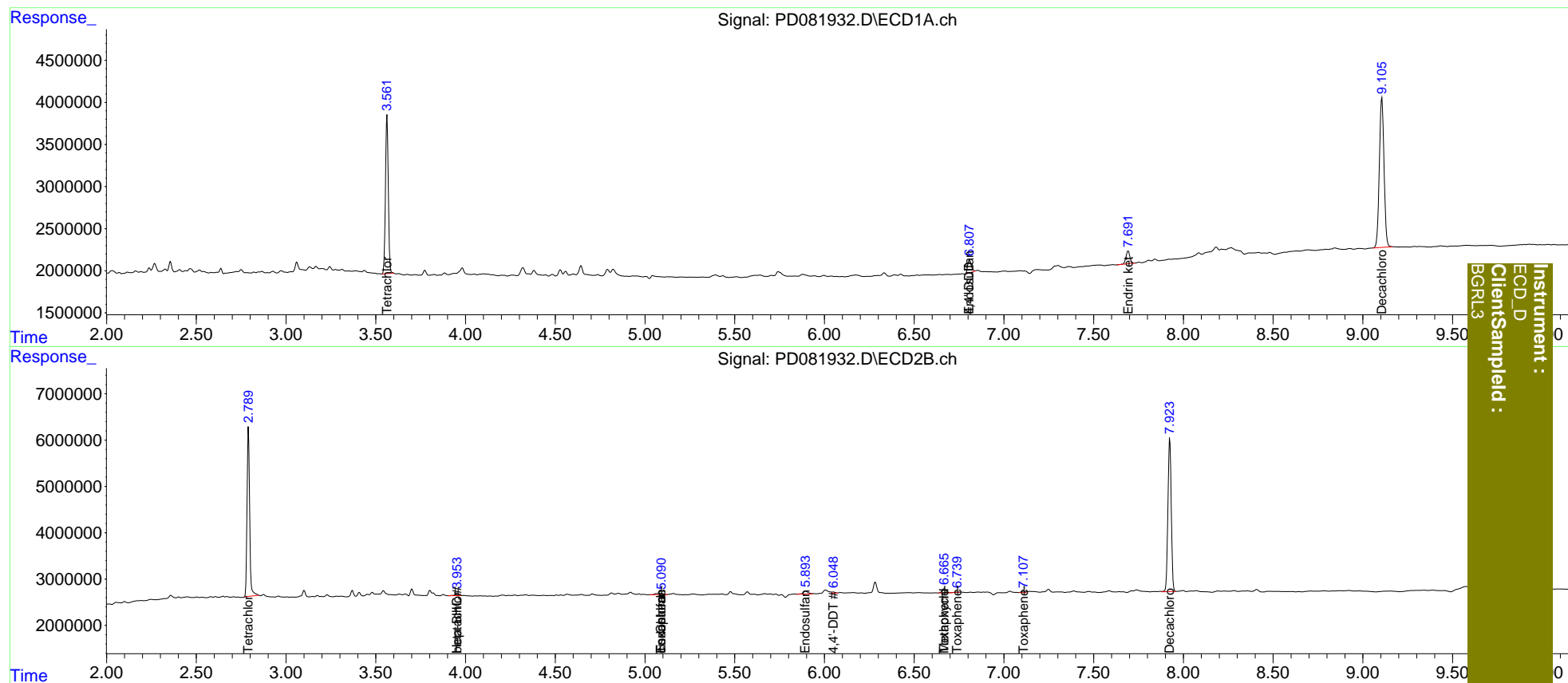
System Monitoring Compounds						
1) SA Tetrachlo...	3.563	2.791	20755093	36525026	15.181	14.899
27) SA Decachlor...	9.106	7.924	32369411	42730470	16.777	17.225
Target Compounds						
3) MA gamma-BHC...	0.000	3.631	0	349541	N.D.	<MDL
4) MA Heptachlor	0.000	3.954	0	778439	N.D.	0.219
5) MB Aldrin	0.000	4.243	0	130485	N.D.	<MDL
6) B beta-BHC	0.000	3.954f	0	778439	N.D.	0.461
8) B Heptachlo...	0.000	4.707f	0	21622	N.D.	<MDL
9) A Endosulfan I	0.000	5.091	0	861368	N.D.	0.288
11) B cis-Chlor...	0.000	5.091	0	861368	N.D.	0.269
12) B 4,4'-DDE	0.000	5.267	0	202588	N.D.	<MDL
14) MA Endrin	0.000	5.667	0	220496	N.D.	<MDL
15) B Endosulfa...	6.808	5.895f	2119980	1238133	1.098	0.439 #
16) A 4,4'-DDD	6.808f	5.833	2119980	-112226	1.276	N.D. #
17) MA 4,4'-DDT	0.000	6.049	0	316474	N.D.	0.123
20) A Methoxychlor	0.000	6.667f	0	1280639	N.D.	0.959
21) B Endrin ke...	7.693	0.000	2267246	0	1.173	N.D. #
22) Toxaphene-1	0.000	5.091f	0	861368	N.D.	52.612
24) Toxaphene-3	0.000	6.667f	0	1280639	N.D.	21.879
25) Toxaphene-4	0.000	6.741	0	83521	N.D.	1.050
26) Toxaphene-5	0.000	7.109f	0	378278	N.D.	11.666

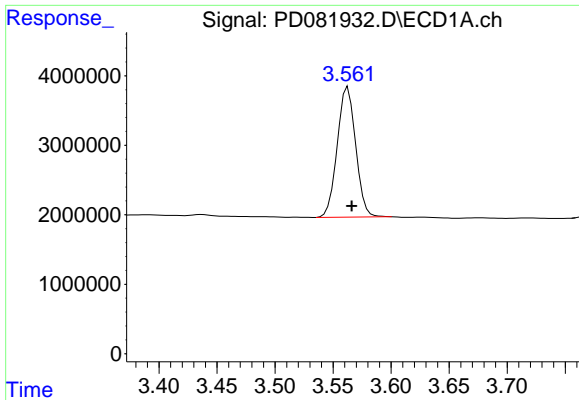
(f)=RT Delta > 1/2 Window (#)=Amounts differ by > 25% (m)=manual int.

Data Path : Z:\pestpcbsrv\HPCHEM1\ECD_D\Data\PD030424\
 Data File : PD081932.D
 Signal(s) : Signal #1: ECD1A.ch Signal #2: ECD2B.ch
 Acq On : 04 Mar 2024 20:28
 Operator : AR\AJ
 Sample : P1605-17
 Misc :
 ALS Vial : 33 Sample Multiplier: 1

Integration File signal 1: autoint1.e
 Integration File signal 2: autoint2.e
 Quant Time: Mar 04 21:21:54 2024
 Quant Method : Z:\pestpcbsrv\HPCHEM1\ECD_D\Method\PD021224CLP.M
 Quant Title : GC Extractables
 QLast Update : Mon Feb 12 17:06:05 2024
 Response via : Initial Calibration
 Integrator: ChemStation

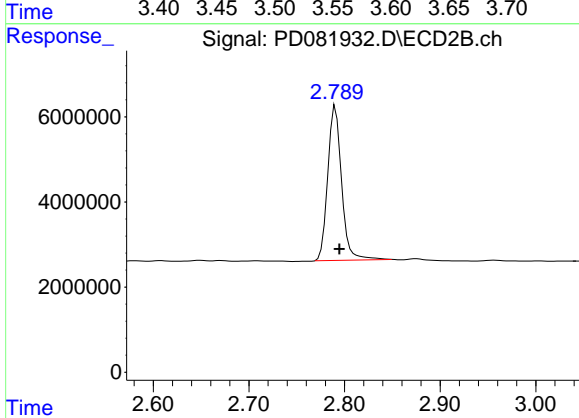
Volume Inj. : 1 µl
 Signal #1 Phase : ZB-MR1 Signal #2 Phase: ZB-MR2
 Signal #1 Info : 30M x 0.32mm x0.5 Signal #2 Info : 30M x 0.32mm x 0.25µm



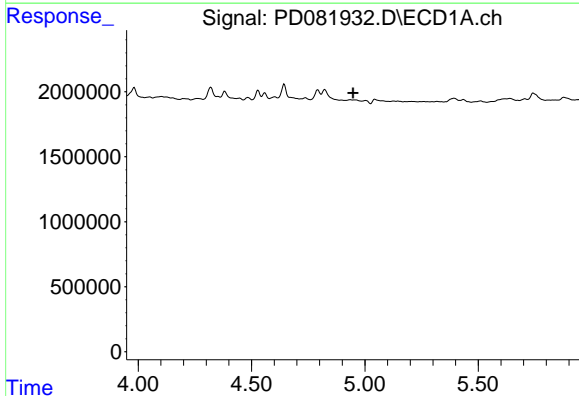


#1 Tetrachloro-m-xylene
 R.T.: 3.563 min
 Delta R.T.: -0.003 min
 Response: 20755093
 Conc: 15.18 ng/ml

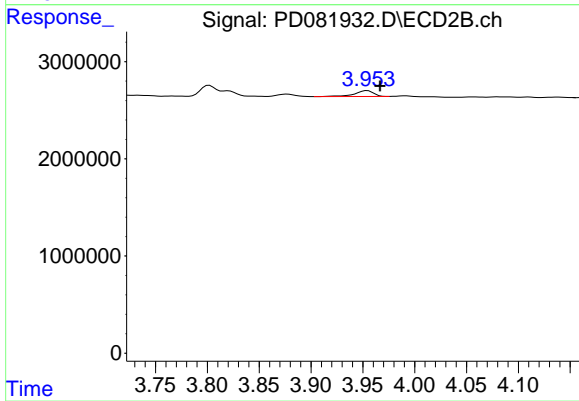
Instrument :
 ECD_D
 ClientSampleId :
 BGRL3



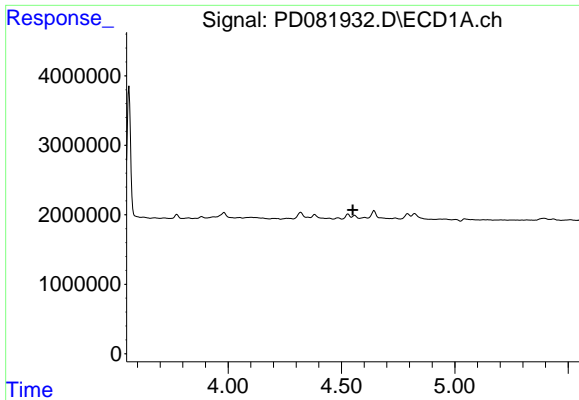
#1 Tetrachloro-m-xylene
 R.T.: 2.791 min
 Delta R.T.: -0.004 min
 Response: 36525026
 Conc: 14.90 ng/ml



#4 Heptachlor
 R.T.: 0.000 min
 Exp R.T. : 4.949 min
 Response: 0
 Conc: N.D.



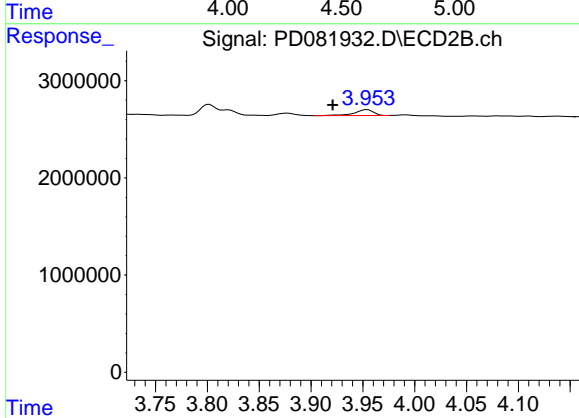
#4 Heptachlor
 R.T.: 3.954 min
 Delta R.T.: -0.012 min
 Response: 778439
 Conc: 0.22 ng/ml



#6 beta-BHC

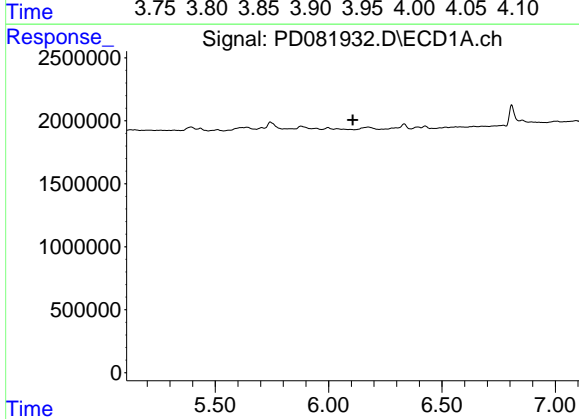
R.T.: 0.000 min
 Exp R.T.: 4.550 min
 Response: 0
 Conc: N.D.

Instrument :
 ECD_D
 ClientSampleId :
 BGRL3



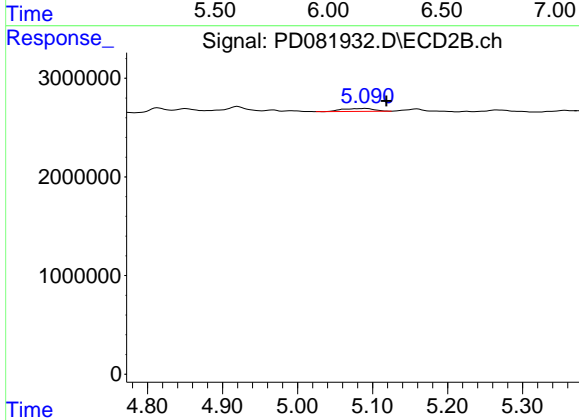
#6 beta-BHC

R.T.: 3.954 min
 Delta R.T.: 0.033 min
 Response: 778439
 Conc: 0.46 ng/ml



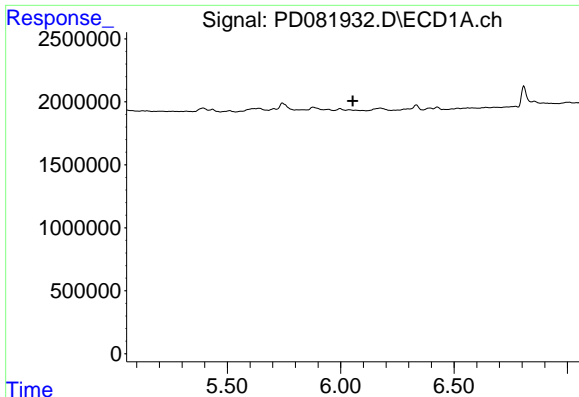
#9 Endosulfan I

R.T.: 0.000 min
 Exp R.T.: 6.106 min
 Response: 0
 Conc: N.D.



#9 Endosulfan I

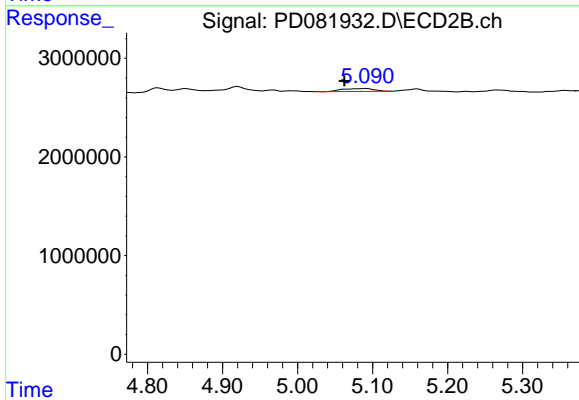
R.T.: 5.091 min
 Delta R.T.: -0.027 min
 Response: 861368
 Conc: 0.29 ng/ml



#11 cis-Chlordane

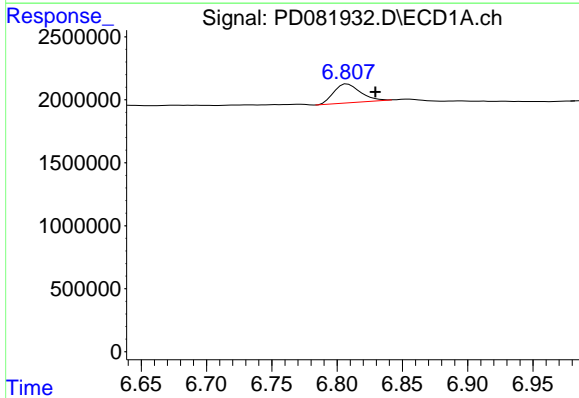
R.T.: 0.000 min
 Exp R.T.: 6.054 min
 Response: 0
 Conc: N.D.

Instrument :
 ECD_D
 ClientSampleId :
 BGRL3



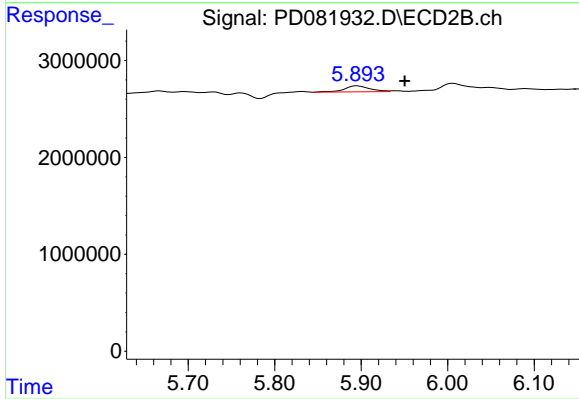
#11 cis-Chlordane

R.T.: 5.091 min
 Delta R.T.: 0.029 min
 Response: 861368
 Conc: 0.27 ng/ml



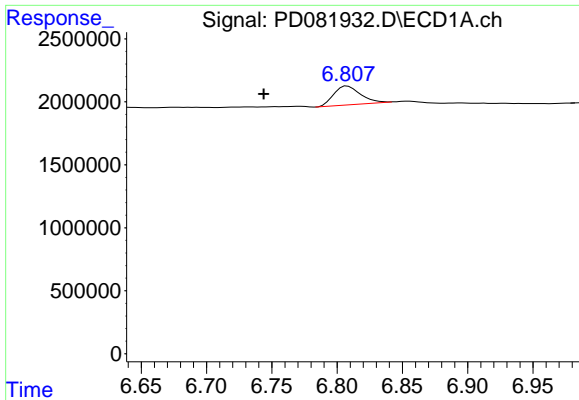
#15 Endosulfan II

R.T.: 6.808 min
 Delta R.T.: -0.021 min
 Response: 2119980
 Conc: 1.10 ng/ml



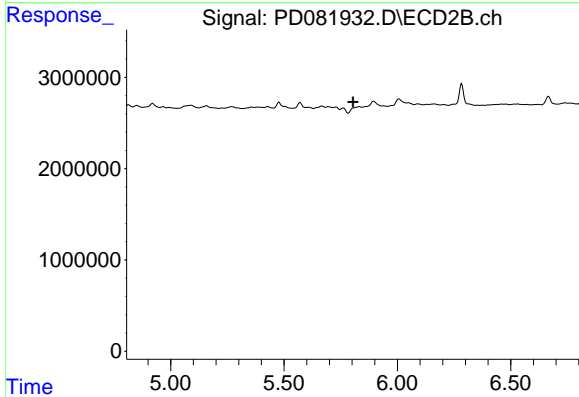
#15 Endosulfan II

R.T.: 5.895 min
 Delta R.T.: -0.056 min
 Response: 1238133
 Conc: 0.44 ng/ml

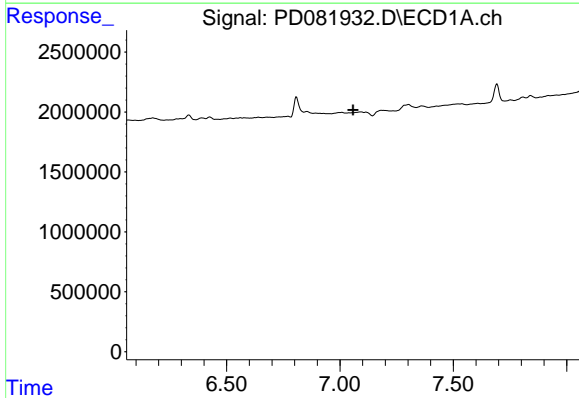


#16 4,4'-DDD
 R.T.: 6.808 min
 Delta R.T.: 0.064 min
 Response: 2119980
 Conc: 1.28 ng/ml

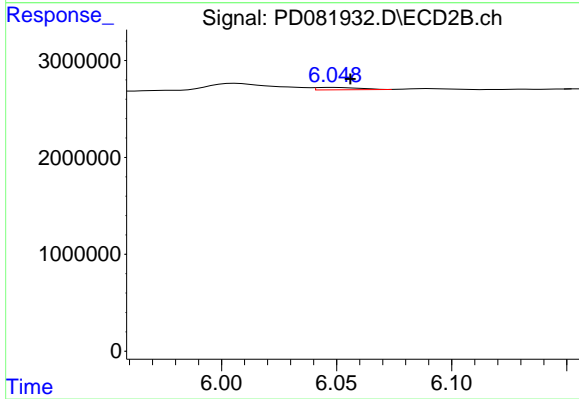
Instrument :
 ECD_D
 ClientSampleId :
 BGRL3



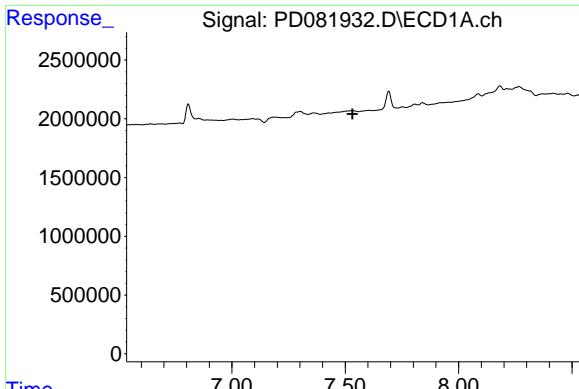
#16 4,4'-DDD
 R.T.: 5.833 min
 Delta R.T.: 0.028 min
 Response: -112226
 Conc: N.D.



#17 4,4'-DDT
 R.T.: 0.000 min
 Exp R.T. : 7.058 min
 Response: 0
 Conc: N.D.



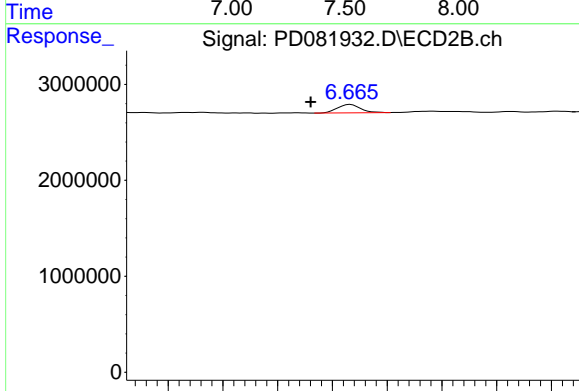
#17 4,4'-DDT
 R.T.: 6.049 min
 Delta R.T.: -0.007 min
 Response: 316474
 Conc: 0.12 ng/ml



#20 Methoxychlor

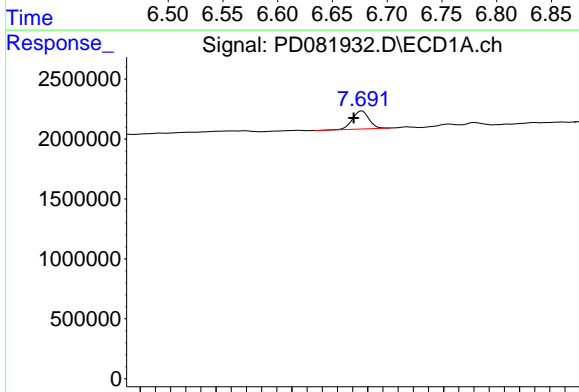
R.T.: 0.000 min
 Exp R.T.: 7.532 min
 Response: 0
 Conc: N.D.

Instrument : ECD_D
 ClientSampleId : BGRL3



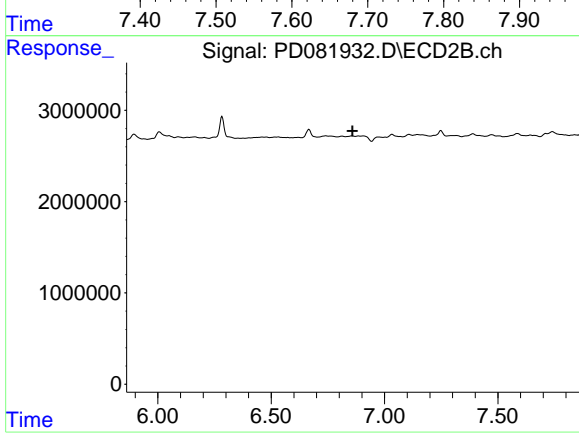
#20 Methoxychlor

R.T.: 6.667 min
 Delta R.T.: 0.036 min
 Response: 1280639
 Conc: 0.96 ng/ml



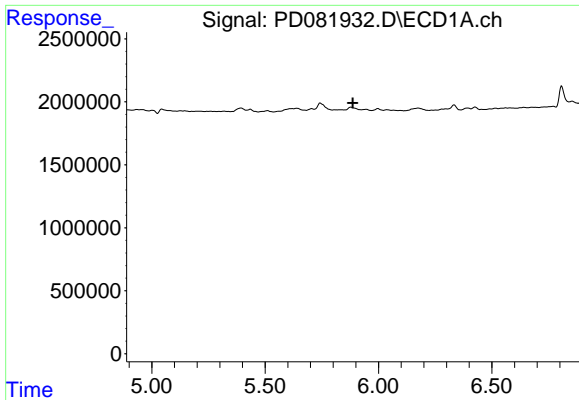
#21 Endrin ketone

R.T.: 7.693 min
 Delta R.T.: 0.011 min
 Response: 2267246
 Conc: 1.17 ng/ml



#21 Endrin ketone

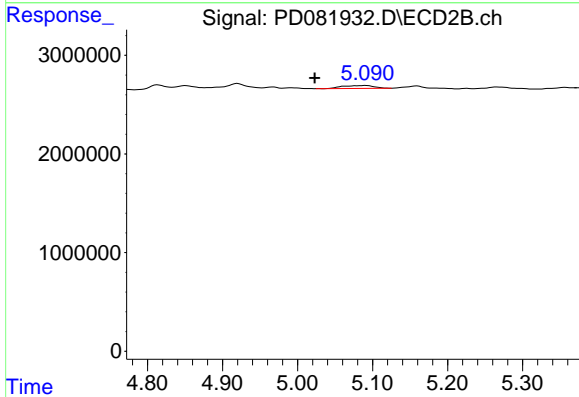
R.T.: 0.000 min
 Exp R.T.: 6.859 min
 Response: 0
 Conc: N.D.



#22 Toxaphene-1

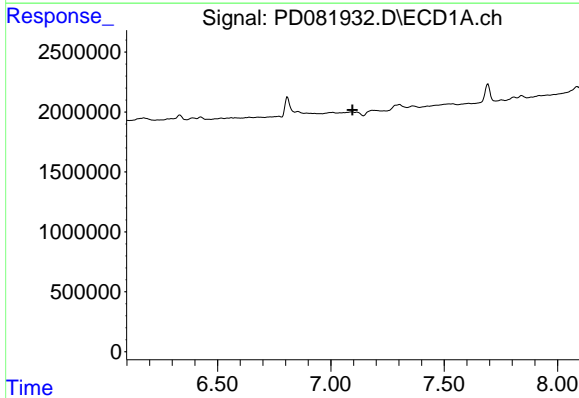
R.T.: 0.000 min
 Exp R.T.: 5.886 min
 Response: 0
 Conc: N.D.

Instrument :
 ECD_D
 ClientSampleId :
 BGRL3



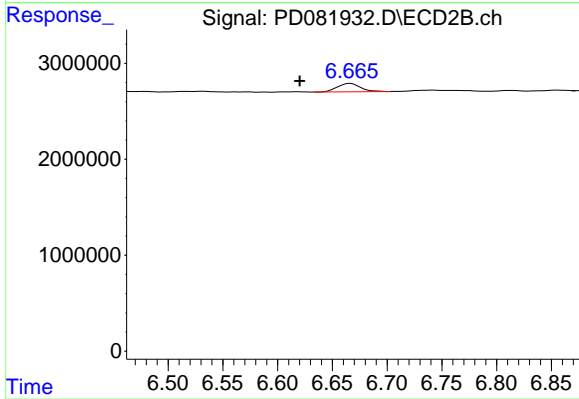
#22 Toxaphene-1

R.T.: 5.091 min
 Delta R.T.: 0.068 min
 Response: 861368
 Conc: 52.61 ng/ml



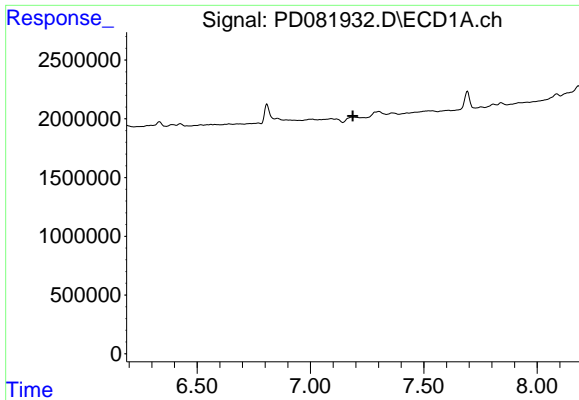
#24 Toxaphene-3

R.T.: 0.000 min
 Exp R.T.: 7.096 min
 Response: 0
 Conc: N.D.



#24 Toxaphene-3

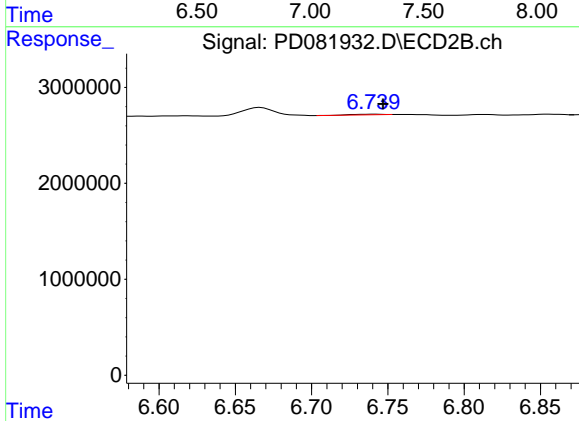
R.T.: 6.667 min
 Delta R.T.: 0.046 min
 Response: 1280639
 Conc: 21.88 ng/ml



#25 Toxaphene-4

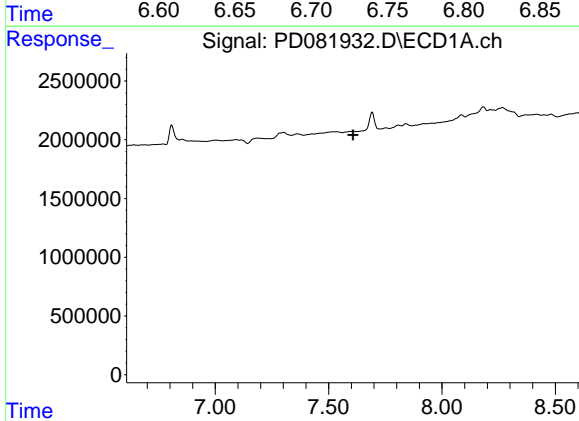
R.T.: 0.000 min
 Exp R.T.: 7.187 min
 Response: 0
 Conc: N.D.

Instrument :
 ECD_D
 ClientSampleId :
 BGRL3



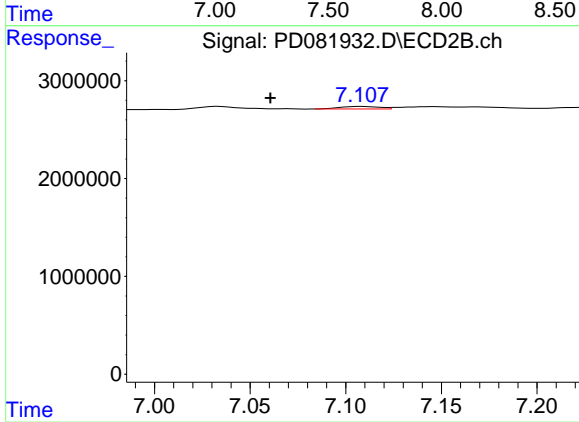
#25 Toxaphene-4

R.T.: 6.741 min
 Delta R.T.: -0.006 min
 Response: 83521
 Conc: 1.05 ng/ml



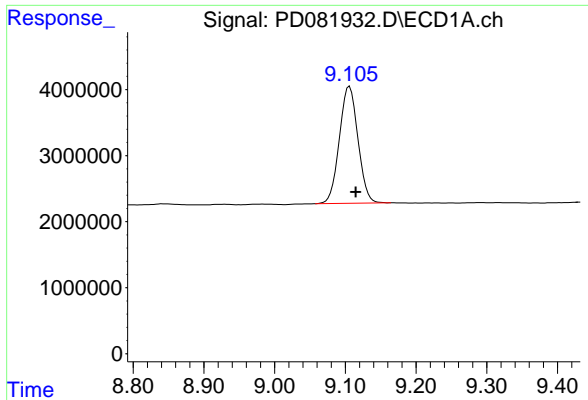
#26 Toxaphene-5

R.T.: 0.000 min
 Exp R.T.: 7.609 min
 Response: 0
 Conc: N.D.



#26 Toxaphene-5

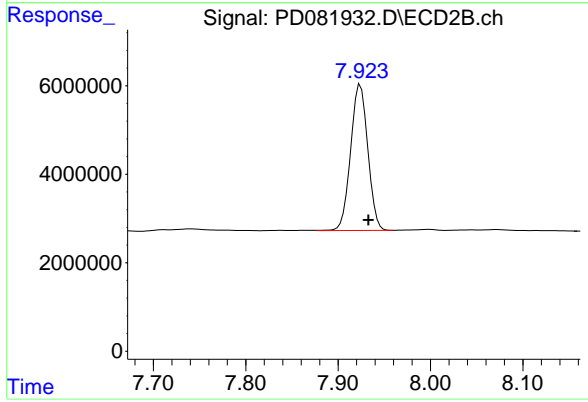
R.T.: 7.109 min
 Delta R.T.: 0.048 min
 Response: 378278
 Conc: 11.67 ng/ml



#27 Decachlorobiphenyl

R.T.: 9.106 min
Delta R.T.: -0.009 min
Response: 32369411
Conc: 16.78 ng/ml

Instrument :
ECD_D
ClientSampleId :
BGRL3



#27 Decachlorobiphenyl

R.T.: 7.924 min
Delta R.T.: -0.009 min
Response: 42730470
Conc: 17.23 ng/ml