

Data Path : Z:\pestpcbsrv\HPCHEM1\ECD\_D\Data\PD030519\  
 Data File : PD051614.D  
 Signal(s) : Signal #1: ECD1A.CH Signal #2: ECD2B.CH  
 Acq On : 05 Mar 2019 16:26  
 Operator : AJ\SJ  
 Sample : K1626-09  
 Misc :  
 ALS Vial : 21 Sample Multiplier: 1

Instrument :  
 ECD\_D  
 ClientSampleId :

Integration File signal 1: autoint1.e  
 Integration File signal 2: autoint2.e  
 Quant Time: Mar 06 04:16:23 2019  
 Quant Method : Z:\pestpcbsrv\HPCHEM1\ECD\_D\Method\PD022219CLP.M  
 Quant Title : GC Extractables  
 QLast Update : Fri Feb 22 04:35:08 2019  
 Response via : Initial Calibration  
 Integrator: ChemStation 6890 Scale Mode: Large solvent peaks clipped

Volume Inj. : 1 µl  
 Signal #1 Phase : ZB-MR2 Signal #2 Phase: ZB-MR1  
 Signal #1 Info : 30M x 0.32mm x0.2 Signal #2 Info : 30M x 0.32mm x 0.50µm

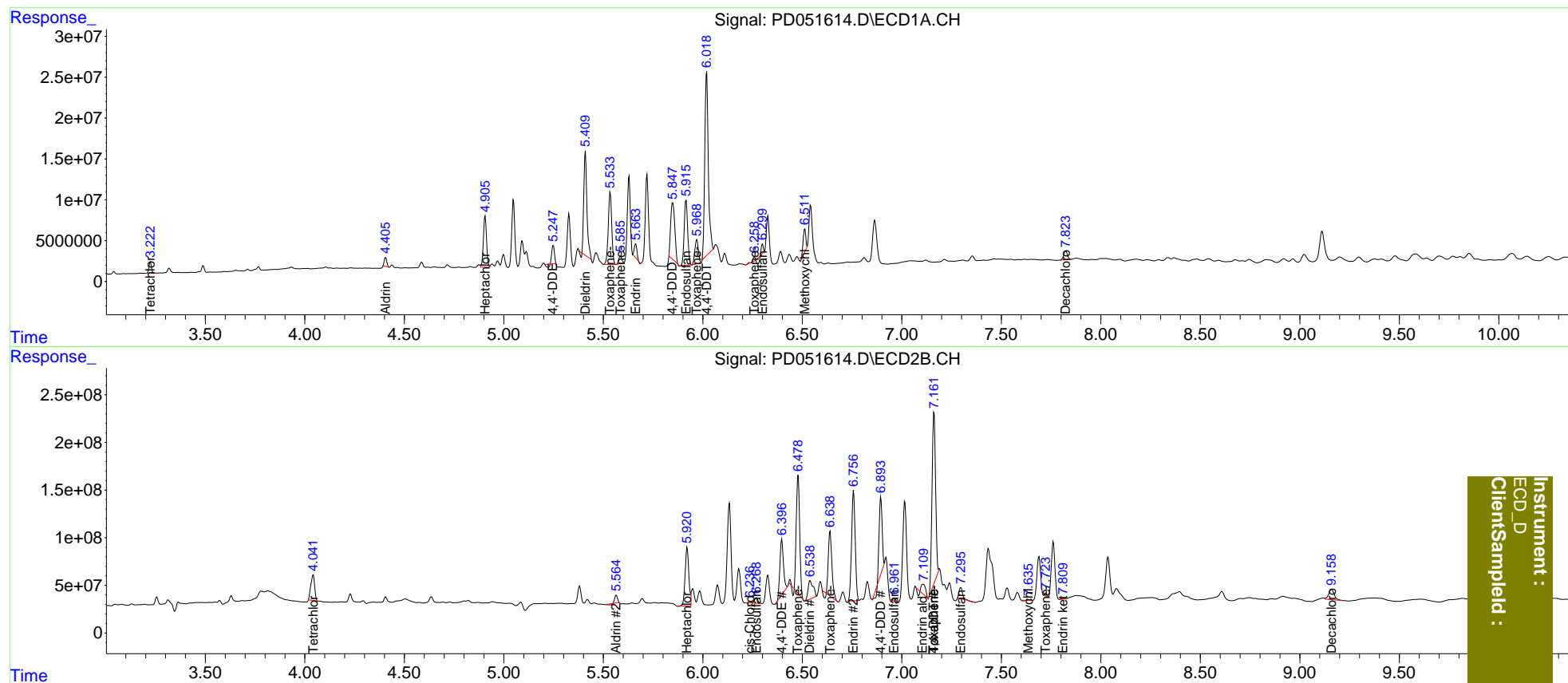
|                             | Compound        | RT#1   | RT#2  | Resp#1   | Resp#2   | ng/ml    | ng/ml      |
|-----------------------------|-----------------|--------|-------|----------|----------|----------|------------|
| -----                       |                 |        |       |          |          |          |            |
| System Monitoring Compounds |                 |        |       |          |          |          |            |
| 1)                          | SA Tetrachlo... | 3.224  | 4.042 | 12141679 | 358.6E6  | 8.449    | 11.605 #   |
| 27)                         | SA Decachlor... | 7.824  | 9.160 | 13698583 | 209.4E6  | 11.390   | 11.045     |
| Target Compounds            |                 |        |       |          |          |          |            |
| 5)                          | MB Aldrin       | 4.406  | 5.565 | 9559690  | 67140220 | 4.453    | 1.696 #    |
| 8)                          | B Heptachlo...  | 4.906f | 5.921 | 68363121 | 783.9E6  | 32.429   | 21.895 #   |
| 9)                          | A Endosulfan I  | 0.000  | 6.269 | 0        | 73853963 | N.D.     | 2.227      |
| 12)                         | B 4,4'-DDE      | 5.249f | 6.397 | 16746229 | 701.0E6  | 7.784    | 21.454 #   |
| 13)                         | MA Dieldrin     | 5.410  | 6.539 | 136.3E6  | 335.9E6  | 58.901   | 10.091 #   |
| 14)                         | MA Endrin       | 5.663  | 6.758 | 16620686 | 1466.1E6 | 8.159    | 55.467 #   |
| 15)                         | B Endosulfa...  | 5.916  | 6.962 | 95762890 | 20668239 | 46.210   | 0.753 #    |
| 16)                         | A 4,4'-DDD      | 5.849f | 6.895 | 99640904 | 756.9E6  | 56.649   | 28.914 #   |
| 17)                         | MA 4,4'-DDT     | 6.019  | 7.162 | 278.2E6  | 2203.0E6 | 152.763  | 95.522 #   |
| 19)                         | B Endosulfa...  | 6.300  | 7.297 | 1184584  | 141.4E6  | 0.641    | 5.571 #    |
| 20)                         | A Methoxychlor  | 6.513f | 7.637 | 25323696 | 2361466  | 27.422   | 0.223 #    |
| 21)                         | B Endrin ke...  | 0.000  | 7.812 | 0        | 7559159  | N.D.     | 0.317      |
| 22)                         | Toxaphene-1     | 5.535  | 6.479 | 106.4E6  | 1460.3E6 | 7801.764 | 9717.923   |
| 23)                         | Toxaphene-2     | 5.586  | 6.640 | 9653238  | 821.0E6  | 421.986  | 2833.137 # |
| 24)                         | Toxaphene-3     | 5.970  | 7.162 | 36330752 | 2203.0E6 | 954.889  | 9062.846 # |
| 25)                         | Toxaphene-4     | 6.259  | 7.162 | 4248813  | 2203.0E6 | 110.043  | 3280.414 # |
| 26)                         | Toxaphene-5     | 0.000  | 7.723 | 0        | 24746103 | N.D.     | 85.986     |
| -----                       |                 |        |       |          |          |          |            |

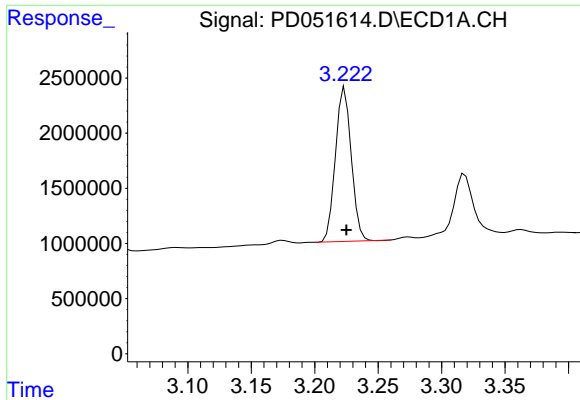
(f)=RT Delta > 1/2 Window (#)=Amounts differ by > 25% (m)=manual int.

Data Path : Z:\pestpcbsrv\HPCHEM1\ECD\_D\Data\PD030519\  
 Data File : PD051614.D  
 Signal(s) : Signal #1: ECD1A.CH Signal #2: ECD2B.CH  
 Acq On : 05 Mar 2019 16:26  
 Operator : AJ\SJ  
 Sample : K1626-09  
 Misc :  
 ALS Vial : 21 Sample Multiplier: 1

Integration File signal 1: autoint1.e  
 Integration File signal 2: autoint2.e  
 Quant Time: Mar 06 04:16:23 2019  
 Quant Method : Z:\pestpcbsrv\HPCHEM1\ECD\_D\Method\PD022219CLP.M  
 Quant Title : GC Extractables  
 QLast Update : Fri Feb 22 04:35:08 2019  
 Response via : Initial Calibration  
 Integrator: ChemStation 6890 Scale Mode: Large solvent peaks clipped

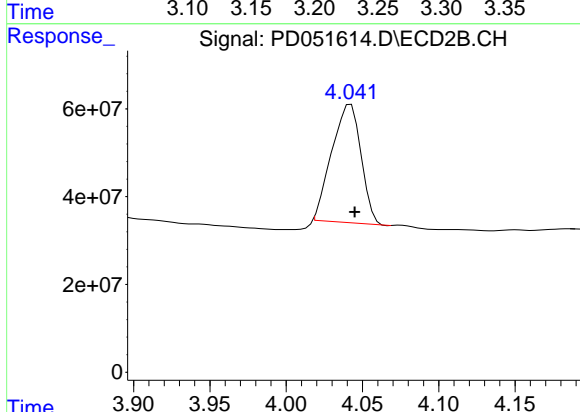
Volume Inj. : 1 µl  
 Signal #1 Phase : ZB-MR2 Signal #2 Phase: ZB-MR1  
 Signal #1 Info : 30M x 0.32mm x0.2 Signal #2 Info : 30M x 0.32mm x 0.50µm



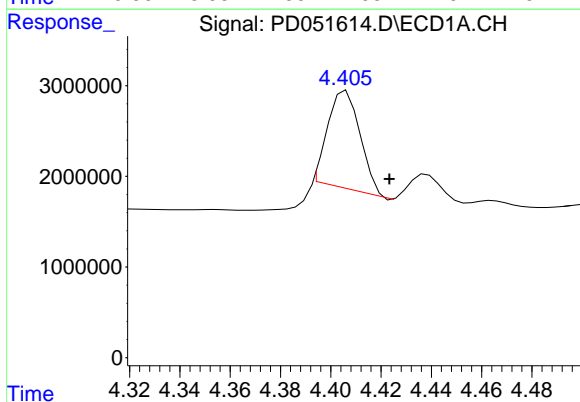


#1 Tetrachloro-m-xylene  
 R.T.: 3.224 min  
 Delta R.T.: -0.001 min  
 Response: 12141679  
 Conc: 8.45 ng/ml

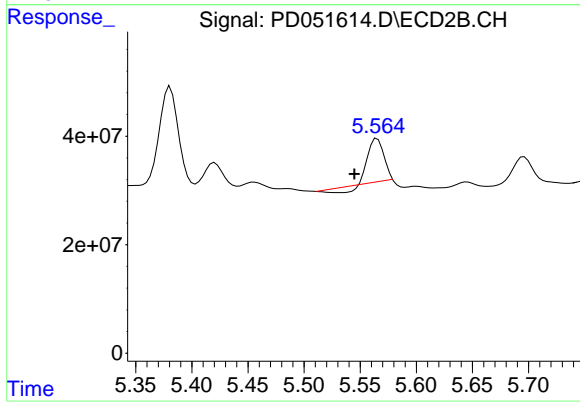
Instrument :  
 ECD\_D  
 ClientSampleId :



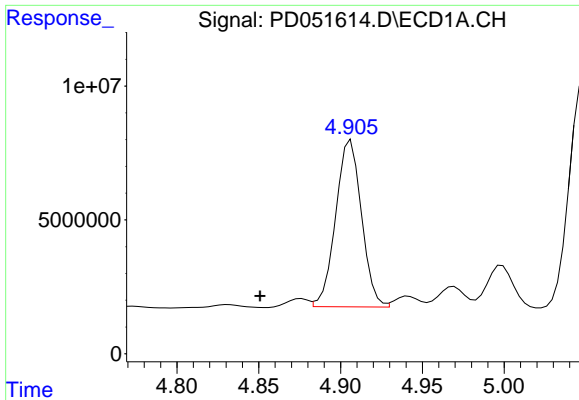
#1 Tetrachloro-m-xylene  
 R.T.: 4.042 min  
 Delta R.T.: -0.003 min  
 Response: 358559100  
 Conc: 11.61 ng/ml



#5 Aldrin  
 R.T.: 4.406 min  
 Delta R.T.: -0.017 min  
 Response: 9559690  
 Conc: 4.45 ng/ml

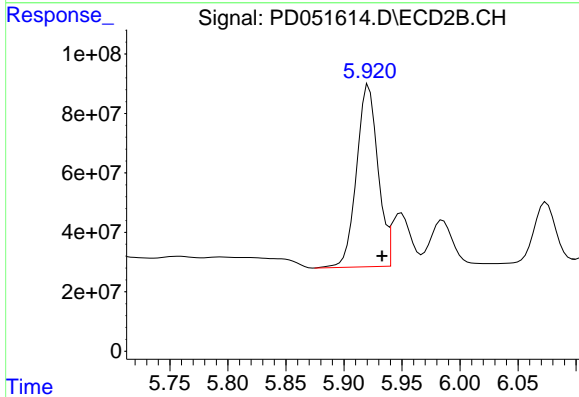


#5 Aldrin  
 R.T.: 5.565 min  
 Delta R.T.: 0.020 min  
 Response: 67140220  
 Conc: 1.70 ng/ml

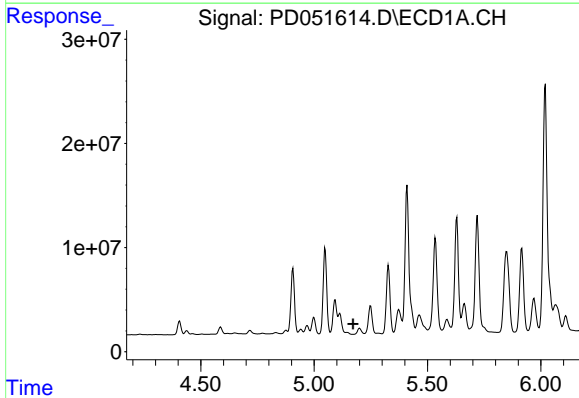


#8 Heptachlor epoxide  
 R.T.: 4.906 min  
 Delta R.T.: 0.055 min  
 Response: 68363121  
 Conc: 32.43 ng/ml

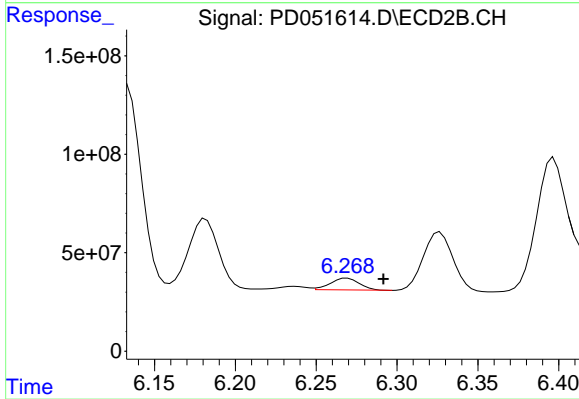
Instrument :  
 ECD\_D  
 ClientSampled :



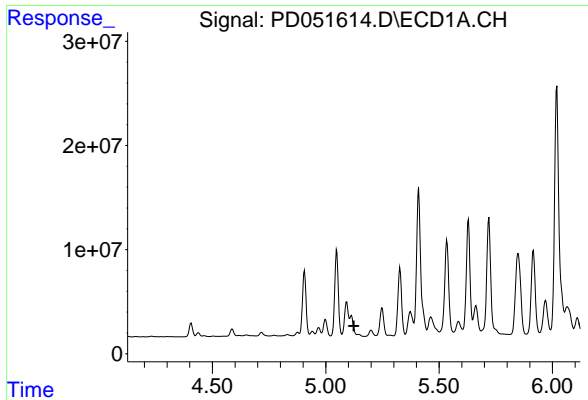
#8 Heptachlor epoxide  
 R.T.: 5.921 min  
 Delta R.T.: -0.012 min  
 Response: 783930840  
 Conc: 21.89 ng/ml



#9 Endosulfan I  
 R.T.: 0.000 min  
 Exp R.T. : 5.172 min  
 Response: 0  
 Conc: N.D.

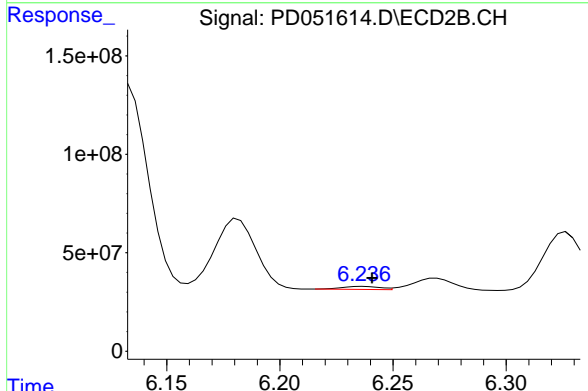


#9 Endosulfan I  
 R.T.: 6.269 min  
 Delta R.T.: -0.022 min  
 Response: 73853963  
 Conc: 2.23 ng/ml

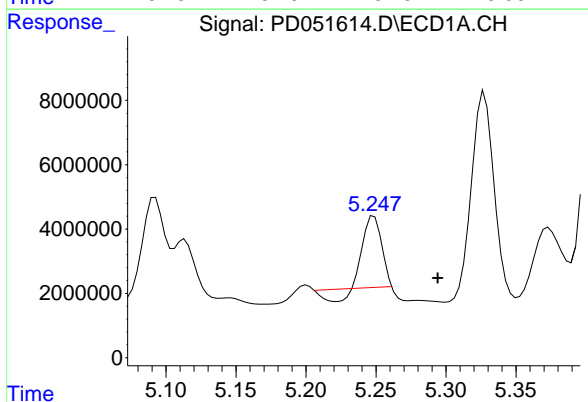


#11 cis-Chlordane  
 R.T.: 5.092 min  
 Delta R.T.: -0.032 min  
 Response: -38718617  
 Conc: N.D.

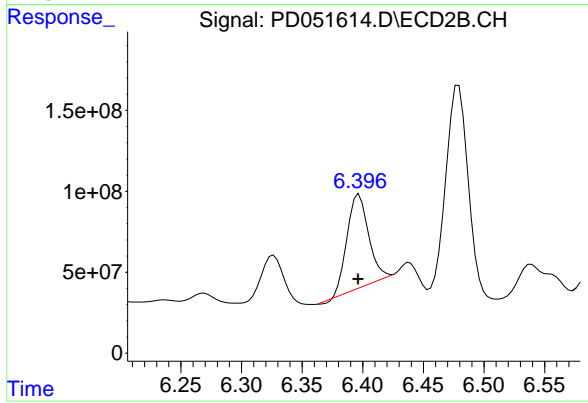
Instrument :  
 ECD\_D  
 ClientSampleId :



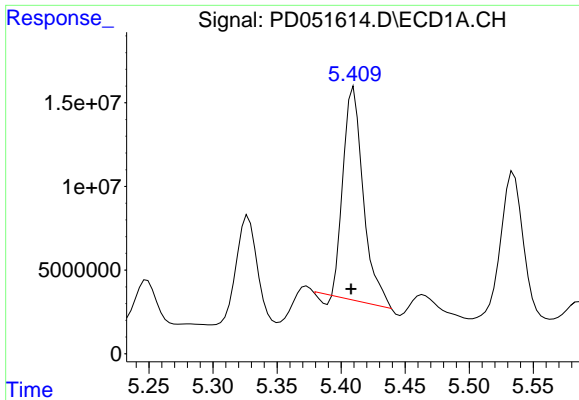
#11 cis-Chlordane  
 R.T.: 6.237 min  
 Delta R.T.: -0.004 min  
 Response: 17627878  
 Conc: 0.51 ng/ml



#12 4,4'-DDE  
 R.T.: 5.249 min  
 Delta R.T.: -0.046 min  
 Response: 16746229  
 Conc: 7.78 ng/ml

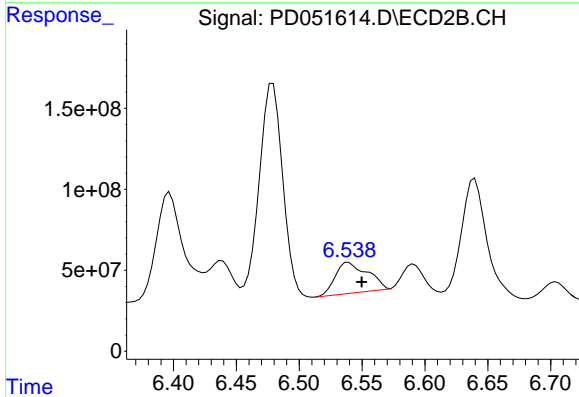


#12 4,4'-DDE  
 R.T.: 6.397 min  
 Delta R.T.: 0.000 min  
 Response: 700983813  
 Conc: 21.45 ng/ml

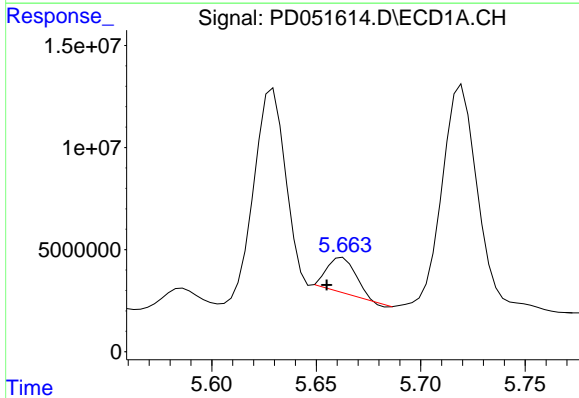


#13 Dieldrin  
 R.T.: 5.410 min  
 Delta R.T.: 0.002 min  
 Response: 136342180  
 Conc: 58.90 ng/ml

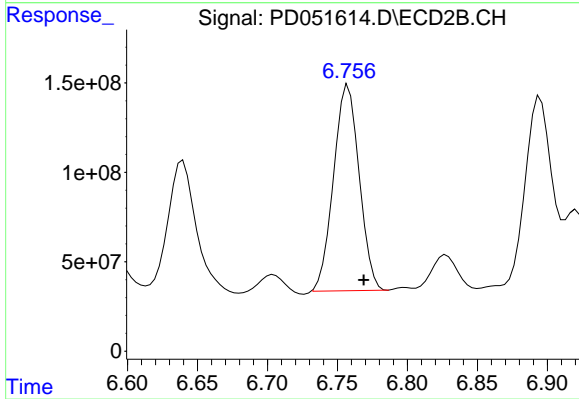
Instrument :  
 ECD\_D  
 ClientSampled :



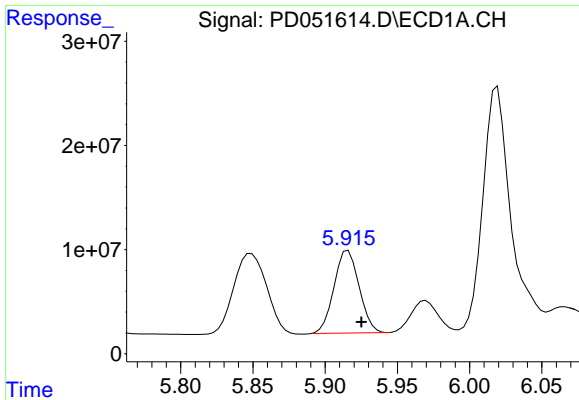
#13 Dieldrin  
 R.T.: 6.539 min  
 Delta R.T.: -0.011 min  
 Response: 335926696  
 Conc: 10.09 ng/ml



#14 Endrin  
 R.T.: 5.663 min  
 Delta R.T.: 0.008 min  
 Response: 16620686  
 Conc: 8.16 ng/ml

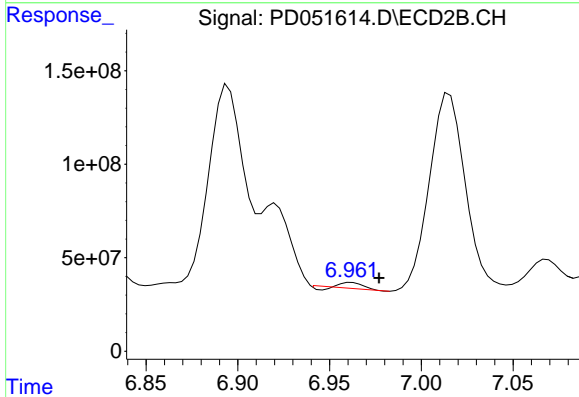


#14 Endrin  
 R.T.: 6.758 min  
 Delta R.T.: -0.011 min  
 Response: 1466058801  
 Conc: 55.47 ng/ml

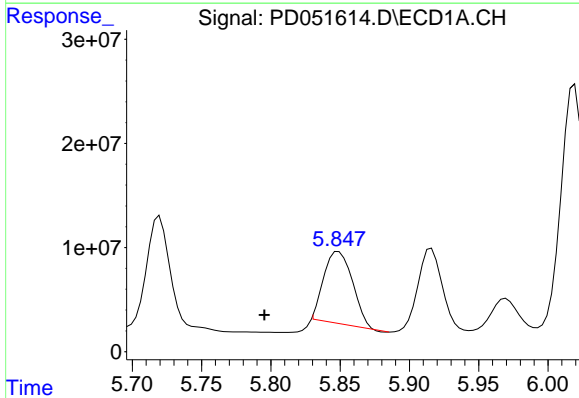


#15 Endosulfan II  
 R.T.: 5.916 min  
 Delta R.T.: -0.009 min  
 Response: 95762890  
 Conc: 46.21 ng/ml

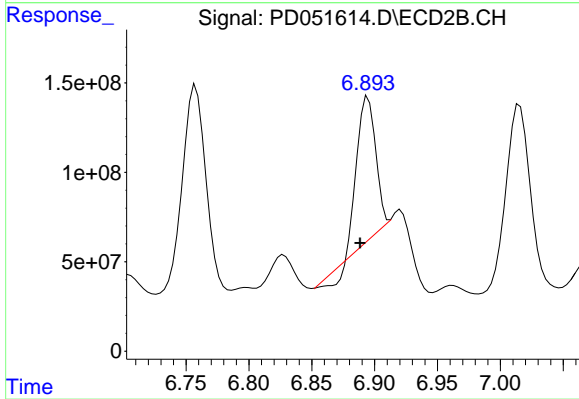
Instrument :  
 ECD\_D  
 ClientSampleId :



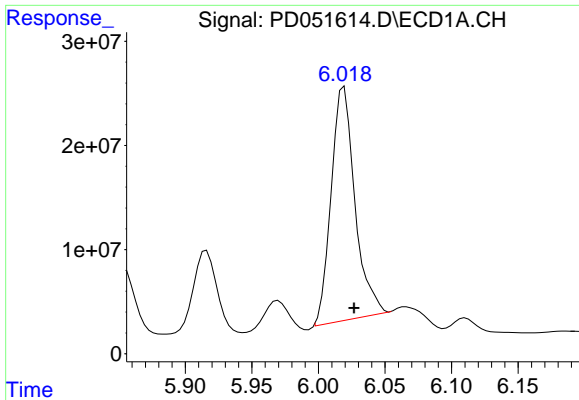
#15 Endosulfan II  
 R.T.: 6.962 min  
 Delta R.T.: -0.015 min  
 Response: 20668239  
 Conc: 0.75 ng/ml



#16 4,4'-DDD  
 R.T.: 5.849 min  
 Delta R.T.: 0.054 min  
 Response: 99640904  
 Conc: 56.65 ng/ml



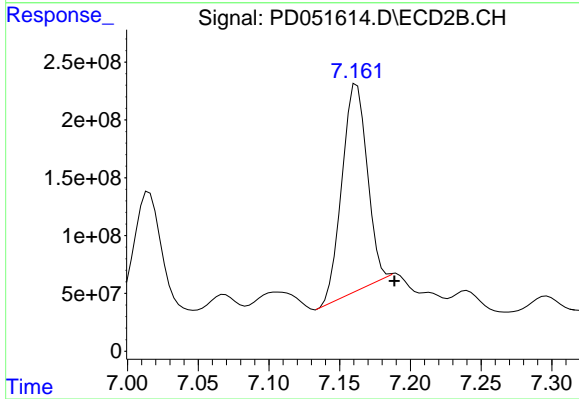
#16 4,4'-DDD  
 R.T.: 6.895 min  
 Delta R.T.: 0.006 min  
 Response: 756853039  
 Conc: 28.91 ng/ml



#17 4,4'-DDT

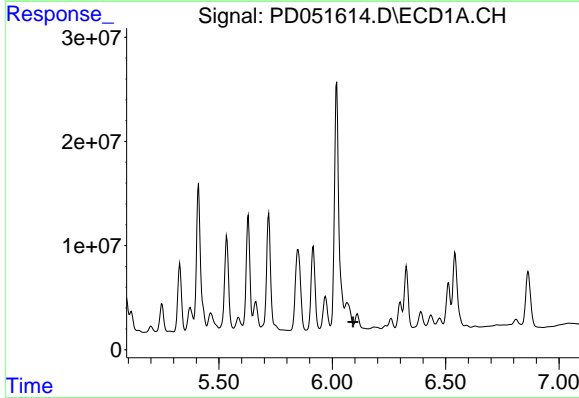
R.T.: 6.019 min  
 Delta R.T.: -0.008 min  
 Response: 278186916  
 Conc: 152.76 ng/ml

Instrument :  
 ECD\_D  
 ClientSampled :



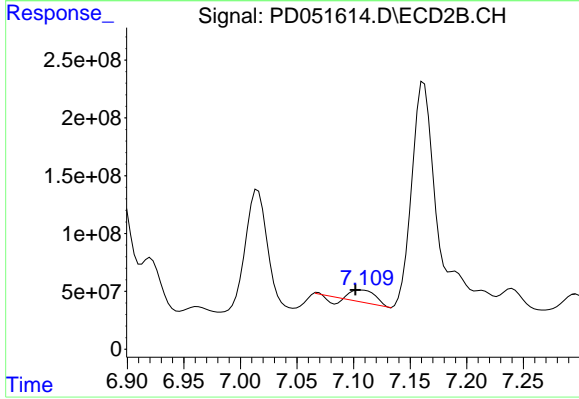
#17 4,4'-DDT

R.T.: 7.162 min  
 Delta R.T.: -0.027 min  
 Response: 2203033895  
 Conc: 95.52 ng/ml



#18 Endrin aldehyde

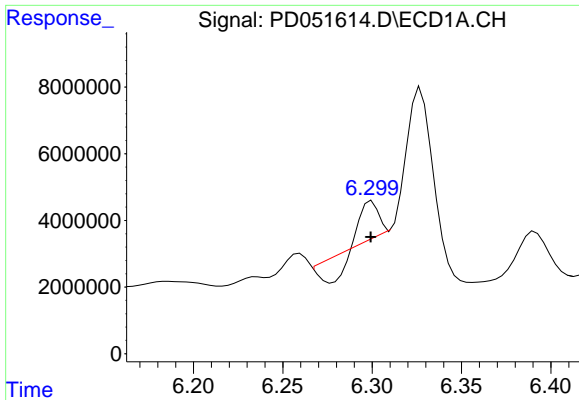
R.T.: 6.110 min  
 Delta R.T.: 0.019 min  
 Response: -18387039  
 Conc: N.D.



#18 Endrin aldehyde

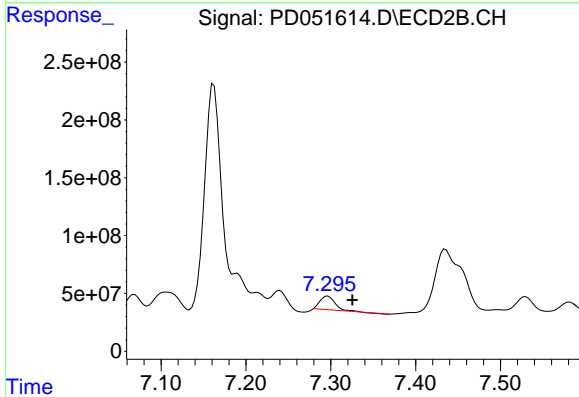
R.T.: 7.106 min  
 Delta R.T.: 0.005 min  
 Response: 134511117  
 Conc: 5.99 ng/ml



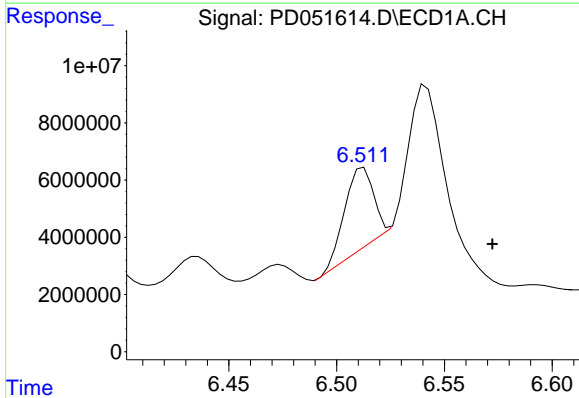


#19 Endosulfan Sulfate  
 R.T.: 6.300 min  
 Delta R.T.: 0.000 min  
 Response: 1184584  
 Conc: 0.64 ng/ml

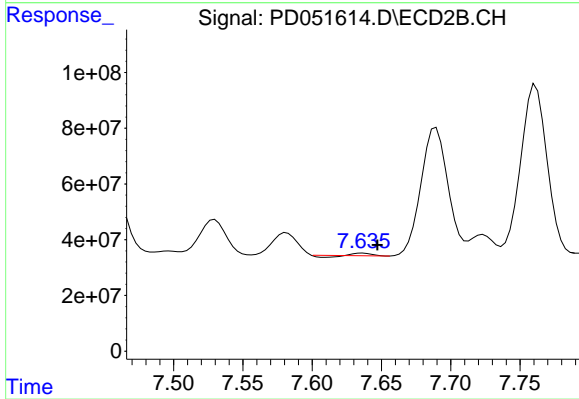
Instrument :  
 ECD\_D  
 ClientSampleId :



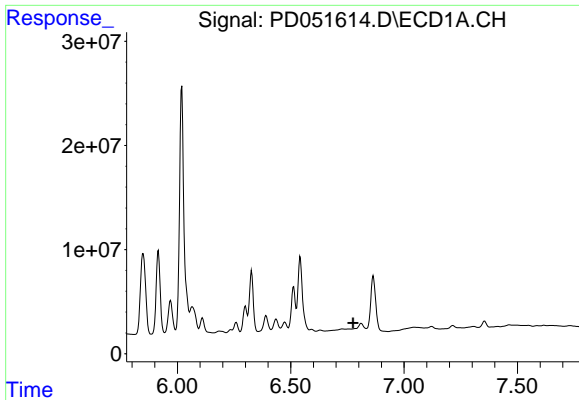
#19 Endosulfan Sulfate  
 R.T.: 7.297 min  
 Delta R.T.: -0.029 min  
 Response: 141431641  
 Conc: 5.57 ng/ml



#20 Methoxychlor  
 R.T.: 6.513 min  
 Delta R.T.: -0.060 min  
 Response: 25323696  
 Conc: 27.42 ng/ml



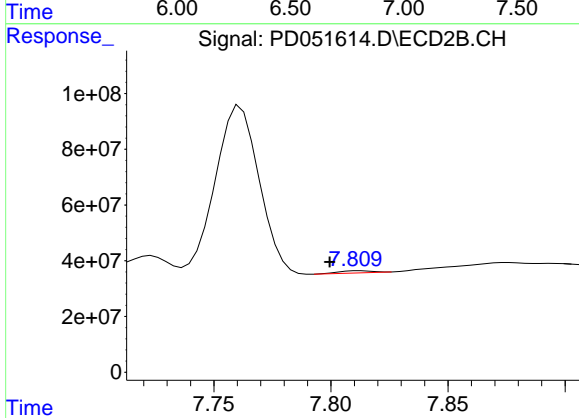
#20 Methoxychlor  
 R.T.: 7.637 min  
 Delta R.T.: -0.011 min  
 Response: 2361466  
 Conc: 0.22 ng/ml



#21 Endrin ketone

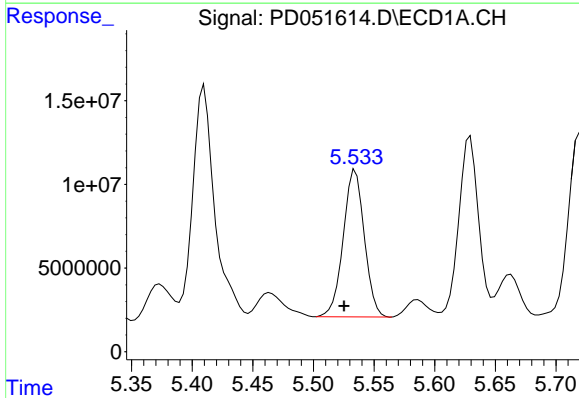
R.T.: 0.000 min  
 Exp R.T.: 6.775 min  
 Response: 0  
 Conc: N.D.

Instrument :  
 ECD\_D  
 ClientSampleId :



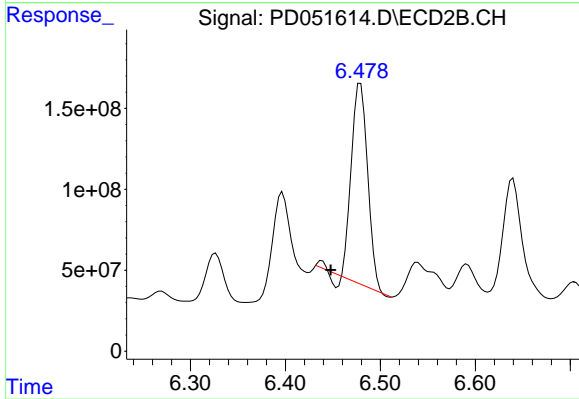
#21 Endrin ketone

R.T.: 7.812 min  
 Delta R.T.: 0.013 min  
 Response: 7559159  
 Conc: 0.32 ng/ml



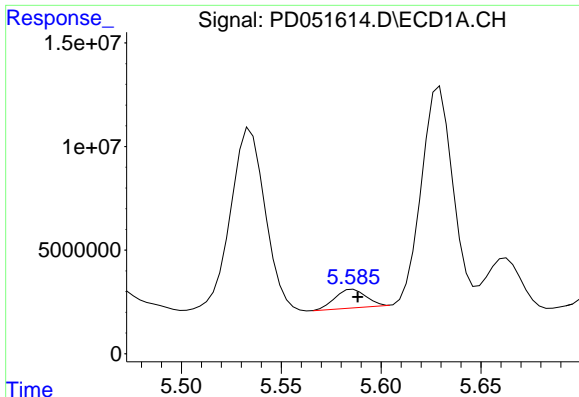
#22 Toxaphene-1

R.T.: 5.535 min  
 Delta R.T.: 0.010 min  
 Response: 106386457  
 Conc: 7801.76 ng/ml



#22 Toxaphene-1

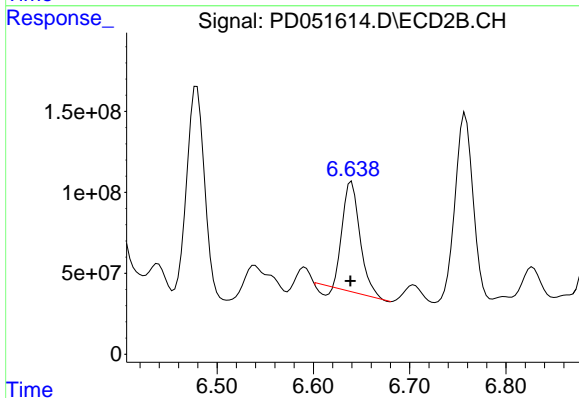
R.T.: 6.479 min  
 Delta R.T.: 0.031 min  
 Response: 1460344365  
 Conc: 9717.92 ng/ml



#23 Toxaphene-2

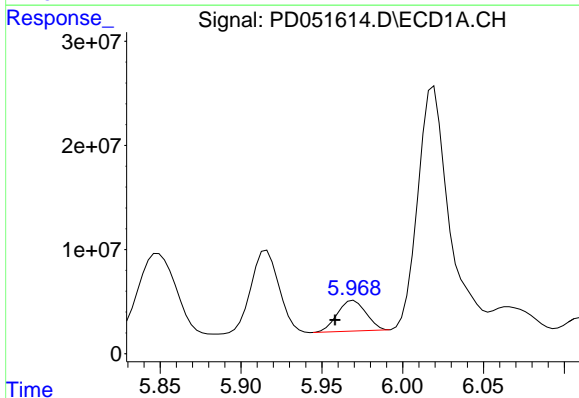
R.T.: 5.586 min  
 Delta R.T.: -0.002 min  
 Response: 9653238  
 Conc: 421.99 ng/ml

Instrument :  
 ECD\_D  
 ClientSampleId :



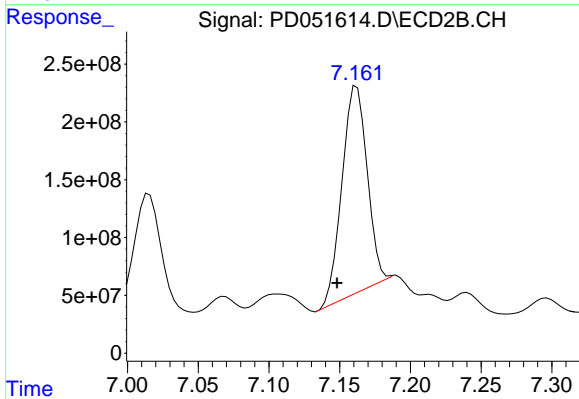
#23 Toxaphene-2

R.T.: 6.640 min  
 Delta R.T.: 0.001 min  
 Response: 820960956  
 Conc: 2833.14 ng/ml



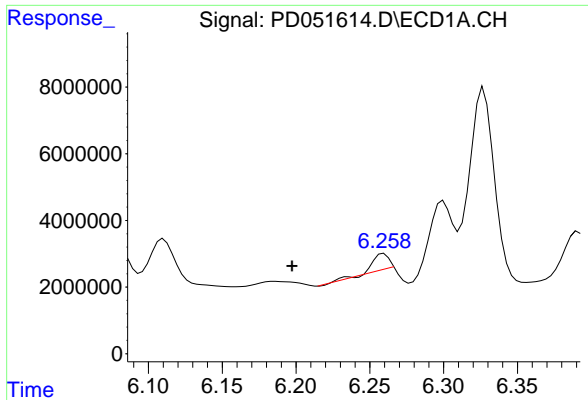
#24 Toxaphene-3

R.T.: 5.970 min  
 Delta R.T.: 0.012 min  
 Response: 36330752  
 Conc: 954.89 ng/ml



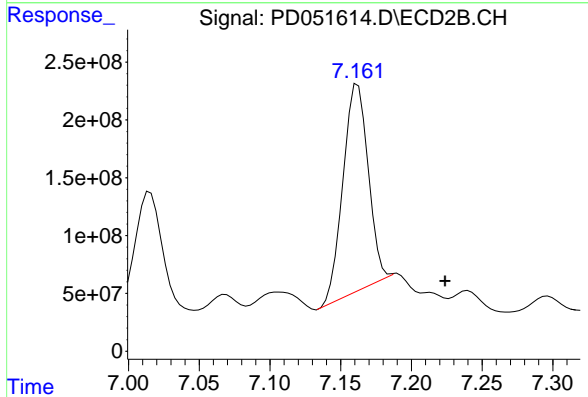
#24 Toxaphene-3

R.T.: 7.162 min  
 Delta R.T.: 0.014 min  
 Response: 2203033895  
 Conc: 9062.85 ng/ml

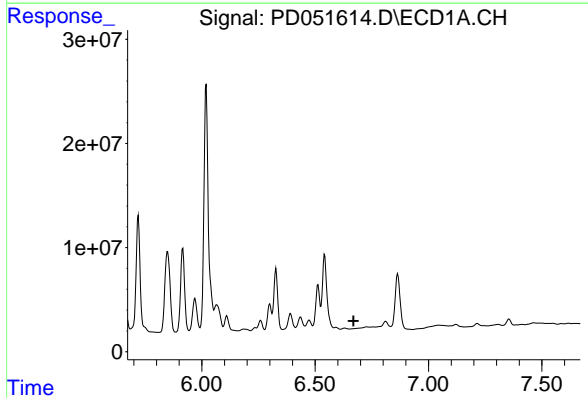


#25 Toxaphene-4  
 R.T.: 6.259 min  
 Delta R.T.: 0.062 min  
 Response: 4248813  
 Conc: 110.04 ng/ml

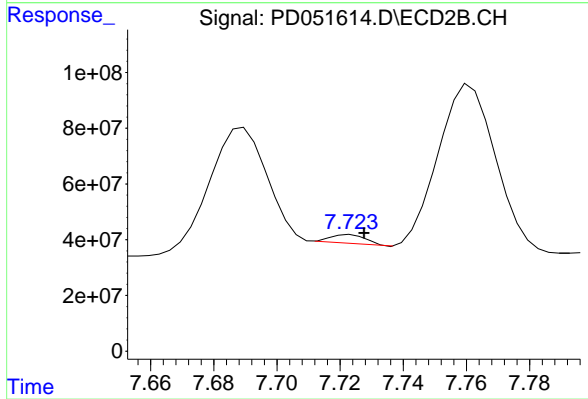
Instrument :  
 ECD\_D  
 ClientSampled :



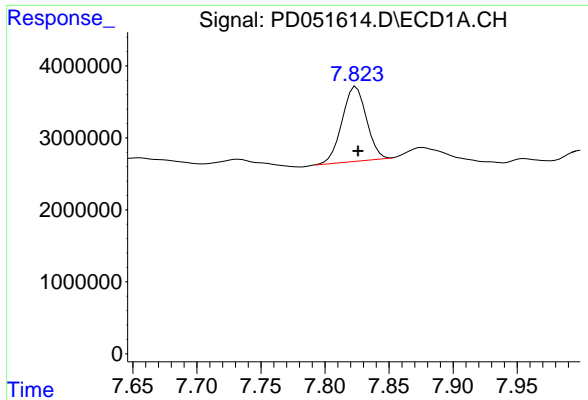
#25 Toxaphene-4  
 R.T.: 7.162 min  
 Delta R.T.: -0.062 min  
 Response: 2203033895  
 Conc: 3280.41 ng/ml



#26 Toxaphene-5  
 R.T.: 0.000 min  
 Exp R.T. : 6.670 min  
 Response: 0  
 Conc: N.D.



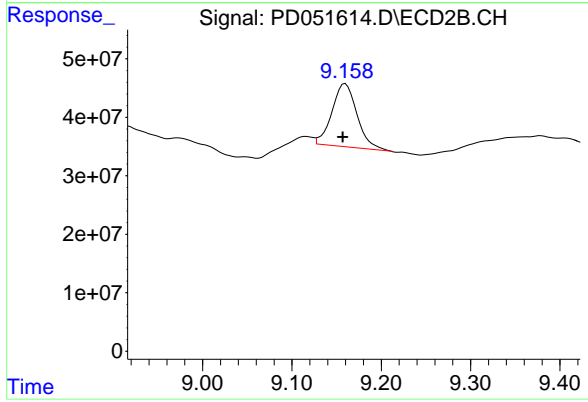
#26 Toxaphene-5  
 R.T.: 7.723 min  
 Delta R.T.: -0.004 min  
 Response: 24746103  
 Conc: 85.99 ng/ml



#27 Decachlorobiphenyl

R.T.: 7.824 min  
Delta R.T.: -0.002 min  
Response: 13698583  
Conc: 11.39 ng/ml

Instrument :  
ECD\_D  
ClientSampleId :



#27 Decachlorobiphenyl

R.T.: 9.160 min  
Delta R.T.: 0.003 min  
Response: 209386492  
Conc: 11.05 ng/ml