

Data Path : Z:\pestpcbsrv\HPCHEM1\ECD_D\Data\PD030521\
 Data File : PD061442.D
 Signal(s) : Signal #1: ECD1A.ch Signal #2: ECD2B.ch
 Acq On : 05 Mar 2021 10:52
 Operator : AR\AJ
 Sample : PB134937BS
 Misc :
 ALS Vial : 6 Sample Multiplier: 1

Instrument :
 ECD_D
ClientSampled :
 PLCS937

Manual Integrations
APPROVED
 Ankita
 3/8/2021 12:09:36 PM

Integration File signal 1: autoint1.e
 Integration File signal 2: autoint2.e
 Quant Time: Mar 06 06:01:09 2021
 Quant Method : Z:\pestpcbsrv\HPCHEM1\ECD_D\Method\PD030421CLP.M
 Quant Title : GC Extractables
 QLast Update : Fri Mar 05 05:53:14 2021
 Response via : Initial Calibration
 Integrator: ChemStation

Volume Inj. : 1 µl
 Signal #1 Phase : ZB-MR2 Signal #2 Phase: ZB-MR1
 Signal #1 Info : 30M x 0.32mm x0.2 Signal #2 Info : 30M x 0.32mm x 0.50µm

	Compound	RT#1	RT#2	Resp#1	Resp#2	ng/ml	ng/ml

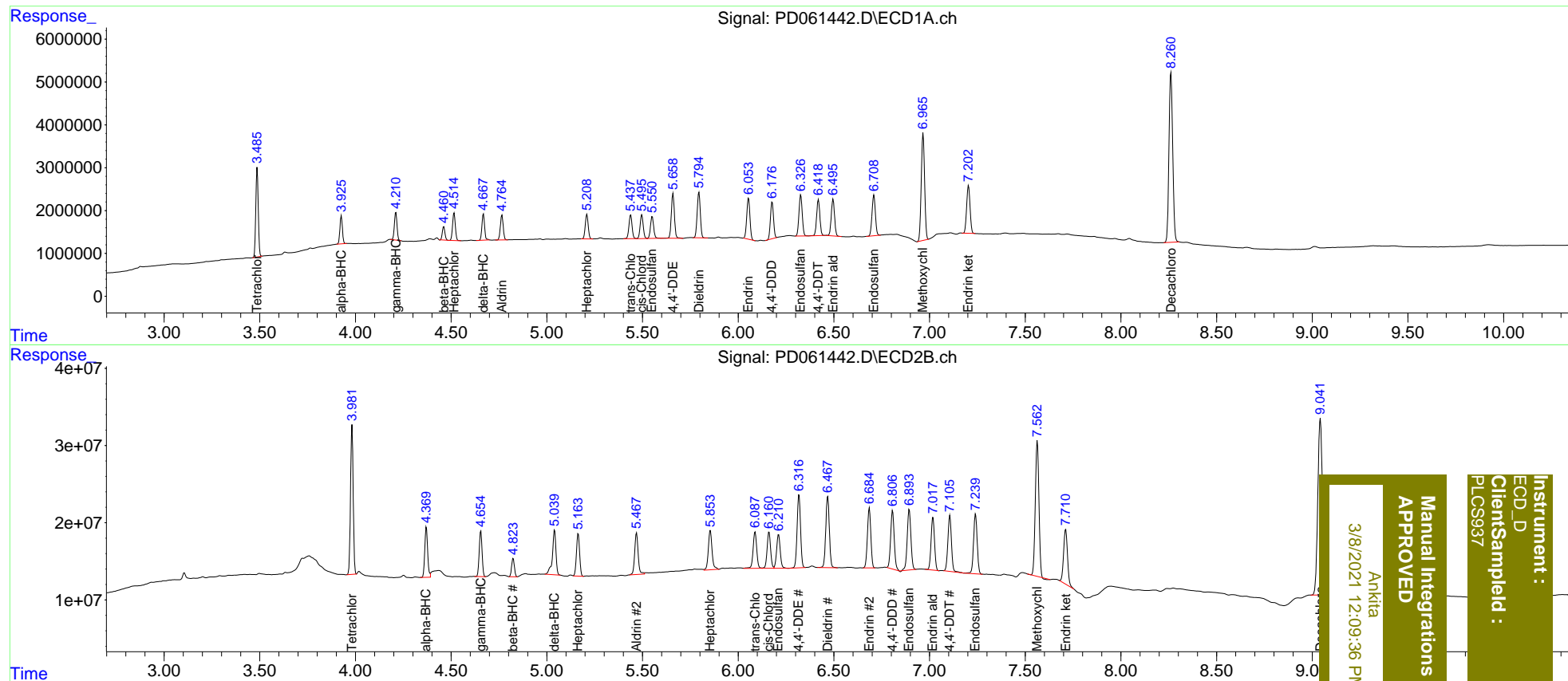
System Monitoring Compounds							
1)	SA Tetrachlo...	3.487	3.982	18546683	186.5E6	20.415	19.963
27)	SA Decachlor...	8.262	9.042	54305686	391.2E6	40.547	41.828
Target Compounds							
2)	A alpha-BHC	3.926	4.371	5978934	67811582	4.548	4.690
3)	MA gamma-BHC...	4.211	4.655	6176283	61239733	4.757	4.622
4)	MA Heptachlor	4.515	5.164	6437741	62973632	4.779	4.623
5)	MB Aldrin	4.766	5.469	5938502	67735380	4.603	5.109
6)	B beta-BHC	4.461	4.824	2942849	24066728	4.453	4.272
7)	B delta-BHC	4.669	5.041	5976978	74522218	4.508	5.305
8)	B Heptachlo...	5.210	5.855	6117966	69710855	4.791	5.733
9)	A Endosulfan I	5.551	6.211	5982353	57607167	4.971	5.058
10)	B trans-Chl...	5.437	6.088	6262486	62215639	4.659m	4.820
11)	B cis-Chlor...	5.496	6.161	6243678	59563468	4.787	4.901
12)	B 4,4'-DDE	5.660	6.318	11734810	118.2E6	9.342	9.698
13)	MA Dieldrin	5.795	6.468	12102875	119.9E6	9.159	9.861
14)	MA Endrin	6.054	6.686	11051044	96050268	9.555	9.450
15)	B Endosulfa...	6.327	6.894	11395238	104.9E6	9.984	10.709
16)	A 4,4'-DDD	6.178	6.807	9620690	97742757	9.248	10.137
17)	MA 4,4'-DDT	6.419	7.106	9853232	93628908	8.875	9.615
18)	B Endrin al...	6.496	7.018	10148731	85823611	10.436	10.143
19)	B Endosulfa...	6.709	7.241	11471741	102.2E6	9.942	10.450
20)	A Methoxychlor	6.966	7.564	30308470	230.8E6	49.697	50.641
21)	B Endrin ke...	7.204	7.712	13716784	99651497	10.385	10.393

(f)=RT Delta > 1/2 Window (#)=Amounts differ by > 25% (m)=manual int.

Data Path : Z:\pestpcbsrv\HPCHEM1\ECD_D\Data\PD030521\
 Data File : PD061442.D
 Signal(s) : Signal #1: ECD1A.ch Signal #2: ECD2B.ch
 Acq On : 05 Mar 2021 10:52
 Operator : AR\AJ
 Sample : PB134937BS
 Misc :
 ALS Vial : 6 Sample Multiplier: 1

Integration File signal 1: autoint1.e
 Integration File signal 2: autoint2.e
 Quant Time: Mar 06 06:01:09 2021
 Quant Method : Z:\pestpcbsrv\HPCHEM1\ECD_D\Method\PD030421CLP.M
 Quant Title : GC Extractables
 QLast Update : Fri Mar 05 05:53:14 2021
 Response via : Initial Calibration
 Integrator: ChemStation

Volume Inj. : 1 µl
 Signal #1 Phase : ZB-MR2 Signal #2 Phase: ZB-MR1
 Signal #1 Info : 30M x 0.32mm x0.2 Signal #2 Info : 30M x 0.32mm x 0.50µm



Instrument : ECD_D
 Client Sample Id : PLCS937
 Manual Integrations APPROVED
 Ankitia
 3/8/2021 12:09:36 PM