

Data Path : Z:\pestpcbsrv\HPCHEM1\ECD_D\Data\PD030620\
 Data File : PD057506.D
 Signal(s) : Signal #1: ECD1A.ch Signal #2: ECD2B.ch
 Acq On : 06 Mar 2020 18:45
 Operator : AJ\MA
 Sample : TOXAPH401
 Misc :
 ALS Vial : 8 Sample Multiplier: 1

Instrument :
 ECD_D
 ClientSampleId :
 TOXAPH401

Integration File signal 1: autoint1.e
 Integration File signal 2: autoint2.e
 Quant Time: Mar 09 04:14:49 2020
 Quant Method : Z:\pestpcbsrv\HPCHEM1\ECD_D\Method\PD030620CLP.M
 Quant Title : GC Extractables
 QLast Update : Mon Mar 09 04:13:42 2020
 Response via : Initial Calibration
 Integrator: ChemStation

Volume Inj. : 1 µl
 Signal #1 Phase : ZB-MR2 Signal #2 Phase: ZB-MR1
 Signal #1 Info : 30M x 0.32mm x0.2 Signal #2 Info : 30M x 0.32mm x 0.50µm

Compound	RT#1	RT#2	Resp#1	Resp#2	ng/ml	ng/ml

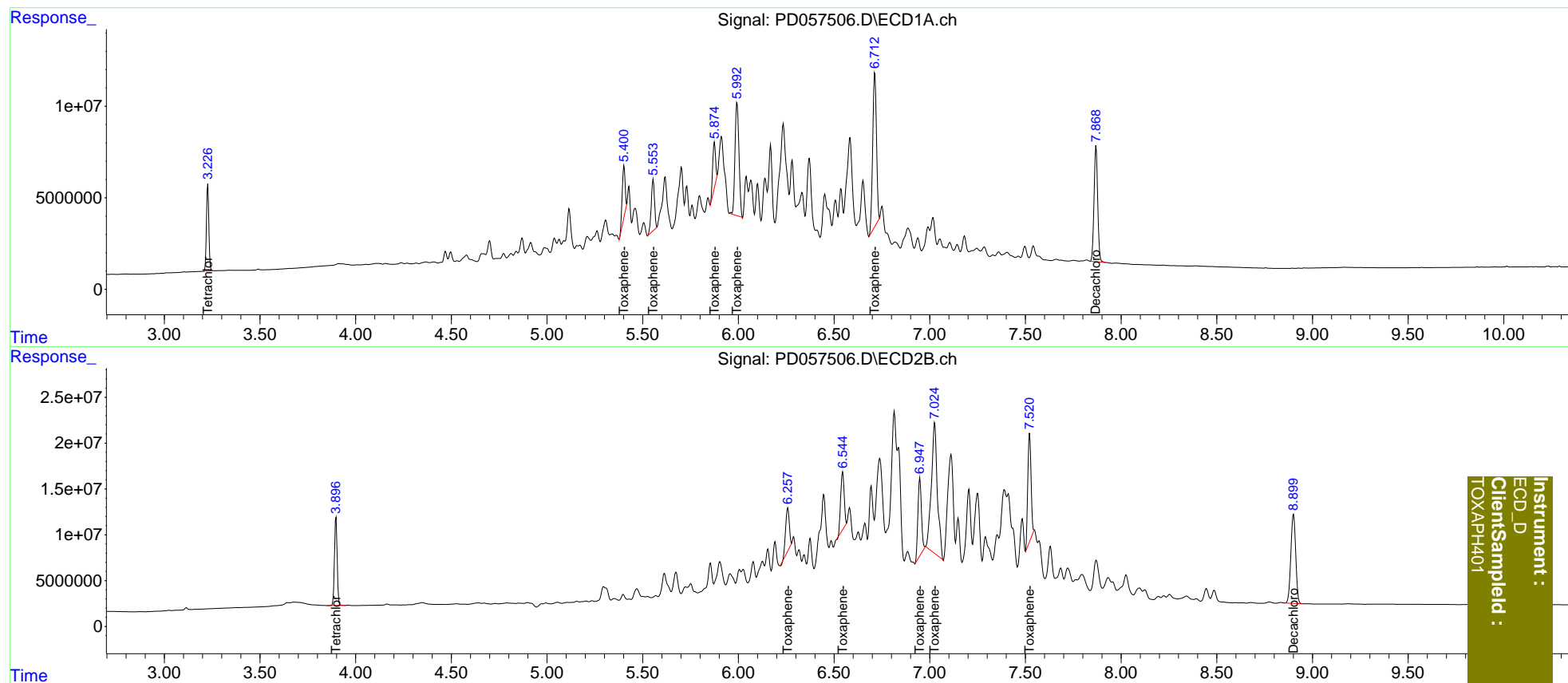
System Monitoring Compounds						
1) SA Tetrachlo...	3.228	3.897	41343271	94632336	39.785	39.503
27) SA Decachlor...	7.869	8.901	83225989	171.9E6	77.553	75.882
Target Compounds						
22) Toxaphene-1	5.402	6.258	28897069	61114721	4015.571	3661.760
23) Toxaphene-2	5.555	6.545	32764576	80152780	4012.966	3727.520
24) Toxaphene-3	5.875	6.948	25080145	107.3E6	3793.588	3844.310
25) Toxaphene-4	5.993	7.026	89133509	310.0E6	4092.801	4030.231
26) Toxaphene-5	6.713	7.522	114.5E6	142.7E6	4057.955	4043.439

(f)=RT Delta > 1/2 Window (#)=Amounts differ by > 25% (m)=manual int.

Data Path : Z:\pestpcbsrv\HPCHEM1\ECD_D\Data\PD030620\
 Data File : PD057506.D
 Signal(s) : Signal #1: ECD1A.ch Signal #2: ECD2B.ch
 Acq On : 06 Mar 2020 18:45
 Operator : AJ\MA
 Sample : TOXAPH401
 Misc :
 ALS Vial : 8 Sample Multiplier: 1

Integration File signal 1: autoint1.e
 Integration File signal 2: autoint2.e
 Quant Time: Mar 09 04:14:49 2020
 Quant Method : Z:\pestpcbsrv\HPCHEM1\ECD_D\Method\PD030620CLP.M
 Quant Title : GC Extractables
 QLast Update : Mon Mar 09 04:13:42 2020
 Response via : Initial Calibration
 Integrator: ChemStation

Volume Inj. : 1 µl
 Signal #1 Phase : ZB-MR2 Signal #2 Phase: ZB-MR1
 Signal #1 Info : 30M x 0.32mm x0.2 Signal #2 Info : 30M x 0.32mm x 0.50µm



Instrument :
 ECD_D
 ClientSampleId :
 TOXAPH401