

Data Path : Z:\pestpcbsrv\HPCHEM1\ECD_D\Data\PD030620\
 Data File : PD057507.D
 Signal(s) : Signal #1: ECD1A.ch Signal #2: ECD2B.ch
 Acq On : 06 Mar 2020 18:59
 Operator : AJ\MA
 Sample : TOXAPH501
 Misc :
 ALS Vial : 9 Sample Multiplier: 1

Instrument :
 ECD_D
 ClientSampleId :
 TOXAPH501

Integration File signal 1: autoint1.e
 Integration File signal 2: autoint2.e
 Quant Time: Mar 09 04:15:04 2020
 Quant Method : Z:\pestpcbsrv\HPCHEM1\ECD_D\Method\PD030620CLP.M
 Quant Title : GC Extractables
 QLast Update : Mon Mar 09 04:13:42 2020
 Response via : Initial Calibration
 Integrator: ChemStation

Volume Inj. : 1 µl
 Signal #1 Phase : ZB-MR2 Signal #2 Phase: ZB-MR1
 Signal #1 Info : 30M x 0.32mm x0.2 Signal #2 Info : 30M x 0.32mm x 0.50µm

Compound	RT#1	RT#2	Resp#1	Resp#2	ng/ml	ng/ml

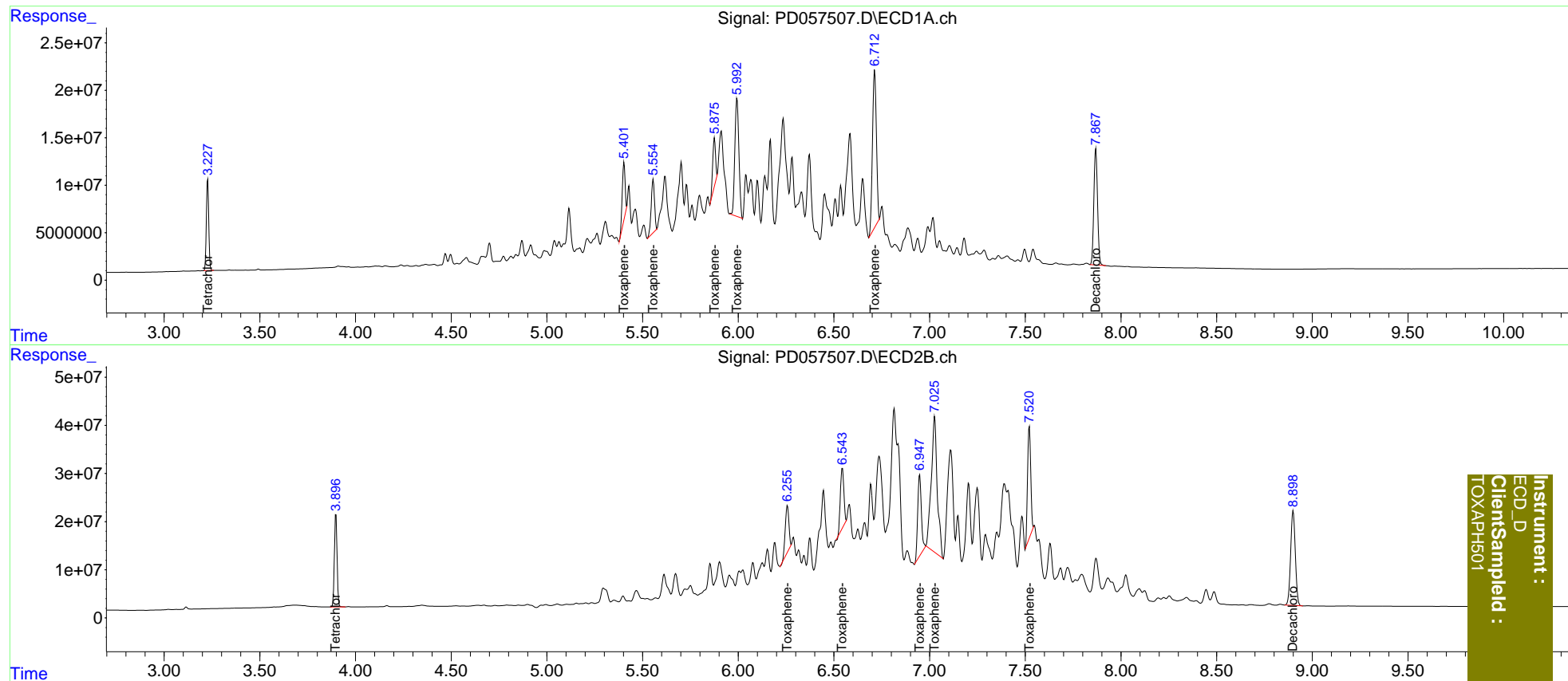
System Monitoring Compounds						
1) SA Tetrachlo...	3.228	3.898	83945049	189.7E6	80.781	79.194
27) SA Decachlor...	7.869	8.900	164.1E6	334.2E6	152.928	147.560
Target Compounds						
22) Toxaphene-1	5.403	6.257	61165227	125.6E6	8499.592	7528.010
23) Toxaphene-2	5.556	6.544	67141770	158.1E6	8223.443	7351.197
24) Toxaphene-3	5.876	6.948	50181017	221.9E6	7590.312	7948.668
25) Toxaphene-4	5.994	7.027	182.9E6	611.7E6	8398.554	7952.040
26) Toxaphene-5	6.713	7.522	235.4E6	265.2E6	8344.458	7514.297

(f)=RT Delta > 1/2 Window (#)=Amounts differ by > 25% (m)=manual int.

Data Path : Z:\pestpcbsrv\HPCHEM1\ECD_D\Data\PD030620\
 Data File : PD057507.D
 Signal(s) : Signal #1: ECD1A.ch Signal #2: ECD2B.ch
 Acq On : 06 Mar 2020 18:59
 Operator : AJ\MA
 Sample : TOXAPH501
 Misc :
 ALS Vial : 9 Sample Multiplier: 1

Integration File signal 1: autoint1.e
 Integration File signal 2: autoint2.e
 Quant Time: Mar 09 04:15:04 2020
 Quant Method : Z:\pestpcbsrv\HPCHEM1\ECD_D\Method\PD030620CLP.M
 Quant Title : GC Extractables
 QLast Update : Mon Mar 09 04:13:42 2020
 Response via : Initial Calibration
 Integrator: ChemStation

Volume Inj. : 1 µl
 Signal #1 Phase : ZB-MR2 Signal #2 Phase: ZB-MR1
 Signal #1 Info : 30M x 0.32mm x0.2 Signal #2 Info : 30M x 0.32mm x 0.50µm



Instrument :
 ECD_D
 ClientSampleId :
 TOXAPH501