

Data Path : Z:\pestpcbsrv\HPCHEM1\ECD_D\Data\PD030620\
 Data File : PD057512.D
 Signal(s) : Signal #1: ECD1A.ch Signal #2: ECD2B.ch
 Acq On : 06 Mar 2020 20:10
 Operator : AJ\MA
 Sample : INDA301
 Misc :
 ALS Vial : 14 Sample Multiplier: 1

Instrument :
 ECD_D
 ClientSampleID :
 INDA301

Integration File signal 1: autoint1.e
 Integration File signal 2: autoint2.e
 Quant Time: Mar 09 05:32:16 2020
 Quant Method : Z:\pestpcbsrv\HPCHEM1\ECD_D\Method\PD030620CLP.M
 Quant Title : GC Extractables
 QLast Update : Mon Mar 09 05:31:06 2020
 Response via : Initial Calibration
 Integrator: ChemStation

Volume Inj. : 1 µl
 Signal #1 Phase : ZB-MR2 Signal #2 Phase: ZB-MR1
 Signal #1 Info : 30M x 0.32mm x0.2 Signal #2 Info : 30M x 0.32mm x 0.50µm

	Compound	RT#1	RT#2	Resp#1	Resp#2	ng/ml	ng/ml

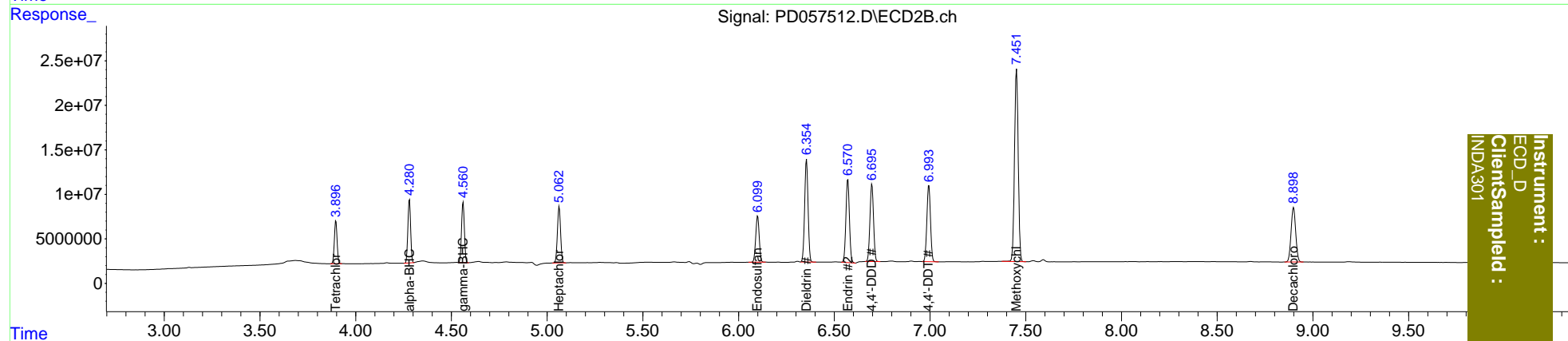
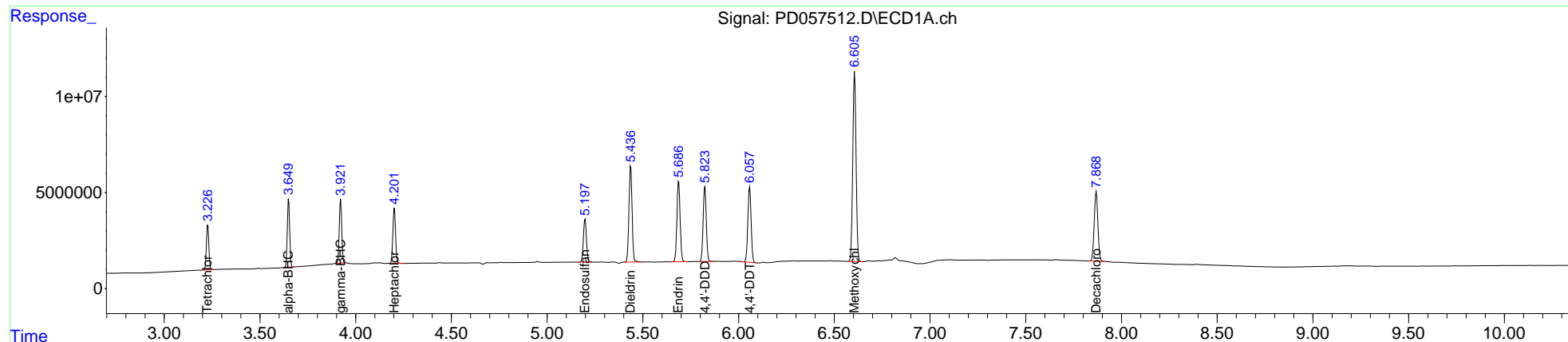
System Monitoring Compounds							
1)	SA Tetrachlo...	3.228	3.897	20742657	47829353	20.000	20.000
27)	SA Decachlor...	7.869	8.899	48375262	102.7E6	40.000	40.000
Target Compounds							
2)	A alpha-BHC	3.650	4.281	30713765	71105022	20.000	20.000
3)	MA gamma-BHC...	3.922	4.562	29981475	70202907	20.000	20.000
4)	MA Heptachlor	4.203	5.063	27836537	72595001	20.000	20.000
9)	A Endosulfan I	5.198	6.100	24804374	65495528	20.000	20.000
13)	MA Dieldrin	5.437	6.355	56709655	143.0E6	40.000	40.000
14)	MA Endrin	5.687	6.571	48738762	118.7E6	40.000	40.000
16)	A 4,4'-DDD	5.825	6.697	44642478	112.5E6	40.000	40.000
17)	MA 4,4'-DDT	6.059	6.994	46340262	112.8E6	40.000	40.000
20)	A Methoxychlor	6.606	7.452	117.9E6	292.1E6	200.000	200.000

(f)=RT Delta > 1/2 Window (#)=Amounts differ by > 25% (m)=manual int.

Data Path : Z:\pestpcbsrv\HPCHEM1\ECD_D\Data\PD030620\
 Data File : PD057512.D
 Signal(s) : Signal #1: ECD1A.ch Signal #2: ECD2B.ch
 Acq On : 06 Mar 2020 20:10
 Operator : AJ\MA
 Sample : INDA301
 Misc :
 ALS Vial : 14 Sample Multiplier: 1

Integration File signal 1: autoint1.e
 Integration File signal 2: autoint2.e
 Quant Time: Mar 09 05:32:16 2020
 Quant Method : Z:\pestpcbsrv\HPCHEM1\ECD_D\Method\PD030620CLP.M
 Quant Title : GC Extractables
 QLast Update : Mon Mar 09 05:31:06 2020
 Response via : Initial Calibration
 Integrator: ChemStation

Volume Inj. : 1 µl
 Signal #1 Phase : ZB-MR2 Signal #2 Phase: ZB-MR1
 Signal #1 Info : 30M x 0.32mm x0.2 Signal #2 Info : 30M x 0.32mm x 0.50µm



Instrument :
 ECD_D
 ClientSampleId :
 INDA301