

Data Path : Z:\pestpcbsrv\HPCHEM1\ECD\_D\Data\PD030719\  
 Data File : PD051644.D  
 Signal(s) : Signal #1: ECD1A.CH Signal #2: ECD2B.CH  
 Acq On : 07 Mar 2019 15:53  
 Operator : AJ\SJ  
 Sample : INDA321  
 Misc :  
 ALS Vial : 25 Sample Multiplier: 1

Instrument :  
 ECD\_D  
 ClientSampleId :  
 INDA321

Integration File signal 1: autoint1.e  
 Integration File signal 2: autoint2.e  
 Quant Time: Mar 08 00:13:11 2019  
 Quant Method : Z:\pestpcbsrv\HPCHEM1\ECD\_D\Method\PD022219CLP.M  
 Quant Title : GC Extractables  
 QLast Update : Fri Feb 22 04:35:08 2019  
 Response via : Initial Calibration  
 Integrator: ChemStation 6890 Scale Mode: Large solvent peaks clipped

Volume Inj. : 1 µl  
 Signal #1 Phase : ZB-MR2 Signal #2 Phase: ZB-MR1  
 Signal #1 Info : 30M x 0.32mm x0.2 Signal #2 Info : 30M x 0.32mm x 0.50µm

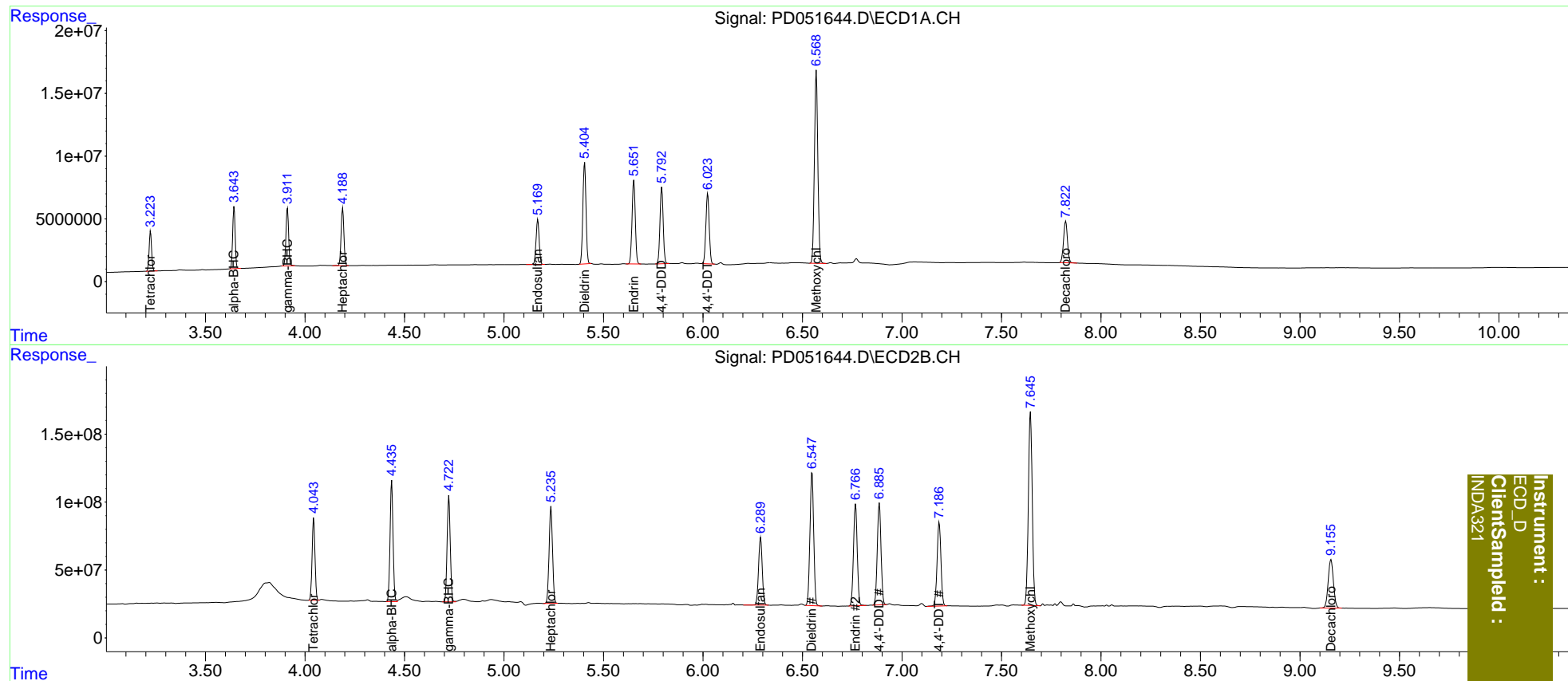
Compound	RT#1	RT#2	Resp#1	Resp#2	ng/ml	ng/ml
-----						
System Monitoring Compounds						
1) SA Tetrachlo...	3.224	4.044	27918625	614.5E6	19.428	19.891
27) SA Decachlor...	7.823	9.156	45236688	650.9E6	37.614	34.333
Target Compounds						
2) A alpha-BHC	3.644	4.436	43058045	935.8E6	19.427	20.028
3) MA gamma-BHC...	3.912	4.723	42683879	849.0E6	20.278	19.873
4) MA Heptachlor	4.190	5.237	44686145	859.2E6	20.547	20.084
9) A Endosulfan I	5.170	6.290	39207393	644.5E6	19.187	19.431
13) MA Dieldrin	5.406	6.548	89479005	1286.6E6	38.656	38.650
14) MA Endrin	5.653	6.767	75174682	976.6E6	36.903	36.949
16) A 4,4'-DDD	5.793	6.887	68226161	974.9E6	38.789	37.244
17) MA 4,4'-DDT	6.024	7.188	65699503	833.9E6	36.078	36.156
20) A Methoxychlor	6.570	7.646	184.7E6	1951.2E6	200.024	184.325
-----						

(f)=RT Delta > 1/2 Window (#)=Amounts differ by > 25% (m)=manual int.

Data Path : Z:\pestpcbsrv\HPCHEM1\ECD\_D\Data\PD030719\  
 Data File : PD051644.D  
 Signal(s) : Signal #1: ECD1A.CH Signal #2: ECD2B.CH  
 Acq On : 07 Mar 2019 15:53  
 Operator : AJ\SJ  
 Sample : INDA321  
 Misc :  
 ALS Vial : 25 Sample Multiplier: 1

Integration File signal 1: autoint1.e  
 Integration File signal 2: autoint2.e  
 Quant Time: Mar 08 00:13:11 2019  
 Quant Method : Z:\pestpcbsrv\HPCHEM1\ECD\_D\Method\PD022219CLP.M  
 Quant Title : GC Extractables  
 QLast Update : Fri Feb 22 04:35:08 2019  
 Response via : Initial Calibration  
 Integrator: ChemStation 6890 Scale Mode: Large solvent peaks clipped

Volume Inj. : 1 µl  
 Signal #1 Phase : ZB-MR2 Signal #2 Phase: ZB-MR1  
 Signal #1 Info : 30M x 0.32mm x0.2 Signal #2 Info : 30M x 0.32mm x 0.50µm



Instrument :  
 ECD\_D  
 ClientSampleId :  
 INDA321