

Data Path : Z:\pestpcbsrv\HPCHEM1\ECD_D\Data\PD030719\
 Data File : PD051645.D
 Signal(s) : Signal #1: ECD1A.CH Signal #2: ECD2B.CH
 Acq On : 07 Mar 2019 16:07
 Operator : AJ\SJ
 Sample : INDB321
 Misc :
 ALS Vial : 26 Sample Multiplier: 1

Instrument :
 ECD_D
ClientSampled :
 INDB321

Manual Integrations
APPROVED
 Sohil
 3/8/2019 10:02:42 AM

Integration File signal 1: autoint1.e
 Integration File signal 2: autoint2.e
 Quant Time: Mar 08 00:13:27 2019
 Quant Method : Z:\pestpcbsrv\HPCHEM1\ECD_D\Method\PD022219CLP.M
 Quant Title : GC Extractables
 QLast Update : Fri Feb 22 04:35:08 2019
 Response via : Initial Calibration
 Integrator: ChemStation 6890 Scale Mode: Large solvent peaks clipped

Volume Inj. : 1 µl
 Signal #1 Phase : ZB-MR1 Signal #2 Phase: ZB-MR1
 Signal #1 Info : 30M x 0.32mm x0.2 Signal #2 Info : 30M x 0.32mm x 0.50µm

Compound	RT#1	RT#2	Resp#1	Resp#2	ng/ml	ng/ml

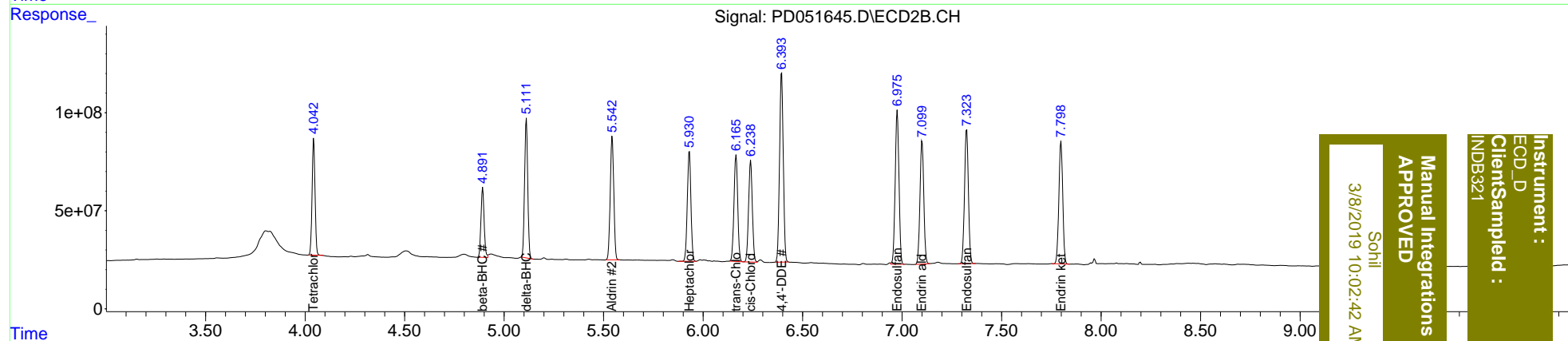
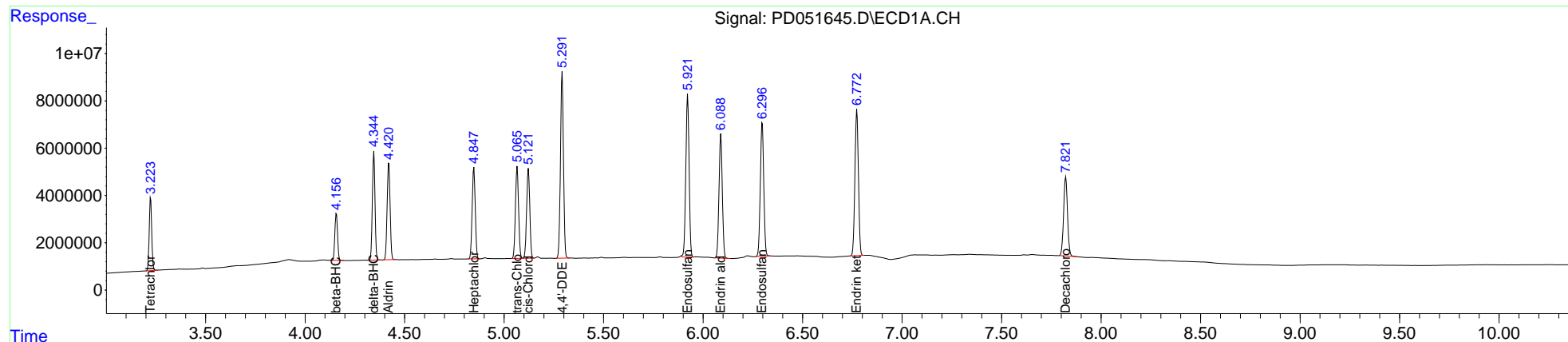
System Monitoring Compounds						
1) SA Tetrachlo...	3.224	4.044	27499991	615.5E6	19.137	19.921
27) SA Decachlor...	7.822	9.155	45406069	654.9E6	37.755	34.545
Target Compounds						
5) MB Aldrin	4.421	5.543	42023436	783.1E6	19.576	19.785
6) B beta-BHC	4.157	4.893	18821651	395.0E6	19.686	19.908
7) B delta-BHC	4.346	5.112	42366205	782.8E6	18.851	19.231
8) B Heptachlo...	4.848	5.931	41231947	711.4E6	19.559	19.870
10) B trans-Chl...	5.066	6.166	42256688	709.2E6	19.380	19.632
11) B cis-Chlor...	5.122	6.239	41433295	678.7E6	19.384	19.604
12) B 4,4'-DDE	5.292	6.395	83229415	1264.8E6	38.685	38.710
15) B Endosulfa...	5.921	6.975	77991401	1040.4E6	37.634m	37.903m
18) B Endrin al...	6.089	7.101	60926911	839.5E6	37.155	37.355
19) B Endosulfa...	6.297	7.325	68369030	926.5E6	37.022	36.495
21) B Endrin ke...	6.773	7.799	74793839	846.9E6	36.824	35.491

(f)=RT Delta > 1/2 Window (#)=Amounts differ by > 25% (m)=manual int.

Data Path : Z:\pestpcbsrv\HPCHEM1\ECD_D\Data\PD030719\
 Data File : PD051645.D
 Signal(s) : Signal #1: ECD1A.CH Signal #2: ECD2B.CH
 Acq On : 07 Mar 2019 16:07
 Operator : AJ\SJ
 Sample : INDB321
 Misc :
 ALS Vial : 26 Sample Multiplier: 1

Integration File signal 1: autoint1.e
 Integration File signal 2: autoint2.e
 Quant Time: Mar 08 00:13:27 2019
 Quant Method : Z:\pestpcbsrv\HPCHEM1\ECD_D\Method\PD022219CLP.M
 Quant Title : GC Extractables
 QLast Update : Fri Feb 22 04:35:08 2019
 Response via : Initial Calibration
 Integrator: ChemStation 6890 Scale Mode: Large solvent peaks clipped

Volume Inj. : 1 µl
 Signal #1 Phase : ZB-MR2 Signal #2 Phase: ZB-MR1
 Signal #1 Info : 30M x 0.32mm x0.2 Signal #2 Info : 30M x 0.32mm x 0.50µm



Instrument :
 ECD_D
 Client Sample Id :
 INDB321

Manual Integrations
 APPROVED
 3/8/2019 10:02:42 AM
 Sohli