

Data Path : Z:\pestpcbsrv\HPCHEM1\ECD\_D\Data\PD030722\  
 Data File : PD068352.D  
 Signal(s) : Signal #1: ECD1A.ch Signal #2: ECD2B.ch  
 Acq On : 07 Mar 2022 11:06  
 Operator : AR\AJ  
 Sample : PCHLORCCC500  
 Misc :  
 ALS Vial : 5 Sample Multiplier: 1

**Instrument :**  
 ECD\_D  
**ClientSampleId :**  
 PCHLORCCC500

**Manual Integrations**  
**APPROVED**  
 Reviewed By :Abdul Mirza 03/09/2022  
 Supervised By :Ankita Jodhani 03/09/2022

Integration File signal 1: autoint1.e  
 Integration File signal 2: autoint2.e  
 Quant Time: Mar 08 00:44:06 2022  
 Quant Method : Z:\pestpcbsrv\HPCHEM1\ECD\_D\Method\PD030122.M  
 Quant Title : GC Extractables  
 QLast Update : Tue Mar 01 06:48:49 2022  
 Response via : Initial Calibration  
 Integrator: ChemStation

Volume Inj. : 2 µl  
 Signal #1 Phase : ZB-MR2 Signal #2 Phase: ZB-MR1  
 Signal #1 Info : 30M x 0.32mm x0.2 Signal #2 Info : 30M x 0.32mm x 0.50µm

Compound	RT#1	RT#2	Resp#1	Resp#2	ng/ml	ng/ml
-----						
System Monitoring Compounds						
1) SA Tetrachlo...	3.455	4.177	66535477	449.3E6	56.759	46.812
28) SA Decachlor...	8.220	9.378	60062589	286.6E6	51.613	48.335
Target Compounds						
23) Chlordane-1	4.327	5.200	21500726	193.7E6	492.862	478.255
24) Chlordane-2	4.829	5.674	25452818	188.4E6	493.017	468.589
25) Chlordane-3	5.398	6.329	69862896	681.1E6	488.324	478.940
26) Chlordane-4	5.456	6.407	59330187	794.7E6	485.639	493.084
27) Chlordane-5	6.295	7.218	25079006	146.9E6	509.151	512.014m
-----						

(f)=RT Delta > 1/2 Window (#)=Amounts differ by > 25% (m)=manual int.

Data Path : Z:\pestpcbsrv\HPCHEM1\ECD\_D\Data\PD030722\  
 Data File : PD068352.D  
 Signal(s) : Signal #1: ECD1A.ch Signal #2: ECD2B.ch  
 Acq On : 07 Mar 2022 11:06  
 Operator : AR\AJ  
 Sample : PCHLORCCC500  
 Misc :  
 ALS Vial : 5 Sample Multiplier: 1

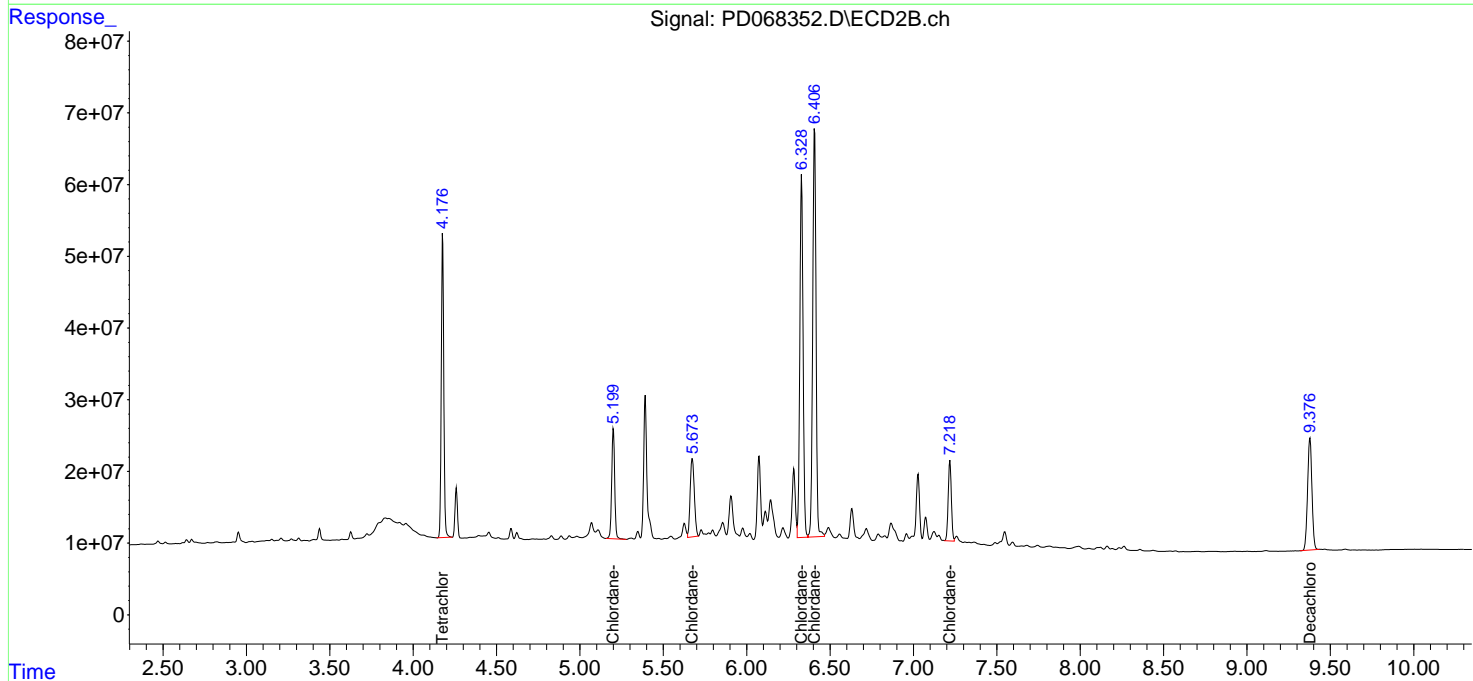
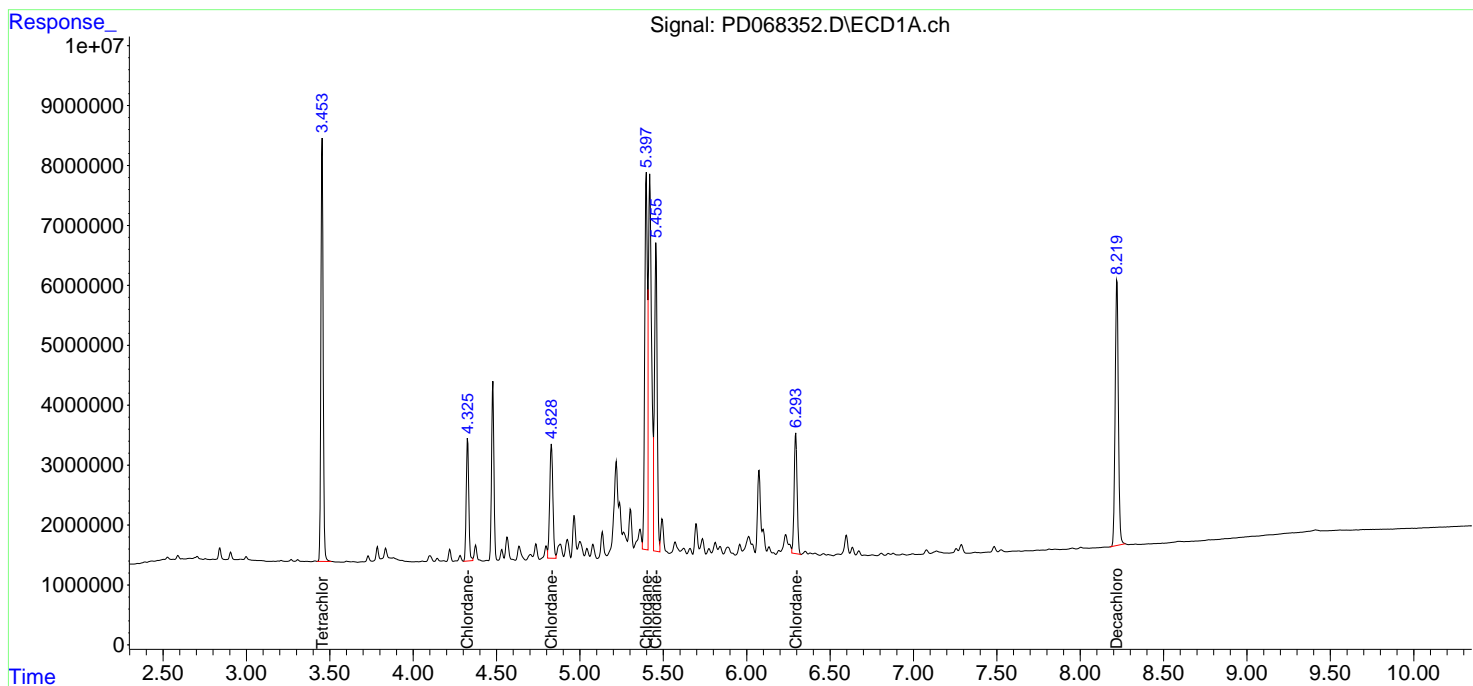
Instrument :  
 ECD\_D  
 ClientSampleId :  
 PCHLORCCC500

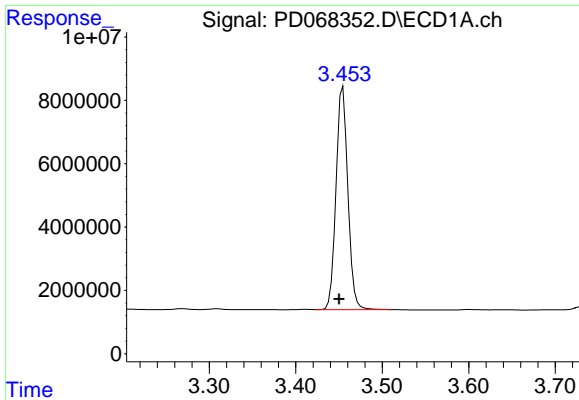
Manual Integrations  
 APPROVED

Reviewed By :Abdul Mirza 03/09/2022  
 Supervised By :Ankita Jodhani 03/09/2022

Integration File signal 1: autoint1.e  
 Integration File signal 2: autoint2.e  
 Quant Time: Mar 08 00:44:06 2022  
 Quant Method : Z:\pestpcbsrv\HPCHEM1\ECD\_D\Method\PD030122.M  
 Quant Title : GC Extractables  
 QLast Update : Tue Mar 01 06:48:49 2022  
 Response via : Initial Calibration  
 Integrator: ChemStation

Volume Inj. : 2 µl  
 Signal #1 Phase : ZB-MR2 Signal #2 Phase: ZB-MR1  
 Signal #1 Info : 30M x 0.32mm x0.2 Signal #2 Info : 30M x 0.32mm x 0.50µm

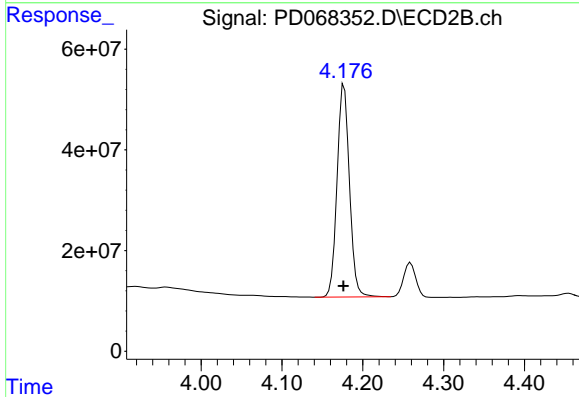




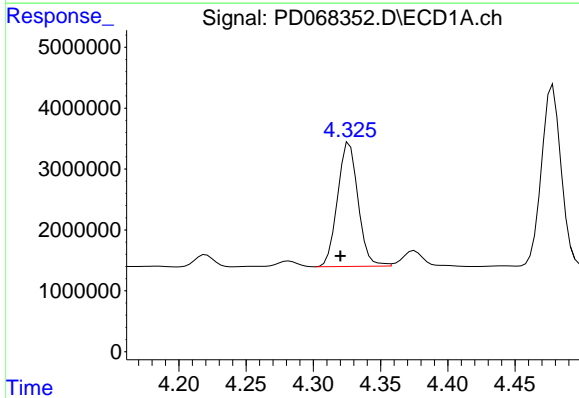
#1 Tetrachloro-m-xylene  
 R.T.: 3.455 min  
 Delta R.T.: 0.005 min  
 Response: 66535477  
 Conc: 56.76 ng/ml

Instrument : ECD\_D  
 Client Sample Id : PCHLORCCC500

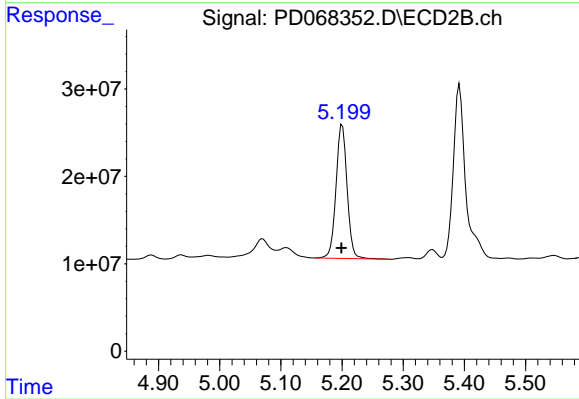
**Manual Integrations**  
**APPROVED**  
 Reviewed By :Abdul Mirza 03/09/2022  
 Supervised By :Ankita Jodhani 03/09/2022



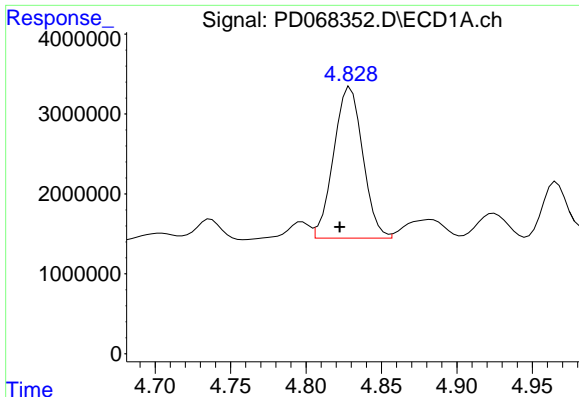
#1 Tetrachloro-m-xylene  
 R.T.: 4.177 min  
 Delta R.T.: 0.000 min  
 Response: 449303383  
 Conc: 46.81 ng/ml



#23 Chlordane-1  
 R.T.: 4.327 min  
 Delta R.T.: 0.007 min  
 Response: 21500726  
 Conc: 492.86 ng/ml



#23 Chlordane-1  
 R.T.: 5.200 min  
 Delta R.T.: 0.002 min  
 Response: 193690170  
 Conc: 478.26 ng/ml



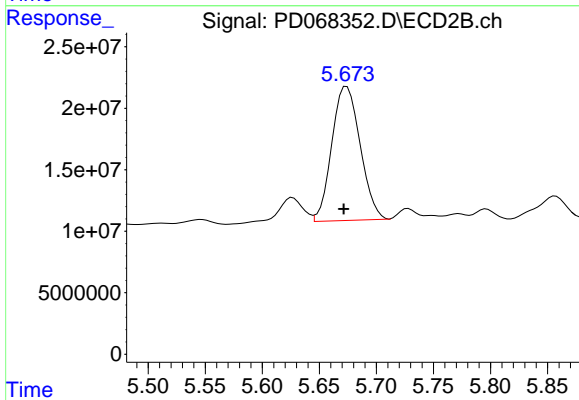
#24 Chlordane-2

R.T.: 4.829 min  
 Delta R.T.: 0.007 min  
 Response: 25452818  
 Conc: 493.02 ng/ml

Instrument :  
 ECD\_D  
 ClientSampleId :  
 PCHLORCCC500

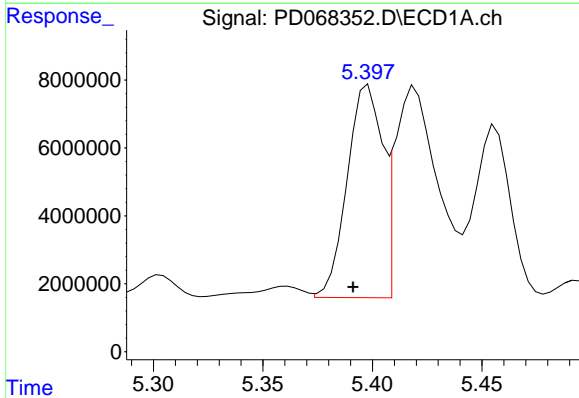
Manual Integrations  
 APPROVED

Reviewed By :Abdul Mirza 03/09/2022  
 Supervised By :Ankita Jodhani 03/09/2022



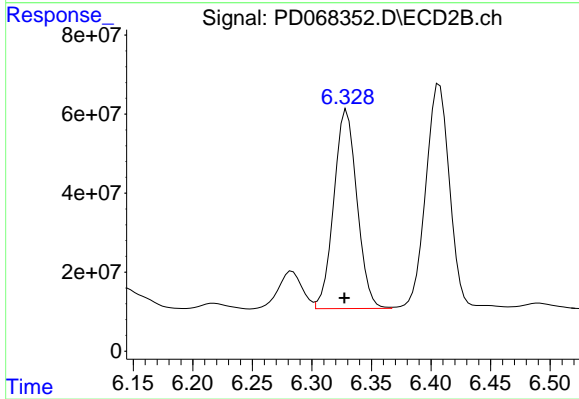
#24 Chlordane-2

R.T.: 5.674 min  
 Delta R.T.: 0.003 min  
 Response: 188379985  
 Conc: 468.59 ng/ml



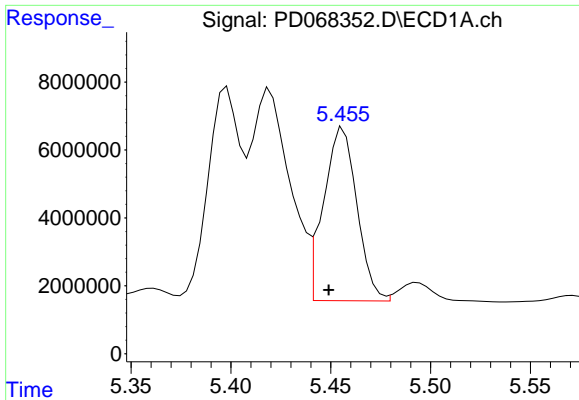
#25 Chlordane-3

R.T.: 5.398 min  
 Delta R.T.: 0.007 min  
 Response: 69862896  
 Conc: 488.32 ng/ml



#25 Chlordane-3

R.T.: 6.329 min  
 Delta R.T.: 0.002 min  
 Response: 681094820  
 Conc: 478.94 ng/ml



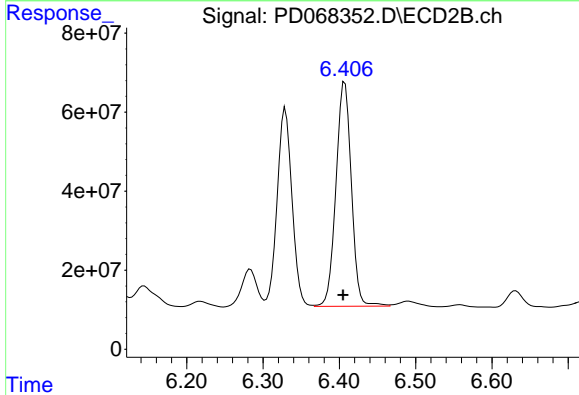
#26 Chlordane-4

R.T.: 5.456 min  
 Delta R.T.: 0.007 min  
 Response: 59330187  
 Conc: 485.64 ng/ml

Instrument :  
 ECD\_D  
 ClientSampleId :  
 PCHLORCCC500

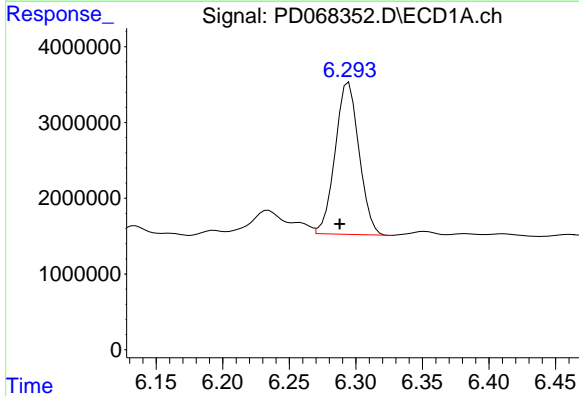
Manual Integrations  
 APPROVED

Reviewed By :Abdul Mirza 03/09/2022  
 Supervised By :Ankita Jodhani 03/09/2022



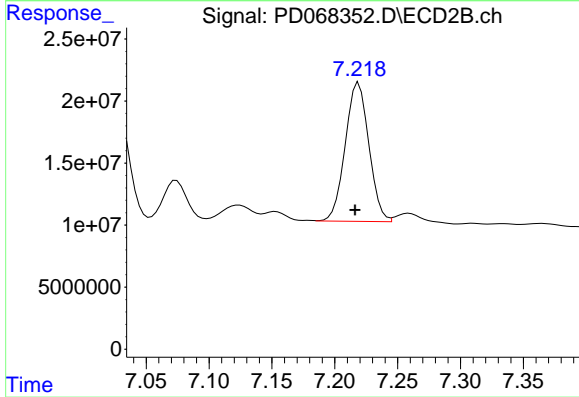
#26 Chlordane-4

R.T.: 6.407 min  
 Delta R.T.: 0.002 min  
 Response: 794739593  
 Conc: 493.08 ng/ml



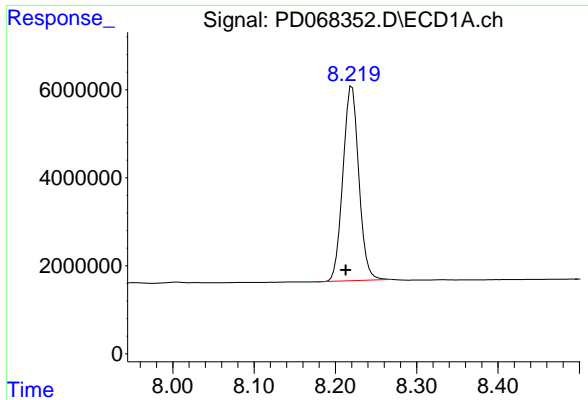
#27 Chlordane-5

R.T.: 6.295 min  
 Delta R.T.: 0.007 min  
 Response: 25079006  
 Conc: 509.15 ng/ml



#27 Chlordane-5

R.T.: 7.218 min  
 Delta R.T.: 0.002 min  
 Response: 146862805  
 Conc: 512.01 ng/ml m



#28 Decachlorobiphenyl

R.T.: 8.220 min  
Delta R.T.: 0.008 min  
Response: 60062589  
Conc: 51.61 ng/ml

Instrument :

ECD\_D

ClientSampleId :

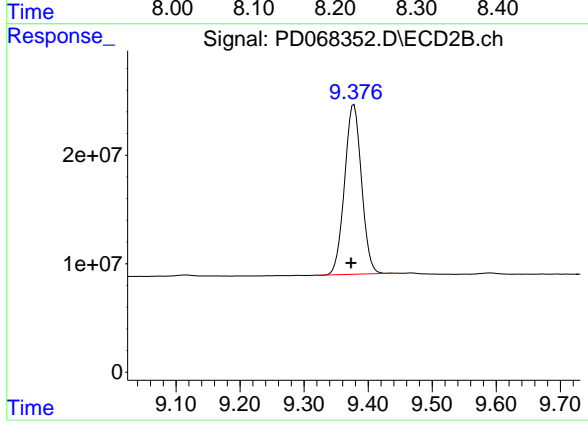
PCHLORCCC500

Manual Integrations

APPROVED

Reviewed By :Abdul Mirza 03/09/2022

Supervised By :Ankita Jodhani 03/09/2022



#28 Decachlorobiphenyl

R.T.: 9.378 min  
Delta R.T.: 0.004 min  
Response: 286570181  
Conc: 48.34 ng/ml