

Data Path : Z:\pestpcbsrv\HPCHEM1\ECD_D\Data\PD030722\
 Data File : PD068357.D
 Signal(s) : Signal #1: ECD1A.ch Signal #2: ECD2B.ch
 Acq On : 07 Mar 2022 12:23
 Operator : AR\AJ
 Sample : N1742-01RE
 Misc :
 ALS Vial : 10 Sample Multiplier: 1

Instrument :
 ECD_D
ClientSampleId :
 BI-WEEKLY-INFLUENTRE

Manual Integrations
APPROVED

Reviewed By :Abdul Mirza 03/09/2022
 Supervised By :Ankita Jodhani 03/09/2022

Integration File signal 1: autoint1.e
 Integration File signal 2: autoint2.e
 Quant Time: Mar 08 00:45:50 2022
 Quant Method : Z:\pestpcbsrv\HPCHEM1\ECD_D\Method\PD030122.M
 Quant Title : GC Extractables
 QLast Update : Tue Mar 01 06:48:49 2022
 Response via : Initial Calibration
 Integrator: ChemStation

Volume Inj. : 2 µl
 Signal #1 Phase : ZB-MR2 Signal #2 Phase: ZB-MR1
 Signal #1 Info : 30M x 0.32mm x0.2 Signal #2 Info : 30M x 0.32mm x 0.50µm

Compound	RT#1	RT#2	Resp#1	Resp#2	ng/ml	ng/ml

System Monitoring Compounds						
1) SA Tetrachlo...	3.452	4.174	9476606	100.1E6	8.084	10.427 #
28) SA Decachlor...	8.209	9.374	2421930	52361445	2.081m	8.832m#

Target Compounds

(f)=RT Delta > 1/2 Window (#)=Amounts differ by > 25% (m)=manual int.

Data Path : Z:\pestpcbsrv\HPCHEM1\ECD_D\Data\PD030722\
 Data File : PD068357.D
 Signal(s) : Signal #1: ECD1A.ch Signal #2: ECD2B.ch
 Acq On : 07 Mar 2022 12:23
 Operator : AR\AJ
 Sample : N1742-01RE
 Misc :
 ALS Vial : 10 Sample Multiplier: 1

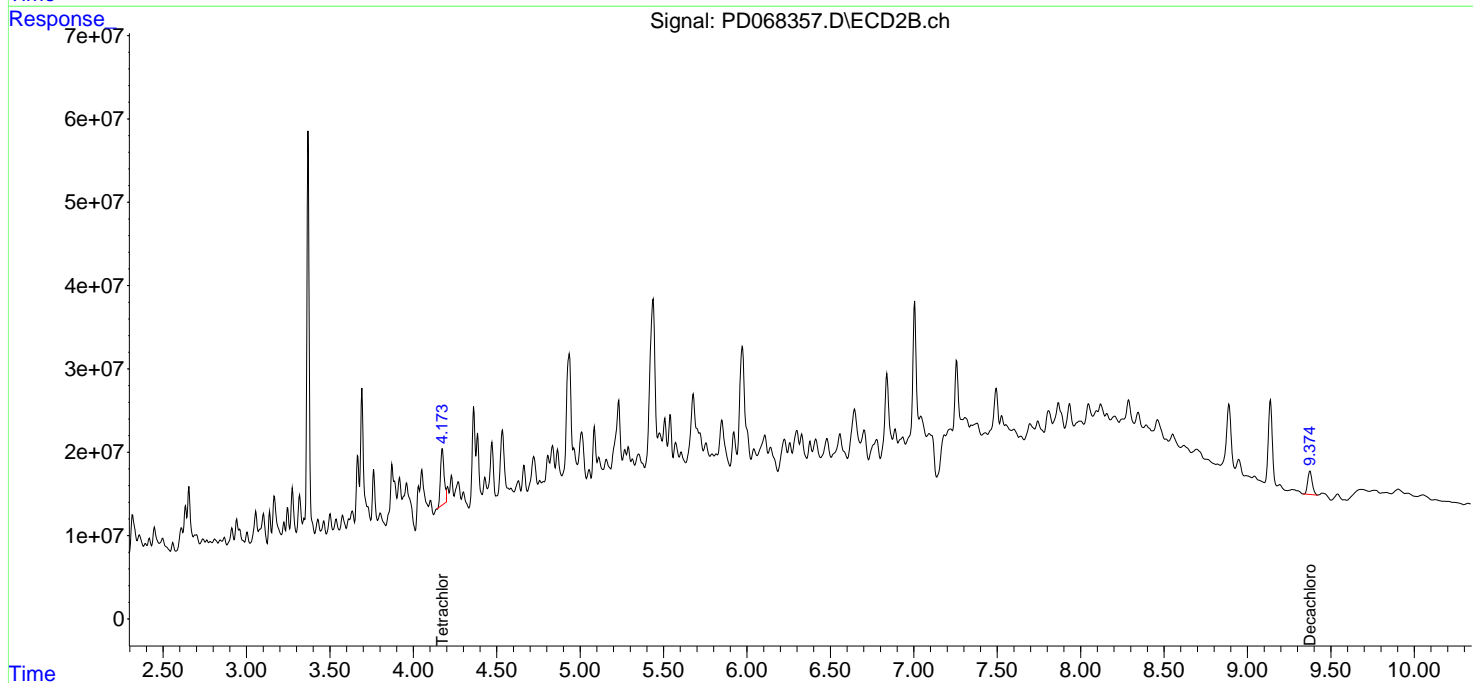
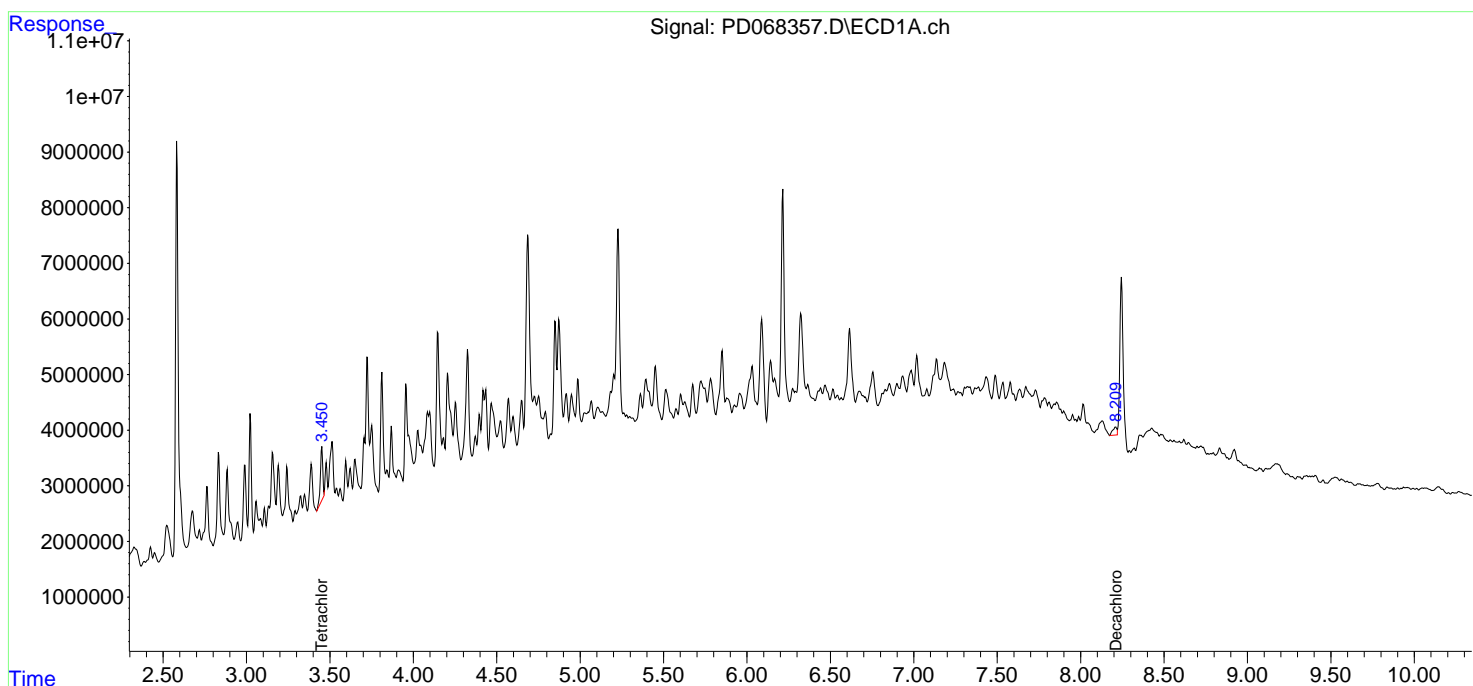
Instrument :
 ECD_D
 ClientSampleId :
 BI-WEEKLY-INFLUENTRE

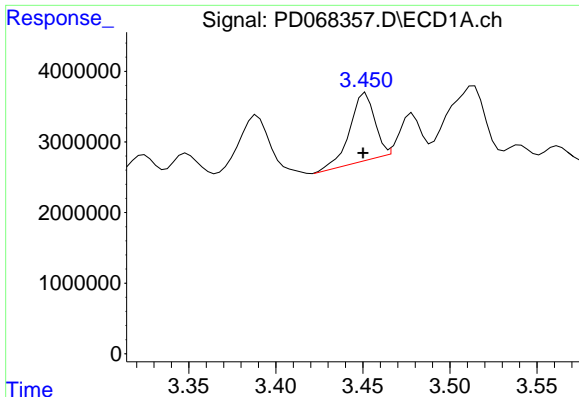
Manual Integrations
 APPROVED

Reviewed By :Abdul Mirza 03/09/2022
 Supervised By :Ankita Jodhani 03/09/2022

Integration File signal 1: autoint1.e
 Integration File signal 2: autoint2.e
 Quant Time: Mar 08 00:45:50 2022
 Quant Method : Z:\pestpcbsrv\HPCHEM1\ECD_D\Method\PD030122.M
 Quant Title : GC Extractables
 QLast Update : Tue Mar 01 06:48:49 2022
 Response via : Initial Calibration
 Integrator: ChemStation

Volume Inj. : 2 µl
 Signal #1 Phase : ZB-MR2 Signal #2 Phase: ZB-MR1
 Signal #1 Info : 30M x 0.32mm x0.2 Signal #2 Info : 30M x 0.32mm x 0.50µm





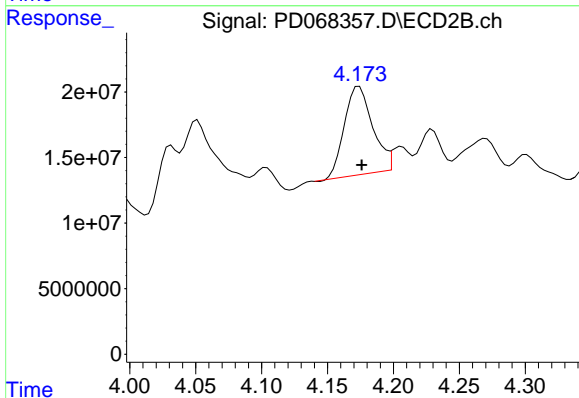
#1 Tetrachloro-m-xylene

R.T.: 3.452 min
 Delta R.T.: 0.002 min
 Response: 9476606
 Conc: 8.08 ng/ml

Instrument :
 ECD_D
 ClientSampleId :
 BI-WEEKLY-INFLUENTRE

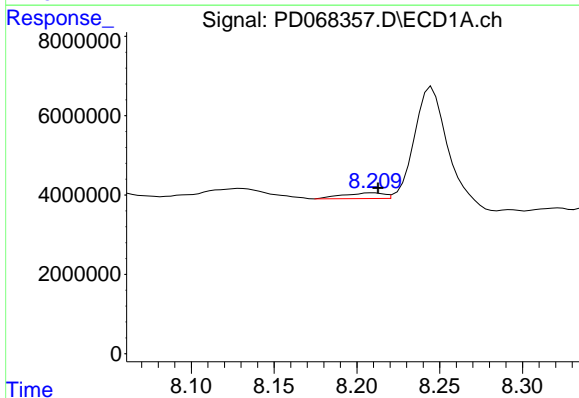
Manual Integrations
 APPROVED

Reviewed By :Abdul Mirza 03/09/2022
 Supervised By :Ankita Jodhani 03/09/2022



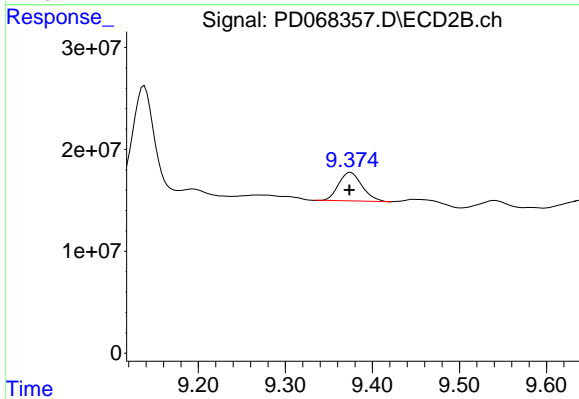
#1 Tetrachloro-m-xylene

R.T.: 4.174 min
 Delta R.T.: -0.002 min
 Response: 100078589
 Conc: 10.43 ng/ml



#28 Decachlorobiphenyl

R.T.: 8.209 min
 Delta R.T.: -0.003 min
 Response: 2421930
 Conc: 2.08 ng/ml m



#28 Decachlorobiphenyl

R.T.: 9.374 min
 Delta R.T.: 0.000 min
 Response: 52361445
 Conc: 8.83 ng/ml m