

Data Path : Z:\pestpcbsrv\HPCHEM1\ECD_D\Data\PD030722\
 Data File : PD068366.D
 Signal(s) : Signal #1: ECD1A.ch Signal #2: ECD2B.ch
 Acq On : 07 Mar 2022 16:55
 Operator : AR\AJ
 Sample : N1806-01
 Misc :
 ALS Vial : 15 Sample Multiplier: 1

Instrument :
 ECD_D
ClientSampleId :
 DUM-22

Manual Integrations
APPROVED
 Reviewed By :Abdul Mirza 03/09/2022
 Supervised By :Ankita Jodhani 03/09/2022

Integration File signal 1: autoint1.e
 Integration File signal 2: autoint2.e
 Quant Time: Mar 08 00:59:55 2022
 Quant Method : Z:\pestpcbsrv\HPCHEM1\ECD_D\Method\PD030122.M
 Quant Title : GC Extractables
 QLast Update : Tue Mar 01 06:48:49 2022
 Response via : Initial Calibration
 Integrator: ChemStation

Volume Inj. : 2 µl
 Signal #1 Phase : ZB-MR2 Signal #2 Phase: ZB-MR1
 Signal #1 Info : 30M x 0.32mm x0.2 Signal #2 Info : 30M x 0.32mm x 0.50µm

Compound	RT#1	RT#2	Resp#1	Resp#2	ng/ml	ng/ml

System Monitoring Compounds						
1) SA Tetrachlo...	3.451	4.177	10509522	86674446	8.965	9.030
28) SA Decachlor...	8.216	9.378	14049199	67423487	12.073	11.372
Target Compounds						
11) B alpha-Chl...	5.450	6.408	692898	53954872	0.472m	5.235m#
12) B 4,4'-DDE	5.618	6.556	7670578	55212708	5.624	5.648
17) MA 4,4'-DDT	6.375	7.350	2828747	17866357	2.565	2.525

(f)=RT Delta > 1/2 Window (#)=Amounts differ by > 25% (m)=manual int.

Data Path : Z:\pestpcbsrv\HPCHEM1\ECD_D\Data\PD030722\
 Data File : PD068366.D
 Signal(s) : Signal #1: ECD1A.ch Signal #2: ECD2B.ch
 Acq On : 07 Mar 2022 16:55
 Operator : AR\AJ
 Sample : N1806-01
 Misc :
 ALS Vial : 15 Sample Multiplier: 1

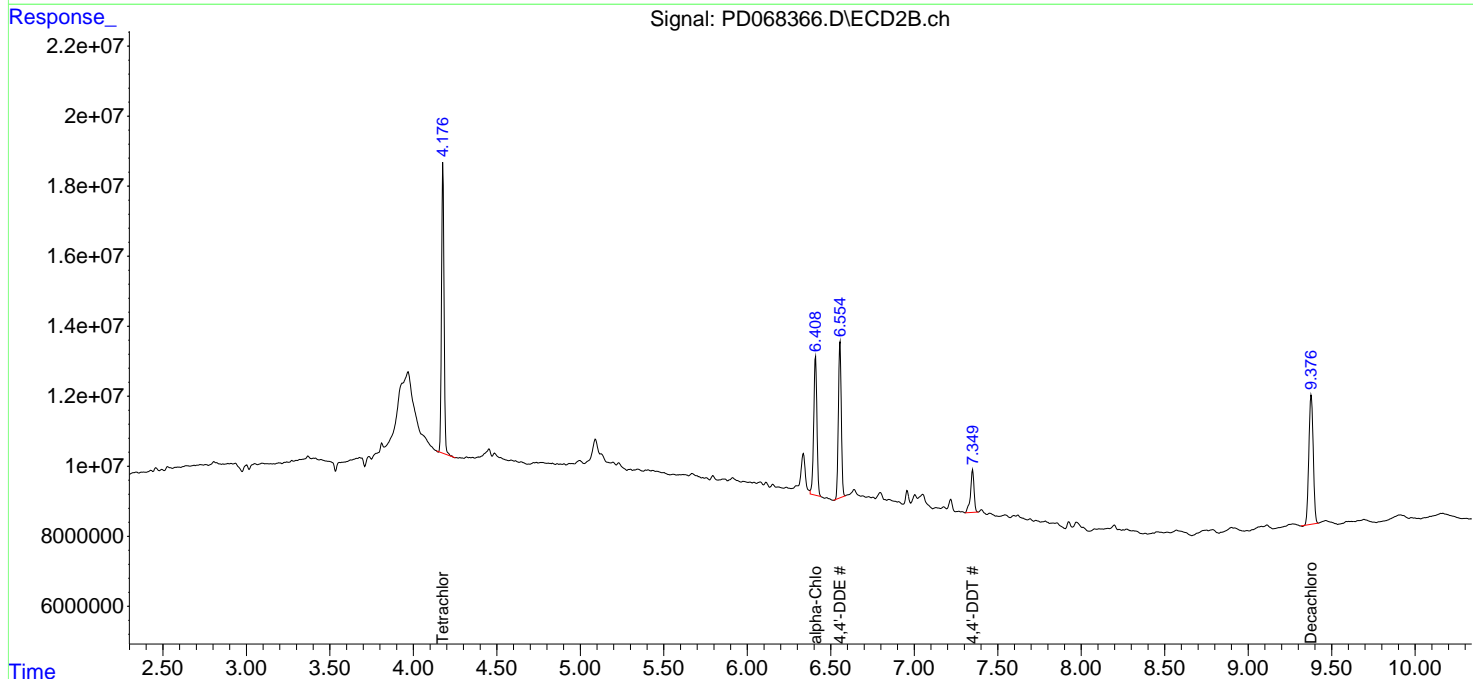
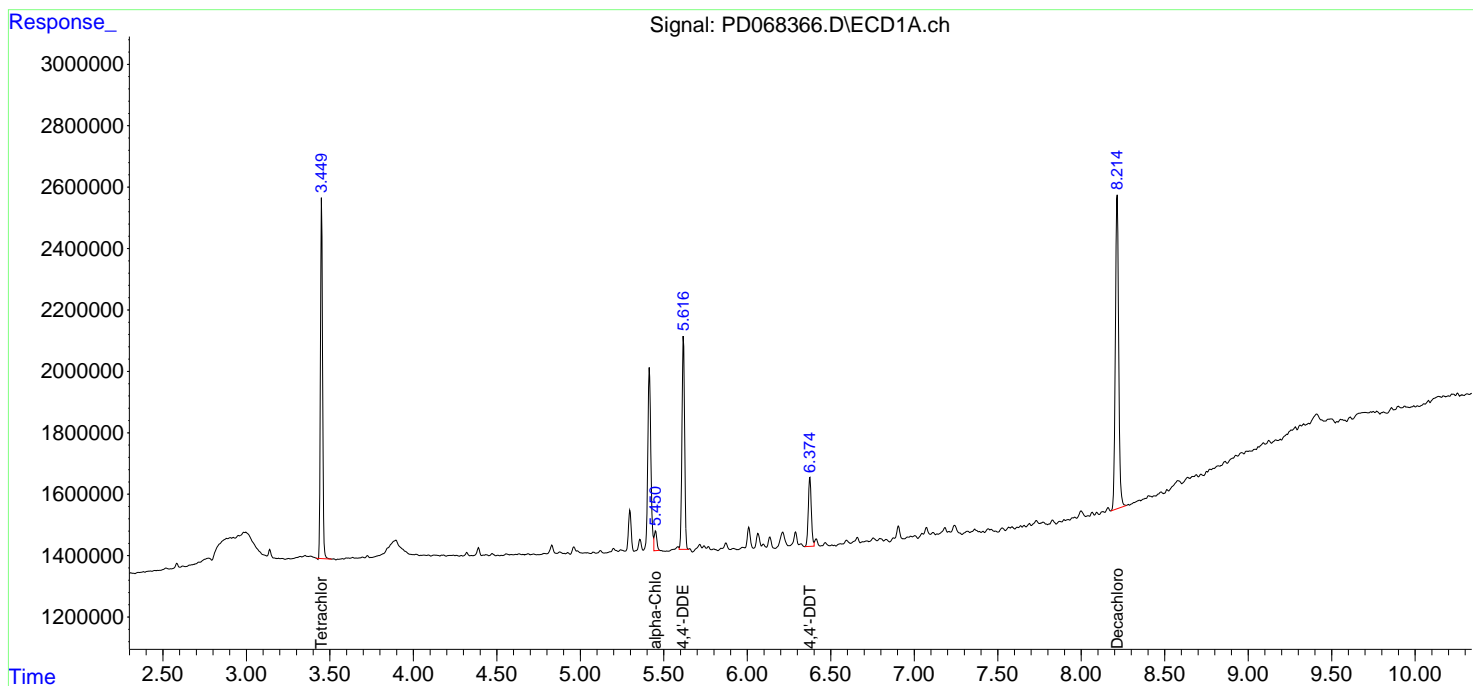
Instrument :
 ECD_D
 ClientSampleId :
 DUM-22

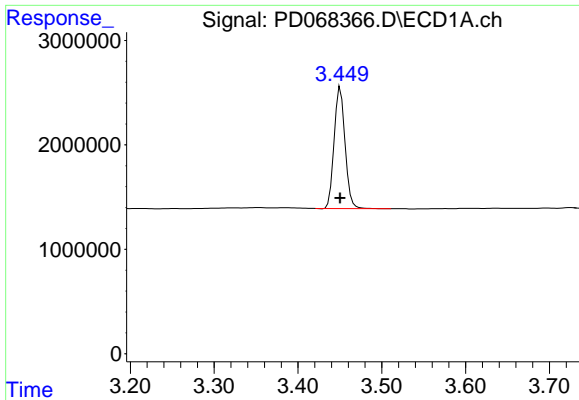
Manual Integrations
 APPROVED

Reviewed By :Abdul Mirza 03/09/2022
 Supervised By :Ankita Jodhani 03/09/2022

Integration File signal 1: autoint1.e
 Integration File signal 2: autoint2.e
 Quant Time: Mar 08 00:59:55 2022
 Quant Method : Z:\pestpcbsrv\HPCHEM1\ECD_D\Method\PD030122.M
 Quant Title : GC Extractables
 QLast Update : Tue Mar 01 06:48:49 2022
 Response via : Initial Calibration
 Integrator: ChemStation

Volume Inj. : 2 µl
 Signal #1 Phase : ZB-MR2 Signal #2 Phase: ZB-MR1
 Signal #1 Info : 30M x 0.32mm x0.2 Signal #2 Info : 30M x 0.32mm x 0.50µm





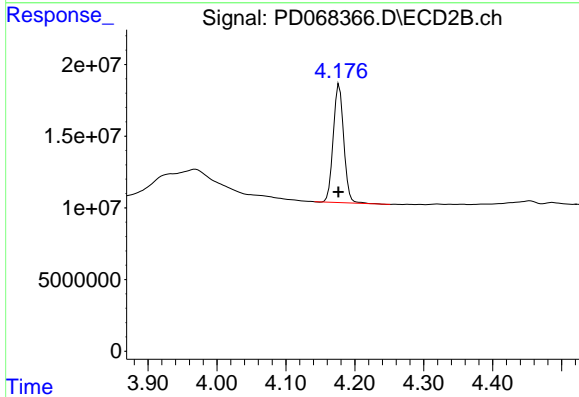
#1 Tetrachloro-m-xylene

R.T.: 3.451 min
 Delta R.T.: 0.000 min
 Response: 10509522
 Conc: 8.97 ng/ml

Instrument : ECD_D
 ClientSampleId : DUM-22

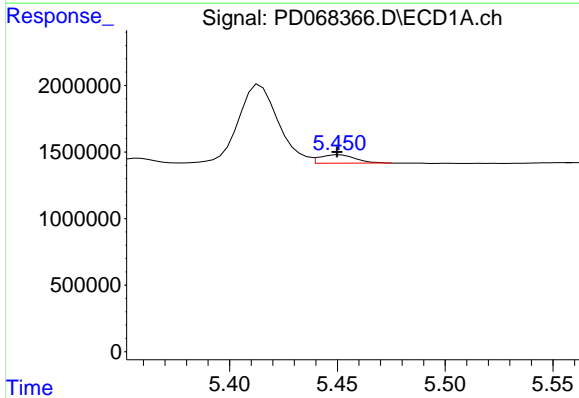
Manual Integrations
 APPROVED

Reviewed By :Abdul Mirza 03/09/2022
 Supervised By :Ankita Jodhani 03/09/2022



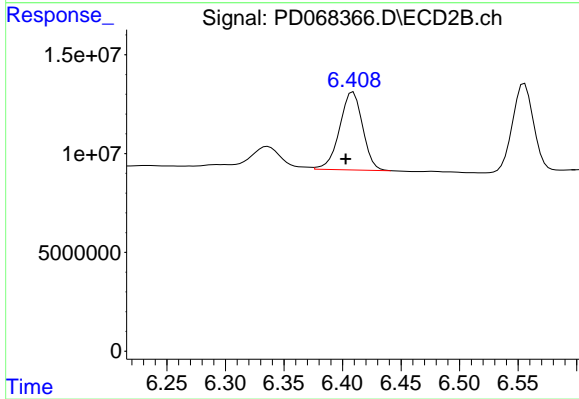
#1 Tetrachloro-m-xylene

R.T.: 4.177 min
 Delta R.T.: 0.001 min
 Response: 86674446
 Conc: 9.03 ng/ml



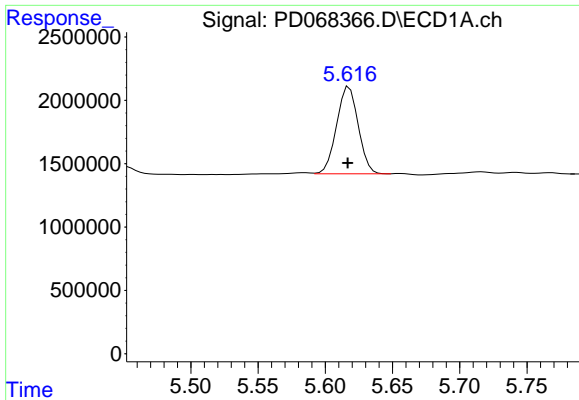
#11 alpha-Chlordane

R.T.: 5.450 min
 Delta R.T.: 0.000 min
 Response: 692898
 Conc: 0.47 ng/ml m



#11 alpha-Chlordane

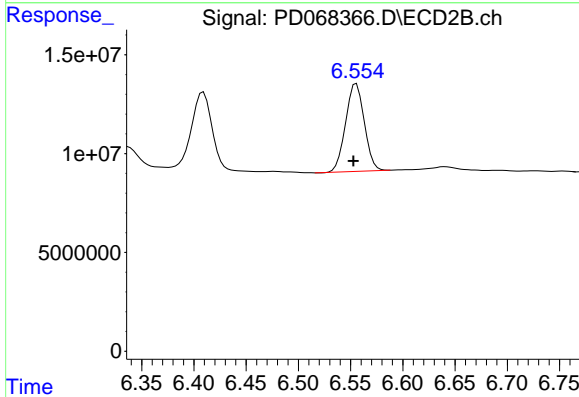
R.T.: 6.408 min
 Delta R.T.: 0.005 min
 Response: 53954872
 Conc: 5.23 ng/ml m



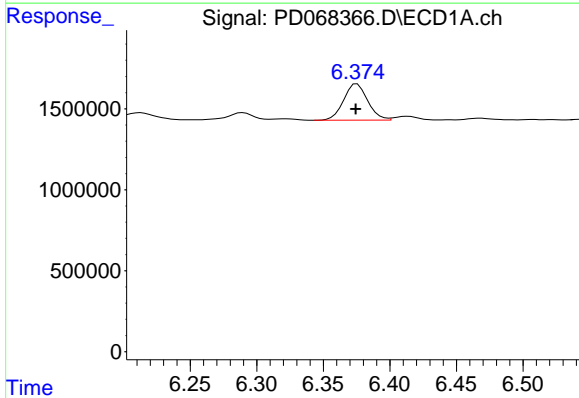
#12 4,4'-DDE
 R.T.: 5.618 min
 Delta R.T.: 0.001 min
 Response: 7670578
 Conc: 5.62 ng/ml

Instrument : ECD_D
 Client Sample Id : DUM-22

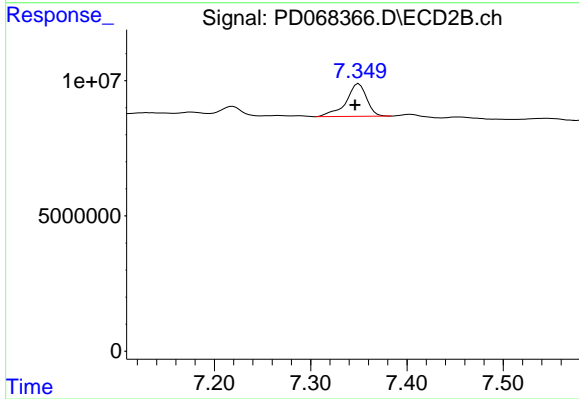
Manual Integrations
APPROVED
 Reviewed By :Abdul Mirza 03/09/2022
 Supervised By :Ankita Jodhani 03/09/2022



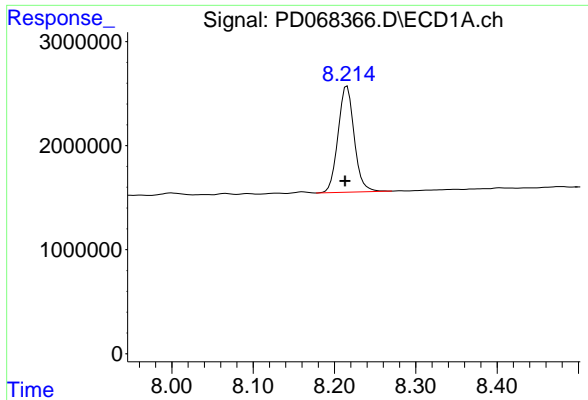
#12 4,4'-DDE
 R.T.: 6.556 min
 Delta R.T.: 0.003 min
 Response: 55212708
 Conc: 5.65 ng/ml



#17 4,4'-DDT
 R.T.: 6.375 min
 Delta R.T.: 0.001 min
 Response: 2828747
 Conc: 2.57 ng/ml



#17 4,4'-DDT
 R.T.: 7.350 min
 Delta R.T.: 0.004 min
 Response: 17866357
 Conc: 2.53 ng/ml

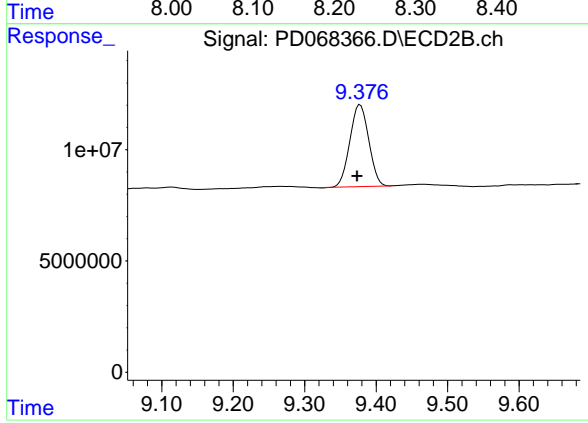


#28 Decachlorobiphenyl
R.T.: 8.216 min
Delta R.T.: 0.003 min
Response: 14049199
Conc: 12.07 ng/ml

Instrument :
ECD_D
ClientSampleId :
DUM-22

Manual Integrations
APPROVED

Reviewed By :Abdul Mirza 03/09/2022
Supervised By :Ankita Jodhani 03/09/2022



#28 Decachlorobiphenyl
R.T.: 9.378 min
Delta R.T.: 0.004 min
Response: 67423487
Conc: 11.37 ng/ml