

Data Path : Z:\pestpcbsrv\HPCHEM1\ECD_D\Data\PD030921\
 Data File : PD061487.D
 Signal(s) : Signal #1: ECD1A.ch Signal #2: ECD2B.ch
 Acq On : 09 Mar 2021 11:15
 Operator : AR\AJ
 Sample : M1344-02
 Misc : TOX MDL 100 PPB
 ALS Vial : 7 Sample Multiplier: 1

Instrument :
 ECD_D
 ClientSampleId :
 MDL-WATER-QT2-2021-04

Manual Integrations
 APPROVED

Ankita
 3/10/2021 2:02:00 PM

Integration File signal 1: autoint1.e
 Integration File signal 2: autoint2.e
 Quant Time: Mar 10 00:28:30 2021
 Quant Method : Z:\pestpcbsrv\HPCHEM1\ECD_D\Method\PD030421CLP.M
 Quant Title : GC Extractables
 QLast Update : Fri Mar 05 05:53:14 2021
 Response via : Initial Calibration
 Integrator: ChemStation

Volume Inj. : 1 µl
 Signal #1 Phase : ZB-MR2 Signal #2 Phase: ZB-MR1
 Signal #1 Info : 30M x 0.32mm x0.2 Signal #2 Info : 30M x 0.32mm x 0.50µm

Compound	RT#1	RT#2	Resp#1	Resp#2	ng/ml	ng/ml

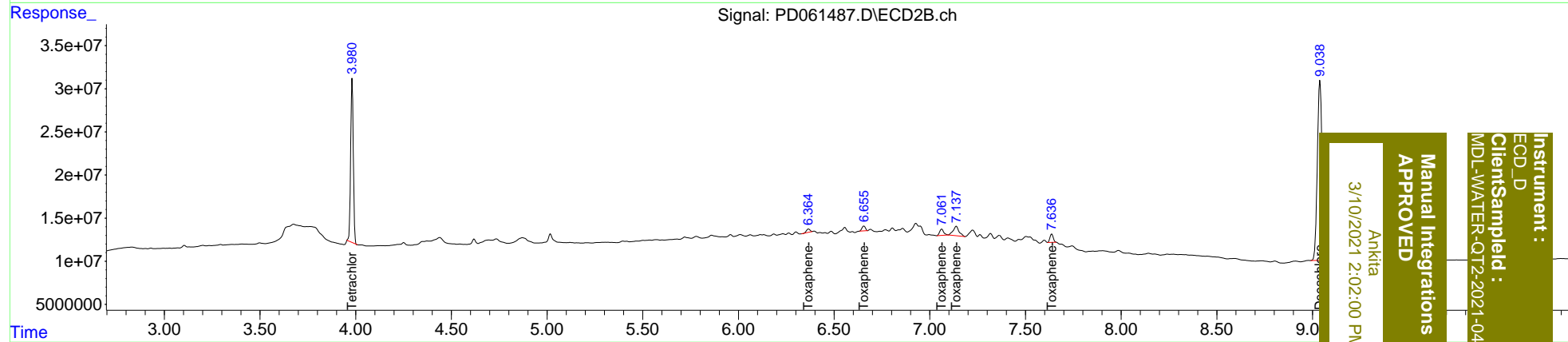
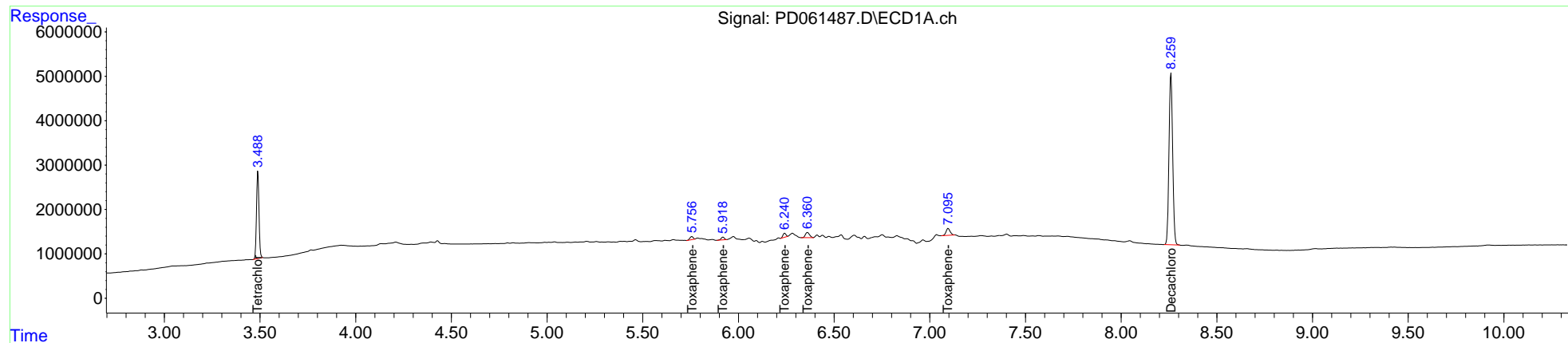
System Monitoring Compounds						
1) SA Tetrachlo...	3.489	3.982	17788090	182.5E6	19.580	19.543
27) SA Decachlor...	8.261	9.039	51846958	364.9E6	38.711	39.011
Target Compounds						
22) Toxaphene-1	5.756	6.366	821960	4888609	90.899m	83.290
23) Toxaphene-2	5.920	6.656	739959	7048508	79.350	96.831
24) Toxaphene-3	6.242	7.063	976475	10675106	90.191	103.907
25) Toxaphene-4	6.361	7.139	1762957	23238935	75.500	82.365
26) Toxaphene-5	7.095	7.638	2316029	11605151	87.702m	95.351

(f)=RT Delta > 1/2 Window (#)=Amounts differ by > 25% (m)=manual int.

Data Path : Z:\pestpcbsrv\HPCHEM1\ECD_D\Data\PD030921\
 Data File : PD061487.D
 Signal(s) : Signal #1: ECD1A.ch Signal #2: ECD2B.ch
 Acq On : 09 Mar 2021 11:15
 Operator : AR\AJ
 Sample : M1344-02
 Misc : TOX MDL 100 PPB
 ALS Vial : 7 Sample Multiplier: 1

Integration File signal 1: autoint1.e
 Integration File signal 2: autoint2.e
 Quant Time: Mar 10 00:28:30 2021
 Quant Method : Z:\pestpcbsrv\HPCHEM1\ECD_D\Method\PD030421CLP.M
 Quant Title : GC Extractables
 QLast Update : Fri Mar 05 05:53:14 2021
 Response via : Initial Calibration
 Integrator: ChemStation

Volume Inj. : 1 µl
 Signal #1 Phase : ZB-MR2 Signal #2 Phase: ZB-MR1
 Signal #1 Info : 30M x 0.32mm x0.2 Signal #2 Info : 30M x 0.32mm x 0.50µm



Instrument : ECD_D
 Client Sample Id : MDL-WATER-QT2-2021-04
 Manual Integrations APPROVED
 Ankitia
 3/10/2021 2:02:00 PM