

Data Path : Z:\pestpcbsrv\HPCHEM1\ECD\_D\Data\PD030922\  
 Data File : PD068441.D  
 Signal(s) : Signal #1: ECD1A.ch Signal #2: ECD2B.ch  
 Acq On : 09 Mar 2022 22:55  
 Operator : AR\AJ  
 Sample : N1830-05  
 Misc :  
 ALS Vial : 23 Sample Multiplier: 1

Instrument :  
 ECD\_D  
 ClientSampleId :  
 11977

Integration File signal 1: autoint1.e  
 Integration File signal 2: autoint2.e  
 Quant Time: Mar 10 02:09:01 2022  
 Quant Method : Z:\pestpcbsrv\HPCHEM1\ECD\_D\Method\PD030122.M  
 Quant Title : GC Extractables  
 QLast Update : Tue Mar 01 06:48:49 2022  
 Response via : Initial Calibration  
 Integrator: ChemStation

Volume Inj. : 2 µl  
 Signal #1 Phase : ZB-MR2 Signal #2 Phase: ZB-MR1  
 Signal #1 Info : 30M x 0.32mm x0.2 Signal #2 Info : 30M x 0.32mm x 0.50µm

Compound	RT#1	RT#2	Resp#1	Resp#2	ng/ml	ng/ml
-----						
System Monitoring Compounds						
1) SA Tetrachlo...	3.450	4.176	25086225	199.4E6	21.400	20.772
28) SA Decachlor...	8.212	9.373	26335363	126.5E6	22.631	21.333

Target Compounds

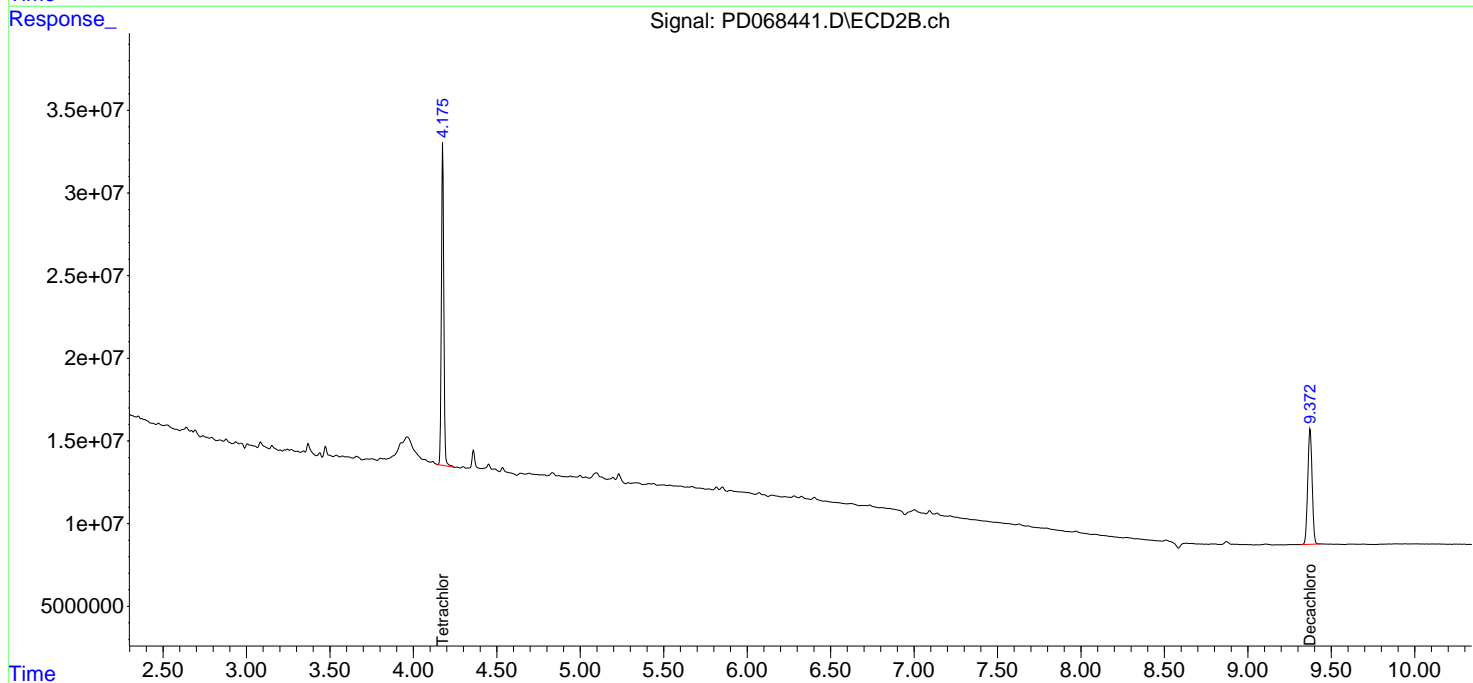
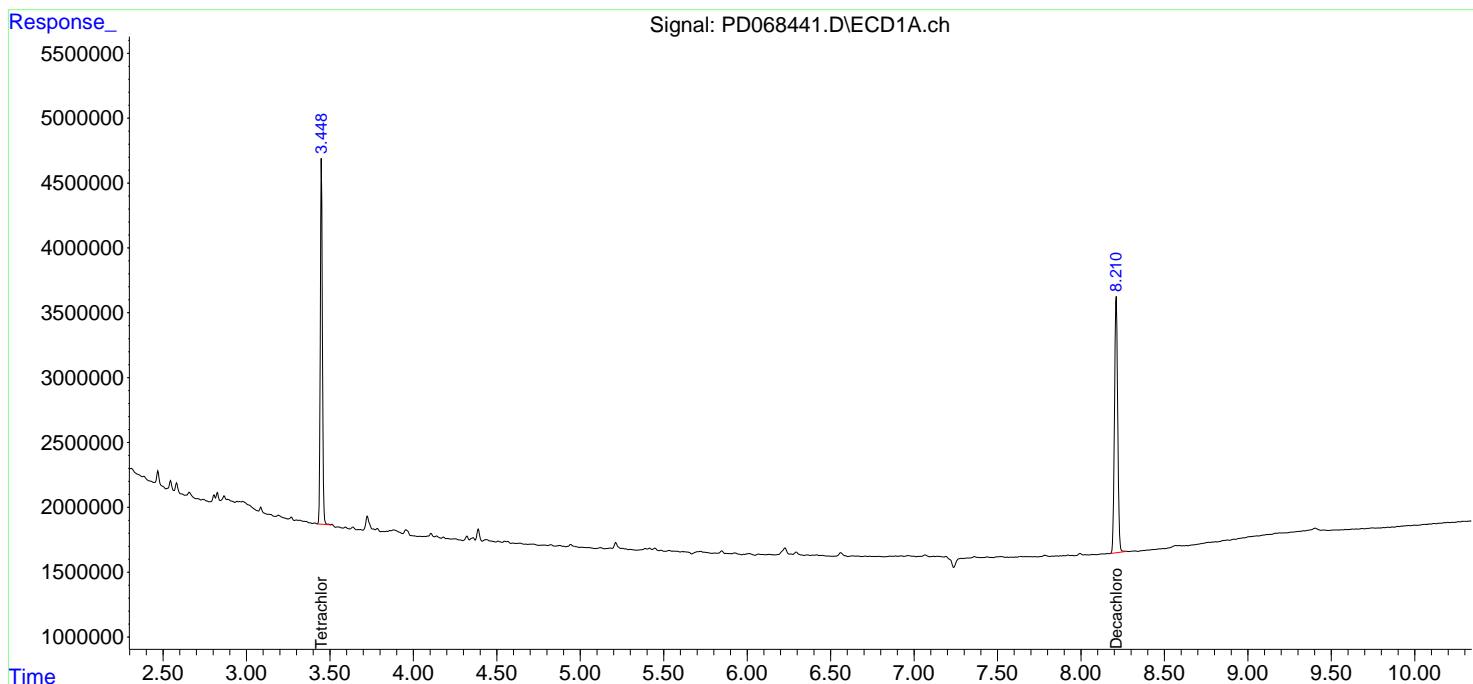
-----  
 (f)=RT Delta > 1/2 Window (#)=Amounts differ by > 25% (m)=manual int.

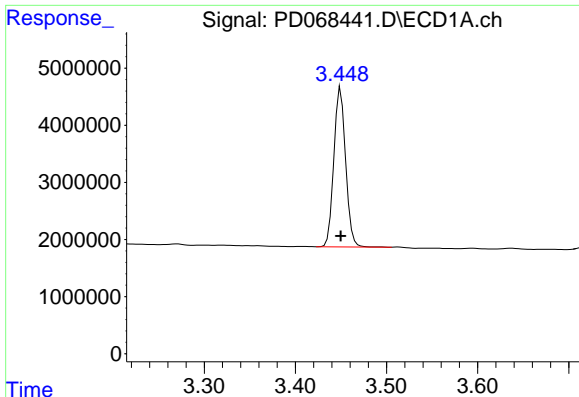
Data Path : Z:\pestpcbsrv\HPCHEM1\ECD\_D\Data\PD030922\  
 Data File : PD068441.D  
 Signal(s) : Signal #1: ECD1A.ch Signal #2: ECD2B.ch  
 Acq On : 09 Mar 2022 22:55  
 Operator : AR\AJ  
 Sample : N1830-05  
 Misc :  
 ALS Vial : 23 Sample Multiplier: 1

Instrument :  
 ECD\_D  
 ClientSampleId :  
 11977

Integration File signal 1: autoint1.e  
 Integration File signal 2: autoint2.e  
 Quant Time: Mar 10 02:09:01 2022  
 Quant Method : Z:\pestpcbsrv\HPCHEM1\ECD\_D\Method\PD030122.M  
 Quant Title : GC Extractables  
 QLast Update : Tue Mar 01 06:48:49 2022  
 Response via : Initial Calibration  
 Integrator: ChemStation

Volume Inj. : 2 µl  
 Signal #1 Phase : ZB-MR2 Signal #2 Phase: ZB-MR1  
 Signal #1 Info : 30M x 0.32mm x0.2 Signal #2 Info : 30M x 0.32mm x 0.50µm

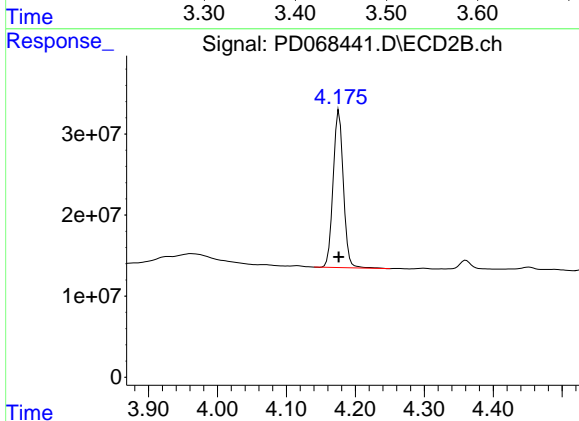




#1 Tetrachloro-m-xylene

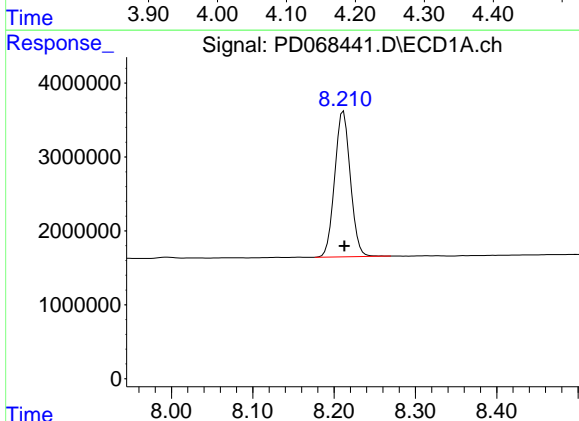
R.T.: 3.450 min  
Delta R.T.: 0.000 min  
Response: 25086225  
Conc: 21.40 ng/ml

Instrument :  
ECD\_D  
ClientSampleId :  
11977



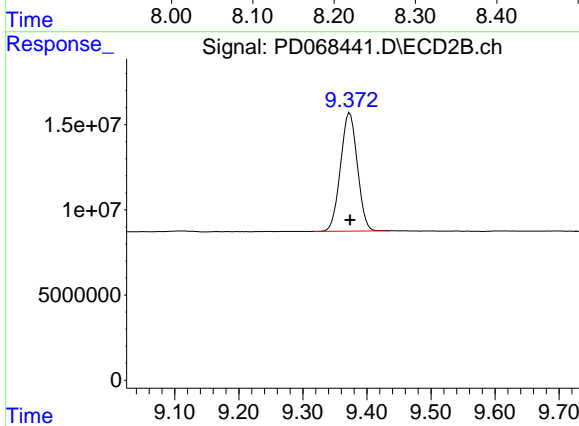
#1 Tetrachloro-m-xylene

R.T.: 4.176 min  
Delta R.T.: 0.000 min  
Response: 199366766  
Conc: 20.77 ng/ml



#28 Decachlorobiphenyl

R.T.: 8.212 min  
Delta R.T.: -0.001 min  
Response: 26335363  
Conc: 22.63 ng/ml



#28 Decachlorobiphenyl

R.T.: 9.373 min  
Delta R.T.: 0.000 min  
Response: 126478094  
Conc: 21.33 ng/ml