

Data Path : Z:\pestpcbsrv\HPCHEM1\ECD_D\Data\PD031021\
 Data File : PD061504.D
 Signal(s) : Signal #1: ECD1A.ch Signal #2: ECD2B.ch
 Acq On : 10 Mar 2021 10:32
 Operator : AR\AJ
 Sample : RESCHK
 Misc :
 ALS Vial : 4 Sample Multiplier: 1

Instrument :
 ECD_D
 ClientSampleId :
 RESCHK

Integration File signal 1: autoint1.e
 Integration File signal 2: autoint2.e
 Quant Time: Mar 11 04:10:19 2021
 Quant Method : Z:\pestpcbsrv\HPCHEM1\ECD_D\Method\PD031021.M
 Quant Title : GC Extractables
 QLast Update : Thu Mar 11 04:08:41 2021
 Response via : Initial Calibration
 Integrator: ChemStation

Volume Inj. : 2 µl
 Signal #1 Phase : ZB-MR2 Signal #2 Phase: ZB-MR1
 Signal #1 Info : 30M x 0.32mm x0.2 Signal #2 Info : 30M x 0.32mm x 0.50µm

| Compound | RT#1 | RT#2 | Resp#1 | Resp#2 | ng/ml | ng/ml |
|-----------------------------|-------|-------|----------|---------|--------|--------|
| ----- | | | | | | |
| System Monitoring Compounds | | | | | | |
| 1) SA Tetrachlo... | 3.486 | 3.982 | 15844512 | 166.8E6 | 19.767 | 19.987 |
| 28) SA Decachlor... | 8.256 | 9.036 | 23065633 | 160.2E6 | 19.127 | 18.564 |
| Target Compounds | | | | | | |
| 9) A Endosulfan I | 5.548 | 6.209 | 10059554 | 101.4E6 | 9.260 | 9.749 |
| 10) B gamma-Chl... | 5.435 | 6.086 | 10811288 | 107.4E6 | 9.290 | 9.501 |
| 12) B 4,4'-DDE | 5.656 | 6.315 | 20266779 | 214.5E6 | 18.456 | 19.317 |
| 13) MA Dieldrin | 5.792 | 6.466 | 21216444 | 215.6E6 | 18.487 | 19.508 |
| 19) B Endosulfa... | 6.705 | 7.238 | 18659065 | 169.8E6 | 17.948 | 18.430 |
| 20) A Methoxychlor | 6.961 | 7.560 | 47657068 | 373.0E6 | 84.546 | 80.619 |
| 21) B Endrin ke... | 7.199 | 7.708 | 22089183 | 165.5E6 | 17.878 | 17.940 |
| ----- | | | | | | |

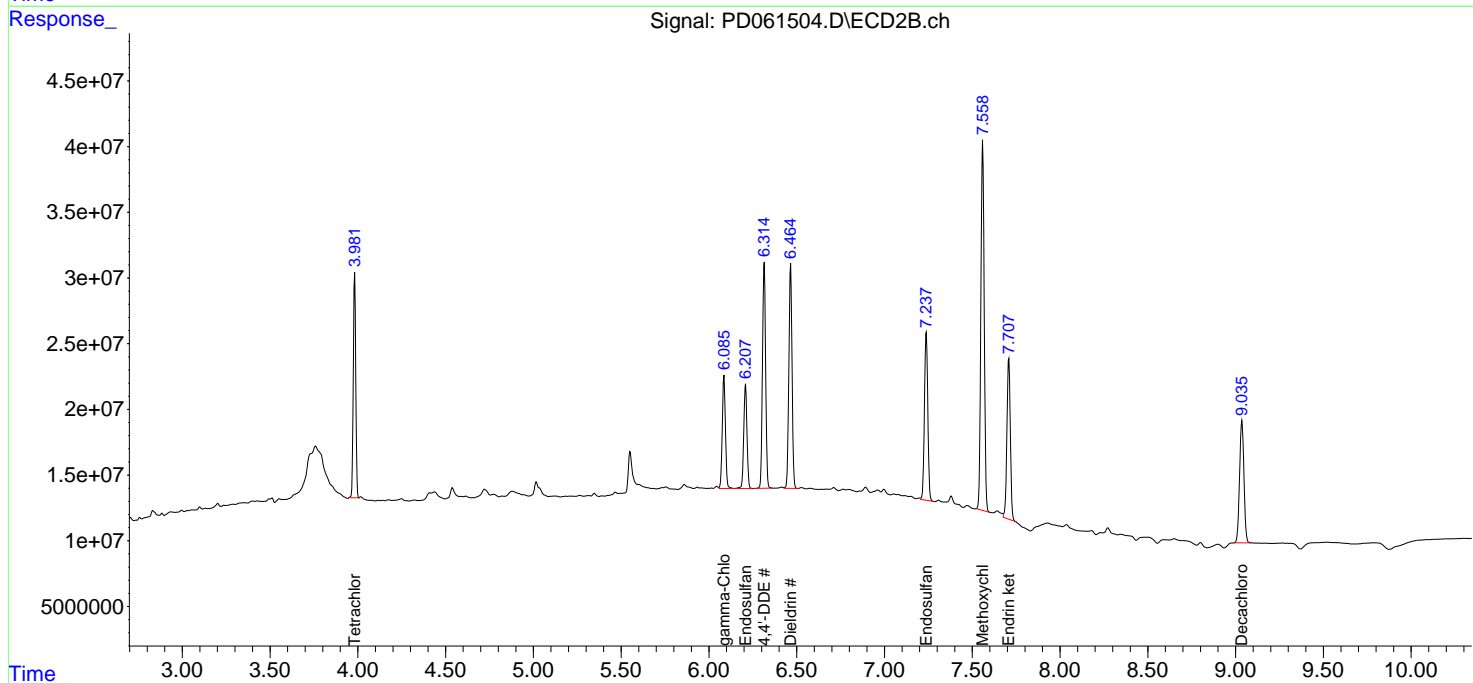
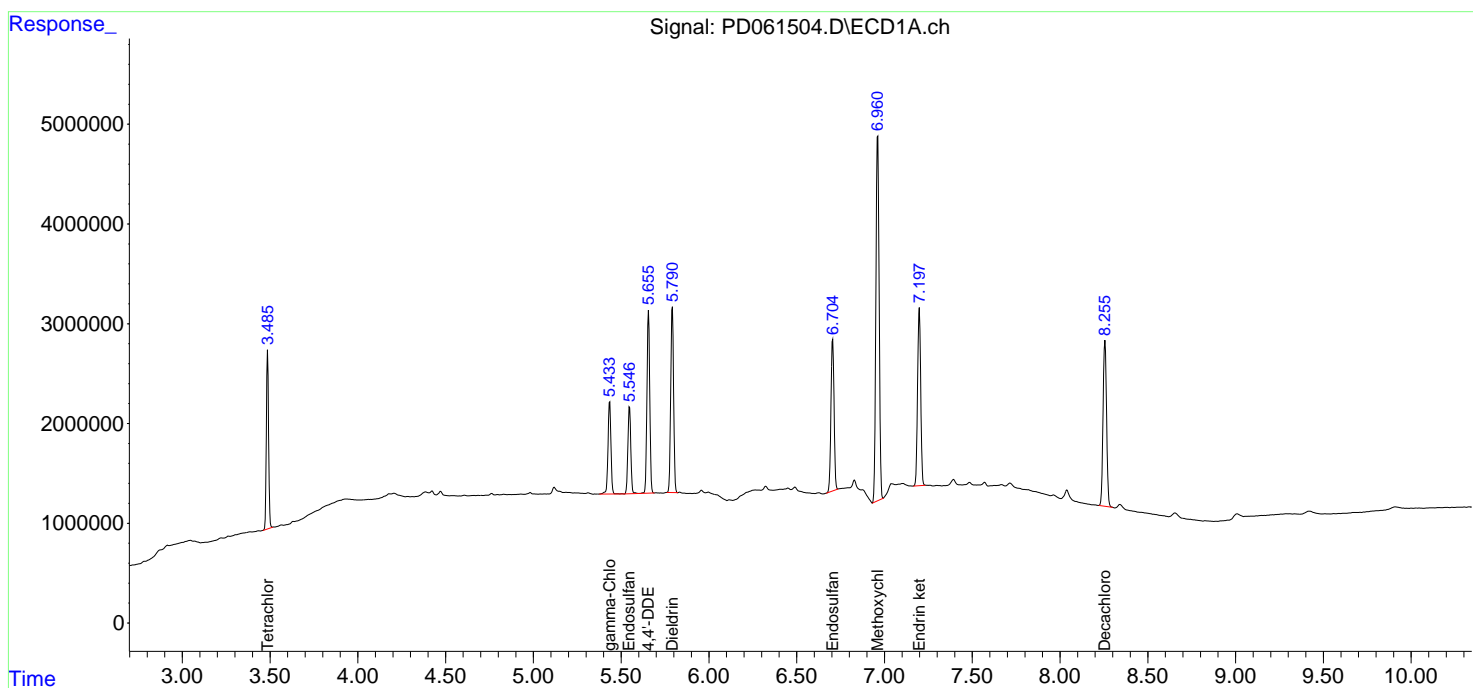
(f)=RT Delta > 1/2 Window (#)=Amounts differ by > 25% (m)=manual int.

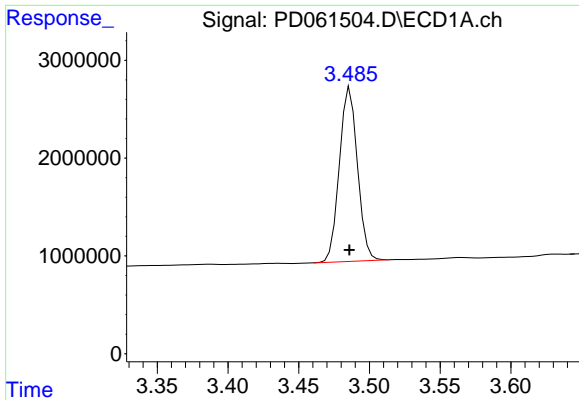
Data Path : Z:\pestpcbsrv\HPCHEM1\ECD_D\Data\PD031021\
 Data File : PD061504.D
 Signal(s) : Signal #1: ECD1A.ch Signal #2: ECD2B.ch
 Acq On : 10 Mar 2021 10:32
 Operator : AR\AJ
 Sample : RESCHK
 Misc :
 ALS Vial : 4 Sample Multiplier: 1

Instrument :
 ECD_D
 ClientSampled :
 RESCHK

Integration File signal 1: autoint1.e
 Integration File signal 2: autoint2.e
 Quant Time: Mar 11 04:10:19 2021
 Quant Method : Z:\pestpcbsrv\HPCHEM1\ECD_D\Method\PD031021.M
 Quant Title : GC Extractables
 QLast Update : Thu Mar 11 04:08:41 2021
 Response via : Initial Calibration
 Integrator: ChemStation

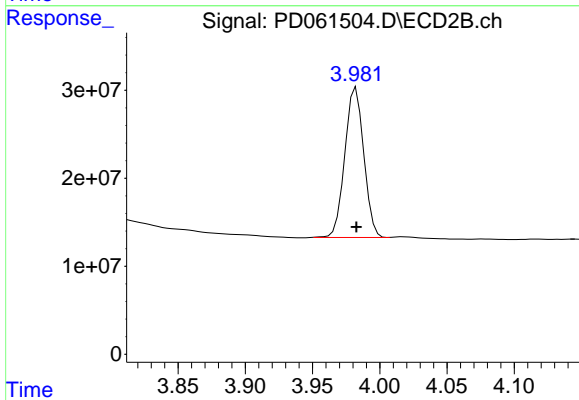
Volume Inj. : 2 µl
 Signal #1 Phase : ZB-MR2 Signal #2 Phase: ZB-MR1
 Signal #1 Info : 30M x 0.32mm x0.2 Signal #2 Info : 30M x 0.32mm x 0.50µm



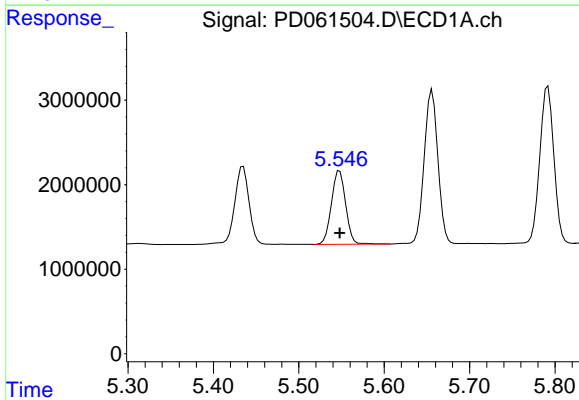


#1 Tetrachloro-m-xylene
 R.T.: 3.486 min
 Delta R.T.: 0.000 min
 Response: 15844512
 Conc: 19.77 ng/ml

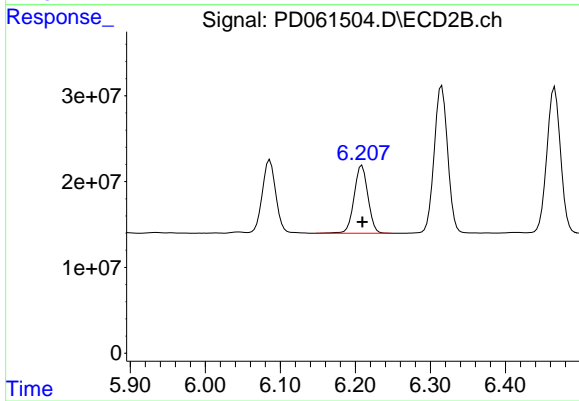
Instrument :
 ECD_D
 ClientSampled :
 RESCHK



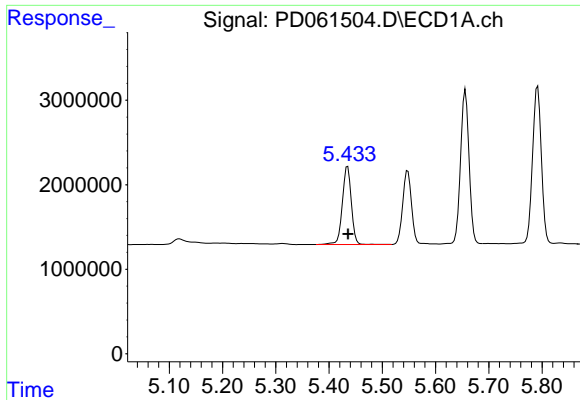
#1 Tetrachloro-m-xylene
 R.T.: 3.982 min
 Delta R.T.: 0.000 min
 Response: 166753398
 Conc: 19.99 ng/ml



#9 Endosulfan I
 R.T.: 5.548 min
 Delta R.T.: 0.000 min
 Response: 10059554
 Conc: 9.26 ng/ml



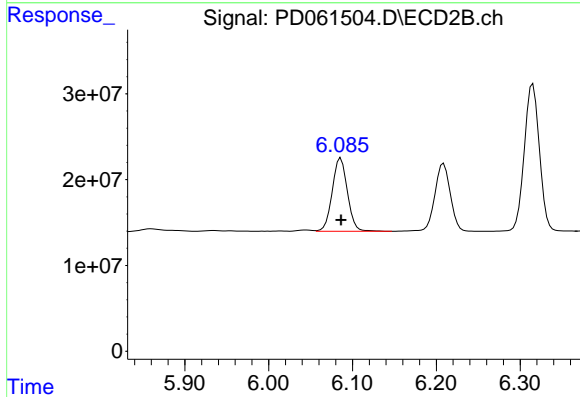
#9 Endosulfan I
 R.T.: 6.209 min
 Delta R.T.: 0.000 min
 Response: 101428367
 Conc: 9.75 ng/ml



#10 gamma-Chlordane

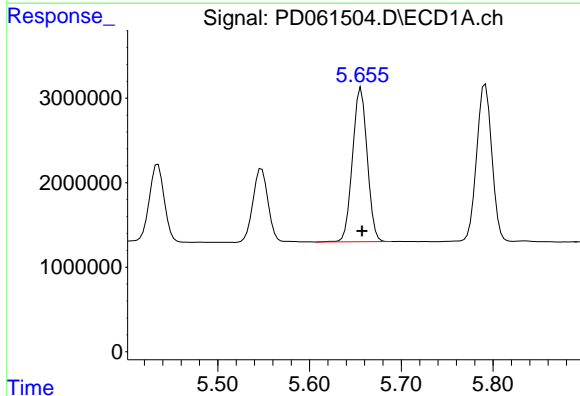
R.T.: 5.435 min
Delta R.T.: 0.000 min
Response: 10811288
Conc: 9.29 ng/ml

Instrument :
ECD_D
ClientSampled :
RESCHK



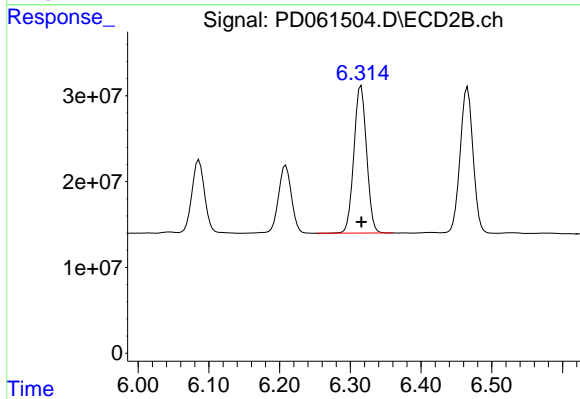
#10 gamma-Chlordane

R.T.: 6.086 min
Delta R.T.: 0.000 min
Response: 107440238
Conc: 9.50 ng/ml



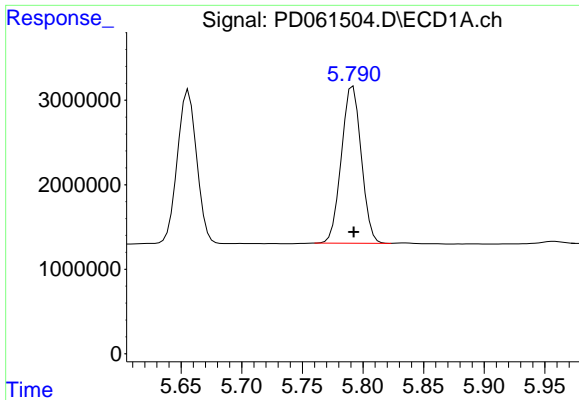
#12 4,4'-DDE

R.T.: 5.656 min
Delta R.T.: 0.000 min
Response: 20266779
Conc: 18.46 ng/ml



#12 4,4'-DDE

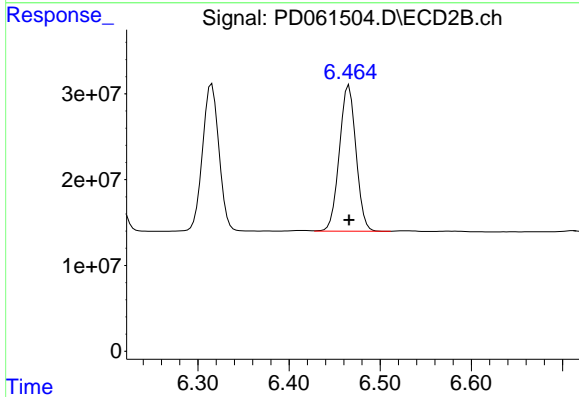
R.T.: 6.315 min
Delta R.T.: 0.000 min
Response: 214546621
Conc: 19.32 ng/ml



#13 Dieldrin

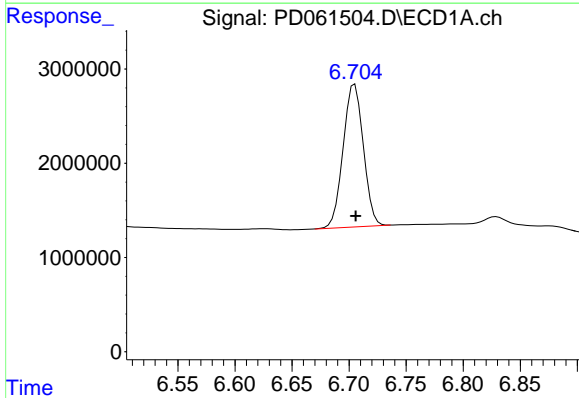
R.T.: 5.792 min
 Delta R.T.: 0.000 min
 Response: 21216444
 Conc: 18.49 ng/ml

Instrument :
 ECD_D
 ClientSampled :
 RESCHK



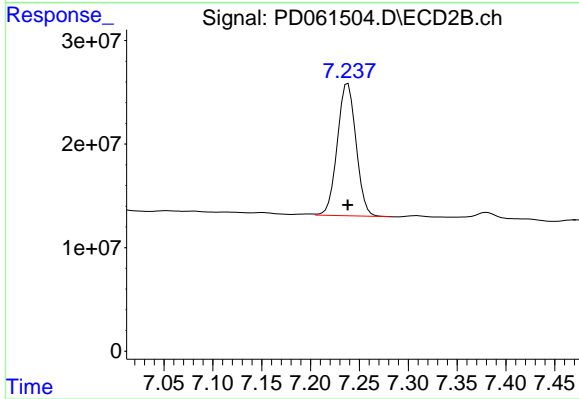
#13 Dieldrin

R.T.: 6.466 min
 Delta R.T.: 0.000 min
 Response: 21557953
 Conc: 19.51 ng/ml



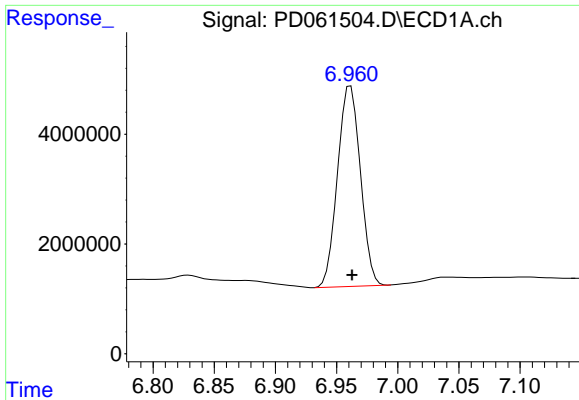
#19 Endosulfan Sulfate

R.T.: 6.705 min
 Delta R.T.: 0.000 min
 Response: 18659065
 Conc: 17.95 ng/ml



#19 Endosulfan Sulfate

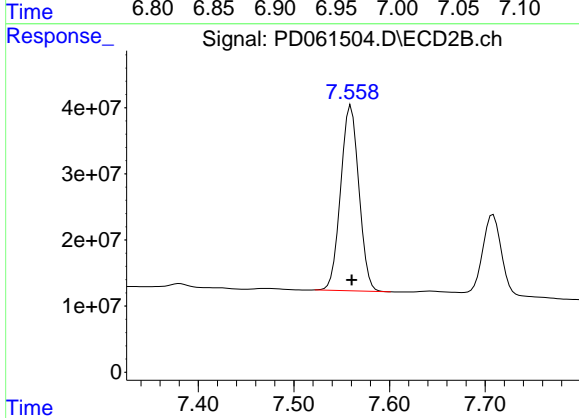
R.T.: 7.238 min
 Delta R.T.: 0.000 min
 Response: 169753939
 Conc: 18.43 ng/ml



#20 Methoxychlor

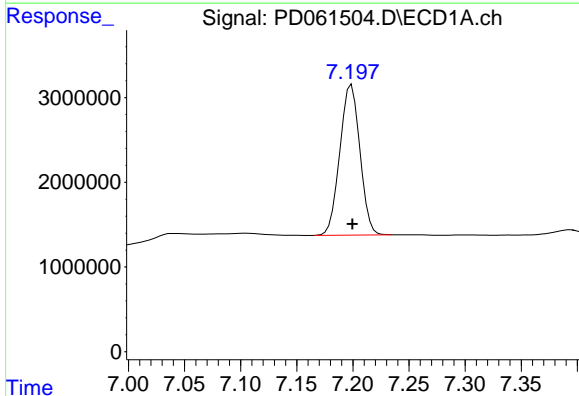
R.T.: 6.961 min
 Delta R.T.: -0.001 min
 Response: 47657068
 Conc: 84.55 ng/ml

Instrument :
 ECD_D
 ClientSampleId :
 RESCHK



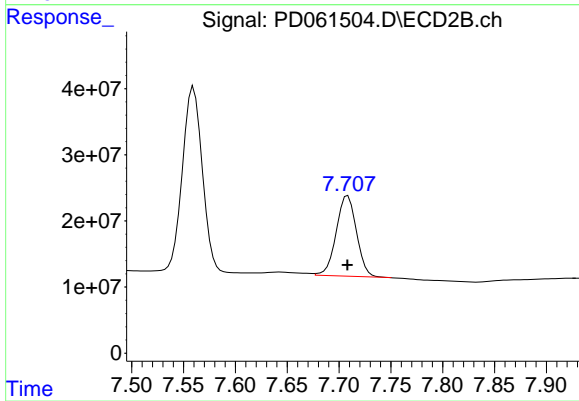
#20 Methoxychlor

R.T.: 7.560 min
 Delta R.T.: 0.000 min
 Response: 372978606
 Conc: 80.62 ng/ml



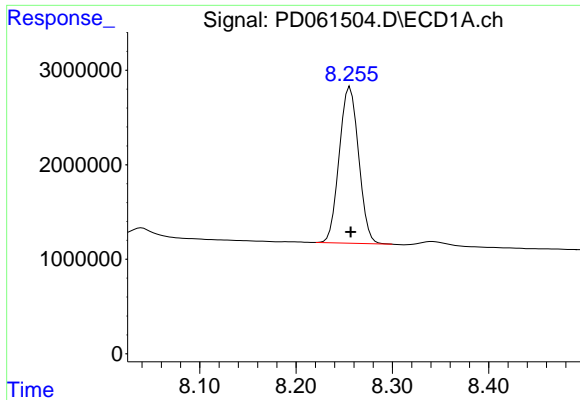
#21 Endrin ketone

R.T.: 7.199 min
 Delta R.T.: 0.000 min
 Response: 22089183
 Conc: 17.88 ng/ml



#21 Endrin ketone

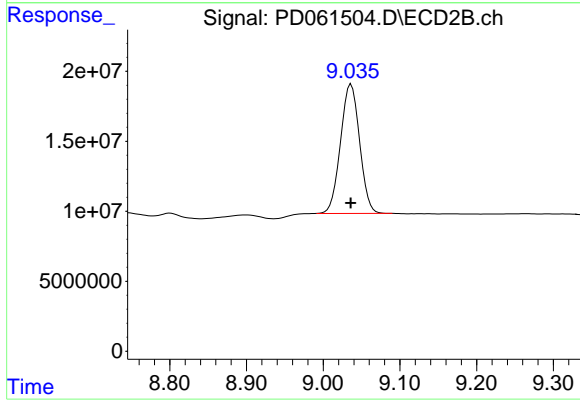
R.T.: 7.708 min
 Delta R.T.: 0.000 min
 Response: 165492516
 Conc: 17.94 ng/ml



#28 Decachlorobiphenyl

R.T.: 8.256 min
Delta R.T.: 0.000 min
Response: 23065633
Conc: 19.13 ng/ml

Instrument :
ECD_D
ClientSampleId :
RESCHK



#28 Decachlorobiphenyl

R.T.: 9.036 min
Delta R.T.: 0.000 min
Response: 160170397
Conc: 18.56 ng/ml