

Data Path : Z:\pestpcbsrv\HPCHEM1\ECD\_D\Data\PD031021\  
 Data File : PD061507.D  
 Signal(s) : Signal #1: ECD1A.ch Signal #2: ECD2B.ch  
 Acq On : 10 Mar 2021 11:14  
 Operator : AR\AJ  
 Sample : PSTDICC050  
 Misc :  
 ALS Vial : 7 Sample Multiplier: 1

Instrument :  
 ECD\_D  
 ClientSampleId :  
 PSTDICC050

Integration File signal 1: autoint1.e  
 Integration File signal 2: autoint2.e  
 Quant Time: Mar 10 12:31:31 2021  
 Quant Method : Z:\pestpcbsrv\HPCHEM1\ECD\_D\Method\PD031021.M  
 Quant Title : GC Extractables  
 QLast Update : Wed Mar 10 12:30:41 2021  
 Response via : Initial Calibration  
 Integrator: ChemStation

Volume Inj. : 2 µl  
 Signal #1 Phase : ZB-MR2 Signal #2 Phase: ZB-MR1  
 Signal #1 Info : 30M x 0.32mm x0.2 Signal #2 Info : 30M x 0.32mm x 0.50µm

	Compound	RT#1	RT#2	Resp#1	Resp#2	ng/ml	ng/ml
-----							
System Monitoring Compounds							
1)	SA Tetrachlo...	3.486	3.982	42058370	437.8E6	50.000	50.000
28)	SA Decachlor...	8.256	9.037	61255853	440.2E6	50.000	50.000
Target Compounds							
2)	A alpha-BHC	3.926	4.371	65390230	690.9E6	50.000	50.000
3)	MA gamma-BHC...	4.211	4.655	61914497	634.9E6	50.000	50.000
4)	MA Heptachlor	4.514	5.163	65182390	662.0E6	50.000	50.000
5)	MB Aldrin	4.764	5.468	61874737	626.2E6	50.000	50.000
6)	B beta-BHC	4.460	4.824	27898683	262.2E6	50.000	50.000
7)	B delta-BHC	4.666	5.040	64388063	634.9E6	50.000	50.000
8)	B Heptachlo...	5.208	5.853	59401299	562.8E6	50.000	50.000
9)	A Endosulfan I	5.548	6.210	56699888	537.8E6	50.000	50.000
10)	B gamma-Chl...	5.435	6.087	60868029	587.5E6	50.000	50.000
11)	B alpha-Chl...	5.494	6.160	60438736	565.2E6	50.000	50.000
12)	B 4,4'-DDE	5.657	6.316	58190318	575.3E6	50.000	50.000
13)	MA Dieldrin	5.792	6.466	60459189	573.7E6	50.000	50.000
14)	MA Endrin	6.051	6.684	55028726	489.8E6	50.000	50.000
15)	B Endosulfa...	6.323	6.892	52423777	462.8E6	50.000	50.000
16)	A 4,4'-DDD	6.174	6.805	49809977	467.4E6	50.000	50.000
17)	MA 4,4'-DDT	6.416	7.103	53289563	487.1E6	50.000	50.000
18)	B Endrin al...	6.492	7.016	42676110	376.5E6	50.000	50.000
19)	B Endosulfa...	6.706	7.238	54783799	482.1E6	50.000	50.000
20)	A Methoxychlor	6.962	7.561	30212226	238.0E6	50.000	50.000
21)	B Endrin ke...	7.199	7.709	64701475	477.2E6	50.000	50.000
22)	Mirex	7.390	8.163	49591335	311.6E6	50.000	50.000

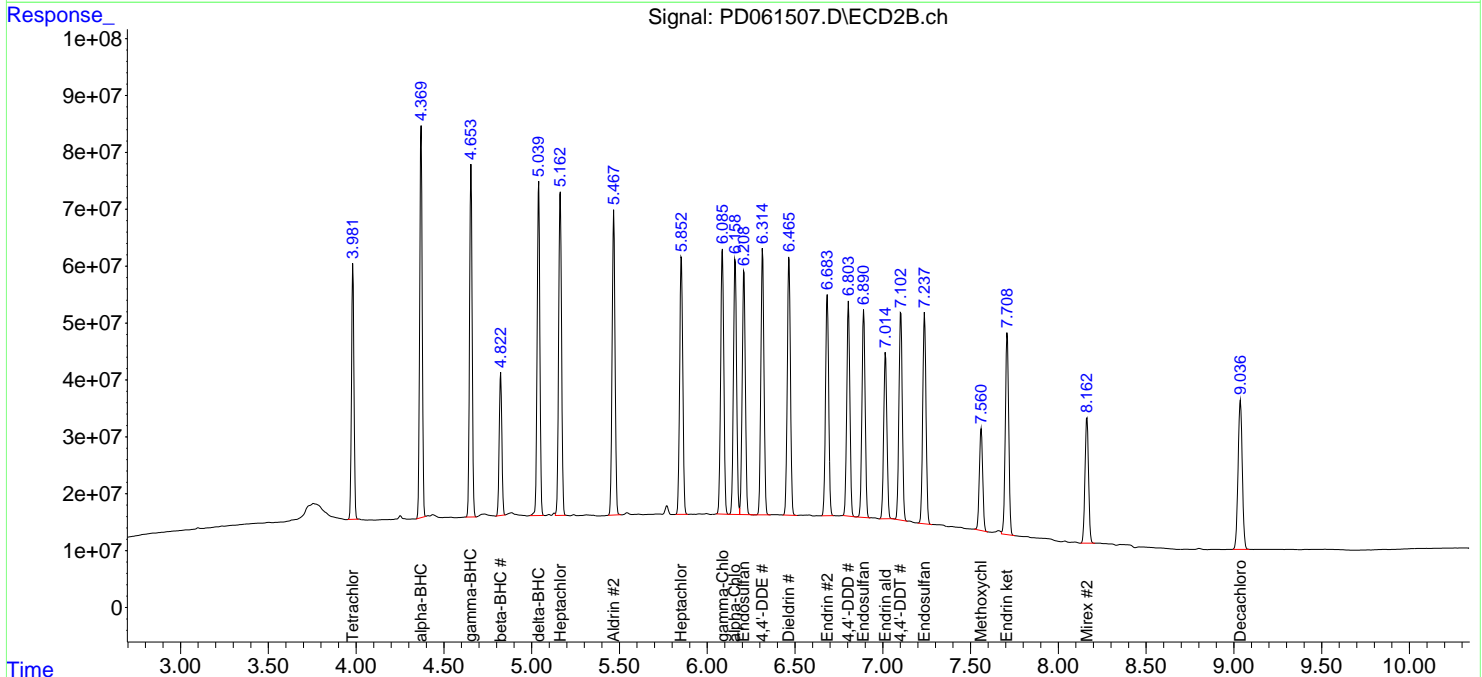
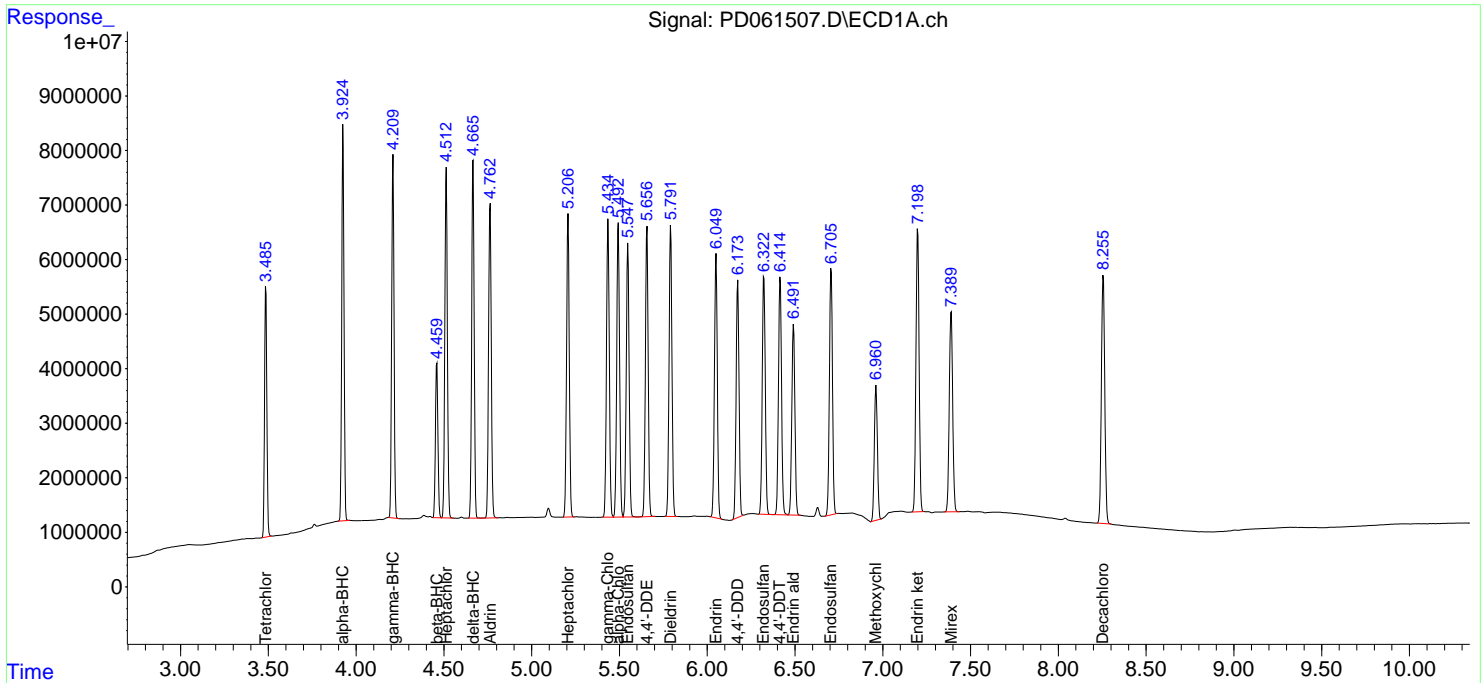
(f)=RT Delta > 1/2 Window (#)=Amounts differ by > 25% (m)=manual int.

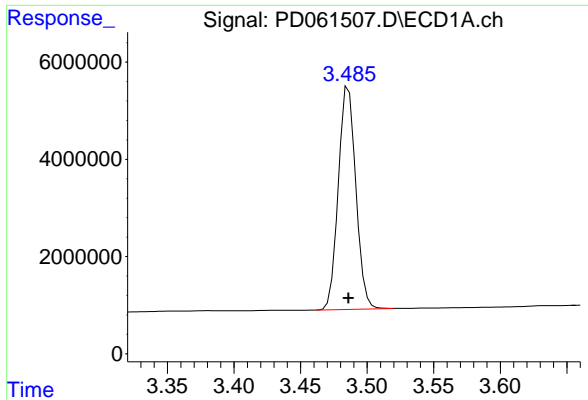
Data Path : Z:\pestpcbsrv\HPCHEM1\ECD\_D\Data\PD031021\  
 Data File : PD061507.D  
 Signal(s) : Signal #1: ECD1A.ch Signal #2: ECD2B.ch  
 Acq On : 10 Mar 2021 11:14  
 Operator : AR\AJ  
 Sample : PSTDICC050  
 Misc :  
 ALS Vial : 7 Sample Multiplier: 1

Instrument :  
 ECD\_D  
 ClientSampleId :  
 PSTDICC050

Integration File signal 1: autoint1.e  
 Integration File signal 2: autoint2.e  
 Quant Time: Mar 10 12:31:31 2021  
 Quant Method : Z:\pestpcbsrv\HPCHEM1\ECD\_D\Method\PD031021.M  
 Quant Title : GC Extractables  
 QLast Update : Wed Mar 10 12:30:41 2021  
 Response via : Initial Calibration  
 Integrator: ChemStation

Volume Inj. : 2 µl  
 Signal #1 Phase : ZB-MR2 Signal #2 Phase: ZB-MR1  
 Signal #1 Info : 30M x 0.32mm x0.2 Signal #2 Info : 30M x 0.32mm x 0.50µm

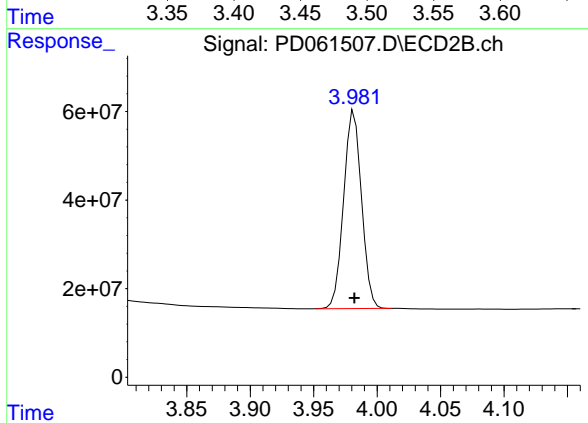




#1 Tetrachloro-m-xylene

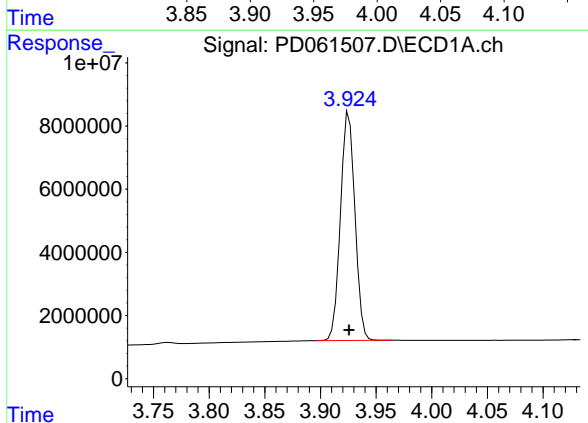
R.T.: 3.486 min  
 Delta R.T.: 0.000 min  
 Response: 42058370  
 Conc: 50.00 ng/ml

Instrument :  
 ECD\_D  
 ClientSampleId :  
 PSTDICC050



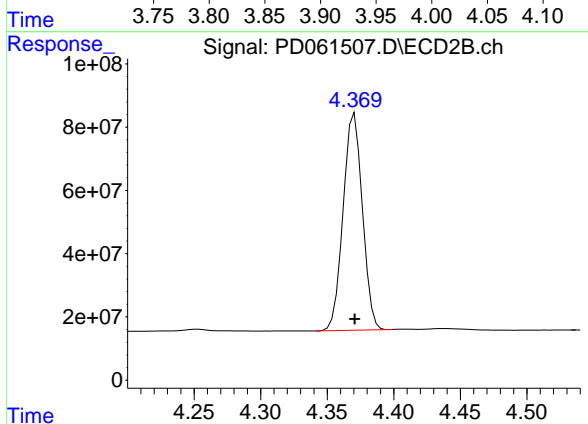
#1 Tetrachloro-m-xylene

R.T.: 3.982 min  
 Delta R.T.: 0.000 min  
 Response: 437814410  
 Conc: 50.00 ng/ml



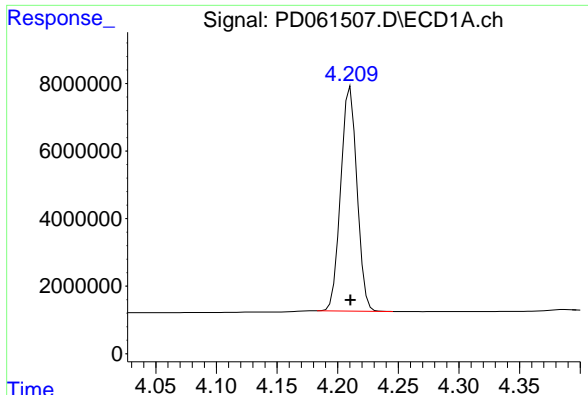
#2 alpha-BHC

R.T.: 3.926 min  
 Delta R.T.: 0.000 min  
 Response: 65390230  
 Conc: 50.00 ng/ml



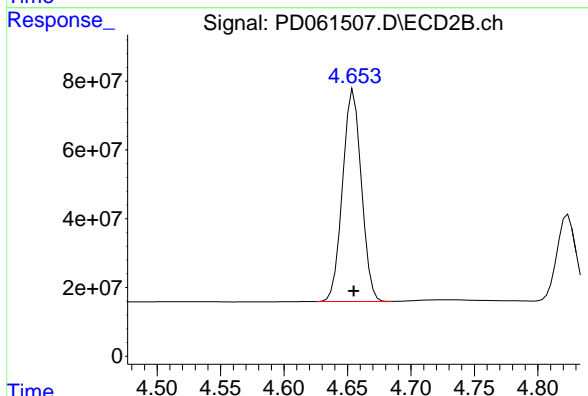
#2 alpha-BHC

R.T.: 4.371 min  
 Delta R.T.: 0.000 min  
 Response: 690900485  
 Conc: 50.00 ng/ml

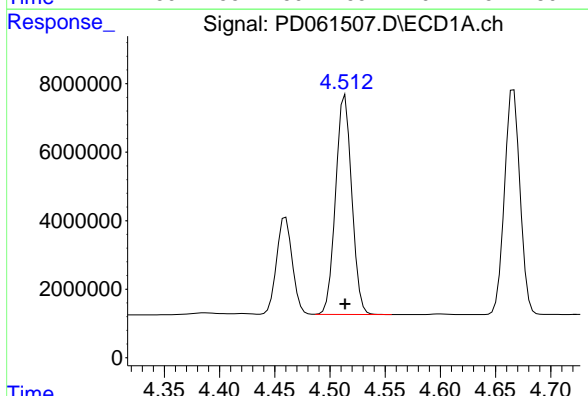


#3 gamma-BHC (Lindane)  
 R.T.: 4.211 min  
 Delta R.T.: 0.000 min  
 Response: 61914497  
 Conc: 50.00 ng/ml

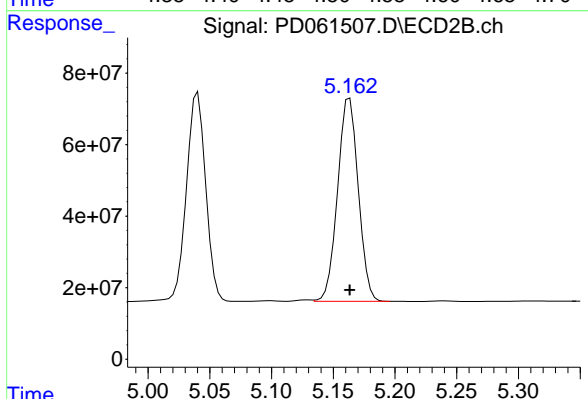
Instrument :  
 ECD\_D  
 ClientSampleId :  
 PSTDICC050



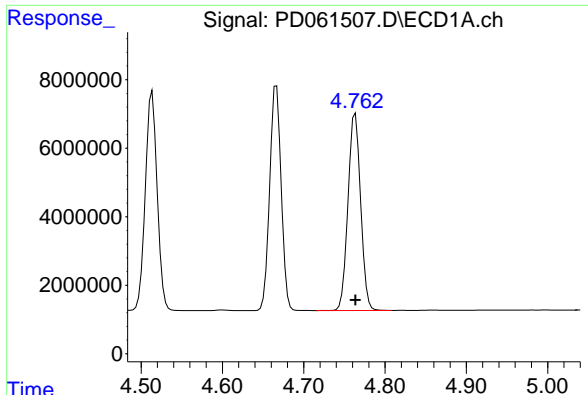
#3 gamma-BHC (Lindane)  
 R.T.: 4.655 min  
 Delta R.T.: 0.000 min  
 Response: 634909568  
 Conc: 50.00 ng/ml



#4 Heptachlor  
 R.T.: 4.514 min  
 Delta R.T.: 0.000 min  
 Response: 65182390  
 Conc: 50.00 ng/ml

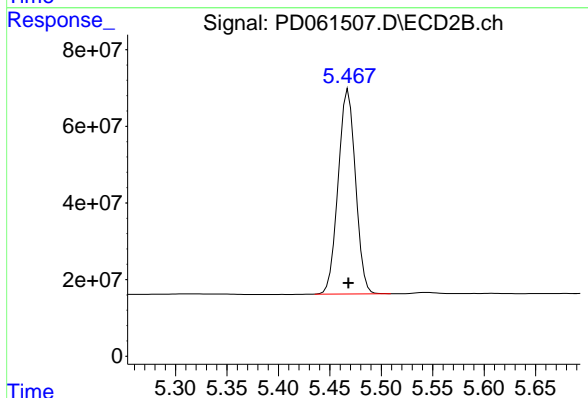


#4 Heptachlor  
 R.T.: 5.163 min  
 Delta R.T.: 0.000 min  
 Response: 662010138  
 Conc: 50.00 ng/ml

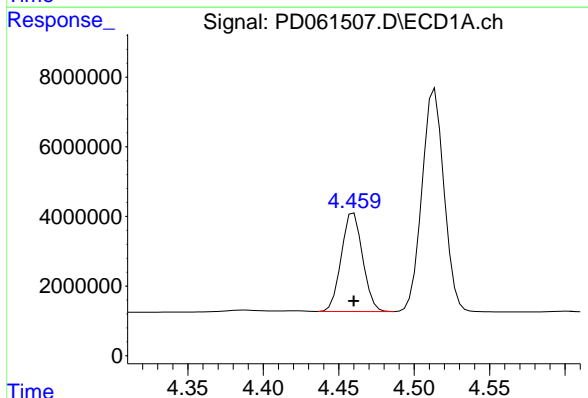


#5 Aldrin  
 R.T.: 4.764 min  
 Delta R.T.: 0.000 min  
 Response: 61874737  
 Conc: 50.00 ng/ml

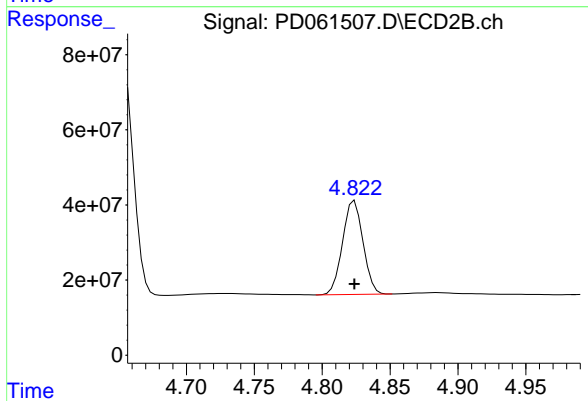
Instrument :  
 ECD\_D  
 ClientSampled :  
 PSTDICC050



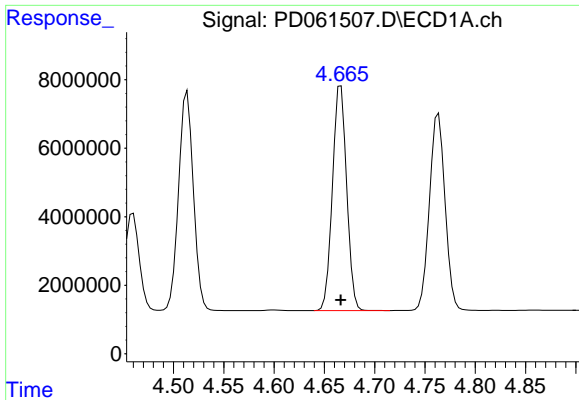
#5 Aldrin  
 R.T.: 5.468 min  
 Delta R.T.: 0.000 min  
 Response: 626195370  
 Conc: 50.00 ng/ml



#6 beta-BHC  
 R.T.: 4.460 min  
 Delta R.T.: 0.000 min  
 Response: 27898683  
 Conc: 50.00 ng/ml



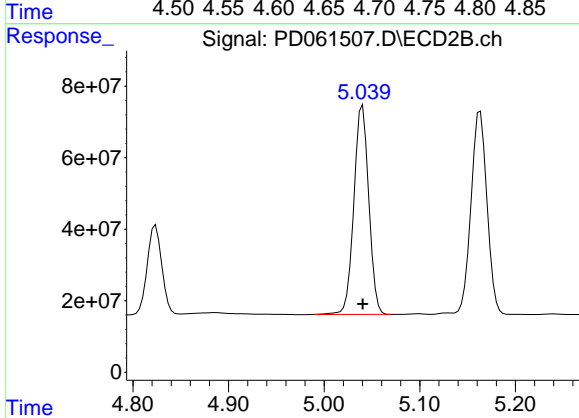
#6 beta-BHC  
 R.T.: 4.824 min  
 Delta R.T.: 0.000 min  
 Response: 262192098  
 Conc: 50.00 ng/ml



#7 delta-BHC

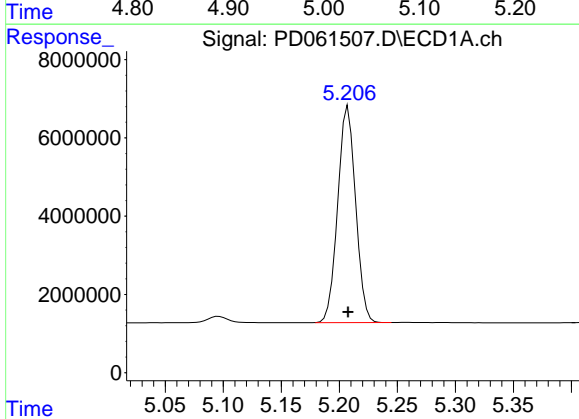
R.T.: 4.666 min  
 Delta R.T.: 0.000 min  
 Response: 64388063  
 Conc: 50.00 ng/ml

Instrument :  
 ECD\_D  
 ClientSampleId :  
 PSTDICC050



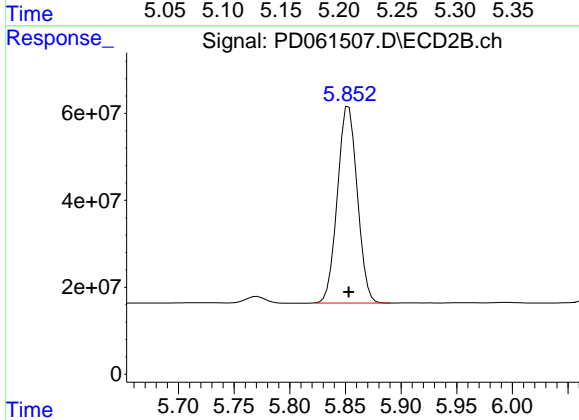
#7 delta-BHC

R.T.: 5.040 min  
 Delta R.T.: 0.000 min  
 Response: 634869330  
 Conc: 50.00 ng/ml



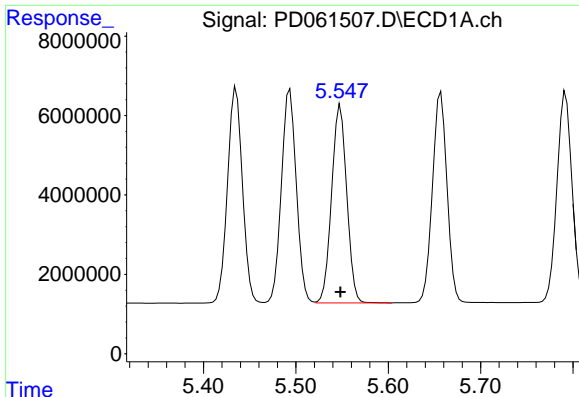
#8 Heptachlor epoxide

R.T.: 5.208 min  
 Delta R.T.: 0.000 min  
 Response: 59401299  
 Conc: 50.00 ng/ml



#8 Heptachlor epoxide

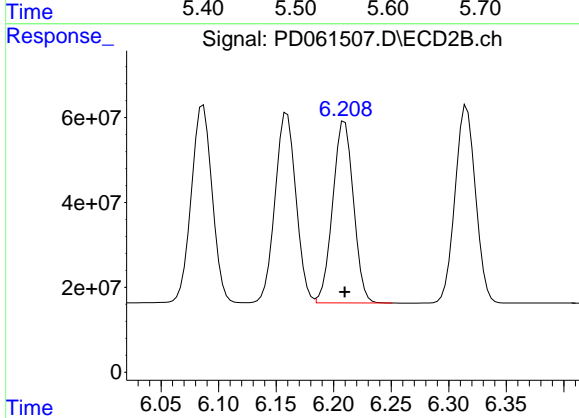
R.T.: 5.853 min  
 Delta R.T.: 0.000 min  
 Response: 562812185  
 Conc: 50.00 ng/ml



#9 Endosulfan I

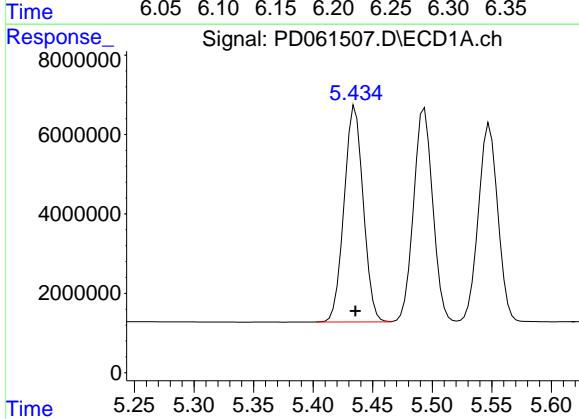
R.T.: 5.548 min  
Delta R.T.: 0.000 min  
Response: 56699888  
Conc: 50.00 ng/ml

Instrument :  
ECD\_D  
ClientSampled :  
PSTDICC050



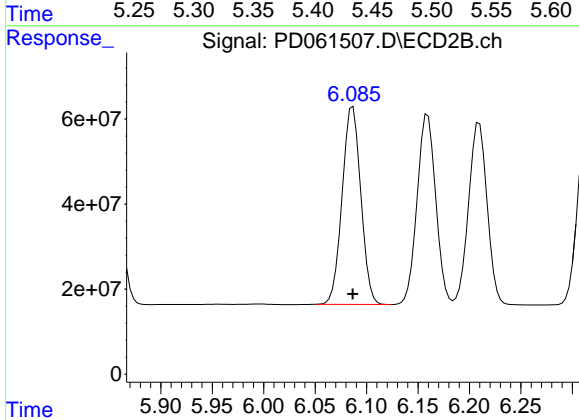
#9 Endosulfan I

R.T.: 6.210 min  
Delta R.T.: 0.000 min  
Response: 537807391  
Conc: 50.00 ng/ml



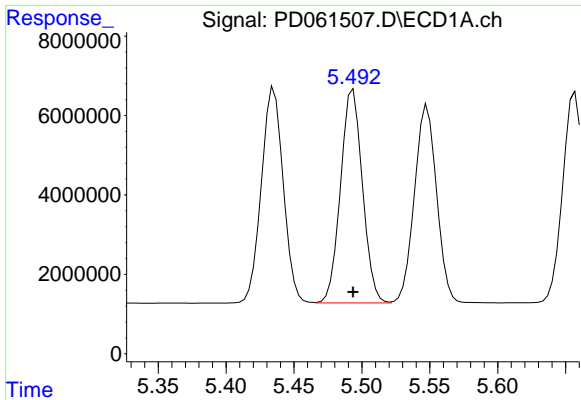
#10 gamma-Chlordane

R.T.: 5.435 min  
Delta R.T.: 0.000 min  
Response: 60868029  
Conc: 50.00 ng/ml



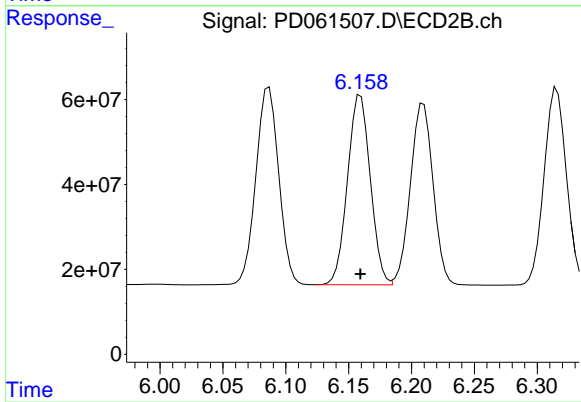
#10 gamma-Chlordane

R.T.: 6.087 min  
Delta R.T.: 0.000 min  
Response: 587496254  
Conc: 50.00 ng/ml

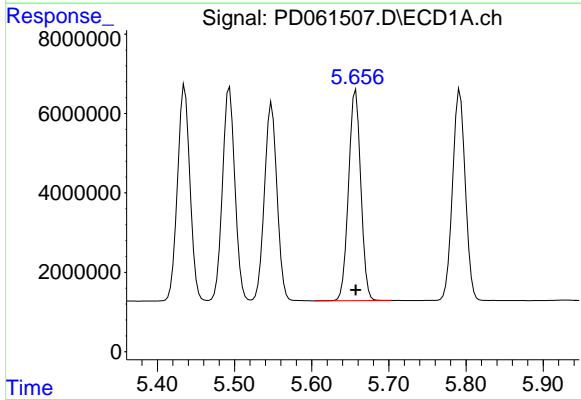


#11 alpha-Chlordane  
R.T.: 5.494 min  
Delta R.T.: 0.000 min  
Response: 60438736  
Conc: 50.00 ng/ml

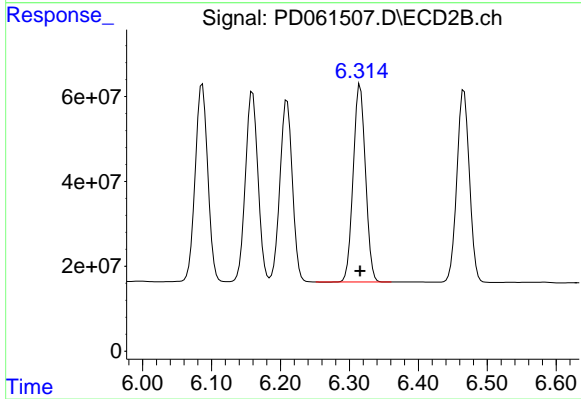
Instrument :  
ECD\_D  
ClientSampleId :  
PSTDICC050



#11 alpha-Chlordane  
R.T.: 6.160 min  
Delta R.T.: 0.000 min  
Response: 565211284  
Conc: 50.00 ng/ml

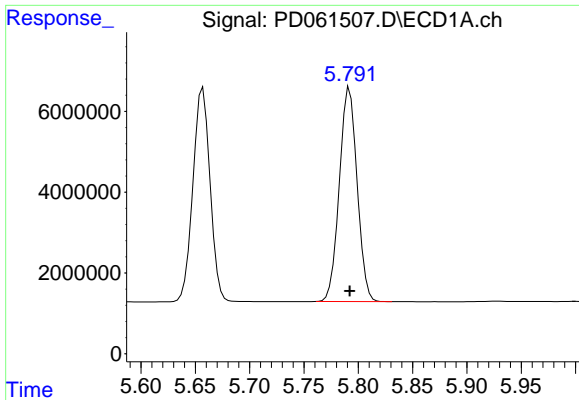


#12 4,4'-DDE  
R.T.: 5.657 min  
Delta R.T.: 0.000 min  
Response: 58190318  
Conc: 50.00 ng/ml



#12 4,4'-DDE  
R.T.: 6.316 min  
Delta R.T.: 0.000 min  
Response: 575292871  
Conc: 50.00 ng/ml

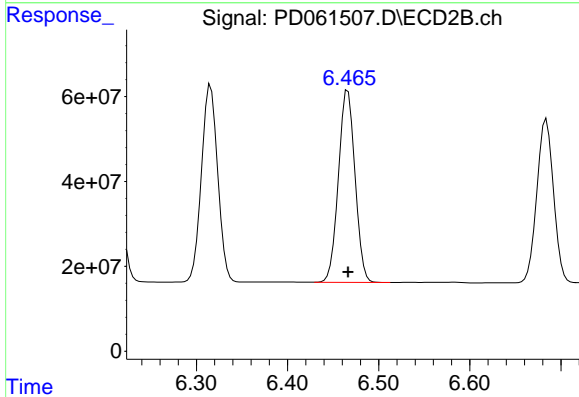




#13 Dieldrin

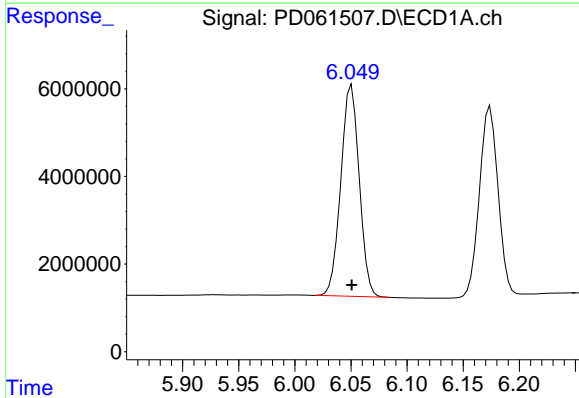
R.T.: 5.792 min  
 Delta R.T.: 0.000 min  
 Response: 60459189  
 Conc: 50.00 ng/ml

Instrument :  
 ECD\_D  
 ClientSampled :  
 PSTDICC050



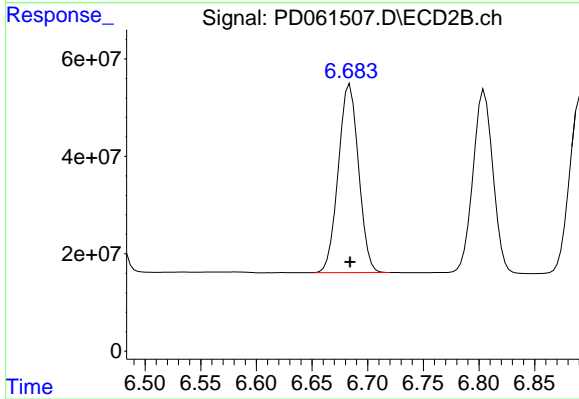
#13 Dieldrin

R.T.: 6.466 min  
 Delta R.T.: 0.000 min  
 Response: 573659398  
 Conc: 50.00 ng/ml



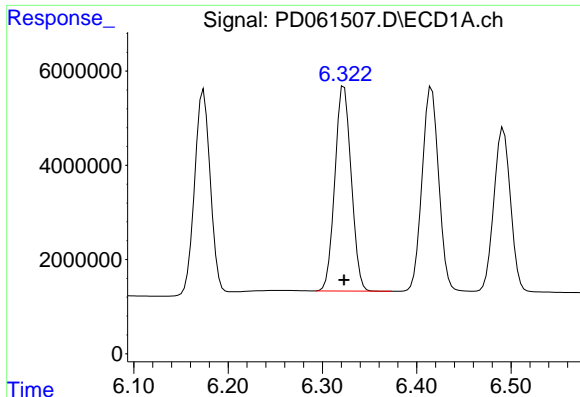
#14 Endrin

R.T.: 6.051 min  
 Delta R.T.: 0.000 min  
 Response: 55028726  
 Conc: 50.00 ng/ml



#14 Endrin

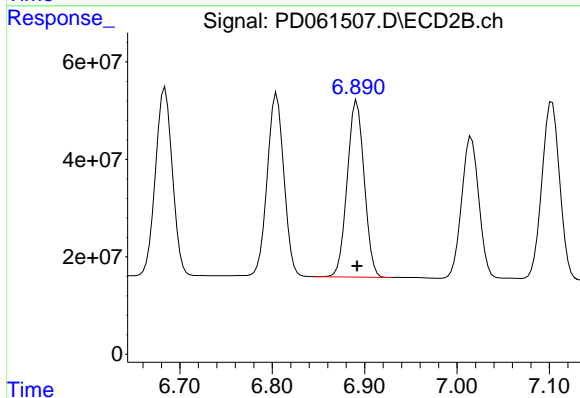
R.T.: 6.684 min  
 Delta R.T.: 0.000 min  
 Response: 489779260  
 Conc: 50.00 ng/ml



#15 Endosulfan II

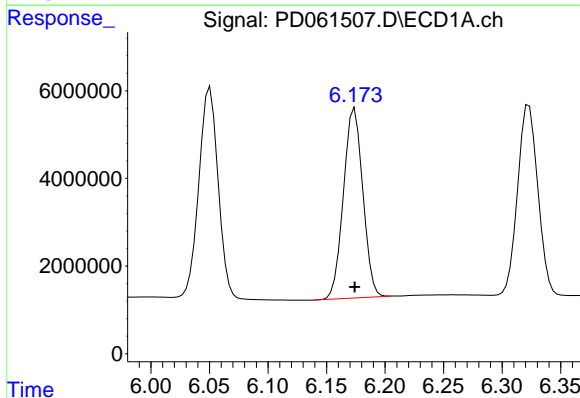
R.T.: 6.323 min  
 Delta R.T.: 0.000 min  
 Response: 52423777  
 Conc: 50.00 ng/ml

Instrument :  
 ECD\_D  
 ClientSampleId :  
 PSTDICC050



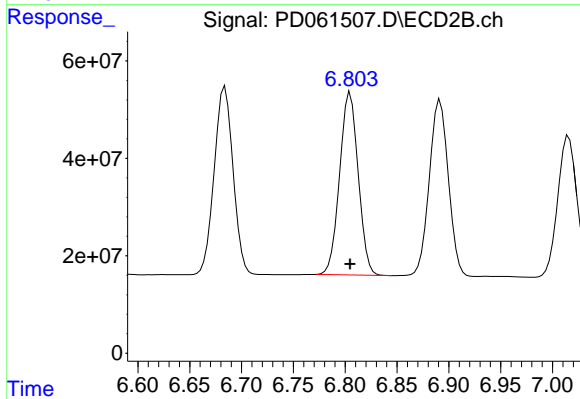
#15 Endosulfan II

R.T.: 6.892 min  
 Delta R.T.: 0.000 min  
 Response: 462769116  
 Conc: 50.00 ng/ml



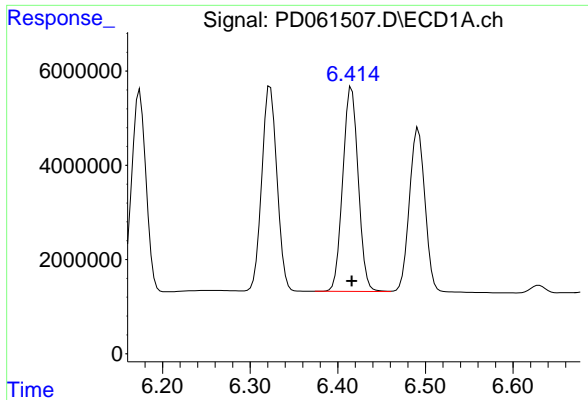
#16 4,4'-DDD

R.T.: 6.174 min  
 Delta R.T.: 0.000 min  
 Response: 49809977  
 Conc: 50.00 ng/ml



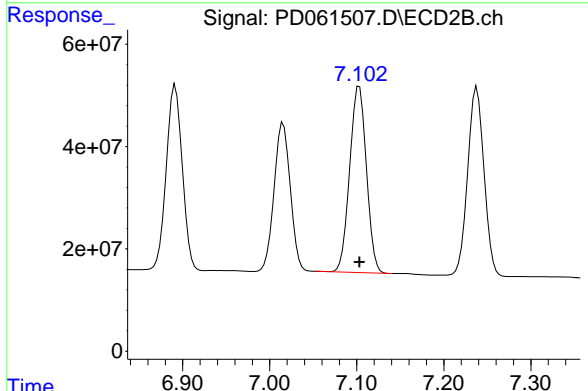
#16 4,4'-DDD

R.T.: 6.805 min  
 Delta R.T.: 0.000 min  
 Response: 467435194  
 Conc: 50.00 ng/ml

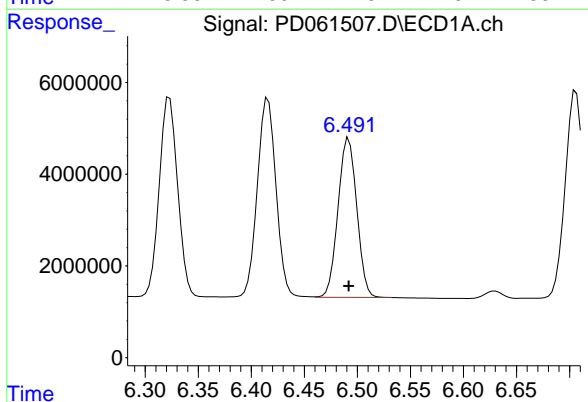


#17 4,4'-DDT  
 R.T.: 6.416 min  
 Delta R.T.: 0.000 min  
 Response: 53289563  
 Conc: 50.00 ng/ml

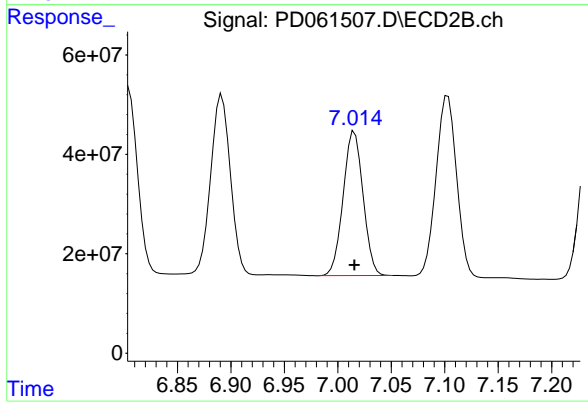
Instrument :  
 ECD\_D  
 ClientSampled :  
 PSTDICC050



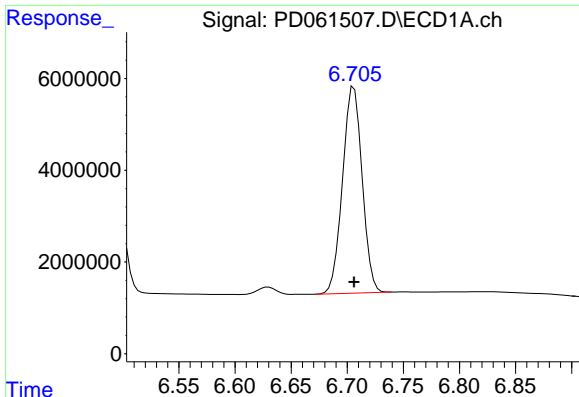
#17 4,4'-DDT  
 R.T.: 7.103 min  
 Delta R.T.: 0.000 min  
 Response: 487086527  
 Conc: 50.00 ng/ml



#18 Endrin aldehyde  
 R.T.: 6.492 min  
 Delta R.T.: 0.000 min  
 Response: 42676110  
 Conc: 50.00 ng/ml



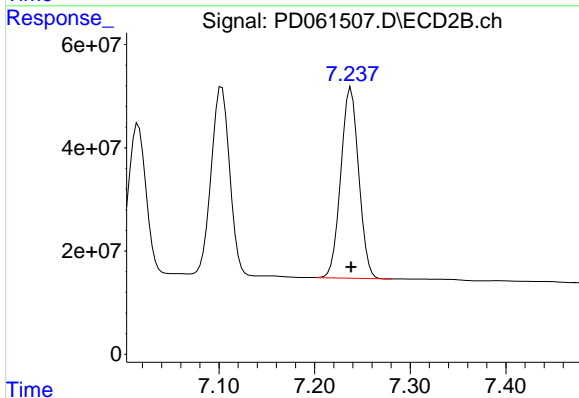
#18 Endrin aldehyde  
 R.T.: 7.016 min  
 Delta R.T.: 0.000 min  
 Response: 376522076  
 Conc: 50.00 ng/ml



#19 Endosulfan Sulfate

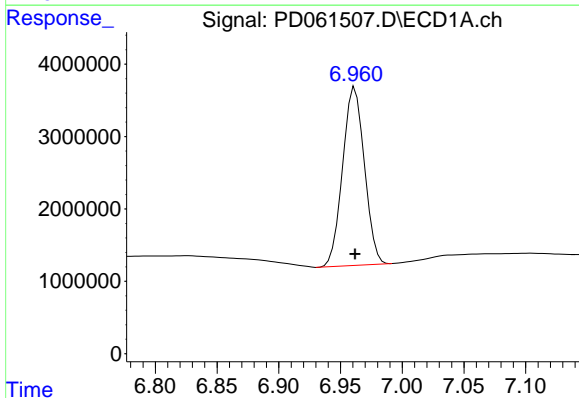
R.T.: 6.706 min  
 Delta R.T.: 0.000 min  
 Response: 54783799  
 Conc: 50.00 ng/ml

Instrument :  
 ECD\_D  
 ClientSampleId :  
 PSTDICC050



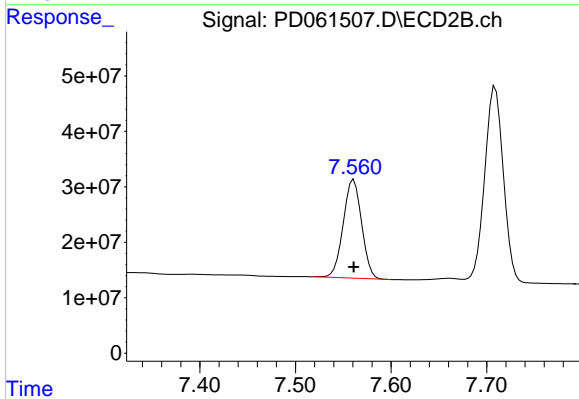
#19 Endosulfan Sulfate

R.T.: 7.238 min  
 Delta R.T.: 0.000 min  
 Response: 482065207  
 Conc: 50.00 ng/ml



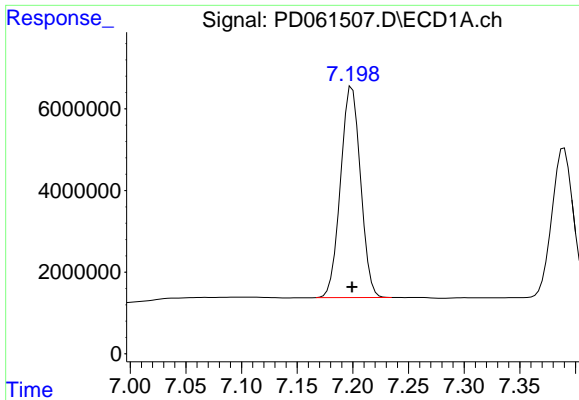
#20 Methoxychlor

R.T.: 6.962 min  
 Delta R.T.: 0.000 min  
 Response: 30212226  
 Conc: 50.00 ng/ml



#20 Methoxychlor

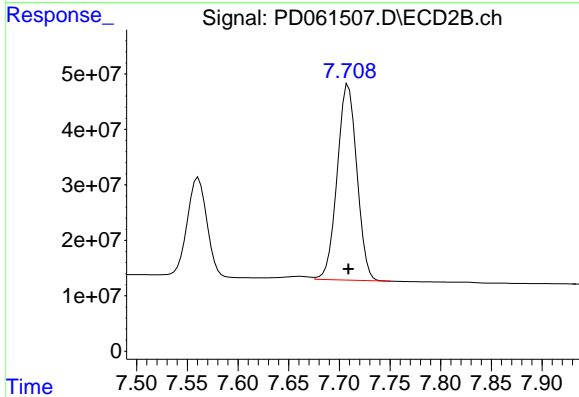
R.T.: 7.561 min  
 Delta R.T.: 0.000 min  
 Response: 238039123  
 Conc: 50.00 ng/ml



#21 Endrin ketone

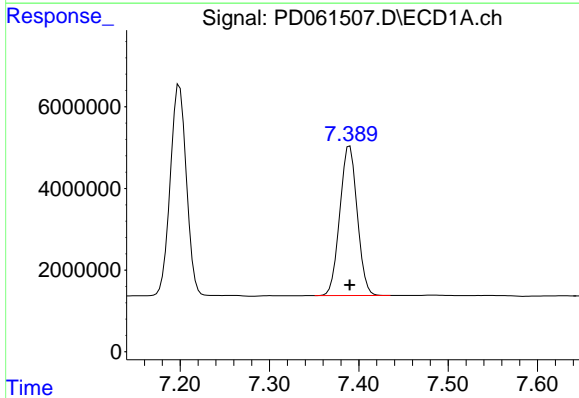
R.T.: 7.199 min  
 Delta R.T.: 0.000 min  
 Response: 64701475  
 Conc: 50.00 ng/ml

Instrument :  
 ECD\_D  
 ClientSampleId :  
 PSTDICC050



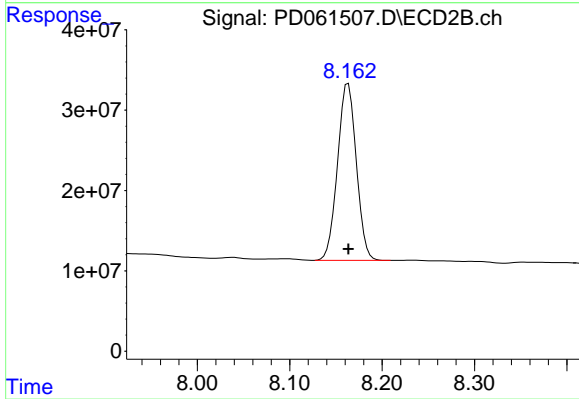
#21 Endrin ketone

R.T.: 7.709 min  
 Delta R.T.: 0.000 min  
 Response: 477192649  
 Conc: 50.00 ng/ml



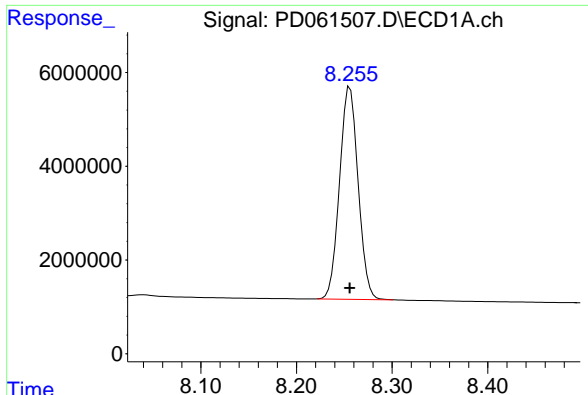
#22 Mirex

R.T.: 7.390 min  
 Delta R.T.: 0.000 min  
 Response: 49591335  
 Conc: 50.00 ng/ml



#22 Mirex

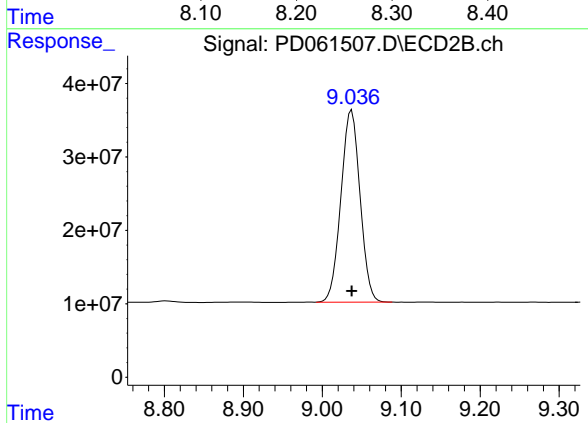
R.T.: 8.163 min  
 Delta R.T.: 0.000 min  
 Response: 311591781  
 Conc: 50.00 ng/ml



#28 Decachlorobiphenyl

R.T.: 8.256 min  
Delta R.T.: 0.000 min  
Response: 61255853  
Conc: 50.00 ng/ml

Instrument :  
ECD\_D  
ClientSampleId :  
PSTDIC050



#28 Decachlorobiphenyl

R.T.: 9.037 min  
Delta R.T.: 0.000 min  
Response: 440213968  
Conc: 50.00 ng/ml