

Data Path : Z:\pestpcbsrv\HPCHEM1\ECD_D\Data\PD031022\
 Data File : PD068458.D
 Signal(s) : Signal #1: ECD1A.ch Signal #2: ECD2B.ch
 Acq On : 10 Mar 2022 16:08
 Operator : AR\AJ
 Sample : PB143233BL
 Misc :
 ALS Vial : 11 Sample Multiplier: 1

Instrument :
 ECD_D
 ClientSampleId :
 PB143233BL

Integration File signal 1: autoint1.e
 Integration File signal 2: autoint2.e
 Quant Time: Mar 10 22:46:47 2022
 Quant Method : Z:\pestpcbsrv\HPCHEM1\ECD_D\Method\PD030122.M
 Quant Title : GC Extractables
 QLast Update : Tue Mar 01 06:48:49 2022
 Response via : Initial Calibration
 Integrator: ChemStation

Volume Inj. : 2 µl
 Signal #1 Phase : ZB-MR2 Signal #2 Phase: ZB-MR1
 Signal #1 Info : 30M x 0.32mm x0.2 Signal #2 Info : 30M x 0.32mm x 0.50µm

Compound	RT#1	RT#2	Resp#1	Resp#2	ng/ml	ng/ml

System Monitoring Compounds						
1) SA Tetrachlo...	3.457	4.176	23234987	195.1E6	19.821	20.326
28) SA Decachlor...	8.220	9.375	26883671	127.7E6	23.102	21.537

Target Compounds

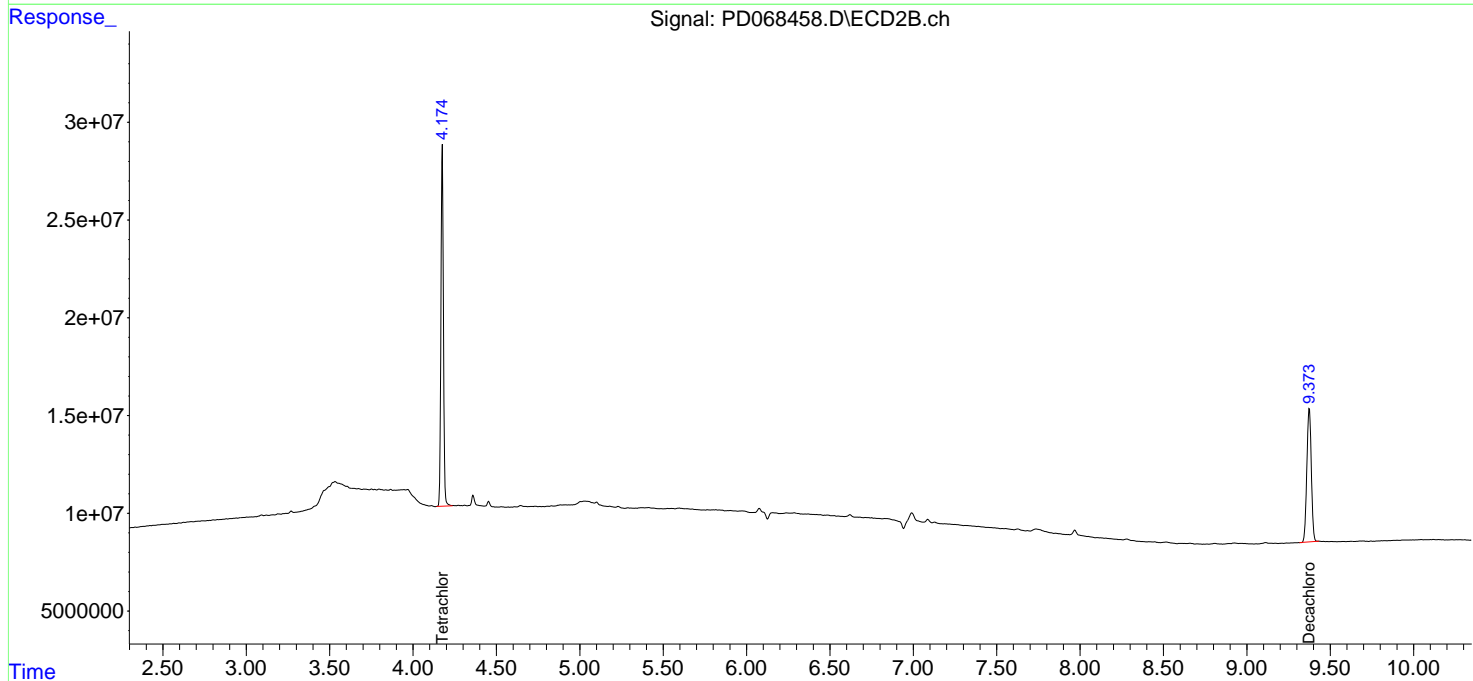
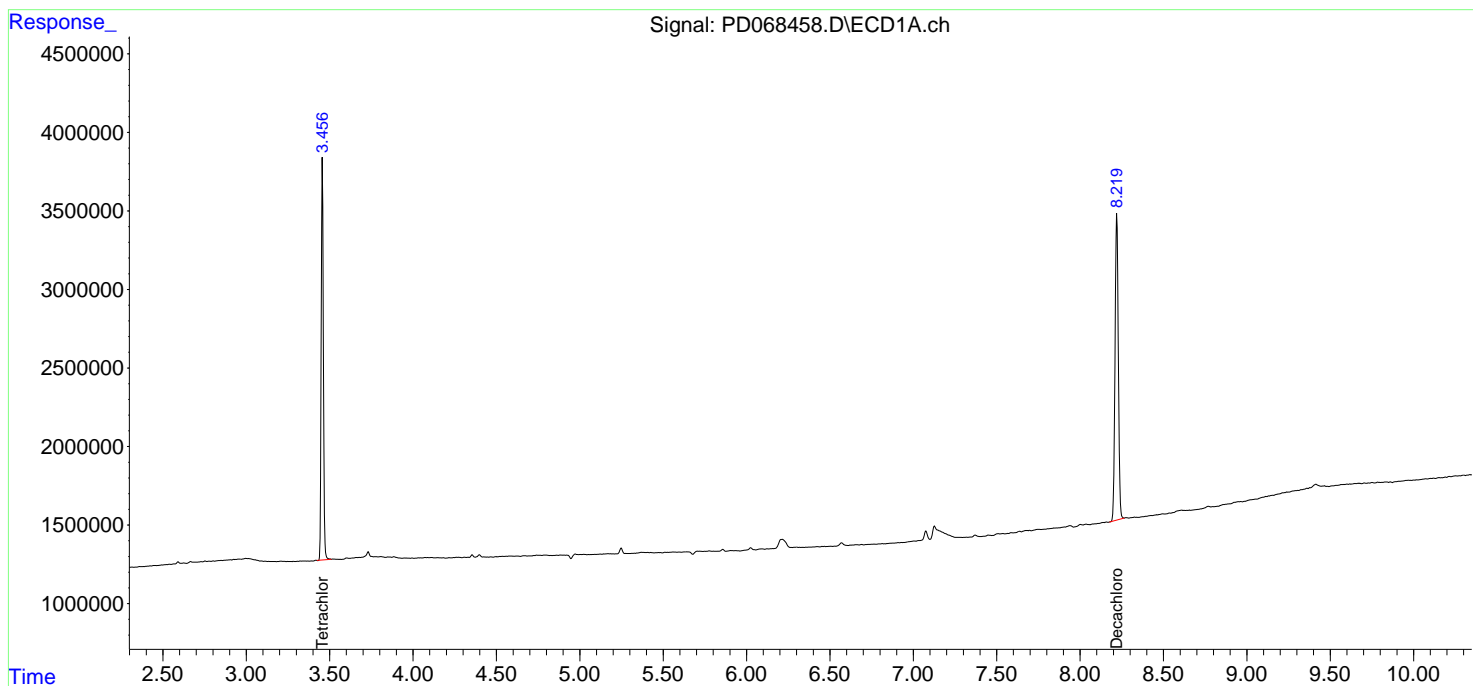
(f)=RT Delta > 1/2 Window (#)=Amounts differ by > 25% (m)=manual int.

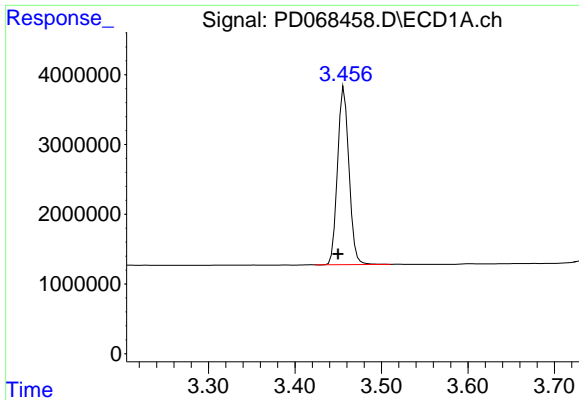
Data Path : Z:\pestpcbsrv\HPCHEM1\ECD_D\Data\PD031022\
 Data File : PD068458.D
 Signal(s) : Signal #1: ECD1A.ch Signal #2: ECD2B.ch
 Acq On : 10 Mar 2022 16:08
 Operator : AR\AJ
 Sample : PB143233BL
 Misc :
 ALS Vial : 11 Sample Multiplier: 1

Instrument :
 ECD_D
 ClientSampleId :
 PB143233BL

Integration File signal 1: autoint1.e
 Integration File signal 2: autoint2.e
 Quant Time: Mar 10 22:46:47 2022
 Quant Method : Z:\pestpcbsrv\HPCHEM1\ECD_D\Method\PD030122.M
 Quant Title : GC Extractables
 QLast Update : Tue Mar 01 06:48:49 2022
 Response via : Initial Calibration
 Integrator: ChemStation

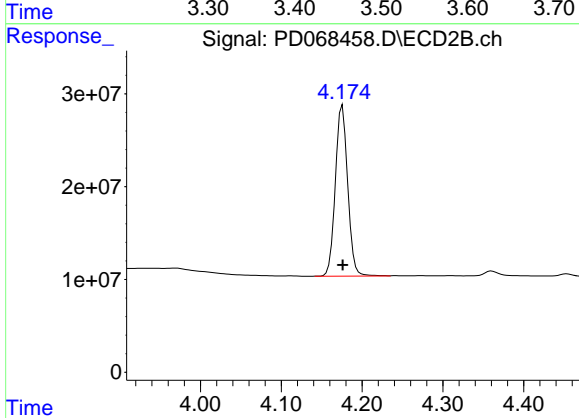
Volume Inj. : 2 µl
 Signal #1 Phase : ZB-MR2 Signal #2 Phase: ZB-MR1
 Signal #1 Info : 30M x 0.32mm x 0.2 Signal #2 Info : 30M x 0.32mm x 0.50µm



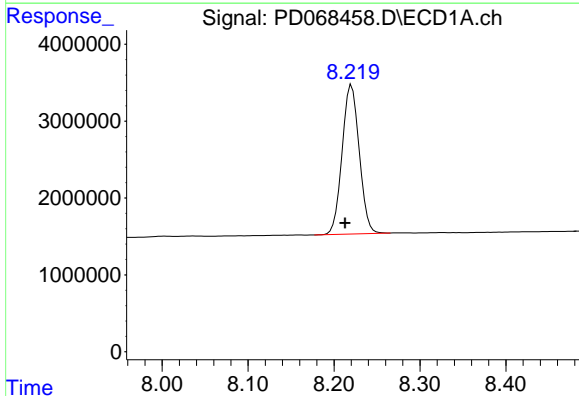


#1 Tetrachloro-m-xylene
 R.T.: 3.457 min
 Delta R.T.: 0.007 min
 Response: 23234987
 Conc: 19.82 ng/ml

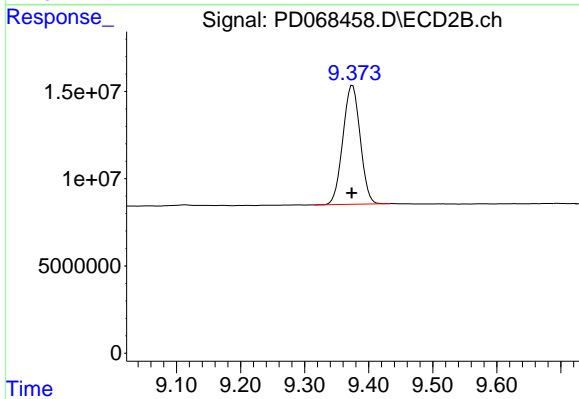
Instrument :
 ECD_D
 ClientSampleId :
 PB143233BL



#1 Tetrachloro-m-xylene
 R.T.: 4.176 min
 Delta R.T.: 0.000 min
 Response: 195086965
 Conc: 20.33 ng/ml



#28 Decachlorobiphenyl
 R.T.: 8.220 min
 Delta R.T.: 0.008 min
 Response: 26883671
 Conc: 23.10 ng/ml



#28 Decachlorobiphenyl
 R.T.: 9.375 min
 Delta R.T.: 0.001 min
 Response: 127686360
 Conc: 21.54 ng/ml