

Data Path : Z:\pestpcbsrv\HPCHEM1\ECD_D\Data\PD031022\
 Data File : PD068467.D
 Signal(s) : Signal #1: ECD1A.ch Signal #2: ECD2B.ch
 Acq On : 10 Mar 2022 18:15
 Operator : AR\AJ
 Sample : PEM
 Misc :
 ALS Vial : 3 Sample Multiplier: 1

Instrument :
 ECD_D
ClientSampleId :
 PEM

Manual Integrations
APPROVED

Reviewed By :Abdul Mirza 03/11/2022
 Supervised By :Ankita Jodhani 03/11/2022

Integration File signal 1: autoint1.e
 Integration File signal 2: autoint2.e
 Quant Time: Mar 10 22:51:57 2022
 Quant Method : Z:\pestpcbsrv\HPCHEM1\ECD_D\Method\PD030122.M
 Quant Title : GC Extractables
 QLast Update : Tue Mar 01 06:48:49 2022
 Response via : Initial Calibration
 Integrator: ChemStation

Volume Inj. : 2 µl
 Signal #1 Phase : ZB-MR2 Signal #2 Phase: ZB-MR1
 Signal #1 Info : 30M x 0.32mm x0.2 Signal #2 Info : 30M x 0.32mm x 0.50µm

Compound	RT#1	RT#2	Resp#1	Resp#2	ng/ml	ng/ml

System Monitoring Compounds						
1) SA Tetrachlo...	3.449	4.175	24861448	203.8E6	21.208	21.233
28) SA Decachlor...	8.210	9.371	26737753	126.1E6	22.976	21.268
Target Compounds						
2) A alpha-BHC	3.889	4.571	17393065	149.4E6	10.136	10.885
3) MA gamma-BHC...	4.172	4.862	16337282	136.8E6	10.259	11.029
6) B beta-BHC	4.422	5.025	8345577	64117238	11.894	11.862
12) B 4,4'-DDE	5.615	6.551	797469	5558346	0.585	0.569
14) MA Endrin	6.004	6.932	67547261	388.8E6	54.679	50.550
16) A 4,4'-DDD	6.131	7.042	3260645	24525781	2.749	3.116
17) MA 4,4'-DDT	6.372	7.345	128.2E6	676.8E6	116.230	95.656
18) B Endrin al...	6.446	7.260	1592898	10732722	1.738m	1.784
20) A Methoxychlor	6.923	7.798	166.8E6	782.1E6	256.983	225.087
21) B Endrin ke...	7.153	7.961	3079376	19636563	2.092	2.339

(f)=RT Delta > 1/2 Window (#)=Amounts differ by > 25% (m)=manual int.

Data Path : Z:\pestpcbsrv\HPCHEM1\ECD_D\Data\PD031022\
 Data File : PD068467.D
 Signal(s) : Signal #1: ECD1A.ch Signal #2: ECD2B.ch
 Acq On : 10 Mar 2022 18:15
 Operator : AR\AJ
 Sample : PEM
 Misc :
 ALS Vial : 3 Sample Multiplier: 1

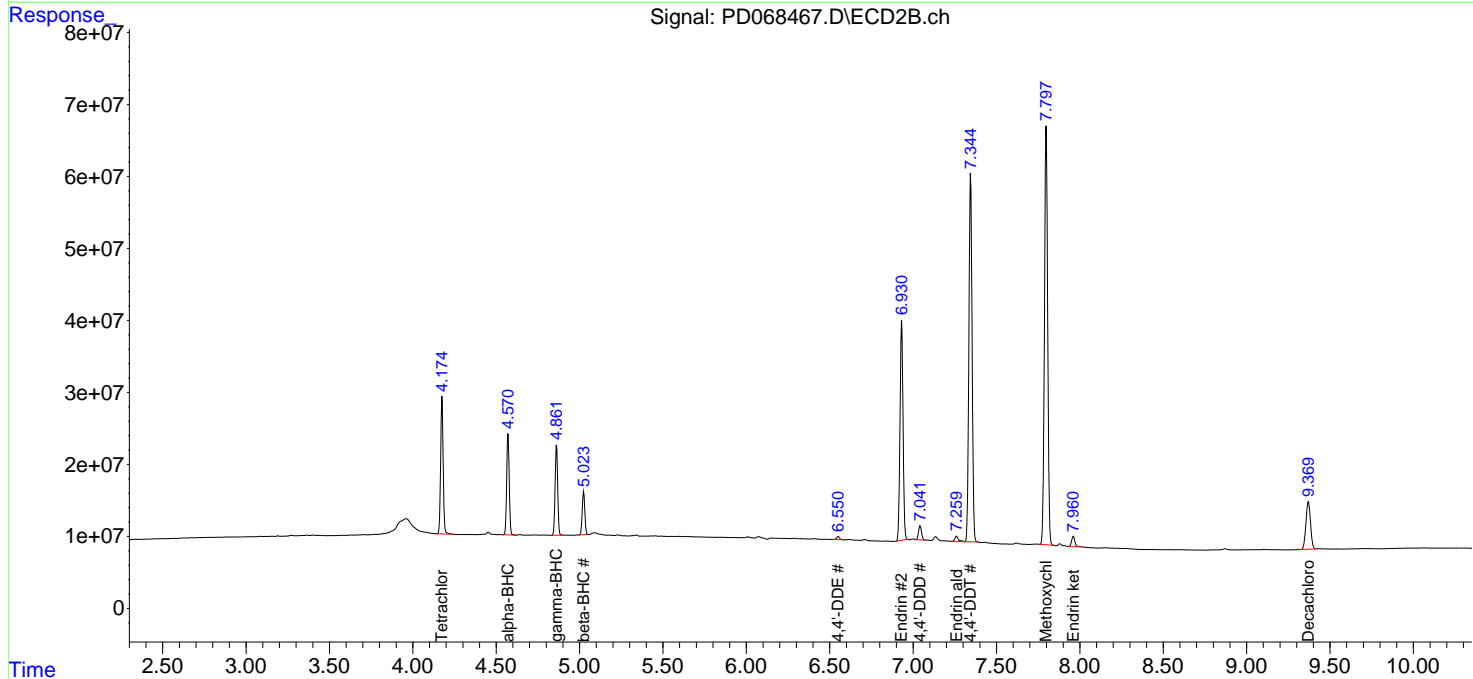
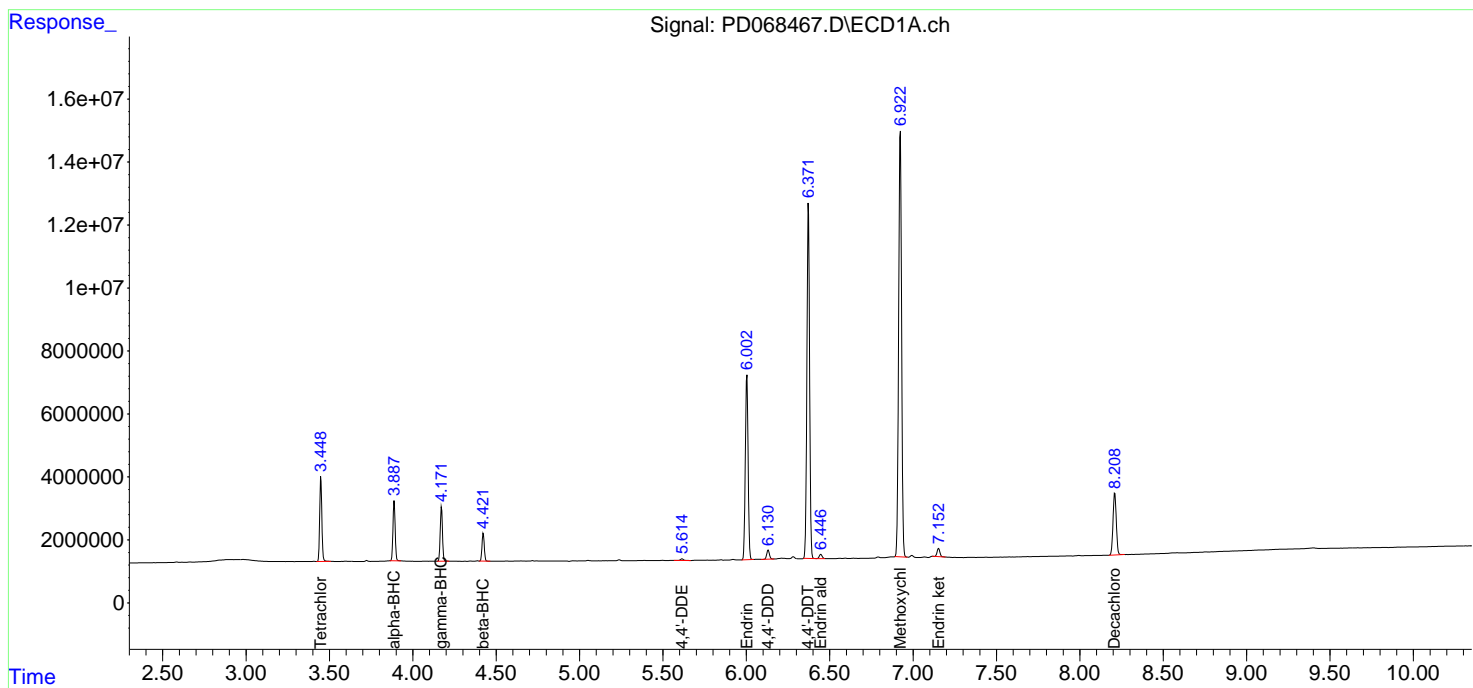
Instrument :
 ECD_D
ClientSampleId :
 PEM

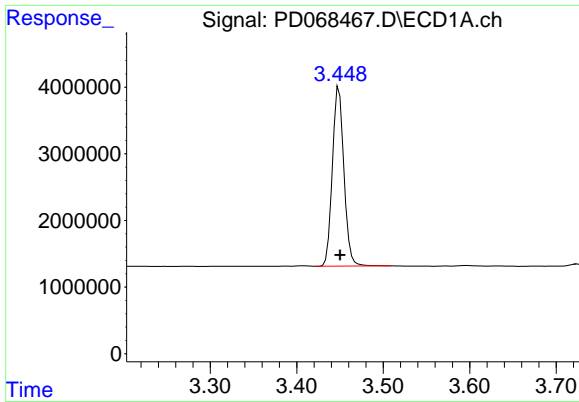
Manual Integrations
APPROVED

Reviewed By :Abdul Mirza 03/11/2022
 Supervised By :Ankita Jodhani 03/11/2022

Integration File signal 1: autoint1.e
 Integration File signal 2: autoint2.e
 Quant Time: Mar 10 22:51:57 2022
 Quant Method : Z:\pestpcbsrv\HPCHEM1\ECD_D\Method\PD030122.M
 Quant Title : GC Extractables
 QLast Update : Tue Mar 01 06:48:49 2022
 Response via : Initial Calibration
 Integrator: ChemStation

Volume Inj. : 2 µl
 Signal #1 Phase : ZB-MR2 Signal #2 Phase: ZB-MR1
 Signal #1 Info : 30M x 0.32mm x0.2 Signal #2 Info : 30M x 0.32mm x 0.50µm





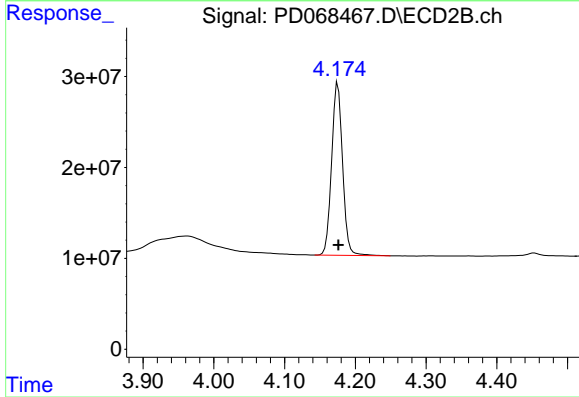
#1 Tetrachloro-m-xylene

R.T.: 3.449 min
 Delta R.T.: 0.000 min
 Response: 24861448
 Conc: 21.21 ng/ml

Instrument :
 ECD_D
 ClientSampleId :
 PEM

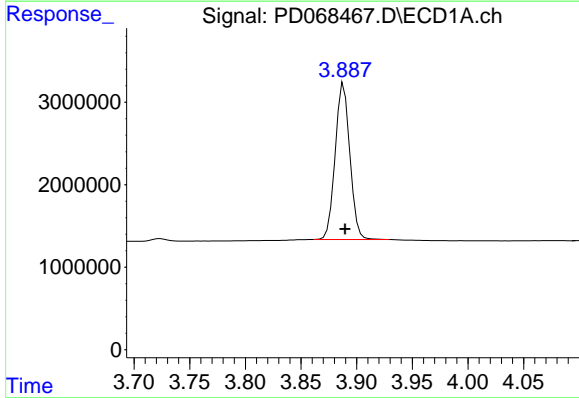
Manual Integrations
 APPROVED

Reviewed By :Abdul Mirza 03/11/2022
 Supervised By :Ankita Jodhani 03/11/2022



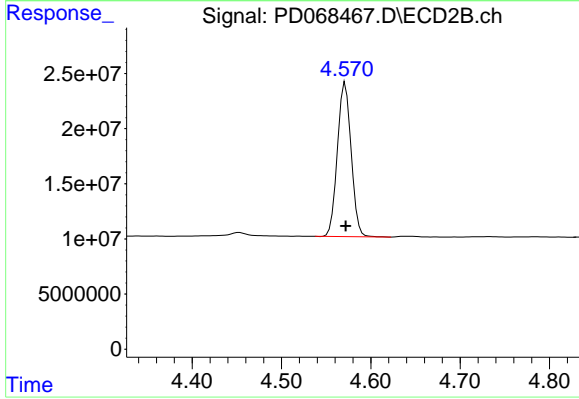
#1 Tetrachloro-m-xylene

R.T.: 4.175 min
 Delta R.T.: 0.000 min
 Response: 203799205
 Conc: 21.23 ng/ml



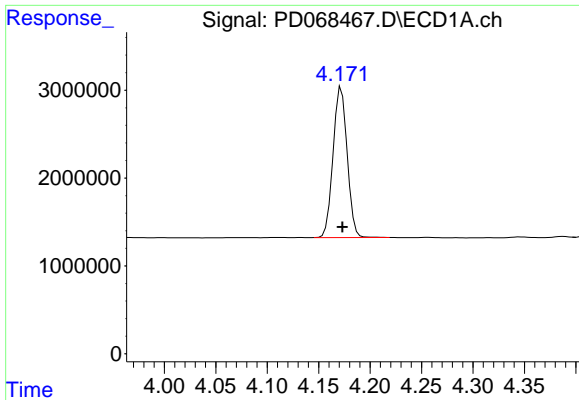
#2 alpha-BHC

R.T.: 3.889 min
 Delta R.T.: -0.001 min
 Response: 17393065
 Conc: 10.14 ng/ml



#2 alpha-BHC

R.T.: 4.571 min
 Delta R.T.: 0.000 min
 Response: 149357450
 Conc: 10.88 ng/ml

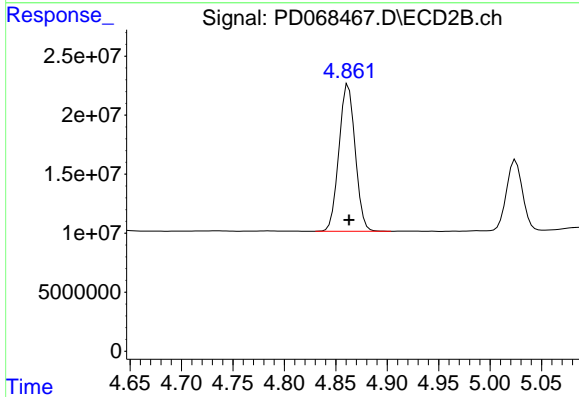


#3 gamma-BHC (Lindane)
 R.T.: 4.172 min
 Delta R.T.: -0.001 min
 Response: 16337282
 Conc: 10.26 ng/ml

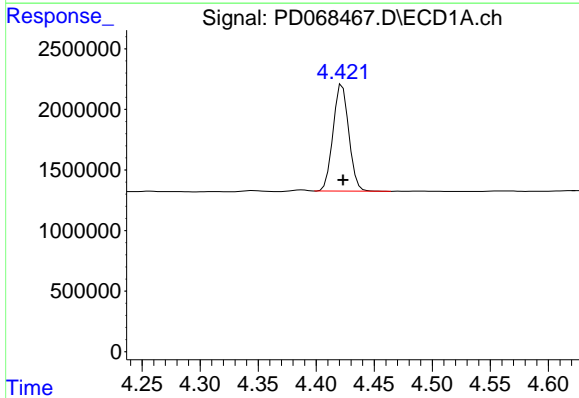
Instrument :
 ECD_D
 ClientSampleId :
 PEM

Manual Integrations
 APPROVED

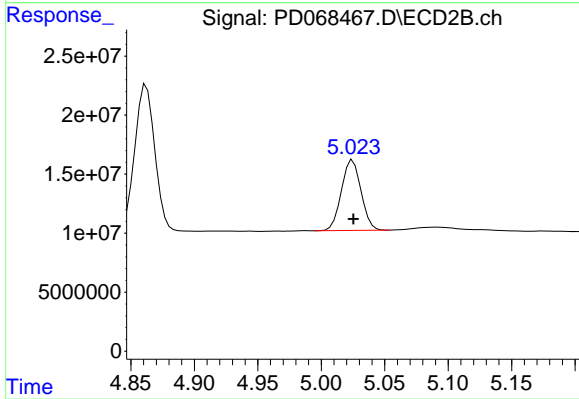
Reviewed By :Abdul Mirza 03/11/2022
 Supervised By :Ankita Jodhani 03/11/2022



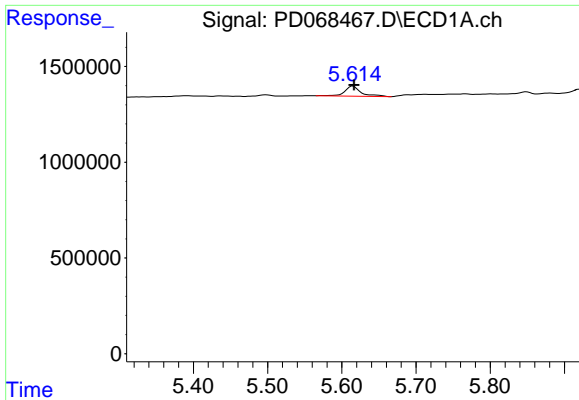
#3 gamma-BHC (Lindane)
 R.T.: 4.862 min
 Delta R.T.: 0.000 min
 Response: 136752345
 Conc: 11.03 ng/ml



#6 beta-BHC
 R.T.: 4.422 min
 Delta R.T.: 0.000 min
 Response: 8345577
 Conc: 11.89 ng/ml



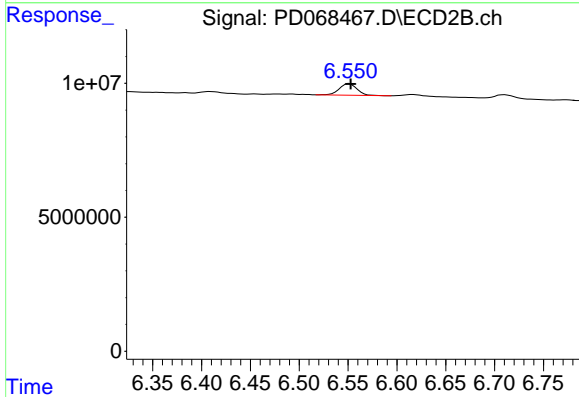
#6 beta-BHC
 R.T.: 5.025 min
 Delta R.T.: 0.000 min
 Response: 64117238
 Conc: 11.86 ng/ml



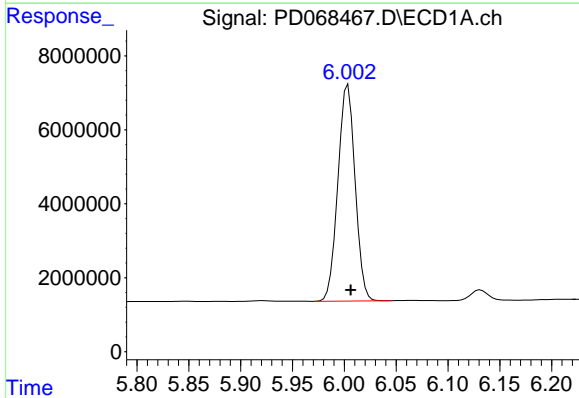
#12 4,4'-DDE
 R.T.: 5.615 min
 Delta R.T.: -0.001 min
 Response: 797469
 Conc: 0.58 ng/ml

Instrument : ECD_D
 ClientSampleId : PEM

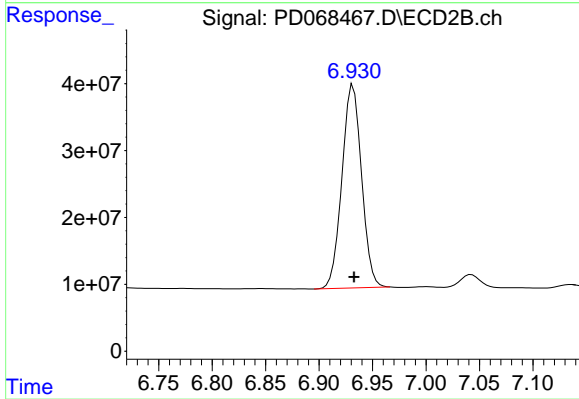
Manual Integrations
APPROVED
 Reviewed By :Abdul Mirza 03/11/2022
 Supervised By :Ankita Jodhani 03/11/2022



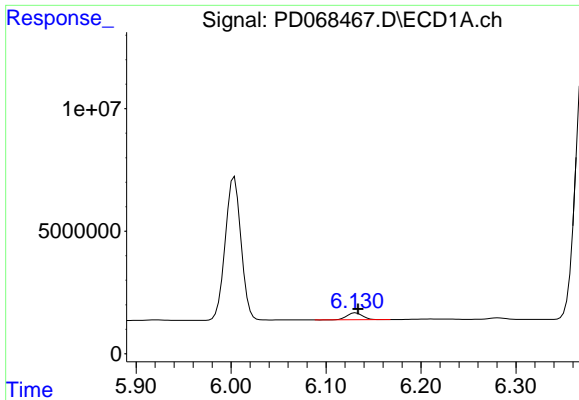
#12 4,4'-DDE
 R.T.: 6.551 min
 Delta R.T.: -0.002 min
 Response: 5558346
 Conc: 0.57 ng/ml



#14 Endrin
 R.T.: 6.004 min
 Delta R.T.: -0.002 min
 Response: 67547261
 Conc: 54.68 ng/ml



#14 Endrin
 R.T.: 6.932 min
 Delta R.T.: 0.000 min
 Response: 388758512
 Conc: 50.55 ng/ml



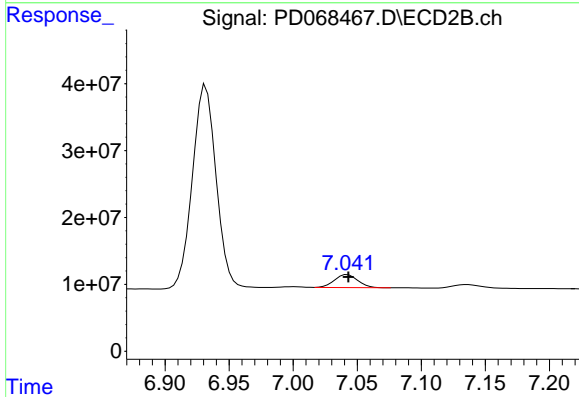
#16 4,4'-DDD

R.T.: 6.131 min
 Delta R.T.: -0.002 min
 Response: 3260645
 Conc: 2.75 ng/ml

Instrument : ECD_D
 ClientSampleId : PEM

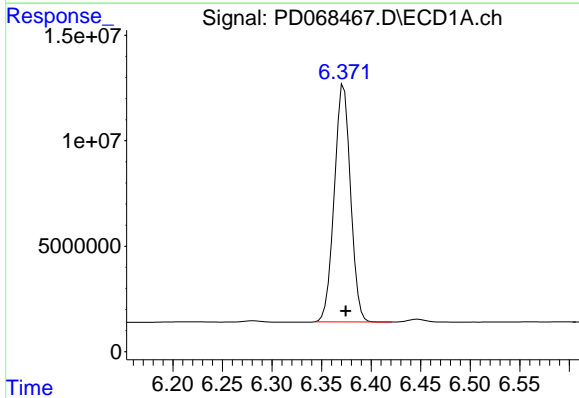
Manual Integrations
 APPROVED

Reviewed By :Abdul Mirza 03/11/2022
 Supervised By :Ankita Jodhani 03/11/2022



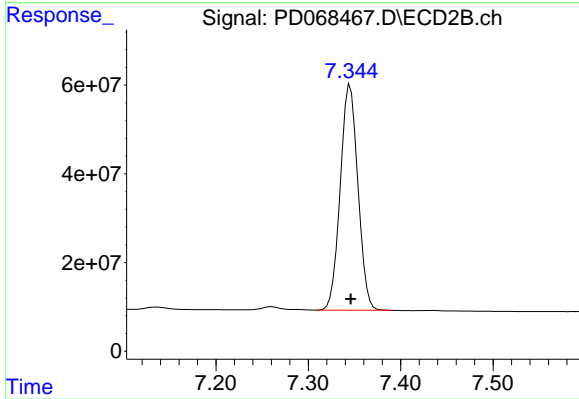
#16 4,4'-DDD

R.T.: 7.042 min
 Delta R.T.: 0.000 min
 Response: 24525781
 Conc: 3.12 ng/ml



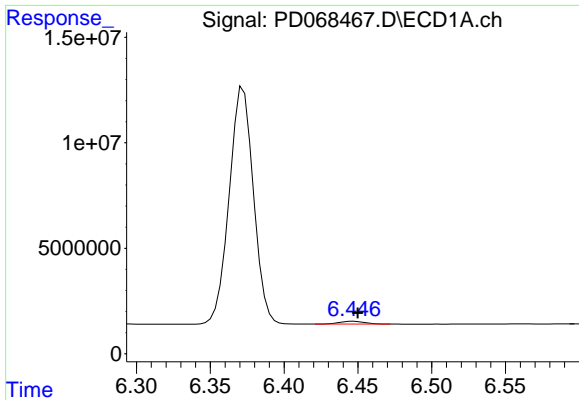
#17 4,4'-DDT

R.T.: 6.372 min
 Delta R.T.: -0.002 min
 Response: 128175389
 Conc: 116.23 ng/ml



#17 4,4'-DDT

R.T.: 7.345 min
 Delta R.T.: 0.000 min
 Response: 676812922
 Conc: 95.66 ng/ml

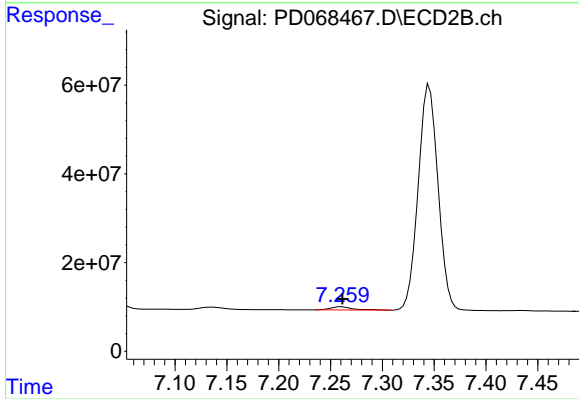


#18 Endrin aldehyde
 R.T.: 6.446 min
 Delta R.T.: -0.004 min
 Response: 1592898
 Conc: 1.74 ng/ml

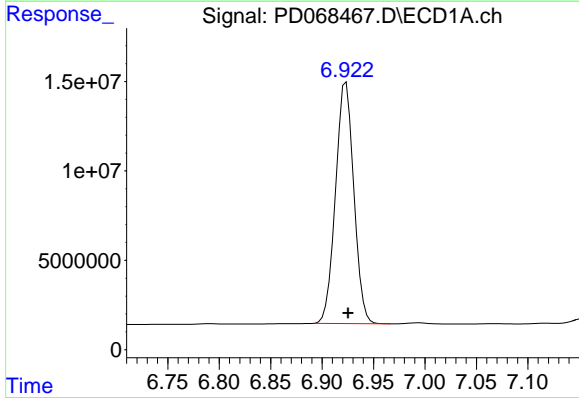
Instrument :
 ECD_D
 ClientSampleId :
 PEM

Manual Integrations
 APPROVED

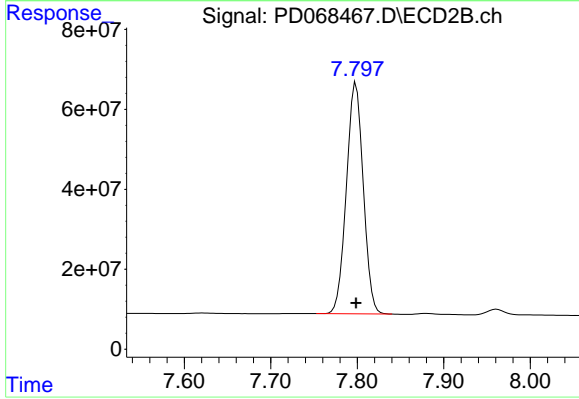
Reviewed By :Abdul Mirza 03/11/2022
 Supervised By :Ankita Jodhani 03/11/2022



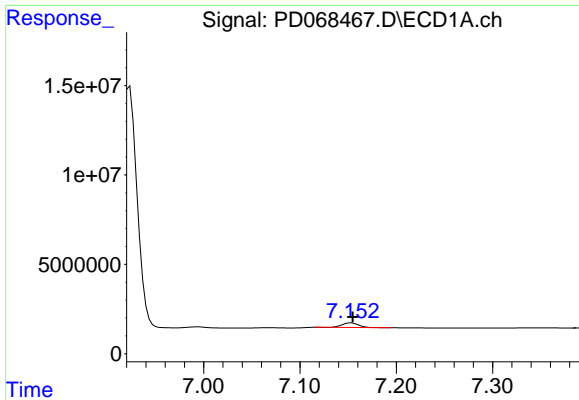
#18 Endrin aldehyde
 R.T.: 7.260 min
 Delta R.T.: -0.001 min
 Response: 10732722
 Conc: 1.78 ng/ml



#20 Methoxychlor
 R.T.: 6.923 min
 Delta R.T.: -0.002 min
 Response: 166755430
 Conc: 256.98 ng/ml



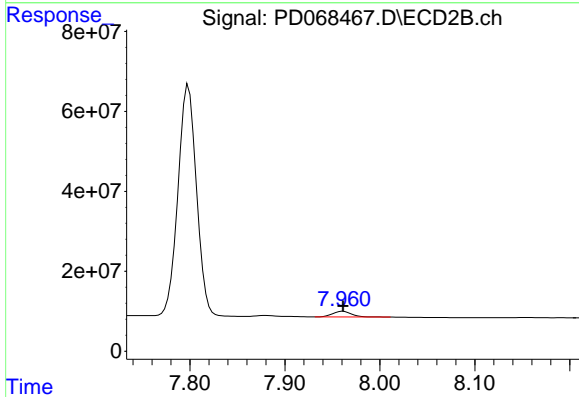
#20 Methoxychlor
 R.T.: 7.798 min
 Delta R.T.: 0.000 min
 Response: 782052147
 Conc: 225.09 ng/ml



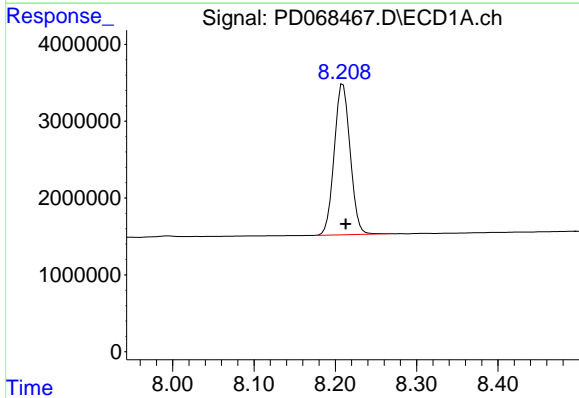
#21 Endrin ketone
 R.T.: 7.153 min
 Delta R.T.: -0.001 min
 Response: 3079376
 Conc: 2.09 ng/ml

Instrument : ECD_D
 ClientSampleId : PEM

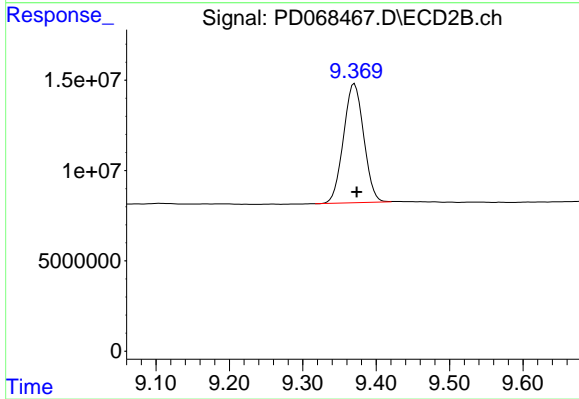
Manual Integrations
APPROVED
 Reviewed By :Abdul Mirza 03/11/2022
 Supervised By :Ankita Jodhani 03/11/2022



#21 Endrin ketone
 R.T.: 7.961 min
 Delta R.T.: 0.000 min
 Response: 19636563
 Conc: 2.34 ng/ml



#28 Decachlorobiphenyl
 R.T.: 8.210 min
 Delta R.T.: -0.003 min
 Response: 26737753
 Conc: 22.98 ng/ml



#28 Decachlorobiphenyl
 R.T.: 9.371 min
 Delta R.T.: -0.003 min
 Response: 126093388
 Conc: 21.27 ng/ml