

Data Path : Z:\pestpcbsrv\HPCHEM1\ECD\_D\Data\PD031119\  
 Data File : PD051751.D  
 Signal(s) : Signal #1: ECD1A.CH Signal #2: ECD2B.CH  
 Acq On : 11 Mar 2019 21:23  
 Operator : AJ\SJ  
 Sample : K1796-17  
 Misc :  
 ALS Vial : 48 Sample Multiplier: 1

Instrument :  
 ECD\_D  
 ClientSampleId :  
 BF5Q9

Integration File signal 1: autoint1.e  
 Integration File signal 2: autoint2.e  
 Quant Time: Mar 12 07:04:06 2019  
 Quant Method : Z:\pestpcbsrv\HPCHEM1\ECD\_D\Method\PD022219CLP.M  
 Quant Title : GC Extractables  
 QLast Update : Fri Feb 22 04:35:08 2019  
 Response via : Initial Calibration  
 Integrator: ChemStation 6890 Scale Mode: Large solvent peaks clipped

Volume Inj. : 1 µl  
 Signal #1 Phase : ZB-MR2 Signal #2 Phase: ZB-MR1  
 Signal #1 Info : 30M x 0.32mm x0.2 Signal #2 Info : 30M x 0.32mm x 0.50µm

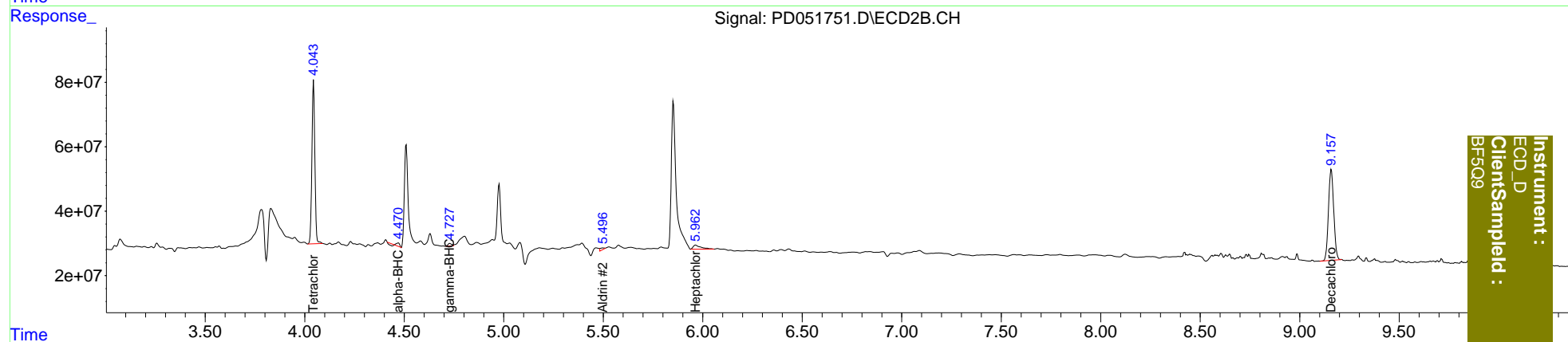
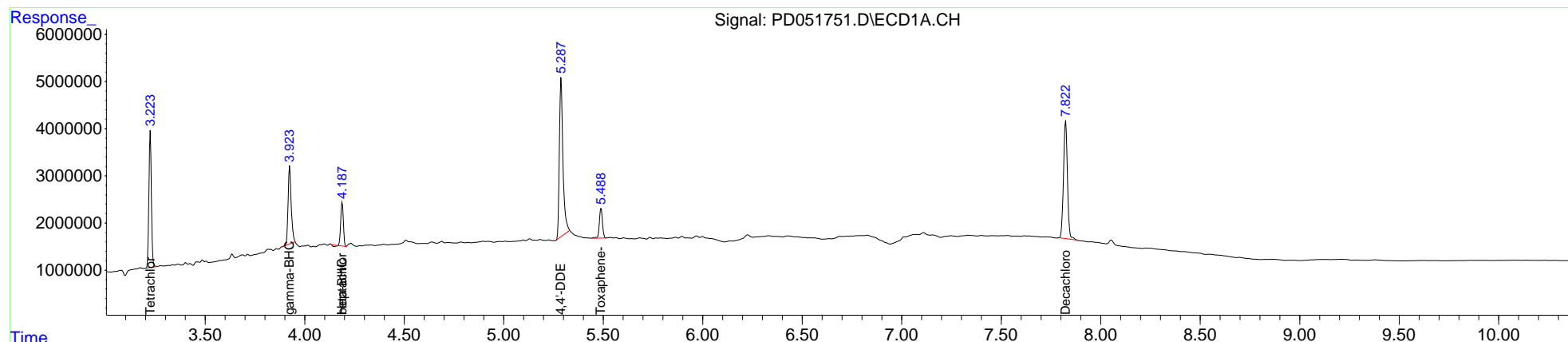
Compound	RT#1	RT#2	Resp#1	Resp#2	ng/ml	ng/ml
-----						
System Monitoring Compounds						
1) SA Tetrachlo...	3.224	4.044	25571395	526.1E6	17.795	17.028
27) SA Decachlor...	7.824	9.158	34163204	520.7E6	28.407	27.465
Target Compounds						
2) A alpha-BHC	0.000	4.471f	0	7161536	N.D.	0.153
3) MA gamma-BHC...	3.924	4.729	18059688	10691938	8.580	0.250 #
4) MA Heptachlor	4.188	0.000	8203552	0	3.772	N.D. #
5) MB Aldrin	0.000	5.499f	0	8357968	N.D.	0.211
6) B beta-BHC	4.188f	4.865f	8203552	1259596	8.580	<MDL #
8) B Heptachlo...	0.000	5.964	0	34466710	N.D.	0.963
12) B 4,4'-DDE	5.288	0.000	42478029	0	19.744	N.D. #
22) Toxaphene-1	5.489	0.000	6800186	0	498.686	N.D. #
-----						

(f)=RT Delta > 1/2 Window (#)=Amounts differ by > 25% (m)=manual int.

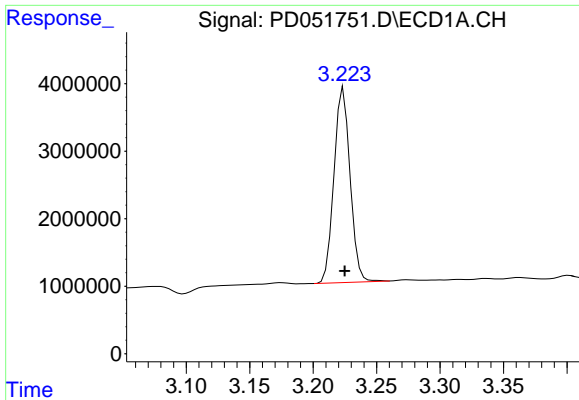
Data Path : Z:\pestpcbsrv\HPCHEM1\ECD\_D\Data\PD031119\  
 Data File : PD051751.D  
 Signal(s) : Signal #1: ECD1A.CH Signal #2: ECD2B.CH  
 Acq On : 11 Mar 2019 21:23  
 Operator : AJ\SJ  
 Sample : K1796-17  
 Misc :  
 ALS Vial : 48 Sample Multiplier: 1

Integration File signal 1: autoint1.e  
 Integration File signal 2: autoint2.e  
 Quant Time: Mar 12 07:04:06 2019  
 Quant Method : Z:\pestpcbsrv\HPCHEM1\ECD\_D\Method\PD022219CLP.M  
 Quant Title : GC Extractables  
 QLast Update : Fri Feb 22 04:35:08 2019  
 Response via : Initial Calibration  
 Integrator: ChemStation 6890 Scale Mode: Large solvent peaks clipped

Volume Inj. : 1 µl  
 Signal #1 Phase : ZB-MR2 Signal #2 Phase: ZB-MR1  
 Signal #1 Info : 30M x 0.32mm x0.2 Signal #2 Info : 30M x 0.32mm x 0.50µm

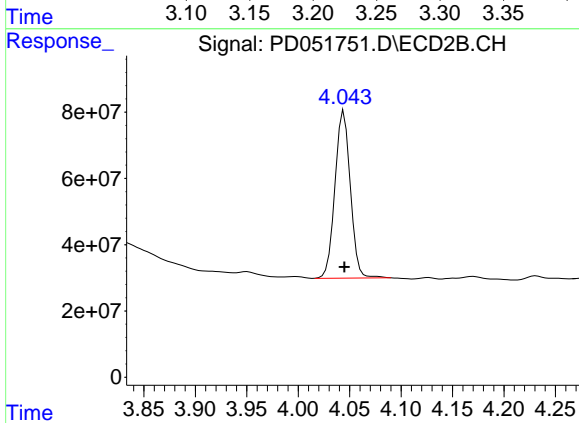


Instrument :  
 ECD\_D  
 ClientSampleId :  
 BF509

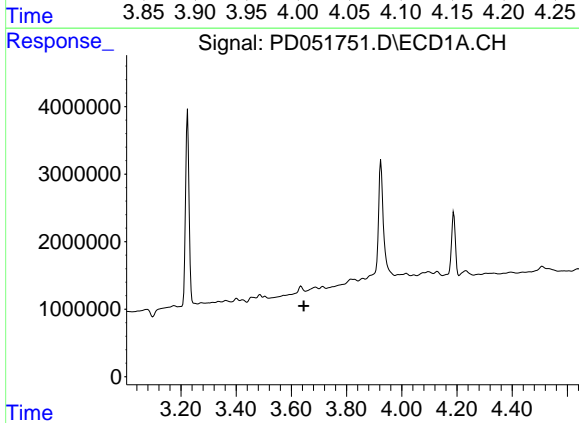


#1 Tetrachloro-m-xylene  
 R.T.: 3.224 min  
 Delta R.T.: -0.001 min  
 Response: 25571395  
 Conc: 17.79 ng/ml

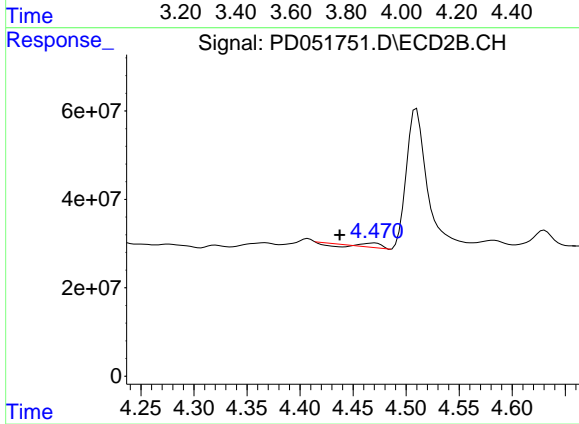
Instrument :  
 ECD\_D  
 ClientSampled :  
 BF5Q9



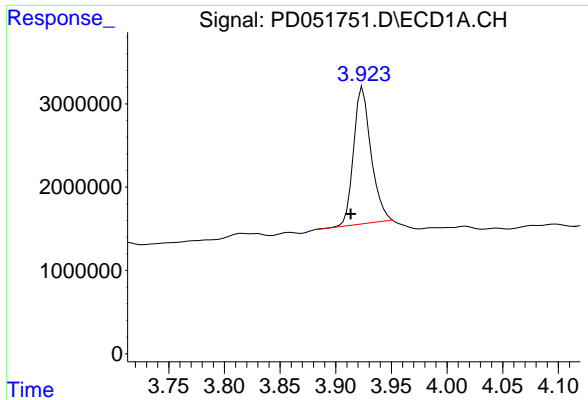
#1 Tetrachloro-m-xylene  
 R.T.: 4.044 min  
 Delta R.T.: 0.000 min  
 Response: 526089468  
 Conc: 17.03 ng/ml



#2 alpha-BHC  
 R.T.: 0.000 min  
 Exp R.T. : 3.645 min  
 Response: 0  
 Conc: N.D.

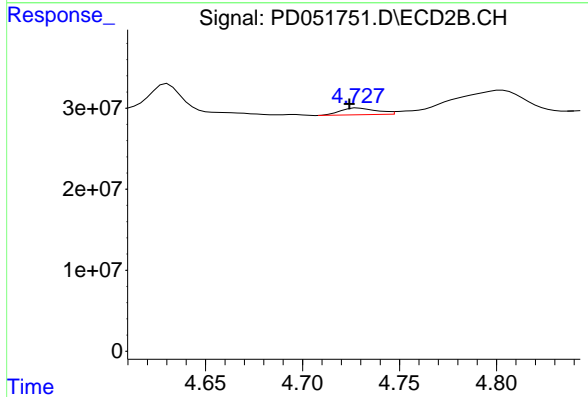


#2 alpha-BHC  
 R.T.: 4.471 min  
 Delta R.T.: 0.033 min  
 Response: 7161536  
 Conc: 0.15 ng/ml

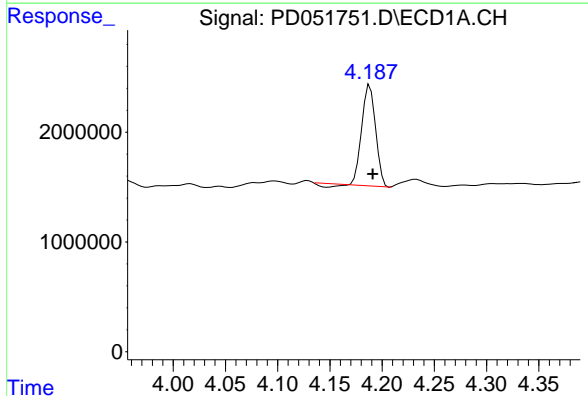


#3 gamma-BHC (Lindane)  
 R.T.: 3.924 min  
 Delta R.T.: 0.011 min  
 Response: 18059688  
 Conc: 8.58 ng/ml

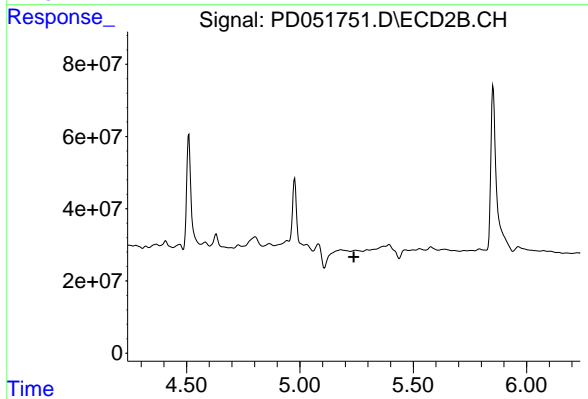
Instrument :  
 ECD\_D  
 ClientSampled :  
 BF5Q9



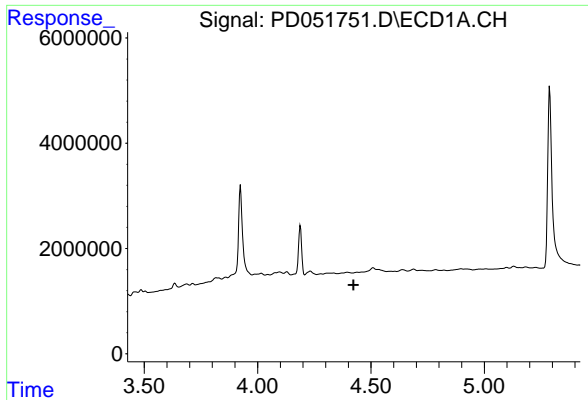
#3 gamma-BHC (Lindane)  
 R.T.: 4.729 min  
 Delta R.T.: 0.005 min  
 Response: 10691938  
 Conc: 0.25 ng/ml



#4 Heptachlor  
 R.T.: 4.188 min  
 Delta R.T.: -0.003 min  
 Response: 8203552  
 Conc: 3.77 ng/ml

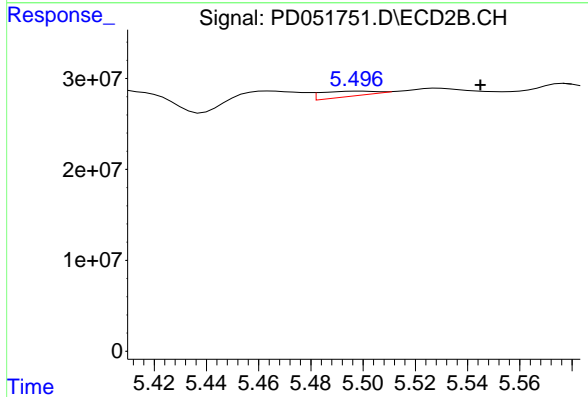


#4 Heptachlor  
 R.T.: 0.000 min  
 Exp R.T. : 5.238 min  
 Response: 0  
 Conc: N.D.

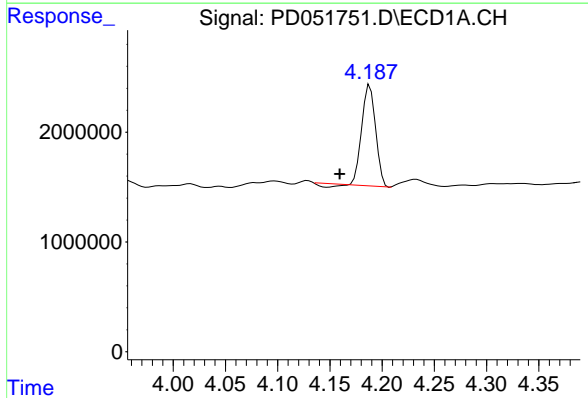


#5 Aldrin  
 R.T.: 0.000 min  
 Exp R.T.: 4.423 min  
 Response: 0  
 Conc: N.D.

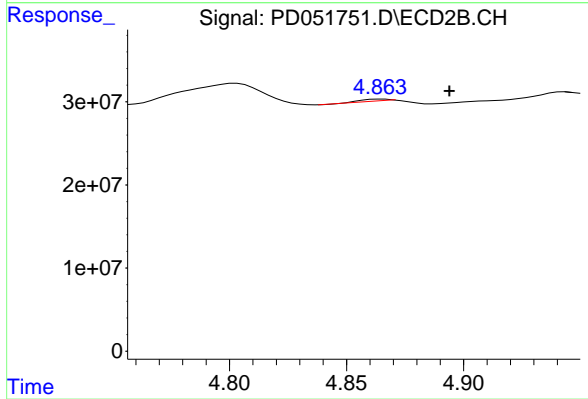
Instrument :  
 ECD\_D  
 ClientSampleId :  
 BF5Q9



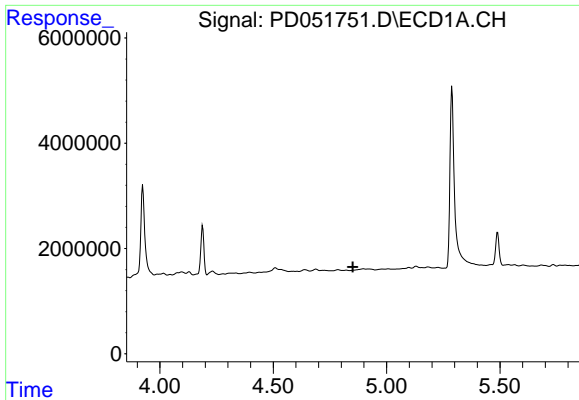
#5 Aldrin  
 R.T.: 5.499 min  
 Delta R.T.: -0.046 min  
 Response: 8357968  
 Conc: 0.21 ng/ml



#6 beta-BHC  
 R.T.: 4.188 min  
 Delta R.T.: 0.029 min  
 Response: 8203552  
 Conc: 8.58 ng/ml

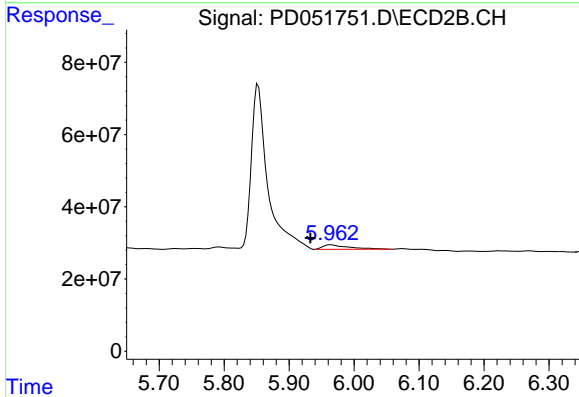


#6 beta-BHC  
 R.T.: 4.865 min  
 Delta R.T.: -0.029 min  
 Response: 1259596  
 Conc: N.D.

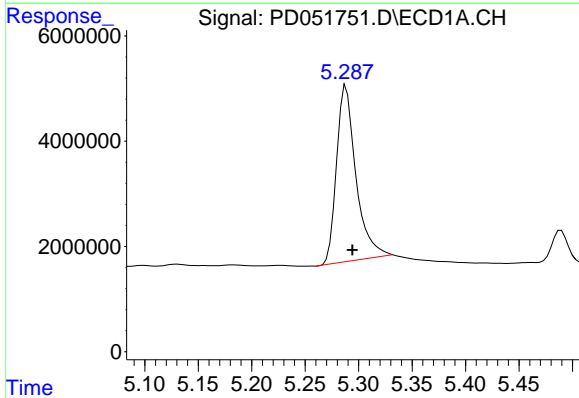


#8 Heptachlor epoxide  
 R.T.: 0.000 min  
 Exp R.T.: 4.851 min  
 Response: 0  
 Conc: N.D.

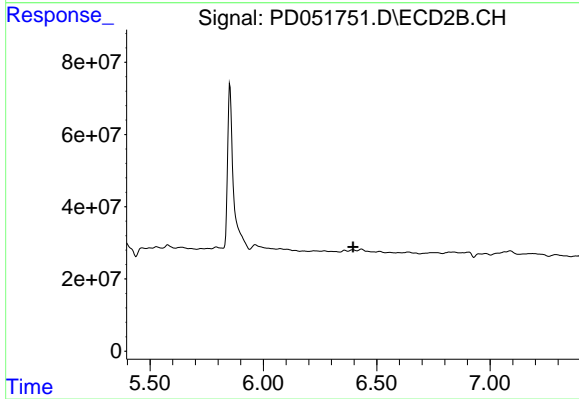
Instrument :  
 ECD\_D  
 ClientSampled :  
 BF5Q9



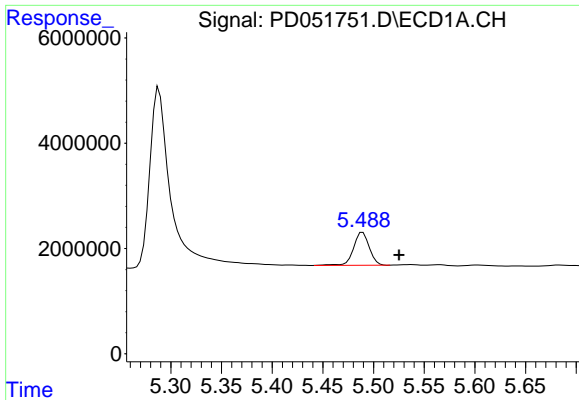
#8 Heptachlor epoxide  
 R.T.: 5.964 min  
 Delta R.T.: 0.031 min  
 Response: 34466710  
 Conc: 0.96 ng/ml



#12 4,4'-DDE  
 R.T.: 5.288 min  
 Delta R.T.: -0.006 min  
 Response: 42478029  
 Conc: 19.74 ng/ml

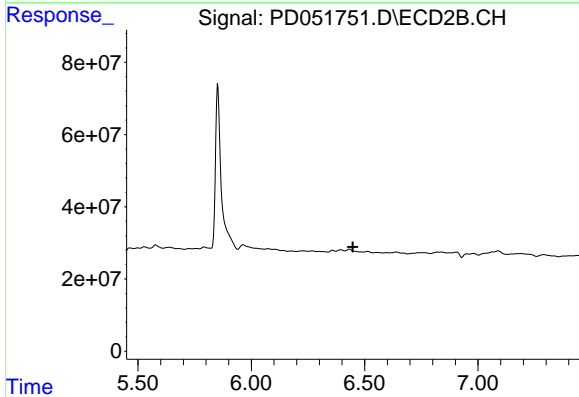


#12 4,4'-DDE  
 R.T.: 0.000 min  
 Exp R.T.: 6.396 min  
 Response: 0  
 Conc: N.D.

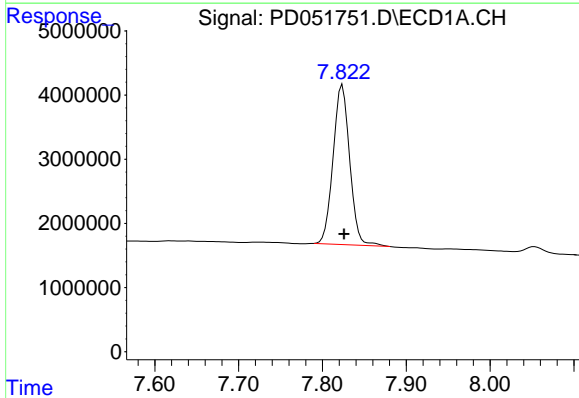


#22 Toxaphene-1  
 R.T.: 5.489 min  
 Delta R.T.: -0.036 min  
 Response: 6800186  
 Conc: 498.69 ng/ml

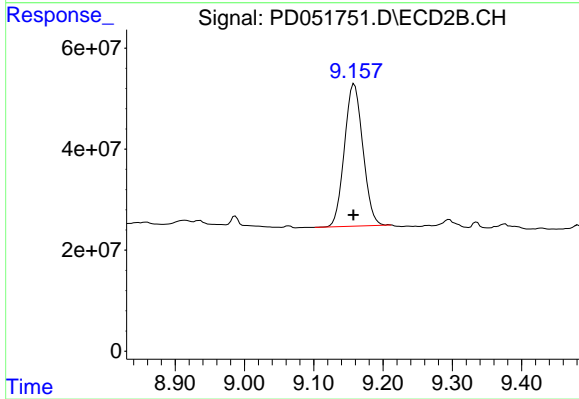
Instrument :  
 ECD\_D  
 ClientSampled :  
 BF5Q9



#22 Toxaphene-1  
 R.T.: 0.000 min  
 Exp R.T. : 6.448 min  
 Response: 0  
 Conc: N.D.



#27 Decachlorobiphenyl  
 R.T.: 7.824 min  
 Delta R.T.: -0.002 min  
 Response: 34163204  
 Conc: 28.41 ng/ml



#27 Decachlorobiphenyl  
 R.T.: 9.158 min  
 Delta R.T.: 0.001 min  
 Response: 520670605  
 Conc: 27.47 ng/ml