

Data Path : Z:\pestpcbsrv\HPCHEM1\ECD\_D\Data\PD031219\  
 Data File : PD051781.D  
 Signal(s) : Signal #1: ECD1A.CH Signal #2: ECD2B.CH  
 Acq On : 12 Mar 2019 14:57  
 Operator : AJ\SJ  
 Sample : K1657-04MSD  
 Misc :  
 ALS Vial : 14 Sample Multiplier: 1

Instrument :  
 ECD\_D  
 ClientSampleID :  
 DB648MSD

Integration File signal 1: autoint1.e  
 Integration File signal 2: autoint2.e  
 Quant Time: Mar 13 04:04:32 2019  
 Quant Method : Z:\pestpcbsrv\HPCHEM1\ECD\_D\Method\PD022219CLP.M  
 Quant Title : GC Extractables  
 QLast Update : Fri Feb 22 04:35:08 2019  
 Response via : Initial Calibration  
 Integrator: ChemStation 6890 Scale Mode: Large solvent peaks clipped

Volume Inj. : 1 µl  
 Signal #1 Phase : ZB-MR2 Signal #2 Phase: ZB-MR1  
 Signal #1 Info : 30M x 0.32mm x0.2 Signal #2 Info : 30M x 0.32mm x 0.50µm

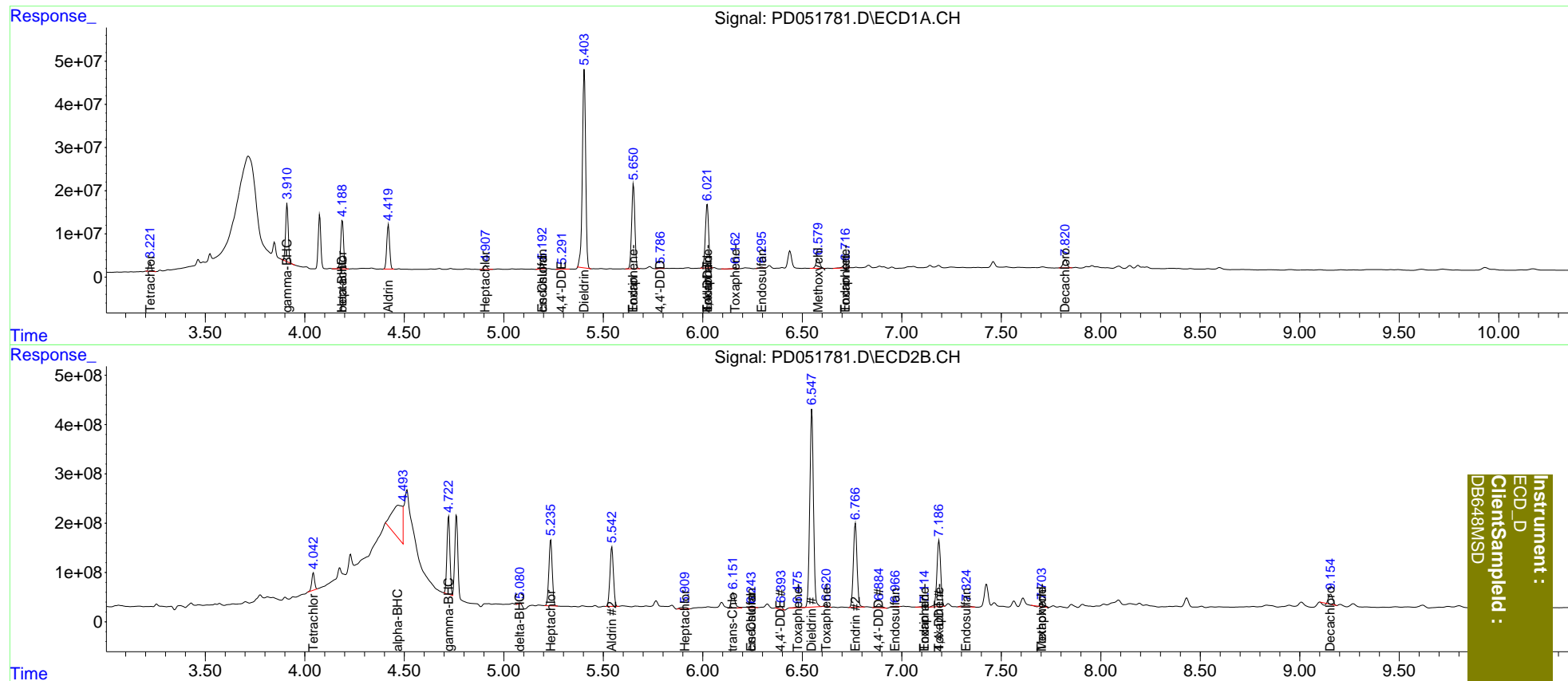
Compound	RT#1	RT#2	Resp#1	Resp#2	ng/ml	ng/ml
System Monitoring Compounds						
1) SA Tetrachlo...	3.223	4.043	19161658	348.4E6	13.334	11.277
27) SA Decachlor...	7.822	9.155	26090465	250.6E6	21.694	13.217 #
Target Compounds						
2) A alpha-BHC	0.000	4.470f	0	2378.3E6	N.D.	50.903
3) MA gamma-BHC...	3.911	4.723	119.2E6	1637.1E6	56.636	38.321 #
4) MA Heptachlor	4.189	5.236	110.7E6	1593.5E6	50.885	37.249 #
5) MB Aldrin	4.420	5.543	102.3E6	1471.7E6	47.640	37.183
6) B beta-BHC	4.189f	4.925f	110.7E6	-30378022	115.746	N.D. #
7) B delta-BHC	0.000	5.082f	0	12750131	N.D.	0.313
8) B Heptachlo...	4.909f	5.910	10580986	78330237	5.019	2.188 #
9) A Endosulfan I	5.193	6.244f	14004691	22214809	6.854	0.670 #
10) B trans-Chl...	0.000	6.153	0	407.7E6	N.D.	11.284
11) B cis-Chlor...	5.193f	6.244	14004691	22214809	6.552	0.642 #
12) B 4,4'-DDE	5.292	6.392	3640977	80440604	1.692	2.462 #
13) MA Dieldrin	5.405	6.548	529.5E6	5192.4E6	228.735	155.983 #
14) MA Endrin	5.652	6.767	217.6E6	2168.1E6	106.836	82.027
15) B Endosulfa...	0.000	6.970	0	20836543	N.D.	0.759
16) A 4,4'-DDD	5.788	6.886	2697060	125.7E6	1.533	4.801 #
17) MA 4,4'-DDT	6.023	7.187	174.1E6	1772.0E6	95.609	76.834
18) B Endrin al...	6.023f	7.115	174.1E6	32626532	106.175	1.452 #
19) B Endosulfa...	6.297	7.326	2950255	93817851	1.598	3.695 #
20) A Methoxychlor	6.580	7.704f	29679232	66403106	32.138	6.273 #
21) B Endrin ke...	6.718f	0.000	13286623	0	6.542	N.D. #
22) Toxaphene-1	0.000	6.476	0	26927230	N.D.	179.188
23) Toxaphene-2	5.652	6.620	217.6E6	49068532	9513.832	169.336 #
24) Toxaphene-3	6.023	7.115	174.1E6	32626532	4576.117	134.219 #
25) Toxaphene-4	6.164	7.187	2338480	1772.0E6	60.566	2638.655 #
26) Toxaphene-5	6.718	7.704	13286623	66403106	304.504	230.733

(f)=RT Delta > 1/2 Window (#)=Amounts differ by > 25% (m)=manual int.

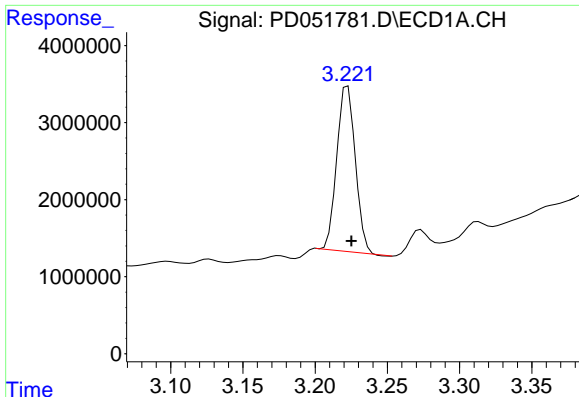
Data Path : Z:\pestpcbsrv\HPCHEM1\ECD\_D\Data\PD031219\  
 Data File : PD051781.D  
 Signal(s) : Signal #1: ECD1A.CH Signal #2: ECD2B.CH  
 Acq On : 12 Mar 2019 14:57  
 Operator : AJ\SJ  
 Sample : K1657-04MSD  
 Misc :  
 ALS Vial : 14 Sample Multiplier: 1

Integration File signal 1: autoint1.e  
 Integration File signal 2: autoint2.e  
 Quant Time: Mar 13 04:04:32 2019  
 Quant Method : Z:\pestpcbsrv\HPCHEM1\ECD\_D\Method\PD022219CLP.M  
 Quant Title : GC Extractables  
 QLast Update : Fri Feb 22 04:35:08 2019  
 Response via : Initial Calibration  
 Integrator: ChemStation 6890 Scale Mode: Large solvent peaks clipped

Volume Inj. : 1 µl  
 Signal #1 Phase : ZB-MR2 Signal #2 Phase: ZB-MR1  
 Signal #1 Info : 30M x 0.32mm x0.2 Signal #2 Info : 30M x 0.32mm x 0.50µm

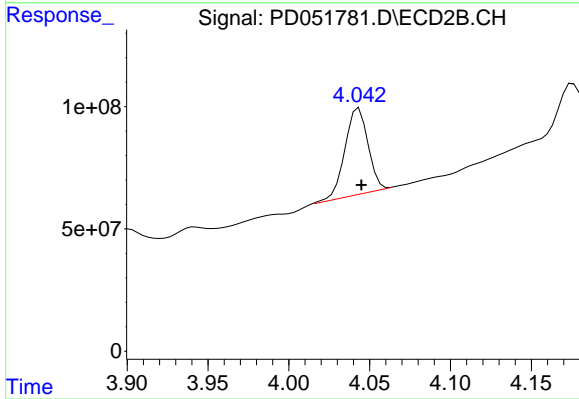


Instrument :  
 ECD\_D  
 ClientSampled :  
 DB648MSD

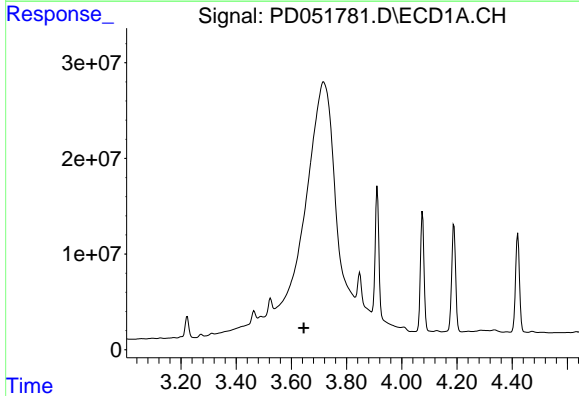


#1 Tetrachloro-m-xylene  
 R.T.: 3.223 min  
 Delta R.T.: -0.002 min  
 Response: 19161658  
 Conc: 13.33 ng/ml

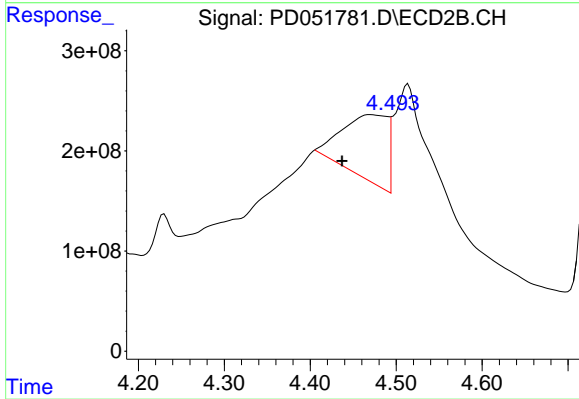
Instrument :  
 ECD\_D  
 ClientSampleId :  
 DB648MSD



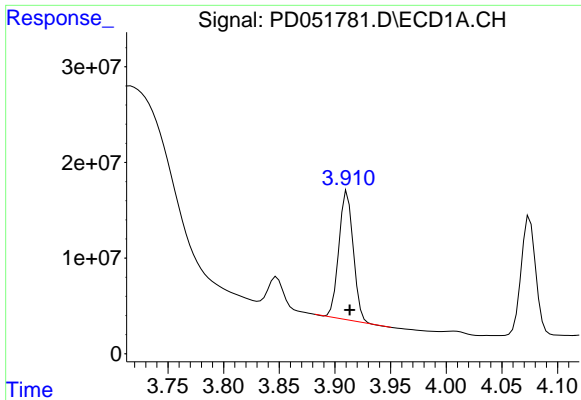
#1 Tetrachloro-m-xylene  
 R.T.: 4.043 min  
 Delta R.T.: -0.002 min  
 Response: 348407667  
 Conc: 11.28 ng/ml



#2 alpha-BHC  
 R.T.: 0.000 min  
 Exp R.T. : 3.645 min  
 Response: 0  
 Conc: N.D.



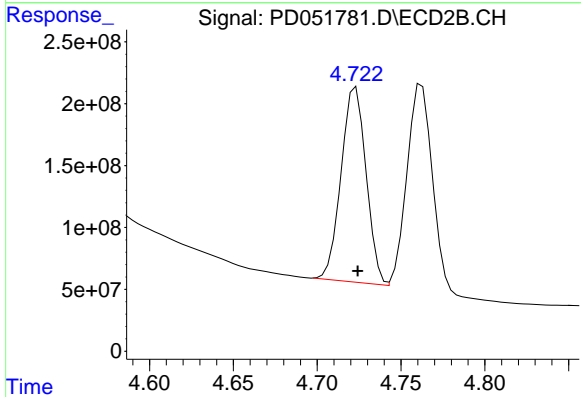
#2 alpha-BHC  
 R.T.: 4.470 min  
 Delta R.T.: 0.033 min  
 Response: 2378316927  
 Conc: 50.90 ng/ml



#3 gamma-BHC (Lindane)

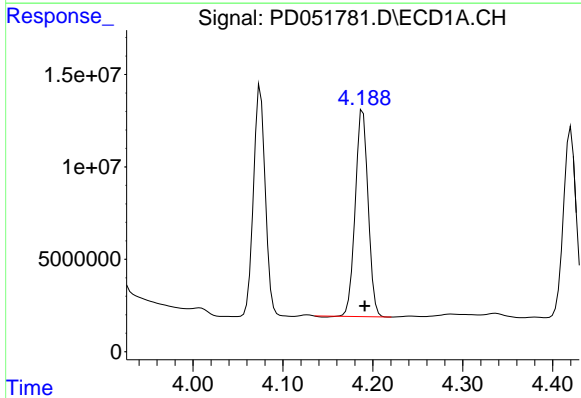
R.T.: 3.911 min  
Delta R.T.: -0.002 min  
Response: 119216567  
Conc: 56.64 ng/ml

Instrument :  
ECD\_D  
ClientSampled :  
DB648MSD



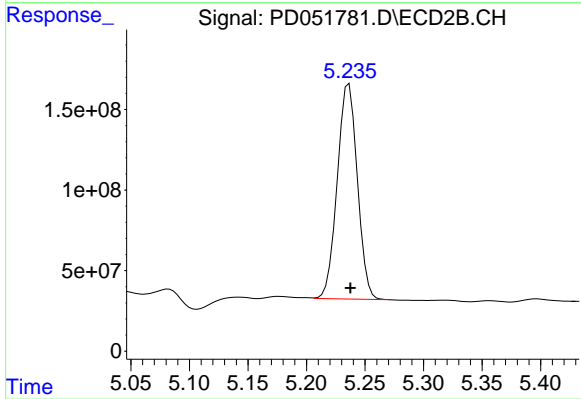
#3 gamma-BHC (Lindane)

R.T.: 4.723 min  
Delta R.T.: -0.001 min  
Response: 1637068081  
Conc: 38.32 ng/ml



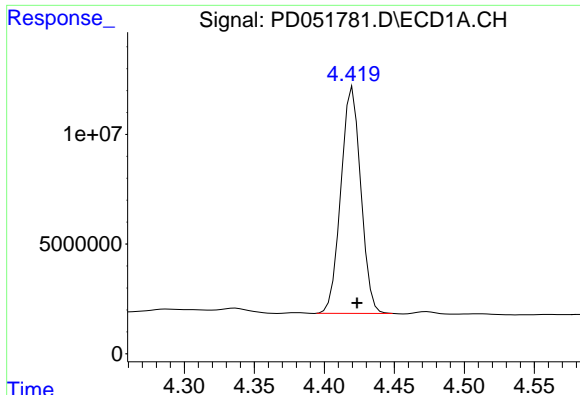
#4 Heptachlor

R.T.: 4.189 min  
Delta R.T.: -0.002 min  
Response: 110665901  
Conc: 50.88 ng/ml



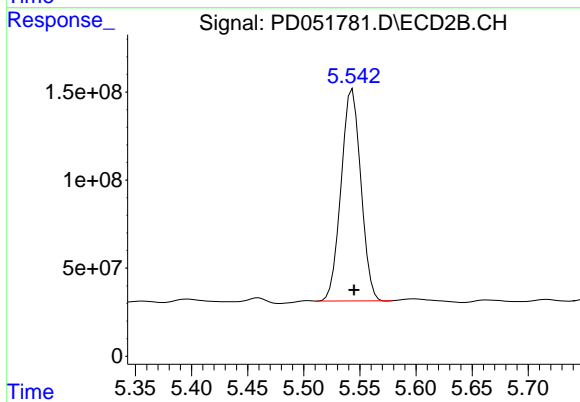
#4 Heptachlor

R.T.: 5.236 min  
Delta R.T.: -0.001 min  
Response: 1593466985  
Conc: 37.25 ng/ml

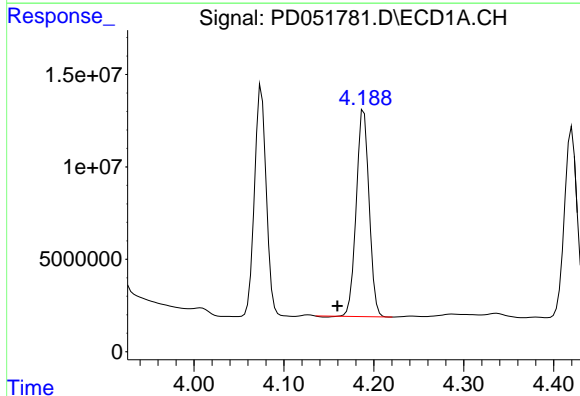


#5 Aldrin  
 R.T.: 4.420 min  
 Delta R.T.: -0.003 min  
 Response: 102269232  
 Conc: 47.64 ng/ml

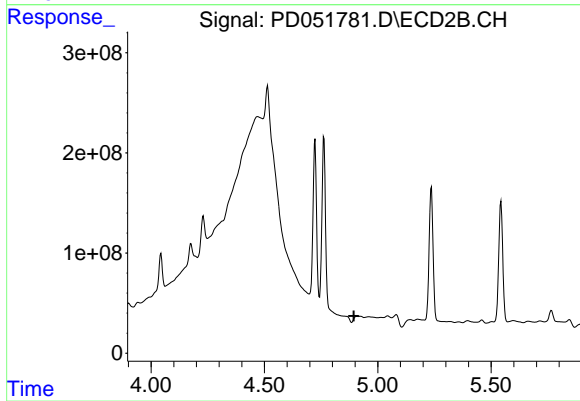
Instrument :  
 ECD\_D  
 ClientSampled :  
 DB648MSD



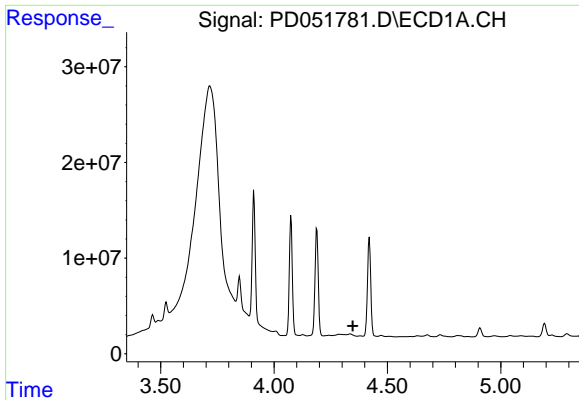
#5 Aldrin  
 R.T.: 5.543 min  
 Delta R.T.: -0.001 min  
 Response: 1471698058  
 Conc: 37.18 ng/ml



#6 beta-BHC  
 R.T.: 4.189 min  
 Delta R.T.: 0.029 min  
 Response: 110665901  
 Conc: 115.75 ng/ml



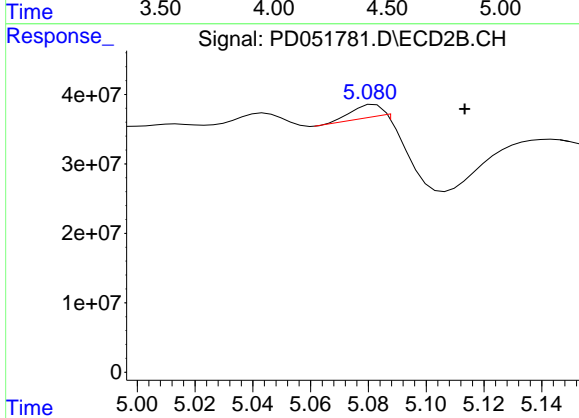
#6 beta-BHC  
 R.T.: 4.925 min  
 Delta R.T.: 0.031 min  
 Response: -30378022  
 Conc: N.D.



#7 delta-BHC

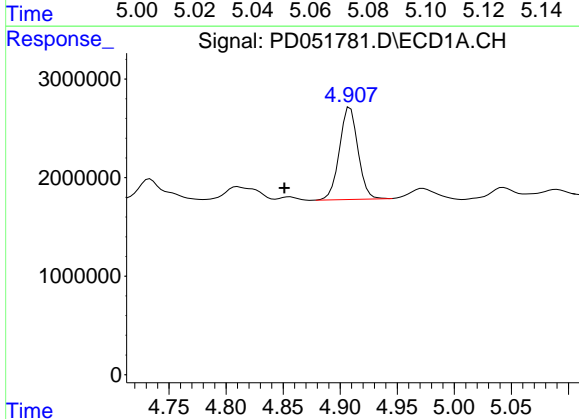
R.T.: 0.000 min  
 Exp R.T.: 4.348 min  
 Response: 0  
 Conc: N.D.

Instrument :  
 ECD\_D  
 ClientSampled :  
 DB648MSD



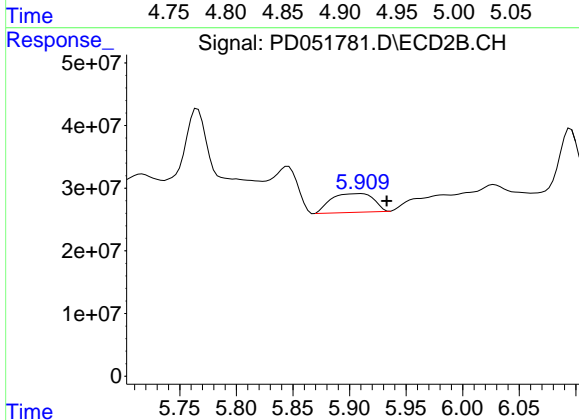
#7 delta-BHC

R.T.: 5.082 min  
 Delta R.T.: -0.031 min  
 Response: 12750131  
 Conc: 0.31 ng/ml



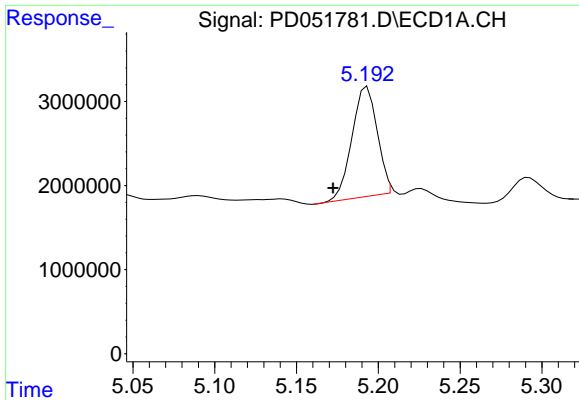
#8 Heptachlor epoxide

R.T.: 4.909 min  
 Delta R.T.: 0.058 min  
 Response: 10580986  
 Conc: 5.02 ng/ml



#8 Heptachlor epoxide

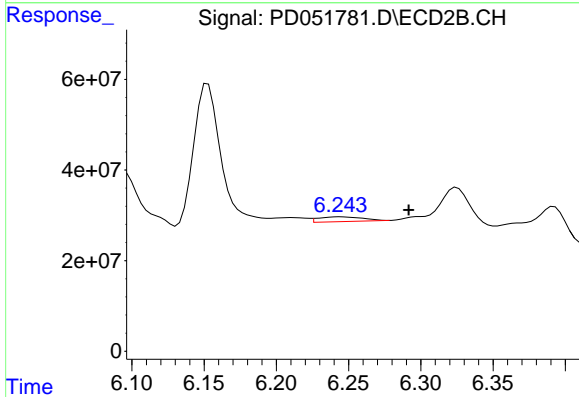
R.T.: 5.910 min  
 Delta R.T.: -0.023 min  
 Response: 78330237  
 Conc: 2.19 ng/ml



#9 Endosulfan I

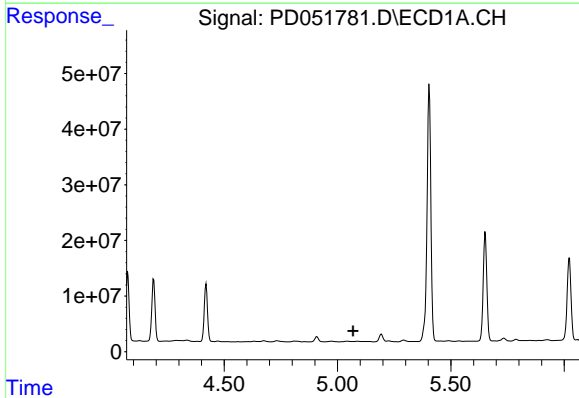
R.T.: 5.193 min  
 Delta R.T.: 0.021 min  
 Response: 14004691  
 Conc: 6.85 ng/ml

Instrument :  
 ECD\_D  
 ClientSampled :  
 DB648MSD



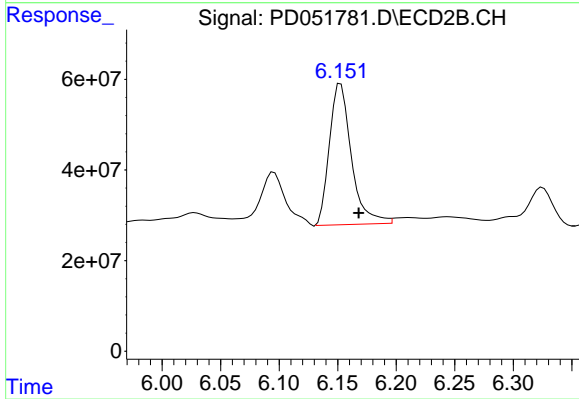
#9 Endosulfan I

R.T.: 6.244 min  
 Delta R.T.: -0.048 min  
 Response: 22214809  
 Conc: 0.67 ng/ml



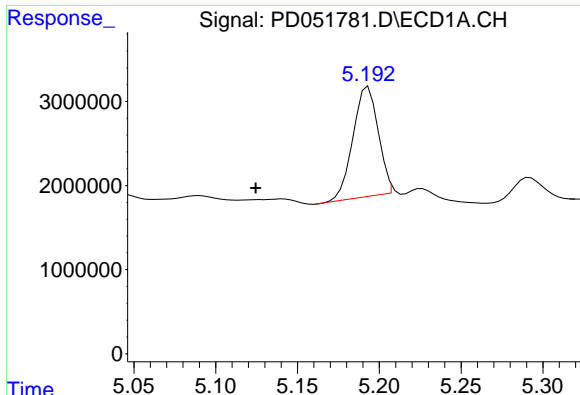
#10 trans-Chlordane

R.T.: 0.000 min  
 Exp R.T. : 5.068 min  
 Response: 0  
 Conc: N.D.



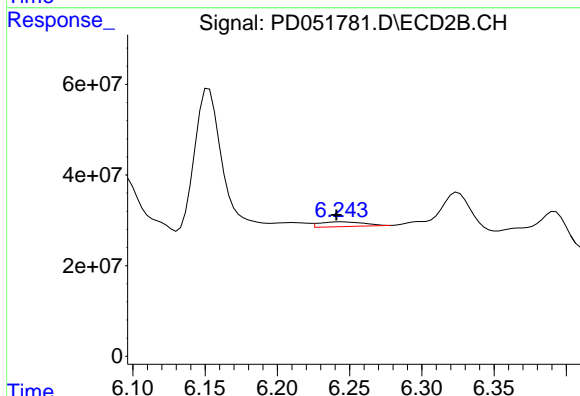
#10 trans-Chlordane

R.T.: 6.153 min  
 Delta R.T.: -0.015 min  
 Response: 407662646  
 Conc: 11.28 ng/ml

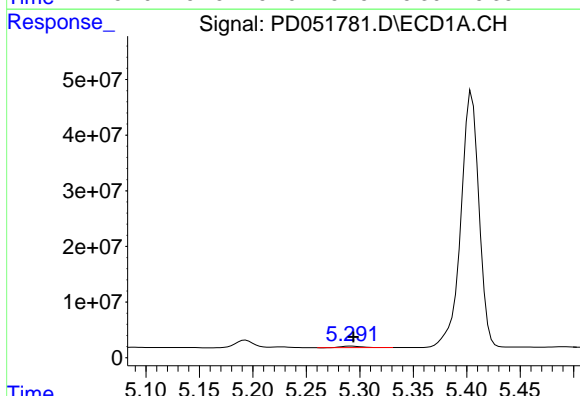


#11 cis-Chlordane  
 R.T.: 5.193 min  
 Delta R.T.: 0.069 min  
 Response: 14004691  
 Conc: 6.55 ng/ml

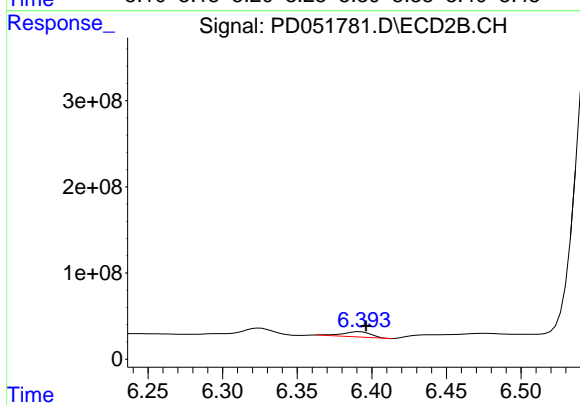
Instrument :  
 ECD\_D  
 ClientSampleID :  
 DB648MSD



#11 cis-Chlordane  
 R.T.: 6.244 min  
 Delta R.T.: 0.003 min  
 Response: 22214809  
 Conc: 0.64 ng/ml

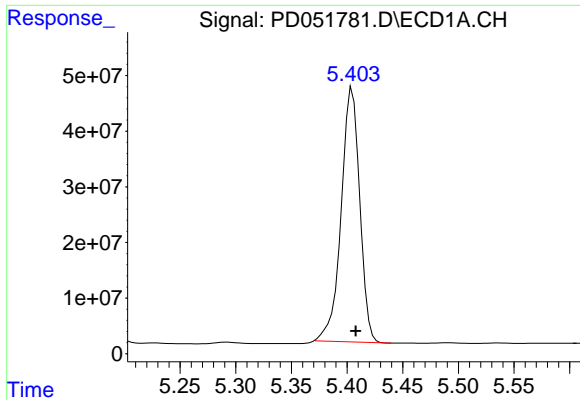


#12 4,4'-DDE  
 R.T.: 5.292 min  
 Delta R.T.: -0.002 min  
 Response: 3640977  
 Conc: 1.69 ng/ml



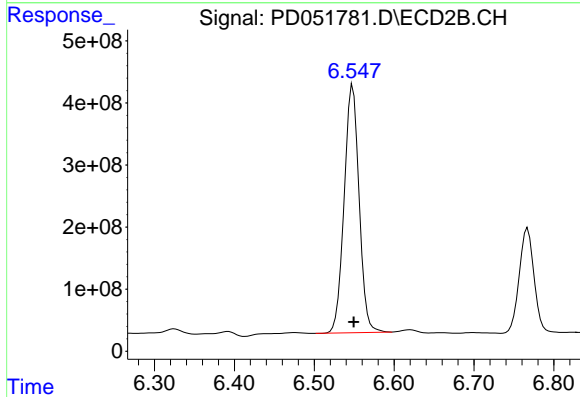
#12 4,4'-DDE  
 R.T.: 6.392 min  
 Delta R.T.: -0.004 min  
 Response: 80440604  
 Conc: 2.46 ng/ml



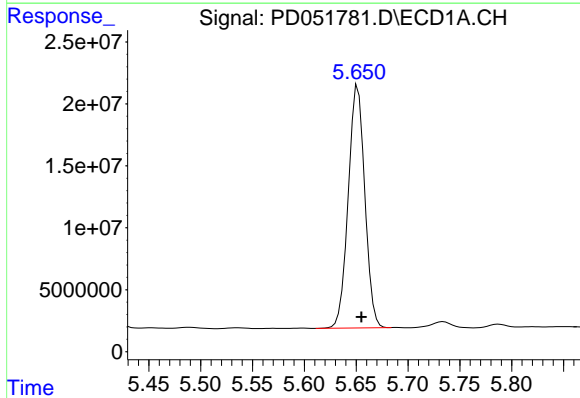


#13 Dieldrin  
 R.T.: 5.405 min  
 Delta R.T.: -0.003 min  
 Response: 529465051  
 Conc: 228.73 ng/ml

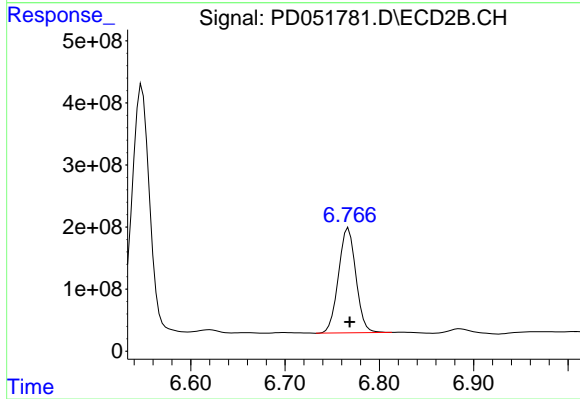
Instrument :  
 ECD\_D  
 ClientSampleId :  
 DB648MSD



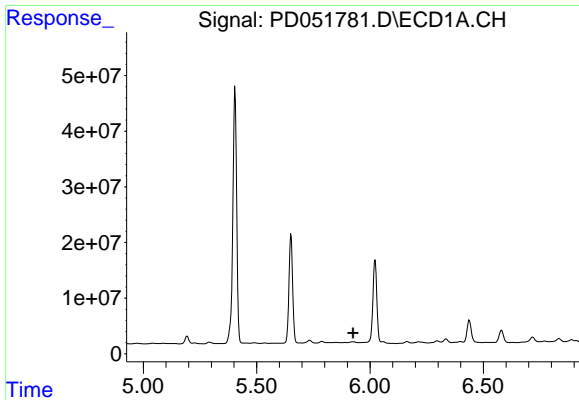
#13 Dieldrin  
 R.T.: 6.548 min  
 Delta R.T.: -0.001 min  
 Response: 5192399103  
 Conc: 155.98 ng/ml



#14 Endrin  
 R.T.: 5.652 min  
 Delta R.T.: -0.003 min  
 Response: 217635908  
 Conc: 106.84 ng/ml



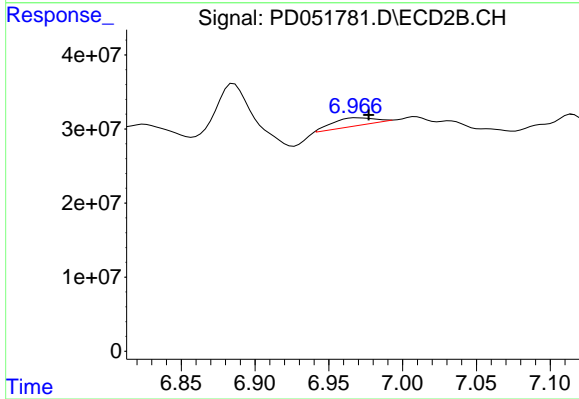
#14 Endrin  
 R.T.: 6.767 min  
 Delta R.T.: -0.002 min  
 Response: 2168067622  
 Conc: 82.03 ng/ml



#15 Endosulfan II

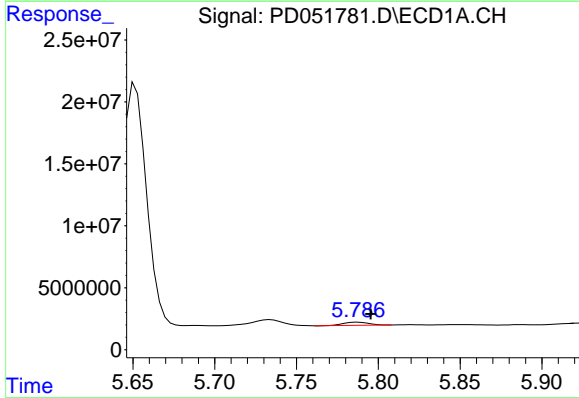
R.T.: 0.000 min  
 Exp R.T.: 5.925 min  
 Response: 0  
 Conc: N.D.

Instrument :  
 ECD\_D  
 ClientSampleId :  
 DB648MSD



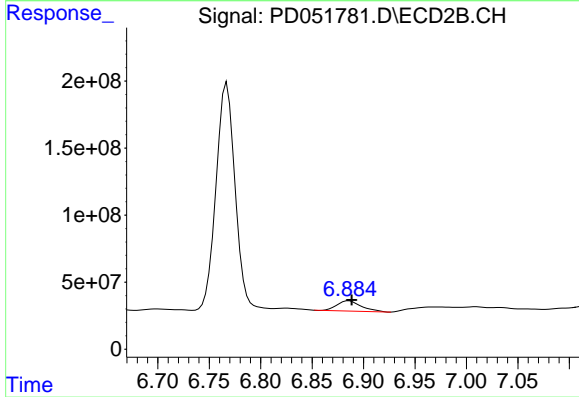
#15 Endosulfan II

R.T.: 6.970 min  
 Delta R.T.: -0.007 min  
 Response: 20836543  
 Conc: 0.76 ng/ml



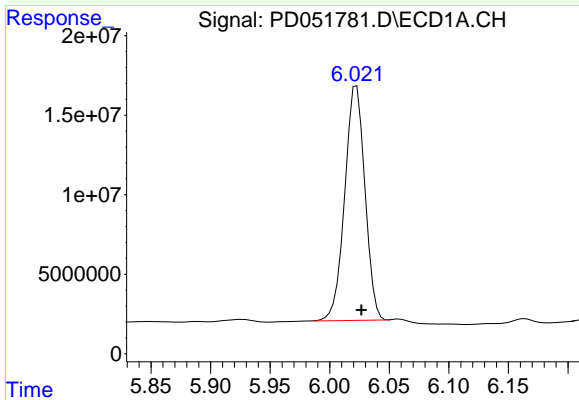
#16 4,4'-DDD

R.T.: 5.788 min  
 Delta R.T.: -0.008 min  
 Response: 2697060  
 Conc: 1.53 ng/ml



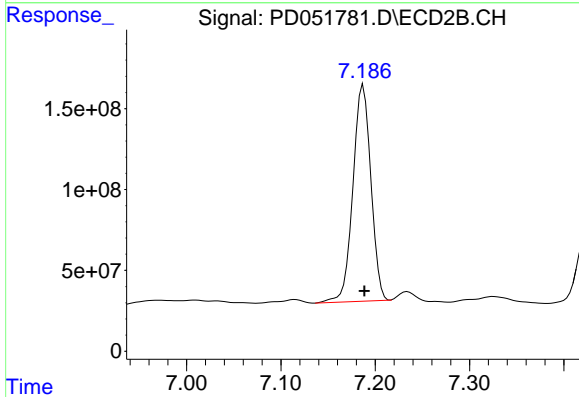
#16 4,4'-DDD

R.T.: 6.886 min  
 Delta R.T.: -0.003 min  
 Response: 125673030  
 Conc: 4.80 ng/ml

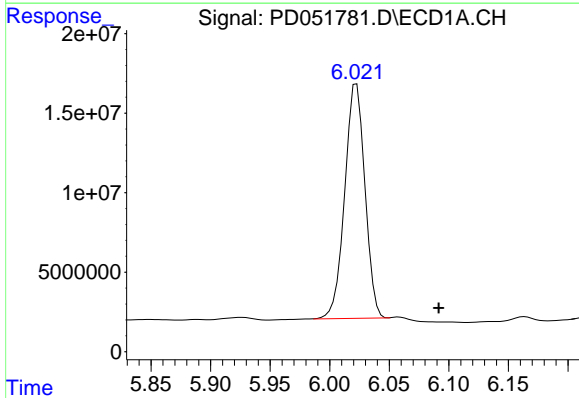


#17 4,4'-DDT  
 R.T.: 6.023 min  
 Delta R.T.: -0.004 min  
 Response: 174108012  
 Conc: 95.61 ng/ml

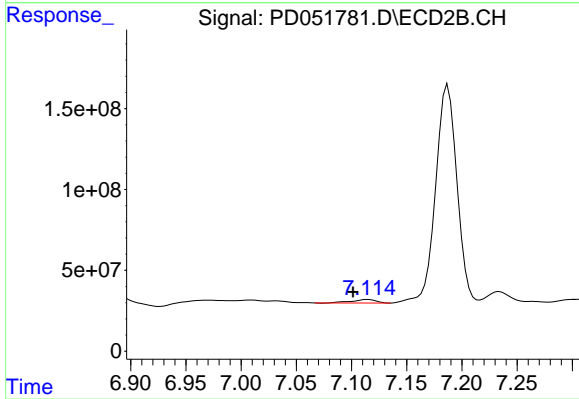
Instrument :  
 ECD\_D  
 ClientSampleID :  
 DB648MSD



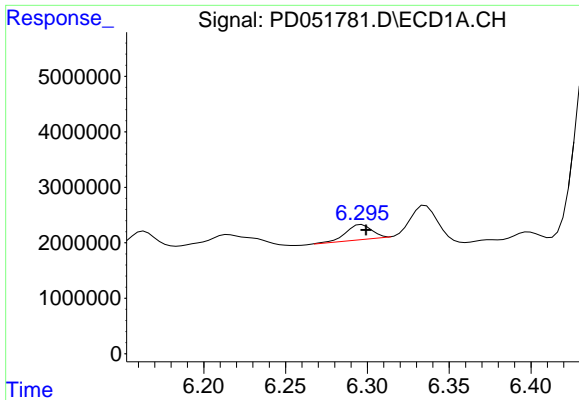
#17 4,4'-DDT  
 R.T.: 7.187 min  
 Delta R.T.: -0.001 min  
 Response: 1772046410  
 Conc: 76.83 ng/ml



#18 Endrin aldehyde  
 R.T.: 6.023 min  
 Delta R.T.: -0.069 min  
 Response: 174108012  
 Conc: 106.18 ng/ml

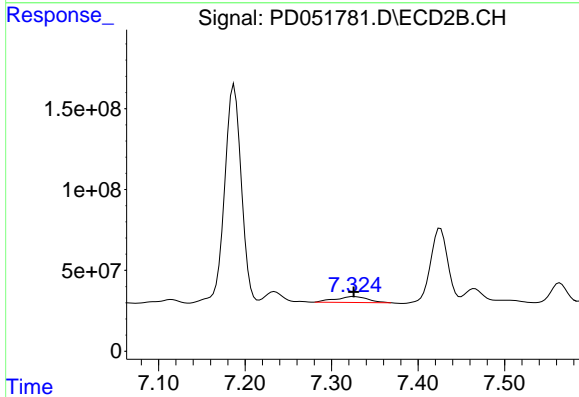


#18 Endrin aldehyde  
 R.T.: 7.115 min  
 Delta R.T.: 0.013 min  
 Response: 32626532  
 Conc: 1.45 ng/ml

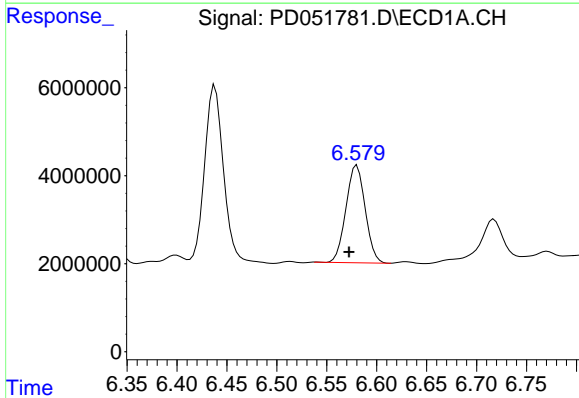


#19 Endosulfan Sulfate  
 R.T.: 6.297 min  
 Delta R.T.: -0.003 min  
 Response: 2950255  
 Conc: 1.60 ng/ml

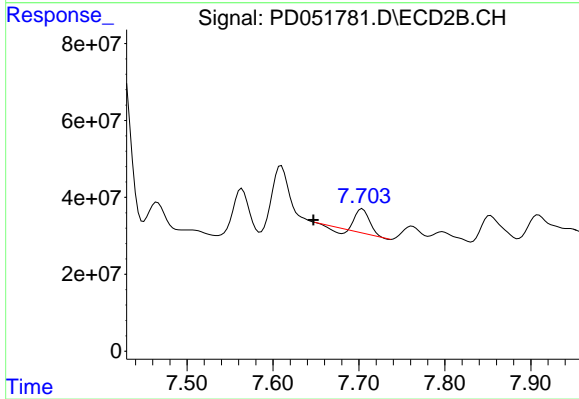
Instrument :  
 ECD\_D  
 ClientSampled :  
 DB648MSD



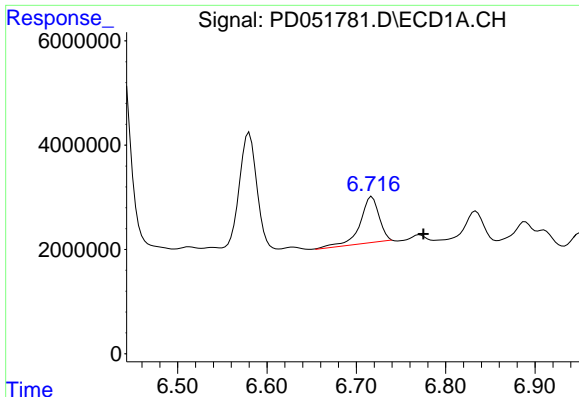
#19 Endosulfan Sulfate  
 R.T.: 7.326 min  
 Delta R.T.: 0.000 min  
 Response: 93817851  
 Conc: 3.70 ng/ml



#20 Methoxychlor  
 R.T.: 6.580 min  
 Delta R.T.: 0.008 min  
 Response: 29679232  
 Conc: 32.14 ng/ml



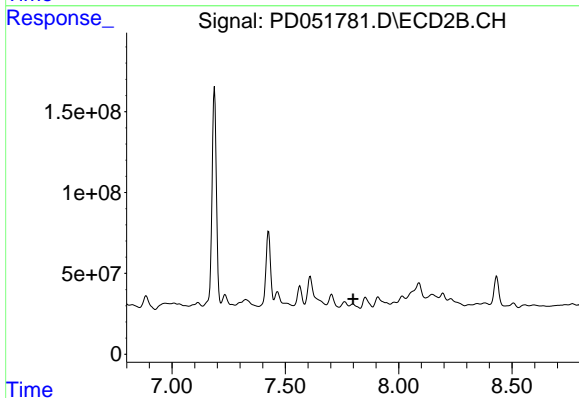
#20 Methoxychlor  
 R.T.: 7.704 min  
 Delta R.T.: 0.057 min  
 Response: 66403106  
 Conc: 6.27 ng/ml



#21 Endrin ketone

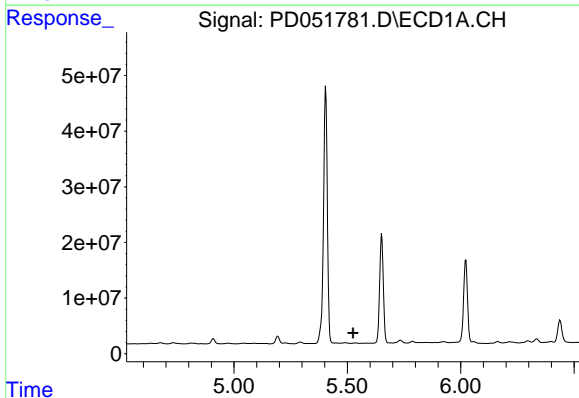
R.T.: 6.718 min  
Delta R.T.: -0.058 min  
Response: 13286623  
Conc: 6.54 ng/ml

Instrument :  
ECD\_D  
ClientSampled :  
DB648MSD



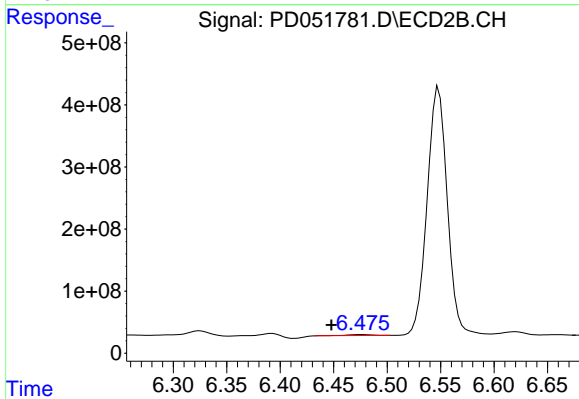
#21 Endrin ketone

R.T.: 0.000 min  
Exp R.T. : 7.799 min  
Response: 0  
Conc: N.D.



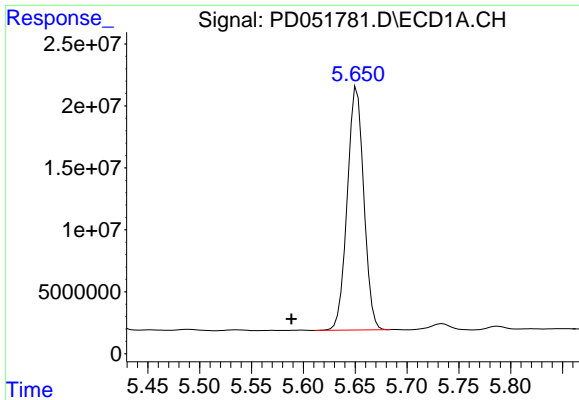
#22 Toxaphene-1

R.T.: 0.000 min  
Exp R.T. : 5.525 min  
Response: 0  
Conc: N.D.



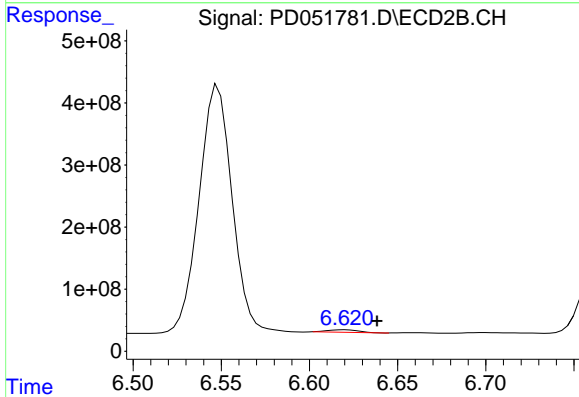
#22 Toxaphene-1

R.T.: 6.476 min  
Delta R.T.: 0.028 min  
Response: 26927230  
Conc: 179.19 ng/ml

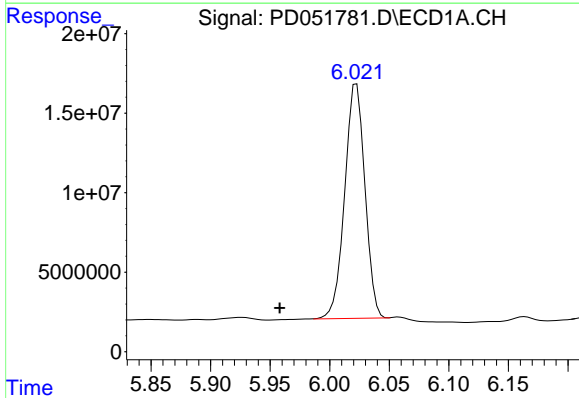


#23 Toxaphene-2  
 R.T.: 5.652 min  
 Delta R.T.: 0.063 min  
 Response: 217635908  
 Conc: 9513.83 ng/ml

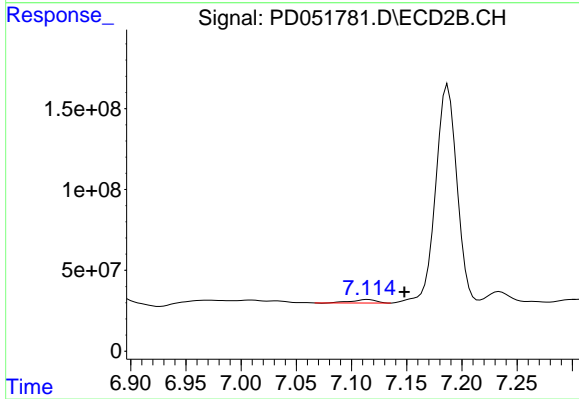
Instrument :  
 ECD\_D  
 ClientSampleId :  
 DB648MSD



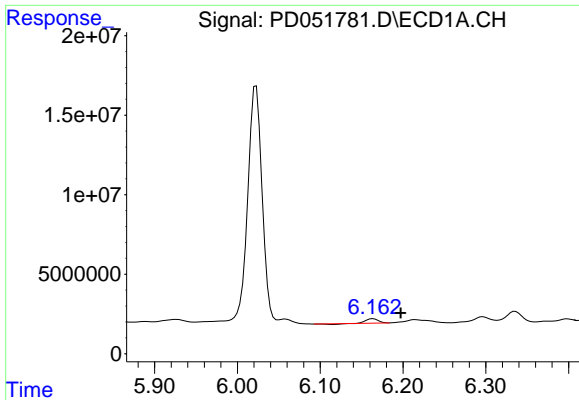
#23 Toxaphene-2  
 R.T.: 6.620 min  
 Delta R.T.: -0.018 min  
 Response: 49068532  
 Conc: 169.34 ng/ml



#24 Toxaphene-3  
 R.T.: 6.023 min  
 Delta R.T.: 0.065 min  
 Response: 174108012  
 Conc: 4576.12 ng/ml

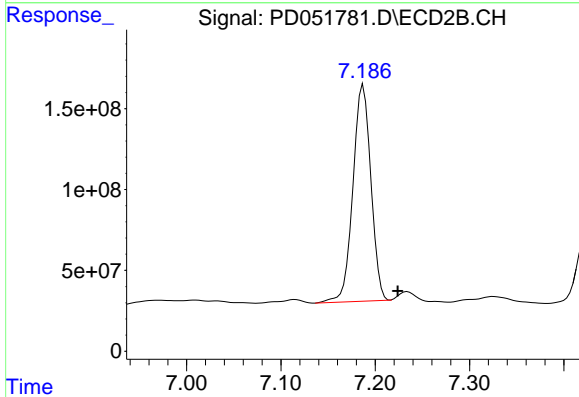


#24 Toxaphene-3  
 R.T.: 7.115 min  
 Delta R.T.: -0.033 min  
 Response: 32626532  
 Conc: 134.22 ng/ml

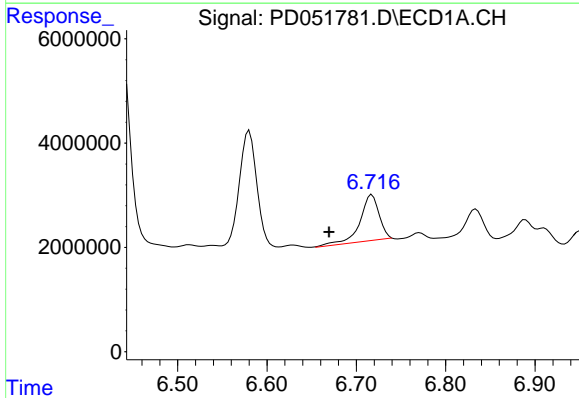


#25 Toxaphene-4  
 R.T.: 6.164 min  
 Delta R.T.: -0.034 min  
 Response: 2338480  
 Conc: 60.57 ng/ml

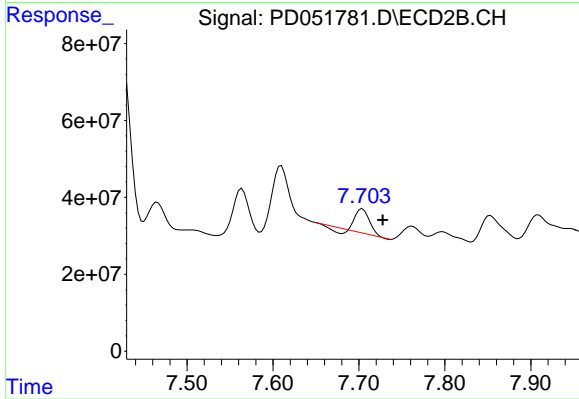
Instrument :  
 ECD\_D  
 ClientSampled :  
 DB648MSD



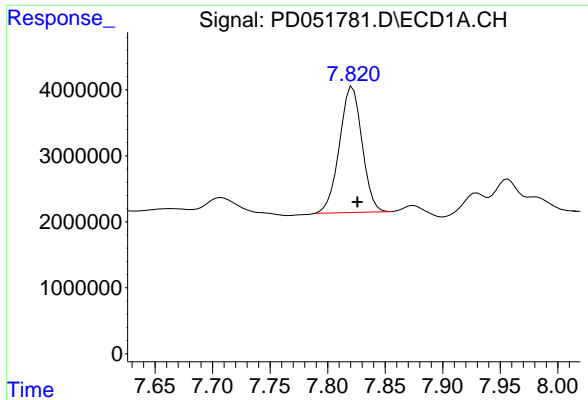
#25 Toxaphene-4  
 R.T.: 7.187 min  
 Delta R.T.: -0.037 min  
 Response: 1772046410  
 Conc: 2638.65 ng/ml



#26 Toxaphene-5  
 R.T.: 6.718 min  
 Delta R.T.: 0.048 min  
 Response: 13286623  
 Conc: 304.50 ng/ml



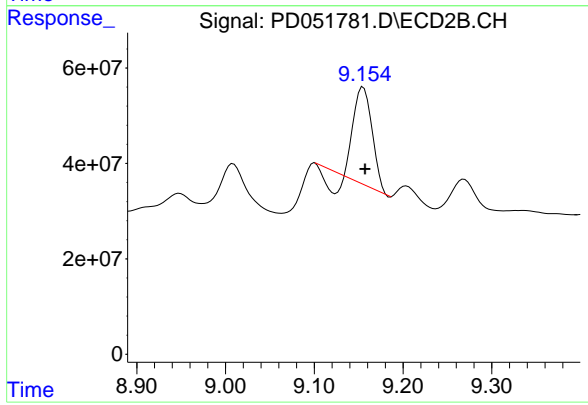
#26 Toxaphene-5  
 R.T.: 7.704 min  
 Delta R.T.: -0.024 min  
 Response: 66403106  
 Conc: 230.73 ng/ml



#27 Decachlorobiphenyl

R.T.: 7.822 min  
Delta R.T.: -0.004 min  
Response: 26090465  
Conc: 21.69 ng/ml

Instrument :  
ECD\_D  
ClientSampleId :  
DB648MSD



#27 Decachlorobiphenyl

R.T.: 9.155 min  
Delta R.T.: -0.002 min  
Response: 250559541  
Conc: 13.22 ng/ml