

Data Path : Z:\pestpcbsrv\HPCHEM1\ECD_D\Data\PD031220\
 Data File : PD057614.D
 Signal(s) : Signal #1: ECD1A.ch Signal #2: ECD2B.ch
 Acq On : 12 Mar 2020 17:27
 Operator : AJ\MA
 Sample : L1840-20
 Misc :
 ALS Vial : 26 Sample Multiplier: 1

Instrument :
 ECD_D
 ClientSampled :

Integration File signal 1: autoint1.e
 Integration File signal 2: autoint2.e
 Quant Time: Mar 13 01:54:18 2020
 Quant Method : Z:\pestpcbsrv\HPCHEM1\ECD_D\Method\PD031120CLP.M
 Quant Title : GC Extractables
 QLast Update : Thu Mar 12 06:32:50 2020
 Response via : Initial Calibration
 Integrator: ChemStation

Volume Inj. : 1 µl
 Signal #1 Phase : ZB-MR2 Signal #2 Phase: ZB-MR1
 Signal #1 Info : 30M x 0.32mm x0.2 Signal #2 Info : 30M x 0.32mm x 0.50µm

Compound	RT#1	RT#2	Resp#1	Resp#2	ng/ml	ng/ml

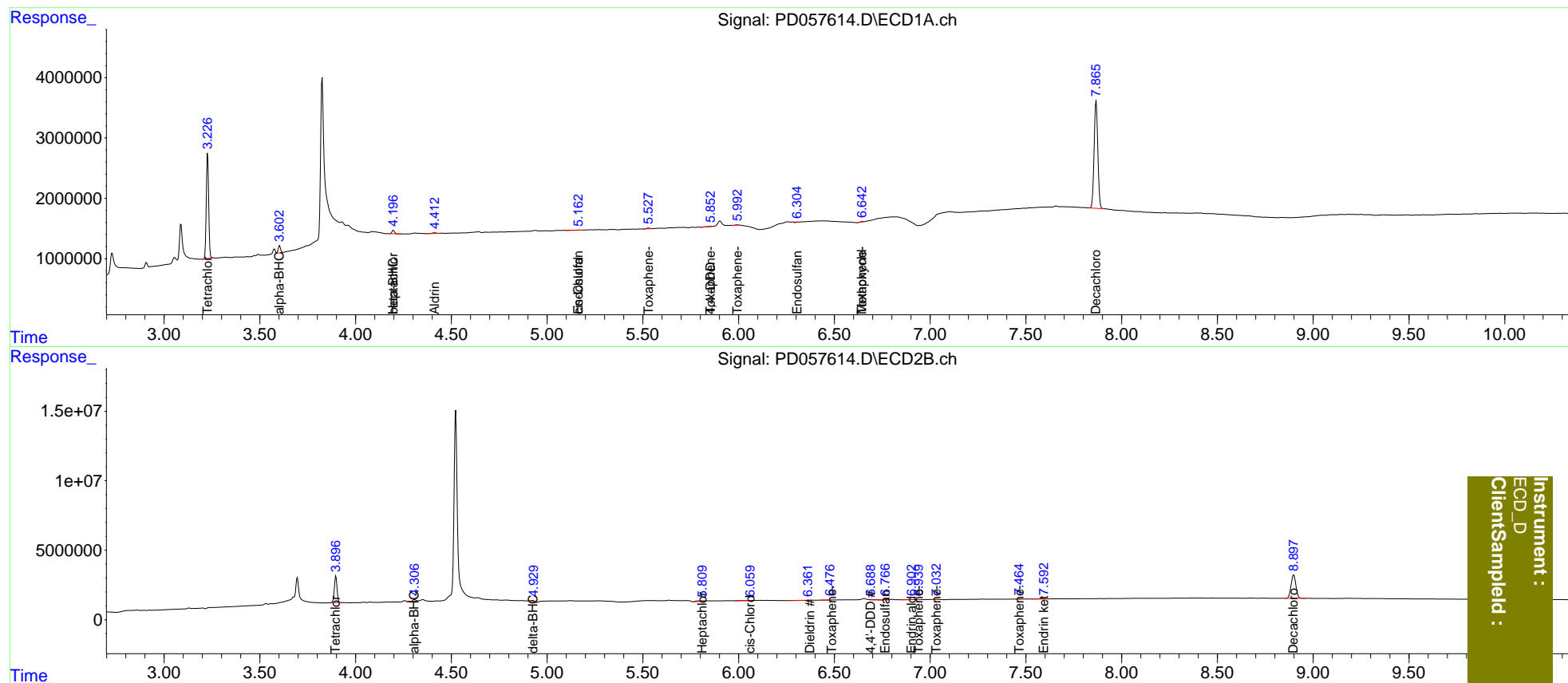
System Monitoring Compounds						
1) SA Tetrachlo...	3.228	3.897	15058415	18776528	16.491	18.921
2) SA Decachlor...	7.866	8.898	23831692	29320829	24.476	27.688
Target Compounds						
2) A alpha-BHC	3.603f	4.308f	1077014	639611	0.815	0.454 #
4) MA Heptachlor	4.198	0.000	551523	0	0.603	N.D. #
5) MB Aldrin	4.413f	0.000	223586	0	0.185	N.D. #
6) B beta-BHC	4.198f	0.000	551523	0	0.980	N.D. #
7) B delta-BHC	0.000	4.926	0	763710	N.D.	0.559
8) B Heptachlo...	4.807f	5.810f	79563	1272937	<MDL	1.008 #
9) A Endosulfan I	5.164	6.093	138100	118491	0.141	<MDL #
11) B cis-Chlor...	5.164	6.062	138100	170414	0.121	0.125
12) B 4,4'-DDE	0.000	6.145f	0	31020	N.D.	<MDL
13) MA Dieldrin	0.000	6.362	0	227961	N.D.	0.170
15) B Endosulfa...	5.994	6.767	52502	635306	<MDL	0.553 #
16) A 4,4'-DDD	5.856	6.689	91110	688369	0.147	0.635 #
17) MA 4,4'-DDT	5.994f	6.984	52502	18383	<MDL	<MDL #
18) B Endrin al...	0.000	6.905	0	392943	N.D.	0.395
19) B Endosulfa...	6.306	7.129	92946	11909	0.102	<MDL #
20) A Methoxychlor	6.645f	7.466	58228	33288	0.238	<MDL #
21) B Endrin ke...	0.000	7.594	0	263013	N.D.	0.217
23) Toxaphene-2	5.529	6.478	158135	67308	31.987	8.110 #
24) Toxaphene-3	5.856	6.940	91110	42469	25.685	4.164 #
25) Toxaphene-4	5.994	7.035	52502	53262	3.935	1.830 #
26) Toxaphene-5	6.645	7.466	58228	33288	4.282	2.411 #

(f)=RT Delta > 1/2 Window (#)=Amounts differ by > 25% (m)=manual int.

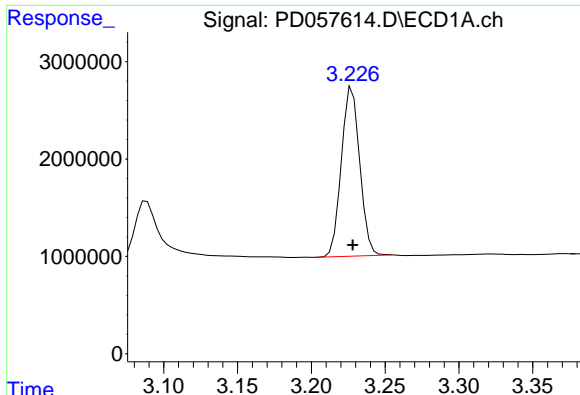
Data Path : Z:\pestpcbsrv\HPCHEM1\ECD_D\Data\PD031220\
 Data File : PD057614.D
 Signal(s) : Signal #1: ECD1A.ch Signal #2: ECD2B.ch
 Acq On : 12 Mar 2020 17:27
 Operator : AJ\MA
 Sample : L1840-20
 Misc :
 ALS Vial : 26 Sample Multiplier: 1

Integration File signal 1: autoint1.e
 Integration File signal 2: autoint2.e
 Quant Time: Mar 13 01:54:18 2020
 Quant Method : Z:\pestpcbsrv\HPCHEM1\ECD_D\Method\PD031120CLP.M
 Quant Title : GC Extractables
 QLast Update : Thu Mar 12 06:32:50 2020
 Response via : Initial Calibration
 Integrator: ChemStation

Volume Inj. : 1 µl
 Signal #1 Phase : ZB-MR2 Signal #2 Phase: ZB-MR1
 Signal #1 Info : 30M x 0.32mm x0.2 Signal #2 Info : 30M x 0.32mm x 0.50µm

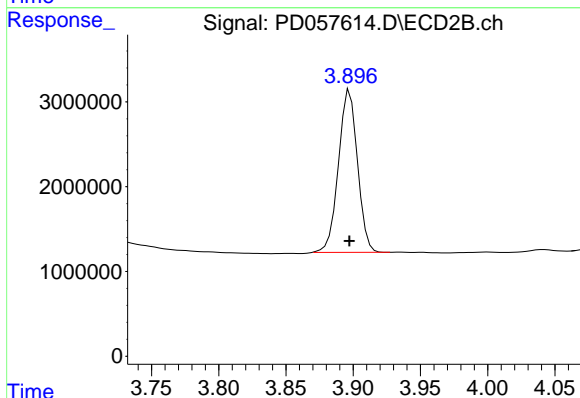


Instrument :
 ECD_D
 ClientSampled :

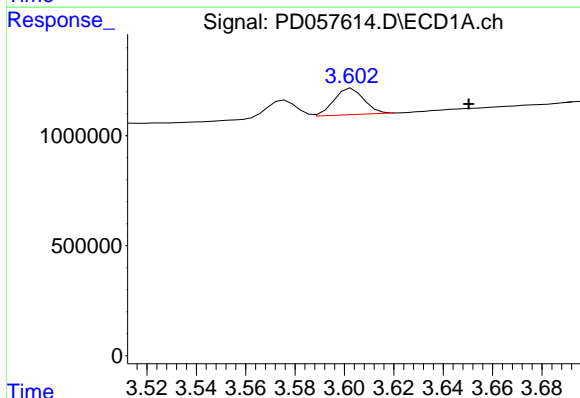


#1 Tetrachloro-m-xylene
 R.T.: 3.228 min
 Delta R.T.: 0.000 min
 Response: 15058415
 Conc: 16.49 ng/ml

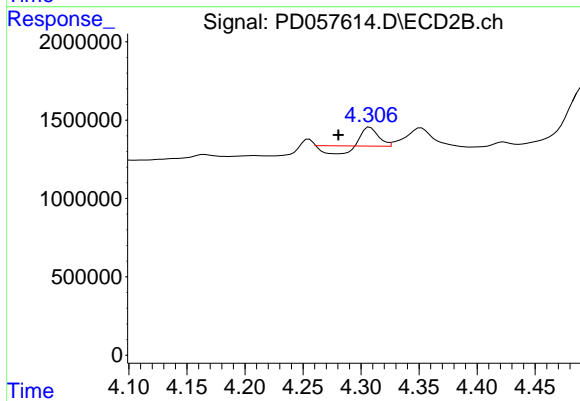
Instrument :
 ECD_D
 ClientSampled :



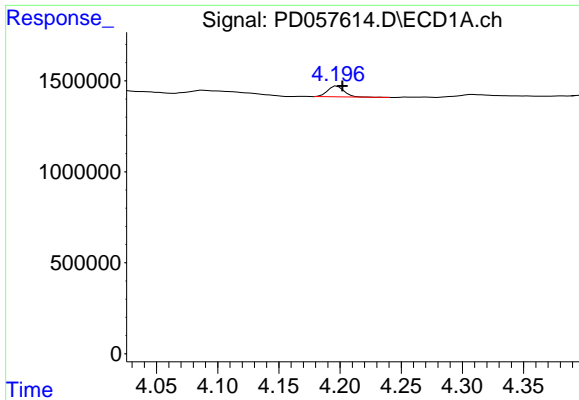
#1 Tetrachloro-m-xylene
 R.T.: 3.897 min
 Delta R.T.: 0.000 min
 Response: 18776528
 Conc: 18.92 ng/ml



#2 alpha-BHC
 R.T.: 3.603 min
 Delta R.T.: -0.047 min
 Response: 1077014
 Conc: 0.81 ng/ml



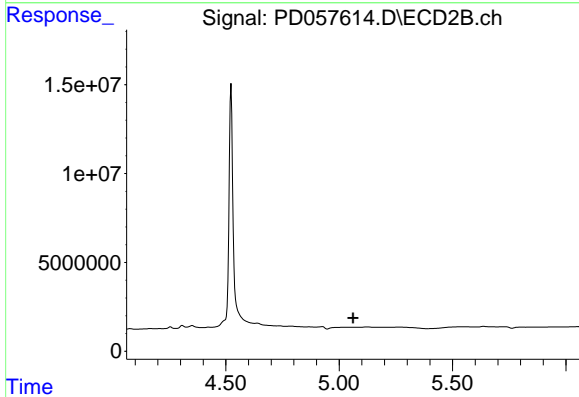
#2 alpha-BHC
 R.T.: 4.308 min
 Delta R.T.: 0.027 min
 Response: 639611
 Conc: 0.45 ng/ml



#4 Heptachlor

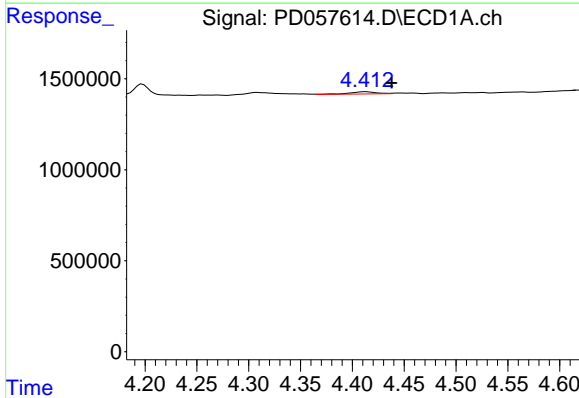
R.T.: 4.198 min
 Delta R.T.: -0.004 min
 Response: 551523
 Conc: 0.60 ng/ml

Instrument :
 ECD_D
 ClientSampled :



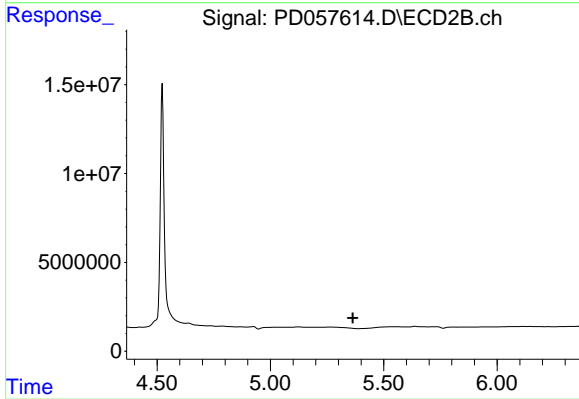
#4 Heptachlor

R.T.: 0.000 min
 Exp R.T. : 5.062 min
 Response: 0
 Conc: N.D.



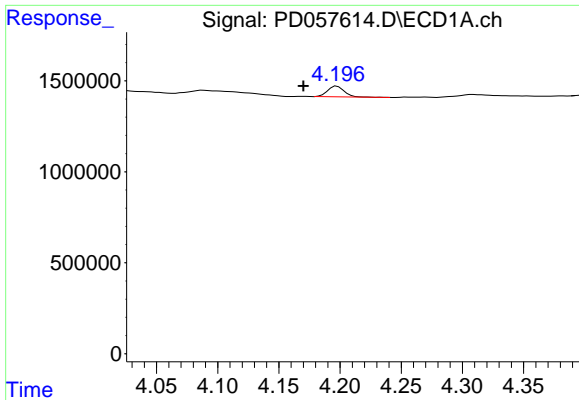
#5 Aldrin

R.T.: 4.413 min
 Delta R.T.: -0.025 min
 Response: 223586
 Conc: 0.19 ng/ml



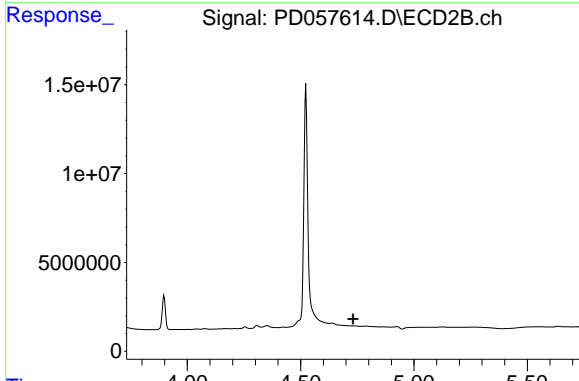
#5 Aldrin

R.T.: 0.000 min
 Exp R.T. : 5.363 min
 Response: 0
 Conc: N.D.

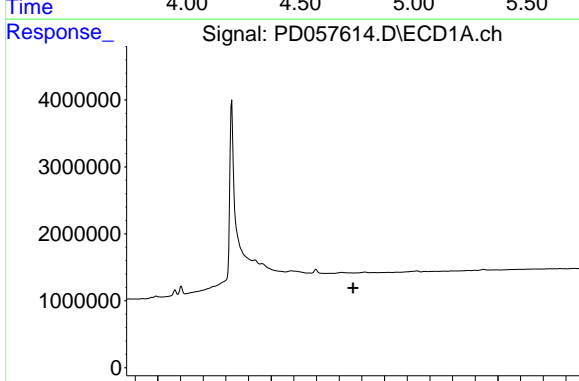


#6 beta-BHC
 R.T.: 4.198 min
 Delta R.T.: 0.027 min
 Response: 551523
 Conc: 0.98 ng/ml

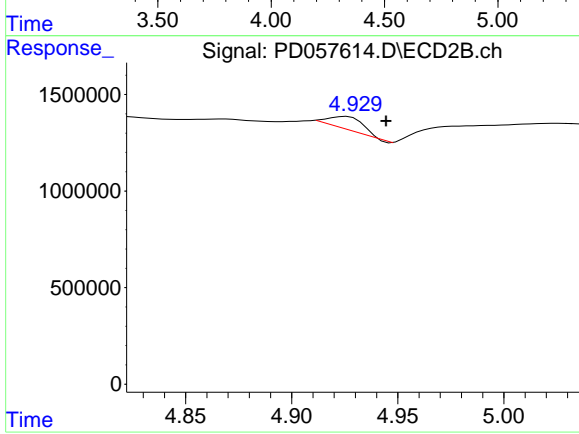
Instrument :
 ECD_D
 ClientSampleId :



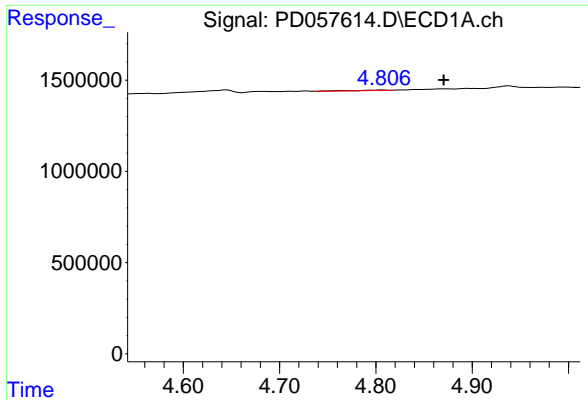
#6 beta-BHC
 R.T.: 0.000 min
 Exp R.T. : 4.731 min
 Response: 0
 Conc: N.D.



#7 delta-BHC
 R.T.: 0.000 min
 Exp R.T. : 4.362 min
 Response: 0
 Conc: N.D.

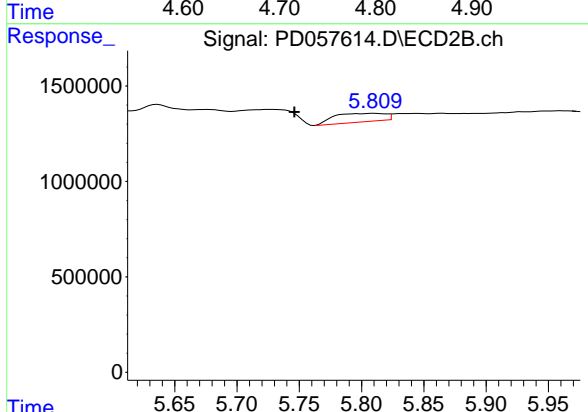


#7 delta-BHC
 R.T.: 4.926 min
 Delta R.T.: -0.019 min
 Response: 763710
 Conc: 0.56 ng/ml

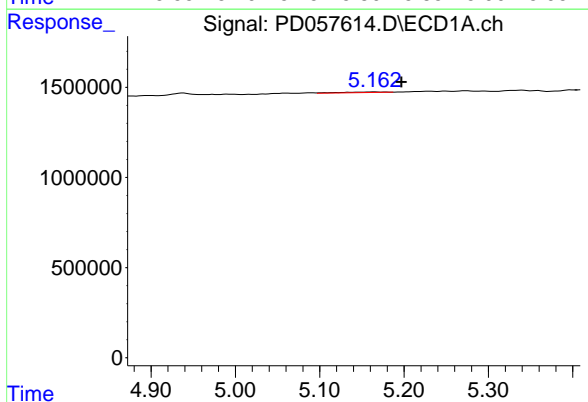


#8 Heptachlor epoxide
 R.T.: 4.807 min
 Delta R.T.: -0.063 min
 Response: 79563
 Conc: N.D.

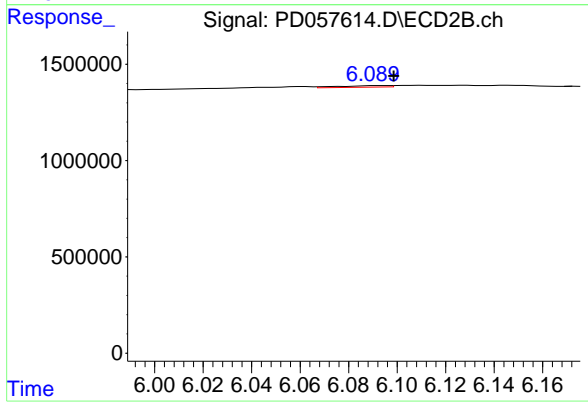
Instrument :
 ECD_D
 ClientSampleId :



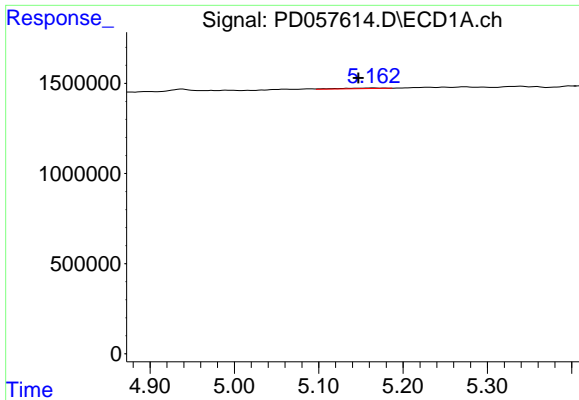
#8 Heptachlor epoxide
 R.T.: 5.810 min
 Delta R.T.: 0.064 min
 Response: 1272937
 Conc: 1.01 ng/ml



#9 Endosulfan I
 R.T.: 5.164 min
 Delta R.T.: -0.033 min
 Response: 138100
 Conc: 0.14 ng/ml

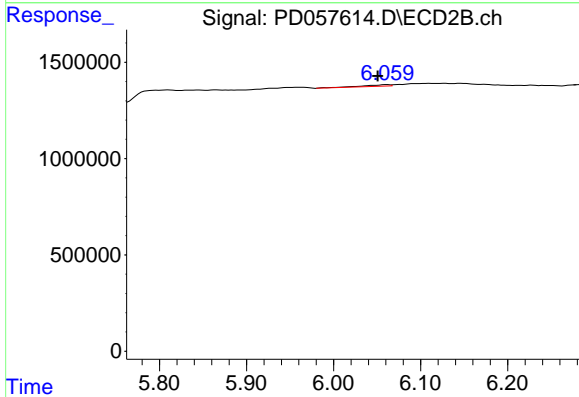


#9 Endosulfan I
 R.T.: 6.093 min
 Delta R.T.: -0.006 min
 Response: 118491
 Conc: N.D.

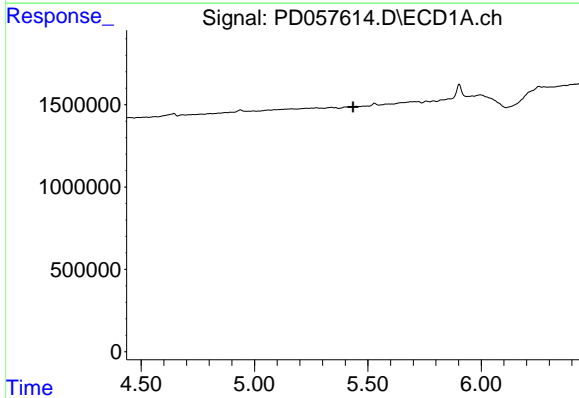


#11 cis-Chlordane
 R.T.: 5.164 min
 Delta R.T.: 0.018 min
 Response: 138100
 Conc: 0.12 ng/ml

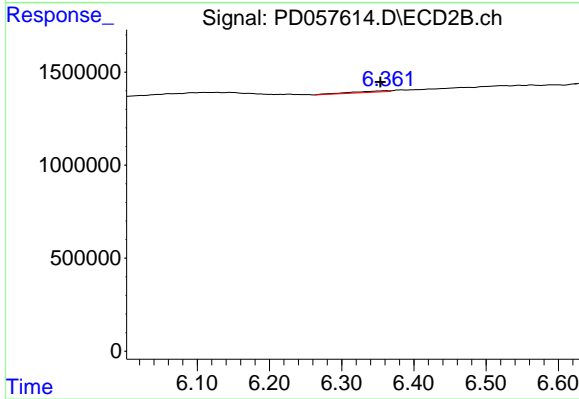
Instrument :
 ECD_D
 ClientSampleId :



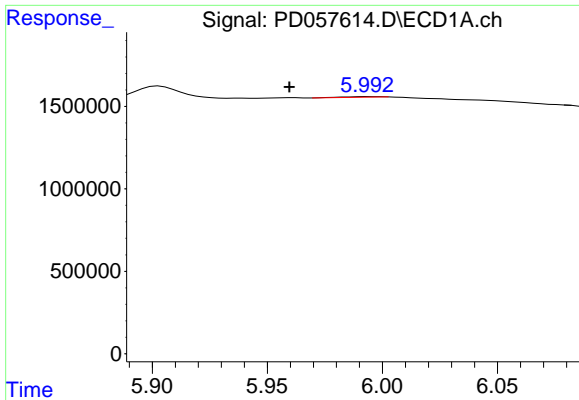
#11 cis-Chlordane
 R.T.: 6.062 min
 Delta R.T.: 0.011 min
 Response: 170414
 Conc: 0.13 ng/ml



#13 Dieldrin
 R.T.: 0.000 min
 Exp R.T. : 5.435 min
 Response: 0
 Conc: N.D.



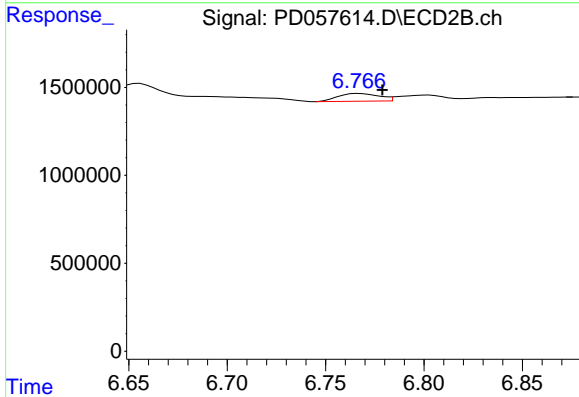
#13 Dieldrin
 R.T.: 6.362 min
 Delta R.T.: 0.009 min
 Response: 227961
 Conc: 0.17 ng/ml



#15 Endosulfan II

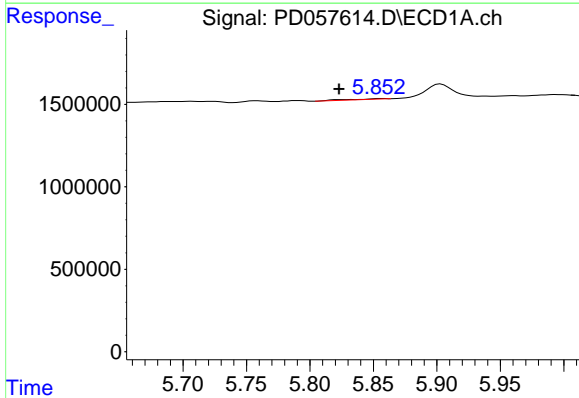
R.T.: 5.994 min
 Delta R.T.: 0.035 min
 Response: 52502
 Conc: N.D.

Instrument :
 ECD_D
 ClientSampleId :



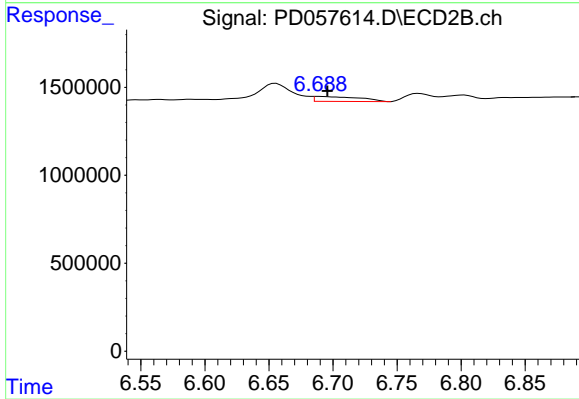
#15 Endosulfan II

R.T.: 6.767 min
 Delta R.T.: -0.012 min
 Response: 635306
 Conc: 0.55 ng/ml



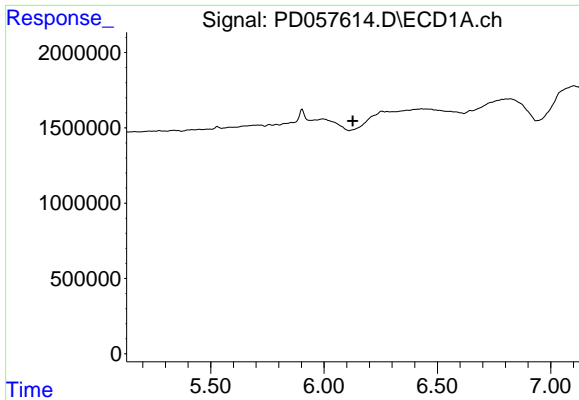
#16 4,4'-DDD

R.T.: 5.856 min
 Delta R.T.: 0.033 min
 Response: 91110
 Conc: 0.15 ng/ml



#16 4,4'-DDD

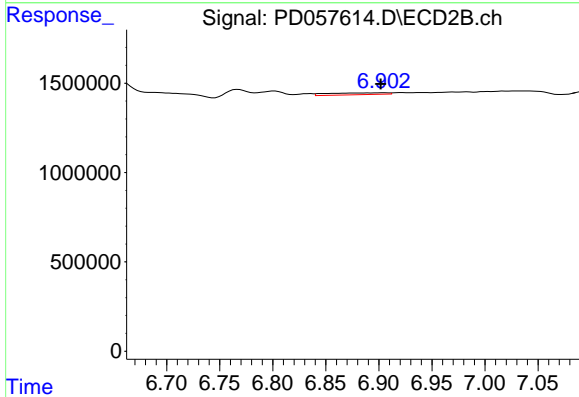
R.T.: 6.689 min
 Delta R.T.: -0.006 min
 Response: 688369
 Conc: 0.64 ng/ml



#18 Endrin aldehyde

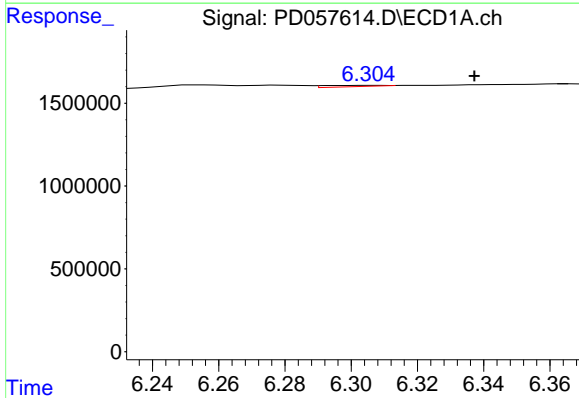
R.T.: 0.000 min
 Exp R.T.: 6.127 min
 Response: 0
 Conc: N.D.

Instrument :
 ECD_D
 ClientSampleId :



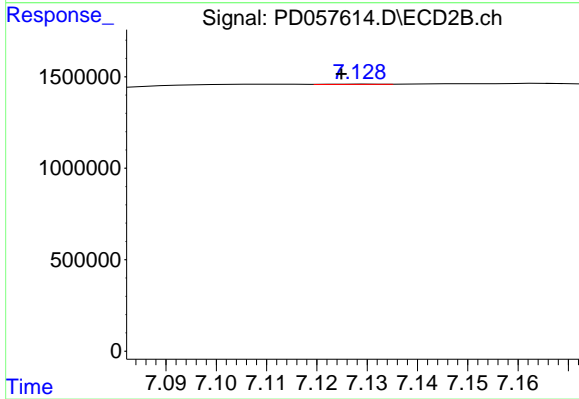
#18 Endrin aldehyde

R.T.: 6.905 min
 Delta R.T.: 0.003 min
 Response: 392943
 Conc: 0.39 ng/ml



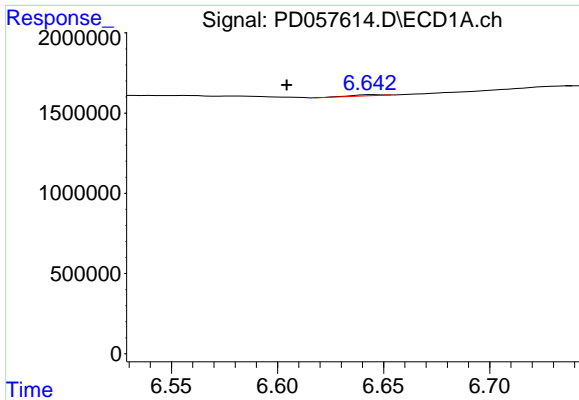
#19 Endosulfan Sulfate

R.T.: 6.306 min
 Delta R.T.: -0.032 min
 Response: 92946
 Conc: 0.10 ng/ml



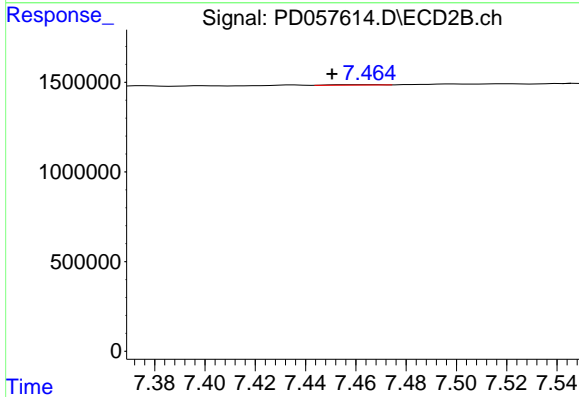
#19 Endosulfan Sulfate

R.T.: 7.129 min
 Delta R.T.: 0.004 min
 Response: 11909
 Conc: N.D.

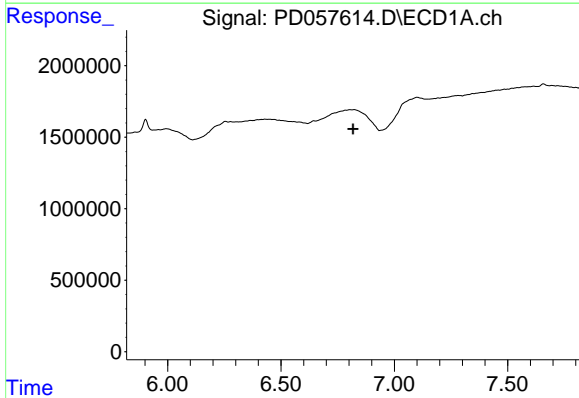


#20 Methoxychlor
 R.T.: 6.645 min
 Delta R.T.: 0.041 min
 Response: 58228
 Conc: 0.24 ng/ml

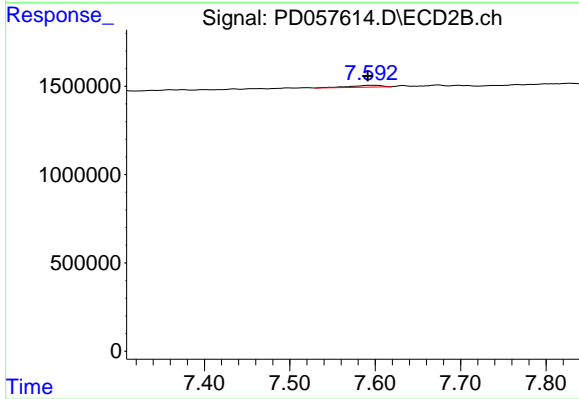
Instrument :
 ECD_D
 ClientSampled :



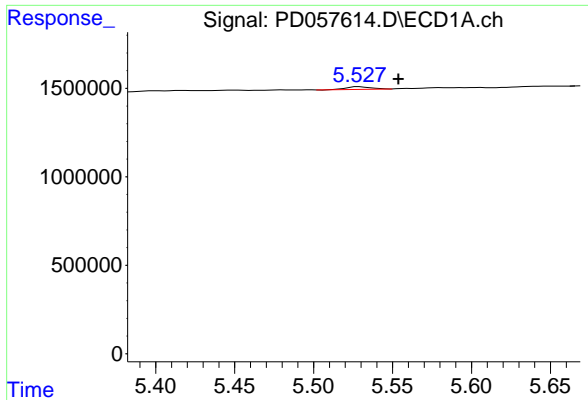
#20 Methoxychlor
 R.T.: 7.466 min
 Delta R.T.: 0.015 min
 Response: 33288
 Conc: N.D.



#21 Endrin ketone
 R.T.: 0.000 min
 Exp R.T. : 6.818 min
 Response: 0
 Conc: N.D.

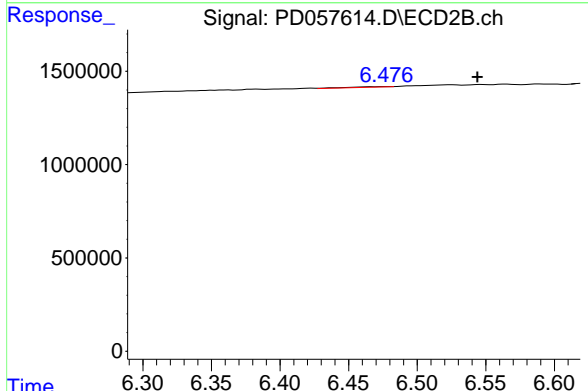


#21 Endrin ketone
 R.T.: 7.594 min
 Delta R.T.: 0.003 min
 Response: 263013
 Conc: 0.22 ng/ml

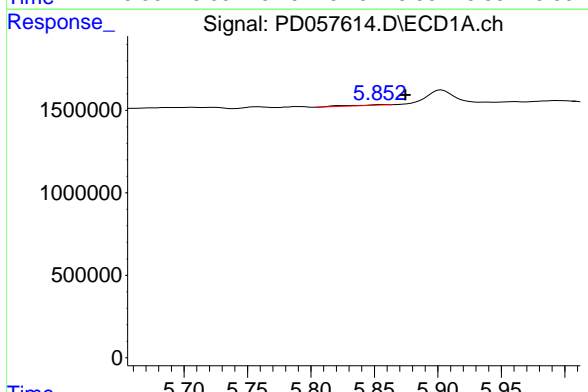


#23 Toxaphene-2
 R.T.: 5.529 min
 Delta R.T.: -0.025 min
 Response: 158135
 Conc: 31.99 ng/ml

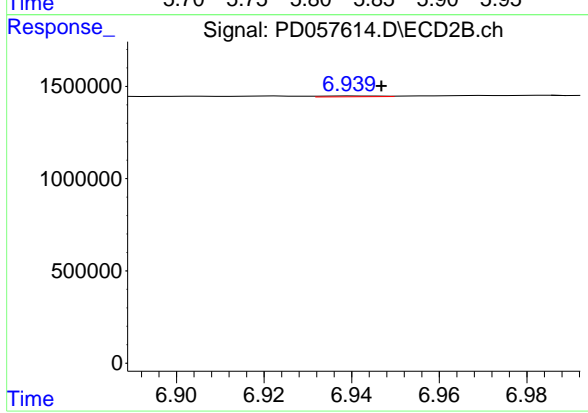
Instrument :
 ECD_D
 ClientSampleId :



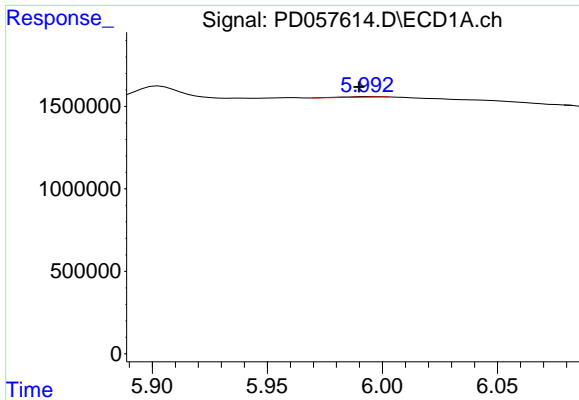
#23 Toxaphene-2
 R.T.: 6.478 min
 Delta R.T.: -0.066 min
 Response: 67308
 Conc: 8.11 ng/ml



#24 Toxaphene-3
 R.T.: 5.856 min
 Delta R.T.: -0.019 min
 Response: 91110
 Conc: 25.68 ng/ml

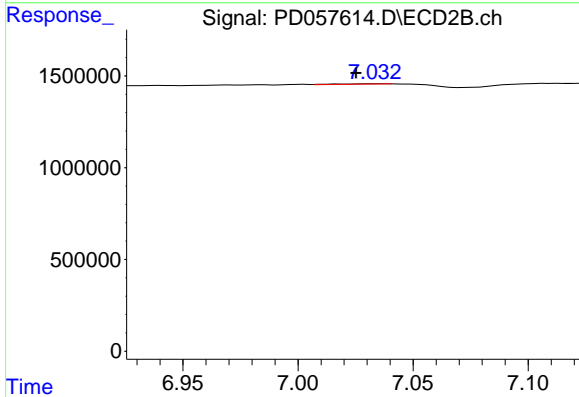


#24 Toxaphene-3
 R.T.: 6.940 min
 Delta R.T.: -0.006 min
 Response: 42469
 Conc: 4.16 ng/ml

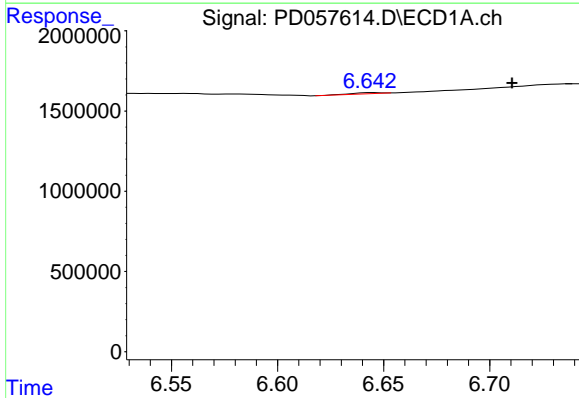


#25 Toxaphene-4
 R.T.: 5.994 min
 Delta R.T.: 0.004 min
 Response: 52502
 Conc: 3.93 ng/ml

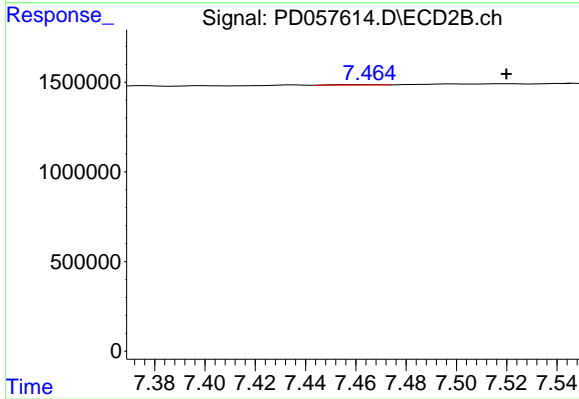
Instrument :
 ECD_D
 ClientSampleId :



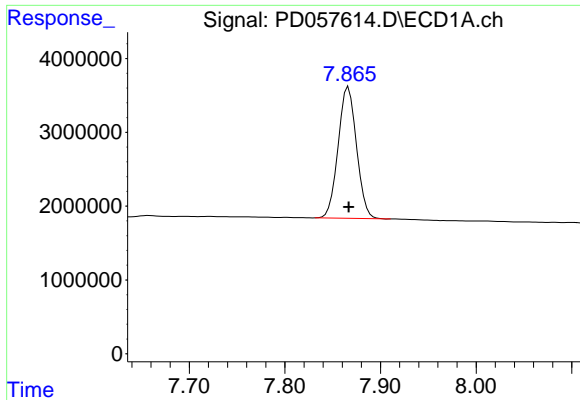
#25 Toxaphene-4
 R.T.: 7.035 min
 Delta R.T.: 0.010 min
 Response: 53262
 Conc: 1.83 ng/ml



#26 Toxaphene-5
 R.T.: 6.645 min
 Delta R.T.: -0.065 min
 Response: 58228
 Conc: 4.28 ng/ml



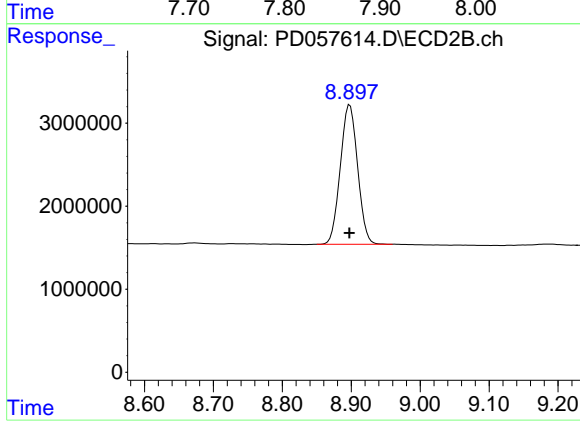
#26 Toxaphene-5
 R.T.: 7.466 min
 Delta R.T.: -0.054 min
 Response: 33288
 Conc: 2.41 ng/ml



#27 Decachlorobiphenyl

R.T.: 7.866 min
Delta R.T.: 0.000 min
Response: 23831692
Conc: 24.48 ng/ml

Instrument :
ECD_D
ClientSampleId :



#27 Decachlorobiphenyl

R.T.: 8.898 min
Delta R.T.: 0.000 min
Response: 29320829
Conc: 27.69 ng/ml