

Data Path : Z:\pestpcbsrv\HPCHEM1\ECD_D\Data\PD031224\
 Data File : PD082110.D
 Signal(s) : Signal #1: ECD1A.ch Signal #2: ECD2B.ch
 Acq On : 11 Mar 2024 19:35
 Operator : AR\AJ
 Sample : PTOXICC1000
 Misc :
 ALS Vial : 36 Sample Multiplier: 1

Instrument :
 ECD_D
ClientSampleId :
 PTOXICC1000

Manual Integrations
APPROVED
 Reviewed By :Abdul Mirza 03/13/2024
 Supervised By :Ankita Jodhani 03/13/2024

Integration File signal 1: autoint1.e
 Integration File signal 2: autoint2.e
 Quant Time: Mar 12 04:53:41 2024
 Quant Method : Z:\pestpcbsrv\HPCHEM1\ECD_D\Method\DTX031224.M
 Quant Title : GC Extractables
 QLast Update : Tue Mar 12 04:44:32 2024
 Response via : Initial Calibration
 Integrator: ChemStation

Volume Inj. : 1 µl
 Signal #1 Phase : ZB-MR1 Signal #2 Phase: ZB-MR2
 Signal #1 Info : 30M x 0.32mm x 0. Signal #2 Info : 30M x 0.32mm x0.25µm

Compound	RT#1	RT#2	Resp#1	Resp#2	ng/ml	ng/ml

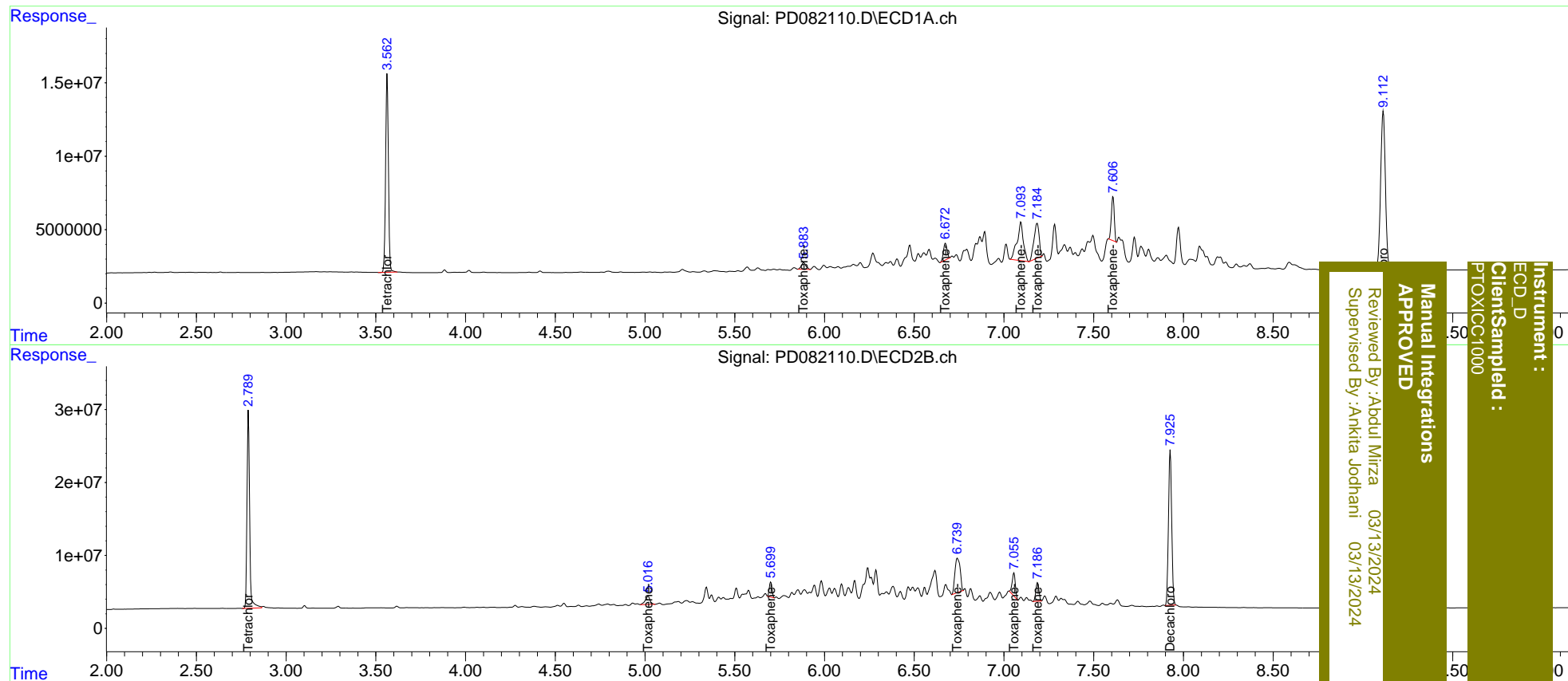
System Monitoring Compounds						
1) SA Tetrachlo...	3.563	2.790	146.7E6	274.1E6	103.483	99.438
7) SA Decachlor...	9.113	7.927	200.3E6	266.6E6	96.601	96.353
Target Compounds						
2) Toxaphene-1	5.884	5.017	7975250	21085476	968.611	995.128
3) Toxaphene-2	6.674	5.699	15791314	21701558	1033.924	1013.055m
4) Toxaphene-3	7.094	6.740	63146326	94870644	1022.674	1028.306
5) Toxaphene-4	7.185	7.055	47315977	38622756	1029.063	1030.475m
6) Toxaphene-5	7.608	7.187	33883840	30731886	1008.431	1119.408

(f)=RT Delta > 1/2 Window (#)=Amounts differ by > 25% (m)=manual int.

Data Path : Z:\pestpcbsrv\HPCHEM1\ECD_D\Data\PD031224\
 Data File : PD082110.D
 Signal(s) : Signal #1: ECD1A.ch Signal #2: ECD2B.ch
 Acq On : 11 Mar 2024 19:35
 Operator : AR\AJ
 Sample : PTOXICC1000
 Misc :
 ALS Vial : 36 Sample Multiplier: 1

Integration File signal 1: autoint1.e
 Integration File signal 2: autoint2.e
 Quant Time: Mar 12 04:53:41 2024
 Quant Method : Z:\pestpcbsrv\HPCHEM1\ECD_D\Method\DTX031224.M
 Quant Title : GC Extractables
 QLast Update : Tue Mar 12 04:44:32 2024
 Response via : Initial Calibration
 Integrator: ChemStation

Volume Inj. : 1 µl
 Signal #1 Phase : ZB-MR1 Signal #2 Phase: ZB-MR2
 Signal #1 Info : 30M x 0.32mm x 0. Signal #2 Info : 30M x 0.32mm x0.25µm



Instrument : ECD_D
 Client Sampled : PTOXICC1000
 Manual Integrations APPROVED
 Reviewed By : Abdul Mirza 03/13/2024
 Supervised By : Ankita Jodhani 03/13/2024