

Data Path : Z:\pestpcbsrv\HPCHEM1\ECD_D\Data\PD031319\
 Data File : PD051788.D
 Signal(s) : Signal #1: ECD1A.CH Signal #2: ECD2B.CH
 Acq On : 13 Mar 2019 16:32
 Operator : AJ\SJ
 Sample : PEM06
 Misc :
 ALS Vial : 3 Sample Multiplier: 1

Instrument :
 ECD_D
 ClientSampleId :
 PEM06

Integration File signal 1: autoint1.e
 Integration File signal 2: autoint2.e
 Quant Time: Mar 14 01:25:07 2019
 Quant Method : Z:\pestpcbsrv\HPCHEM1\ECD_D\Method\PD022219CLP.M
 Quant Title : GC Extractables
 QLast Update : Fri Feb 22 04:35:08 2019
 Response via : Initial Calibration
 Integrator: ChemStation 6890 Scale Mode: Large solvent peaks clipped

Volume Inj. : 1 µl
 Signal #1 Phase : ZB-MR2 Signal #2 Phase: ZB-MR1
 Signal #1 Info : 30M x 0.32mm x0.2 Signal #2 Info : 30M x 0.32mm x 0.50µm

Compound	RT#1	RT#2	Resp#1	Resp#2	ng/ml	ng/ml

System Monitoring Compounds						
1) SA Tetrachlo...	3.222	4.043	27678090	620.8E6	19.261	20.094
27) SA Decachlor...	7.821	9.153	23496897	354.3E6	19.538	18.692
Target Compounds						
2) A alpha-BHC	3.642	4.435	19864131	483.3E6	8.962	10.345
3) MA gamma-BHC...	3.911	4.722	21697448	433.8E6	10.308	10.155
4) MA Heptachlor	4.157f	0.000	8955833	0	4.118	N.D. #
6) B beta-BHC	4.157	4.892	8955833	200.8E6	9.367	10.120
14) MA Endrin	5.652	6.766	98835750	1236.7E6	48.518	46.790
15) B Endosulfa...	0.000	6.910f	0	26659943	N.D.	0.971
16) A 4,4'-DDD	0.000	6.910	0	26659943	N.D.	1.018
17) MA 4,4'-DDT	6.023	7.186	181.6E6	2052.9E6	99.728	89.010
18) B Endrin al...	6.023f	7.098	181.6E6	13435751	110.749	0.598 #
20) A Methoxychlor	6.569	7.645	239.5E6	2483.8E6	259.325	234.630
21) B Endrin ke...	0.000	7.795	0	16295976	N.D.	0.683
23) Toxaphene-2	5.652	0.000	98835750	0	4320.550	N.D. #
24) Toxaphene-3	6.023	7.186	181.6E6	2052.9E6	4773.266	8445.066 #
25) Toxaphene-4	0.000	7.186	0	2052.9E6	N.D.	3056.801
26) Toxaphene-5	0.000	7.795	0	16295976	N.D.	56.624

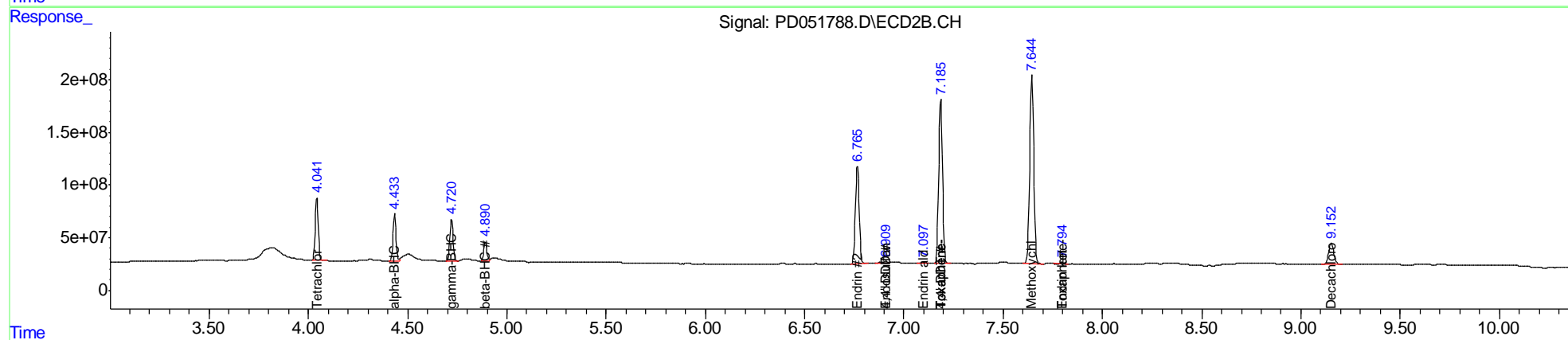
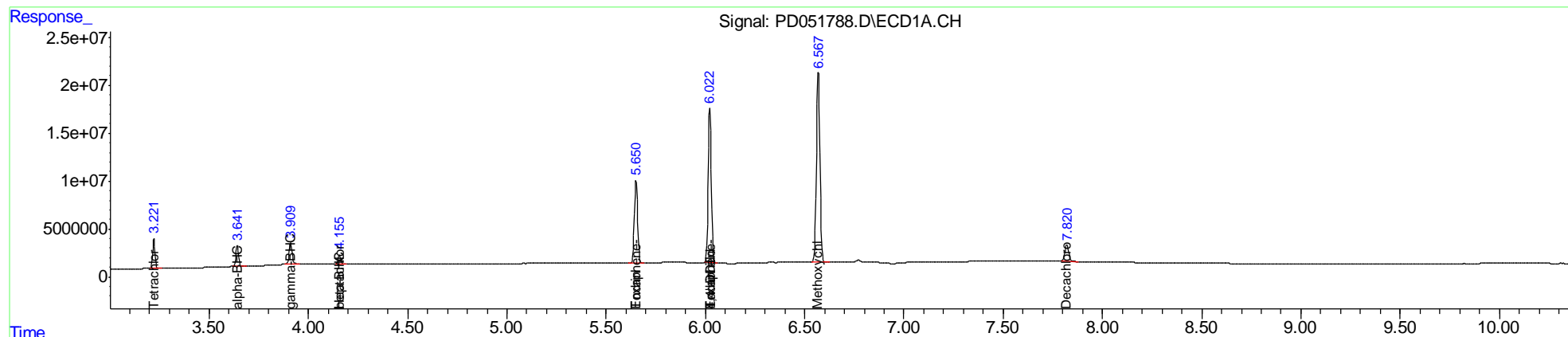
(f)=RT Delta > 1/2 Window (#)=Amounts differ by > 25% (m)=manual int.

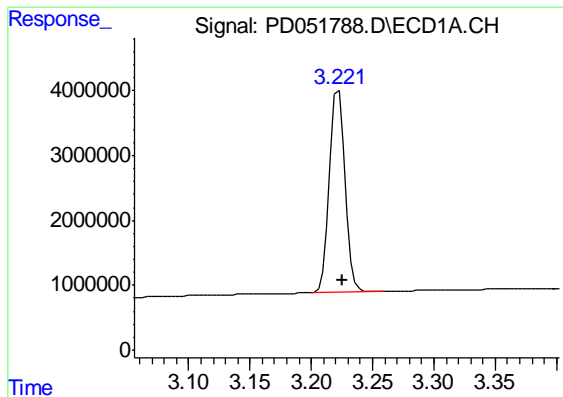
Data Path : Z:\pestpcbsrv\HPCHEM1\ECD_D\Data\PD031319\
 Data File : PD051788.D
 Signal(s) : Signal #1: ECD1A.CH Signal #2: ECD2B.CH
 Acq On : 13 Mar 2019 16:32
 Operator : AJ\SJ
 Sample : PEM06
 Misc :
 ALS Vial : 3 Sample Multiplier: 1

Instrument :
 ECD_D
 ClientSampleId :
 PEM06

Integration File signal 1: autoint1.e
 Integration File signal 2: autoint2.e
 Quant Time: Mar 14 01:25:07 2019
 Quant Method : Z:\pestpcbsrv\HPCHEM1\ECD_D\Method\PD022219CLP.M
 Quant Title : GC Extractables
 QLast Update : Fri Feb 22 04:35:08 2019
 Response via : Initial Calibration
 Integrator: ChemStation 6890 Scale Mode: Large solvent peaks clipped

Volume Inj. : 1 µl
 Signal #1 Phase : ZB-MR2 Signal #2 Phase: ZB-MR1
 Signal #1 Info : 30M x 0.32mm x0.2 Signal #2 Info : 30M x 0.32mm x 0.50µm

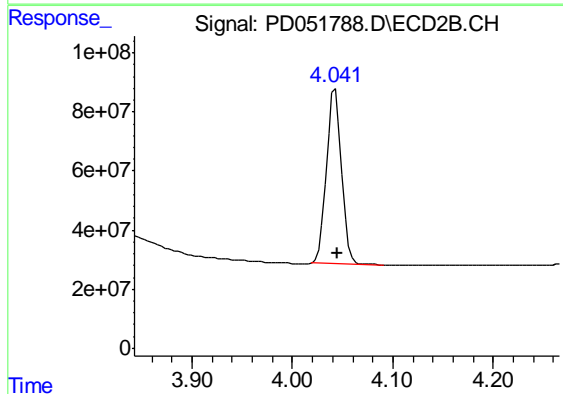




#1 Tetrachloro-m-xylene

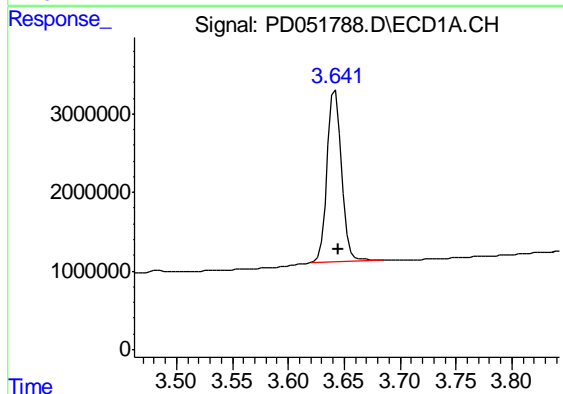
R.T.: 3.222 min
 Delta R.T.: -0.003 min
 Response: 27678090
 Conc: 19.26 ng/ml

Instrument :
 ECD_D
 ClientSampled :
 PEM06



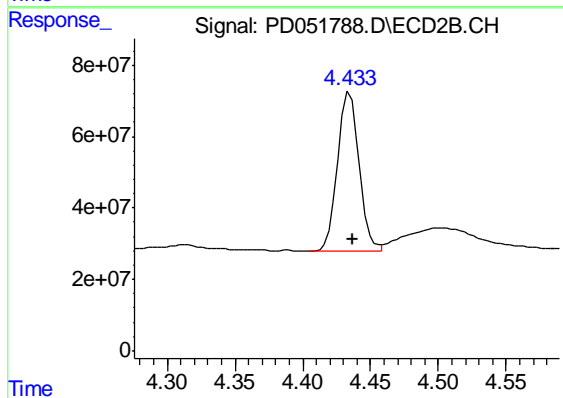
#1 Tetrachloro-m-xylene

R.T.: 4.043 min
 Delta R.T.: -0.002 min
 Response: 620815925
 Conc: 20.09 ng/ml



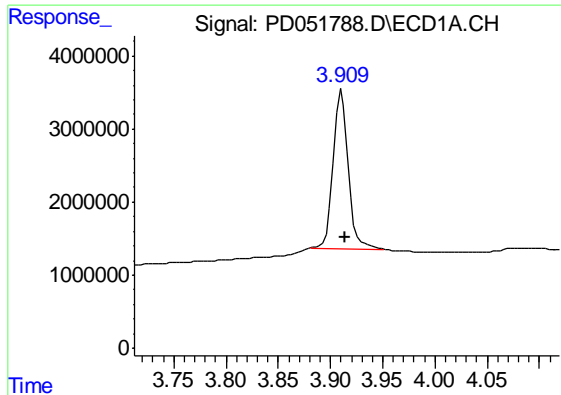
#2 alpha-BHC

R.T.: 3.642 min
 Delta R.T.: -0.002 min
 Response: 19864131
 Conc: 8.96 ng/ml



#2 alpha-BHC

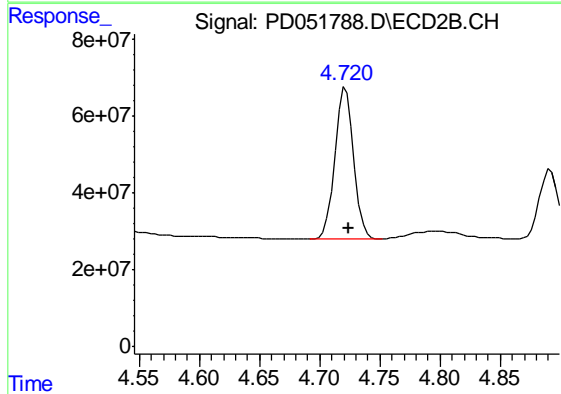
R.T.: 4.435 min
 Delta R.T.: -0.003 min
 Response: 483338125
 Conc: 10.34 ng/ml



#3 gamma-BHC (Lindane)

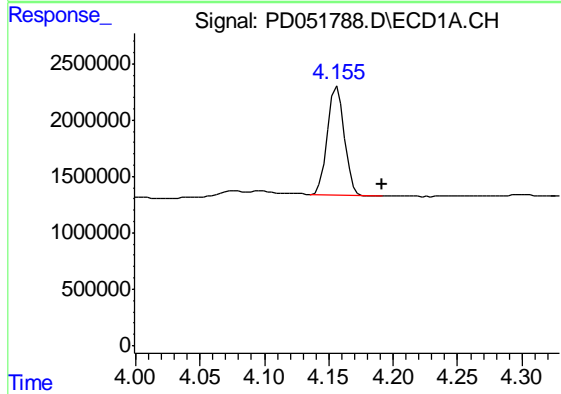
R.T.: 3.911 min
 Delta R.T.: -0.003 min
 Response: 21697448
 Conc: 10.31 ng/ml

Instrument :
 ECD_D
 ClientSampled :
 PEM06



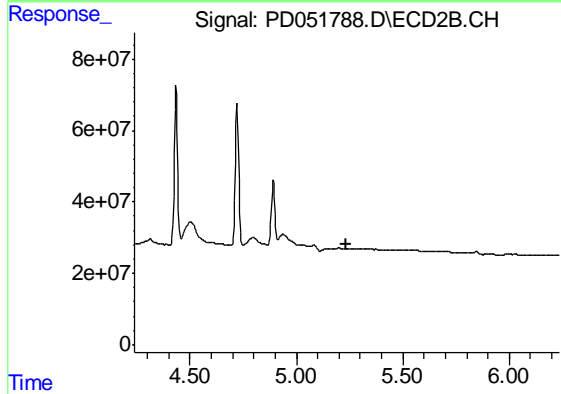
#3 gamma-BHC (Lindane)

R.T.: 4.722 min
 Delta R.T.: -0.003 min
 Response: 433829207
 Conc: 10.16 ng/ml



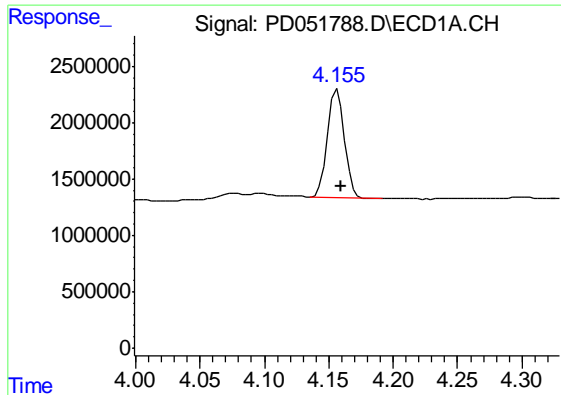
#4 Heptachlor

R.T.: 4.157 min
 Delta R.T.: -0.034 min
 Response: 8955833
 Conc: 4.12 ng/ml



#4 Heptachlor

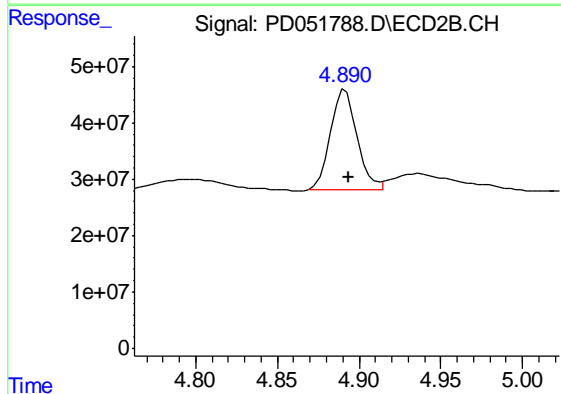
R.T.: 0.000 min
 Exp R.T. : 5.238 min
 Response: 0
 Conc: N.D.



#6 beta-BHC

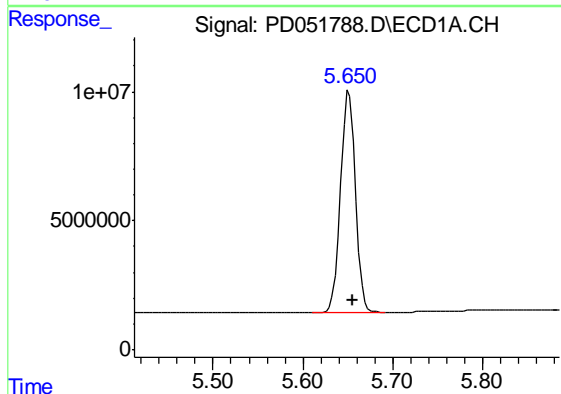
R.T.: 4.157 min
 Delta R.T.: -0.003 min
 Response: 8955833
 Conc: 9.37 ng/ml

Instrument :
 ECD_D
 ClientSampled :
 PEM06



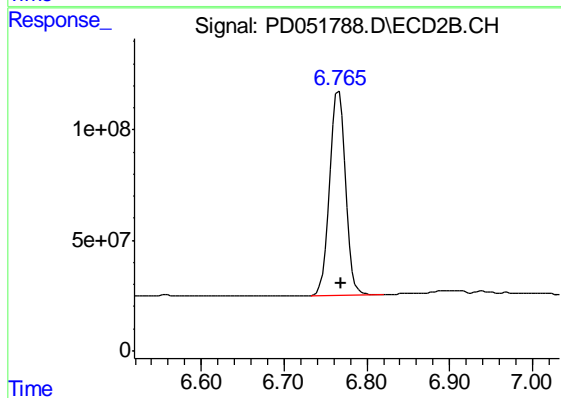
#6 beta-BHC

R.T.: 4.892 min
 Delta R.T.: -0.002 min
 Response: 200796617
 Conc: 10.12 ng/ml



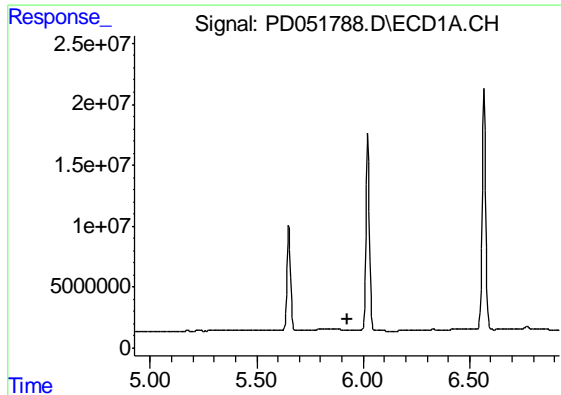
#14 Endrin

R.T.: 5.652 min
 Delta R.T.: -0.003 min
 Response: 98835750
 Conc: 48.52 ng/ml



#14 Endrin

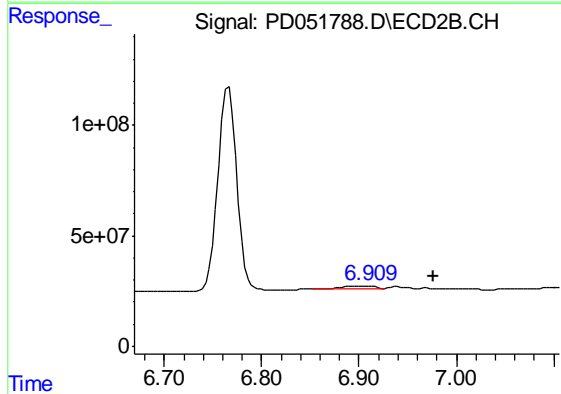
R.T.: 6.766 min
 Delta R.T.: -0.003 min
 Response: 1236724809
 Conc: 46.79 ng/ml



#15 Endosulfan II

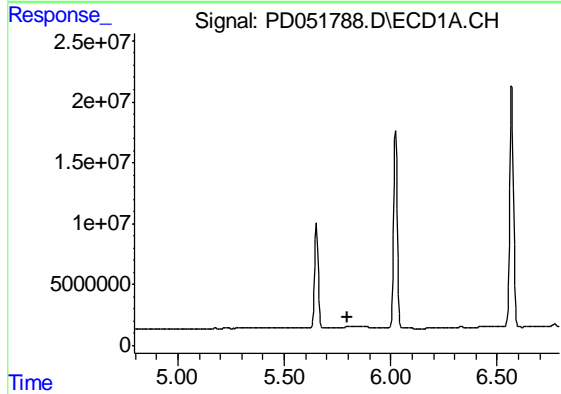
R.T.: 0.000 min
 Exp R.T. : 5.925 min
 Response: 0
 Conc: N.D.

Instrument :
 ECD_D
 ClientSampled :
 PEM06



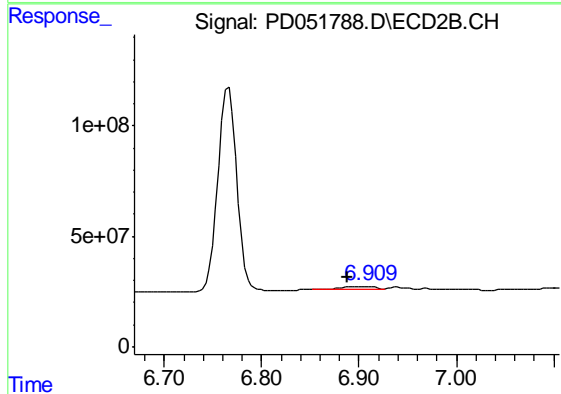
#15 Endosulfan II

R.T.: 6.910 min
 Delta R.T.: -0.067 min
 Response: 26659943
 Conc: 0.97 ng/ml



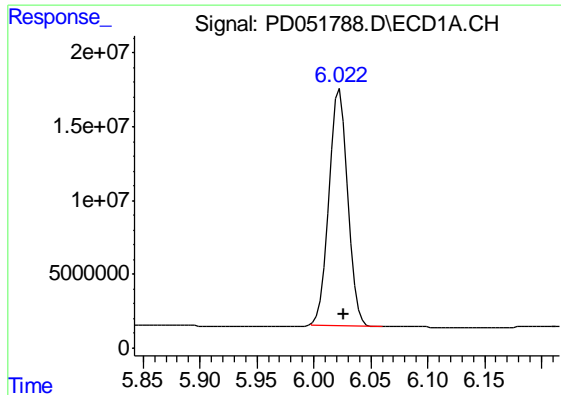
#16 4,4'-DDD

R.T.: 0.000 min
 Exp R.T. : 5.795 min
 Response: 0
 Conc: N.D.



#16 4,4'-DDD

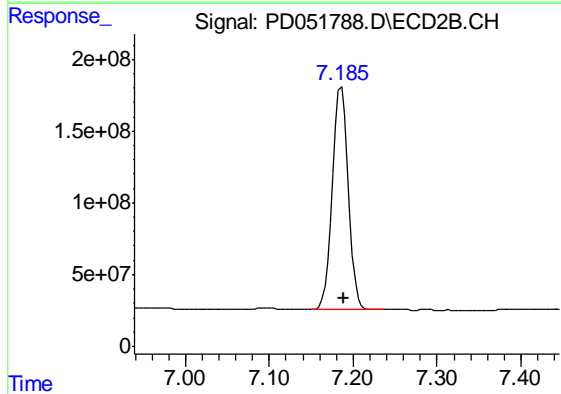
R.T.: 6.910 min
 Delta R.T.: 0.022 min
 Response: 26659943
 Conc: 1.02 ng/ml



#17 4,4'-DDT

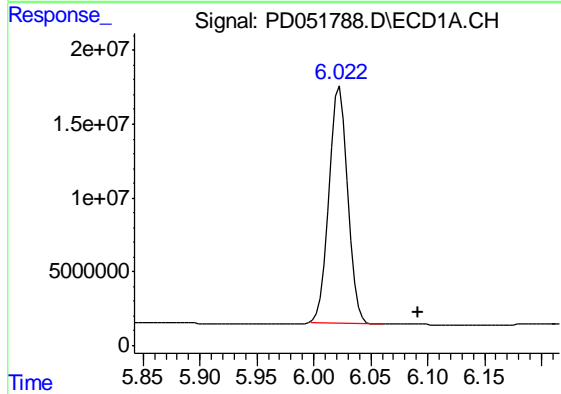
R.T.: 6.023 min
 Delta R.T.: -0.004 min
 Response: 181608950
 Conc: 99.73 ng/ml

Instrument :
 ECD_D
 ClientSampled :
 PEM06



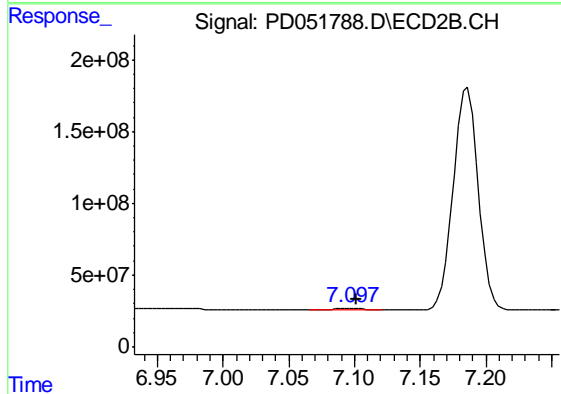
#17 4,4'-DDT

R.T.: 7.186 min
 Delta R.T.: -0.003 min
 Response: 2052861330
 Conc: 89.01 ng/ml



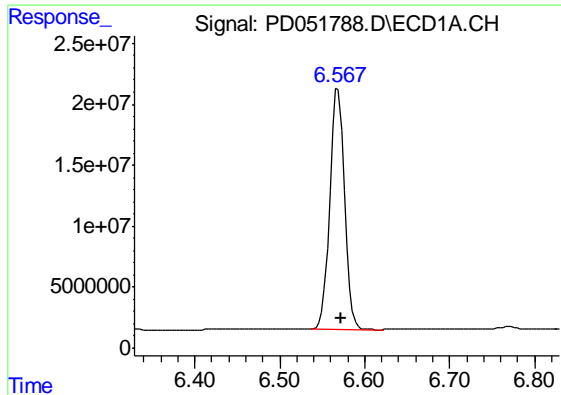
#18 Endrin aldehyde

R.T.: 6.023 min
 Delta R.T.: -0.069 min
 Response: 181608950
 Conc: 110.75 ng/ml



#18 Endrin aldehyde

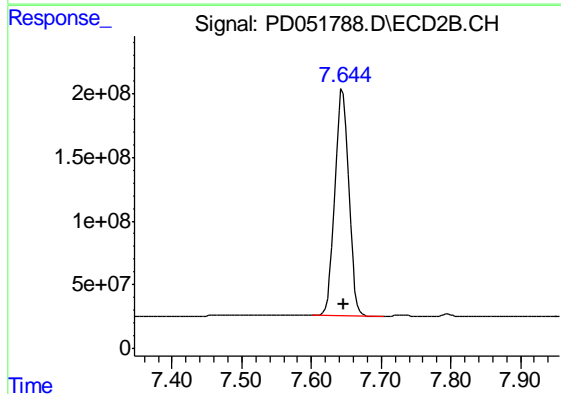
R.T.: 7.098 min
 Delta R.T.: -0.003 min
 Response: 13435751
 Conc: 0.60 ng/ml



#20 Methoxychlor

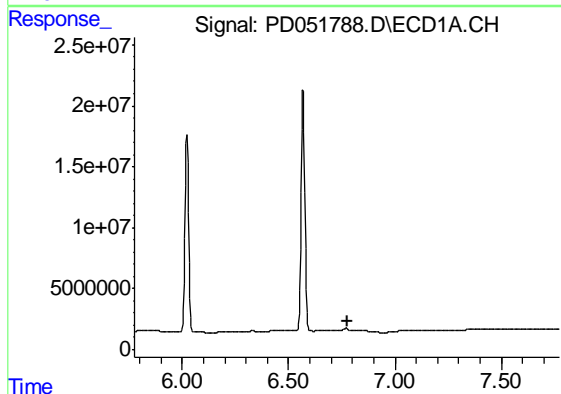
R.T.: 6.569 min
 Delta R.T.: -0.004 min
 Response: 239484909
 Conc: 259.32 ng/ml

Instrument :
 ECD_D
 ClientSampleId :
 PEM06



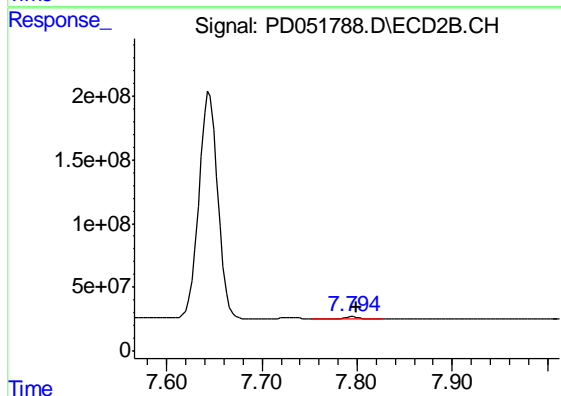
#20 Methoxychlor

R.T.: 7.645 min
 Delta R.T.: -0.002 min
 Response: 2483768784
 Conc: 234.63 ng/ml



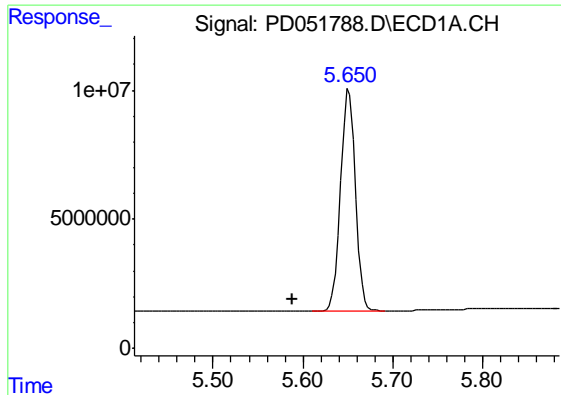
#21 Endrin ketone

R.T.: 0.000 min
 Exp R.T. : 6.775 min
 Response: 0
 Conc: N.D.



#21 Endrin ketone

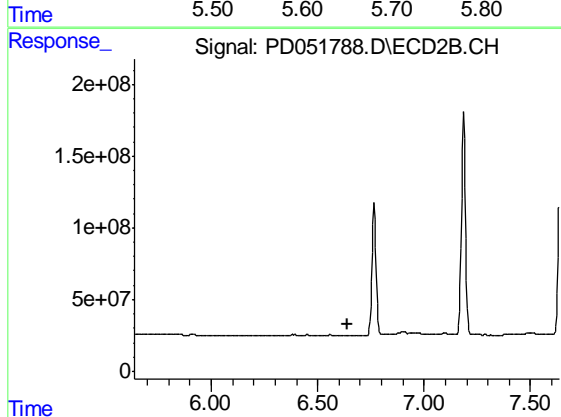
R.T.: 7.795 min
 Delta R.T.: -0.004 min
 Response: 16295976
 Conc: 0.68 ng/ml



#23 Toxaphene-2

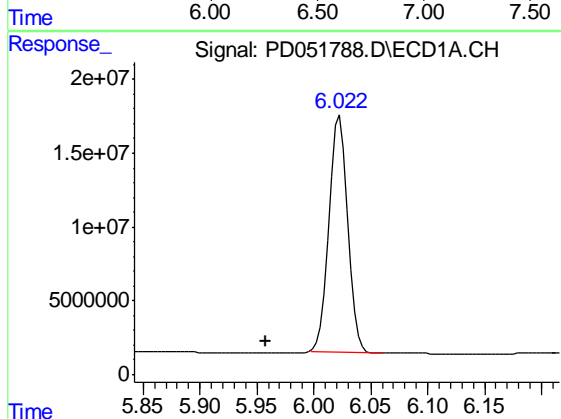
R.T.: 5.652 min
 Delta R.T.: 0.063 min
 Response: 98835750
 Conc: 4320.55 ng/ml

Instrument :
 ECD_D
 ClientSampleId :
 PEM06



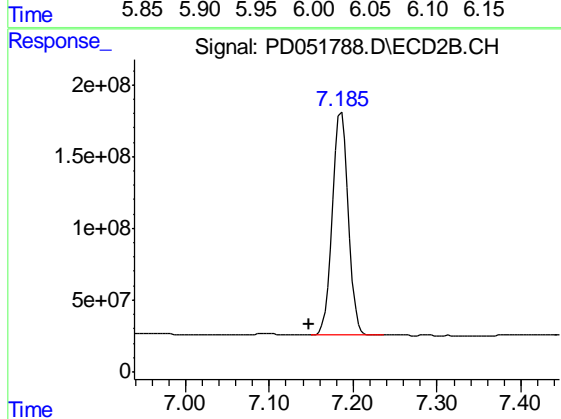
#23 Toxaphene-2

R.T.: 0.000 min
 Exp R.T. : 6.638 min
 Response: 0
 Conc: N.D.



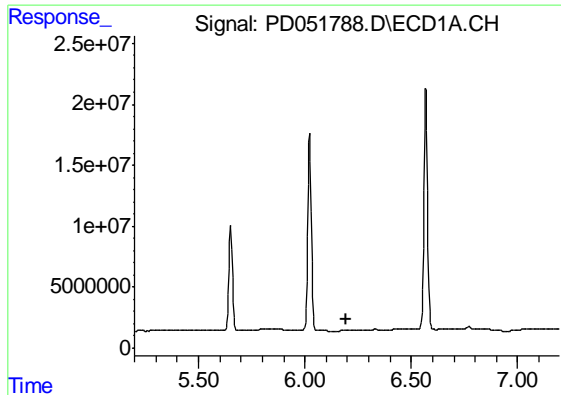
#24 Toxaphene-3

R.T.: 6.023 min
 Delta R.T.: 0.065 min
 Response: 181608950
 Conc: 4773.27 ng/ml



#24 Toxaphene-3

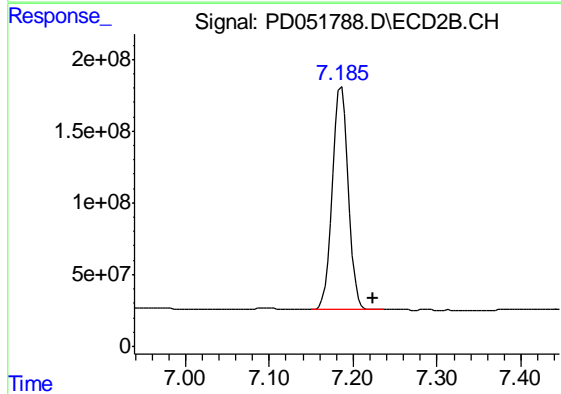
R.T.: 7.186 min
 Delta R.T.: 0.038 min
 Response: 2052861330
 Conc: 8445.07 ng/ml



#25 Toxaphene-4

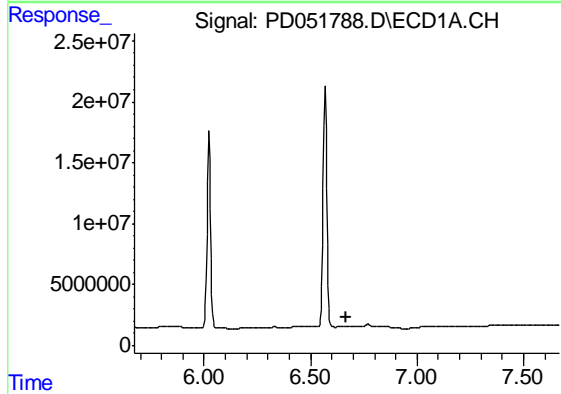
R.T.: 0.000 min
 Exp R.T. : 6.197 min
 Response: 0
 Conc: N.D.

Instrument :
 ECD_D
 ClientSampled :
 PEM06



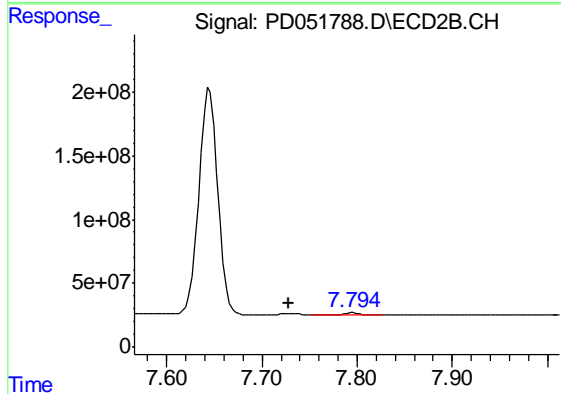
#25 Toxaphene-4

R.T.: 7.186 min
 Delta R.T.: -0.038 min
 Response: 2052861330
 Conc: 3056.80 ng/ml



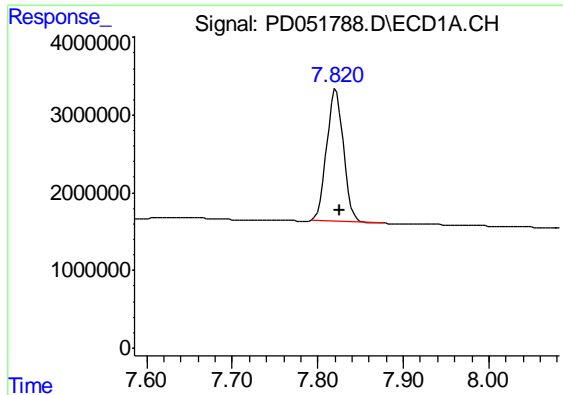
#26 Toxaphene-5

R.T.: 0.000 min
 Exp R.T. : 6.670 min
 Response: 0
 Conc: N.D.



#26 Toxaphene-5

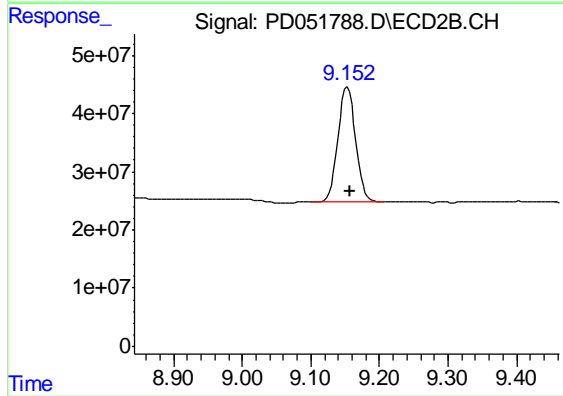
R.T.: 7.795 min
 Delta R.T.: 0.068 min
 Response: 16295976
 Conc: 56.62 ng/ml



#27 Decachlorobiphenyl

R.T.: 7.821 min
Delta R.T.: -0.004 min
Response: 23496897
Conc: 19.54 ng/ml

Instrument :
ECD_D
ClientSampleId :
PEM06



#27 Decachlorobiphenyl

R.T.: 9.153 min
Delta R.T.: -0.004 min
Response: 354349371
Conc: 18.69 ng/ml