

Data Path : Z:\pestpcbsrv\HPCHEM1\ECD_D\Data\PD031319\
 Data File : PD051789.D
 Signal(s) : Signal #1: ECD1A.CH Signal #2: ECD2B.CH
 Acq On : 13 Mar 2019 17:38
 Operator : AJ\SJ
 Sample : PB117837BS
 Misc :
 ALS Vial : 4 Sample Multiplier: 1

Instrument :
 ECD_D
 ClientSampleId :
 PLCS37

Integration File signal 1: autoint1.e
 Integration File signal 2: autoint2.e
 Quant Time: Mar 14 01:25:22 2019
 Quant Method : Z:\pestpcbsrv\HPCHEM1\ECD_D\Method\PD022219CLP.M
 Quant Title : GC Extractables
 QLast Update : Fri Feb 22 04:35:08 2019
 Response via : Initial Calibration
 Integrator: ChemStation 6890 Scale Mode: Large solvent peaks clipped

Volume Inj. : 1 µl
 Signal #1 Phase : ZB-MR2 Signal #2 Phase: ZB-MR1
 Signal #1 Info : 30M x 0.32mm x0.2 Signal #2 Info : 30M x 0.32mm x 0.50µm

Compound	RT#1	RT#2	Resp#1	Resp#2	ng/ml	ng/ml

System Monitoring Compounds						
1) SA Tetrachlo...	3.229	4.044	27541641	568.7E6	19.166	18.406
27) SA Decachlor...	7.832	9.163	43576034	630.0E6	36.234	33.234
Target Compounds						
3) MA gamma-BHC...	3.919	4.725	96740200	1722.1E6	45.958	40.311
5) MB Aldrin	0.000	5.545	0	20881387	N.D.	0.528
8) B Heptachlo...	4.857	5.933	109.8E6	1606.3E6	52.090	44.863
10) B trans-Chl...	5.075	6.169	111.3E6	1613.9E6	51.032	44.672
11) B cis-Chlor...	5.075f	0.000	111.3E6	0	52.056	N.D. #
12) B 4,4'-DDE	5.301	6.398	230.0E6	2972.1E6	106.911	90.962
13) MA Dieldrin	5.415	6.551	244.4E6	3010.1E6	105.577	90.424
14) MA Endrin	5.661	6.770	224.4E6	2494.0E6	110.165	94.357
18) B Endrin al...	0.000	7.103	0	17029652	N.D.	0.758
19) B Endosulfa...	6.307	7.329	122.5E6	1545.2E6	66.335	60.865
21) B Endrin ke...	6.780	7.801	4150352	21186017	2.043	0.888 #
22) Toxaphene-1	0.000	6.398	0	2972.1E6	N.D.	19778.068
24) Toxaphene-3	0.000	7.103	0	17029652	N.D.	70.057

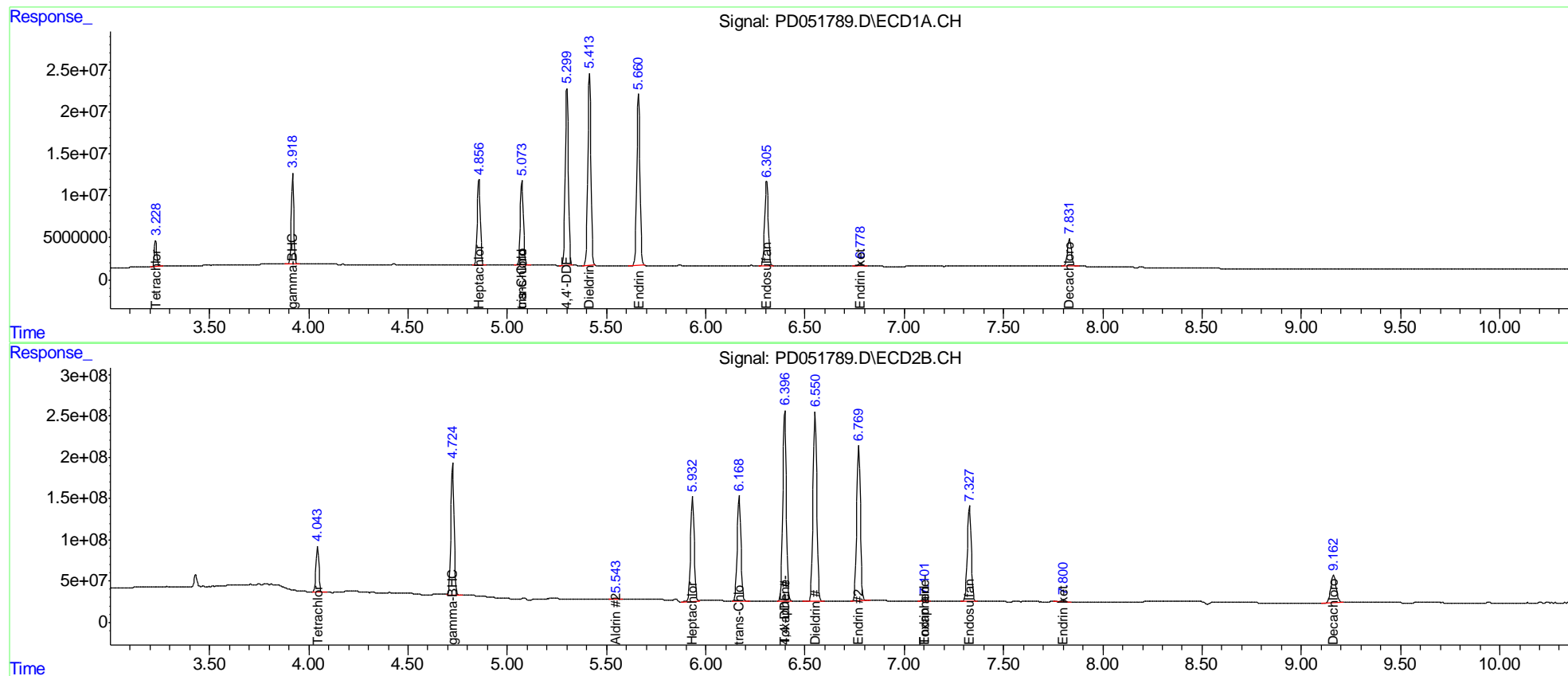
(f)=RT Delta > 1/2 Window (#)=Amounts differ by > 25% (m)=manual int.

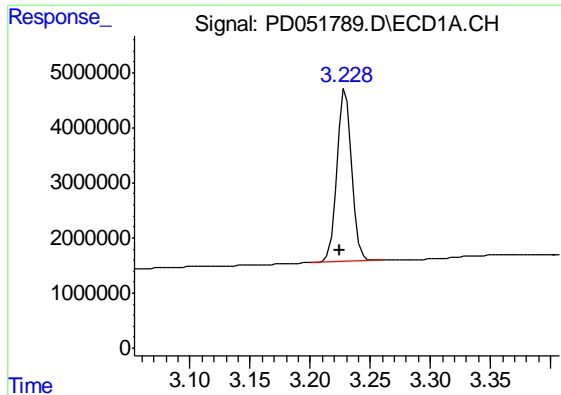
Data Path : Z:\pestpcbsrv\HPCHEM1\ECD_D\Data\PD031319\
 Data File : PD051789.D
 Signal(s) : Signal #1: ECD1A.CH Signal #2: ECD2B.CH
 Acq On : 13 Mar 2019 17:38
 Operator : AJ\SJ
 Sample : PB117837BS
 Misc :
 ALS Vial : 4 Sample Multiplier: 1

Instrument :
 ECD_D
 Client Sample Id :
 PLCS37

Integration File signal 1: autoint1.e
 Integration File signal 2: autoint2.e
 Quant Time: Mar 14 01:25:22 2019
 Quant Method : Z:\pestpcbsrv\HPCHEM1\ECD_D\Method\PD022219CLP.M
 Quant Title : GC Extractables
 QLast Update : Fri Feb 22 04:35:08 2019
 Response via : Initial Calibration
 Integrator: ChemStation 6890 Scale Mode: Large solvent peaks clipped

Volume Inj. : 1 µl
 Signal #1 Phase : ZB-MR2 Signal #2 Phase: ZB-MR1
 Signal #1 Info : 30M x 0.32mm x0.2 Signal #2 Info : 30M x 0.32mm x 0.50µm

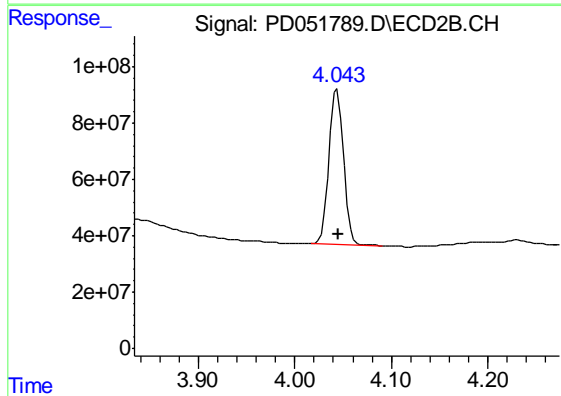




#1 Tetrachloro-m-xylene

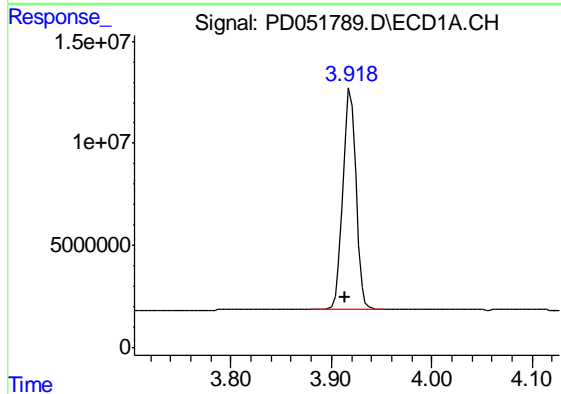
R.T.: 3.229 min
 Delta R.T.: 0.004 min
 Response: 27541641
 Conc: 19.17 ng/ml

Instrument :
 ECD_D
 ClientSampleId :
 PLCS37



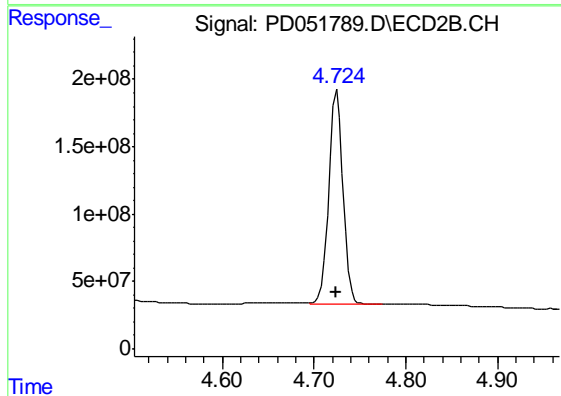
#1 Tetrachloro-m-xylene

R.T.: 4.044 min
 Delta R.T.: 0.000 min
 Response: 568668021
 Conc: 18.41 ng/ml



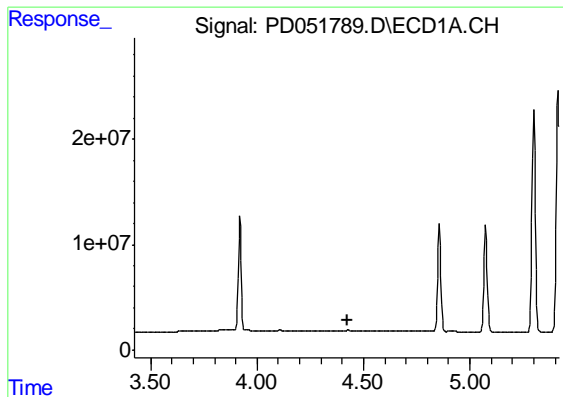
#3 gamma-BHC (Lindane)

R.T.: 3.919 min
 Delta R.T.: 0.006 min
 Response: 96740200
 Conc: 45.96 ng/ml



#3 gamma-BHC (Lindane)

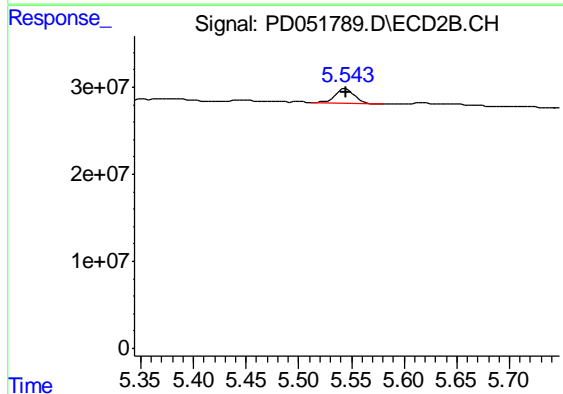
R.T.: 4.725 min
 Delta R.T.: 0.000 min
 Response: 1722065296
 Conc: 40.31 ng/ml



#5 Aldrin

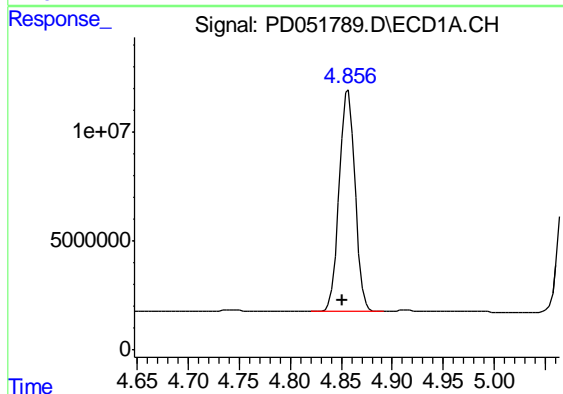
R.T.: 0.000 min
 Exp R.T.: 4.423 min
 Response: 0
 Conc: N.D.

Instrument :
 ECD_D
 ClientSampleId :
 PLCS37



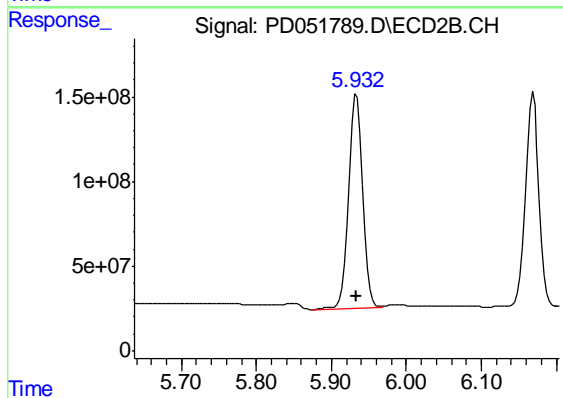
#5 Aldrin

R.T.: 5.545 min
 Delta R.T.: 0.000 min
 Response: 20881387
 Conc: 0.53 ng/ml



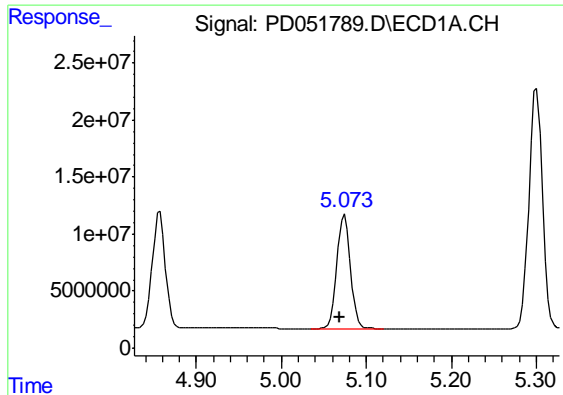
#8 Heptachlor epoxide

R.T.: 4.857 min
 Delta R.T.: 0.006 min
 Response: 109810232
 Conc: 52.09 ng/ml



#8 Heptachlor epoxide

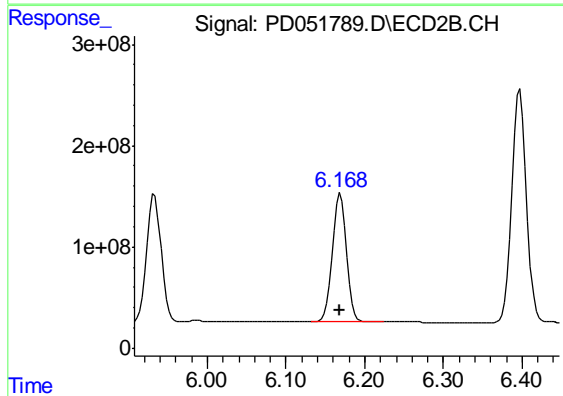
R.T.: 5.933 min
 Delta R.T.: 0.000 min
 Response: 1606314307
 Conc: 44.86 ng/ml



#10 trans-Chlordane

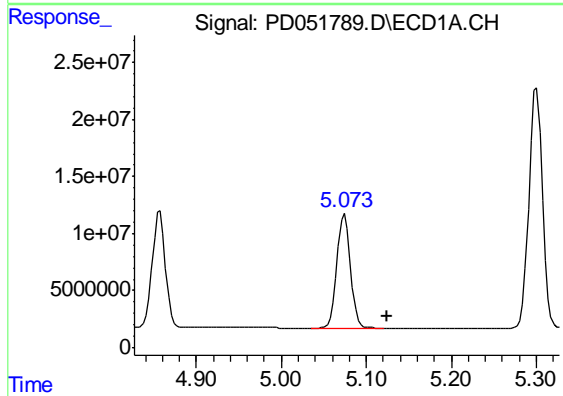
R.T.: 5.075 min
 Delta R.T.: 0.006 min
 Response: 111269586
 Conc: 51.03 ng/ml

Instrument :
 ECD_D
 ClientSampled :
 PLCS37



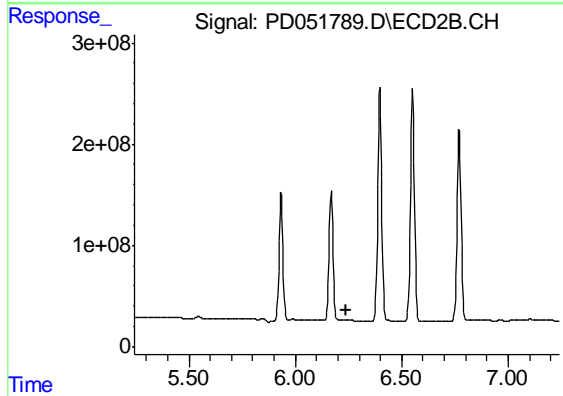
#10 trans-Chlordane

R.T.: 6.169 min
 Delta R.T.: 0.000 min
 Response: 1613856216
 Conc: 44.67 ng/ml



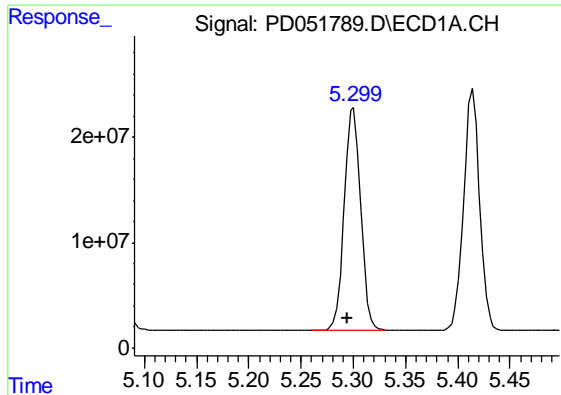
#11 cis-Chlordane

R.T.: 5.075 min
 Delta R.T.: -0.050 min
 Response: 111269586
 Conc: 52.06 ng/ml



#11 cis-Chlordane

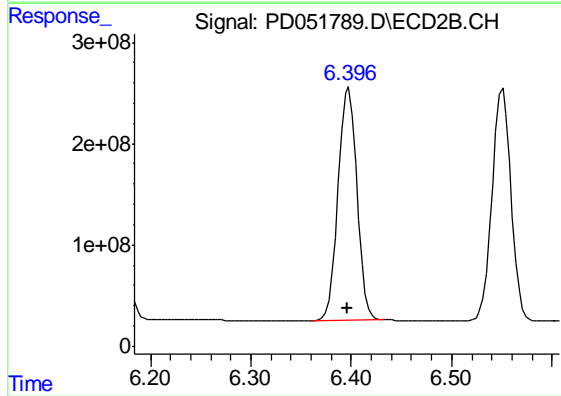
R.T.: 0.000 min
 Exp R.T. : 6.241 min
 Response: 0
 Conc: N.D.



#12 4,4'-DDE

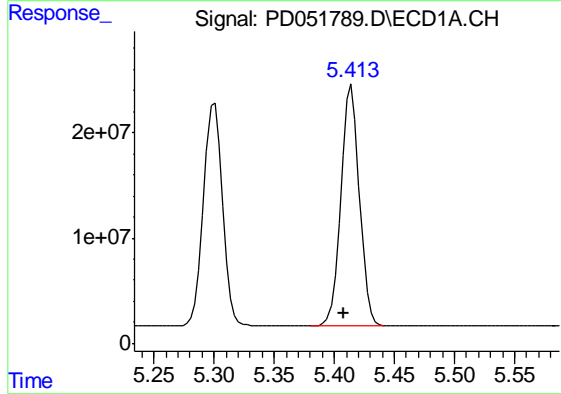
R.T.: 5.301 min
 Delta R.T.: 0.006 min
 Response: 230015107
 Conc: 106.91 ng/ml

Instrument :
 ECD_D
 ClientSampled :
 PLCS37



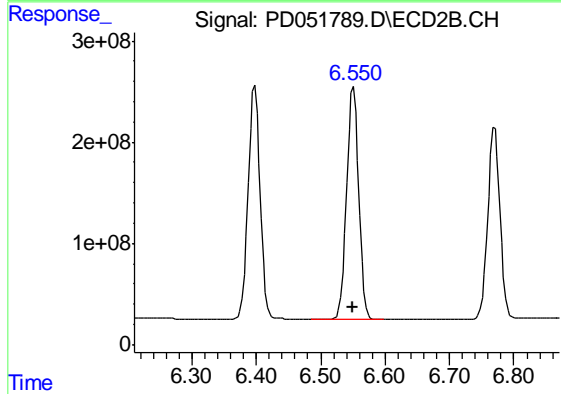
#12 4,4'-DDE

R.T.: 6.398 min
 Delta R.T.: 0.001 min
 Response: 2972115602
 Conc: 90.96 ng/ml



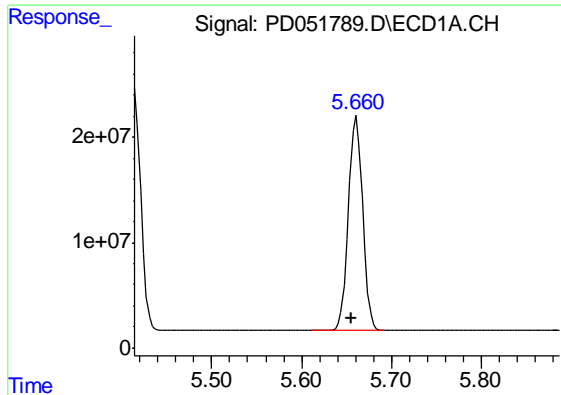
#13 Dieldrin

R.T.: 5.415 min
 Delta R.T.: 0.007 min
 Response: 244384535
 Conc: 105.58 ng/ml



#13 Dieldrin

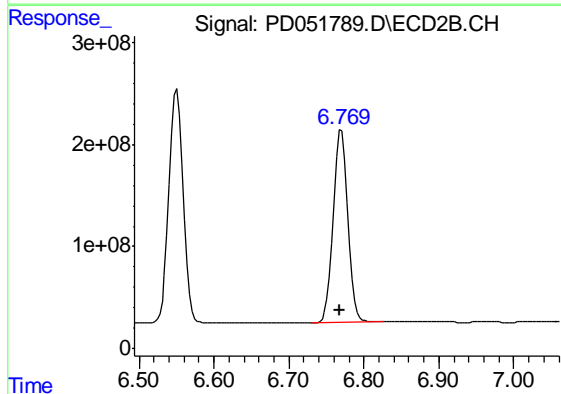
R.T.: 6.551 min
 Delta R.T.: 0.001 min
 Response: 3010060762
 Conc: 90.42 ng/ml



#14 Endrin

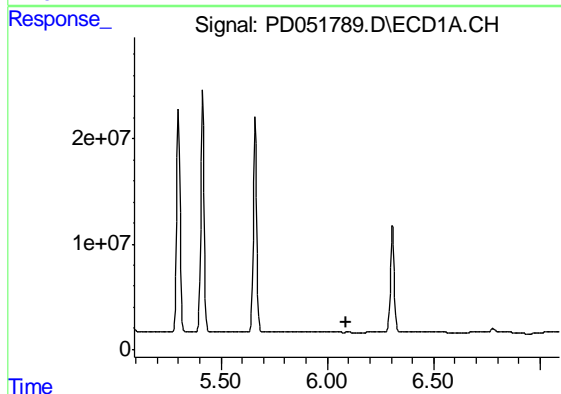
R.T.: 5.661 min
 Delta R.T.: 0.006 min
 Response: 224419134
 Conc: 110.17 ng/ml

Instrument :
 ECD_D
 ClientSampleId :
 PLCS37



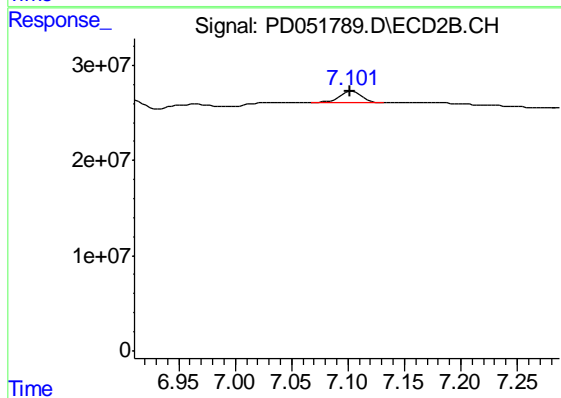
#14 Endrin

R.T.: 6.770 min
 Delta R.T.: 0.002 min
 Response: 2493964141
 Conc: 94.36 ng/ml



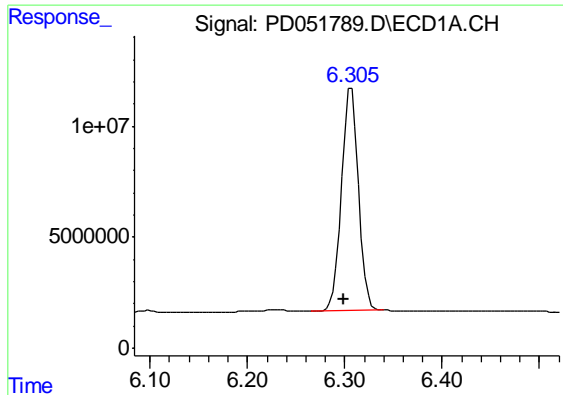
#18 Endrin aldehyde

R.T.: 0.000 min
 Exp R.T. : 6.092 min
 Response: 0
 Conc: N.D.



#18 Endrin aldehyde

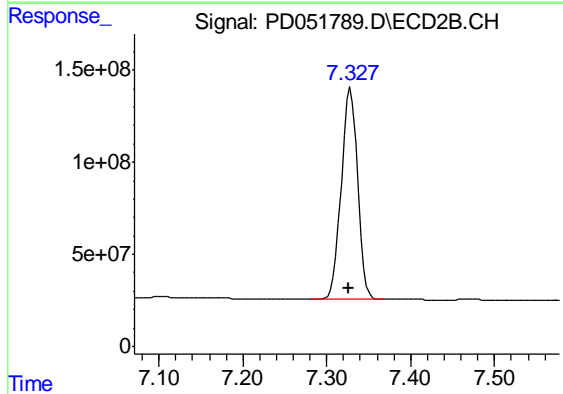
R.T.: 7.103 min
 Delta R.T.: 0.002 min
 Response: 17029652
 Conc: 0.76 ng/ml



#19 Endosulfan Sulfate

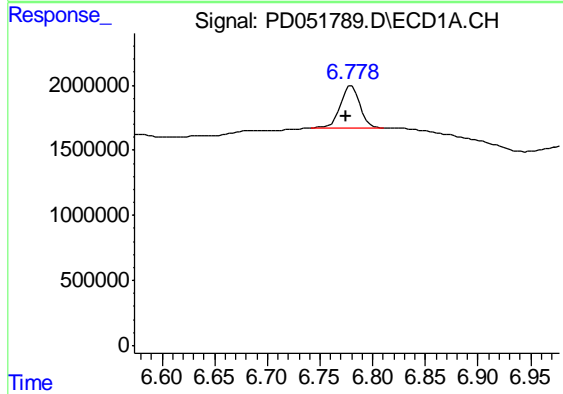
R.T.: 6.307 min
 Delta R.T.: 0.008 min
 Response: 122503997
 Conc: 66.34 ng/ml

Instrument :
 ECD_D
 ClientSampleId :
 PLCS37



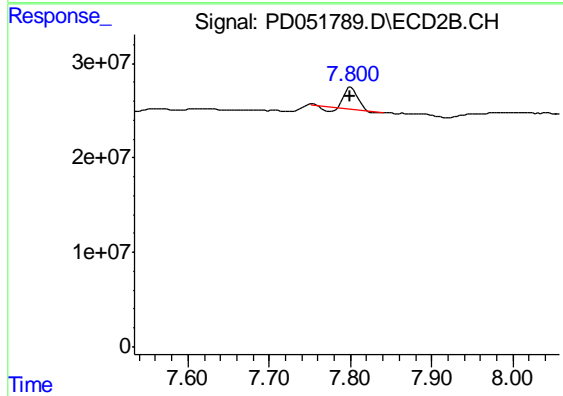
#19 Endosulfan Sulfate

R.T.: 7.329 min
 Delta R.T.: 0.003 min
 Response: 1545222158
 Conc: 60.86 ng/ml



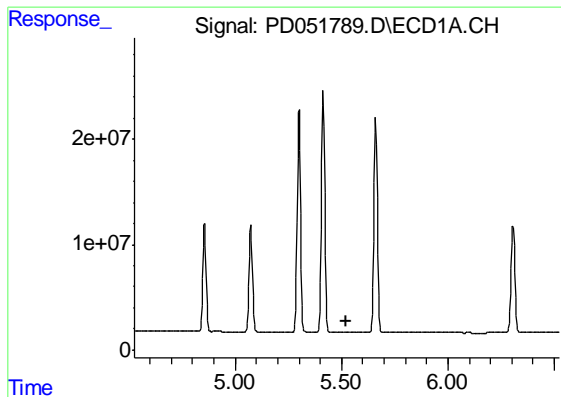
#21 Endrin ketone

R.T.: 6.780 min
 Delta R.T.: 0.005 min
 Response: 4150352
 Conc: 2.04 ng/ml



#21 Endrin ketone

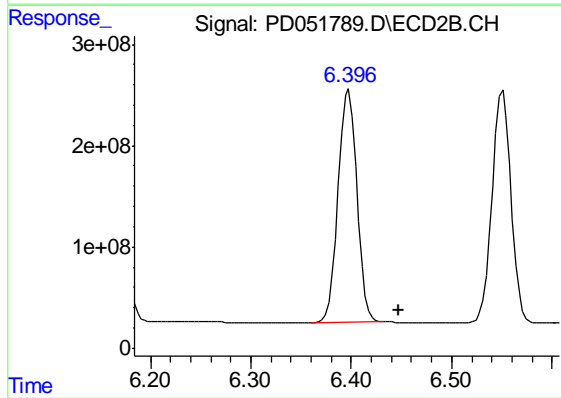
R.T.: 7.801 min
 Delta R.T.: 0.002 min
 Response: 21186017
 Conc: 0.89 ng/ml



#22 Toxaphene-1

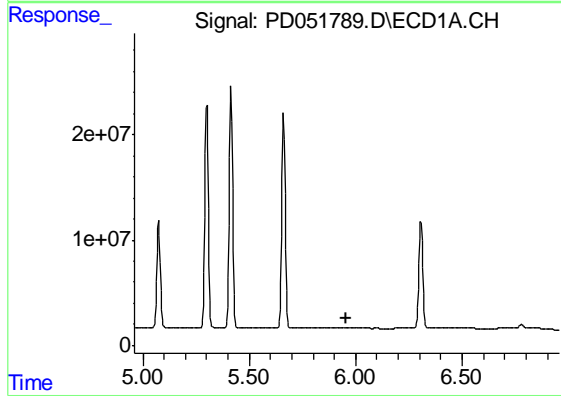
R.T.: 0.000 min
 Exp R.T. : 5.525 min
 Response: 0
 Conc: N.D.

Instrument :
 ECD_D
 ClientSampled :
 PLCS37



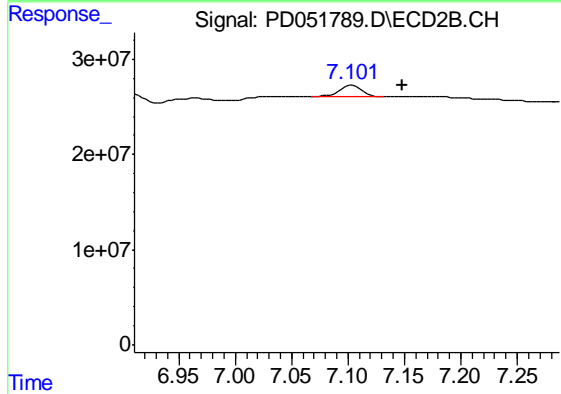
#22 Toxaphene-1

R.T.: 6.398 min
 Delta R.T.: -0.050 min
 Response: 2972115602
 Conc: 19778.07 ng/ml



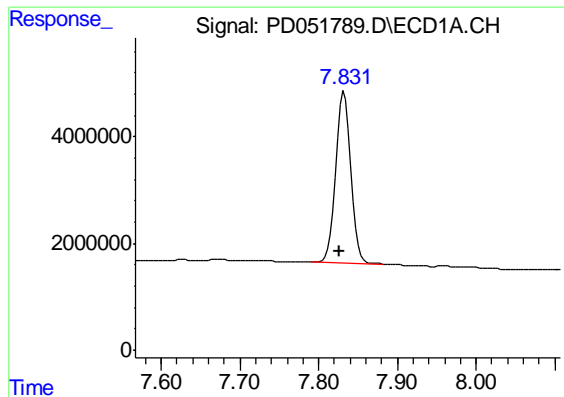
#24 Toxaphene-3

R.T.: 0.000 min
 Exp R.T. : 5.958 min
 Response: 0
 Conc: N.D.



#24 Toxaphene-3

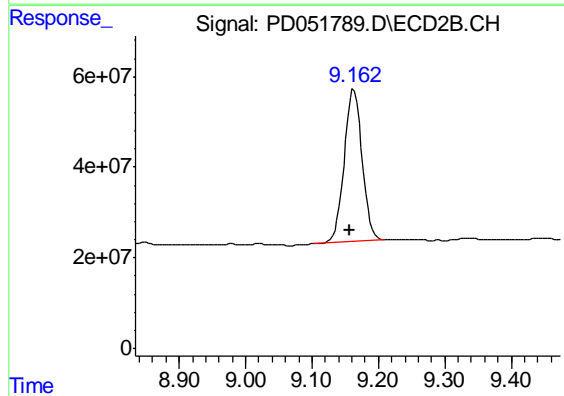
R.T.: 7.103 min
 Delta R.T.: -0.045 min
 Response: 17029652
 Conc: 70.06 ng/ml



#27 Decachlorobiphenyl

R.T.: 7.832 min
Delta R.T.: 0.006 min
Response: 43576034
Conc: 36.23 ng/ml

Instrument :
ECD_D
ClientSampleId :
PLCS37



#27 Decachlorobiphenyl

R.T.: 9.163 min
Delta R.T.: 0.006 min
Response: 630025517
Conc: 33.23 ng/ml