

Data Path : Z:\pestpcbsrv\HPCHEM1\ECD_D\Data\PD031325\
 Data File : PD087959.D
 Signal(s) : Signal #1: ECD1A.ch Signal #2: ECD2B.ch
 Acq On : 12 Mar 2025 15:12
 Operator : AR\AJ
 Sample : PEM
 Misc :
 ALS Vial : 3 Sample Multiplier: 1

Instrument :
 ECD_D
 ClientSampleId :
 PEM

Integration File signal 1: autoint1.e
 Integration File signal 2: autoint2.e
 Quant Time: Mar 18 05:52:49 2025
 Quant Method : Z:\pestpcbsrv\HPCHEM1\ECD_D\Method\PD031325.M
 Quant Title : GC Extractables
 QLast Update : Tue Mar 18 05:48:25 2025
 Response via : Initial Calibration
 Integrator: ChemStation

Volume Inj. : 1 µl
 Signal #1 Phase : ZB-MR1 Signal #2 Phase: ZB-MR2
 Signal #1 Info : 30M x 0.32mm x0.5 Signal #2 Info : 30M x 0.32mm x 0.25µm

Compound	RT#1	RT#2	Resp#1	Resp#2	ng/ml	ng/ml

System Monitoring Compounds						
1) SA Tetrachlo...	3.553	2.884	36517628	282.3E6	20.164	20.763
28) SA Decachlor...	9.080	8.080	63783867	333.0E6	21.367	21.313
Target Compounds						
2) A alpha-BHC	4.002	3.397	36007286	231.8E6	9.091	11.015
3) MA gamma-BHC...	4.333	3.734	34591786	215.1E6	9.177	10.948
6) B beta-BHC	4.517	4.030	15609354	101.2E6	10.328	11.685
14) MA Endrin	6.579	5.795	129.3E6	757.7E6	46.389	45.221
16) A 4,4'-DDD	6.710	5.940	571360	7376301	0.243	0.495 #
17) MA 4,4'-DDT	7.026	6.190	261.2E6	1445.4E6	99.610	93.487
18) B Endrin al...	6.919	6.265	3093424	24918511	1.399	1.979 #
20) A Methoxychlor	7.497	6.761	342.0E6	1641.2E6	242.720	198.563
21) B Endrin ke...	7.634	6.998	4747118	39051306	1.653	2.295 #

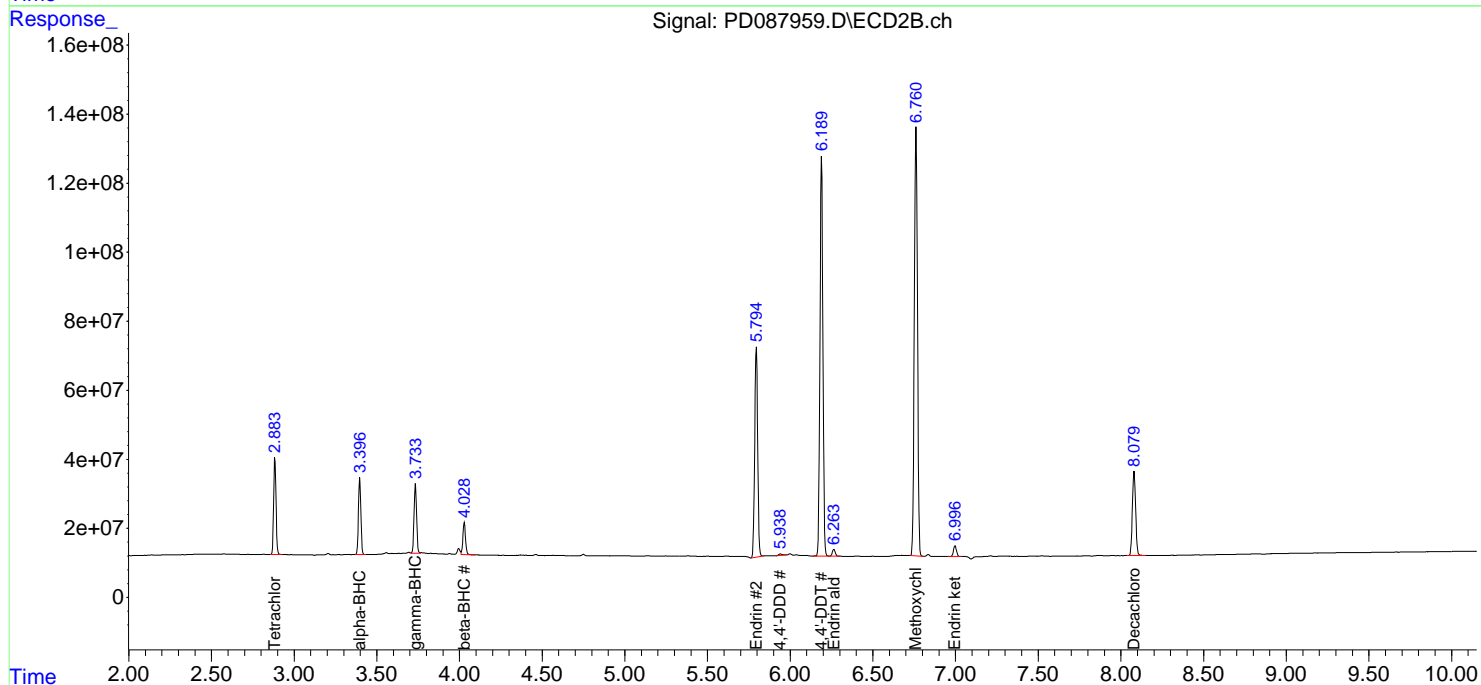
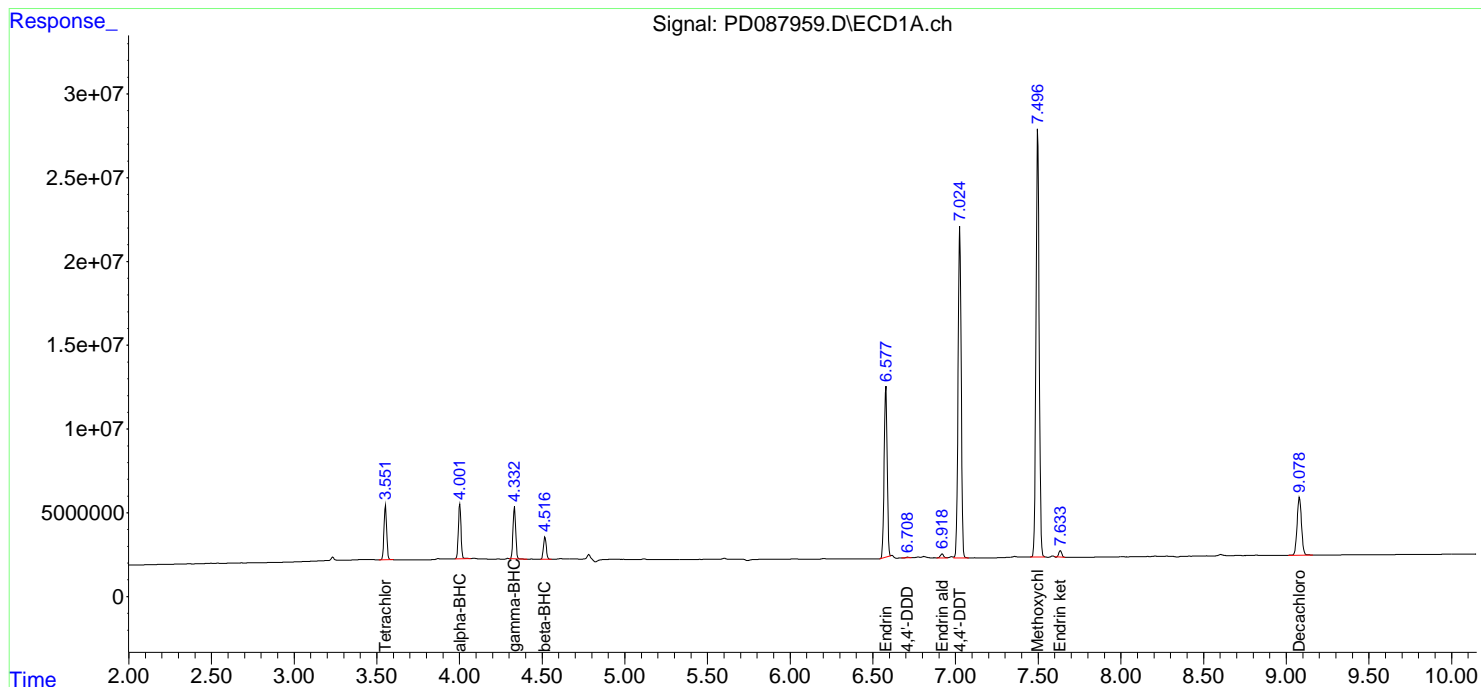
(f)=RT Delta > 1/2 Window (#)=Amounts differ by > 25% (m)=manual int.

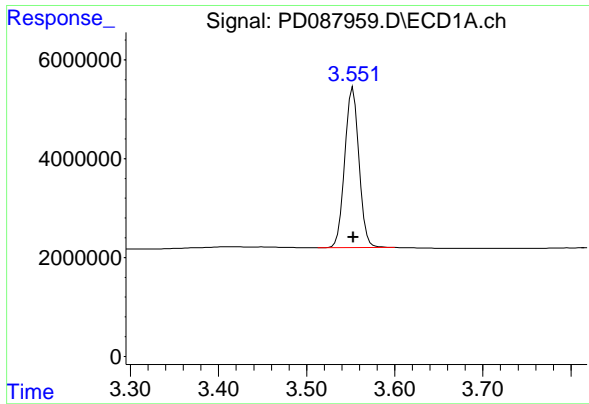
Data Path : Z:\pestpcbsrv\HPCHEM1\ECD_D\Data\PD031325\
 Data File : PD087959.D
 Signal(s) : Signal #1: ECD1A.ch Signal #2: ECD2B.ch
 Acq On : 12 Mar 2025 15:12
 Operator : AR\AJ
 Sample : PEM
 Misc :
 ALS Vial : 3 Sample Multiplier: 1

Instrument :
 ECD_D
 ClientSampleId :
 PEM

Integration File signal 1: autoint1.e
 Integration File signal 2: autoint2.e
 Quant Time: Mar 18 05:52:49 2025
 Quant Method : Z:\pestpcbsrv\HPCHEM1\ECD_D\Method\PD031325.M
 Quant Title : GC Extractables
 QLast Update : Tue Mar 18 05:48:25 2025
 Response via : Initial Calibration
 Integrator: ChemStation

Volume Inj. : 1 µl
 Signal #1 Phase : ZB-MR1 Signal #2 Phase: ZB-MR2
 Signal #1 Info : 30M x 0.32mm x 0.5 Signal #2 Info : 30M x 0.32mm x 0.25µm

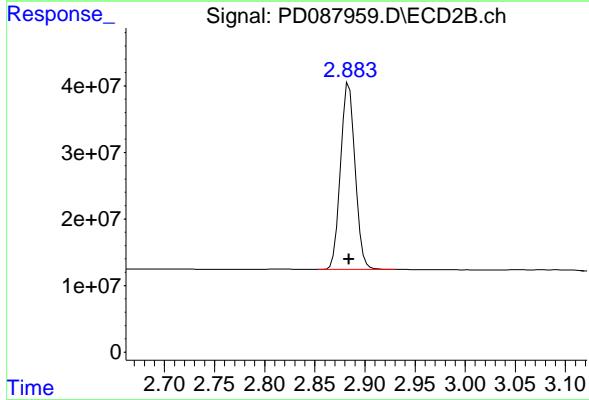




#1 Tetrachloro-m-xylene

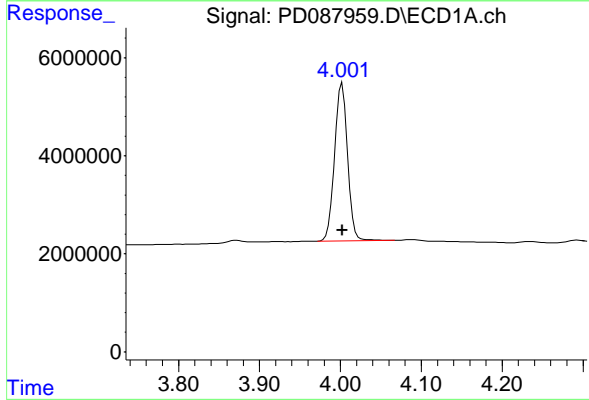
R.T.: 3.553 min
 Delta R.T.: 0.000 min
 Response: 36517628
 Conc: 20.16 ng/ml

Instrument :
 ECD_D
 ClientSampleId :
 PEM



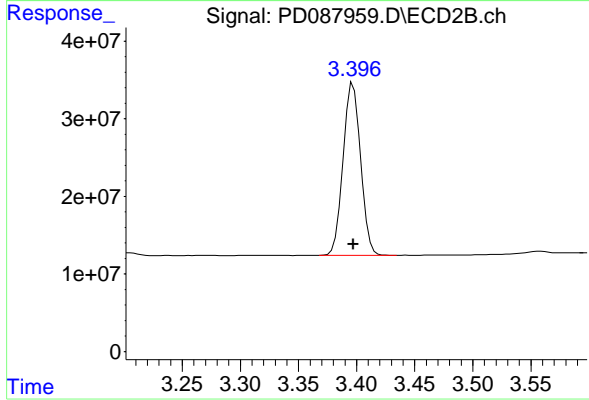
#1 Tetrachloro-m-xylene

R.T.: 2.884 min
 Delta R.T.: 0.000 min
 Response: 282347982
 Conc: 20.76 ng/ml



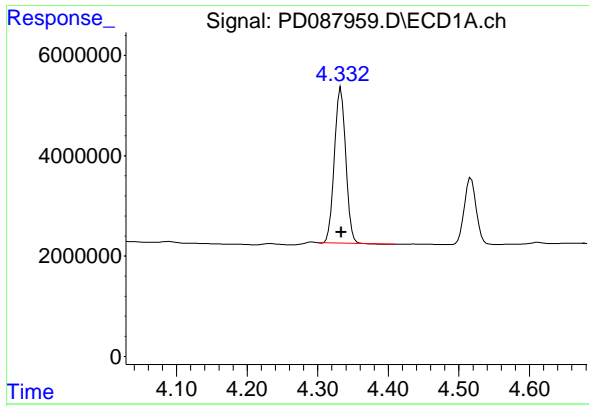
#2 alpha-BHC

R.T.: 4.002 min
 Delta R.T.: 0.000 min
 Response: 36007286
 Conc: 9.09 ng/ml



#2 alpha-BHC

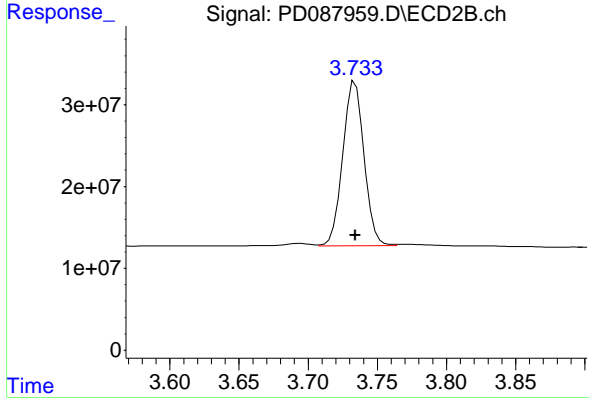
R.T.: 3.397 min
 Delta R.T.: 0.000 min
 Response: 231840661
 Conc: 11.01 ng/ml



#3 gamma-BHC (Lindane)

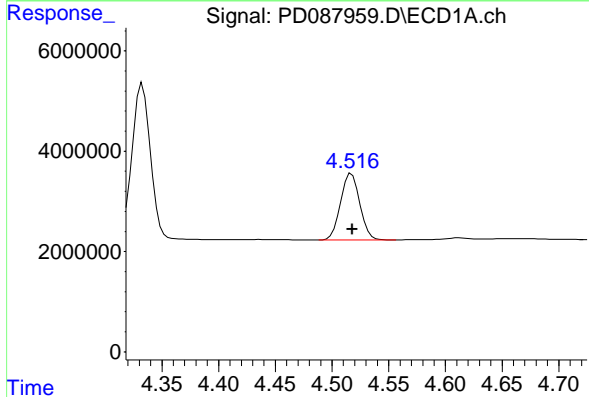
R.T.: 4.333 min
 Delta R.T.: 0.000 min
 Response: 34591786
 Conc: 9.18 ng/ml

Instrument :
 ECD_D
 ClientSampleId :
 PEM



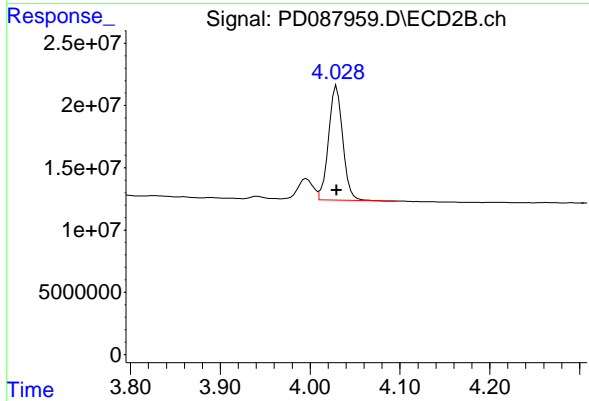
#3 gamma-BHC (Lindane)

R.T.: 3.734 min
 Delta R.T.: 0.000 min
 Response: 215141314
 Conc: 10.95 ng/ml



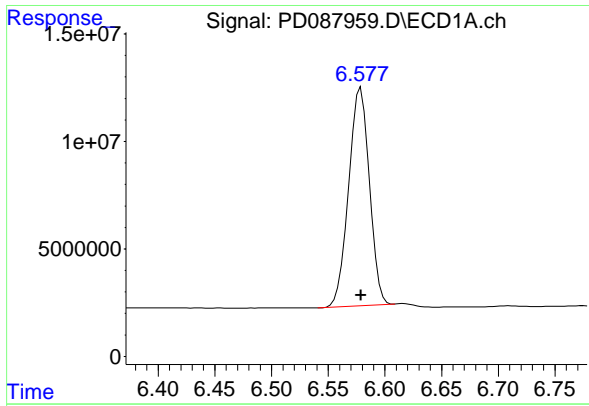
#6 beta-BHC

R.T.: 4.517 min
 Delta R.T.: 0.000 min
 Response: 15609354
 Conc: 10.33 ng/ml



#6 beta-BHC

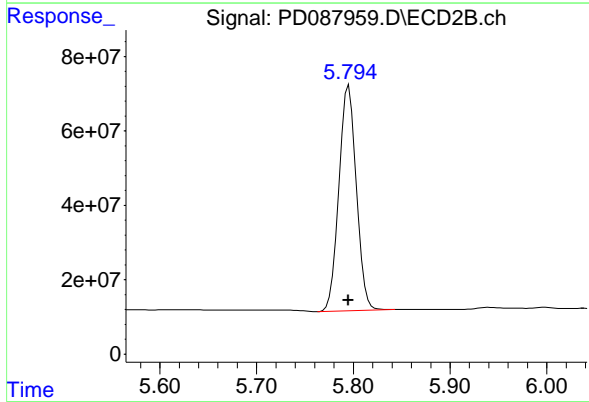
R.T.: 4.030 min
 Delta R.T.: 0.000 min
 Response: 101150521
 Conc: 11.69 ng/ml



#14 Endrin

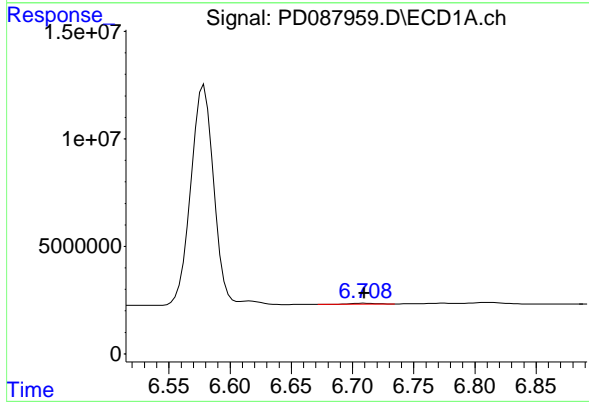
R.T.: 6.579 min
 Delta R.T.: 0.000 min
 Response: 129325019
 Conc: 46.39 ng/ml

Instrument :
 ECD_D
 ClientSampleId :
 PEM



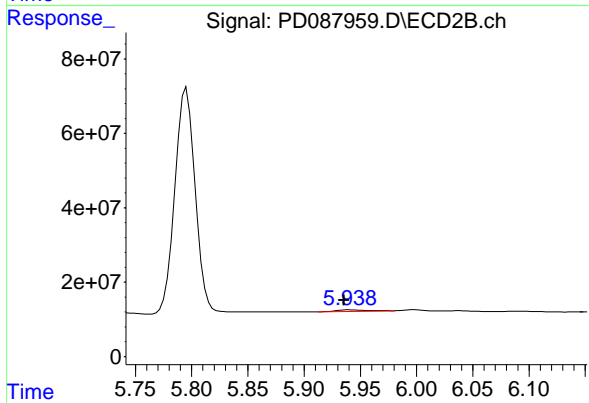
#14 Endrin

R.T.: 5.795 min
 Delta R.T.: 0.000 min
 Response: 757713997
 Conc: 45.22 ng/ml



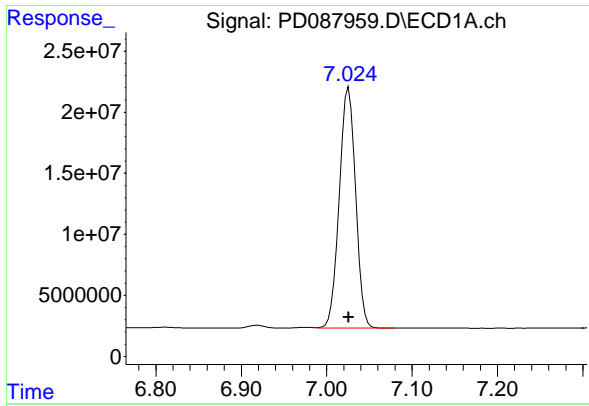
#16 4,4'-DDD

R.T.: 6.710 min
 Delta R.T.: 0.000 min
 Response: 571360
 Conc: 0.24 ng/ml



#16 4,4'-DDD

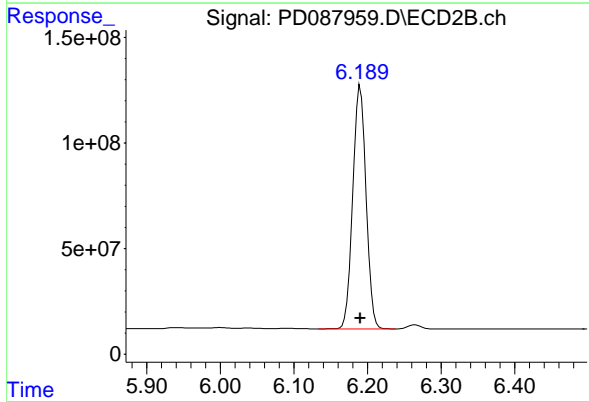
R.T.: 5.940 min
 Delta R.T.: 0.005 min
 Response: 7376301
 Conc: 0.49 ng/ml



#17 4,4'-DDT

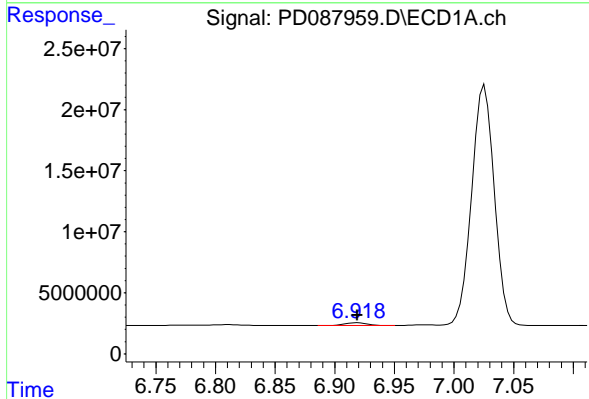
R.T.: 7.026 min
 Delta R.T.: 0.000 min
 Response: 261203751
 Conc: 99.61 ng/ml

Instrument :
 ECD_D
 ClientSampleId :
 PEM



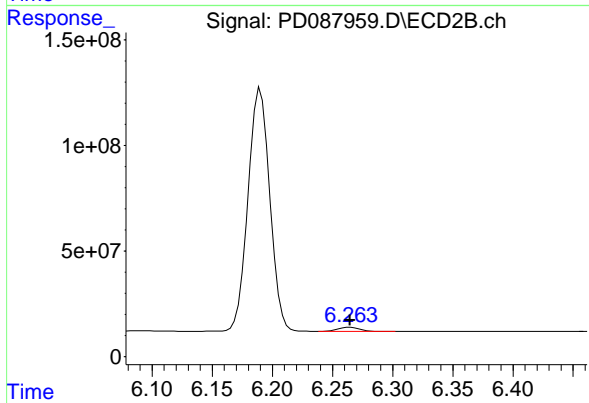
#17 4,4'-DDT

R.T.: 6.190 min
 Delta R.T.: 0.000 min
 Response: 1445446558
 Conc: 93.49 ng/ml



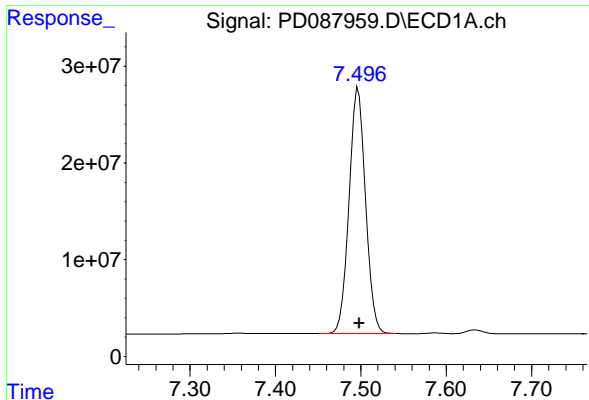
#18 Endrin aldehyde

R.T.: 6.919 min
 Delta R.T.: 0.000 min
 Response: 3093424
 Conc: 1.40 ng/ml



#18 Endrin aldehyde

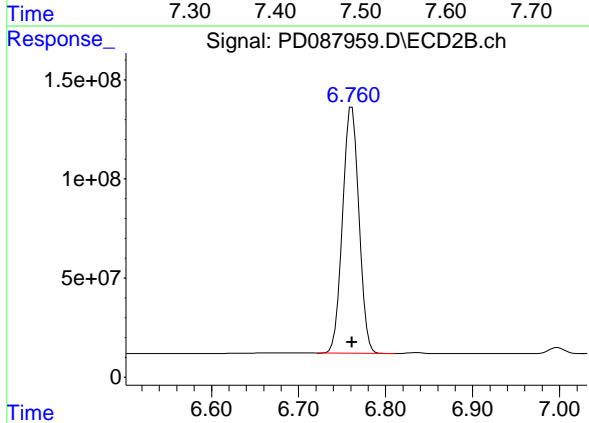
R.T.: 6.265 min
 Delta R.T.: 0.000 min
 Response: 24918511
 Conc: 1.98 ng/ml



#20 Methoxychlor

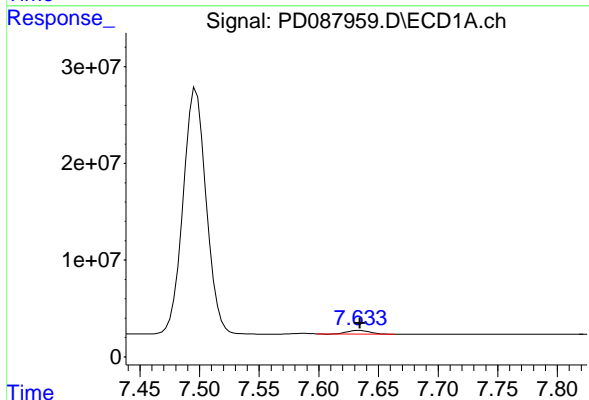
R.T.: 7.497 min
 Delta R.T.: -0.001 min
 Response: 342008568
 Conc: 242.72 ng/ml

Instrument :
 ECD_D
 ClientSampleId :
 PEM



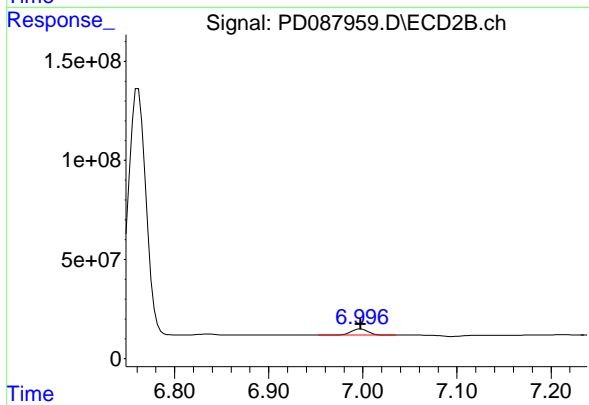
#20 Methoxychlor

R.T.: 6.761 min
 Delta R.T.: 0.000 min
 Response: 1641184575
 Conc: 198.56 ng/ml



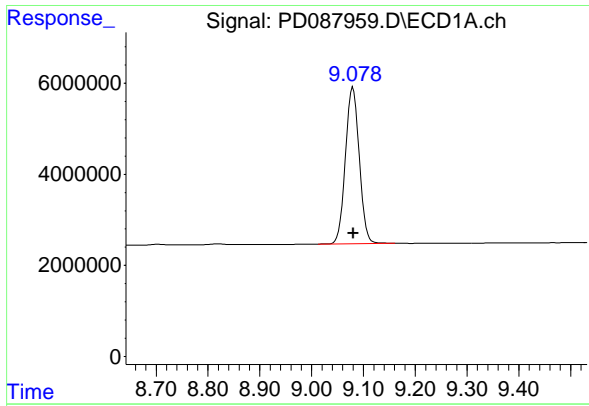
#21 Endrin ketone

R.T.: 7.634 min
 Delta R.T.: 0.000 min
 Response: 4747118
 Conc: 1.65 ng/ml



#21 Endrin ketone

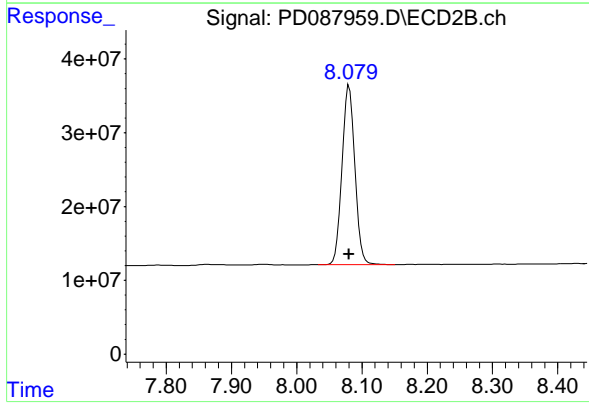
R.T.: 6.998 min
 Delta R.T.: 0.000 min
 Response: 39051306
 Conc: 2.29 ng/ml



#28 Decachlorobiphenyl

R.T.: 9.080 min
Delta R.T.: 0.000 min
Response: 63783867
Conc: 21.37 ng/ml

Instrument :
ECD_D
ClientSampleId :
PEM



#28 Decachlorobiphenyl

R.T.: 8.080 min
Delta R.T.: 0.000 min
Response: 333032633
Conc: 21.31 ng/ml