

Data Path : Z:\pestpcbsrv\HPCHEM1\ECD_D\Data\PD031419\
 Data File : PD051815.D
 Signal(s) : Signal #1: ECD1A.CH Signal #2: ECD2B.CH
 Acq On : 14 Mar 2019 12:10
 Operator : AJ\SJ
 Sample : K1794-01
 Misc :
 ALS Vial : 4 Sample Multiplier: 1

Instrument :
 ECD_D
 ClientSampleId :
 BF5N3

Integration File signal 1: autoint1.e
 Integration File signal 2: autoint2.e
 Quant Time: Mar 15 03:21:52 2019
 Quant Method : Z:\pestpcbsrv\HPCHEM1\ECD_D\Method\PD022219CLP.M
 Quant Title : GC Extractables
 QLast Update : Fri Feb 22 04:35:08 2019
 Response via : Initial Calibration
 Integrator: ChemStation 6890 Scale Mode: Large solvent peaks clipped

Volume Inj. : 1 µl
 Signal #1 Phase : ZB-MR2 Signal #2 Phase: ZB-MR1
 Signal #1 Info : 30M x 0.32mm x0.2 Signal #2 Info : 30M x 0.32mm x 0.50µm

Compound	RT#1	RT#2	Resp#1	Resp#2	ng/ml	ng/ml

System Monitoring Compounds						
1) SA Tetrachlo...	3.228	4.044	9761477	221.8E6	6.793	7.178
27) SA Decachlor...	7.831	9.162	9434988	133.6E6	7.845	7.045
Target Compounds						
3) MA gamma-BHC...	0.000	4.746	0 30165952		N.D.	0.706
8) B Heptachlo...	0.000	5.923	0 62881970		N.D.	1.756
14) MA Endrin	0.000	6.767	0 32950268		N.D.	1.247
16) A 4,4'-DDD	0.000	6.826f	0 11130576		N.D.	0.425

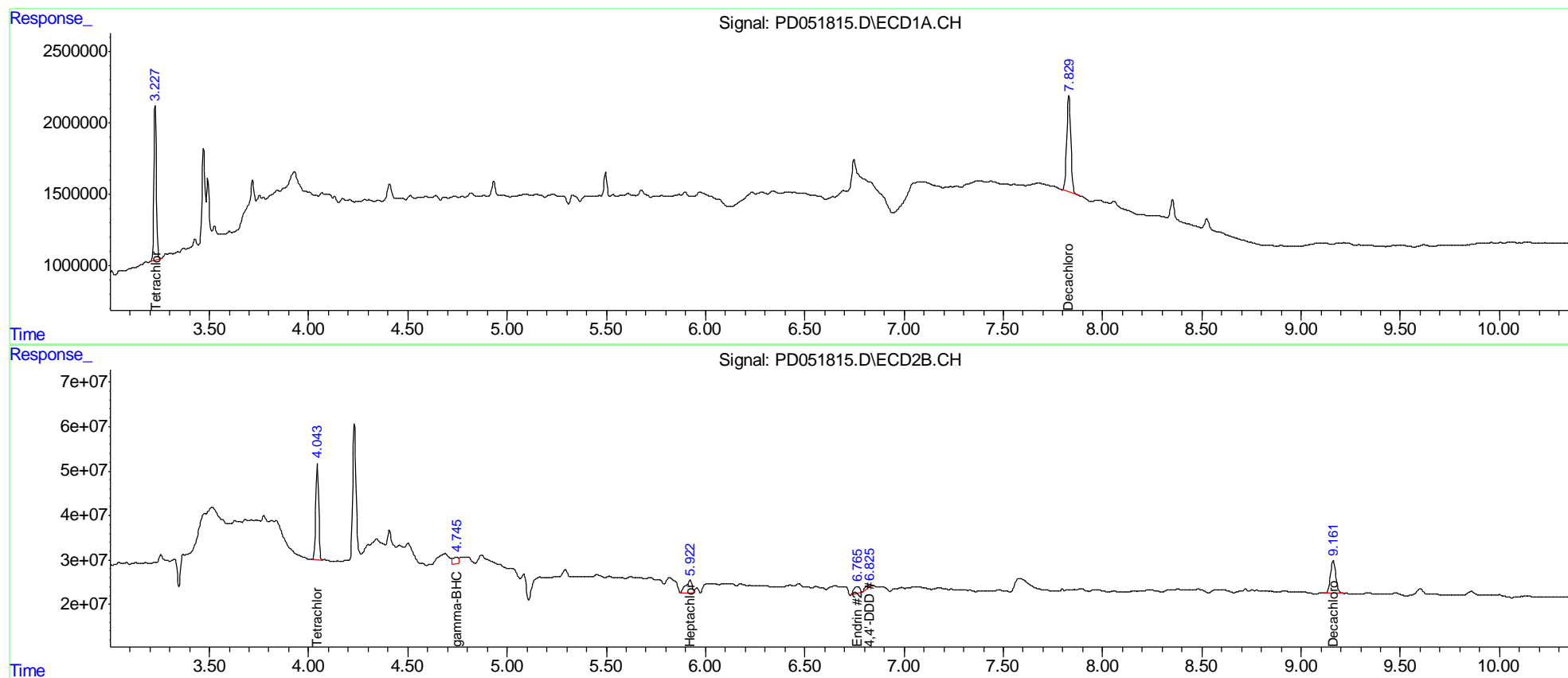
(f)=RT Delta > 1/2 Window (#)=Amounts differ by > 25% (m)=manual int.

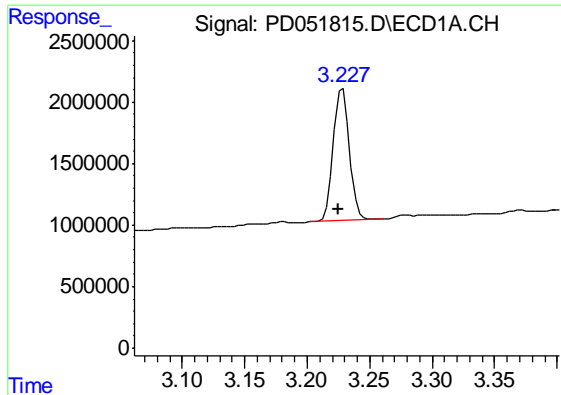
Data Path : Z:\pestpcbsrv\HPCHEM1\ECD_D\Data\PD031419\
 Data File : PD051815.D
 Signal(s) : Signal #1: ECD1A.CH Signal #2: ECD2B.CH
 Acq On : 14 Mar 2019 12:10
 Operator : AJ\SJ
 Sample : K1794-01
 Misc :
 ALS Vial : 4 Sample Multiplier: 1

Instrument :
 ECD_D
 ClientSampleId :
 BF5N3

Integration File signal 1: autoint1.e
 Integration File signal 2: autoint2.e
 Quant Time: Mar 15 03:21:52 2019
 Quant Method : Z:\pestpcbsrv\HPCHEM1\ECD_D\Method\PD022219CLP.M
 Quant Title : GC Extractables
 QLast Update : Fri Feb 22 04:35:08 2019
 Response via : Initial Calibration
 Integrator: ChemStation 6890 Scale Mode: Large solvent peaks clipped

Volume Inj. : 1 µl
 Signal #1 Phase : ZB-MR2 Signal #2 Phase: ZB-MR1
 Signal #1 Info : 30M x 0.32mm x0.2 Signal #2 Info : 30M x 0.32mm x 0.50µm

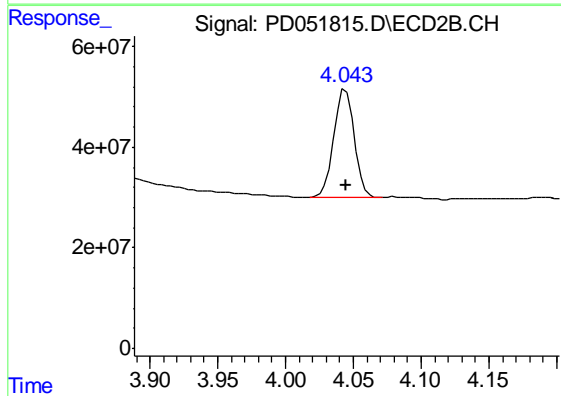




#1 Tetrachloro-m-xylene

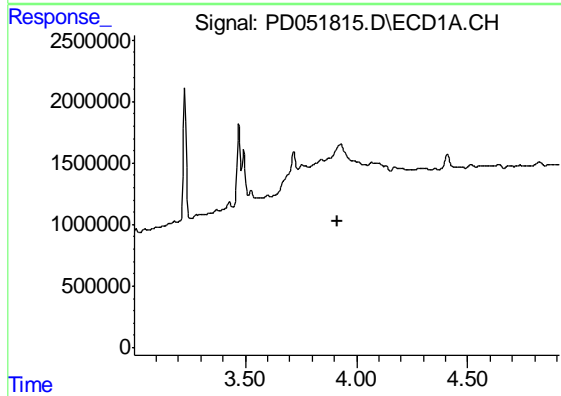
R.T.: 3.228 min
 Delta R.T.: 0.003 min
 Response: 9761477
 Conc: 6.79 ng/ml

Instrument :
 ECD_D
 ClientSampleId :
 BF5N3



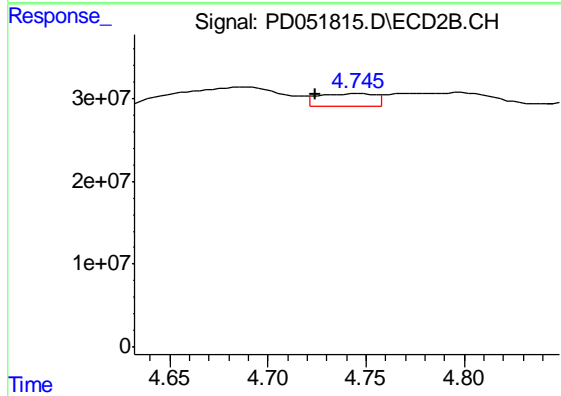
#1 Tetrachloro-m-xylene

R.T.: 4.044 min
 Delta R.T.: 0.000 min
 Response: 221763876
 Conc: 7.18 ng/ml



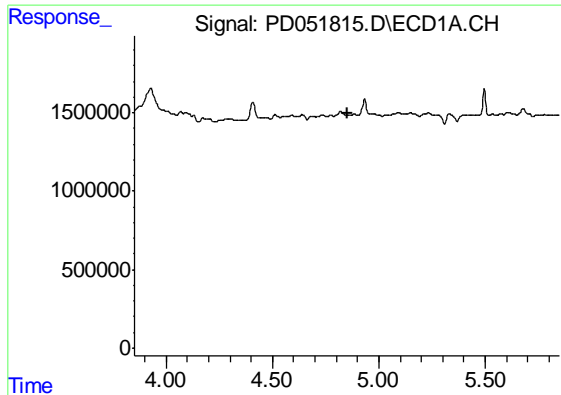
#3 gamma-BHC (Lindane)

R.T.: 0.000 min
 Exp R.T. : 3.913 min
 Response: 0
 Conc: N.D.



#3 gamma-BHC (Lindane)

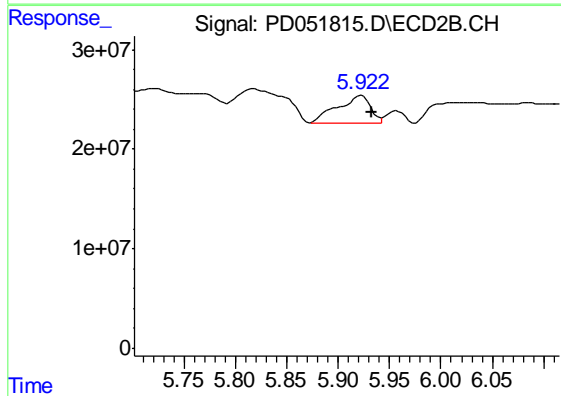
R.T.: 4.746 min
 Delta R.T.: 0.022 min
 Response: 30165952
 Conc: 0.71 ng/ml



#8 Heptachlor epoxide

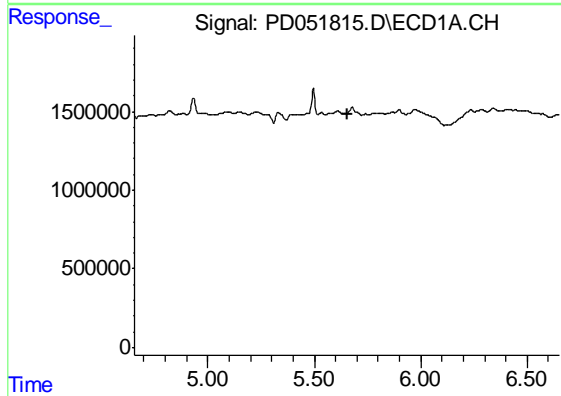
R.T.: 0.000 min
 Exp R.T. : 4.851 min
 Response: 0
 Conc: N.D.

Instrument :
 ECD_D
 ClientSampleId :
 BF5N3



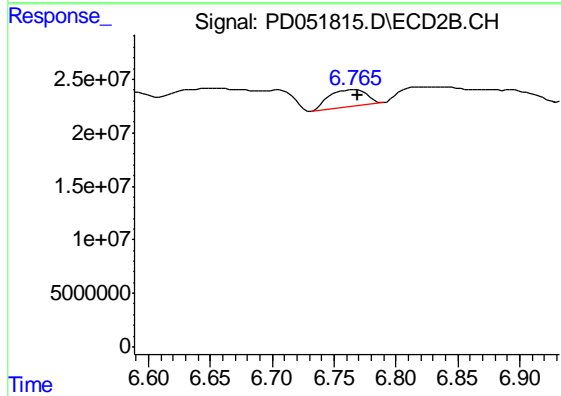
#8 Heptachlor epoxide

R.T.: 5.923 min
 Delta R.T.: -0.010 min
 Response: 62881970
 Conc: 1.76 ng/ml



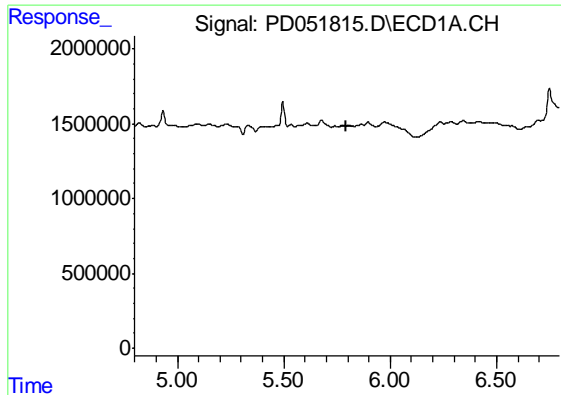
#14 Endrin

R.T.: 0.000 min
 Exp R.T. : 5.655 min
 Response: 0
 Conc: N.D.



#14 Endrin

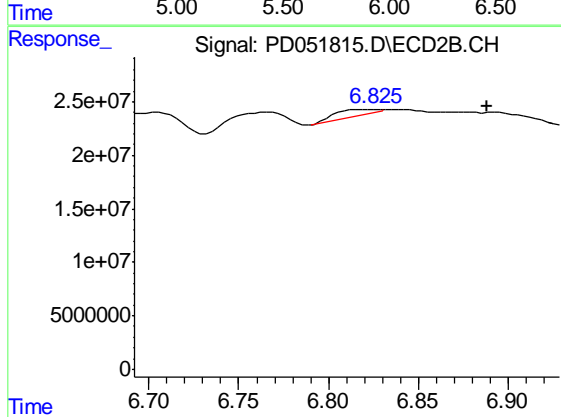
R.T.: 6.767 min
 Delta R.T.: -0.002 min
 Response: 32950268
 Conc: 1.25 ng/ml



#16 4,4'-DDD

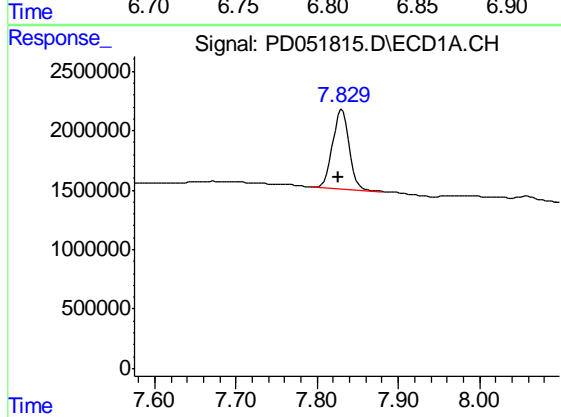
R.T.: 0.000 min
 Exp R.T.: 5.795 min
 Response: 0
 Conc: N.D.

Instrument :
 ECD_D
 ClientSampleId :
 BF5N3



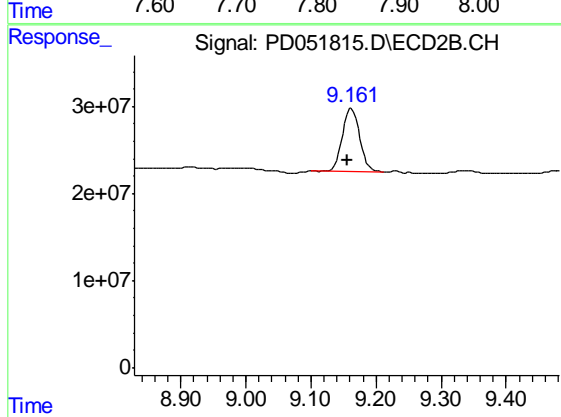
#16 4,4'-DDD

R.T.: 6.826 min
 Delta R.T.: -0.062 min
 Response: 11130576
 Conc: 0.43 ng/ml



#27 Decachlorobiphenyl

R.T.: 7.831 min
 Delta R.T.: 0.005 min
 Response: 9434988
 Conc: 7.85 ng/ml



#27 Decachlorobiphenyl

R.T.: 9.162 min
 Delta R.T.: 0.005 min
 Response: 133563964
 Conc: 7.05 ng/ml