

Data Path : Z:\pestpcbsrv\HPCHEM1\ECD_D\Data\PD031819\
 Data File : PD051821.D
 Signal(s) : Signal #1: ECD1A.CH Signal #2: ECD2B.CH
 Acq On : 18 Mar 2019 10:05
 Operator : AJ\SJ
 Sample : PEM
 Misc :
 ALS Vial : 3 Sample Multiplier: 1

Instrument :
 ECD_D
 ClientSampleId :
 PEM

Integration File signal 1: autoint1.e
 Integration File signal 2: autoint2.e
 Quant Time: Mar 19 02:28:55 2019
 Quant Method : Z:\pestpcbsrv\HPCHEM1\ECD_D\Method\PD030219.M
 Quant Title : GC Extractables
 QLast Update : Fri Mar 01 23:43:17 2019
 Response via : Initial Calibration
 Integrator: ChemStation 6890 Scale Mode: Large solvent peaks clipped

Volume Inj. : 2 µl
 Signal #1 Phase : ZB-MR2 Signal #2 Phase: ZB-MR1
 Signal #1 Info : 30M x 0.32mm x0.2 Signal #2 Info : 30M x 0.32mm x 0.50µm

	Compound	RT#1	RT#2	Resp#1	Resp#2	ng/ml	ng/ml

System Monitoring Compounds							
1)	SA Tetrachlo...	3.222	4.042	28209388	598.1E6	21.275	20.858
28)	SA Decachlor...	7.821	9.154	21551985	329.9E6	18.961	18.062
Target Compounds							
2)	A alpha-BHC	3.642	4.434	19879646	460.2E6	9.056	10.547
3)	MA gamma-BHC...	3.911	4.722	20865104	423.4E6	9.987	10.691
6)	B beta-BHC	4.156	4.892	9486121	194.9E6	10.774	10.845
7)	B delta-BHC	0.000	5.085f	0	9053879	N.D.	0.263 #
8)	B Heptachlo...	0.000	5.917	0	2931360	N.D.	0.091 #
11)	B alpha-Chl...	0.000	6.257f	0	6236897	N.D.	0.197 #
12)	B 4,4'-DDE	0.000	6.393	0	11912151	N.D.	0.385 #
13)	MA Dieldrin	0.000	6.565f	0	903781	N.D.	0.029 #
14)	MA Endrin	5.651	6.766	94128022	1141.7E6	49.130	43.722
15)	B Endosulfa...	0.000	6.985	0	16174087	N.D.	0.628 #
16)	A 4,4'-DDD	5.793	6.888	1911882	44827393	1.214	1.825 #
17)	MA 4,4'-DDT	6.022	7.186	176.9E6	1940.1E6	110.731	95.775
18)	B Endrin al...	6.086	7.099	2409695	28345599	1.629	1.322
20)	A Methoxychlor	6.568	7.645	214.7E6	2301.0E6	241.727	209.050
21)	B Endrin ke...	6.770	7.797	4876500	42471785	2.634	1.880 #
22)	Mirex	0.000	8.263	0	3652312	N.D.	0.236 #
26)	Chlordane-4	0.000	6.257f	0	6236897	N.D.	1.191 #

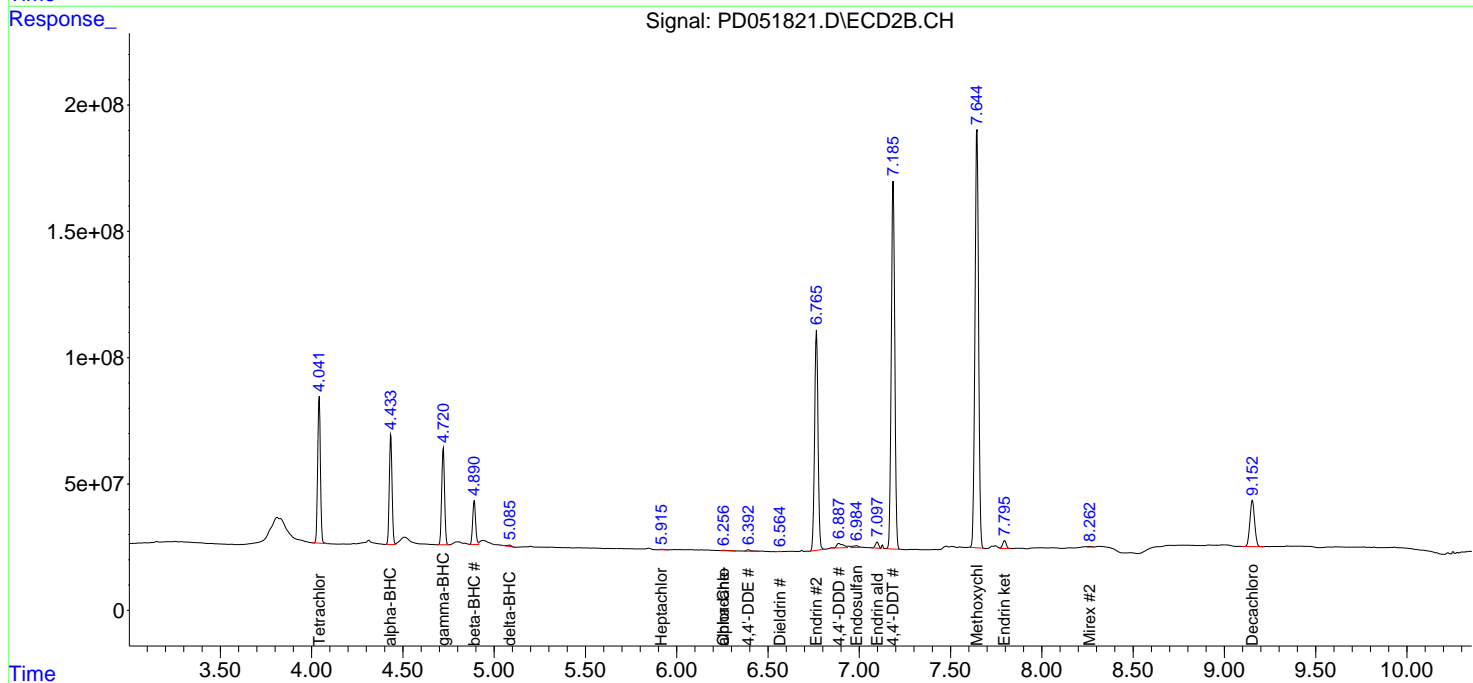
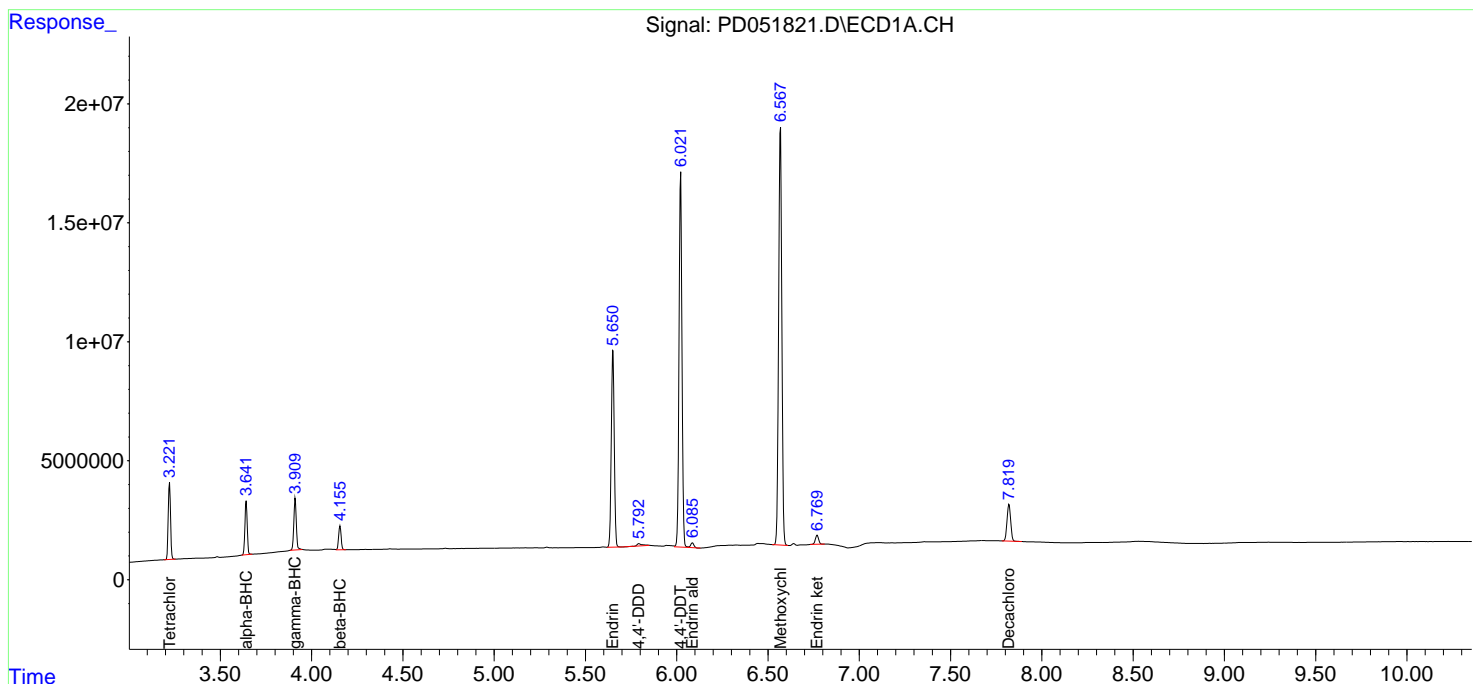
(f)=RT Delta > 1/2 Window (#)=Amounts differ by > 25% (m)=manual int.

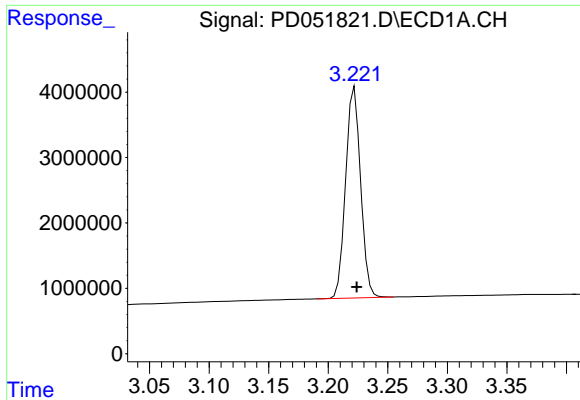
Data Path : Z:\pestpcbsrv\HPCHEM1\ECD_D\Data\PD031819\
 Data File : PD051821.D
 Signal(s) : Signal #1: ECD1A.CH Signal #2: ECD2B.CH
 Acq On : 18 Mar 2019 10:05
 Operator : AJ\SJ
 Sample : PEM
 Misc :
 ALS Vial : 3 Sample Multiplier: 1

Instrument :
 ECD_D
 ClientSampled :
 PEM

Integration File signal 1: autoint1.e
 Integration File signal 2: autoint2.e
 Quant Time: Mar 19 02:28:55 2019
 Quant Method : Z:\pestpcbsrv\HPCHEM1\ECD_D\Method\PD030219.M
 Quant Title : GC Extractables
 QLast Update : Fri Mar 01 23:43:17 2019
 Response via : Initial Calibration
 Integrator: ChemStation 6890 Scale Mode: Large solvent peaks clipped

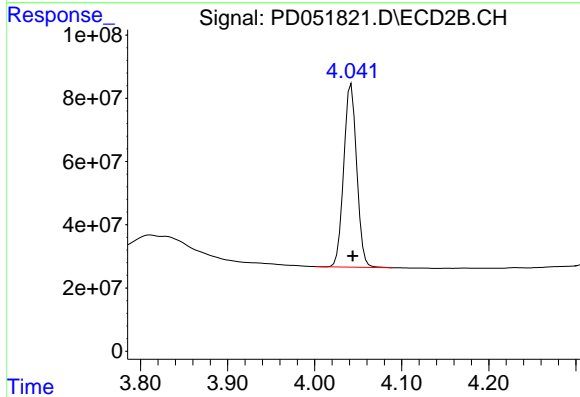
Volume Inj. : 2 µl
 Signal #1 Phase : ZB-MR2 Signal #2 Phase: ZB-MR1
 Signal #1 Info : 30M x 0.32mm x0.2 Signal #2 Info : 30M x 0.32mm x 0.50µm



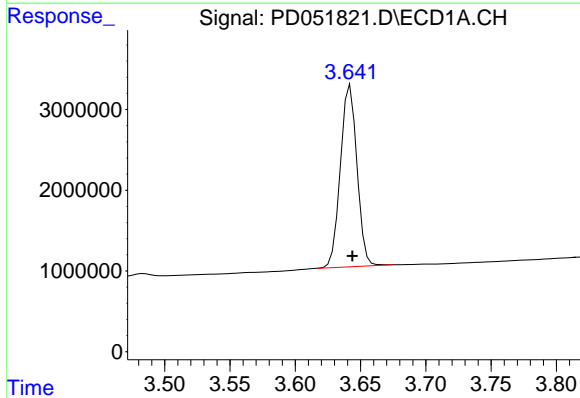


#1 Tetrachloro-m-xylene
 R.T.: 3.222 min
 Delta R.T.: -0.002 min
 Response: 28209388
 Conc: 21.28 ng/ml

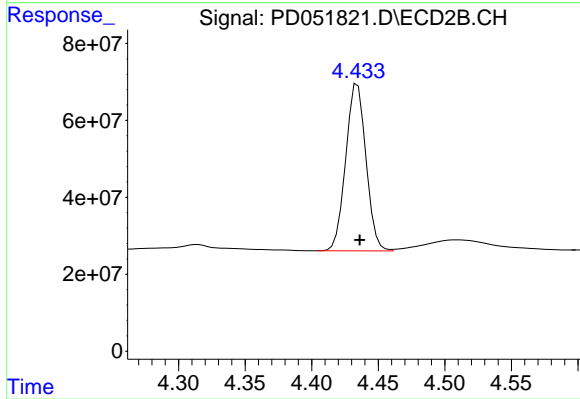
Instrument :
 ECD_D
 ClientSampled :
 PEM



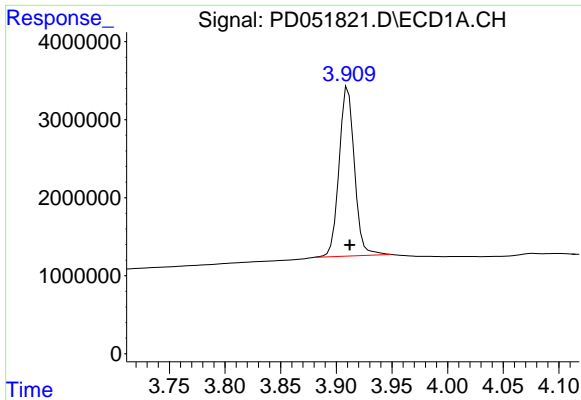
#1 Tetrachloro-m-xylene
 R.T.: 4.042 min
 Delta R.T.: -0.002 min
 Response: 598142122
 Conc: 20.86 ng/ml



#2 alpha-BHC
 R.T.: 3.642 min
 Delta R.T.: -0.002 min
 Response: 19879646
 Conc: 9.06 ng/ml



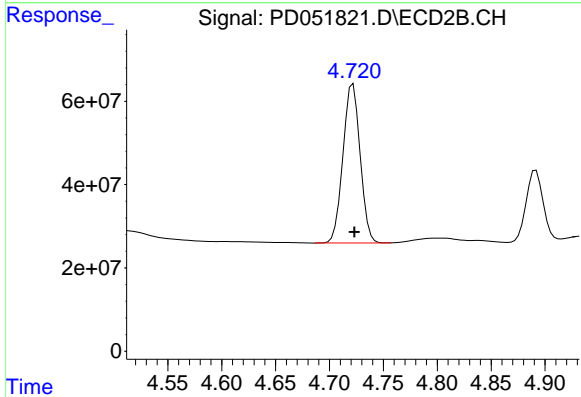
#2 alpha-BHC
 R.T.: 4.434 min
 Delta R.T.: -0.002 min
 Response: 460187499
 Conc: 10.55 ng/ml



#3 gamma-BHC (Lindane)

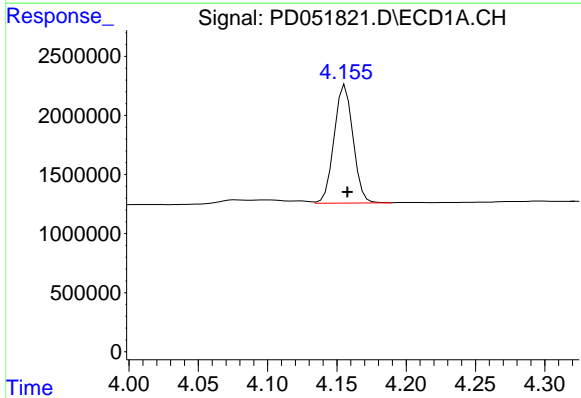
R.T.: 3.911 min
Delta R.T.: -0.001 min
Response: 20865104
Conc: 9.99 ng/ml

Instrument :
ECD_D
ClientSampled :
PEM



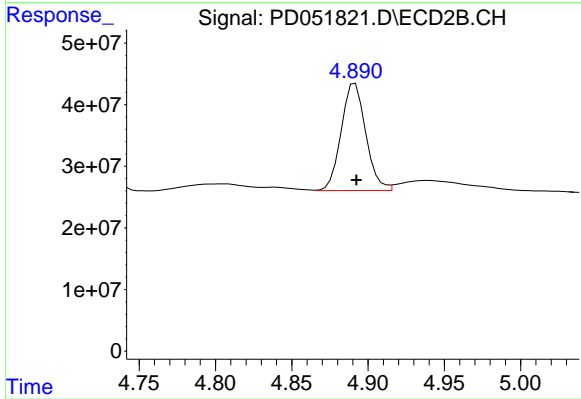
#3 gamma-BHC (Lindane)

R.T.: 4.722 min
Delta R.T.: -0.001 min
Response: 423433076
Conc: 10.69 ng/ml



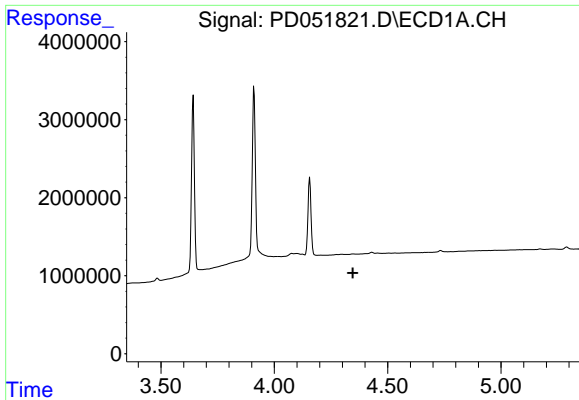
#6 beta-BHC

R.T.: 4.156 min
Delta R.T.: -0.001 min
Response: 9486121
Conc: 10.77 ng/ml



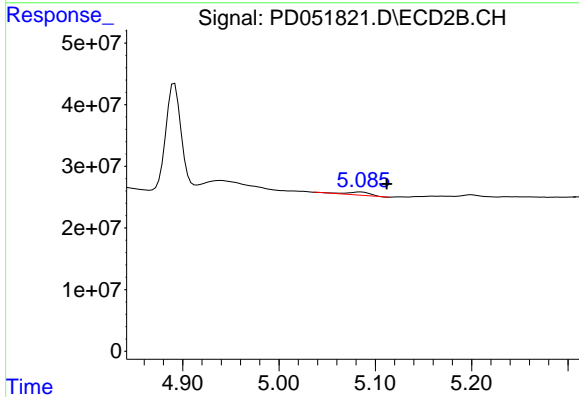
#6 beta-BHC

R.T.: 4.892 min
Delta R.T.: 0.000 min
Response: 194928753
Conc: 10.85 ng/ml

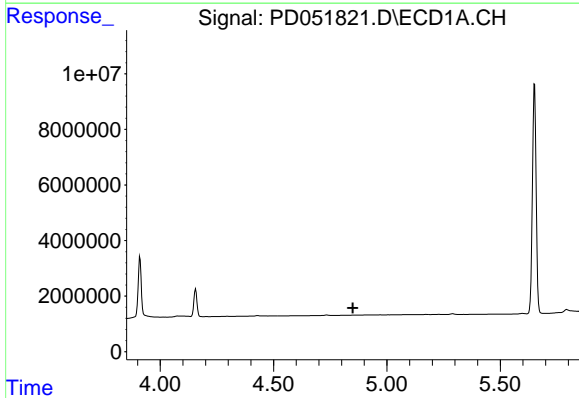


#7 delta-BHC
 R.T.: 0.000 min
 Exp R.T. : 4.346 min
 Response: 0
 Conc: N.D.

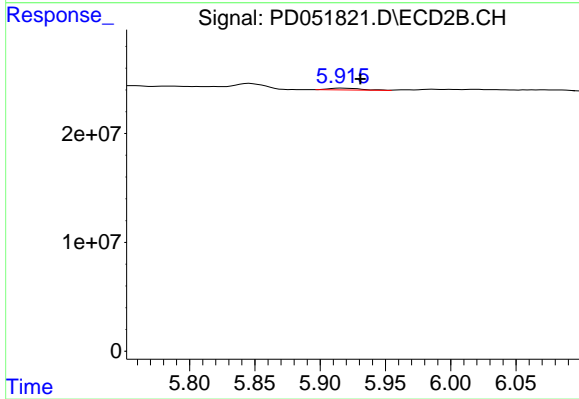
Instrument :
 ECD_D
 ClientSampleId :
 PEM



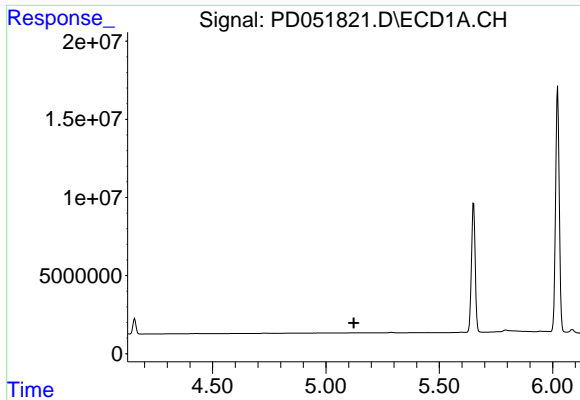
#7 delta-BHC
 R.T.: 5.085 min
 Delta R.T.: -0.027 min
 Response: 9053879
 Conc: 0.26 ng/ml



#8 Heptachlor epoxide
 R.T.: 0.000 min
 Exp R.T. : 4.849 min
 Response: 0
 Conc: N.D.



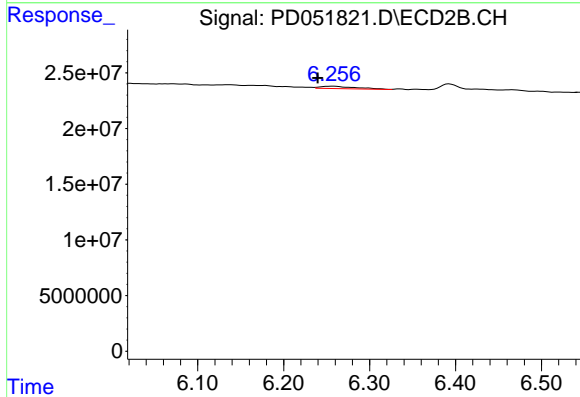
#8 Heptachlor epoxide
 R.T.: 5.917 min
 Delta R.T.: -0.014 min
 Response: 2931360
 Conc: 0.09 ng/ml



#11 alpha-Chlordane

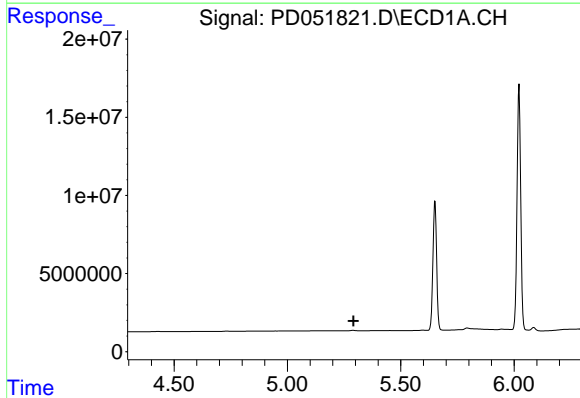
R.T.: 0.000 min
 Exp R.T. : 5.122 min
 Response: 0
 Conc: N.D.

Instrument :
 ECD_D
 ClientSampleId :
 PEM



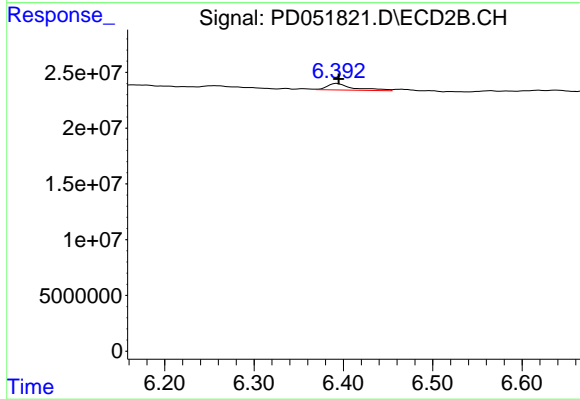
#11 alpha-Chlordane

R.T.: 6.257 min
 Delta R.T.: 0.017 min
 Response: 6236897
 Conc: 0.20 ng/ml



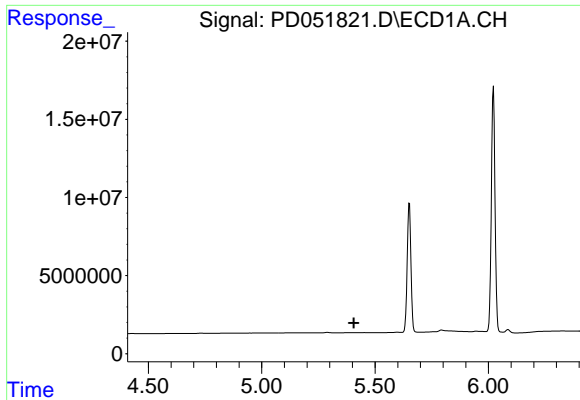
#12 4,4'-DDE

R.T.: 0.000 min
 Exp R.T. : 5.292 min
 Response: 0
 Conc: N.D.



#12 4,4'-DDE

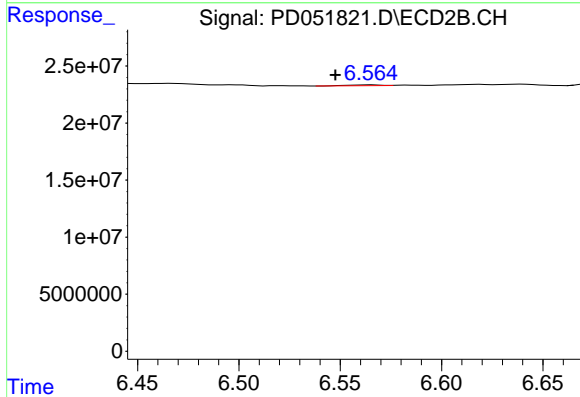
R.T.: 6.393 min
 Delta R.T.: -0.002 min
 Response: 11912151
 Conc: 0.39 ng/ml



#13 Dieldrin

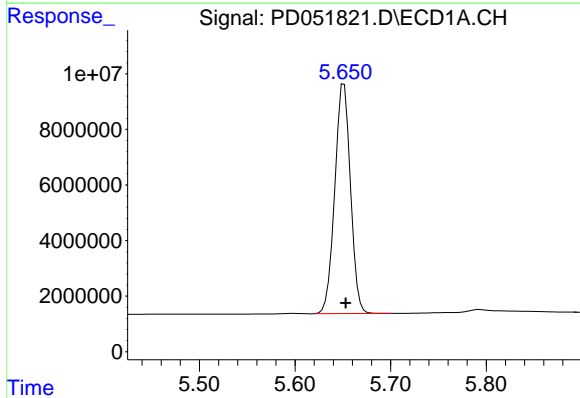
R.T.: 0.000 min
 Exp R.T.: 5.406 min
 Response: 0
 Conc: N.D.

Instrument :
 ECD_D
 ClientSampleId :
 PEM



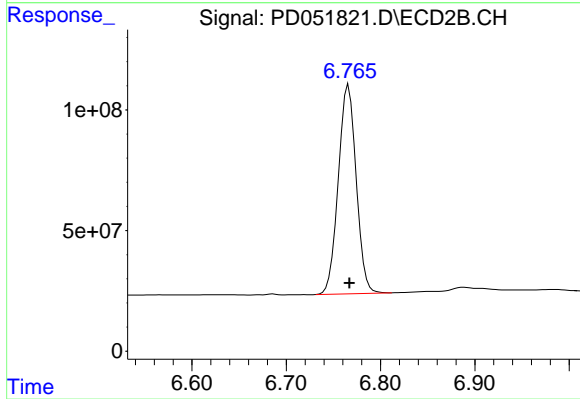
#13 Dieldrin

R.T.: 6.565 min
 Delta R.T.: 0.018 min
 Response: 903781
 Conc: 0.03 ng/ml



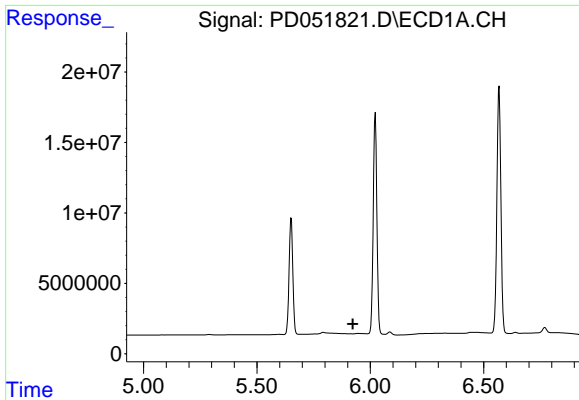
#14 Endrin

R.T.: 5.651 min
 Delta R.T.: -0.002 min
 Response: 94128022
 Conc: 49.13 ng/ml



#14 Endrin

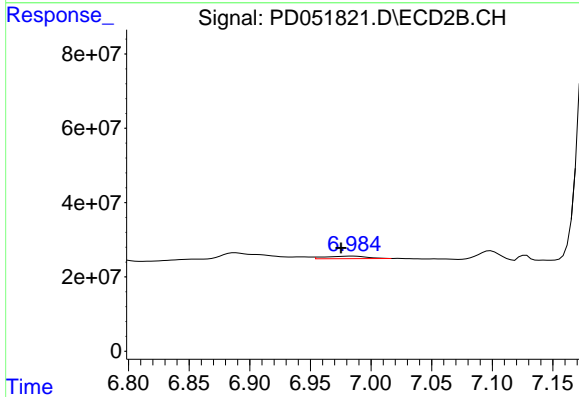
R.T.: 6.766 min
 Delta R.T.: 0.000 min
 Response: 1141666179
 Conc: 43.72 ng/ml



#15 Endosulfan II

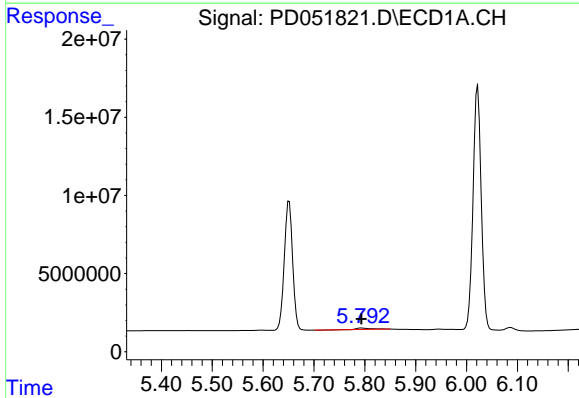
R.T.: 0.000 min
 Exp R.T.: 5.923 min
 Response: 0
 Conc: N.D.

Instrument :
 ECD_D
 ClientSampled :
 PEM



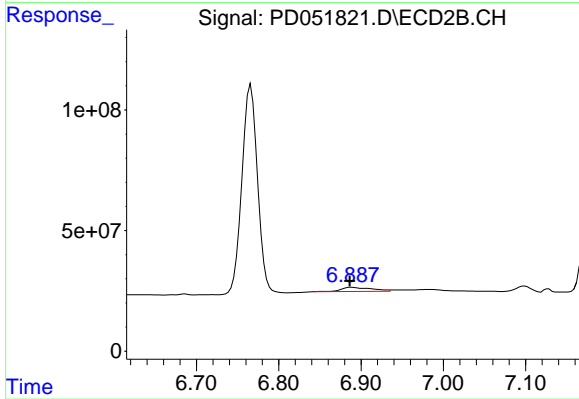
#15 Endosulfan II

R.T.: 6.985 min
 Delta R.T.: 0.010 min
 Response: 16174087
 Conc: 0.63 ng/ml



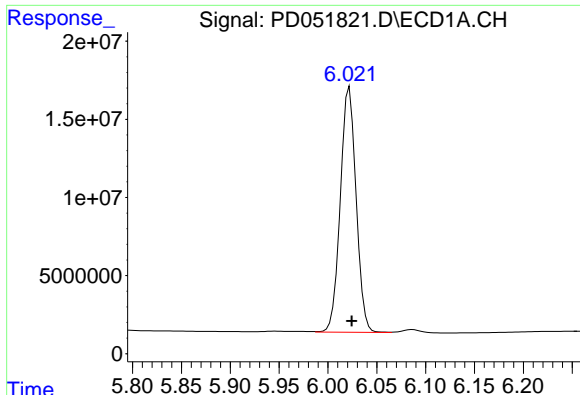
#16 4,4'-DDD

R.T.: 5.793 min
 Delta R.T.: 0.000 min
 Response: 1911882
 Conc: 1.21 ng/ml



#16 4,4'-DDD

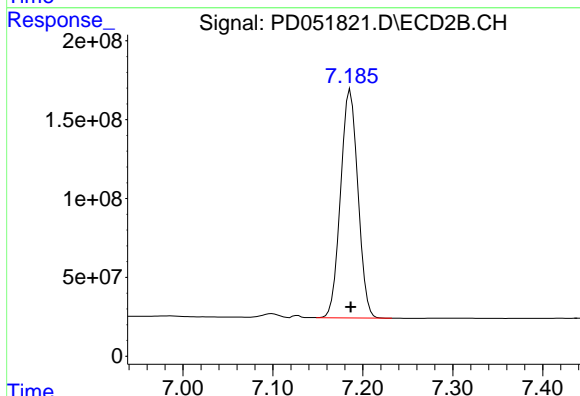
R.T.: 6.888 min
 Delta R.T.: 0.002 min
 Response: 44827393
 Conc: 1.83 ng/ml



#17 4,4'-DDT

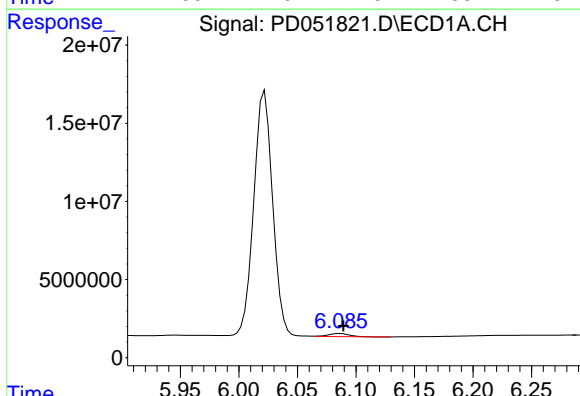
R.T.: 6.022 min
 Delta R.T.: -0.002 min
 Response: 176913499
 Conc: 110.73 ng/ml

Instrument :
 ECD_D
 ClientSampled :
 PEM



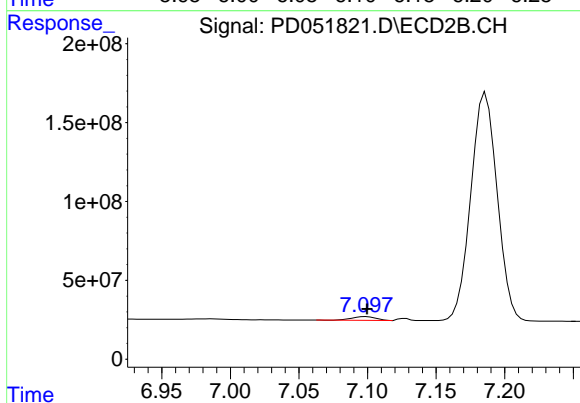
#17 4,4'-DDT

R.T.: 7.186 min
 Delta R.T.: 0.000 min
 Response: 1940097505
 Conc: 95.77 ng/ml



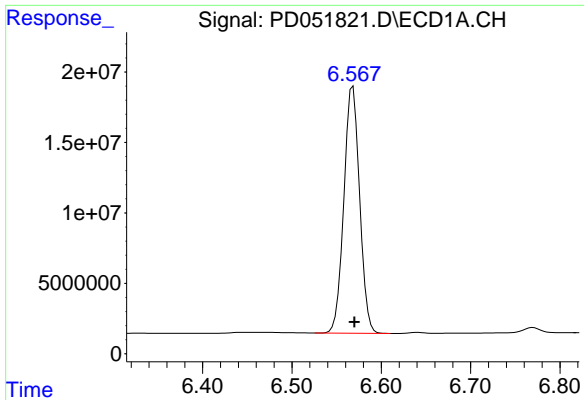
#18 Endrin aldehyde

R.T.: 6.086 min
 Delta R.T.: -0.003 min
 Response: 2409695
 Conc: 1.63 ng/ml



#18 Endrin aldehyde

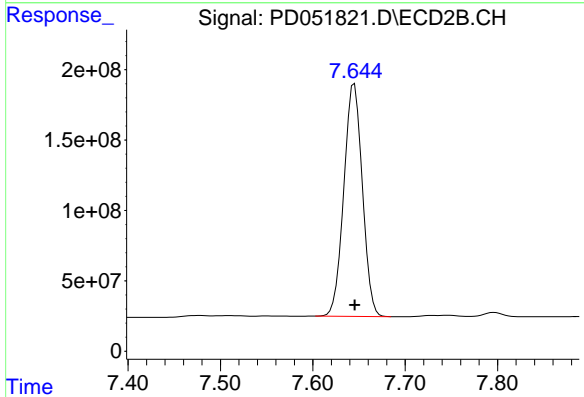
R.T.: 7.099 min
 Delta R.T.: -0.001 min
 Response: 28345599
 Conc: 1.32 ng/ml



#20 Methoxychlor

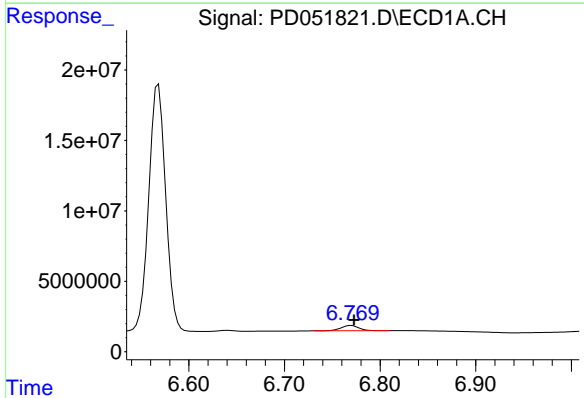
R.T.: 6.568 min
 Delta R.T.: -0.002 min
 Response: 214671106
 Conc: 241.73 ng/ml

Instrument :
 ECD_D
 ClientSampled :
 PEM



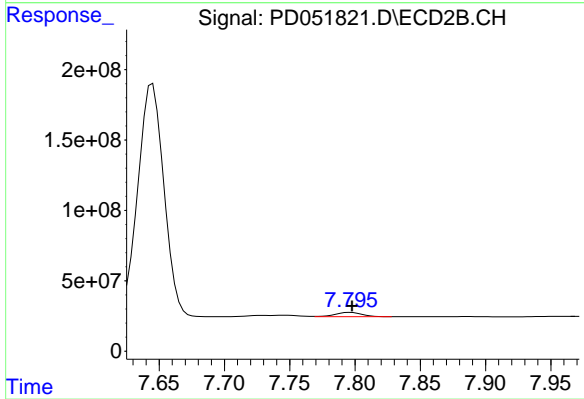
#20 Methoxychlor

R.T.: 7.645 min
 Delta R.T.: 0.000 min
 Response: 2300986074
 Conc: 209.05 ng/ml



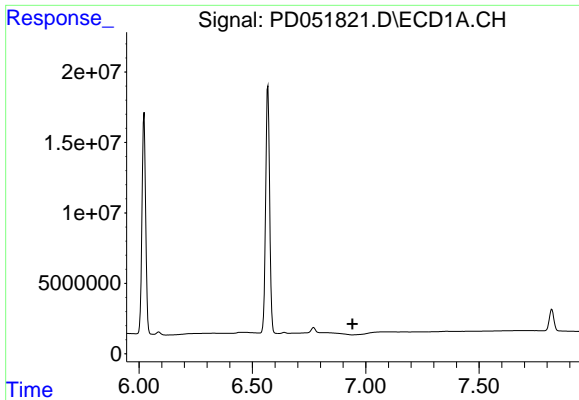
#21 Endrin ketone

R.T.: 6.770 min
 Delta R.T.: -0.003 min
 Response: 4876500
 Conc: 2.63 ng/ml



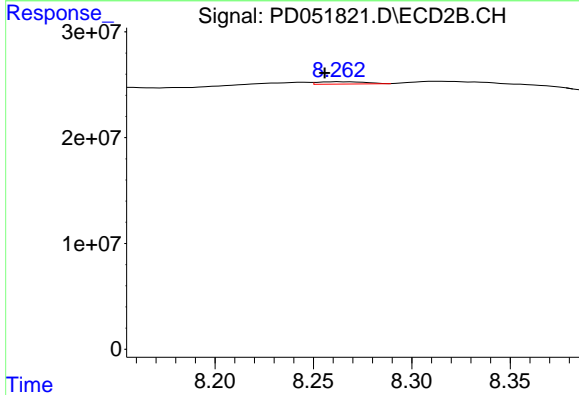
#21 Endrin ketone

R.T.: 7.797 min
 Delta R.T.: -0.001 min
 Response: 42471785
 Conc: 1.88 ng/ml

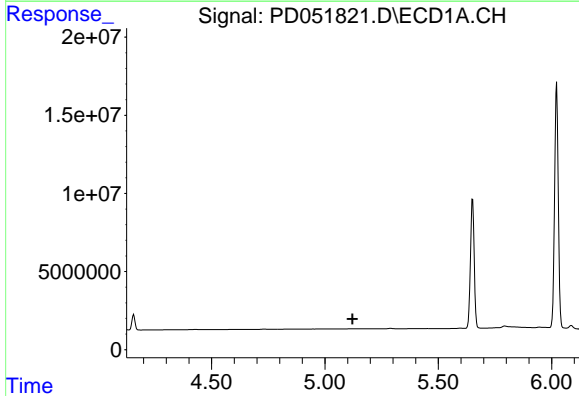


#22 Mirex
 R.T.: 0.000 min
 Exp R.T.: 6.942 min
 Response: 0
 Conc: N.D.

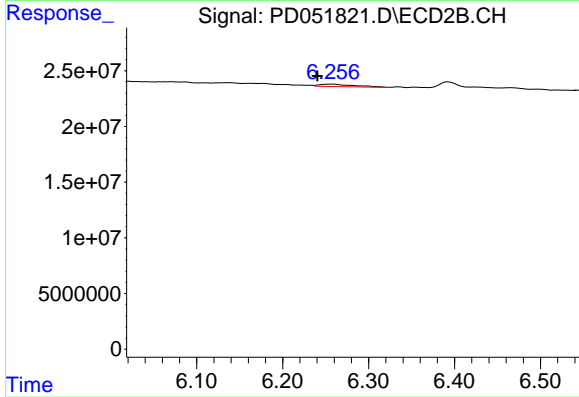
Instrument :
 ECD_D
 ClientSampleId :
 PEM



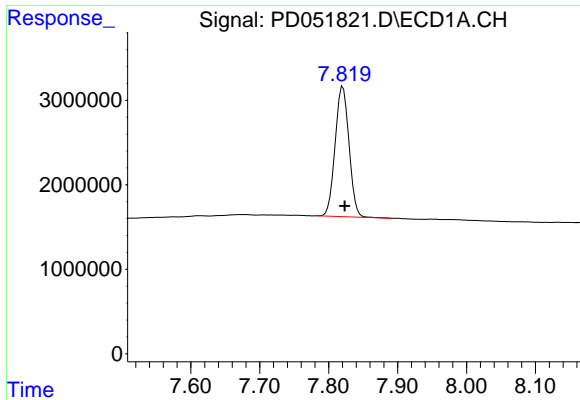
#22 Mirex
 R.T.: 8.263 min
 Delta R.T.: 0.007 min
 Response: 3652312
 Conc: 0.24 ng/ml



#26 Chlordane-4
 R.T.: 0.000 min
 Exp R.T.: 5.122 min
 Response: 0
 Conc: N.D.



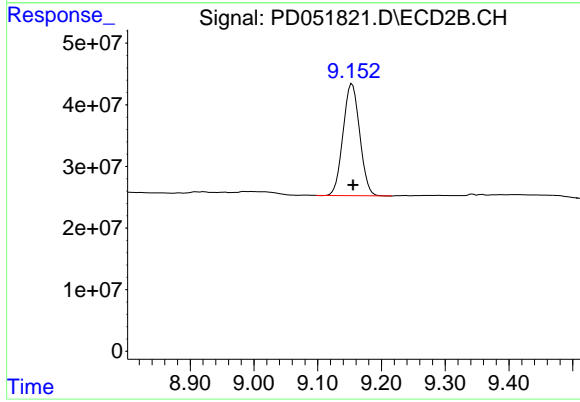
#26 Chlordane-4
 R.T.: 6.257 min
 Delta R.T.: 0.017 min
 Response: 6236897
 Conc: 1.19 ng/ml



#28 Decachlorobiphenyl

R.T.: 7.821 min
Delta R.T.: -0.003 min
Response: 21551985
Conc: 18.96 ng/ml

Instrument :
ECD_D
ClientSampleId :
PEM



#28 Decachlorobiphenyl

R.T.: 9.154 min
Delta R.T.: -0.001 min
Response: 329938237
Conc: 18.06 ng/ml