

Data Path : Z:\pestpcbsrv\HPCHEM1\ECD_D\Data\PD031919\
 Data File : PD051887.D
 Signal(s) : Signal #1: ECD1A.CH Signal #2: ECD2B.CH
 Acq On : 19 Mar 2019 15:05
 Operator : AJ\SJ
 Sample : K1938-01
 Misc :
 ALS Vial : 10 Sample Multiplier: 1

Instrument :
 ECD_D
 ClientSampled :
 W-1

Integration File signal 1: autoint1.e
 Integration File signal 2: autoint2.e
 Quant Time: Mar 20 01:10:27 2019
 Quant Method : Z:\pestpcbsrv\HPCHEM1\ECD_D\Method\PD030219.M
 Quant Title : GC Extractables
 QLast Update : Fri Mar 01 23:43:17 2019
 Response via : Initial Calibration
 Integrator: ChemStation 6890 Scale Mode: Large solvent peaks clipped

Volume Inj. : 2 µl
 Signal #1 Phase : ZB-MR2 Signal #2 Phase: ZB-MR1
 Signal #1 Info : 30M x 0.32mm x0.2 Signal #2 Info : 30M x 0.32mm x 0.50µm

Compound	RT#1	RT#2	Resp#1	Resp#2	ng/ml	ng/ml

System Monitoring Compounds						
1) SA Tetrachlo...	3.223	4.044	29357828	607.7E6	22.141	21.190
28) SA Decachlor...	7.821	9.154	16951839	270.2E6	14.914	14.794
Target Compounds						
2) A alpha-BHC	3.635	4.440	674265	15811707	0.307	0.362
3) MA gamma-BHC...	3.915	4.728	3634168	5854769	1.739	0.148 #
4) MA Heptachlor	0.000	5.217f	0	14909674	N.D.	0.389 #
5) MB Aldrin	0.000	5.524f	0	10257904	N.D.	0.286 #
6) B beta-BHC	0.000	4.868f	0	9389276	N.D.	0.522 #
7) B delta-BHC	0.000	5.086f	0	47822194	N.D.	1.392 #
8) B Heptachlo...	0.000	5.918	0	8632566	N.D.	0.269 #
9) A Endosulfan I	0.000	6.288	0	12669418	N.D.	0.427 #
10) B gamma-Chl...	5.062	6.168	1351293	26575248	0.667	0.831
11) B alpha-Chl...	0.000	6.234	0	26964836	N.D.	0.851 #
12) B 4,4'-DDE	0.000	6.396	0	17935472	N.D.	0.580 #
13) MA Dieldrin	0.000	6.545	0	6777513	N.D.	0.220 #
14) MA Endrin	0.000	6.776	0	3388833	N.D.	0.130 #
15) B Endosulfa...	5.893f	6.970	478802	6534643	0.266	0.254
16) A 4,4'-DDD	5.791	6.884	803399	23153745	0.510	0.943 #
17) MA 4,4'-DDT	0.000	7.203f	0	4419969	N.D.	0.218 #
18) B Endrin al...	0.000	7.084f	0	7265340	N.D.	0.339 #
19) B Endosulfa...	0.000	7.325	0	6091924	N.D.	0.260 #
20) A Methoxychlor	6.575	7.660	904126	2218183	1.018	0.202 #
21) B Endrin ke...	0.000	7.797	0	2092648	N.D.	0.093 #
22) Mirex	0.000	8.244	0	6092222	N.D.	0.394 #
23) Chlordane-1	4.076f	5.035	450677	16407433	7.046	10.715 #
24) Chlordane-2	0.000	5.524	0	10257904	N.D.	7.234 #
25) Chlordane-3	5.062	6.168	1351293	26575248	5.806	5.968
26) Chlordane-4	0.000	6.234	0	26964836	N.D.	5.149 #
27) Chlordane-5	0.000	7.020f	0	7670107	N.D.	7.572 #

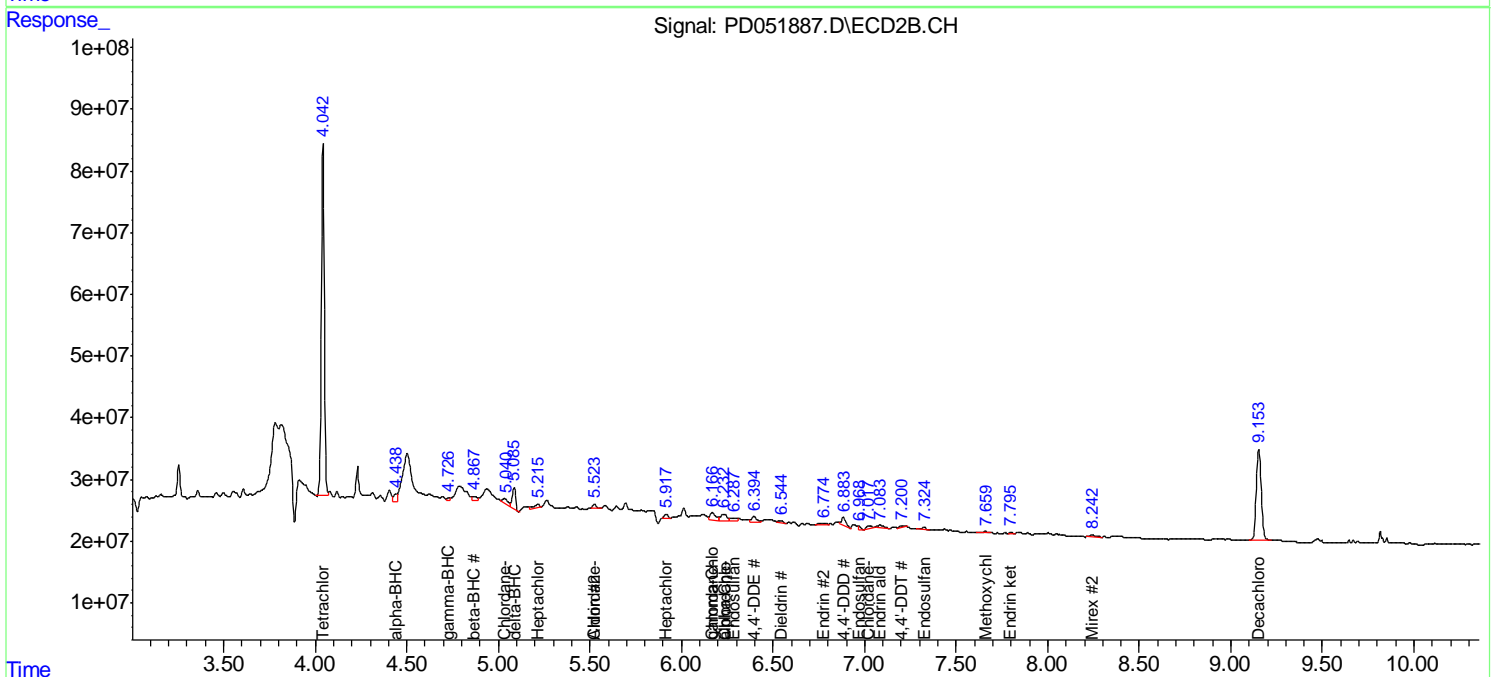
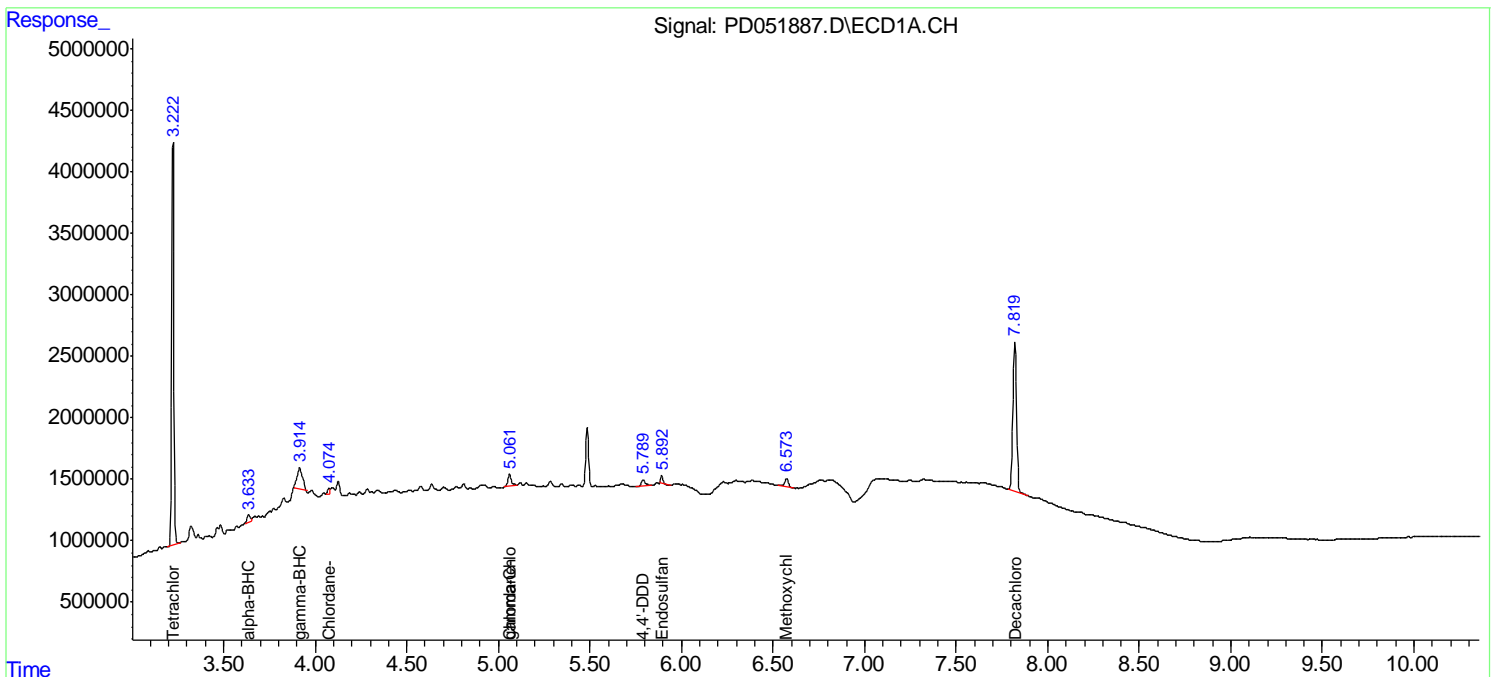
(f)=RT Delta > 1/2 Window (#)=Amounts differ by > 25% (m)=manual int.

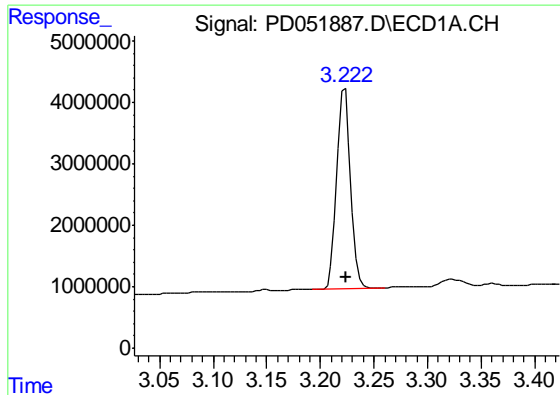
Data Path : Z:\pestpcbsrv\HPCHEM1\ECD_D\Data\PD031919\
 Data File : PD051887.D
 Signal(s) : Signal #1: ECD1A.CH Signal #2: ECD2B.CH
 Acq On : 19 Mar 2019 15:05
 Operator : AJ\SJ
 Sample : K1938-01
 Misc :
 ALS Vial : 10 Sample Multiplier: 1

Instrument :
 ECD_D
 Client Sampled :
 W-1

Integration File signal 1: autoint1.e
 Integration File signal 2: autoint2.e
 Quant Time: Mar 20 01:10:27 2019
 Quant Method : Z:\pestpcbsrv\HPCHEM1\ECD_D\Method\PD030219.M
 Quant Title : GC Extractables
 QLast Update : Fri Mar 01 23:43:17 2019
 Response via : Initial Calibration
 Integrator: ChemStation 6890 Scale Mode: Large solvent peaks clipped

Volume Inj. : 2 µl
 Signal #1 Phase : ZB-MR2 Signal #2 Phase: ZB-MR1
 Signal #1 Info : 30M x 0.32mm x0.2 Signal #2 Info : 30M x 0.32mm x 0.50µm

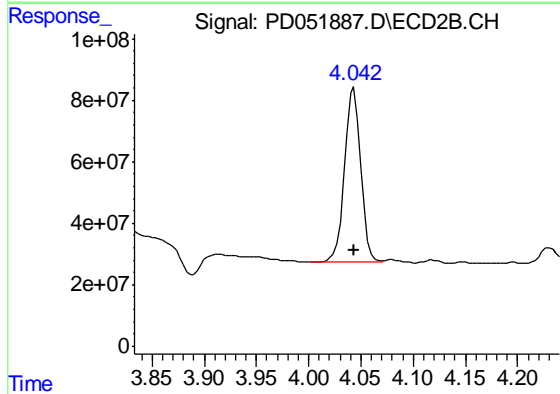




#1 Tetrachloro-m-xylene

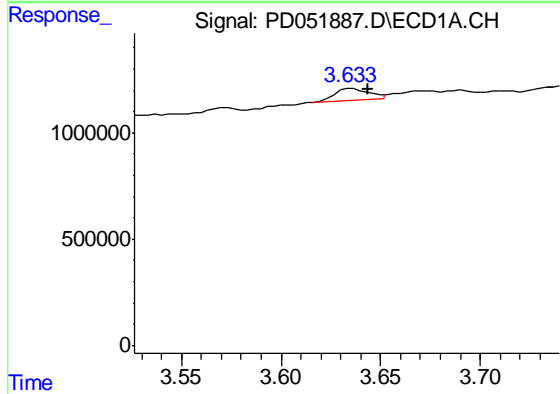
R.T.: 3.223 min
 Delta R.T.: -0.001 min
 Response: 29357828
 Conc: 22.14 ng/ml

Instrument :
 ECD_D
 ClientSampled :
 W-1



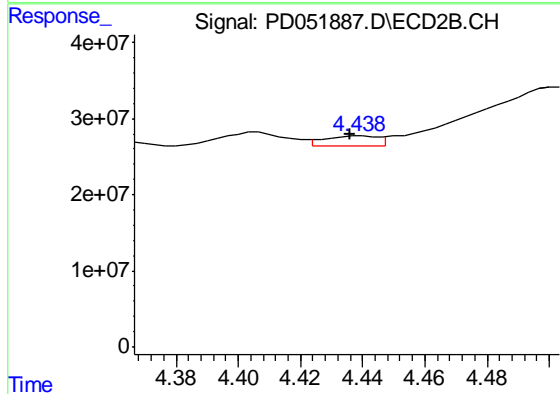
#1 Tetrachloro-m-xylene

R.T.: 4.044 min
 Delta R.T.: 0.000 min
 Response: 607660684
 Conc: 21.19 ng/ml



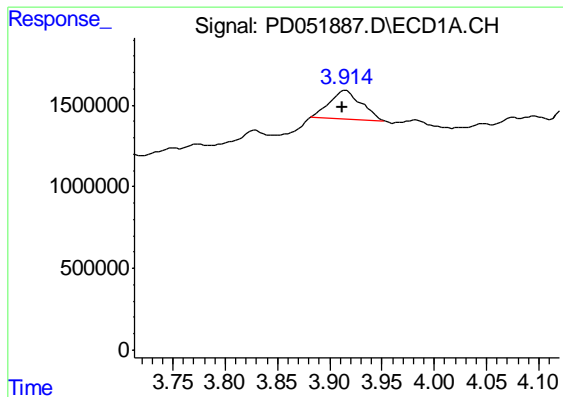
#2 alpha-BHC

R.T.: 3.635 min
 Delta R.T.: -0.008 min
 Response: 674265
 Conc: 0.31 ng/ml



#2 alpha-BHC

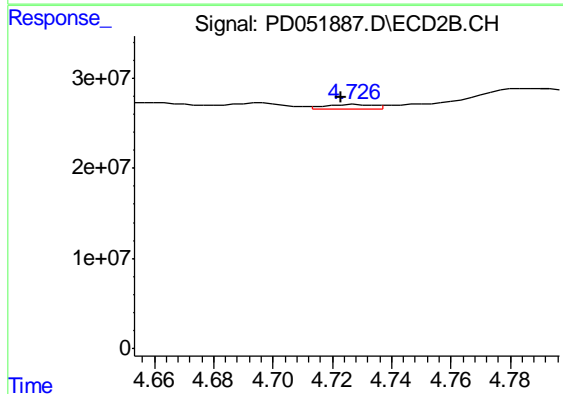
R.T.: 4.440 min
 Delta R.T.: 0.004 min
 Response: 15811707
 Conc: 0.36 ng/ml



#3 gamma-BHC (Lindane)

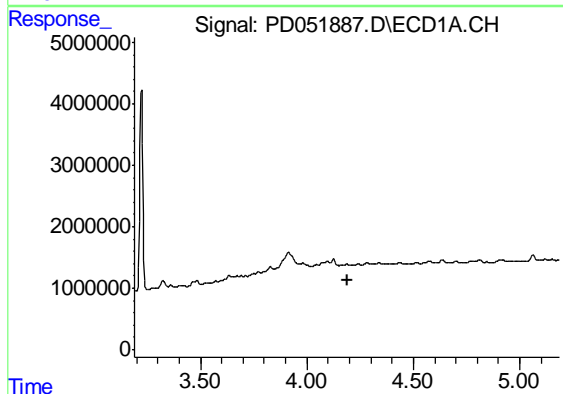
R.T.: 3.915 min
 Delta R.T.: 0.003 min
 Response: 3634168
 Conc: 1.74 ng/ml

Instrument :
 ECD_D
 ClientSampled :
 W-1



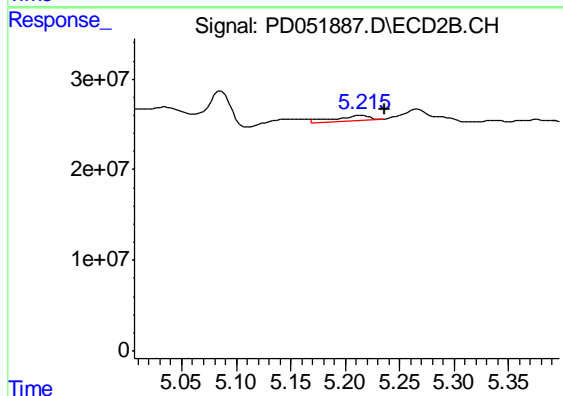
#3 gamma-BHC (Lindane)

R.T.: 4.728 min
 Delta R.T.: 0.005 min
 Response: 5854769
 Conc: 0.15 ng/ml



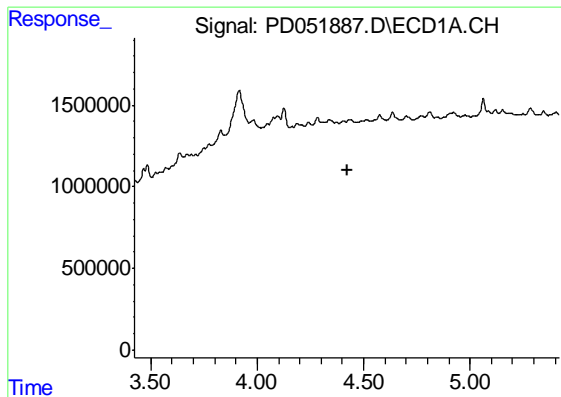
#4 Heptachlor

R.T.: 0.000 min
 Exp R.T. : 4.190 min
 Response: 0
 Conc: N.D.



#4 Heptachlor

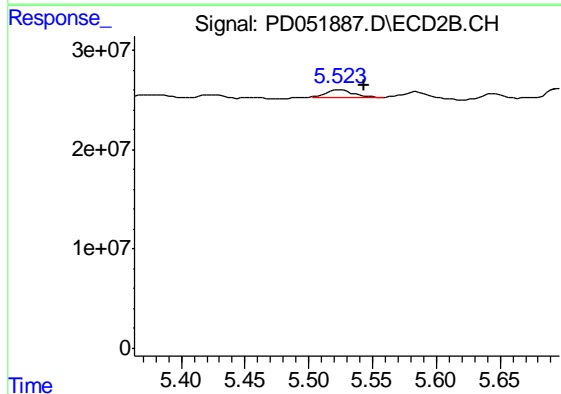
R.T.: 5.217 min
 Delta R.T.: -0.020 min
 Response: 14909674
 Conc: 0.39 ng/ml



#5 Aldrin

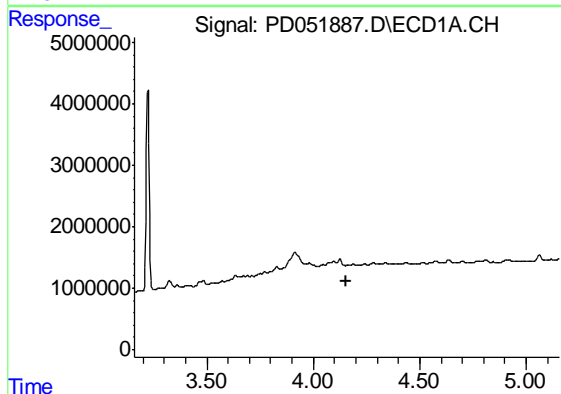
R.T.: 0.000 min
 Exp R.T. : 4.422 min
 Response: 0
 Conc: N.D.

Instrument :
 ECD_D
 ClientSampled :
 W-1



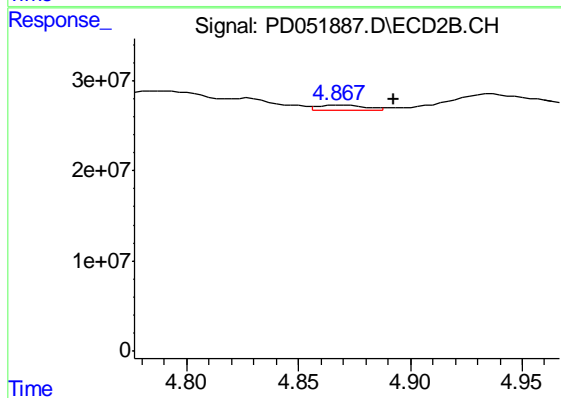
#5 Aldrin

R.T.: 5.524 min
 Delta R.T.: -0.019 min
 Response: 10257904
 Conc: 0.29 ng/ml



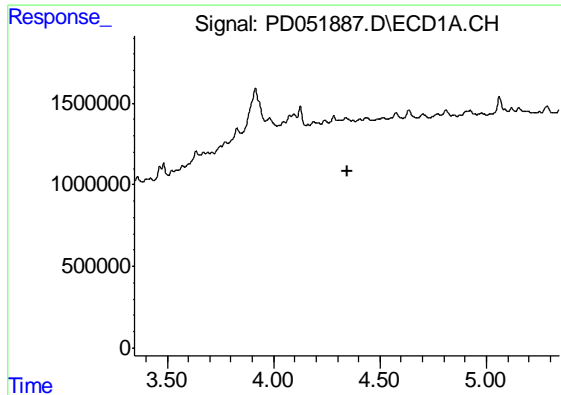
#6 beta-BHC

R.T.: 0.000 min
 Exp R.T. : 4.158 min
 Response: 0
 Conc: N.D.



#6 beta-BHC

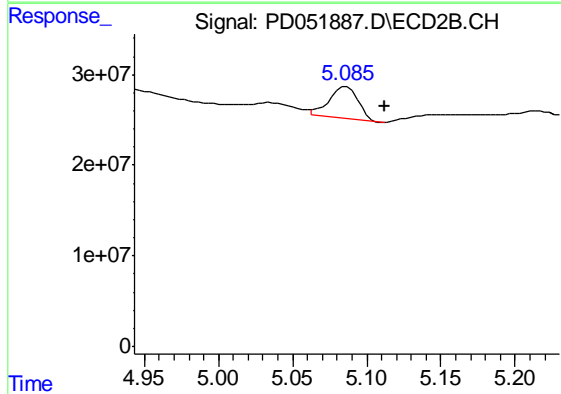
R.T.: 4.868 min
 Delta R.T.: -0.024 min
 Response: 9389276
 Conc: 0.52 ng/ml



#7 delta-BHC

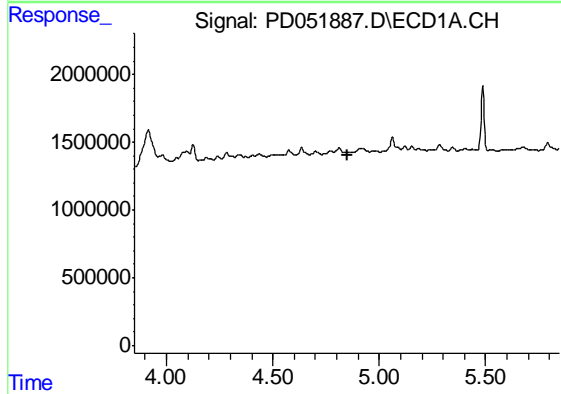
R.T.: 0.000 min
 Exp R.T. : 4.346 min
 Response: 0
 Conc: N.D.

Instrument :
 ECD_D
 ClientSampleId :
 W-1



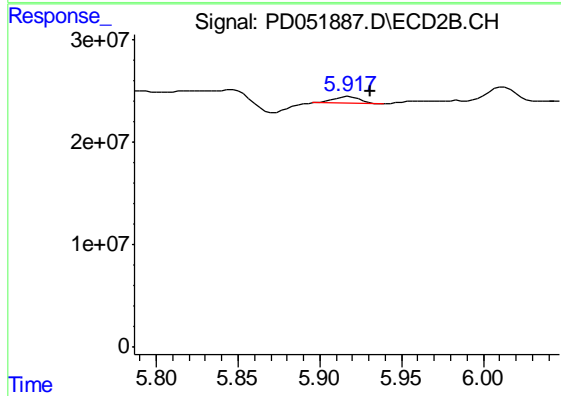
#7 delta-BHC

R.T.: 5.086 min
 Delta R.T.: -0.026 min
 Response: 47822194
 Conc: 1.39 ng/ml



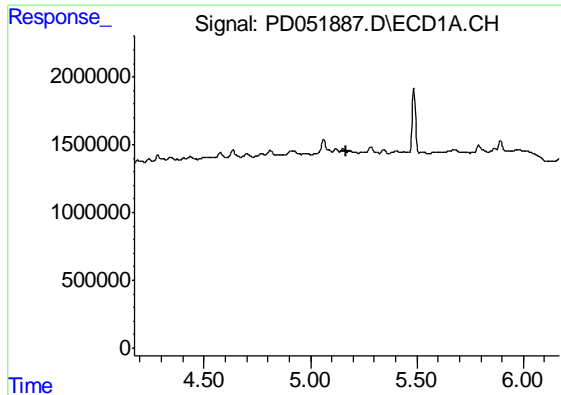
#8 Heptachlor epoxide

R.T.: 0.000 min
 Exp R.T. : 4.849 min
 Response: 0
 Conc: N.D.



#8 Heptachlor epoxide

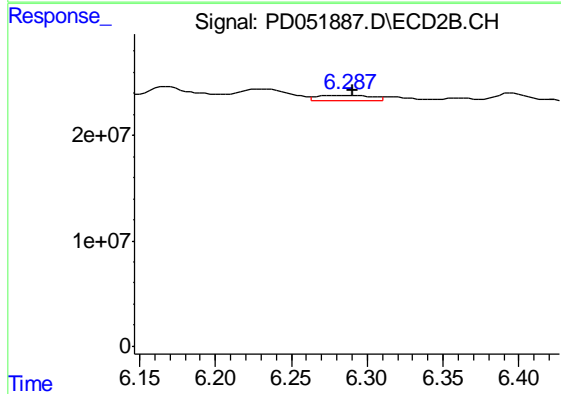
R.T.: 5.918 min
 Delta R.T.: -0.013 min
 Response: 8632566
 Conc: 0.27 ng/ml



#9 Endosulfan I

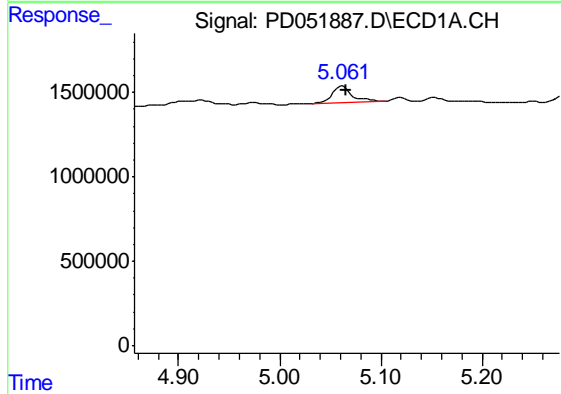
R.T.: 0.000 min
 Exp R.T. : 5.170 min
 Response: 0
 Conc: N.D.

Instrument :
 ECD_D
 ClientSampled :
 W-1



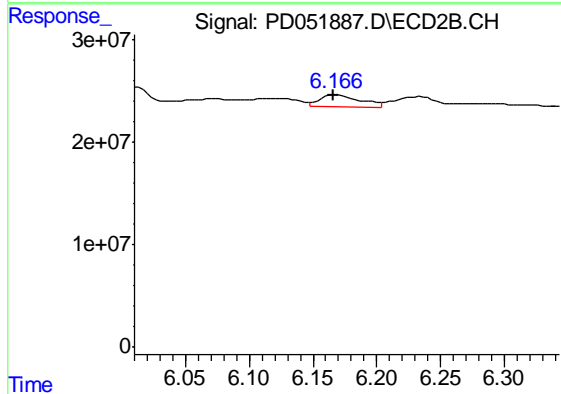
#9 Endosulfan I

R.T.: 6.288 min
 Delta R.T.: -0.002 min
 Response: 12669418
 Conc: 0.43 ng/ml



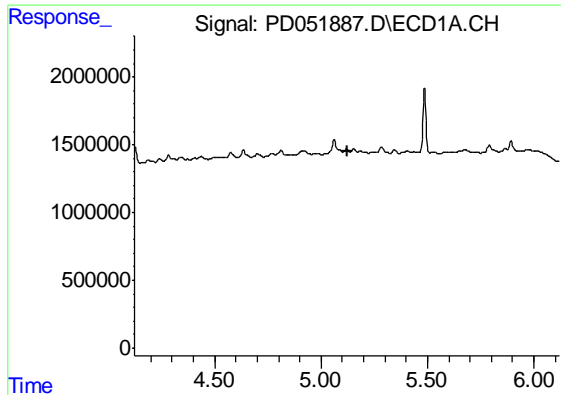
#10 gamma-Chlordane

R.T.: 5.062 min
 Delta R.T.: -0.004 min
 Response: 1351293
 Conc: 0.67 ng/ml



#10 gamma-Chlordane

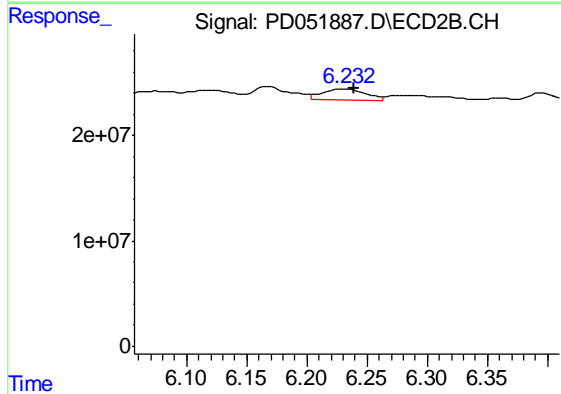
R.T.: 6.168 min
 Delta R.T.: 0.002 min
 Response: 26575248
 Conc: 0.83 ng/ml



#11 alpha-Chlordane

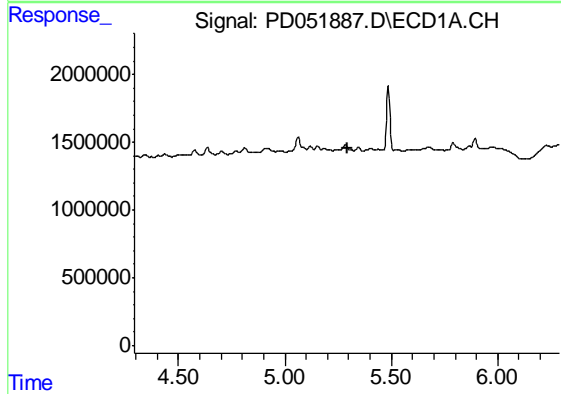
R.T.: 0.000 min
 Exp R.T. : 5.122 min
 Response: 0
 Conc: N.D.

Instrument :
 ECD_D
 ClientSampleId :
 W-1



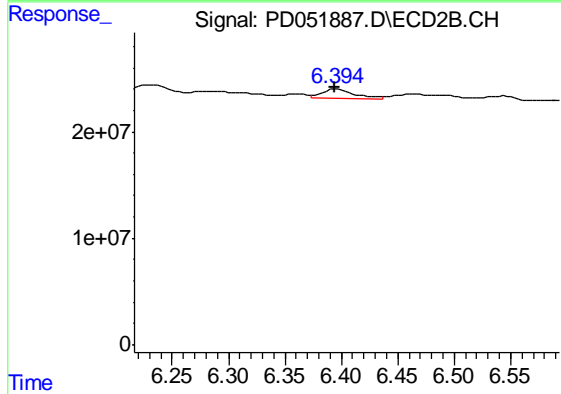
#11 alpha-Chlordane

R.T.: 6.234 min
 Delta R.T.: -0.006 min
 Response: 26964836
 Conc: 0.85 ng/ml



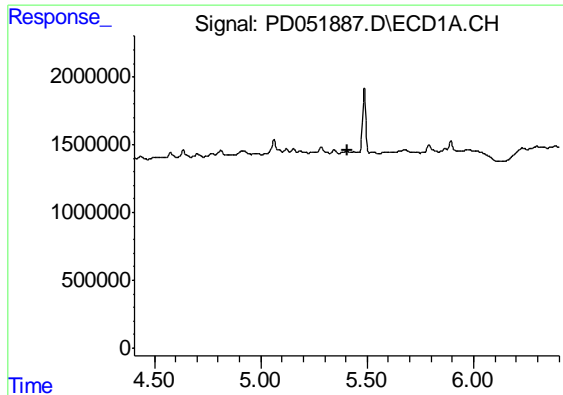
#12 4,4'-DDE

R.T.: 0.000 min
 Exp R.T. : 5.292 min
 Response: 0
 Conc: N.D.



#12 4,4'-DDE

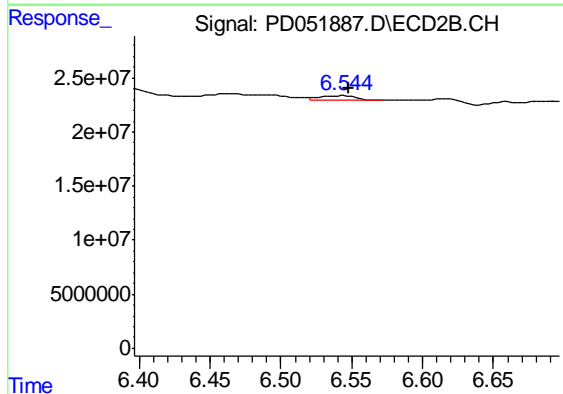
R.T.: 6.396 min
 Delta R.T.: 0.001 min
 Response: 17935472
 Conc: 0.58 ng/ml



#13 Dieldrin

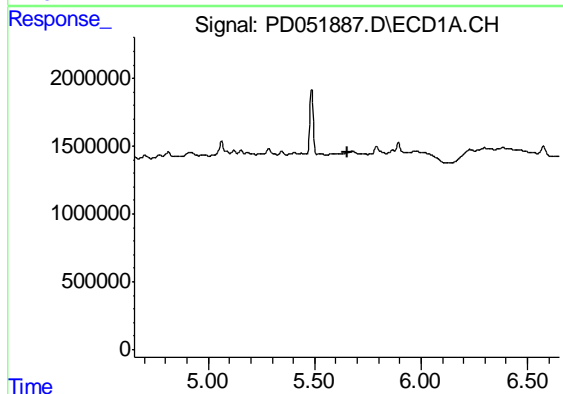
R.T.: 0.000 min
 Exp R.T. : 5.406 min
 Response: 0
 Conc: N.D.

Instrument :
 ECD_D
 ClientSampled :
 W-1



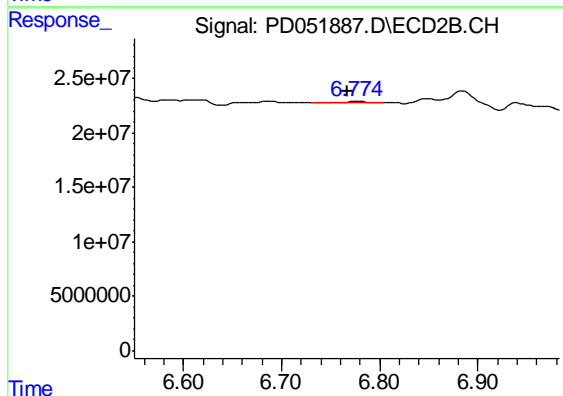
#13 Dieldrin

R.T.: 6.545 min
 Delta R.T.: -0.002 min
 Response: 6777513
 Conc: 0.22 ng/ml



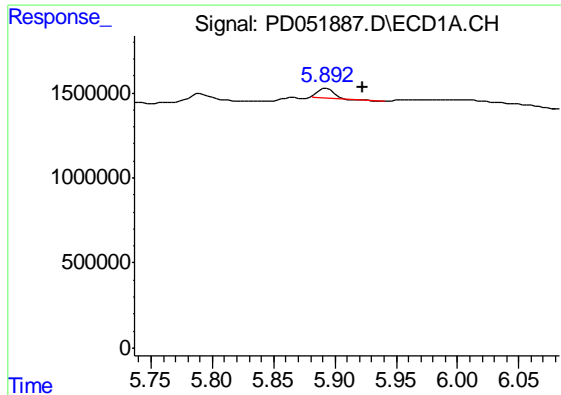
#14 Endrin

R.T.: 0.000 min
 Exp R.T. : 5.653 min
 Response: 0
 Conc: N.D.



#14 Endrin

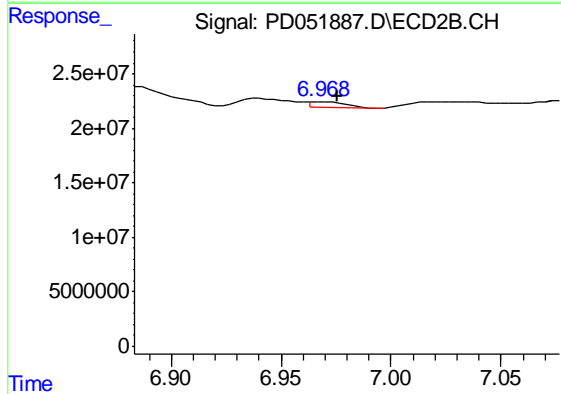
R.T.: 6.776 min
 Delta R.T.: 0.009 min
 Response: 3388833
 Conc: 0.13 ng/ml



#15 Endosulfan II

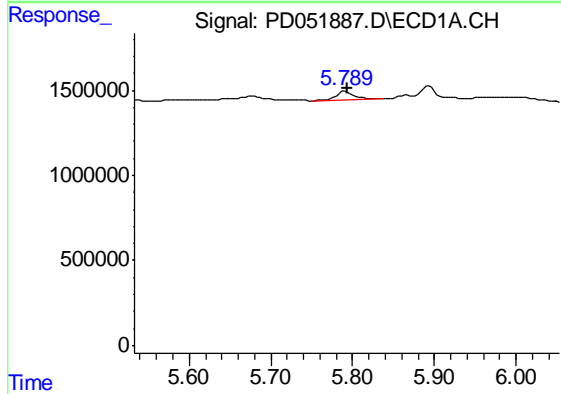
R.T.: 5.893 min
 Delta R.T.: -0.030 min
 Response: 478802
 Conc: 0.27 ng/ml

Instrument :
 ECD_D
 ClientSampled :
 W-1



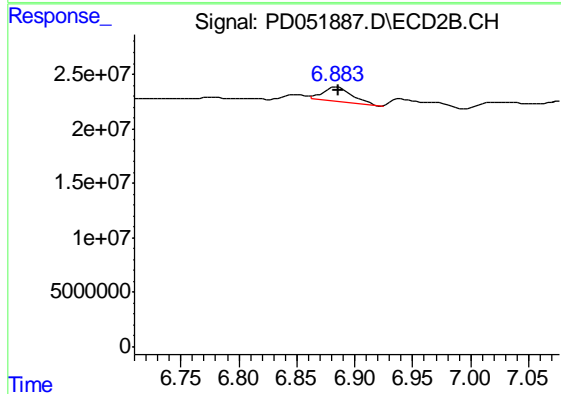
#15 Endosulfan II

R.T.: 6.970 min
 Delta R.T.: -0.005 min
 Response: 6534643
 Conc: 0.25 ng/ml



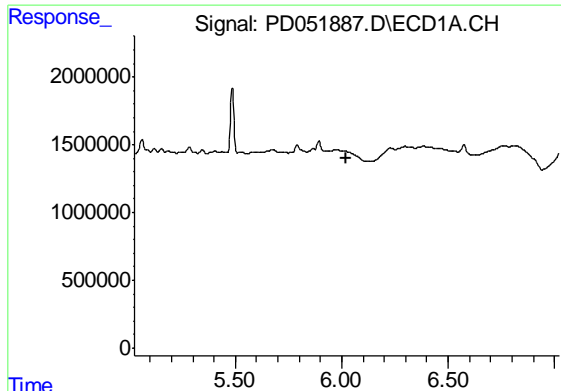
#16 4,4'-DDD

R.T.: 5.791 min
 Delta R.T.: -0.002 min
 Response: 803399
 Conc: 0.51 ng/ml



#16 4,4'-DDD

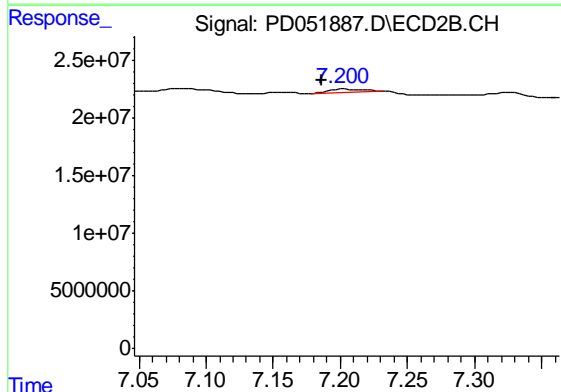
R.T.: 6.884 min
 Delta R.T.: -0.002 min
 Response: 23153745
 Conc: 0.94 ng/ml



#17 4,4'-DDT

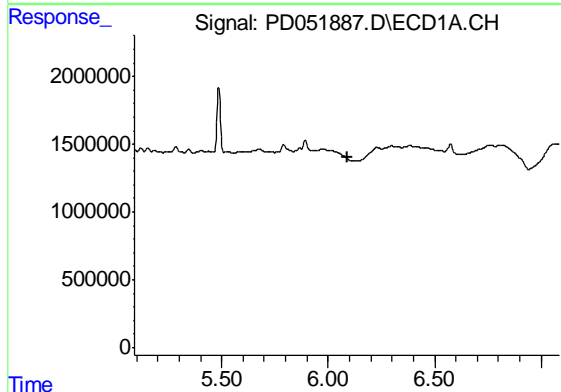
R.T.: 0.000 min
 Exp R.T. : 6.024 min
 Response: 0
 Conc: N.D.

Instrument :
 ECD_D
 ClientSampled :
 W-1



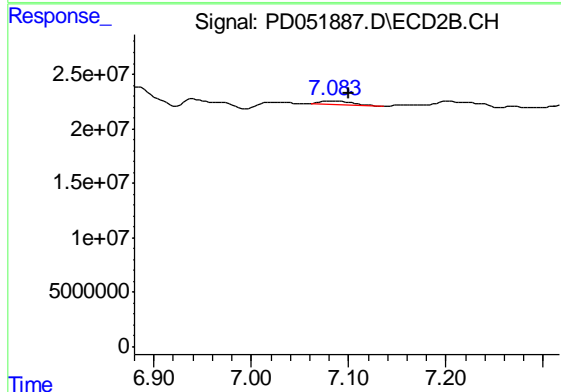
#17 4,4'-DDT

R.T.: 7.203 min
 Delta R.T.: 0.017 min
 Response: 4419969
 Conc: 0.22 ng/ml



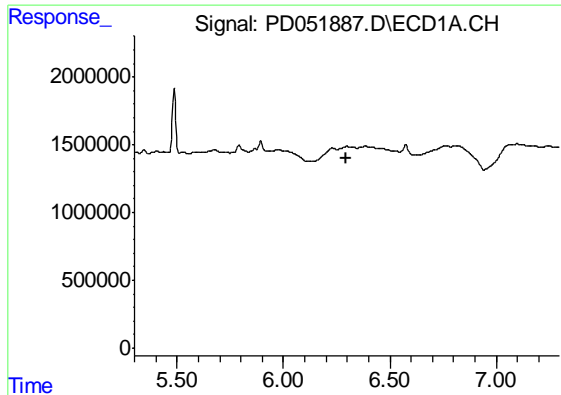
#18 Endrin aldehyde

R.T.: 0.000 min
 Exp R.T. : 6.089 min
 Response: 0
 Conc: N.D.



#18 Endrin aldehyde

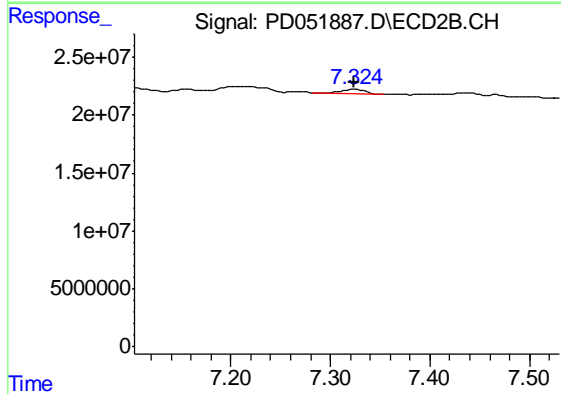
R.T.: 7.084 min
 Delta R.T.: -0.016 min
 Response: 7265340
 Conc: 0.34 ng/ml



#19 Endosulfan Sulfate

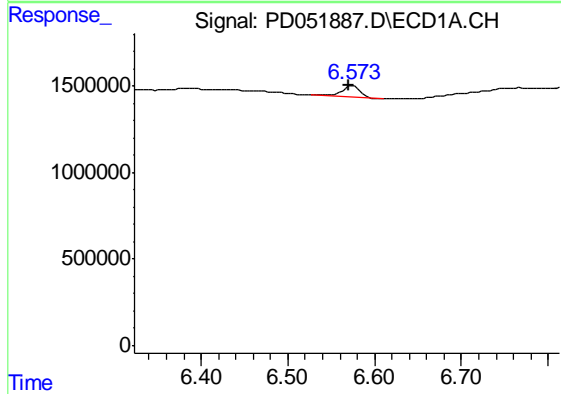
R.T.: 0.000 min
 Exp R.T. : 6.298 min
 Response: 0
 Conc: N.D.

Instrument :
 ECD_D
 ClientSampled :
 W-1



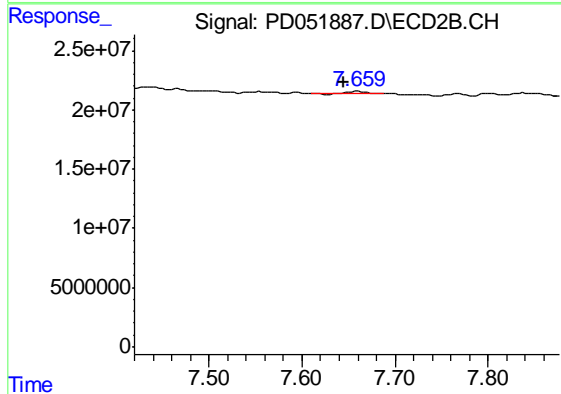
#19 Endosulfan Sulfate

R.T.: 7.325 min
 Delta R.T.: 0.001 min
 Response: 6091924
 Conc: 0.26 ng/ml



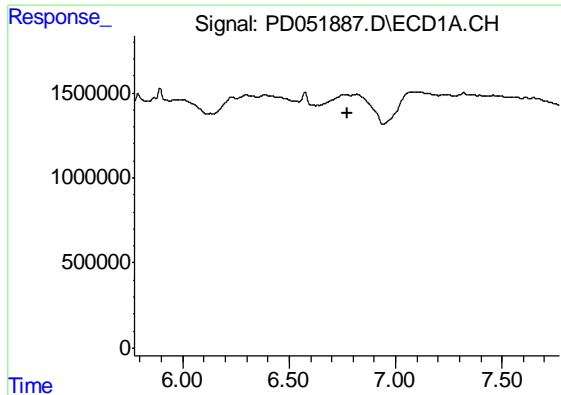
#20 Methoxychlor

R.T.: 6.575 min
 Delta R.T.: 0.005 min
 Response: 904126
 Conc: 1.02 ng/ml



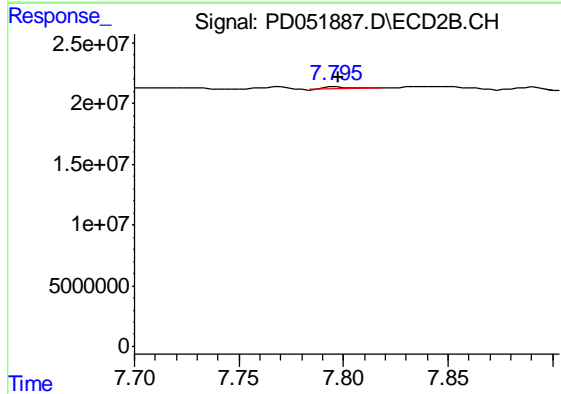
#20 Methoxychlor

R.T.: 7.660 min
 Delta R.T.: 0.015 min
 Response: 2218183
 Conc: 0.20 ng/ml

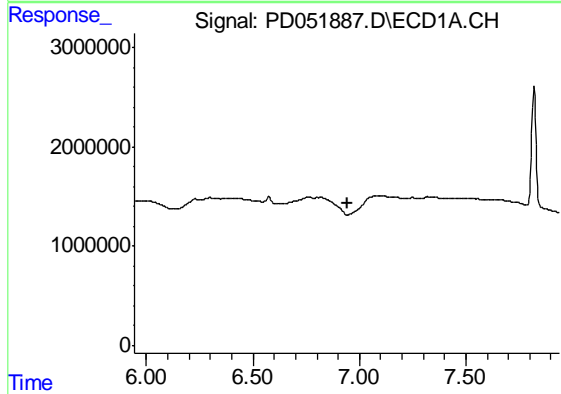


#21 Endrin ketone
 R.T.: 0.000 min
 Exp R.T. : 6.773 min
 Response: 0
 Conc: N.D.

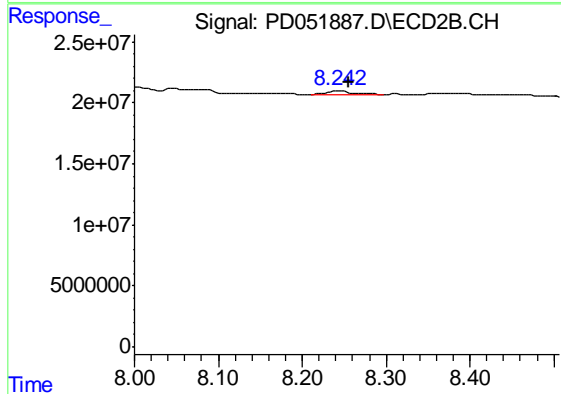
Instrument :
 ECD_D
 ClientSampled :
 W-1



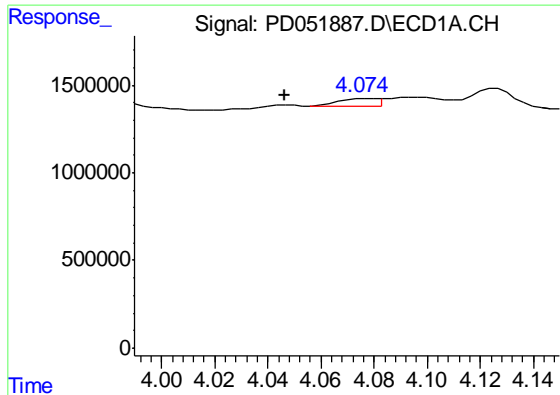
#21 Endrin ketone
 R.T.: 7.797 min
 Delta R.T.: -0.001 min
 Response: 2092648
 Conc: 0.09 ng/ml



#22 Mirex
 R.T.: 0.000 min
 Exp R.T. : 6.942 min
 Response: 0
 Conc: N.D.



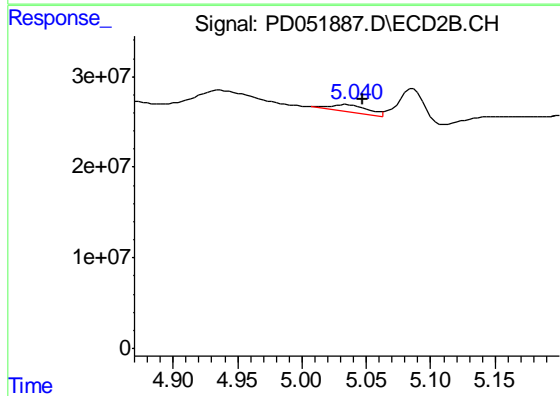
#22 Mirex
 R.T.: 8.244 min
 Delta R.T.: -0.012 min
 Response: 6092222
 Conc: 0.39 ng/ml



#23 Chlordane-1

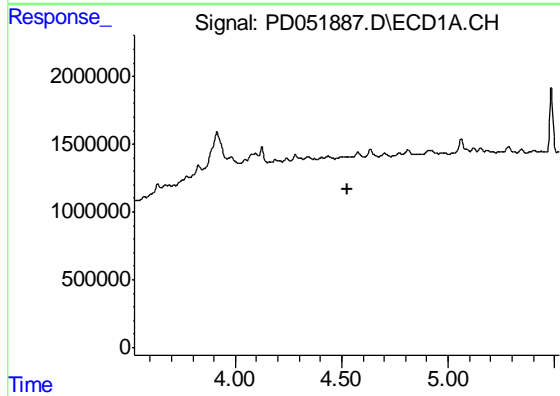
R.T.: 4.076 min
 Delta R.T.: 0.030 min
 Response: 450677
 Conc: 7.05 ng/ml

Instrument :
 ECD_D
 ClientSampled :
 W-1



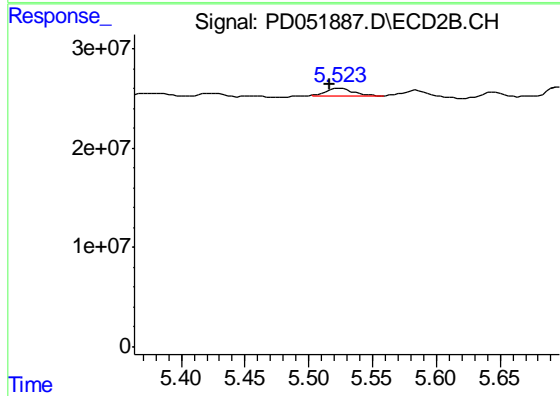
#23 Chlordane-1

R.T.: 5.035 min
 Delta R.T.: -0.012 min
 Response: 16407433
 Conc: 10.72 ng/ml



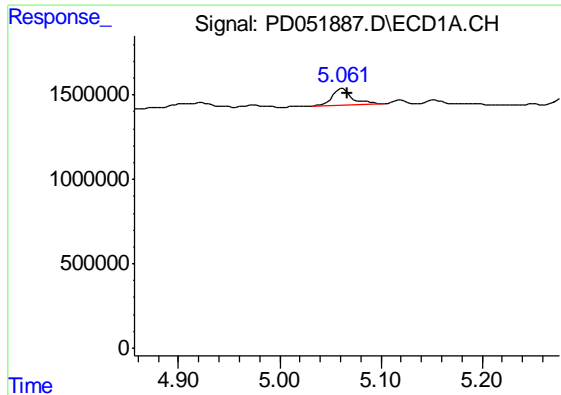
#24 Chlordane-2

R.T.: 0.000 min
 Exp R.T. : 4.526 min
 Response: 0
 Conc: N.D.



#24 Chlordane-2

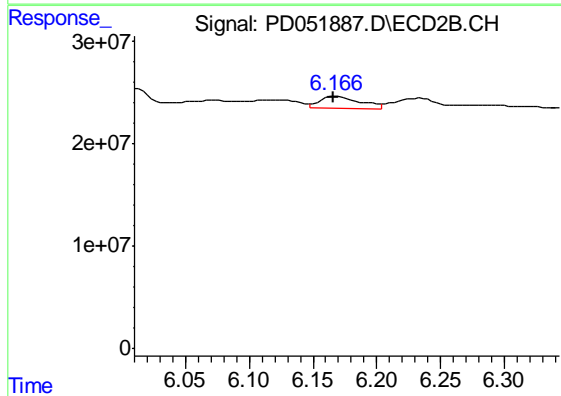
R.T.: 5.524 min
 Delta R.T.: 0.008 min
 Response: 10257904
 Conc: 7.23 ng/ml



#25 Chlordane-3

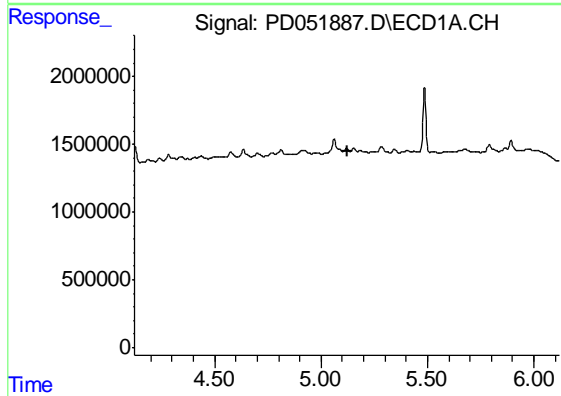
R.T.: 5.062 min
 Delta R.T.: -0.005 min
 Response: 1351293
 Conc: 5.81 ng/ml

Instrument :
 ECD_D
 ClientSampled :
 W-1



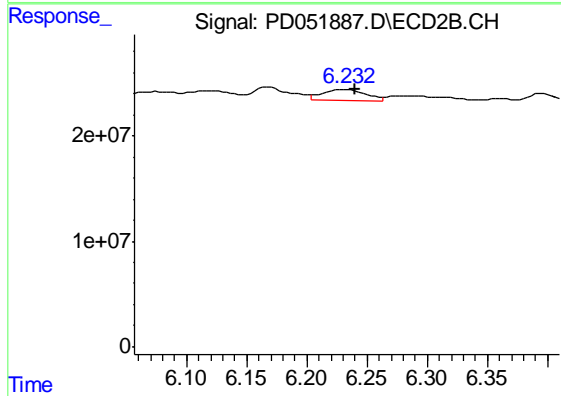
#25 Chlordane-3

R.T.: 6.168 min
 Delta R.T.: 0.001 min
 Response: 26575248
 Conc: 5.97 ng/ml



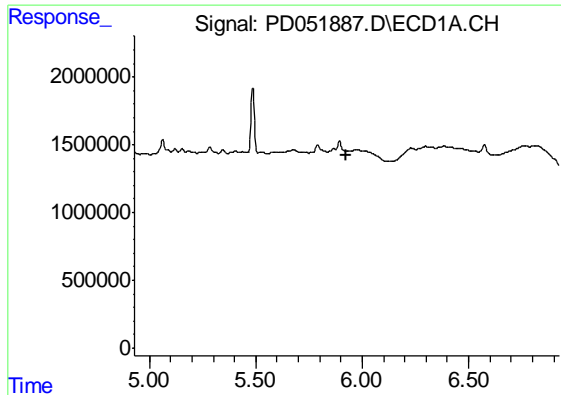
#26 Chlordane-4

R.T.: 0.000 min
 Exp R.T. : 5.122 min
 Response: 0
 Conc: N.D.



#26 Chlordane-4

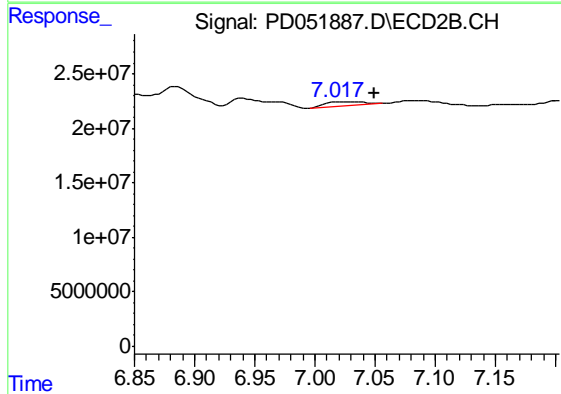
R.T.: 6.234 min
 Delta R.T.: -0.007 min
 Response: 26964836
 Conc: 5.15 ng/ml



#27 Chlordane-5

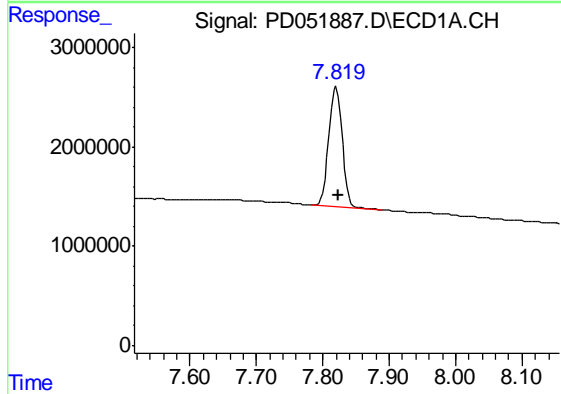
R.T.: 0.000 min
 Exp R.T. : 5.927 min
 Response: 0
 Conc: N.D.

Instrument :
 ECD_D
 ClientSampleId :
 W-1



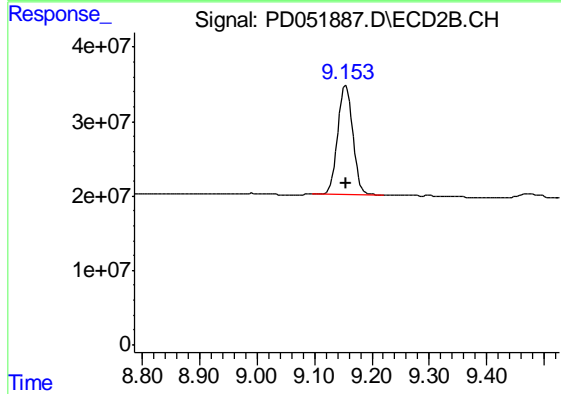
#27 Chlordane-5

R.T.: 7.020 min
 Delta R.T.: -0.029 min
 Response: 7670107
 Conc: 7.57 ng/ml



#28 Decachlorobiphenyl

R.T.: 7.821 min
 Delta R.T.: -0.003 min
 Response: 16951839
 Conc: 14.91 ng/ml



#28 Decachlorobiphenyl

R.T.: 9.154 min
 Delta R.T.: 0.000 min
 Response: 270236208
 Conc: 14.79 ng/ml