

Data Path : Z:\pestpcbsrv\HPCHEM1\ECD_D\Data\PD031922\
 Data File : PD068677.D
 Signal(s) : Signal #1: ECD1A.ch Signal #2: ECD2B.ch
 Acq On : 18 Mar 2022 08:47
 Operator : AR\AJ
 Sample : HEXANE
 Misc :
 ALS Vial : 1 Sample Multiplier: 1

Instrument :
 ECD_D
ClientSampleId :
 HEXANE

Integration File signal 1: autoint1.e
 Integration File signal 2: autoint2.e
 Quant Time: Mar 19 00:40:46 2022
 Quant Method : Z:\pestpcbsrv\HPCHEM1\ECD_D\Method\PD031222.M
 Quant Title : GC Extractables
 QLast Update : Mon Mar 14 03:30:32 2022
 Response via : Initial Calibration
 Integrator: ChemStation

Volume Inj. : 2 µl
 Signal #1 Phase : ZB-MR2 Signal #2 Phase: ZB-MR1
 Signal #1 Info : 30M x 0.32mm x0.2 Signal #2 Info : 30M x 0.32mm x 0.50µm

| Compound | RT#1 | RT#2 | Resp#1 | Resp#2 | ng/ml | ng/ml |
|-----------------------------|------|------|--------|--------|-------|-------|
| ----- | | | | | | |
| System Monitoring Compounds | | | | | | |
| Target Compounds | | | | | | |
| ----- | | | | | | |

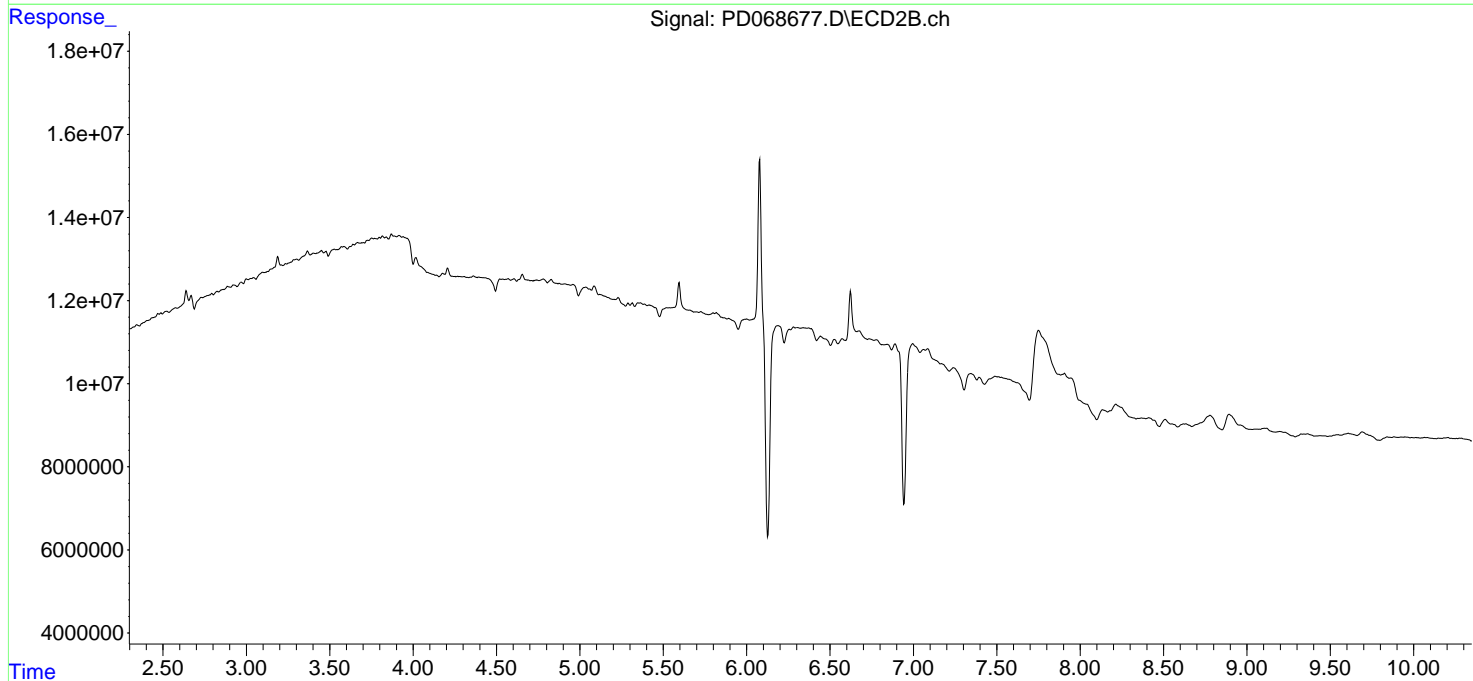
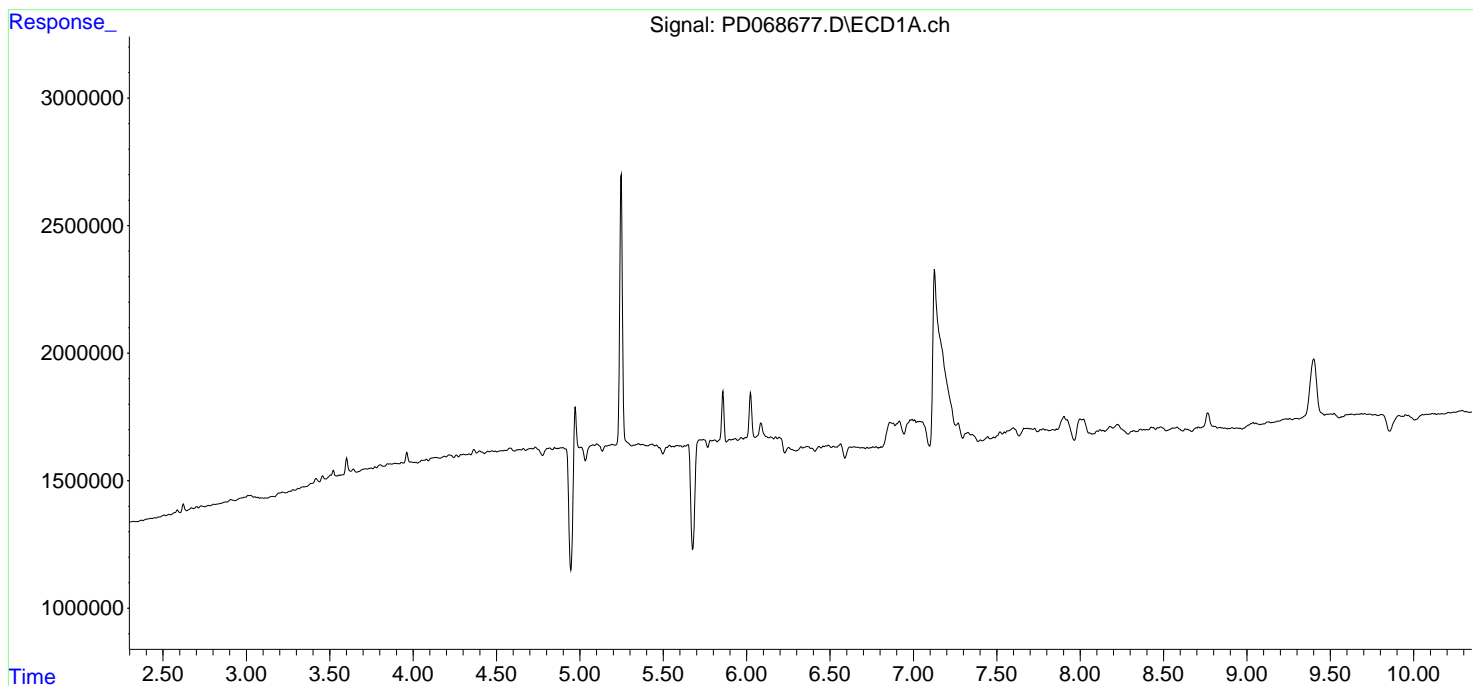
(f)=RT Delta > 1/2 Window (#)=Amounts differ by > 25% (m)=manual int.

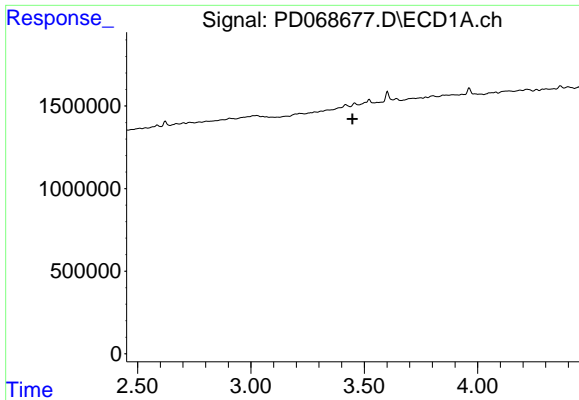
Data Path : Z:\pestpcbsrv\HPCHEM1\ECD_D\Data\PD031922\
 Data File : PD068677.D
 Signal(s) : Signal #1: ECD1A.ch Signal #2: ECD2B.ch
 Acq On : 18 Mar 2022 08:47
 Operator : AR\AJ
 Sample : HEXANE
 Misc :
 ALS Vial : 1 Sample Multiplier: 1

Instrument :
 ECD_D
 ClientSampleId :
 HEXANE

Integration File signal 1: autoint1.e
 Integration File signal 2: autoint2.e
 Quant Time: Mar 19 00:40:46 2022
 Quant Method : Z:\pestpcbsrv\HPCHEM1\ECD_D\Method\PD031222.M
 Quant Title : GC Extractables
 QLast Update : Mon Mar 14 03:30:32 2022
 Response via : Initial Calibration
 Integrator: ChemStation

Volume Inj. : 2 µl
 Signal #1 Phase : ZB-MR2 Signal #2 Phase: ZB-MR1
 Signal #1 Info : 30M x 0.32mm x0.2 Signal #2 Info : 30M x 0.32mm x 0.50µm

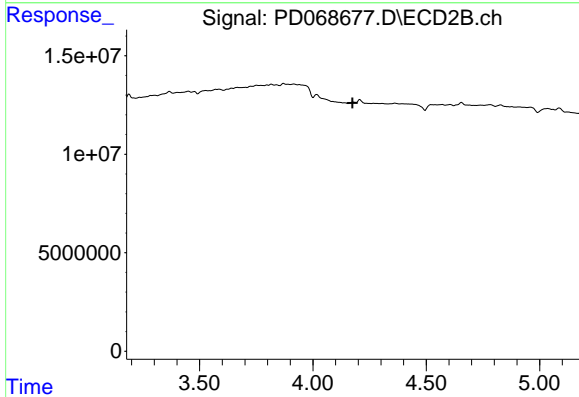




#1 Tetrachloro-m-xylene

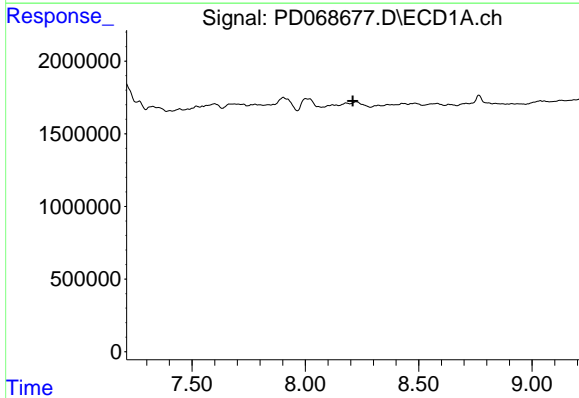
R.T.: 0.000 min
 Exp R.T. : 3.448 min
 Response: 0
 Conc: N.D.

Instrument :
 ECD_D
 ClientSampleId :
 HEXANE



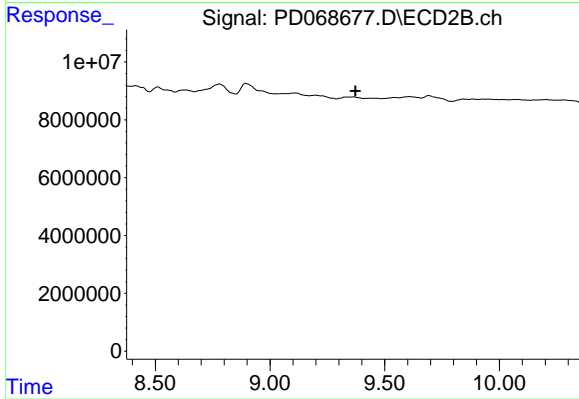
#1 Tetrachloro-m-xylene

R.T.: 0.000 min
 Exp R.T. : 4.175 min
 Response: 0
 Conc: N.D.



#28 Decachlorobiphenyl

R.T.: 0.000 min
 Exp R.T. : 8.210 min
 Response: 0
 Conc: N.D.



#28 Decachlorobiphenyl

R.T.: 0.000 min
 Exp R.T. : 9.373 min
 Response: 0
 Conc: N.D.