

Data Path : Z:\pestpcbsrv\HPCHEM1\ECD\_D\Data\PD031922\  
 Data File : PD068686.D  
 Signal(s) : Signal #1: ECD1A.ch Signal #2: ECD2B.ch  
 Acq On : 18 Mar 2022 12:01  
 Operator : AR\AJ  
 Sample : N1645-02  
 Misc : PEST LOQ .5PPB  
 ALS Vial : 10 Sample Multiplier: 1

Instrument :  
 ECD\_D  
 ClientSampleId :  
 LOQ-SOIL-02-QT1-2022

Integration File signal 1: autoint1.e  
 Integration File signal 2: autoint2.e  
 Quant Time: Mar 19 00:44:01 2022  
 Quant Method : Z:\pestpcbsrv\HPCHEM1\ECD\_D\Method\PD031222.M  
 Quant Title : GC Extractables  
 QLast Update : Mon Mar 14 03:30:32 2022  
 Response via : Initial Calibration  
 Integrator: ChemStation

Volume Inj. : 2 µl  
 Signal #1 Phase : ZB-MR2 Signal #2 Phase: ZB-MR1  
 Signal #1 Info : 30M x 0.32mm x0.2 Signal #2 Info : 30M x 0.32mm x 0.50µm

Compound	RT#1	RT#2	Resp#1	Resp#2	ng/ml	ng/ml
System Monitoring Compounds						
1) SA Tetrachlo...	3.449	4.175	26390308	216.6E6	21.735	22.659
28) SA Decachlor...	8.208	9.370	28677750	133.8E6	22.699	23.604
Target Compounds						
2) A alpha-BHC	3.888	4.570	9018770	82870702	4.981	6.021
3) MA gamma-BHC...	4.172	4.861	8540778	76747369	5.115	6.138
4) MA Heptachlor	4.470	5.389	8852442	75128141	5.373	6.322
5) MB Aldrin	4.718	5.702	8872688	76715636	5.552	6.683
6) B beta-BHC	4.422	5.024	4297925	35069677	5.772	6.388
7) B delta-BHC	4.626	5.250	8496161	76637339	5.199	6.373
8) B Heptachlo...	5.162	6.090	8465920	68204922	5.661	6.531
9) A Endosulfan I	5.501	6.453	7836412	61102548	5.600	6.515
10) B gamma-Chl...	5.388	6.326	8695787	66924924	5.732	6.493
11) B alpha-Chl...	5.447	6.402	8615982	65536814	5.765	6.583
12) B 4,4'-DDE	5.613	6.551	7356697	59181543	5.377	6.386
13) MA Dieldrin	5.745	6.711	8259834	64256310	5.657	6.615
14) MA Endrin	6.003	6.931	7127385	48829461	5.411	6.311
15) B Endosulfa...	6.276	7.136	7737632	53704078	6.208	7.105
16) A 4,4'-DDD	6.130	7.042	6694967	49190926	5.677	6.661
17) MA 4,4'-DDT	6.371	7.345	5726336	42109060	4.764	5.732
18) B Endrin al...	6.446	7.260	6698912	45088265	6.748	7.450
19) B Endosulfa...	6.659	7.485	7738938	48706934	6.052	6.622
20) A Methoxychlor	6.921	7.798	3760980	22118851	5.427	6.068
21) B Endrin ke...	7.152	7.960	8761349	52623099	5.951	6.791
22) Mirex	7.337	8.426	7659352	37864512	6.463	6.908

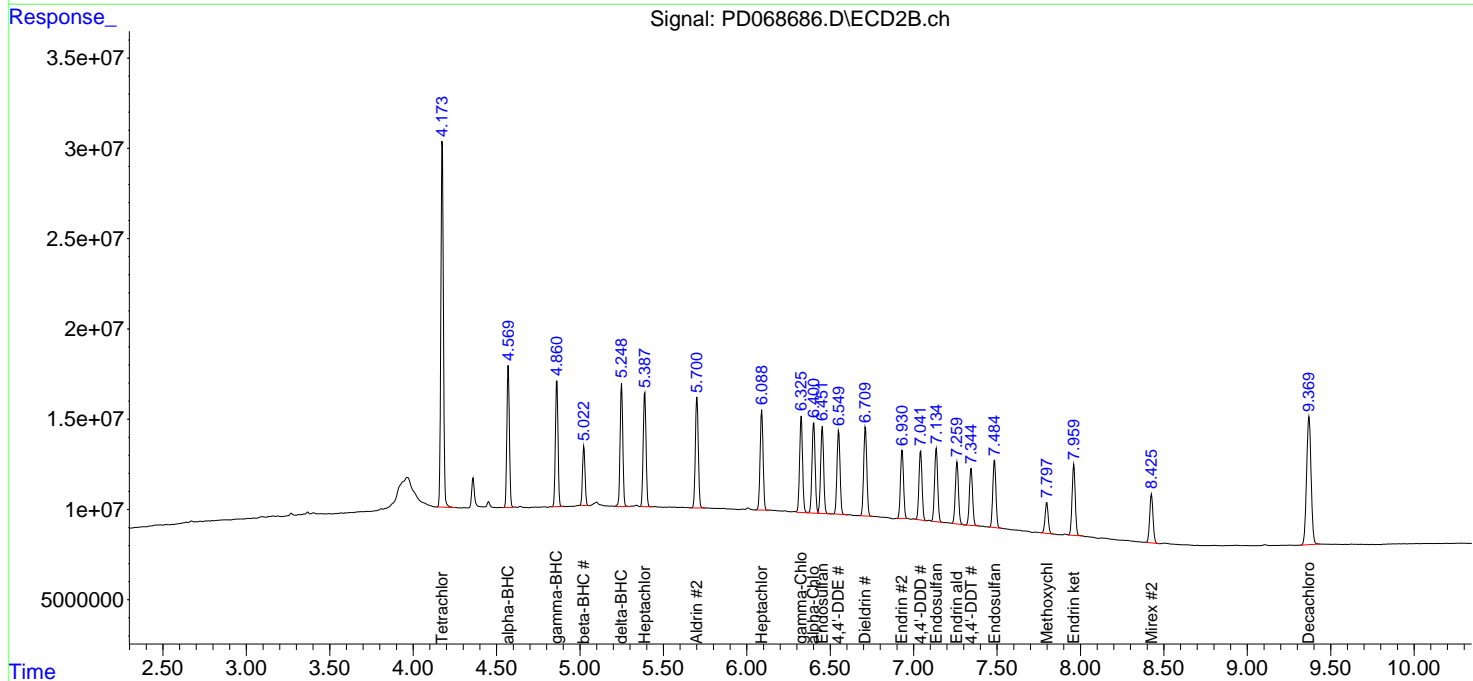
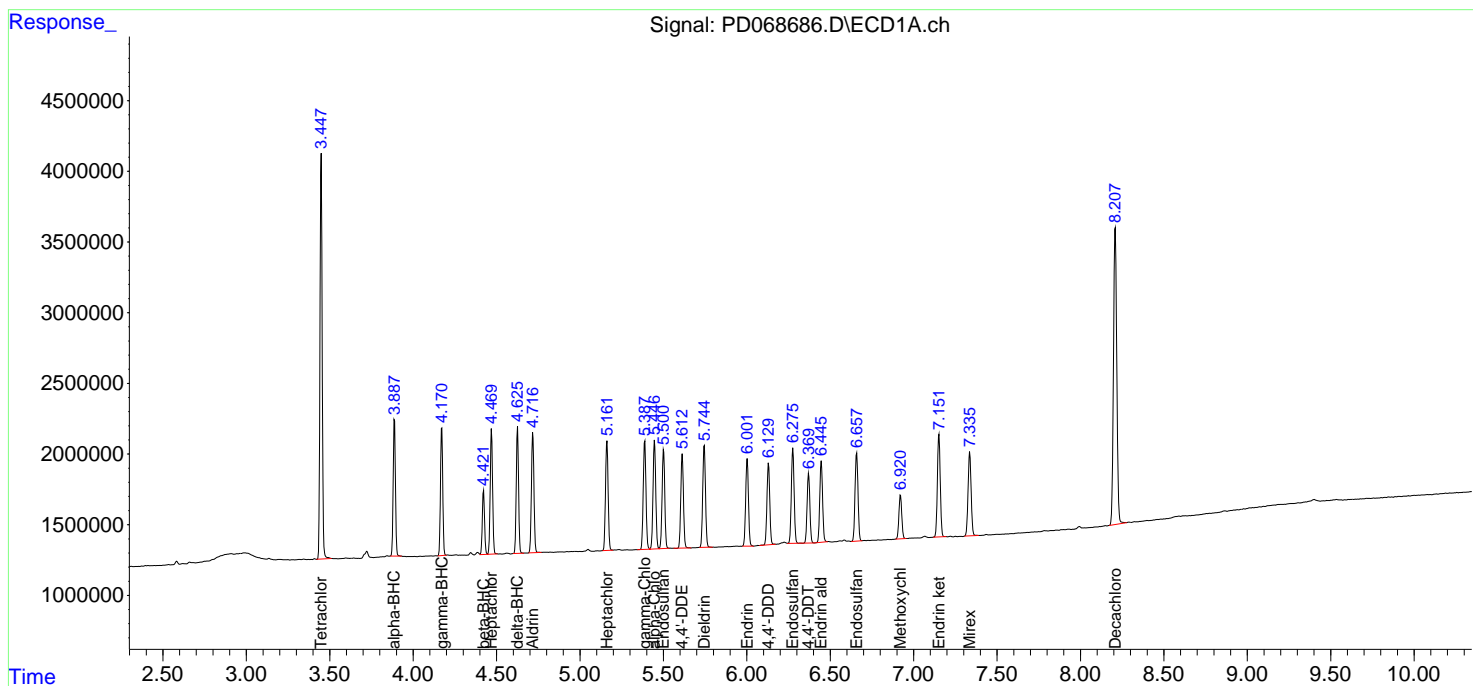
(f)=RT Delta > 1/2 Window (#)=Amounts differ by > 25% (m)=manual int.

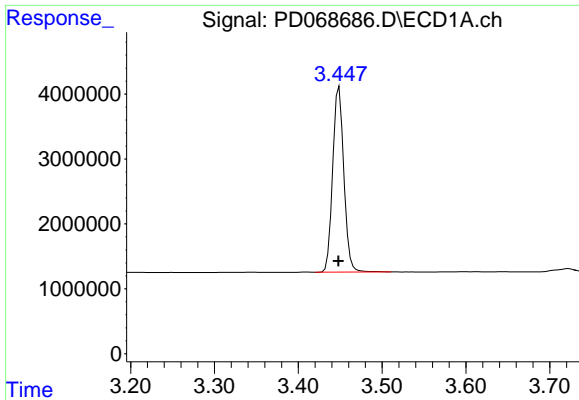
Data Path : Z:\pestpcbsrv\HPCHEM1\ECD\_D\Data\PD031922\  
 Data File : PD068686.D  
 Signal(s) : Signal #1: ECD1A.ch Signal #2: ECD2B.ch  
 Acq On : 18 Mar 2022 12:01  
 Operator : AR\AJ  
 Sample : N1645-02  
 Misc : PEST LOQ .5PPB  
 ALS Vial : 10 Sample Multiplier: 1

Instrument :  
 ECD\_D  
 ClientSampleId :  
 LOQ-SOIL-02-QT1-2022

Integration File signal 1: autoint1.e  
 Integration File signal 2: autoint2.e  
 Quant Time: Mar 19 00:44:01 2022  
 Quant Method : Z:\pestpcbsrv\HPCHEM1\ECD\_D\Method\PD031222.M  
 Quant Title : GC Extractables  
 QLast Update : Mon Mar 14 03:30:32 2022  
 Response via : Initial Calibration  
 Integrator: ChemStation

Volume Inj. : 2 µl  
 Signal #1 Phase : ZB-MR2 Signal #2 Phase: ZB-MR1  
 Signal #1 Info : 30M x 0.32mm x0.2 Signal #2 Info : 30M x 0.32mm x 0.50µm

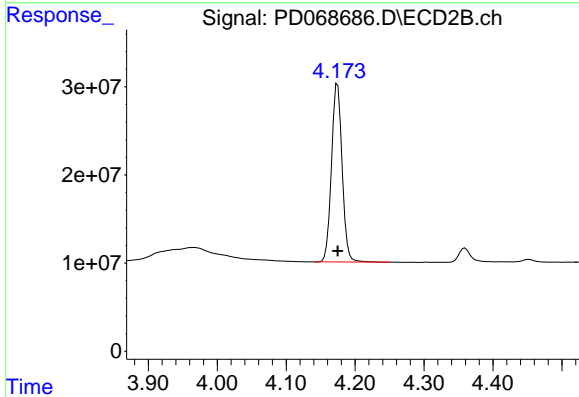




#1 Tetrachloro-m-xylene

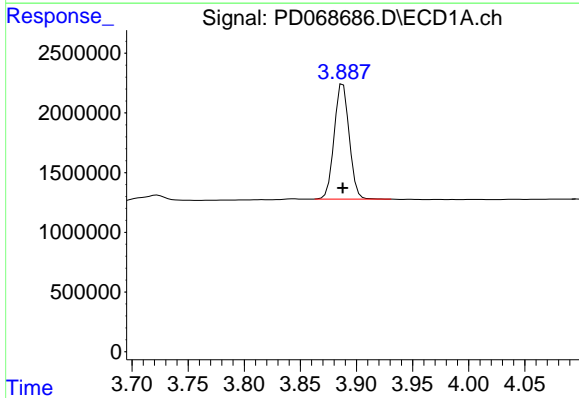
R.T.: 3.449 min  
 Delta R.T.: 0.000 min  
 Response: 26390308  
 Conc: 21.74 ng/ml

Instrument :  
 ECD\_D  
 ClientSampleId :  
 LOQ-SOIL-02-QT1-2022



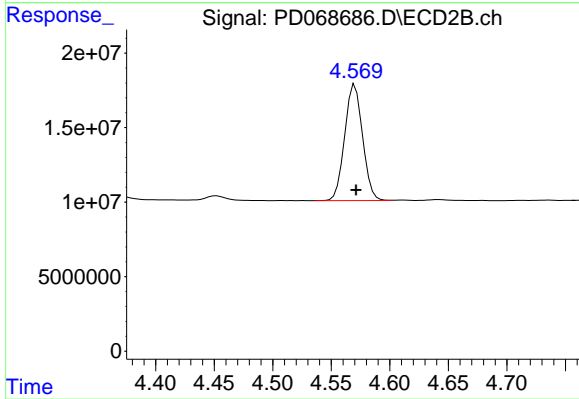
#1 Tetrachloro-m-xylene

R.T.: 4.175 min  
 Delta R.T.: 0.000 min  
 Response: 216632264  
 Conc: 22.66 ng/ml



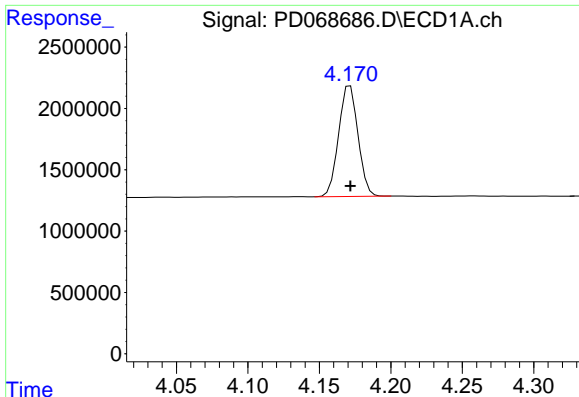
#2 alpha-BHC

R.T.: 3.888 min  
 Delta R.T.: 0.000 min  
 Response: 9018770  
 Conc: 4.98 ng/ml



#2 alpha-BHC

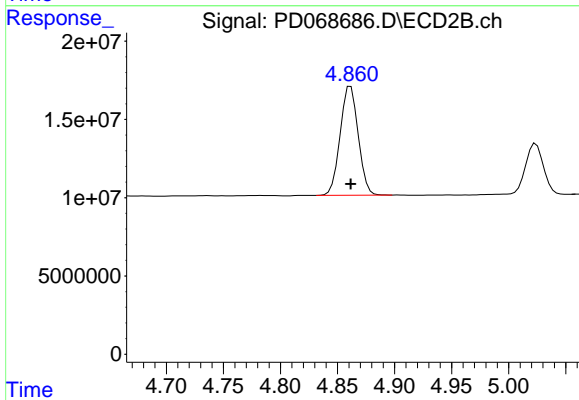
R.T.: 4.570 min  
 Delta R.T.: 0.000 min  
 Response: 82870702  
 Conc: 6.02 ng/ml



#3 gamma-BHC (Lindane)

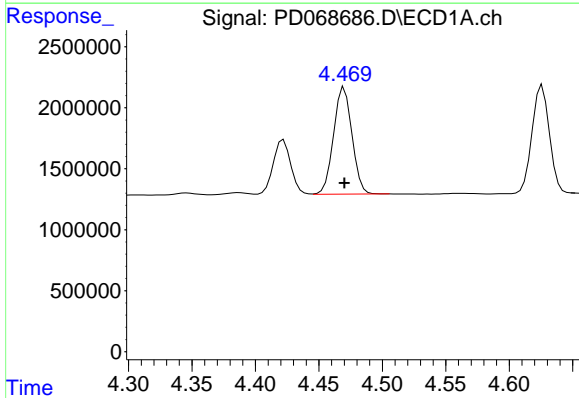
R.T.: 4.172 min  
 Delta R.T.: 0.000 min  
 Response: 8540778  
 Conc: 5.11 ng/ml

Instrument :  
 ECD\_D  
 ClientSampleId :  
 LOQ-SOIL-02-QT1-2022



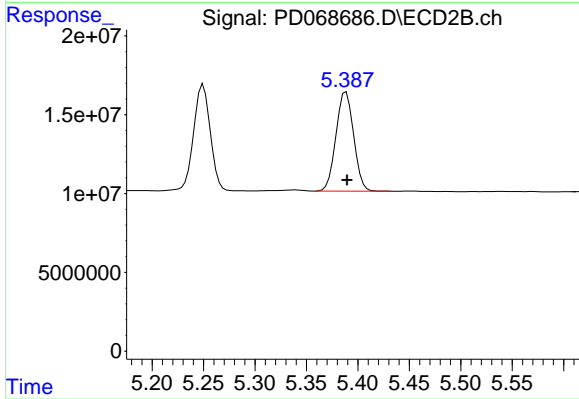
#3 gamma-BHC (Lindane)

R.T.: 4.861 min  
 Delta R.T.: 0.000 min  
 Response: 76747369  
 Conc: 6.14 ng/ml



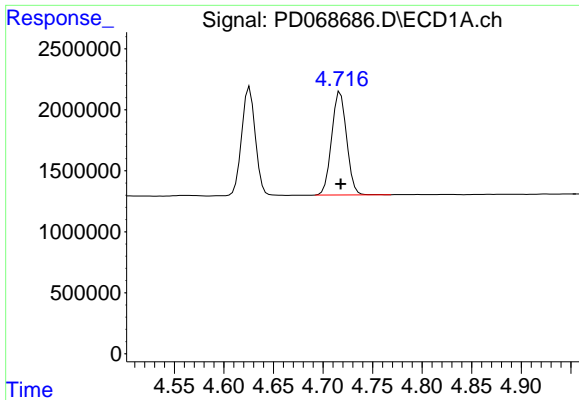
#4 Heptachlor

R.T.: 4.470 min  
 Delta R.T.: 0.000 min  
 Response: 8852442  
 Conc: 5.37 ng/ml



#4 Heptachlor

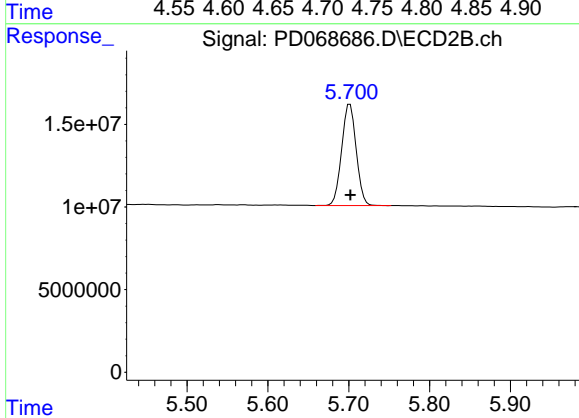
R.T.: 5.389 min  
 Delta R.T.: 0.000 min  
 Response: 75128141  
 Conc: 6.32 ng/ml



#5 Aldrin

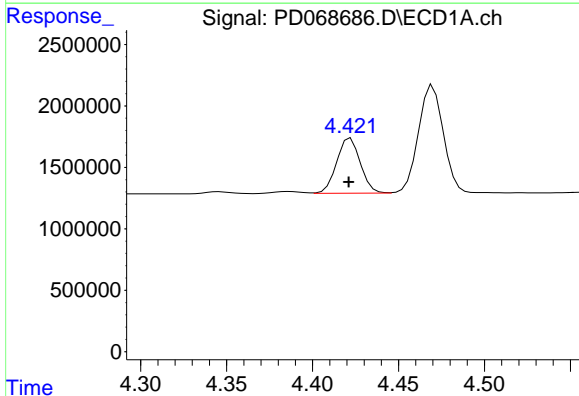
R.T.: 4.718 min  
 Delta R.T.: 0.000 min  
 Response: 8872688  
 Conc: 5.55 ng/ml

Instrument :  
 ECD\_D  
 ClientSampleId :  
 LOQ-SOIL-02-QT1-2022



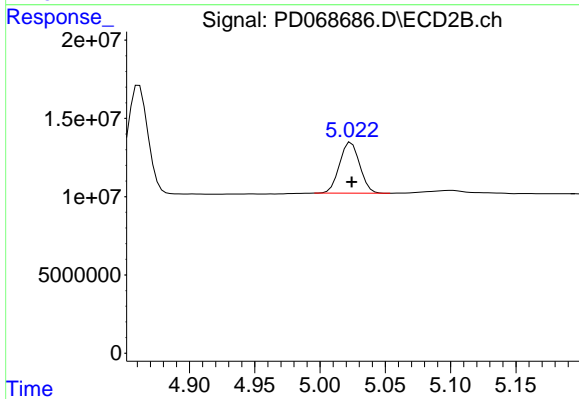
#5 Aldrin

R.T.: 5.702 min  
 Delta R.T.: 0.000 min  
 Response: 76715636  
 Conc: 6.68 ng/ml



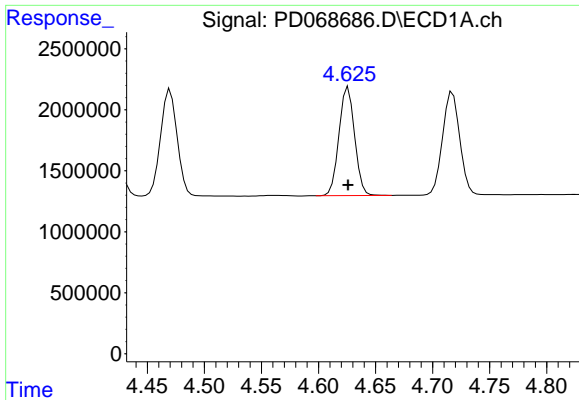
#6 beta-BHC

R.T.: 4.422 min  
 Delta R.T.: 0.001 min  
 Response: 4297925  
 Conc: 5.77 ng/ml



#6 beta-BHC

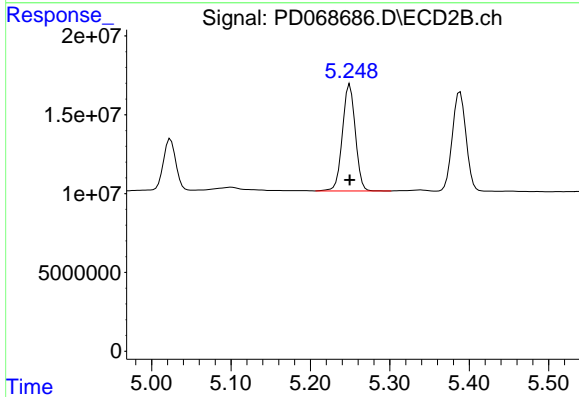
R.T.: 5.024 min  
 Delta R.T.: 0.000 min  
 Response: 35069677  
 Conc: 6.39 ng/ml



#7 delta-BHC

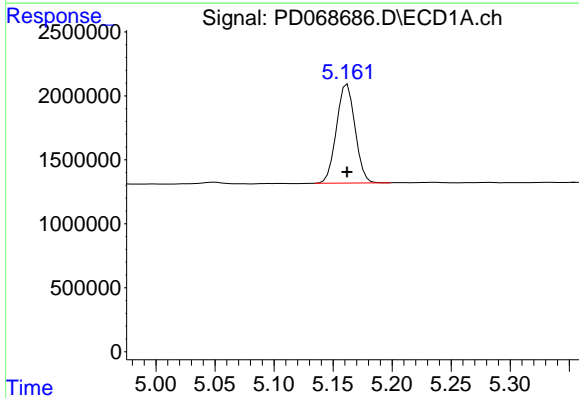
R.T.: 4.626 min  
 Delta R.T.: 0.000 min  
 Response: 8496161  
 Conc: 5.20 ng/ml

Instrument :  
 ECD\_D  
 ClientSampleId :  
 LOQ-SOIL-02-QT1-2022



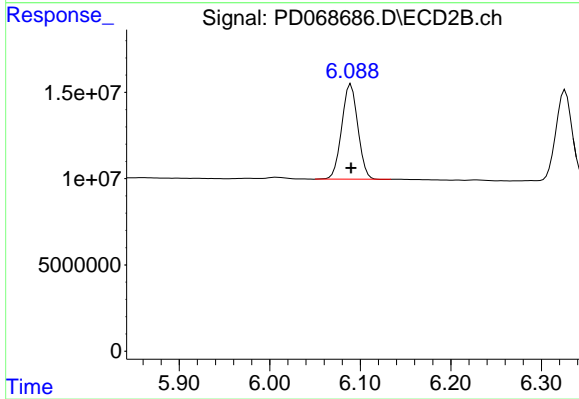
#7 delta-BHC

R.T.: 5.250 min  
 Delta R.T.: 0.000 min  
 Response: 76637339  
 Conc: 6.37 ng/ml



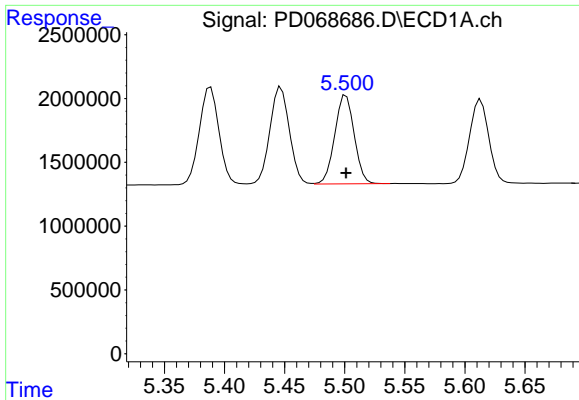
#8 Heptachlor epoxide

R.T.: 5.162 min  
 Delta R.T.: 0.000 min  
 Response: 8465920  
 Conc: 5.66 ng/ml



#8 Heptachlor epoxide

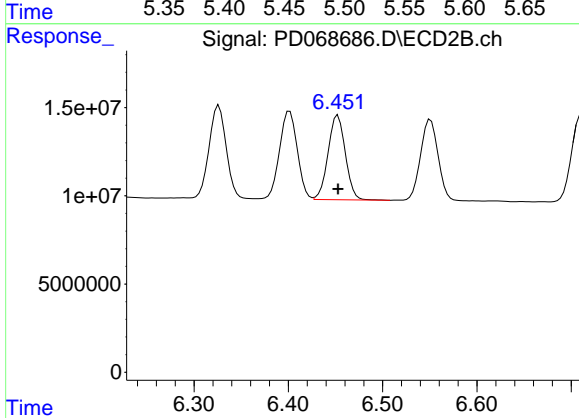
R.T.: 6.090 min  
 Delta R.T.: 0.000 min  
 Response: 68204922  
 Conc: 6.53 ng/ml



#9 Endosulfan I

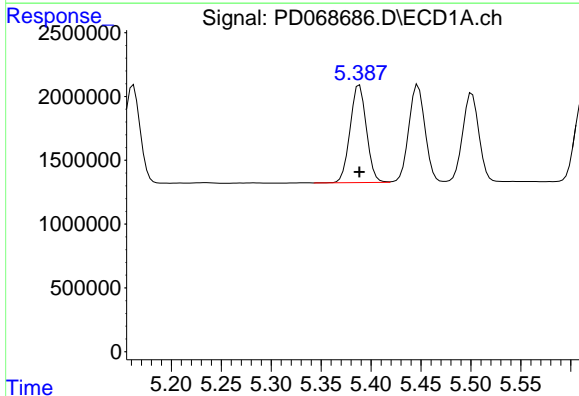
R.T.: 5.501 min  
 Delta R.T.: 0.000 min  
 Response: 7836412  
 Conc: 5.60 ng/ml

Instrument : ECD\_D  
 ClientSampleId : LOQ-SOIL-02-QT1-2022



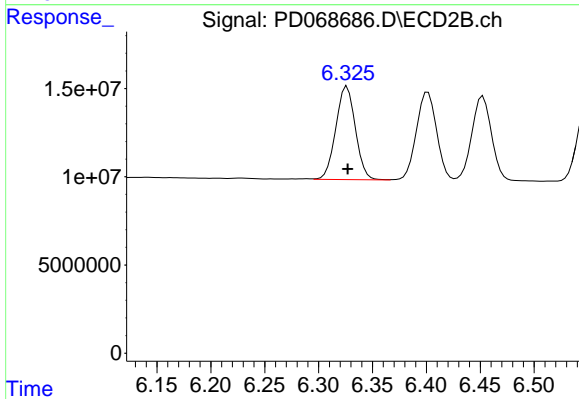
#9 Endosulfan I

R.T.: 6.453 min  
 Delta R.T.: 0.000 min  
 Response: 61102548  
 Conc: 6.52 ng/ml



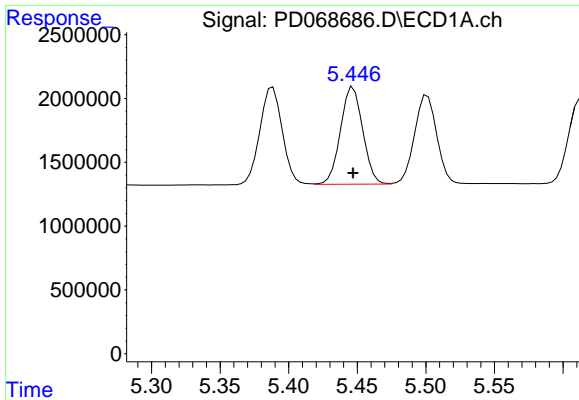
#10 gamma-Chlordane

R.T.: 5.388 min  
 Delta R.T.: 0.000 min  
 Response: 8695787  
 Conc: 5.73 ng/ml



#10 gamma-Chlordane

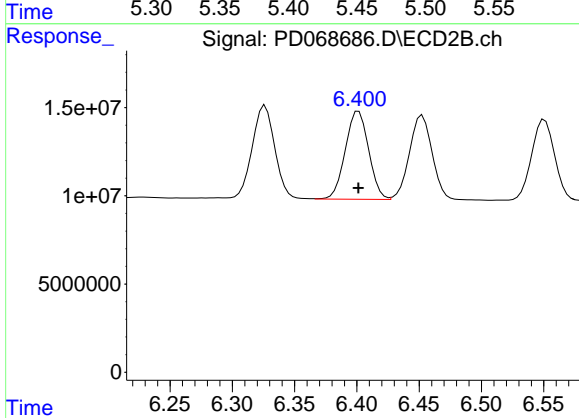
R.T.: 6.326 min  
 Delta R.T.: 0.000 min  
 Response: 66924924  
 Conc: 6.49 ng/ml



#11 alpha-Chlordane

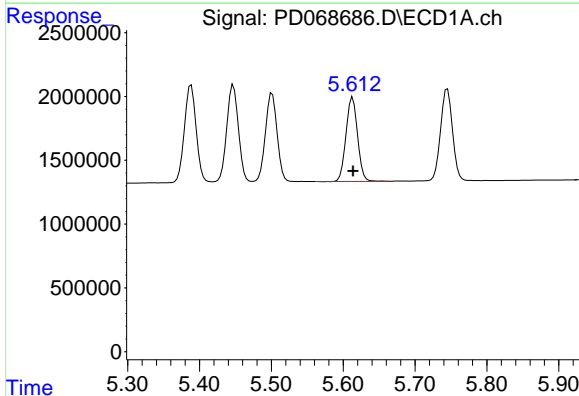
R.T.: 5.447 min  
 Delta R.T.: 0.000 min  
 Response: 8615982  
 Conc: 5.76 ng/ml

Instrument : ECD\_D  
 ClientSampleId : LOQ-SOIL-02-QT1-2022



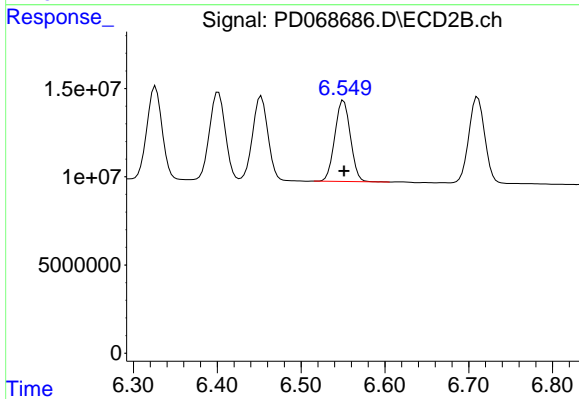
#11 alpha-Chlordane

R.T.: 6.402 min  
 Delta R.T.: 0.000 min  
 Response: 65536814  
 Conc: 6.58 ng/ml



#12 4,4'-DDE

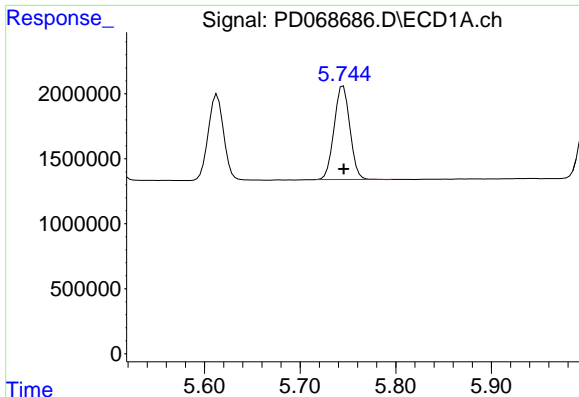
R.T.: 5.613 min  
 Delta R.T.: 0.000 min  
 Response: 7356697  
 Conc: 5.38 ng/ml



#12 4,4'-DDE

R.T.: 6.551 min  
 Delta R.T.: 0.000 min  
 Response: 59181543  
 Conc: 6.39 ng/ml

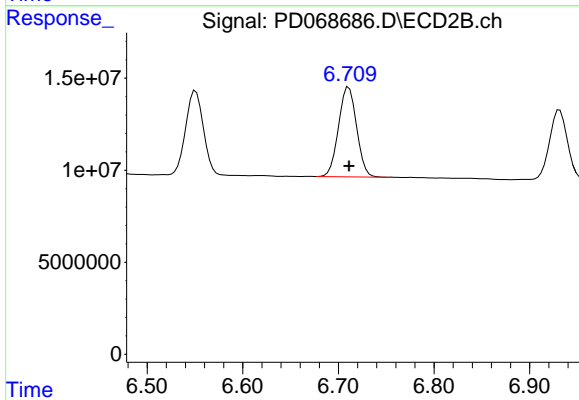




#13 Dieldrin

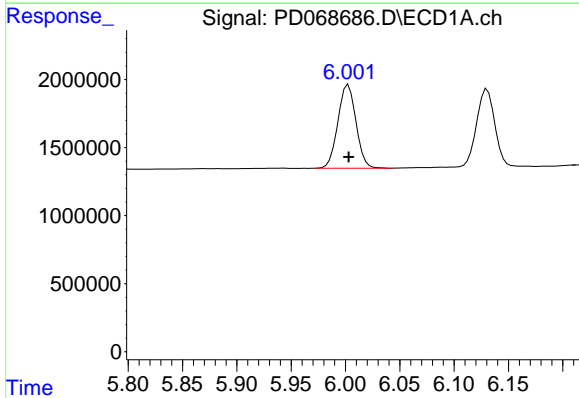
R.T.: 5.745 min  
 Delta R.T.: 0.000 min  
 Response: 8259834  
 Conc: 5.66 ng/ml

Instrument : ECD\_D  
 ClientSampleId : LOQ-SOIL-02-QT1-2022



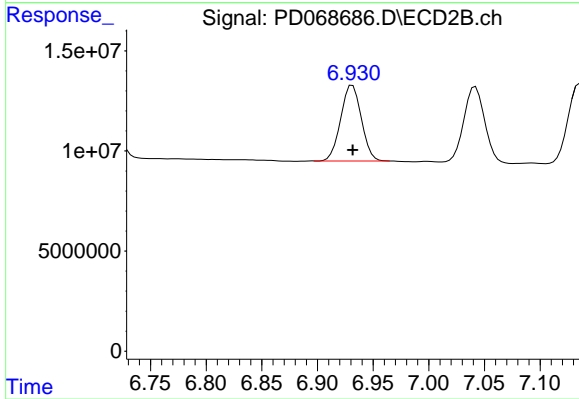
#13 Dieldrin

R.T.: 6.711 min  
 Delta R.T.: 0.000 min  
 Response: 64256310  
 Conc: 6.62 ng/ml



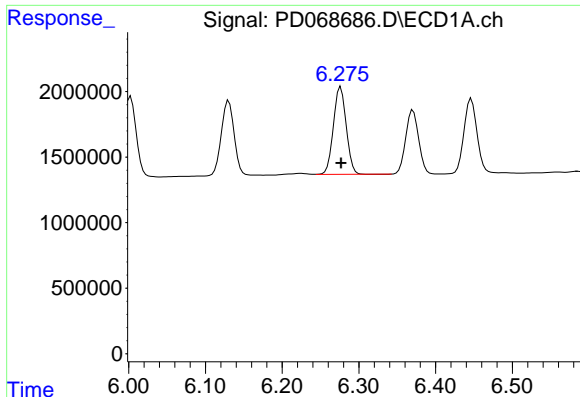
#14 Endrin

R.T.: 6.003 min  
 Delta R.T.: 0.000 min  
 Response: 7127385  
 Conc: 5.41 ng/ml



#14 Endrin

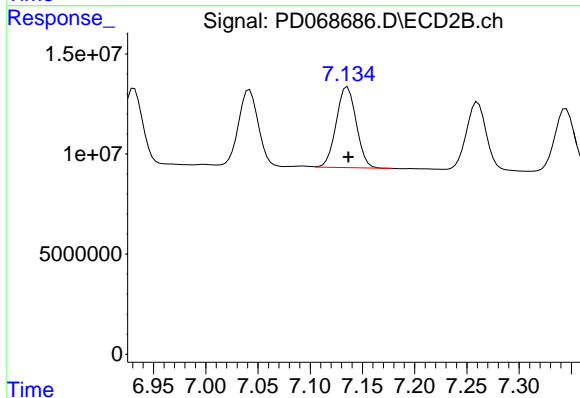
R.T.: 6.931 min  
 Delta R.T.: 0.000 min  
 Response: 48829461  
 Conc: 6.31 ng/ml



#15 Endosulfan II

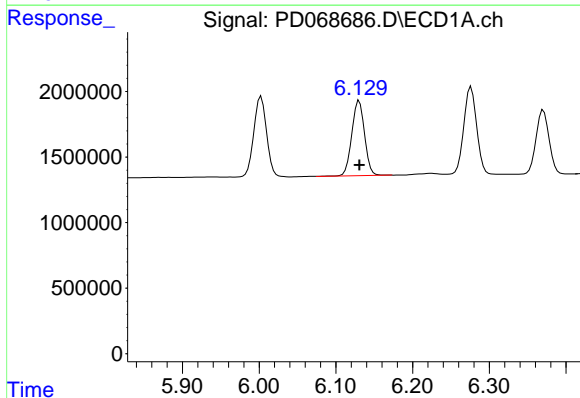
R.T.: 6.276 min  
 Delta R.T.: 0.000 min  
 Response: 7737632  
 Conc: 6.21 ng/ml

Instrument :  
 ECD\_D  
 ClientSampleId :  
 LOQ-SOIL-02-QT1-2022



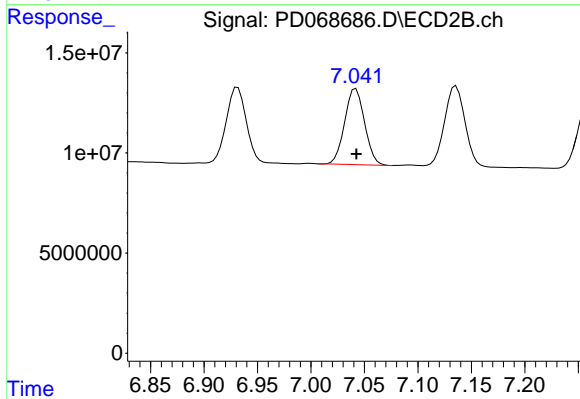
#15 Endosulfan II

R.T.: 7.136 min  
 Delta R.T.: 0.000 min  
 Response: 53704078  
 Conc: 7.11 ng/ml



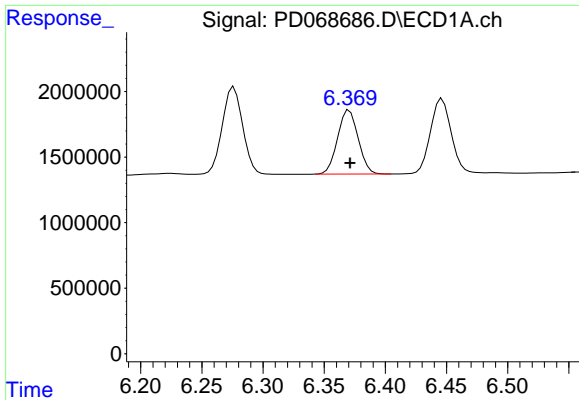
#16 4,4'-DDD

R.T.: 6.130 min  
 Delta R.T.: 0.000 min  
 Response: 6694967  
 Conc: 5.68 ng/ml



#16 4,4'-DDD

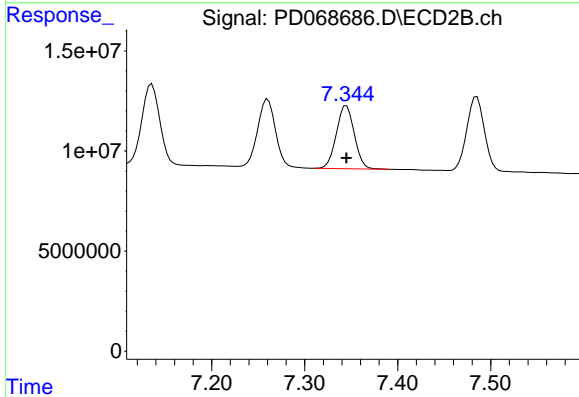
R.T.: 7.042 min  
 Delta R.T.: 0.000 min  
 Response: 49190926  
 Conc: 6.66 ng/ml



#17 4,4'-DDT

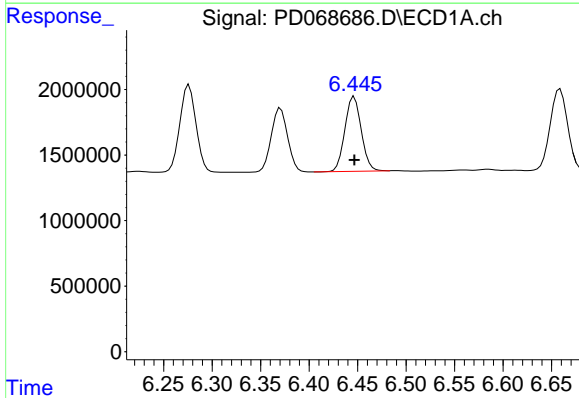
R.T.: 6.371 min  
 Delta R.T.: 0.000 min  
 Response: 5726336  
 Conc: 4.76 ng/ml

Instrument :  
 ECD\_D  
 ClientSampleId :  
 LOQ-SOIL-02-QT1-2022



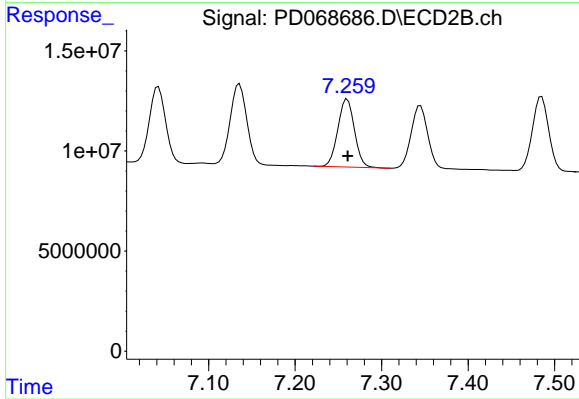
#17 4,4'-DDT

R.T.: 7.345 min  
 Delta R.T.: 0.000 min  
 Response: 42109060  
 Conc: 5.73 ng/ml



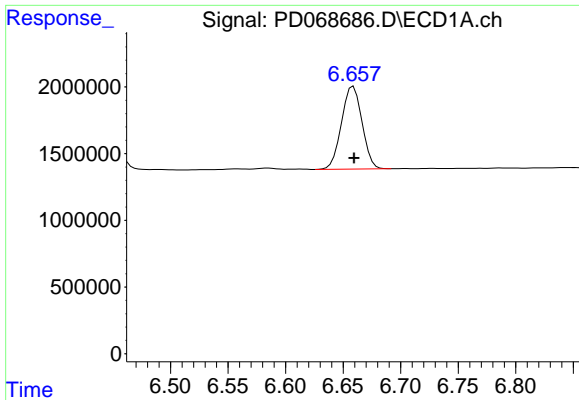
#18 Endrin aldehyde

R.T.: 6.446 min  
 Delta R.T.: 0.000 min  
 Response: 6698912  
 Conc: 6.75 ng/ml



#18 Endrin aldehyde

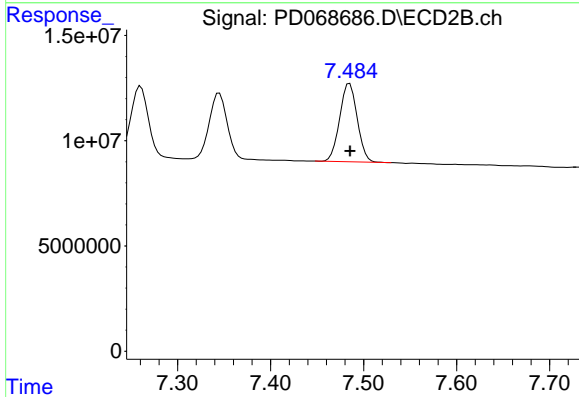
R.T.: 7.260 min  
 Delta R.T.: 0.000 min  
 Response: 45088265  
 Conc: 7.45 ng/ml



#19 Endosulfan Sulfate

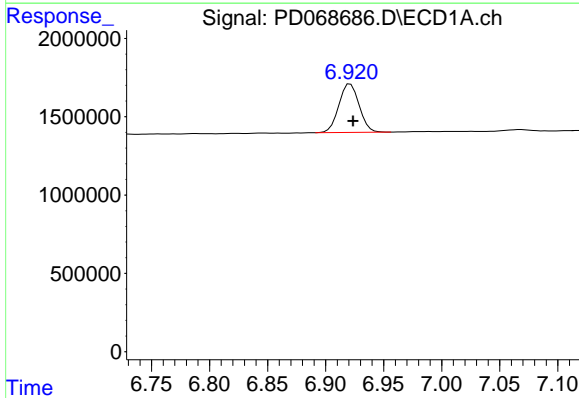
R.T.: 6.659 min  
 Delta R.T.: 0.000 min  
 Response: 7738938  
 Conc: 6.05 ng/ml

Instrument : ECD\_D  
 ClientSampleId : LOQ-SOIL-02-QT1-2022



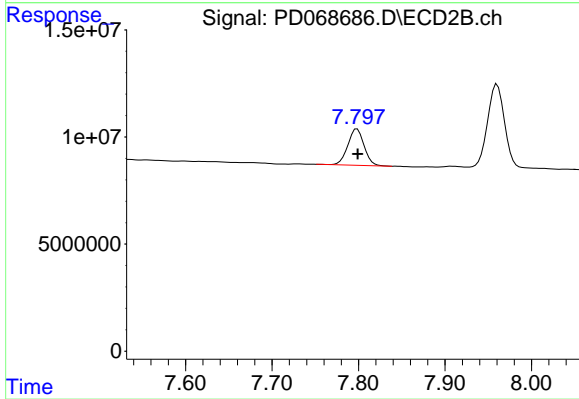
#19 Endosulfan Sulfate

R.T.: 7.485 min  
 Delta R.T.: 0.000 min  
 Response: 48706934  
 Conc: 6.62 ng/ml



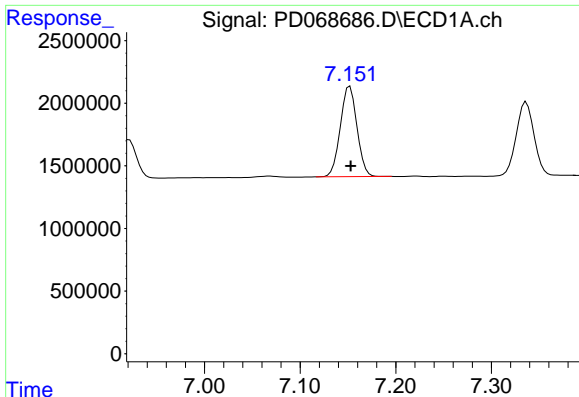
#20 Methoxychlor

R.T.: 6.921 min  
 Delta R.T.: -0.002 min  
 Response: 3760980  
 Conc: 5.43 ng/ml



#20 Methoxychlor

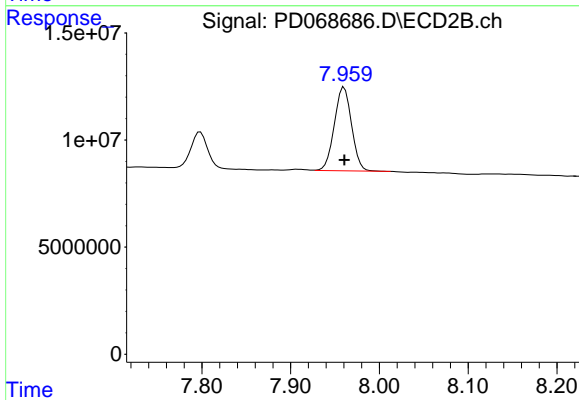
R.T.: 7.798 min  
 Delta R.T.: 0.000 min  
 Response: 22118851  
 Conc: 6.07 ng/ml



#21 Endrin ketone

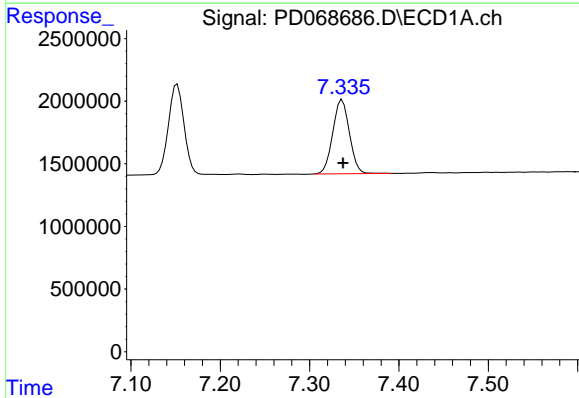
R.T.: 7.152 min  
 Delta R.T.: -0.001 min  
 Response: 8761349  
 Conc: 5.95 ng/ml

Instrument :  
 ECD\_D  
 ClientSampleId :  
 LOQ-SOIL-02-QT1-2022



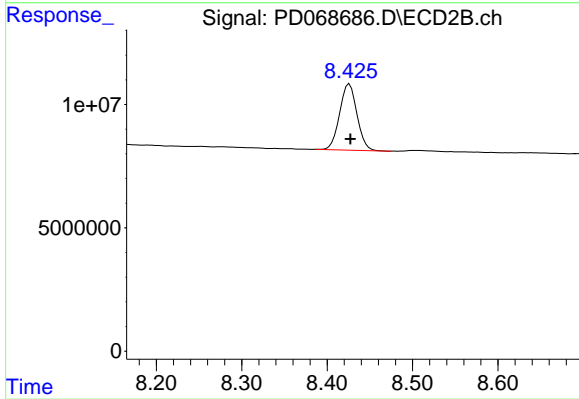
#21 Endrin ketone

R.T.: 7.960 min  
 Delta R.T.: 0.000 min  
 Response: 52623099  
 Conc: 6.79 ng/ml



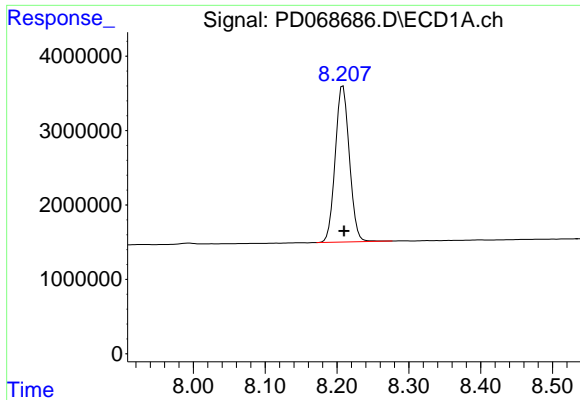
#22 Mirex

R.T.: 7.337 min  
 Delta R.T.: 0.000 min  
 Response: 7659352  
 Conc: 6.46 ng/ml



#22 Mirex

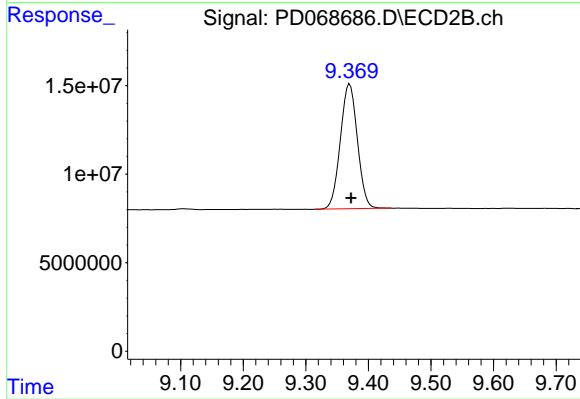
R.T.: 8.426 min  
 Delta R.T.: -0.001 min  
 Response: 37864512  
 Conc: 6.91 ng/ml



#28 Decachlorobiphenyl

R.T.: 8.208 min  
Delta R.T.: -0.001 min  
Response: 28677750  
Conc: 22.70 ng/ml

Instrument :  
ECD\_D  
ClientSampleId :  
LOQ-SOIL-02-QT1-2022



#28 Decachlorobiphenyl

R.T.: 9.370 min  
Delta R.T.: -0.002 min  
Response: 133756558  
Conc: 23.60 ng/ml