

Data Path : Z:\pestpcbsrv\HPCHEM1\ECD\_D\Data\PD031922\  
 Data File : PD068687.D  
 Signal(s) : Signal #1: ECD1A.ch Signal #2: ECD2B.ch  
 Acq On : 18 Mar 2022 12:18  
 Operator : AR\AJ  
 Sample : N1645-08  
 Misc : PEST LOQ .5PPB  
 ALS Vial : 11 Sample Multiplier: 1

Instrument :  
 ECD\_D  
 ClientSampleId :  
 LOQ-WATER-02-QT1-2022

Integration File signal 1: autoint1.e  
 Integration File signal 2: autoint2.e  
 Quant Time: Mar 19 00:44:31 2022  
 Quant Method : Z:\pestpcbsrv\HPCHEM1\ECD\_D\Method\PD031222.M  
 Quant Title : GC Extractables  
 QLast Update : Mon Mar 14 03:30:32 2022  
 Response via : Initial Calibration  
 Integrator: ChemStation

Volume Inj. : 2 µl  
 Signal #1 Phase : ZB-MR2 Signal #2 Phase: ZB-MR1  
 Signal #1 Info : 30M x 0.32mm x0.2 Signal #2 Info : 30M x 0.32mm x 0.50µm

Compound	RT#1	RT#2	Resp#1	Resp#2	ng/ml	ng/ml
System Monitoring Compounds						
1) SA Tetrachlo...	3.452	4.175	26058249	214.7E6	21.462	22.461
28) SA Decachlor...	8.211	9.372	28456790	132.7E6	22.524	23.422
Target Compounds						
2) A alpha-BHC	3.891	4.571	9017455	82003312	4.980	5.958
3) MA gamma-BHC...	4.175	4.862	8518565	75849177	5.102	6.066
4) MA Heptachlor	4.473	5.389	8904917	75295020	5.405	6.336
5) MB Aldrin	4.721	5.702	8861816	76275313	5.545	6.645
6) B beta-BHC	4.426	5.025	4289628	32746503	5.761	5.965
7) B delta-BHC	4.630	5.251	8490249	75361951	5.195	6.267
8) B Heptachlo...	5.166	6.090	8547653	70291904	5.716	6.731
9) A Endosulfan I	5.504	6.454	7871849	60691063	5.626	6.472
10) B gamma-Chl...	5.391	6.327	8706070	66861566	5.739	6.487
11) B alpha-Chl...	5.450	6.402	8642359	65488502	5.782	6.578
12) B 4,4'-DDE	5.616	6.552	7412776	58967684	5.418	6.363
13) MA Dieldrin	5.748	6.712	8301685	64068830	5.686	6.596
14) MA Endrin	6.006	6.932	7237020	48000011	5.494	6.204
15) B Endosulfa...	6.279	7.137	7742984	53209579	6.212	7.040
16) A 4,4'-DDD	6.133	7.043	6601139	48212981	5.598	6.528
17) MA 4,4'-DDT	6.374	7.346	5857402	42497779	4.873	5.785
18) B Endrin al...	6.449	7.262	6751636	44708474	6.801	7.388
19) B Endosulfa...	6.662	7.486	7757524	49139070	6.066	6.681
20) A Methoxychlor	6.925	7.799	3832610	22054710	5.530	6.050
21) B Endrin ke...	7.155	7.962	8783850	53086948	5.967	6.851
22) Mirex	7.339	8.428	7696051	37738518	6.494	6.885

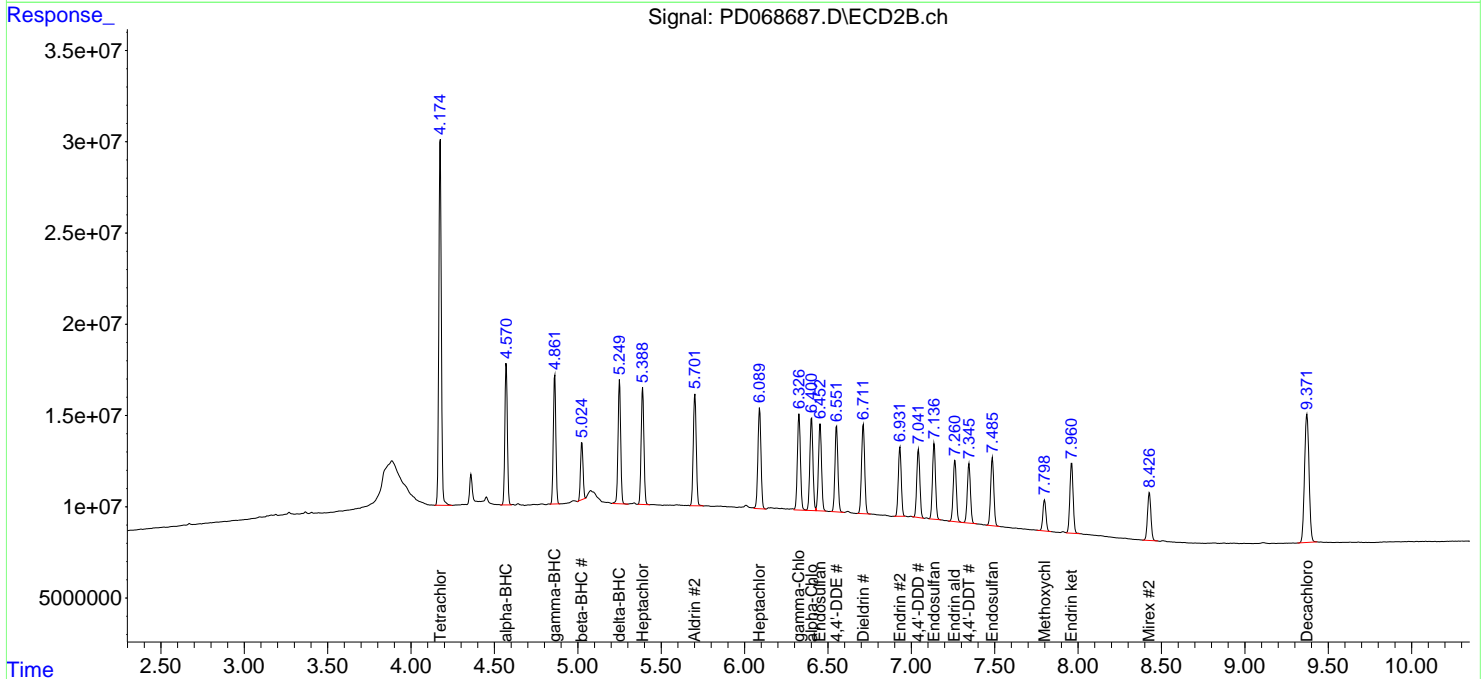
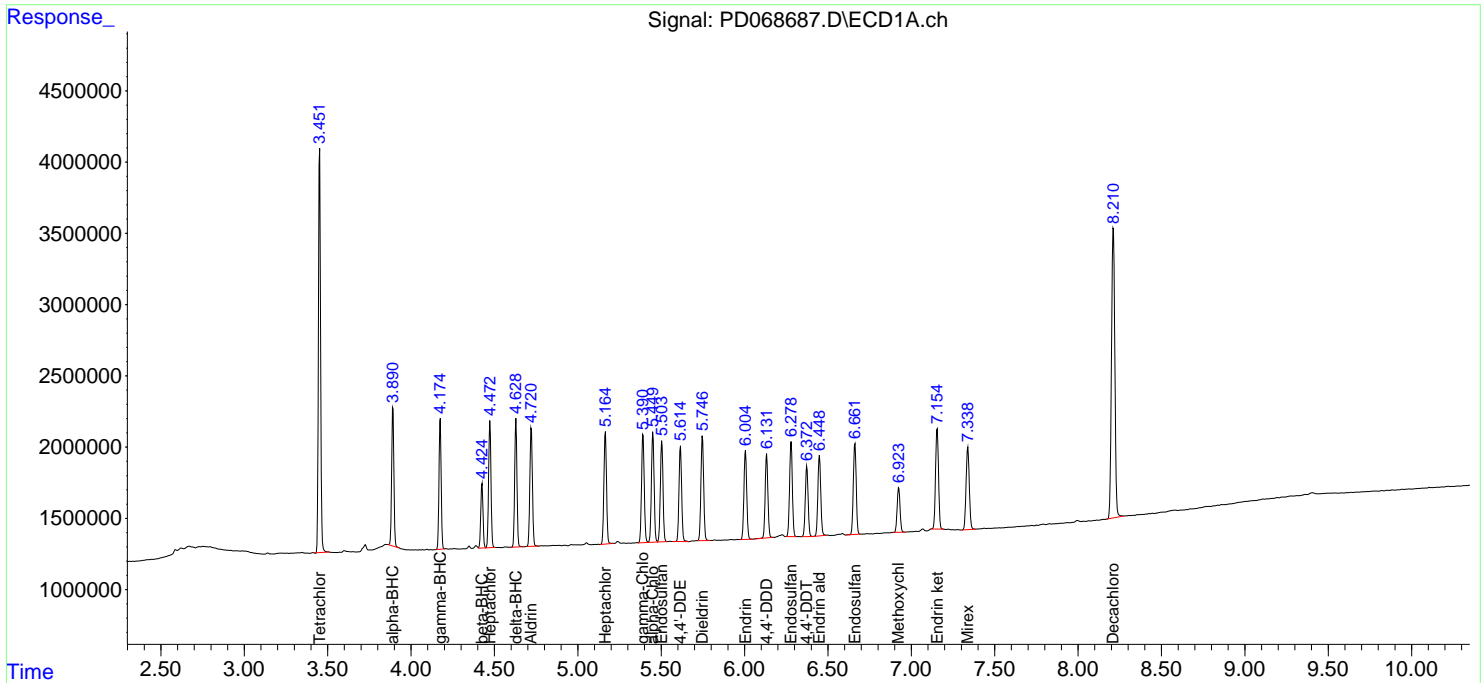
(f)=RT Delta > 1/2 Window (#)=Amounts differ by > 25% (m)=manual int.

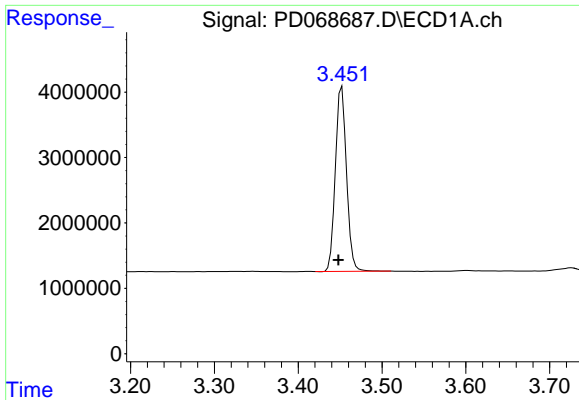
Data Path : Z:\pestpcbsrv\HPCHEM1\ECD\_D\Data\PD031922\  
 Data File : PD068687.D  
 Signal(s) : Signal #1: ECD1A.ch Signal #2: ECD2B.ch  
 Acq On : 18 Mar 2022 12:18  
 Operator : AR\AJ  
 Sample : N1645-08  
 Misc : PEST LOQ .5PPB  
 ALS Vial : 11 Sample Multiplier: 1

Instrument :  
 ECD\_D  
 ClientSampleId :  
 LOQ-WATER-02-QT1-2022

Integration File signal 1: autoint1.e  
 Integration File signal 2: autoint2.e  
 Quant Time: Mar 19 00:44:31 2022  
 Quant Method : Z:\pestpcbsrv\HPCHEM1\ECD\_D\Method\PD031222.M  
 Quant Title : GC Extractables  
 QLast Update : Mon Mar 14 03:30:32 2022  
 Response via : Initial Calibration  
 Integrator: ChemStation

Volume Inj. : 2 µl  
 Signal #1 Phase : ZB-MR2 Signal #2 Phase: ZB-MR1  
 Signal #1 Info : 30M x 0.32mm x0.2 Signal #2 Info : 30M x 0.32mm x 0.50µm

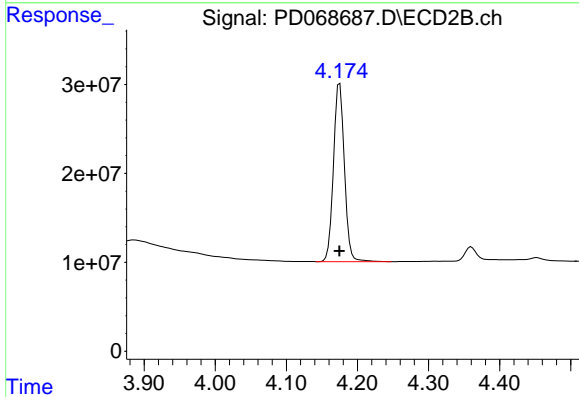




#1 Tetrachloro-m-xylene

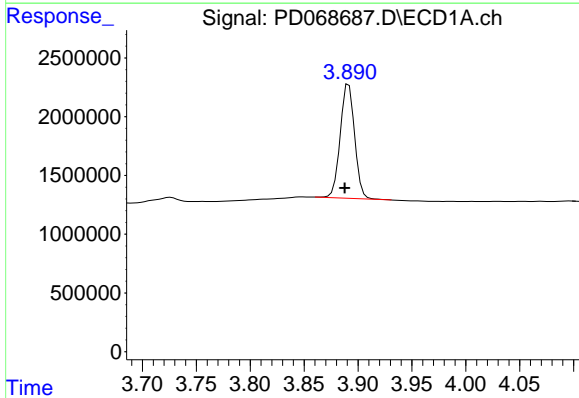
R.T.: 3.452 min  
 Delta R.T.: 0.004 min  
 Response: 26058249  
 Conc: 21.46 ng/ml

Instrument :  
 ECD\_D  
 ClientSampleId :  
 LOQ-WATER-02-QT1-2022



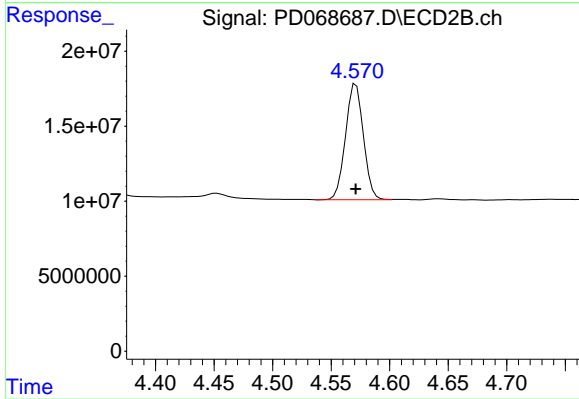
#1 Tetrachloro-m-xylene

R.T.: 4.175 min  
 Delta R.T.: 0.000 min  
 Response: 214742484  
 Conc: 22.46 ng/ml



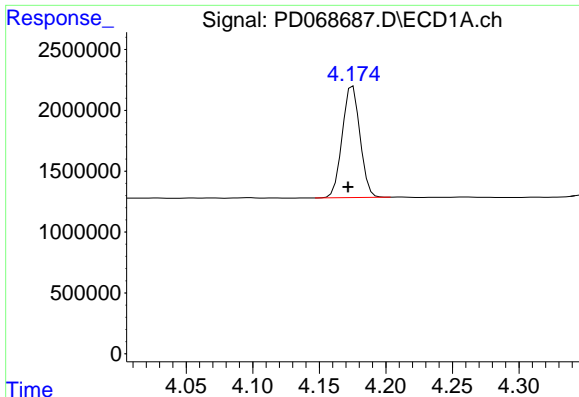
#2 alpha-BHC

R.T.: 3.891 min  
 Delta R.T.: 0.004 min  
 Response: 9017455  
 Conc: 4.98 ng/ml



#2 alpha-BHC

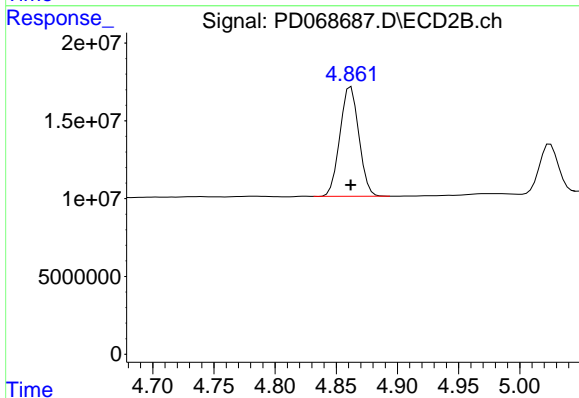
R.T.: 4.571 min  
 Delta R.T.: 0.000 min  
 Response: 82003312  
 Conc: 5.96 ng/ml



#3 gamma-BHC (Lindane)

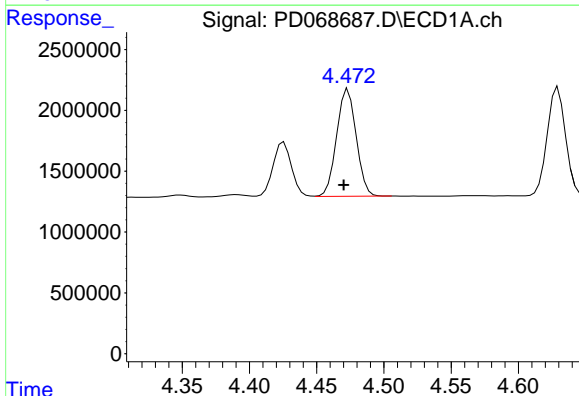
R.T.: 4.175 min  
 Delta R.T.: 0.004 min  
 Response: 8518565  
 Conc: 5.10 ng/ml

Instrument : ECD\_D  
 ClientSampleId : LOQ-WATER-02-QT1-2022



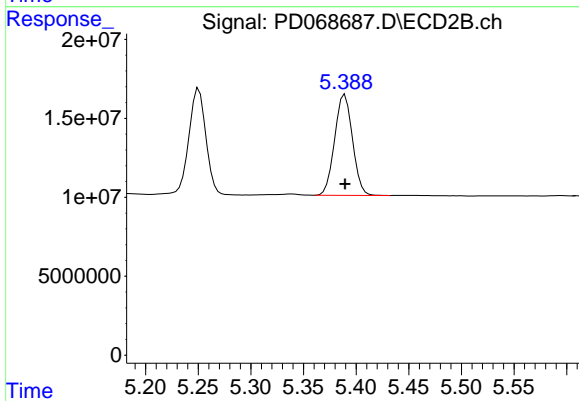
#3 gamma-BHC (Lindane)

R.T.: 4.862 min  
 Delta R.T.: 0.000 min  
 Response: 75849177  
 Conc: 6.07 ng/ml



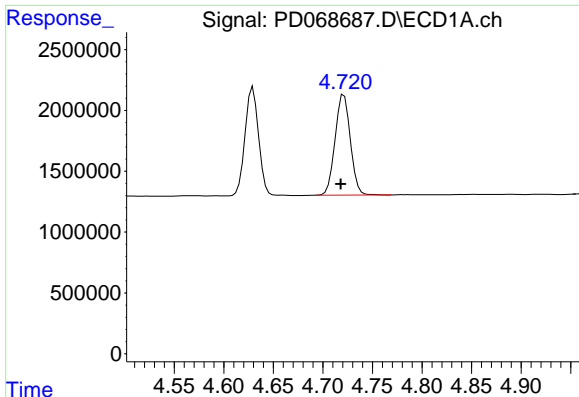
#4 Heptachlor

R.T.: 4.473 min  
 Delta R.T.: 0.003 min  
 Response: 8904917  
 Conc: 5.41 ng/ml



#4 Heptachlor

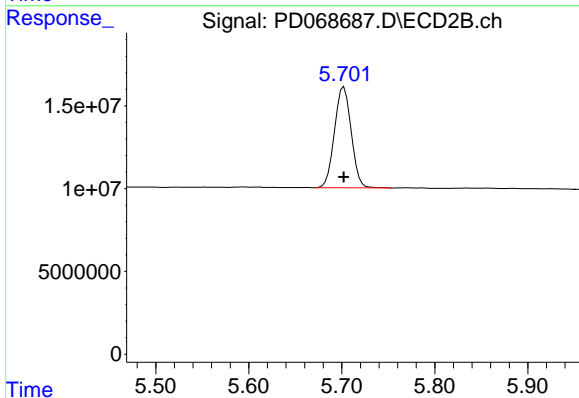
R.T.: 5.389 min  
 Delta R.T.: 0.000 min  
 Response: 75295020  
 Conc: 6.34 ng/ml



#5 Aldrin

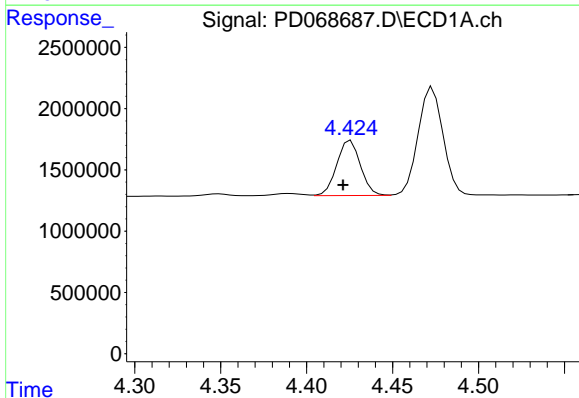
R.T.: 4.721 min  
 Delta R.T.: 0.003 min  
 Response: 8861816  
 Conc: 5.55 ng/ml

Instrument :  
 ECD\_D  
 ClientSampleId :  
 LOQ-WATER-02-QT1-2022



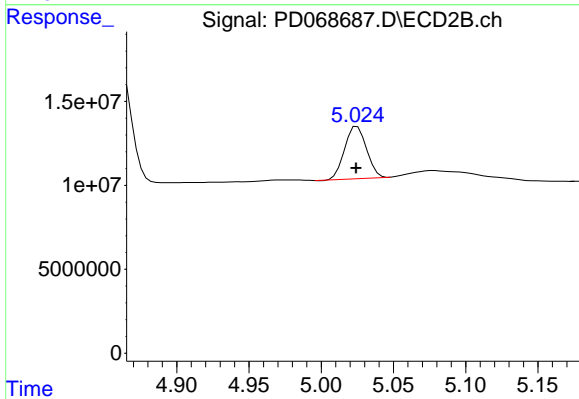
#5 Aldrin

R.T.: 5.702 min  
 Delta R.T.: 0.000 min  
 Response: 76275313  
 Conc: 6.64 ng/ml



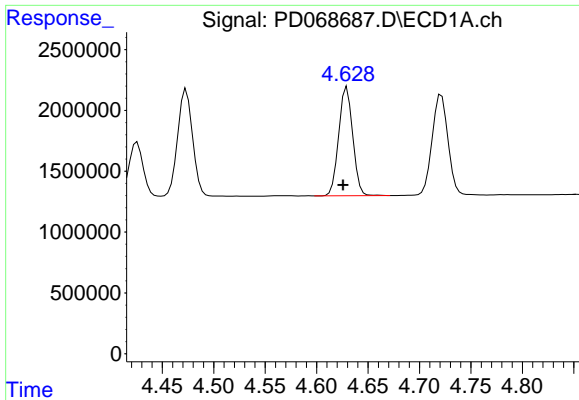
#6 beta-BHC

R.T.: 4.426 min  
 Delta R.T.: 0.005 min  
 Response: 4289628  
 Conc: 5.76 ng/ml



#6 beta-BHC

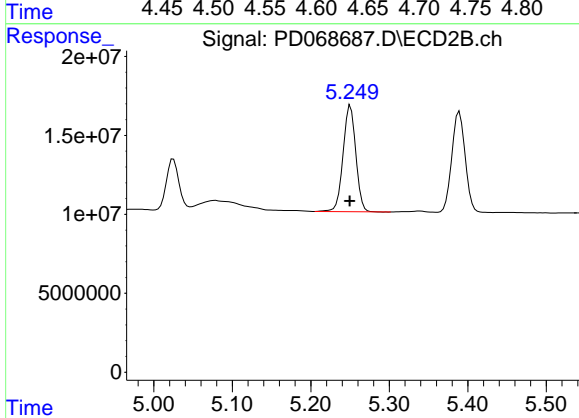
R.T.: 5.025 min  
 Delta R.T.: 0.000 min  
 Response: 32746503  
 Conc: 5.96 ng/ml



#7 delta-BHC

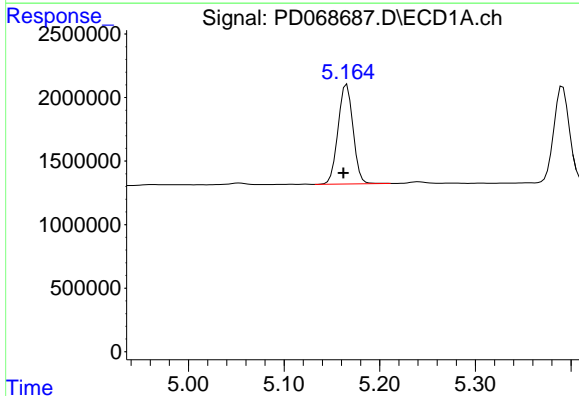
R.T.: 4.630 min  
 Delta R.T.: 0.004 min  
 Response: 8490249  
 Conc: 5.20 ng/ml

Instrument :  
 ECD\_D  
 ClientSampleId :  
 LOQ-WATER-02-QT1-2022



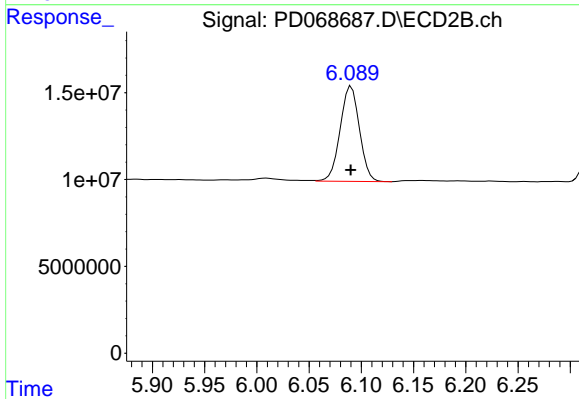
#7 delta-BHC

R.T.: 5.251 min  
 Delta R.T.: 0.000 min  
 Response: 75361951  
 Conc: 6.27 ng/ml



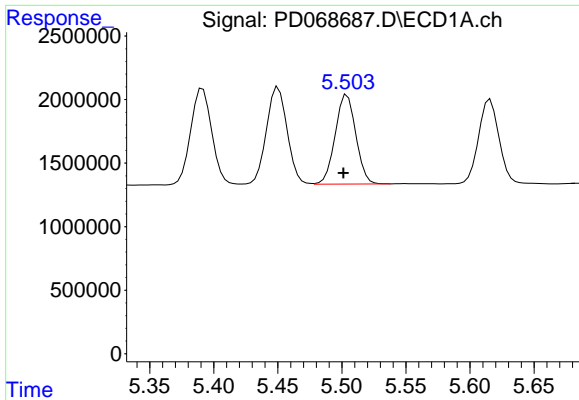
#8 Heptachlor epoxide

R.T.: 5.166 min  
 Delta R.T.: 0.004 min  
 Response: 8547653  
 Conc: 5.72 ng/ml



#8 Heptachlor epoxide

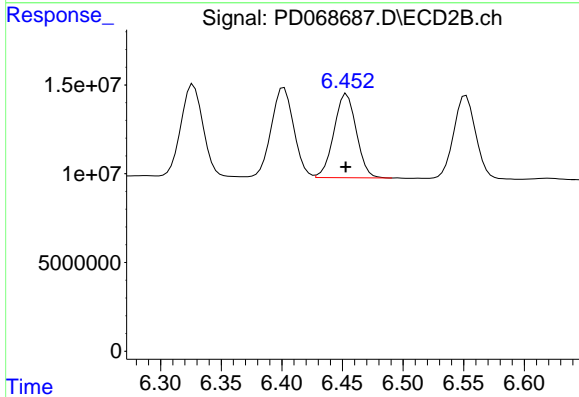
R.T.: 6.090 min  
 Delta R.T.: 0.000 min  
 Response: 70291904  
 Conc: 6.73 ng/ml



#9 Endosulfan I

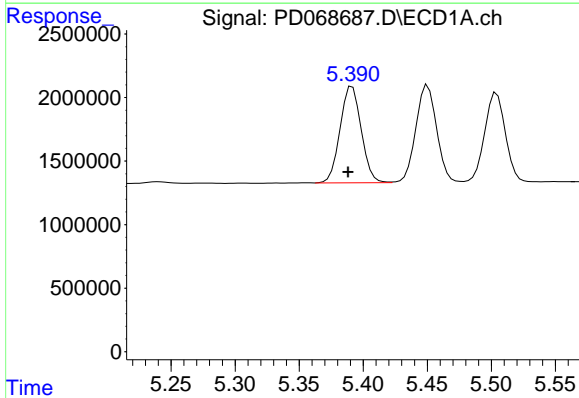
R.T.: 5.504 min  
 Delta R.T.: 0.003 min  
 Response: 7871849  
 Conc: 5.63 ng/ml

Instrument :  
 ECD\_D  
 ClientSampleId :  
 LOQ-WATER-02-QT1-2022



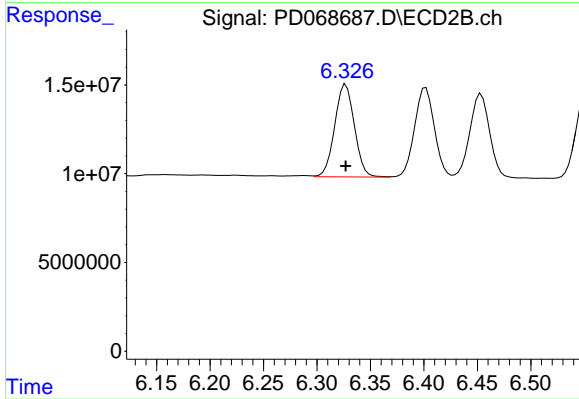
#9 Endosulfan I

R.T.: 6.454 min  
 Delta R.T.: 0.000 min  
 Response: 60691063  
 Conc: 6.47 ng/ml



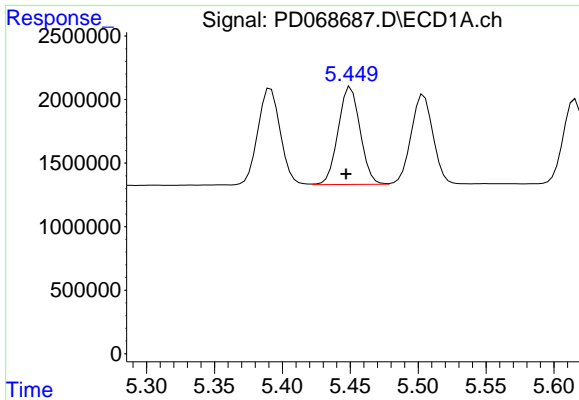
#10 gamma-Chlordane

R.T.: 5.391 min  
 Delta R.T.: 0.003 min  
 Response: 8706070  
 Conc: 5.74 ng/ml



#10 gamma-Chlordane

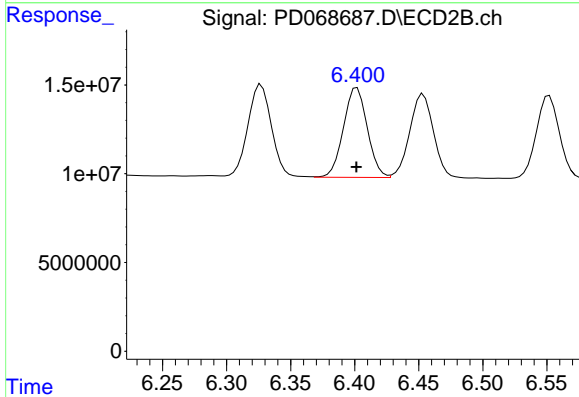
R.T.: 6.327 min  
 Delta R.T.: 0.000 min  
 Response: 66861566  
 Conc: 6.49 ng/ml



#11 alpha-Chlordane

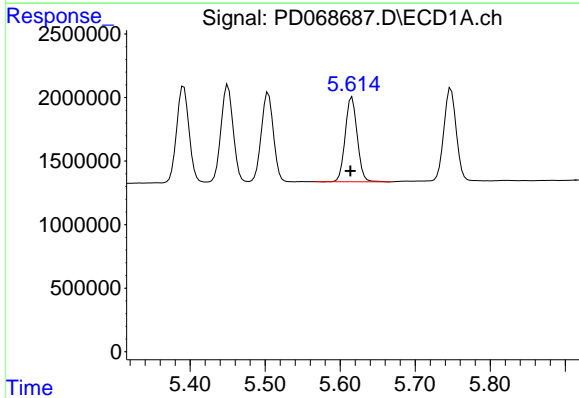
R.T.: 5.450 min  
 Delta R.T.: 0.003 min  
 Response: 8642359  
 Conc: 5.78 ng/ml

Instrument :  
 ECD\_D  
 ClientSampleId :  
 LOQ-WATER-02-QT1-2022



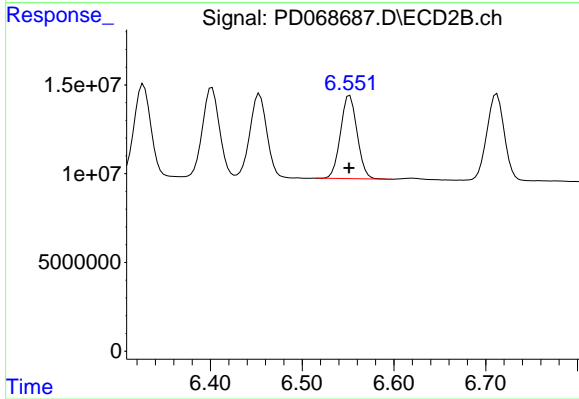
#11 alpha-Chlordane

R.T.: 6.402 min  
 Delta R.T.: 0.000 min  
 Response: 65488502  
 Conc: 6.58 ng/ml



#12 4,4'-DDE

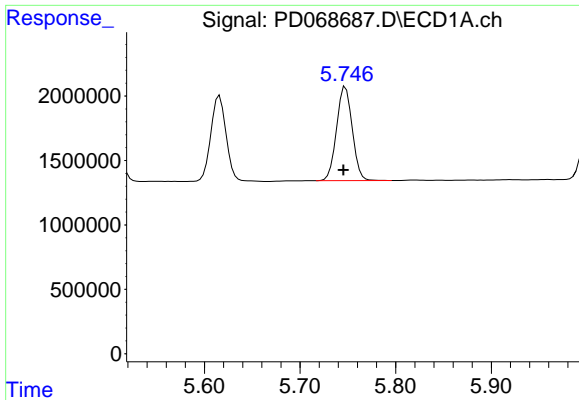
R.T.: 5.616 min  
 Delta R.T.: 0.002 min  
 Response: 7412776  
 Conc: 5.42 ng/ml



#12 4,4'-DDE

R.T.: 6.552 min  
 Delta R.T.: 0.000 min  
 Response: 58967684  
 Conc: 6.36 ng/ml

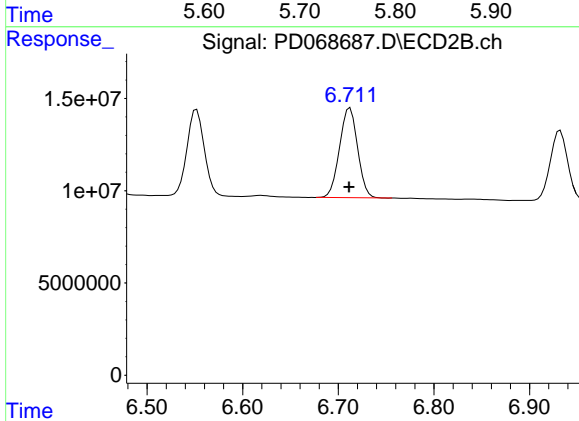




#13 Dieldrin

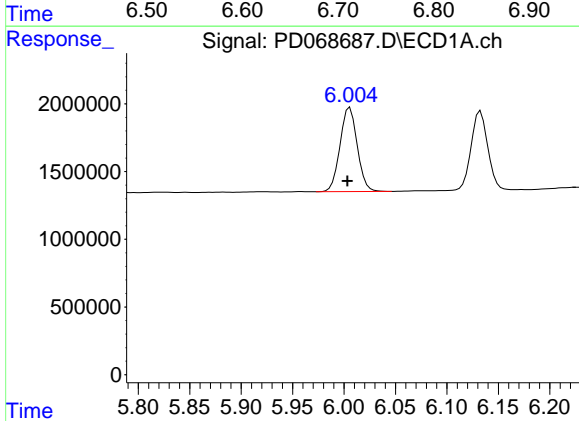
R.T.: 5.748 min  
 Delta R.T.: 0.002 min  
 Response: 8301685  
 Conc: 5.69 ng/ml

Instrument : ECD\_D  
 ClientSampleId : LOQ-WATER-02-QT1-2022



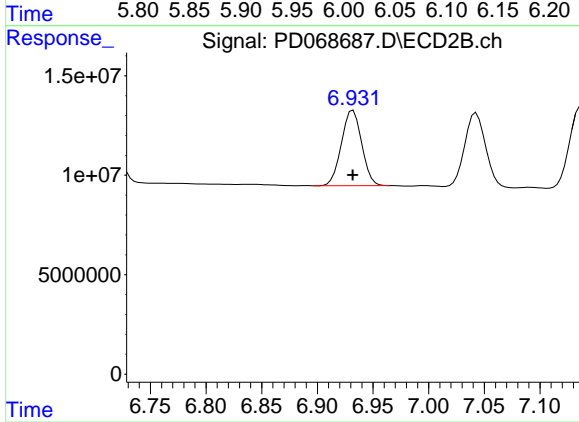
#13 Dieldrin

R.T.: 6.712 min  
 Delta R.T.: 0.000 min  
 Response: 64068830  
 Conc: 6.60 ng/ml



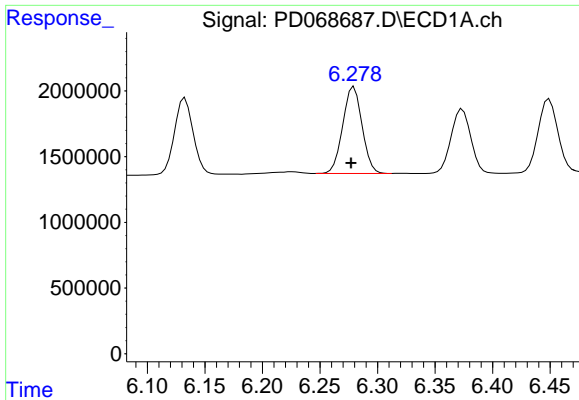
#14 Endrin

R.T.: 6.006 min  
 Delta R.T.: 0.003 min  
 Response: 7237020  
 Conc: 5.49 ng/ml



#14 Endrin

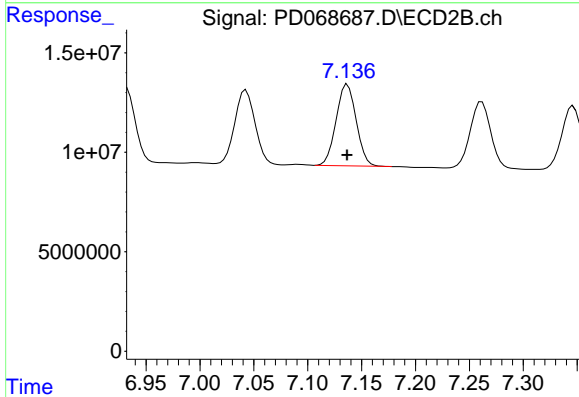
R.T.: 6.932 min  
 Delta R.T.: 0.000 min  
 Response: 48000011  
 Conc: 6.20 ng/ml



#15 Endosulfan II

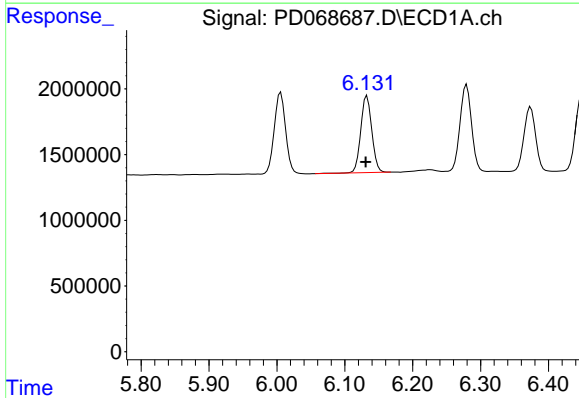
R.T.: 6.279 min  
 Delta R.T.: 0.002 min  
 Response: 7742984  
 Conc: 6.21 ng/ml

Instrument :  
 ECD\_D  
 ClientSampleId :  
 LOQ-WATER-02-QT1-2022



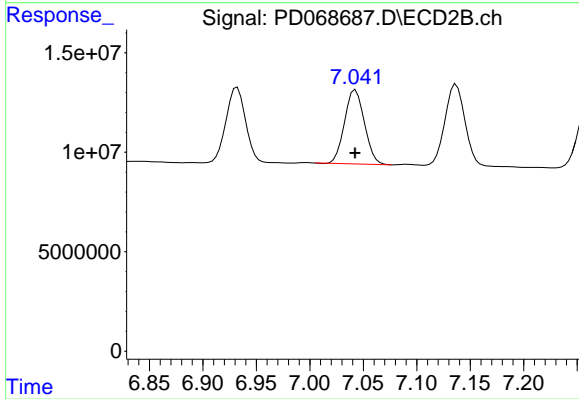
#15 Endosulfan II

R.T.: 7.137 min  
 Delta R.T.: 0.000 min  
 Response: 53209579  
 Conc: 7.04 ng/ml



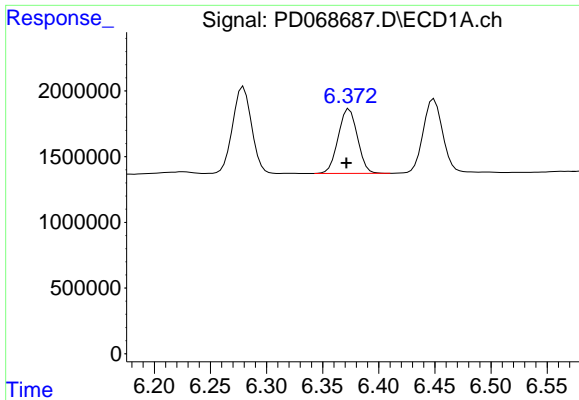
#16 4,4'-DDD

R.T.: 6.133 min  
 Delta R.T.: 0.002 min  
 Response: 6601139  
 Conc: 5.60 ng/ml



#16 4,4'-DDD

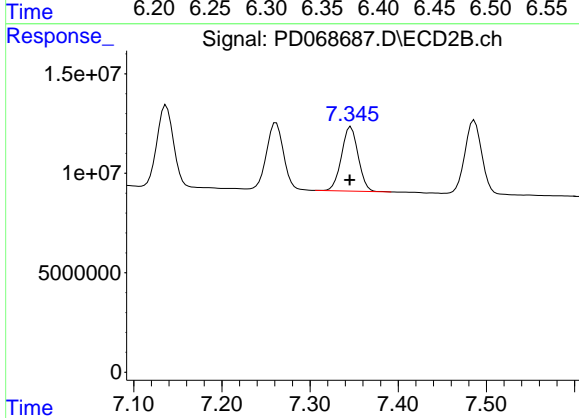
R.T.: 7.043 min  
 Delta R.T.: 0.000 min  
 Response: 48212981  
 Conc: 6.53 ng/ml



#17 4,4'-DDT

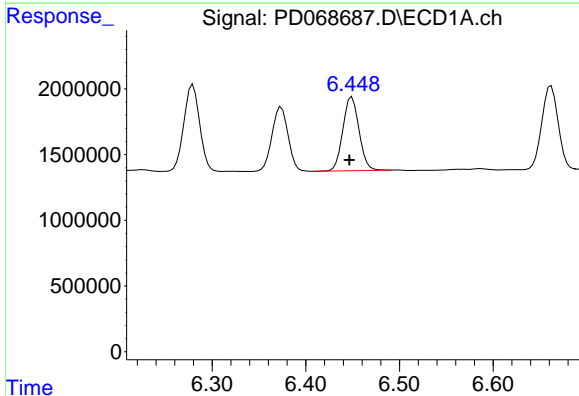
R.T.: 6.374 min  
 Delta R.T.: 0.003 min  
 Response: 5857402  
 Conc: 4.87 ng/ml

Instrument :  
 ECD\_D  
 ClientSampleId :  
 LOQ-WATER-02-QT1-2022



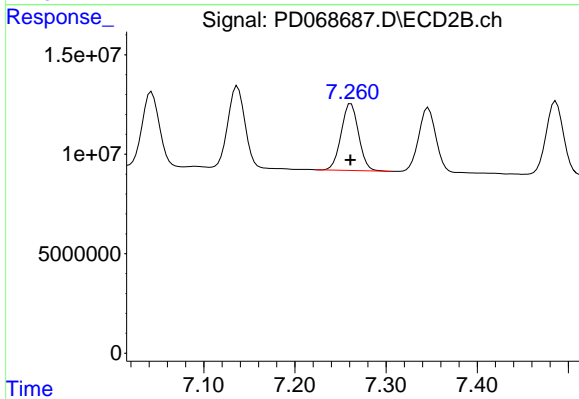
#17 4,4'-DDT

R.T.: 7.346 min  
 Delta R.T.: 0.002 min  
 Response: 42497779  
 Conc: 5.78 ng/ml



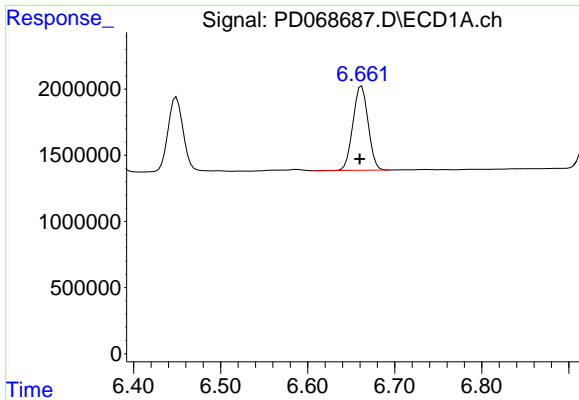
#18 Endrin aldehyde

R.T.: 6.449 min  
 Delta R.T.: 0.003 min  
 Response: 6751636  
 Conc: 6.80 ng/ml



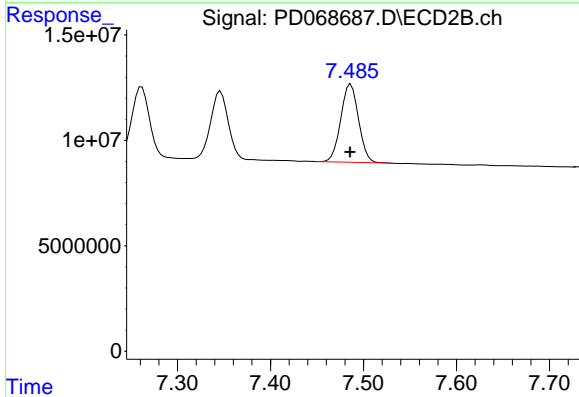
#18 Endrin aldehyde

R.T.: 7.262 min  
 Delta R.T.: 0.000 min  
 Response: 44708474  
 Conc: 7.39 ng/ml

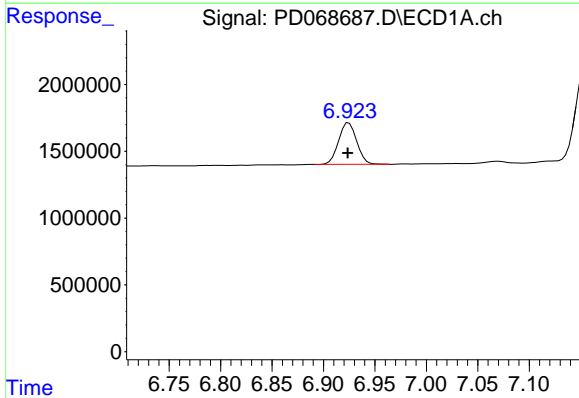


#19 Endosulfan Sulfate  
 R.T.: 6.662 min  
 Delta R.T.: 0.002 min  
 Response: 7757524  
 Conc: 6.07 ng/ml

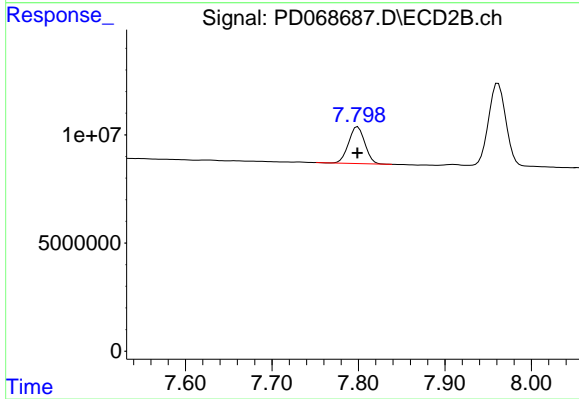
Instrument :  
 ECD\_D  
 ClientSampleId :  
 LOQ-WATER-02-QT1-2022



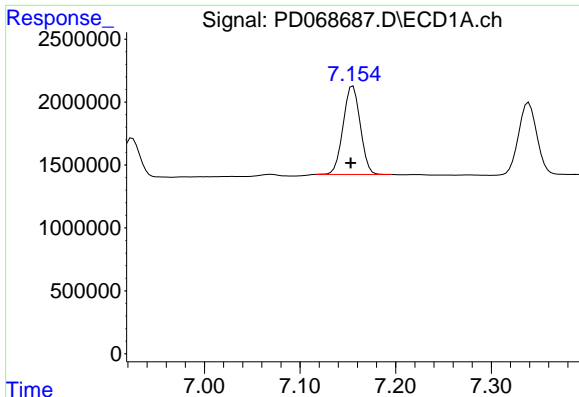
#19 Endosulfan Sulfate  
 R.T.: 7.486 min  
 Delta R.T.: 0.000 min  
 Response: 49139070  
 Conc: 6.68 ng/ml



#20 Methoxychlor  
 R.T.: 6.925 min  
 Delta R.T.: 0.001 min  
 Response: 3832610  
 Conc: 5.53 ng/ml



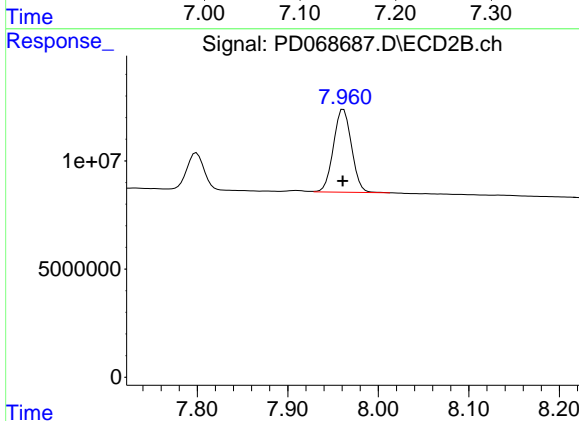
#20 Methoxychlor  
 R.T.: 7.799 min  
 Delta R.T.: 0.000 min  
 Response: 22054710  
 Conc: 6.05 ng/ml



#21 Endrin ketone

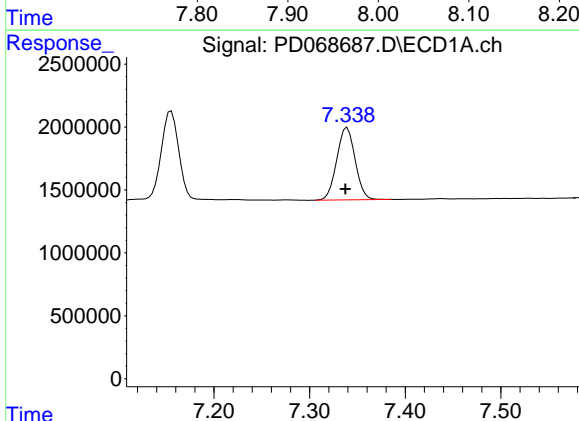
R.T.: 7.155 min  
 Delta R.T.: 0.002 min  
 Response: 8783850  
 Conc: 5.97 ng/ml

Instrument :  
 ECD\_D  
 ClientSampleId :  
 LOQ-WATER-02-QT1-2022



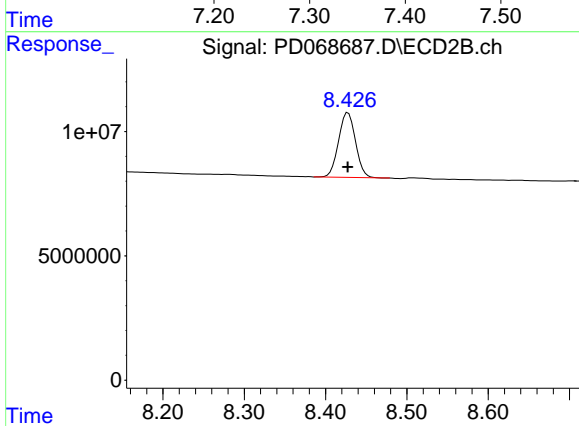
#21 Endrin ketone

R.T.: 7.962 min  
 Delta R.T.: 0.000 min  
 Response: 53086948  
 Conc: 6.85 ng/ml



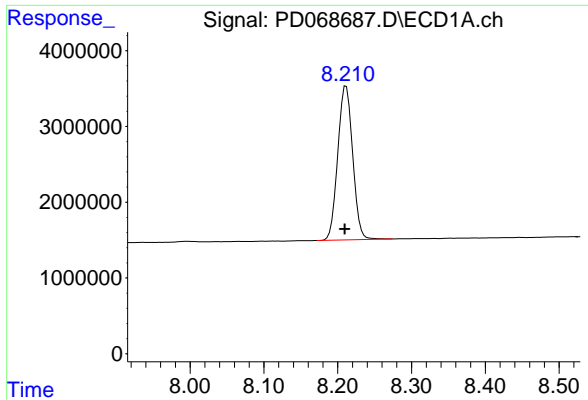
#22 Mirex

R.T.: 7.339 min  
 Delta R.T.: 0.002 min  
 Response: 7696051  
 Conc: 6.49 ng/ml



#22 Mirex

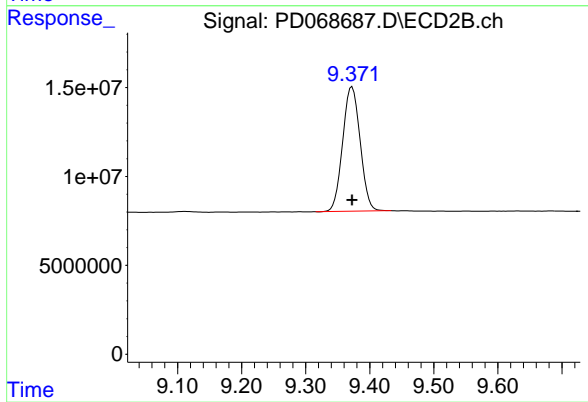
R.T.: 8.428 min  
 Delta R.T.: 0.000 min  
 Response: 37738518  
 Conc: 6.88 ng/ml



#28 Decachlorobiphenyl

R.T.: 8.211 min  
Delta R.T.: 0.002 min  
Response: 28456790  
Conc: 22.52 ng/ml

Instrument :  
ECD\_D  
ClientSampleId :  
LOQ-WATER-02-QT1-2022



#28 Decachlorobiphenyl

R.T.: 9.372 min  
Delta R.T.: 0.000 min  
Response: 132723567  
Conc: 23.42 ng/ml