

Data Path : Z:\pestpcbsrv\HPCHEM1\ECD\_D\Data\PD031922\  
 Data File : PD068689.D  
 Signal(s) : Signal #1: ECD1A.ch Signal #2: ECD2B.ch  
 Acq On : 18 Mar 2022 12:46  
 Operator : AR\AJ  
 Sample : PSTDCCC050  
 Misc :  
 ALS Vial : 4 Sample Multiplier: 1

Instrument :  
 ECD\_D  
 ClientSampleId :  
 PSTDCCC050

Integration File signal 1: autoint1.e  
 Integration File signal 2: autoint2.e  
 Quant Time: Mar 19 00:45:19 2022  
 Quant Method : Z:\pestpcbsrv\HPCHEM1\ECD\_D\Method\PD031222.M  
 Quant Title : GC Extractables  
 QLast Update : Mon Mar 14 03:30:32 2022  
 Response via : Initial Calibration  
 Integrator: ChemStation

Volume Inj. : 2 µl  
 Signal #1 Phase : ZB-MR2 Signal #2 Phase: ZB-MR1  
 Signal #1 Info : 30M x 0.32mm x0.2 Signal #2 Info : 30M x 0.32mm x 0.50µm

Compound	RT#1	RT#2	Resp#1	Resp#2	ng/ml	ng/ml
-----						
System Monitoring Compounds						
1) SA Tetrachlo...	3.448	4.175	61033363	476.0E6	50.267	49.784
28) SA Decachlor...	8.207	9.370	61317288	278.8E6	48.534	49.207
Target Compounds						
2) A alpha-BHC	3.888	4.571	94022691	702.6E6	51.930	51.053
3) MA gamma-BHC...	4.171	4.861	86582630	635.9E6	51.853	50.861
4) MA Heptachlor	4.469	5.389	84734524	611.0E6	51.433	51.411
5) MB Aldrin	4.717	5.702	83531263	590.9E6	52.268	51.482
6) B beta-BHC	4.421	5.024	37598453	277.1E6	50.498	50.482
7) B delta-BHC	4.625	5.250	85657168	619.1E6	52.415	51.485
8) B Heptachlo...	5.161	6.090	76905893	526.6E6	51.425	50.428
9) A Endosulfan I	5.500	6.453	72093133	477.3E6	51.523	50.894
10) B gamma-Chl...	5.387	6.327	78009395	522.2E6	51.425	50.662
11) B alpha-Chl...	5.446	6.401	76658678	505.2E6	51.289	50.743
12) B 4,4'-DDE	5.612	6.551	71504567	475.1E6	52.267	51.273
13) MA Dieldrin	5.744	6.711	75653188	490.7E6	51.812	50.515
14) MA Endrin	6.002	6.931	62117590	368.5E6	47.155	47.630
15) B Endosulfa...	6.276	7.136	63507976	381.0E6	50.955	50.412
16) A 4,4'-DDD	6.129	7.042	61493737	382.5E6	52.147	51.797
17) MA 4,4'-DDT	6.370	7.345	59700654	367.9E6	49.669	50.078
18) B Endrin al...	6.445	7.260	50631603	307.1E6	51.001	50.748
19) B Endosulfa...	6.658	7.485	64731393	369.5E6	50.618	50.237
20) A Methoxychlor	6.920	7.798	33119916	178.8E6	47.790	49.043
21) B Endrin ke...	7.151	7.960	76847109	394.8E6	52.200	50.944
22) Mirex	7.335	8.426	57202506	269.6E6	48.265	49.187
-----						

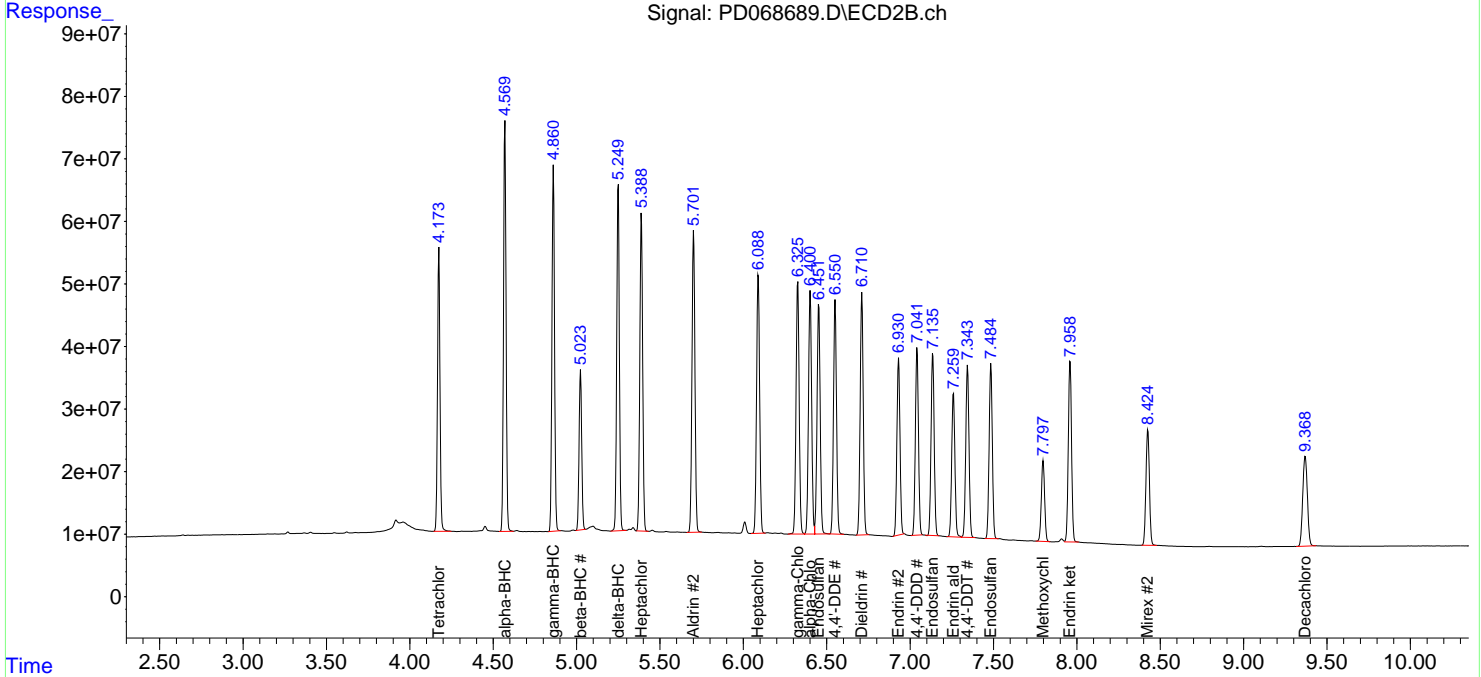
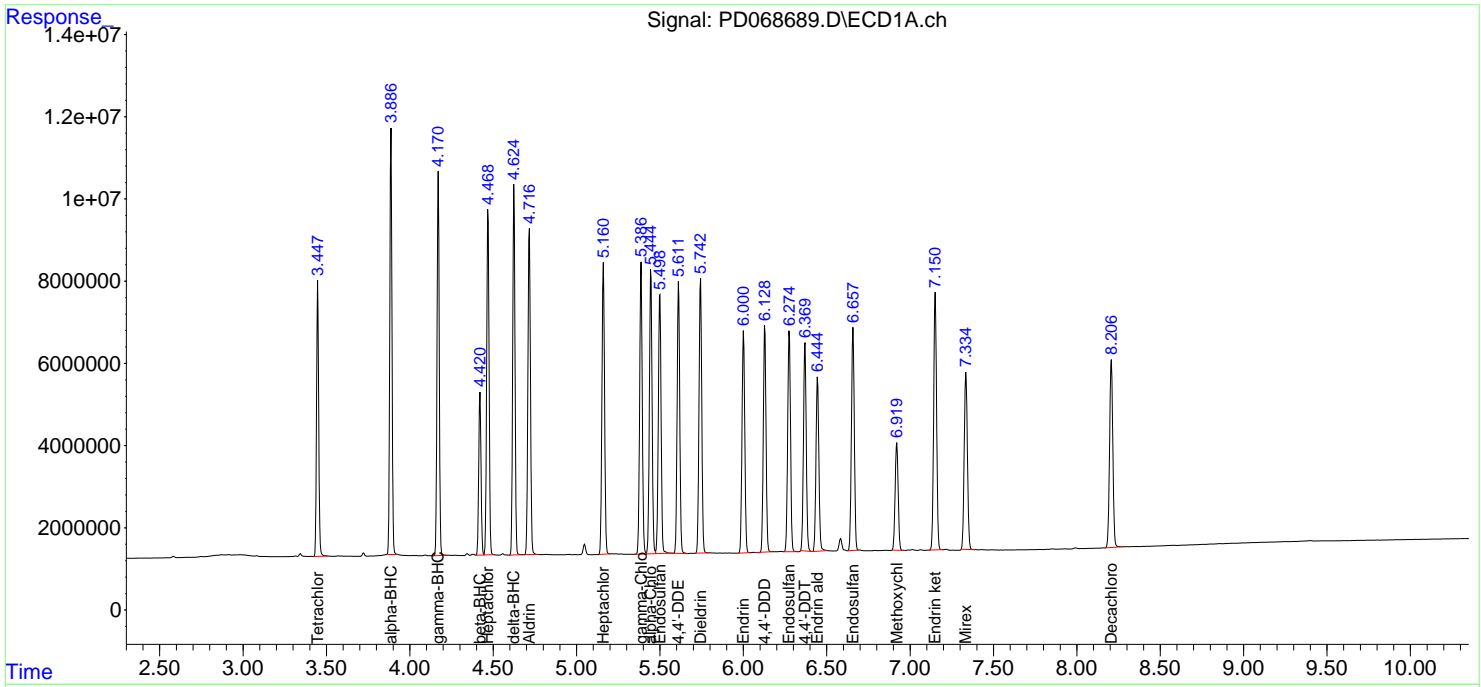
(f)=RT Delta > 1/2 Window (#)=Amounts differ by > 25% (m)=manual int.

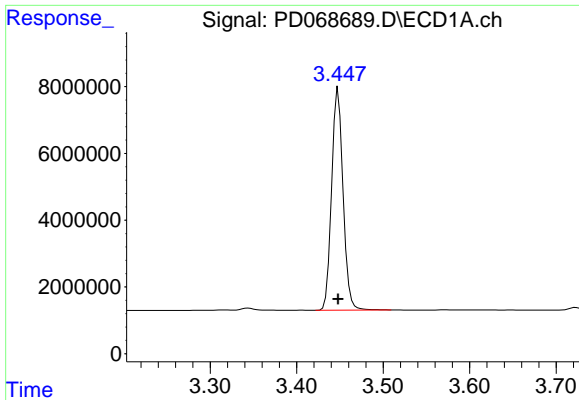
Data Path : Z:\pestpcbsrv\HPCHEM1\ECD\_D\Data\PD031922\  
 Data File : PD068689.D  
 Signal(s) : Signal #1: ECD1A.ch Signal #2: ECD2B.ch  
 Acq On : 18 Mar 2022 12:46  
 Operator : AR\AJ  
 Sample : PSTDCCC050  
 Misc :  
 ALS Vial : 4 Sample Multiplier: 1

**Instrument :**  
 ECD\_D  
**ClientSampleId :**  
 PSTDCCC050

Integration File signal 1: autoint1.e  
 Integration File signal 2: autoint2.e  
 Quant Time: Mar 19 00:45:19 2022  
 Quant Method : Z:\pestpcbsrv\HPCHEM1\ECD\_D\Method\PD031222.M  
 Quant Title : GC Extractables  
 QLast Update : Mon Mar 14 03:30:32 2022  
 Response via : Initial Calibration  
 Integrator: ChemStation

Volume Inj. : 2 µl  
 Signal #1 Phase : ZB-MR2 Signal #2 Phase: ZB-MR1  
 Signal #1 Info : 30M x 0.32mm x0.2 Signal #2 Info : 30M x 0.32mm x 0.50µm

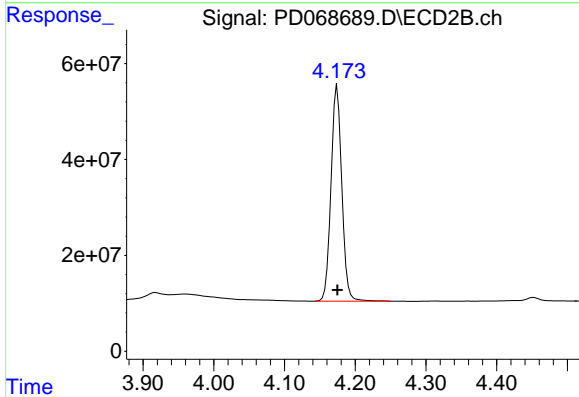




#1 Tetrachloro-m-xylene

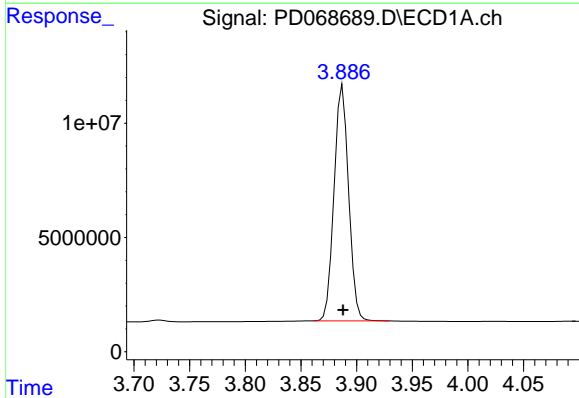
R.T.: 3.448 min  
 Delta R.T.: 0.000 min  
 Response: 61033363  
 Conc: 50.27 ng/ml

Instrument :  
 ECD\_D  
 ClientSampleId :  
 PSTDCCC050



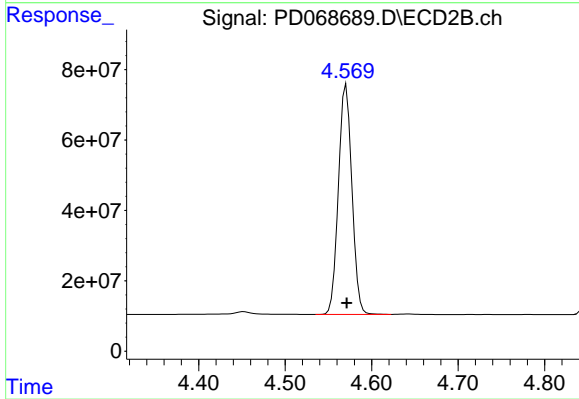
#1 Tetrachloro-m-xylene

R.T.: 4.175 min  
 Delta R.T.: 0.000 min  
 Response: 475972979  
 Conc: 49.78 ng/ml



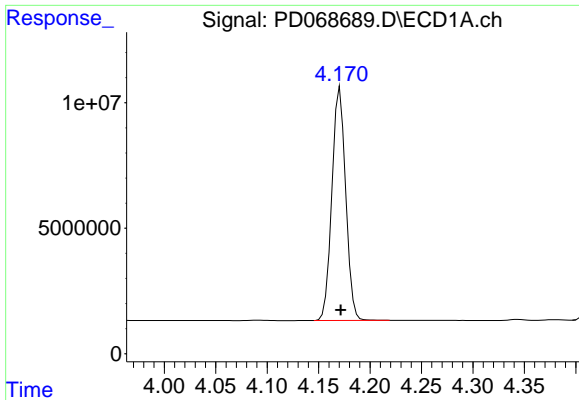
#2 alpha-BHC

R.T.: 3.888 min  
 Delta R.T.: 0.000 min  
 Response: 94022691  
 Conc: 51.93 ng/ml



#2 alpha-BHC

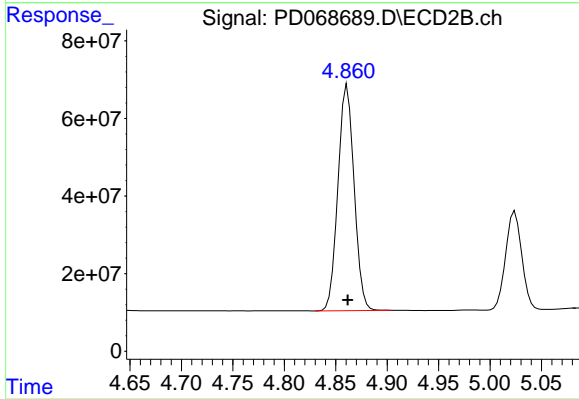
R.T.: 4.571 min  
 Delta R.T.: 0.000 min  
 Response: 702633709  
 Conc: 51.05 ng/ml



#3 gamma-BHC (Lindane)

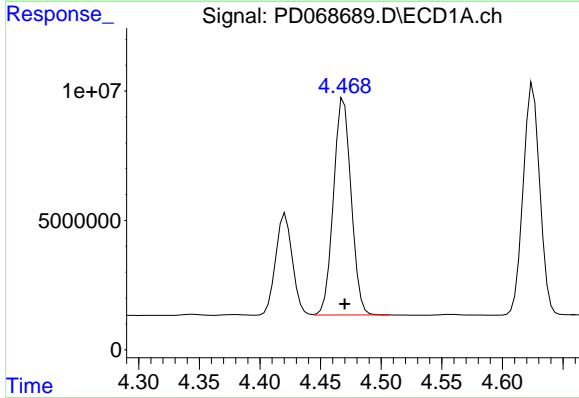
R.T.: 4.171 min  
 Delta R.T.: 0.000 min  
 Response: 86582630  
 Conc: 51.85 ng/ml

Instrument :  
 ECD\_D  
 ClientSampleId :  
 PSTDCCC050



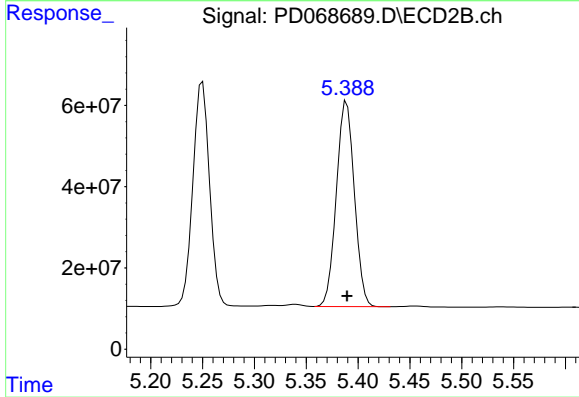
#3 gamma-BHC (Lindane)

R.T.: 4.861 min  
 Delta R.T.: 0.000 min  
 Response: 635924765  
 Conc: 50.86 ng/ml



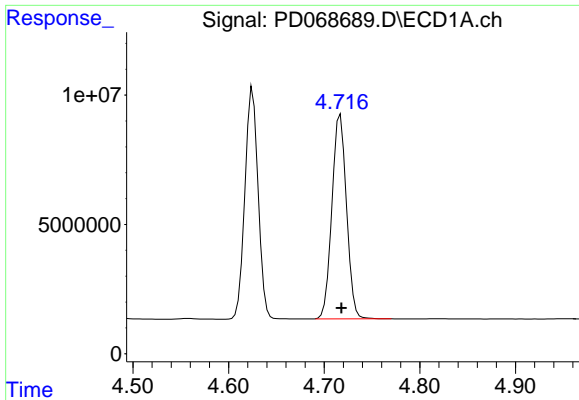
#4 Heptachlor

R.T.: 4.469 min  
 Delta R.T.: 0.000 min  
 Response: 84734524  
 Conc: 51.43 ng/ml



#4 Heptachlor

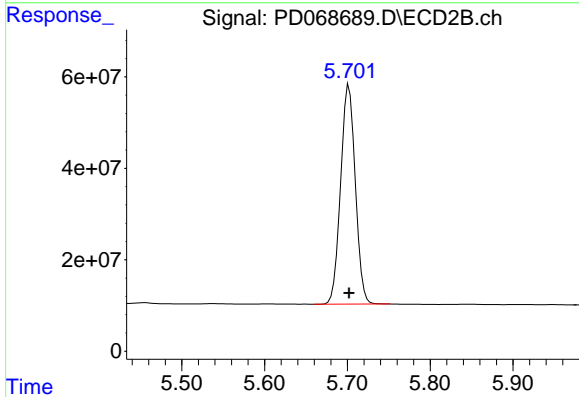
R.T.: 5.389 min  
 Delta R.T.: 0.000 min  
 Response: 610984413  
 Conc: 51.41 ng/ml



#5 Aldrin

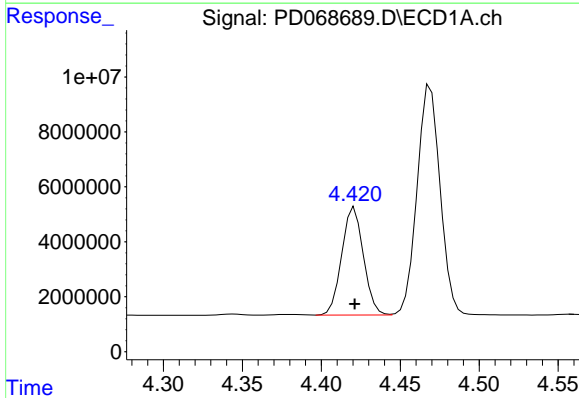
R.T.: 4.717 min  
 Delta R.T.: 0.000 min  
 Response: 83531263  
 Conc: 52.27 ng/ml

Instrument :  
 ECD\_D  
 ClientSampleId :  
 PSTDCCC050



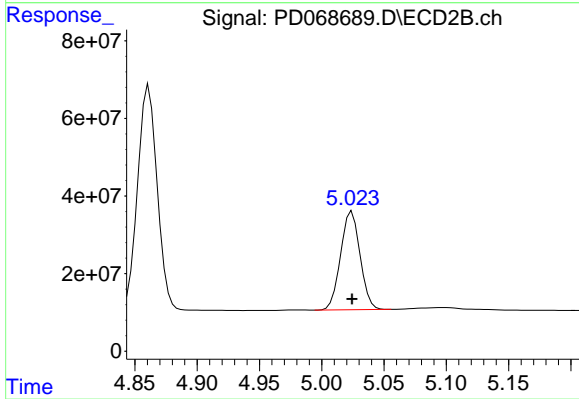
#5 Aldrin

R.T.: 5.702 min  
 Delta R.T.: 0.000 min  
 Response: 590948981  
 Conc: 51.48 ng/ml



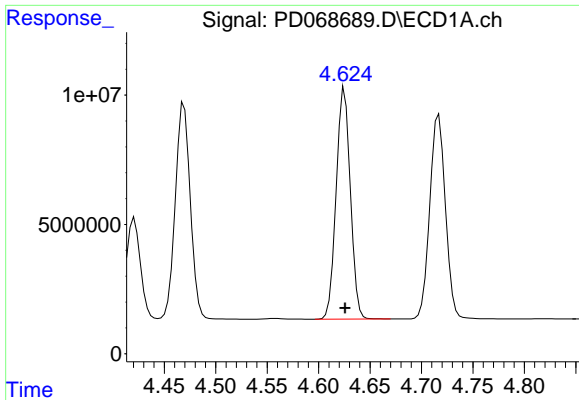
#6 beta-BHC

R.T.: 4.421 min  
 Delta R.T.: 0.000 min  
 Response: 37598453  
 Conc: 50.50 ng/ml



#6 beta-BHC

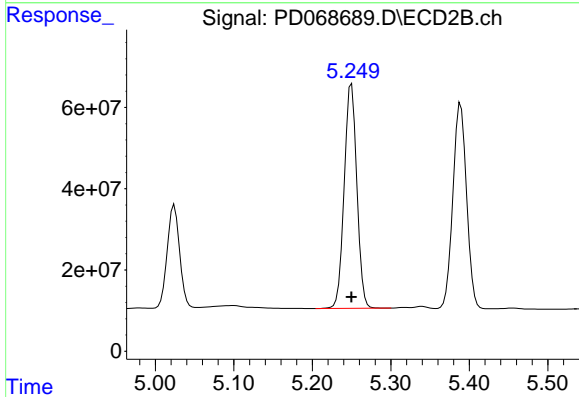
R.T.: 5.024 min  
 Delta R.T.: 0.000 min  
 Response: 277139139  
 Conc: 50.48 ng/ml



#7 delta-BHC

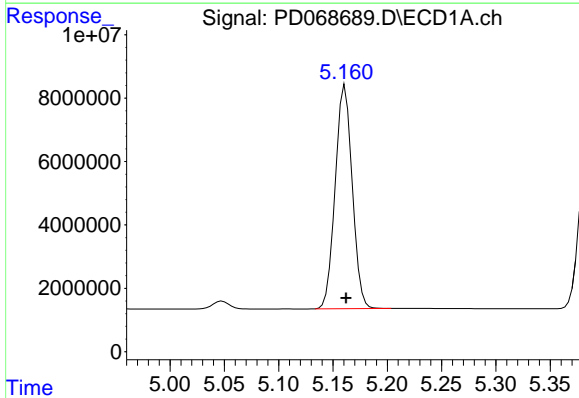
R.T.: 4.625 min  
 Delta R.T.: 0.000 min  
 Response: 85657168  
 Conc: 52.41 ng/ml

Instrument :  
 ECD\_D  
 ClientSampleId :  
 PSTDCCC050



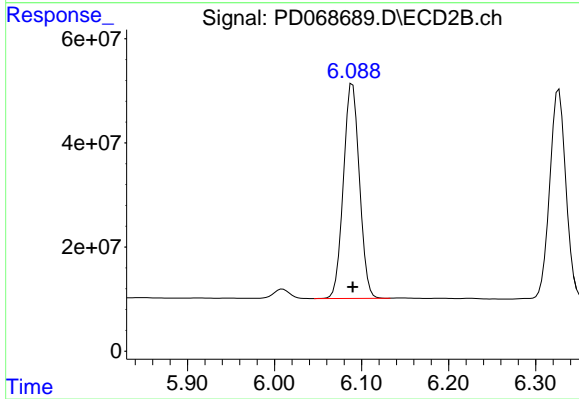
#7 delta-BHC

R.T.: 5.250 min  
 Delta R.T.: 0.000 min  
 Response: 619142085  
 Conc: 51.48 ng/ml



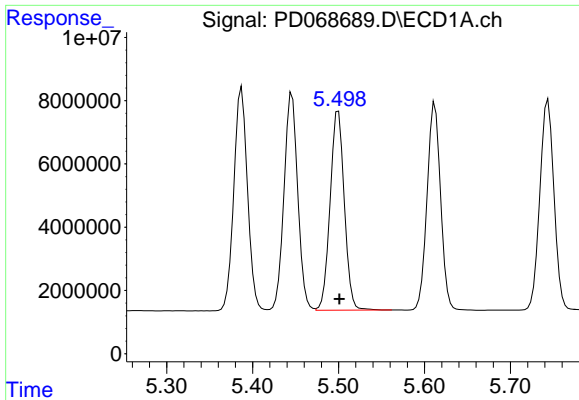
#8 Heptachlor epoxide

R.T.: 5.161 min  
 Delta R.T.: 0.000 min  
 Response: 76905893  
 Conc: 51.43 ng/ml



#8 Heptachlor epoxide

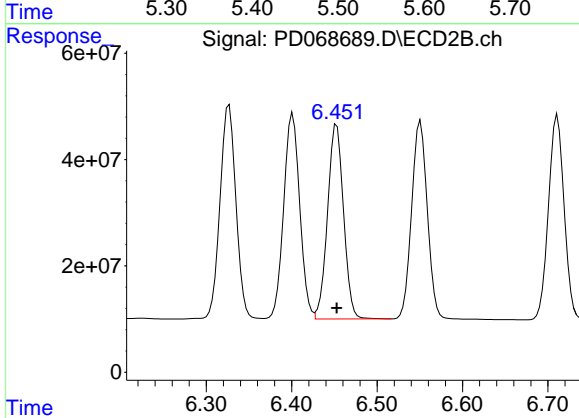
R.T.: 6.090 min  
 Delta R.T.: 0.000 min  
 Response: 526608843  
 Conc: 50.43 ng/ml



#9 Endosulfan I

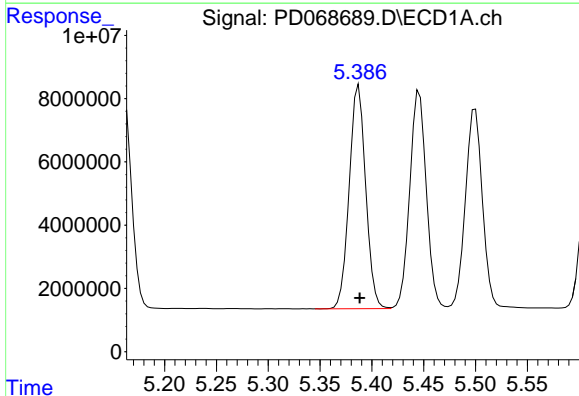
R.T.: 5.500 min  
 Delta R.T.: -0.001 min  
 Response: 72093133  
 Conc: 51.52 ng/ml

Instrument :  
 ECD\_D  
 ClientSampleId :  
 PSTDCCC050



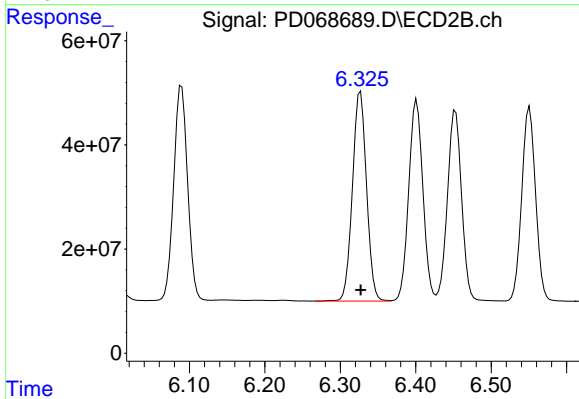
#9 Endosulfan I

R.T.: 6.453 min  
 Delta R.T.: 0.000 min  
 Response: 477292379  
 Conc: 50.89 ng/ml



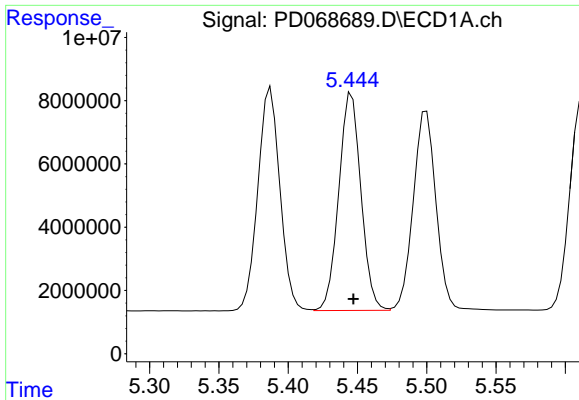
#10 gamma-Chlordane

R.T.: 5.387 min  
 Delta R.T.: 0.000 min  
 Response: 78009395  
 Conc: 51.43 ng/ml



#10 gamma-Chlordane

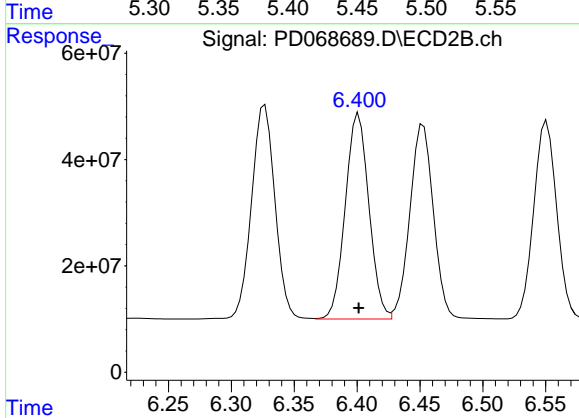
R.T.: 6.327 min  
 Delta R.T.: 0.000 min  
 Response: 522181309  
 Conc: 50.66 ng/ml



#11 alpha-Chlordane

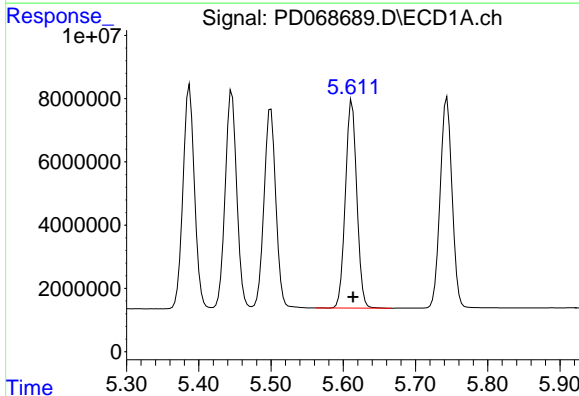
R.T.: 5.446 min  
 Delta R.T.: -0.001 min  
 Response: 76658678  
 Conc: 51.29 ng/ml

Instrument :  
 ECD\_D  
 ClientSampleId :  
 PSTDCCC050



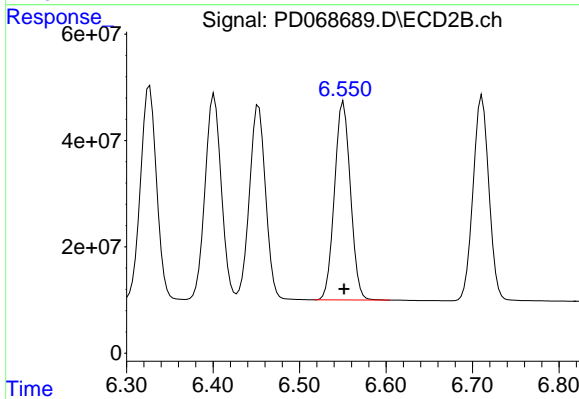
#11 alpha-Chlordane

R.T.: 6.401 min  
 Delta R.T.: 0.000 min  
 Response: 505204993  
 Conc: 50.74 ng/ml



#12 4,4'-DDE

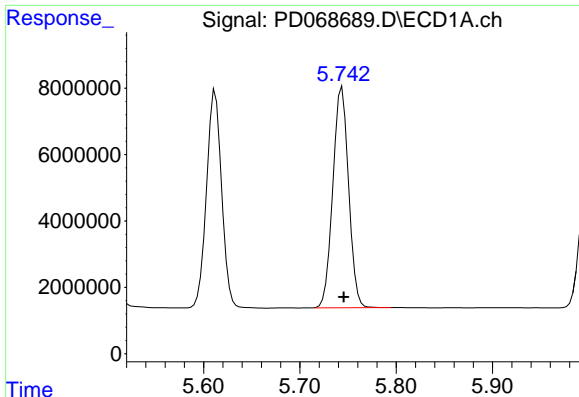
R.T.: 5.612 min  
 Delta R.T.: -0.002 min  
 Response: 71504567  
 Conc: 52.27 ng/ml



#12 4,4'-DDE

R.T.: 6.551 min  
 Delta R.T.: 0.000 min  
 Response: 475142099  
 Conc: 51.27 ng/ml

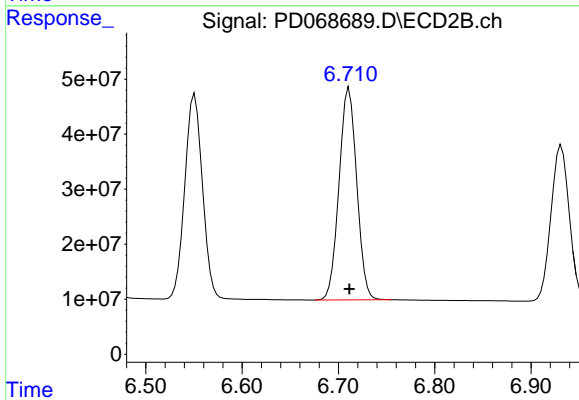




#13 Dieldrin

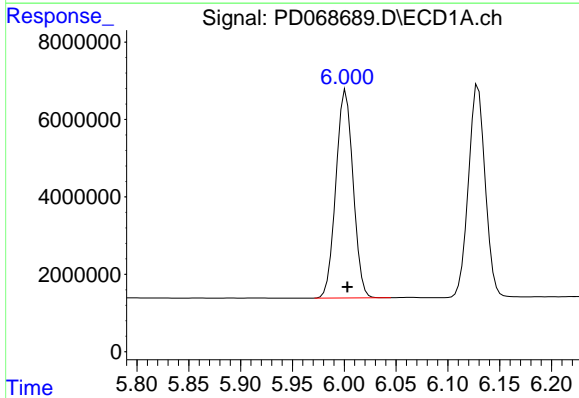
R.T.: 5.744 min  
 Delta R.T.: -0.002 min  
 Response: 75653188  
 Conc: 51.81 ng/ml

Instrument :  
 ECD\_D  
 ClientSampleId :  
 PSTDCCC050



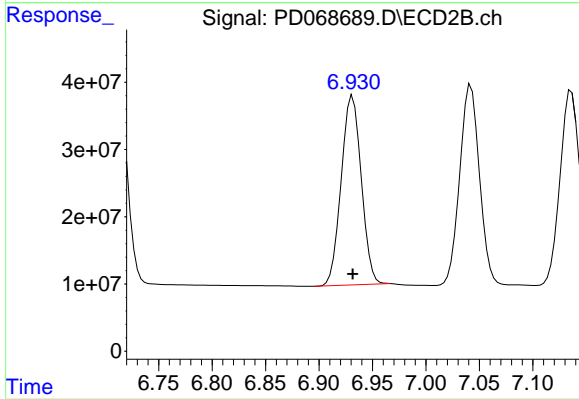
#13 Dieldrin

R.T.: 6.711 min  
 Delta R.T.: 0.000 min  
 Response: 490652235  
 Conc: 50.51 ng/ml



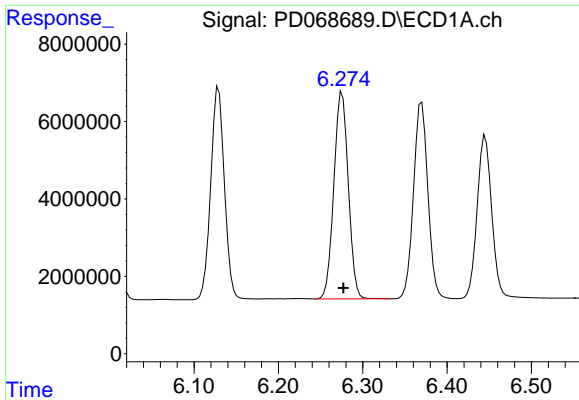
#14 Endrin

R.T.: 6.002 min  
 Delta R.T.: -0.001 min  
 Response: 62117590  
 Conc: 47.15 ng/ml



#14 Endrin

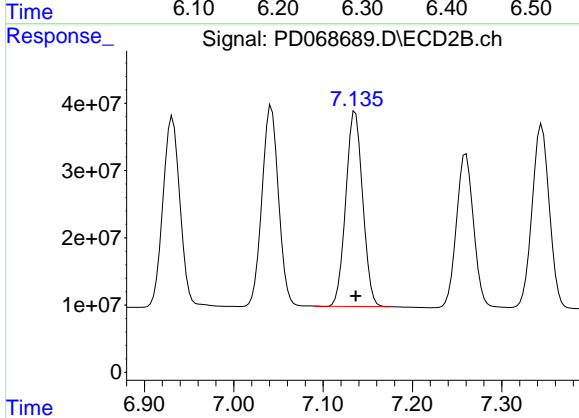
R.T.: 6.931 min  
 Delta R.T.: 0.000 min  
 Response: 368536977  
 Conc: 47.63 ng/ml



#15 Endosulfan II

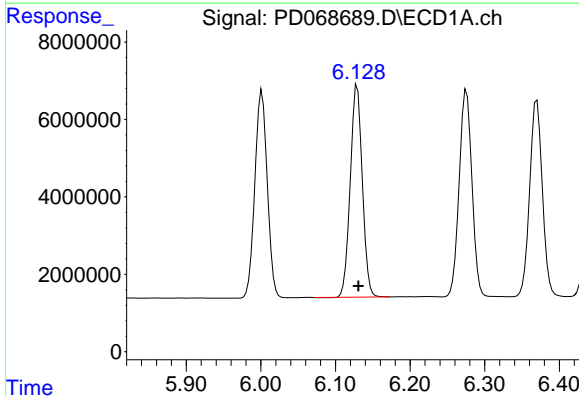
R.T.: 6.276 min  
 Delta R.T.: -0.001 min  
 Response: 63507976  
 Conc: 50.95 ng/ml

Instrument :  
 ECD\_D  
 ClientSampleId :  
 PSTDCCC050



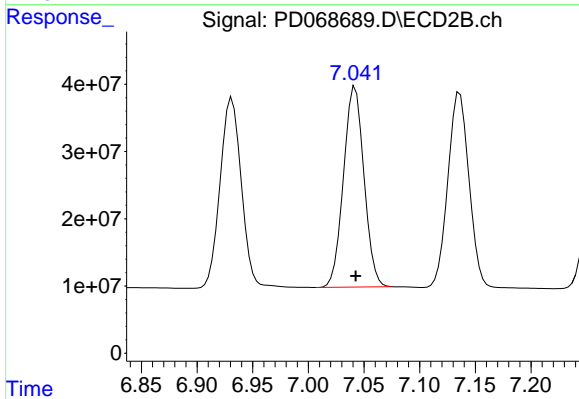
#15 Endosulfan II

R.T.: 7.136 min  
 Delta R.T.: 0.000 min  
 Response: 381041942  
 Conc: 50.41 ng/ml



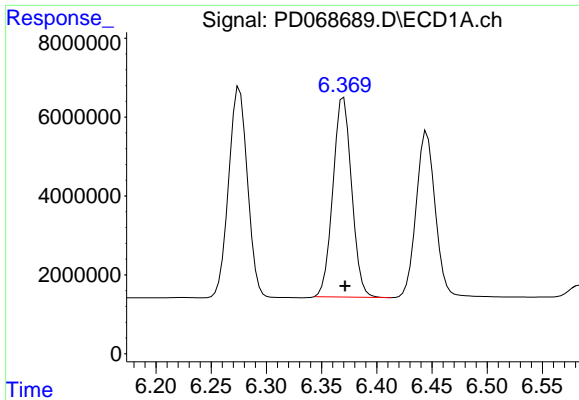
#16 4,4'-DDD

R.T.: 6.129 min  
 Delta R.T.: -0.002 min  
 Response: 61493737  
 Conc: 52.15 ng/ml



#16 4,4'-DDD

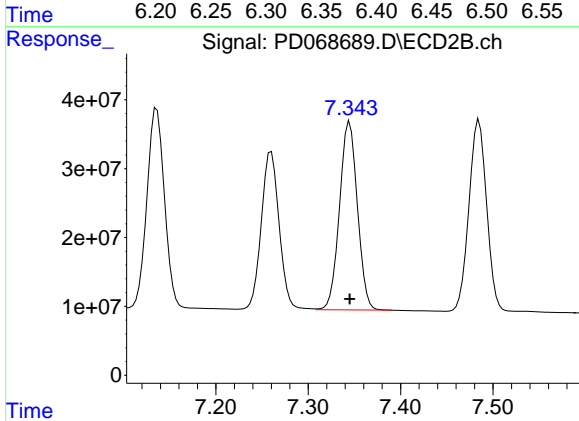
R.T.: 7.042 min  
 Delta R.T.: 0.000 min  
 Response: 382537786  
 Conc: 51.80 ng/ml



#17 4,4'-DDT

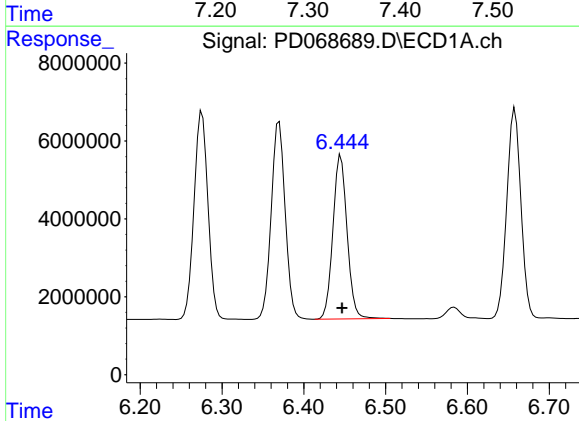
R.T.: 6.370 min  
 Delta R.T.: -0.001 min  
 Response: 59700654  
 Conc: 49.67 ng/ml

Instrument :  
 ECD\_D  
 ClientSampleId :  
 PSTDCCC050



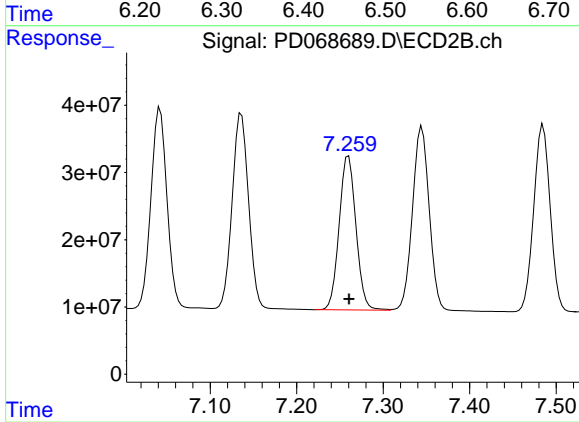
#17 4,4'-DDT

R.T.: 7.345 min  
 Delta R.T.: 0.000 min  
 Response: 367910570  
 Conc: 50.08 ng/ml



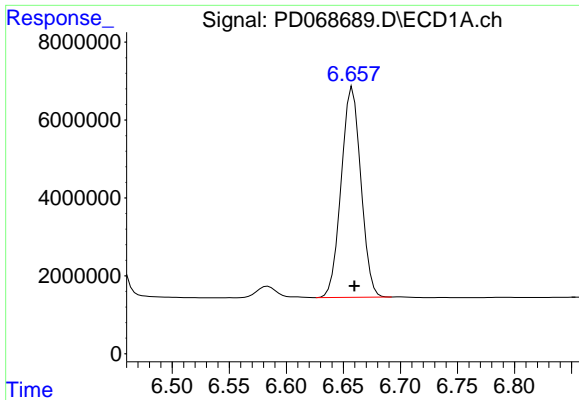
#18 Endrin aldehyde

R.T.: 6.445 min  
 Delta R.T.: -0.001 min  
 Response: 50631603  
 Conc: 51.00 ng/ml



#18 Endrin aldehyde

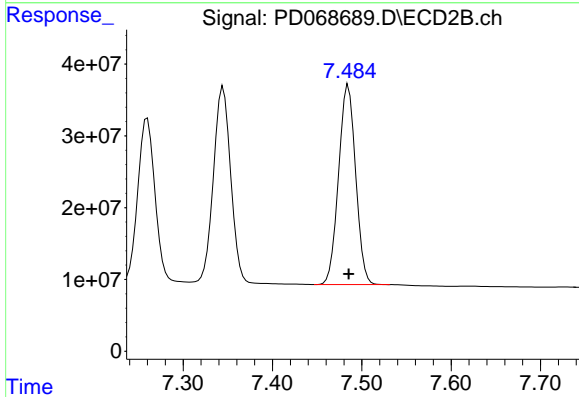
R.T.: 7.260 min  
 Delta R.T.: 0.000 min  
 Response: 307118886  
 Conc: 50.75 ng/ml



#19 Endosulfan Sulfate

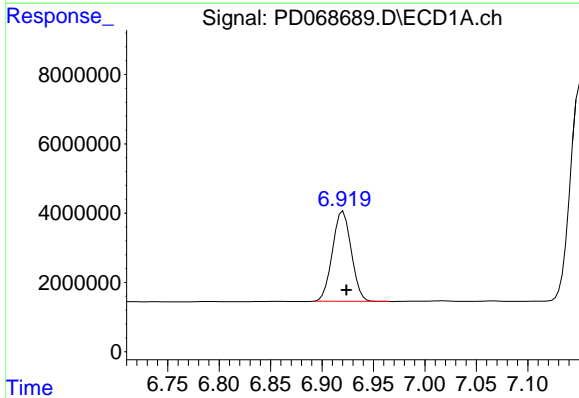
R.T.: 6.658 min  
 Delta R.T.: -0.001 min  
 Response: 64731393  
 Conc: 50.62 ng/ml

Instrument :  
 ECD\_D  
 ClientSampleId :  
 PSTDCCC050



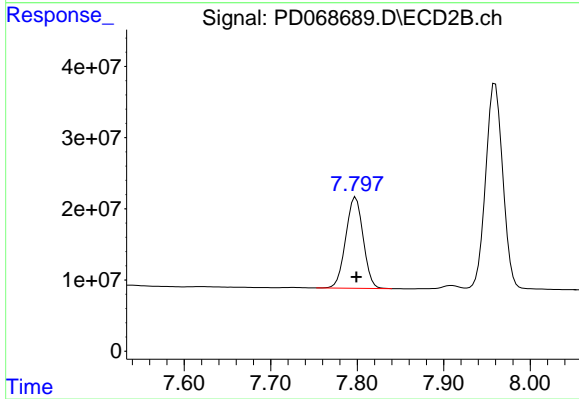
#19 Endosulfan Sulfate

R.T.: 7.485 min  
 Delta R.T.: 0.000 min  
 Response: 369499639  
 Conc: 50.24 ng/ml



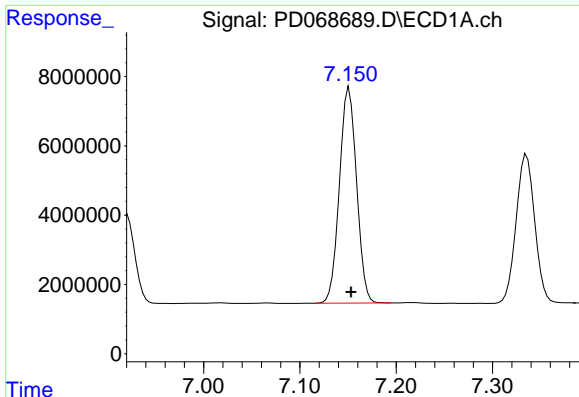
#20 Methoxychlor

R.T.: 6.920 min  
 Delta R.T.: -0.003 min  
 Response: 33119916  
 Conc: 47.79 ng/ml



#20 Methoxychlor

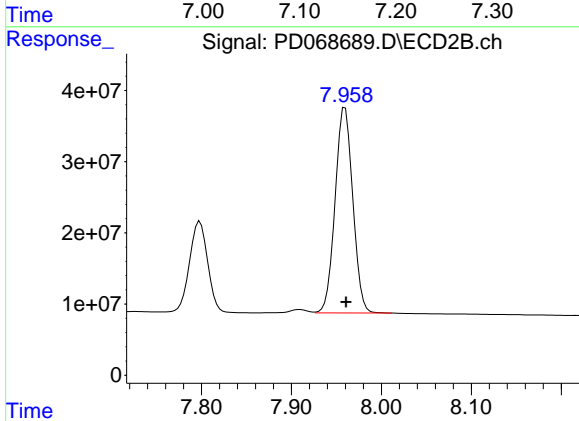
R.T.: 7.798 min  
 Delta R.T.: 0.000 min  
 Response: 178775939  
 Conc: 49.04 ng/ml



#21 Endrin ketone

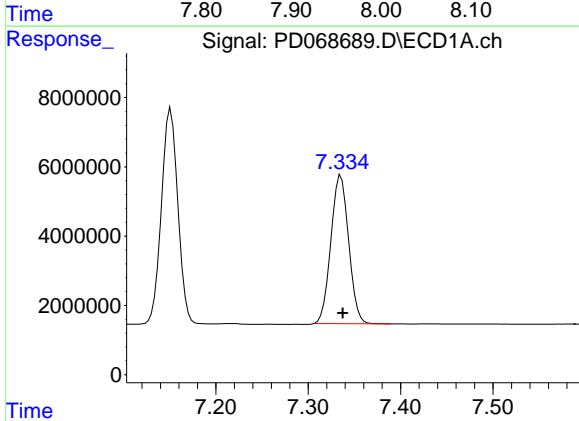
R.T.: 7.151 min  
 Delta R.T.: -0.002 min  
 Response: 76847109  
 Conc: 52.20 ng/ml

Instrument :  
 ECD\_D  
 ClientSampleId :  
 PSTDCCC050



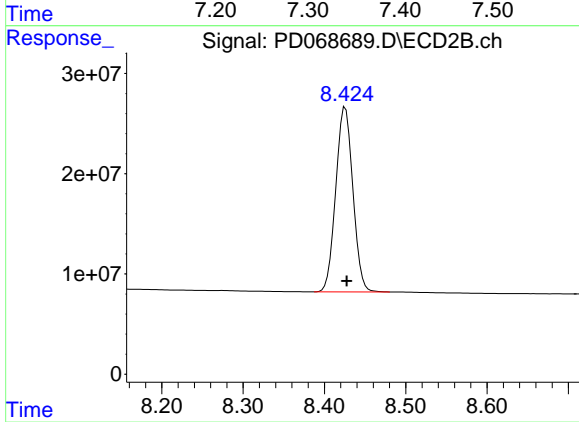
#21 Endrin ketone

R.T.: 7.960 min  
 Delta R.T.: -0.001 min  
 Response: 394751947  
 Conc: 50.94 ng/ml



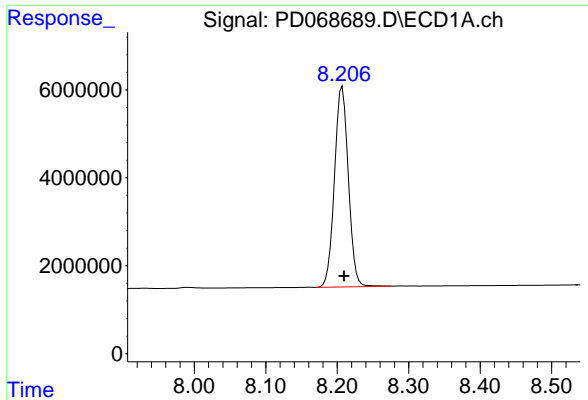
#22 Mirex

R.T.: 7.335 min  
 Delta R.T.: -0.002 min  
 Response: 57202506  
 Conc: 48.26 ng/ml



#22 Mirex

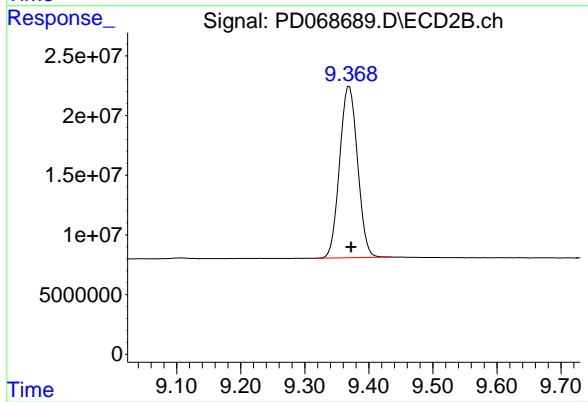
R.T.: 8.426 min  
 Delta R.T.: -0.002 min  
 Response: 269613656  
 Conc: 49.19 ng/ml



#28 Decachlorobiphenyl

R.T.: 8.207 min  
Delta R.T.: -0.002 min  
Response: 61317288  
Conc: 48.53 ng/ml

Instrument :  
ECD\_D  
ClientSampleId :  
PSTDCCC050



#28 Decachlorobiphenyl

R.T.: 9.370 min  
Delta R.T.: -0.003 min  
Response: 278841337  
Conc: 49.21 ng/ml