

Data Path : Z:\pestpcbsrv\HPCHEM1\ECD_D\Data\PD031922\
 Data File : PD068690.D
 Signal(s) : Signal #1: ECD1A.ch Signal #2: ECD2B.ch
 Acq On : 18 Mar 2022 15:15
 Operator : AR\AJ
 Sample : N1937-02
 Misc :
 ALS Vial : 12 Sample Multiplier: 1

Instrument :
 ECD_D
ClientSampleId :
 OB-722

Manual Integrations
APPROVED

Reviewed By :Abdul Mirza 03/21/2022
 Supervised By :mohammad ahmed 03/21/2022

Integration File signal 1: autoint1.e
 Integration File signal 2: autoint2.e
 Quant Time: Mar 19 00:45:47 2022
 Quant Method : Z:\pestpcbsrv\HPCHEM1\ECD_D\Method\PD031222.M
 Quant Title : GC Extractables
 QLast Update : Mon Mar 14 03:30:32 2022
 Response via : Initial Calibration
 Integrator: ChemStation

Volume Inj. : 2 µl
 Signal #1 Phase : ZB-MR2 Signal #2 Phase: ZB-MR1
 Signal #1 Info : 30M x 0.32mm x0.2 Signal #2 Info : 30M x 0.32mm x 0.50µm

Compound	RT#1	RT#2	Resp#1	Resp#2	ng/ml	ng/ml

System Monitoring Compounds						
1) SA Tetrachlo...	3.454	4.176	26832385	198.2E6	22.099m	20.730
28) SA Decachlor...	8.214	9.374	17640549	79306895	13.963m	13.995

Target Compounds

(f)=RT Delta > 1/2 Window (#)=Amounts differ by > 25% (m)=manual int.

Data Path : Z:\pestpcbsrv\HPCHEM1\ECD_D\Data\PD031922\
 Data File : PD068690.D
 Signal(s) : Signal #1: ECD1A.ch Signal #2: ECD2B.ch
 Acq On : 18 Mar 2022 15:15
 Operator : AR\AJ
 Sample : N1937-02
 Misc :
 ALS Vial : 12 Sample Multiplier: 1

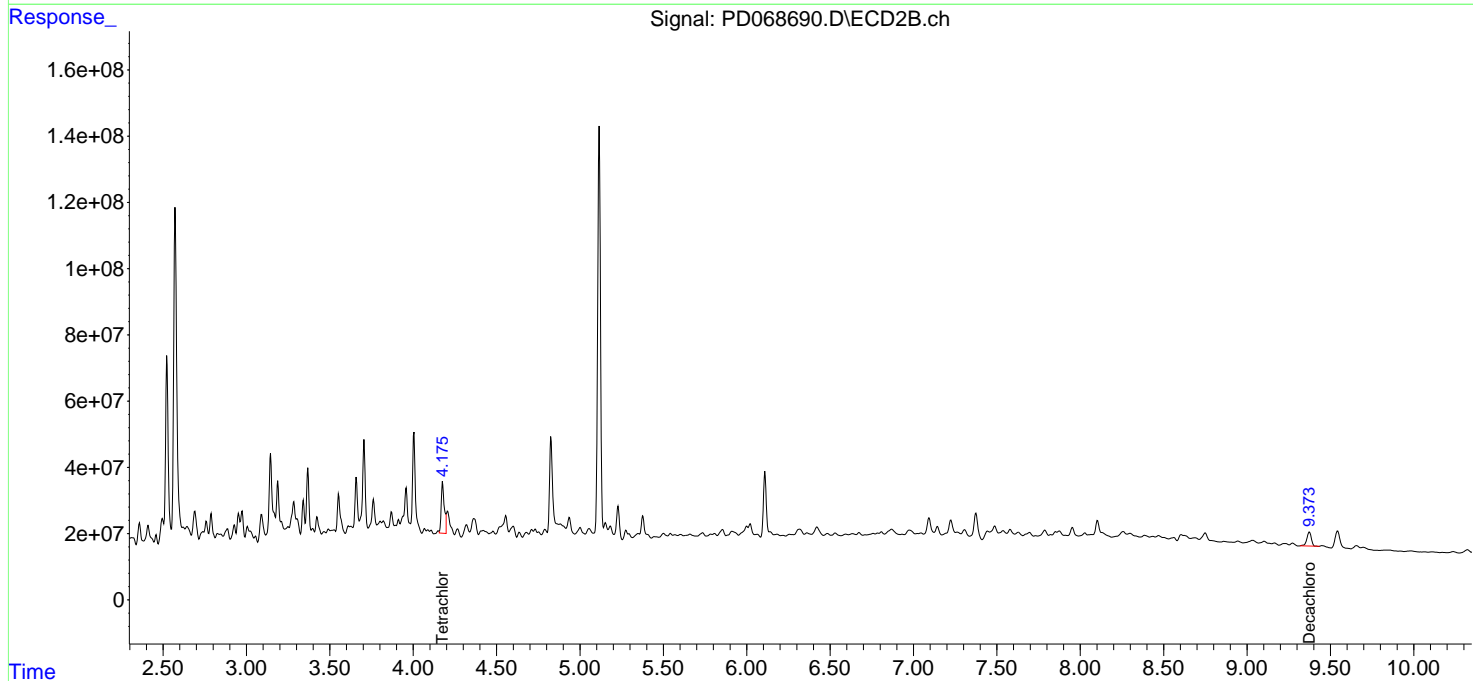
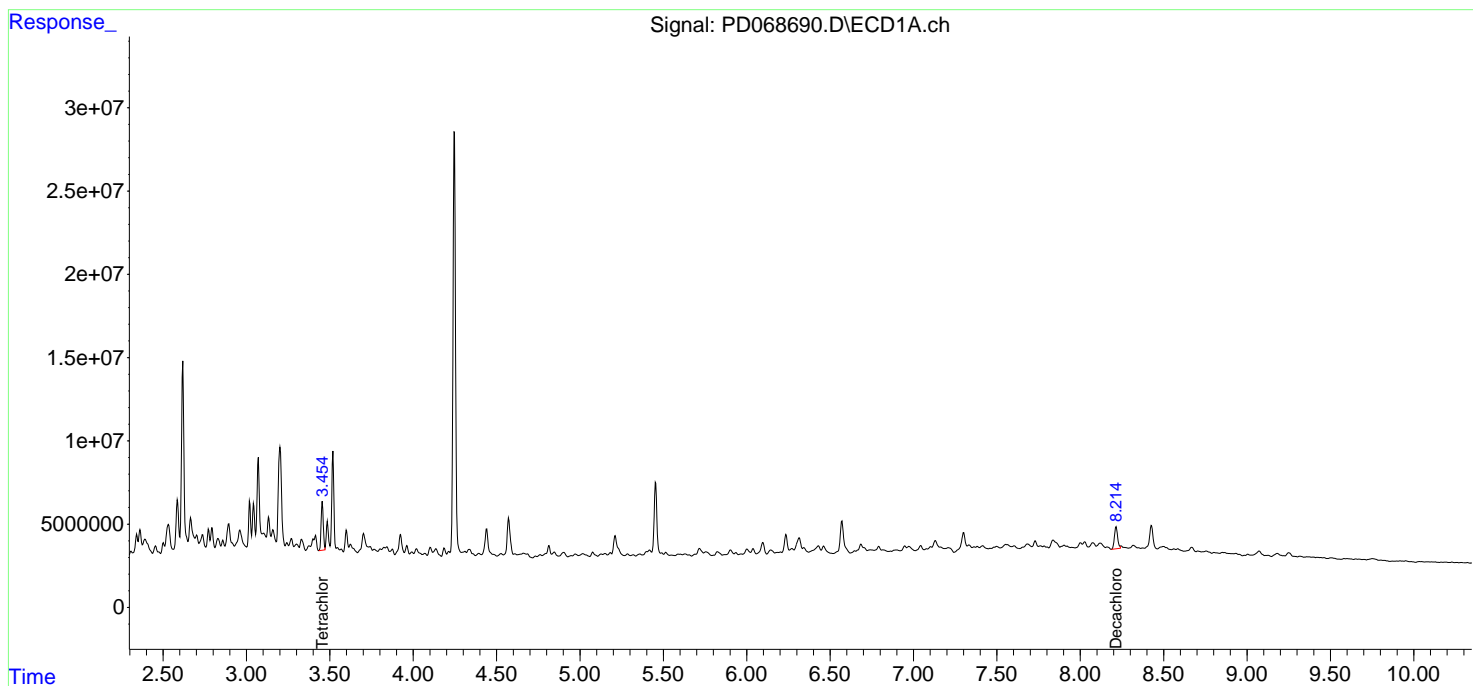
Instrument :
 ECD_D
ClientSampleId :
 OB-722

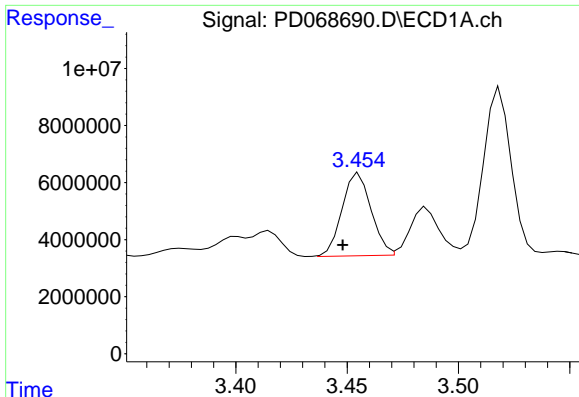
Manual Integrations
APPROVED

Reviewed By :Abdul Mirza 03/21/2022
 Supervised By :mohammad ahmed 03/21/2022

Integration File signal 1: autoint1.e
 Integration File signal 2: autoint2.e
 Quant Time: Mar 19 00:45:47 2022
 Quant Method : Z:\pestpcbsrv\HPCHEM1\ECD_D\Method\PD031222.M
 Quant Title : GC Extractables
 QLast Update : Mon Mar 14 03:30:32 2022
 Response via : Initial Calibration
 Integrator: ChemStation

Volume Inj. : 2 µl
 Signal #1 Phase : ZB-MR2 Signal #2 Phase: ZB-MR1
 Signal #1 Info : 30M x 0.32mm x0.2 Signal #2 Info : 30M x 0.32mm x 0.50µm





#1 Tetrachloro-m-xylene

R.T.: 3.454 min
 Delta R.T.: 0.006 min
 Response: 26832385
 Conc: 22.10 ng/ml

Instrument :

ECD_D

ClientSampleId :

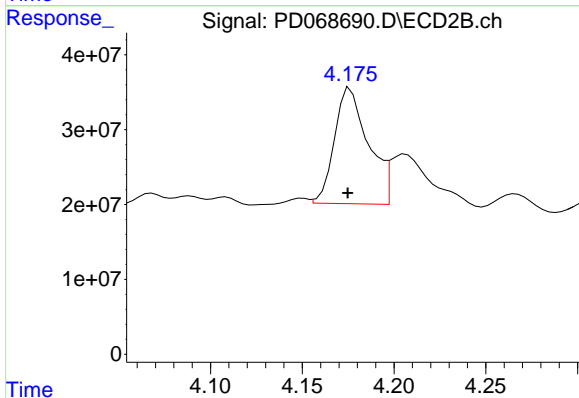
OB-722

Manual Integrations

APPROVED

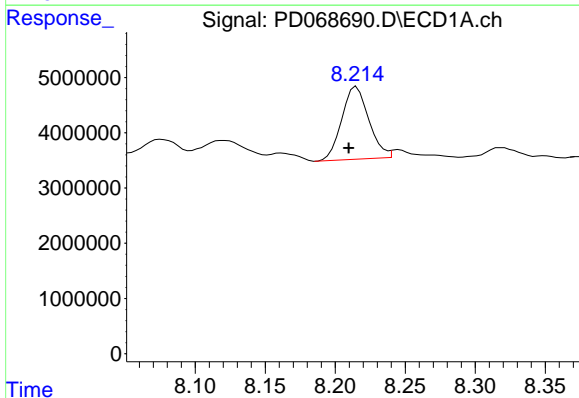
Reviewed By :Abdul Mirza 03/21/2022

Supervised By :mohammad ahmed 03/21/2022



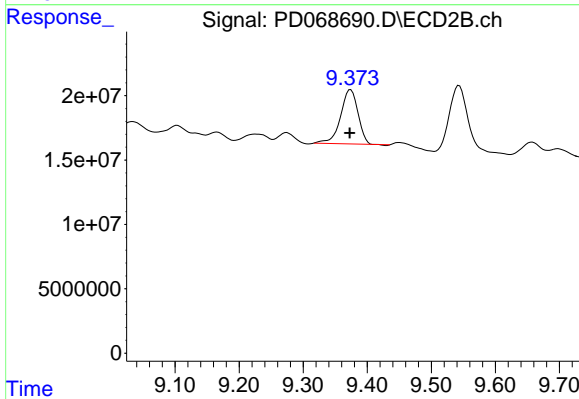
#1 Tetrachloro-m-xylene

R.T.: 4.176 min
 Delta R.T.: 0.002 min
 Response: 198194357
 Conc: 20.73 ng/ml



#28 Decachlorobiphenyl

R.T.: 8.214 min
 Delta R.T.: 0.004 min
 Response: 17640549
 Conc: 13.96 ng/ml m



#28 Decachlorobiphenyl

R.T.: 9.374 min
 Delta R.T.: 0.002 min
 Response: 79306895
 Conc: 14.00 ng/ml