

Data Path : Z:\pestpcbsrv\HPCHEM1\ECD\_D\Data\PD031922\  
 Data File : PD068695.D  
 Signal(s) : Signal #1: ECD1A.ch Signal #2: ECD2B.ch  
 Acq On : 18 Mar 2022 16:55  
 Operator : AR\AJ  
 Sample : N1990-01  
 Misc :  
 ALS Vial : 17 Sample Multiplier: 1

**Instrument :**  
 ECD\_D  
**ClientSampleId :**  
 BI-WEEKLY-INFLUENT

**Manual Integrations**  
**APPROVED**

Reviewed By :Abdul Mirza 03/21/2022  
 Supervised By :mohammad ahmed 03/21/2022

Integration File signal 1: autoint1.e  
 Integration File signal 2: autoint2.e  
 Quant Time: Mar 19 00:48:39 2022  
 Quant Method : Z:\pestpcbsrv\HPCHEM1\ECD\_D\Method\PD031222.M  
 Quant Title : GC Extractables  
 QLast Update : Mon Mar 14 03:30:32 2022  
 Response via : Initial Calibration  
 Integrator: ChemStation

Volume Inj. : 2 µl  
 Signal #1 Phase : ZB-MR2 Signal #2 Phase: ZB-MR1  
 Signal #1 Info : 30M x 0.32mm x0.2 Signal #2 Info : 30M x 0.32mm x 0.50µm

Compound	RT#1	RT#2	Resp#1	Resp#2	ng/ml	ng/ml
-----						
System Monitoring Compounds						
1) SA Tetrachlo...	3.453	4.173	11419424	115.4E6	9.405m	12.070m#
28) SA Decachlor...	8.212	9.372	1340040	118.8E6	1.061m	20.967m#
Target Compounds						
11) B alpha-Chl...	5.453	6.416	14190925	7001346	9.494m	0.703m#
12) B 4,4'-DDE	5.610	6.554	3653845	26081641	2.671	2.814m
17) MA 4,4'-DDT	6.370	7.341	1013246	3907164	0.843m	0.532m#
18) B Endrin al...	6.443	7.257	4884518	20598718	4.920	3.404m#
-----						

(f)=RT Delta > 1/2 Window (#)=Amounts differ by > 25% (m)=manual int.

Data Path : Z:\pestpcbsrv\HPCHEM1\ECD\_D\Data\PD031922\  
 Data File : PD068695.D  
 Signal(s) : Signal #1: ECD1A.ch Signal #2: ECD2B.ch  
 Acq On : 18 Mar 2022 16:55  
 Operator : AR\AJ  
 Sample : N1990-01  
 Misc :  
 ALS Vial : 17 Sample Multiplier: 1

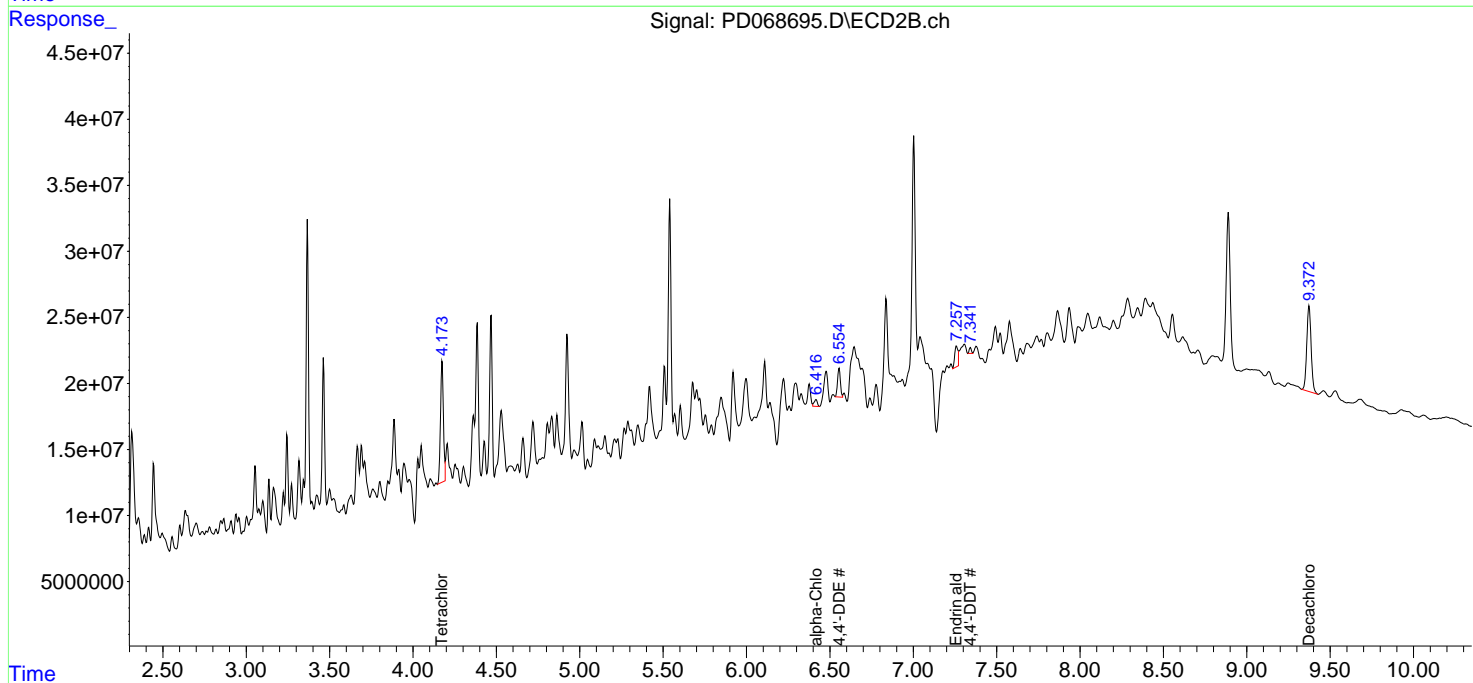
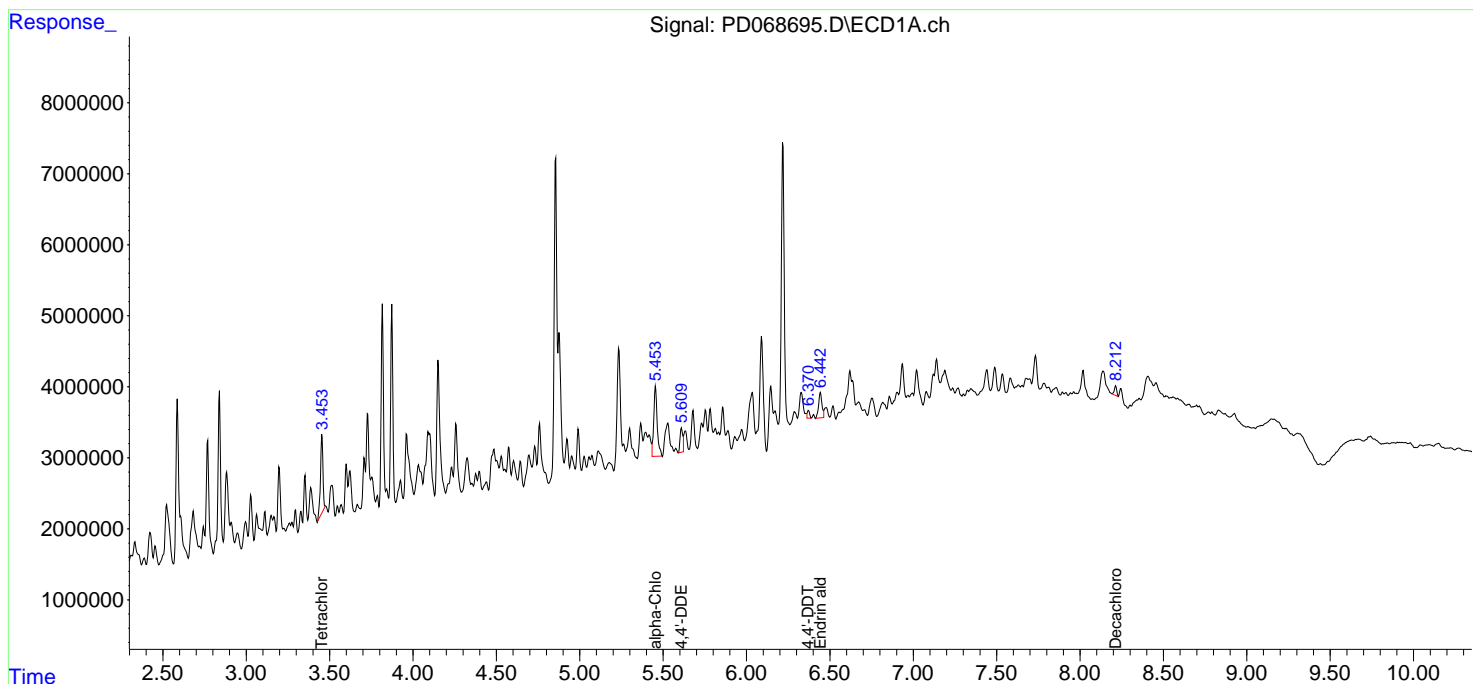
**Instrument :**  
 ECD\_D  
**ClientSampleId :**  
 BI-WEEKLY-INFLUENT

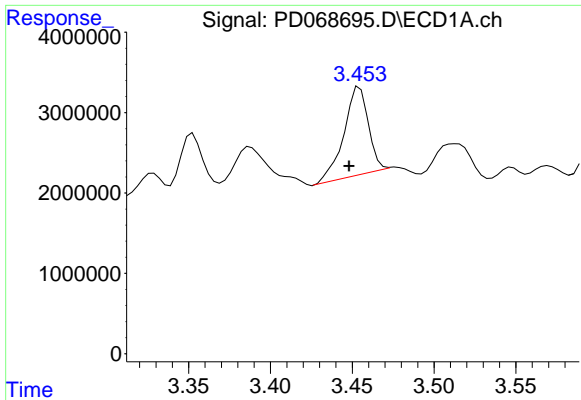
**Manual Integrations**  
**APPROVED**

Reviewed By :Abdul Mirza 03/21/2022  
 Supervised By :mohammad ahmed 03/21/2022

Integration File signal 1: autoint1.e  
 Integration File signal 2: autoint2.e  
 Quant Time: Mar 19 00:48:39 2022  
 Quant Method : Z:\pestpcbsrv\HPCHEM1\ECD\_D\Method\PD031222.M  
 Quant Title : GC Extractables  
 QLast Update : Mon Mar 14 03:30:32 2022  
 Response via : Initial Calibration  
 Integrator: ChemStation

Volume Inj. : 2 µl  
 Signal #1 Phase : ZB-MR2 Signal #2 Phase: ZB-MR1  
 Signal #1 Info : 30M x 0.32mm x0.2 Signal #2 Info : 30M x 0.32mm x 0.50µm





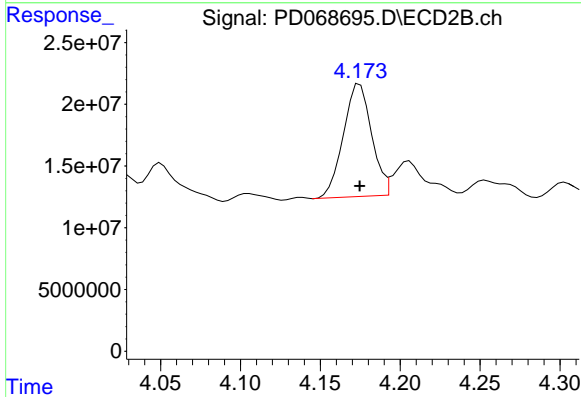
#1 Tetrachloro-m-xylene

R.T.: 3.453 min  
 Delta R.T.: 0.005 min  
 Response: 11419424  
 Conc: 9.41 ng/ml

Instrument : ECD\_D  
 ClientSampleId : BI-WEEKLY-INFLUENT

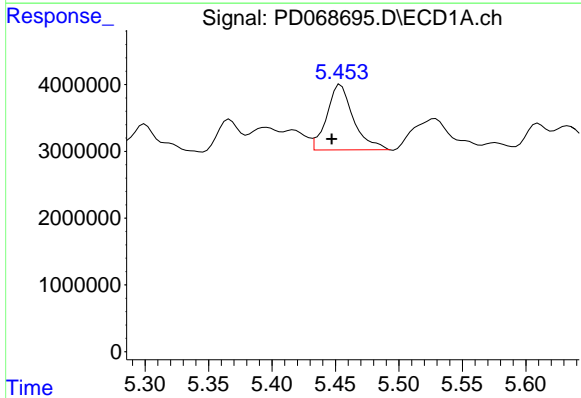
Manual Integrations  
 APPROVED

Reviewed By :Abdul Mirza 03/21/2022  
 Supervised By :mohammad ahmed 03/21/2022



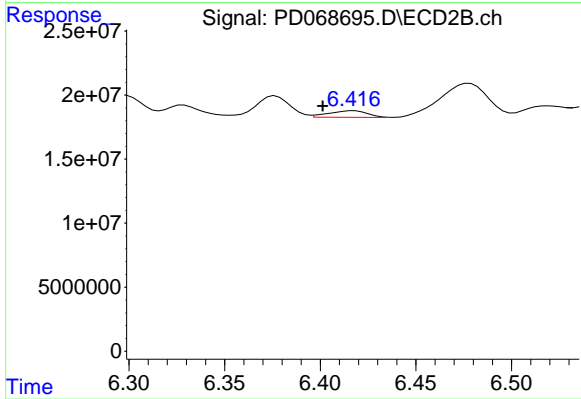
#1 Tetrachloro-m-xylene

R.T.: 4.173 min  
 Delta R.T.: -0.001 min  
 Response: 115395083  
 Conc: 12.07 ng/ml m



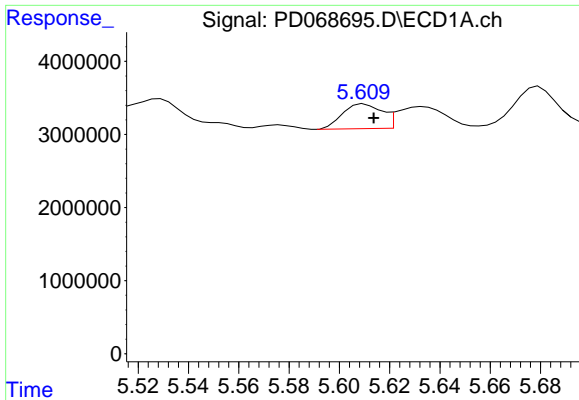
#11 alpha-Chlordane

R.T.: 5.453 min  
 Delta R.T.: 0.006 min  
 Response: 14190925  
 Conc: 9.49 ng/ml m



#11 alpha-Chlordane

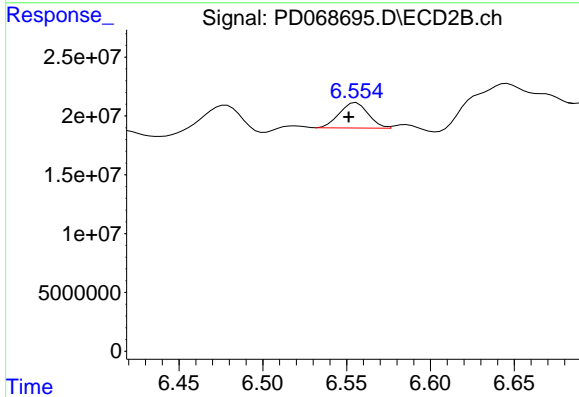
R.T.: 6.416 min  
 Delta R.T.: 0.015 min  
 Response: 7001346  
 Conc: 0.70 ng/ml m



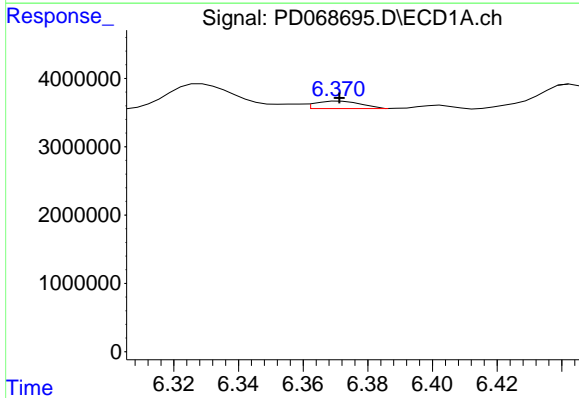
#12 4,4'-DDE  
 R.T.: 5.610 min  
 Delta R.T.: -0.004 min  
 Response: 3653845  
 Conc: 2.67 ng/ml

Instrument : ECD\_D  
 ClientSampleId : BI-WEEKLY-INFLUENT

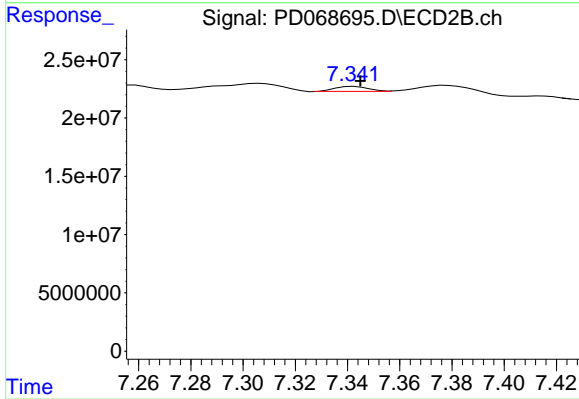
Manual Integrations  
**APPROVED**  
 Reviewed By :Abdul Mirza 03/21/2022  
 Supervised By :mohammad ahmed 03/21/2022



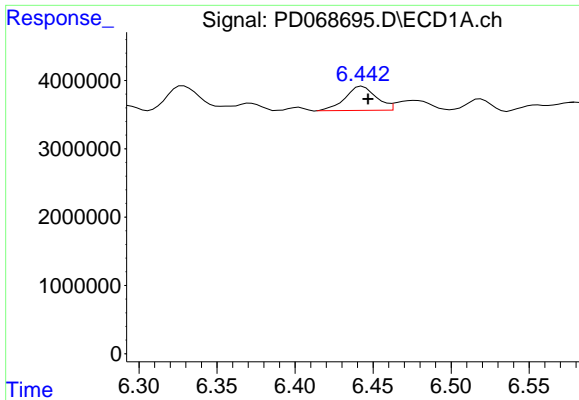
#12 4,4'-DDE  
 R.T.: 6.554 min  
 Delta R.T.: 0.003 min  
 Response: 26081641  
 Conc: 2.81 ng/ml m



#17 4,4'-DDT  
 R.T.: 6.370 min  
 Delta R.T.: -0.001 min  
 Response: 1013246  
 Conc: 0.84 ng/ml m



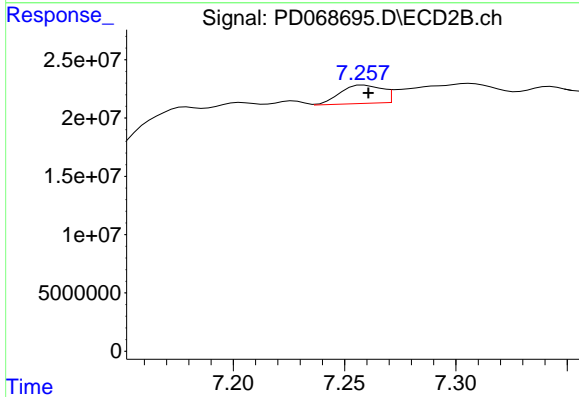
#17 4,4'-DDT  
 R.T.: 7.341 min  
 Delta R.T.: -0.004 min  
 Response: 3907164  
 Conc: 0.53 ng/ml m



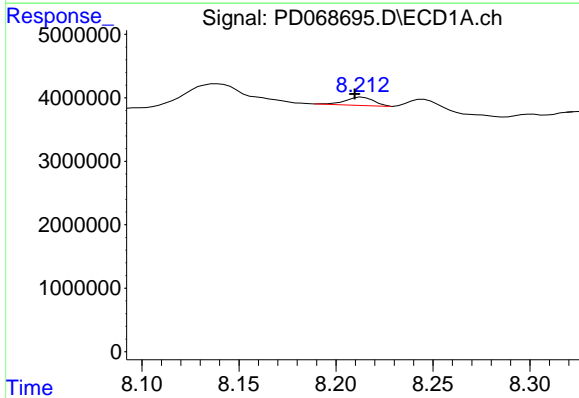
#18 Endrin aldehyde  
 R.T.: 6.443 min  
 Delta R.T.: -0.004 min  
 Response: 4884518  
 Conc: 4.92 ng/ml

Instrument : ECD\_D  
 Client Sample Id : BI-WEEKLY-INFLUENT

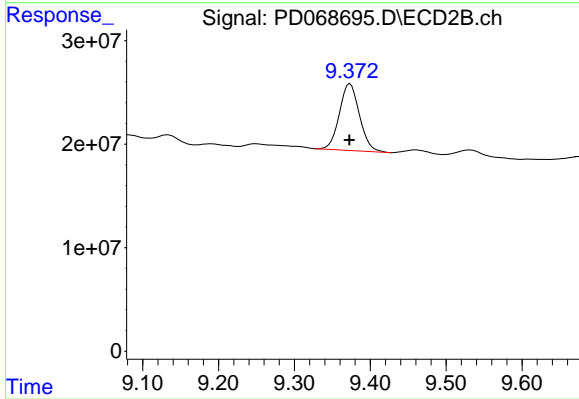
Manual Integrations  
**APPROVED**  
 Reviewed By :Abdul Mirza 03/21/2022  
 Supervised By :mohammad ahmed 03/21/2022



#18 Endrin aldehyde  
 R.T.: 7.257 min  
 Delta R.T.: -0.004 min  
 Response: 20598718  
 Conc: 3.40 ng/ml m



#28 Decachlorobiphenyl  
 R.T.: 8.212 min  
 Delta R.T.: 0.003 min  
 Response: 1340040  
 Conc: 1.06 ng/ml m



#28 Decachlorobiphenyl  
 R.T.: 9.372 min  
 Delta R.T.: 0.000 min  
 Response: 118815024  
 Conc: 20.97 ng/ml m