

Data Path : Z:\pestpcbsrv\HPCHEM1\ECD_D\Data\PD031922\
 Data File : PD068697.D
 Signal(s) : Signal #1: ECD1A.ch Signal #2: ECD2B.ch
 Acq On : 18 Mar 2022 18:41
 Operator : AR\AJ
 Sample : PB143363BSD
 Misc :
 ALS Vial : 19 Sample Multiplier: 1

Instrument :
 ECD_D
ClientSampleId :
 PB143363BSD

Manual Integrations
APPROVED
 Reviewed By :Abdul Mirza 03/21/2022
 Supervised By :mohammad ahmed 03/21/2022

Integration File signal 1: autoint1.e
 Integration File signal 2: autoint2.e
 Quant Time: Mar 19 00:49:46 2022
 Quant Method : Z:\pestpcbsrv\HPCHEM1\ECD_D\Method\PD031222.M
 Quant Title : GC Extractables
 QLast Update : Mon Mar 14 03:30:32 2022
 Response via : Initial Calibration
 Integrator: ChemStation

Volume Inj. : 2 µl
 Signal #1 Phase : ZB-MR2 Signal #2 Phase: ZB-MR1
 Signal #1 Info : 30M x 0.32mm x0.2 Signal #2 Info : 30M x 0.32mm x 0.50µm

Compound	RT#1	RT#2	Resp#1	Resp#2	ng/ml	ng/ml

System Monitoring Compounds						
1) SA Tetrachlo...	3.453	4.176	19387727	159.3E6	15.968	16.663
28) SA Decachlor...	8.213	9.373	19918408	91077773	15.766	16.072
Target Compounds						
2) A alpha-BHC	3.893	4.572	17992448	152.2E6	9.937	11.062
3) MA gamma-BHC...	4.177	4.863	17095198	139.2E6	10.238	11.136
4) MA Heptachlor	4.475	5.391	17747827	137.7E6	10.773	11.585
5) MB Aldrin	4.723	5.703	16803566	131.1E6	10.515	11.421
6) B beta-BHC	4.427	5.026	8630281	62144638	11.591	11.320
7) B delta-BHC	4.632	5.251	16633752	131.1E6	10.178	10.899
8) B Heptachlo...	5.168	6.089	16195113	138.4E6	10.829	13.256m
9) A Endosulfan I	5.507	6.453	15209674	107.2E6	10.870	11.427m
10) B gamma-Chl...	5.394	6.327	16282331	115.5E6	10.734	11.206m
11) B alpha-Chl...	5.452	6.402	16195644	113.1E6	10.836	11.358m
12) B 4,4'-DDE	5.617	6.553	14129465	100.9E6	10.328m	10.887
13) MA Dieldrin	5.750	6.713	15338223	107.1E6	10.505	11.024
14) MA Endrin	6.009	6.931	15377980	66275563	11.674	8.565 #
15) B Endosulfa...	6.282	7.138	13636371	84064308	10.941	11.122
16) A 4,4'-DDD	6.136	7.044	12804560	83359009	10.858	11.287
17) MA 4,4'-DDT	6.376	7.347	11776331	79399148	9.798	10.807
18) B Endrin al...	6.452	7.262	10768594	65000456	10.847	10.741
19) B Endosulfa...	6.664	7.486	14216121	82662734	11.117	11.239
20) A Methoxychlor	6.927	7.798	7407330	35450279	10.688	9.725m
21) B Endrin ke...	7.155	7.962	14716268	86320776	9.996m	11.140
22) Mirex	7.342	8.428	12934003	61675421	10.913	11.252

(f)=RT Delta > 1/2 Window (#)=Amounts differ by > 25% (m)=manual int.

Data Path : Z:\pestpcbsrv\HPCHEM1\ECD_D\Data\PD031922\
 Data File : PD068697.D
 Signal(s) : Signal #1: ECD1A.ch Signal #2: ECD2B.ch
 Acq On : 18 Mar 2022 18:41
 Operator : AR\AJ
 Sample : PB143363BSD
 Misc :
 ALS Vial : 19 Sample Multiplier: 1

Instrument :

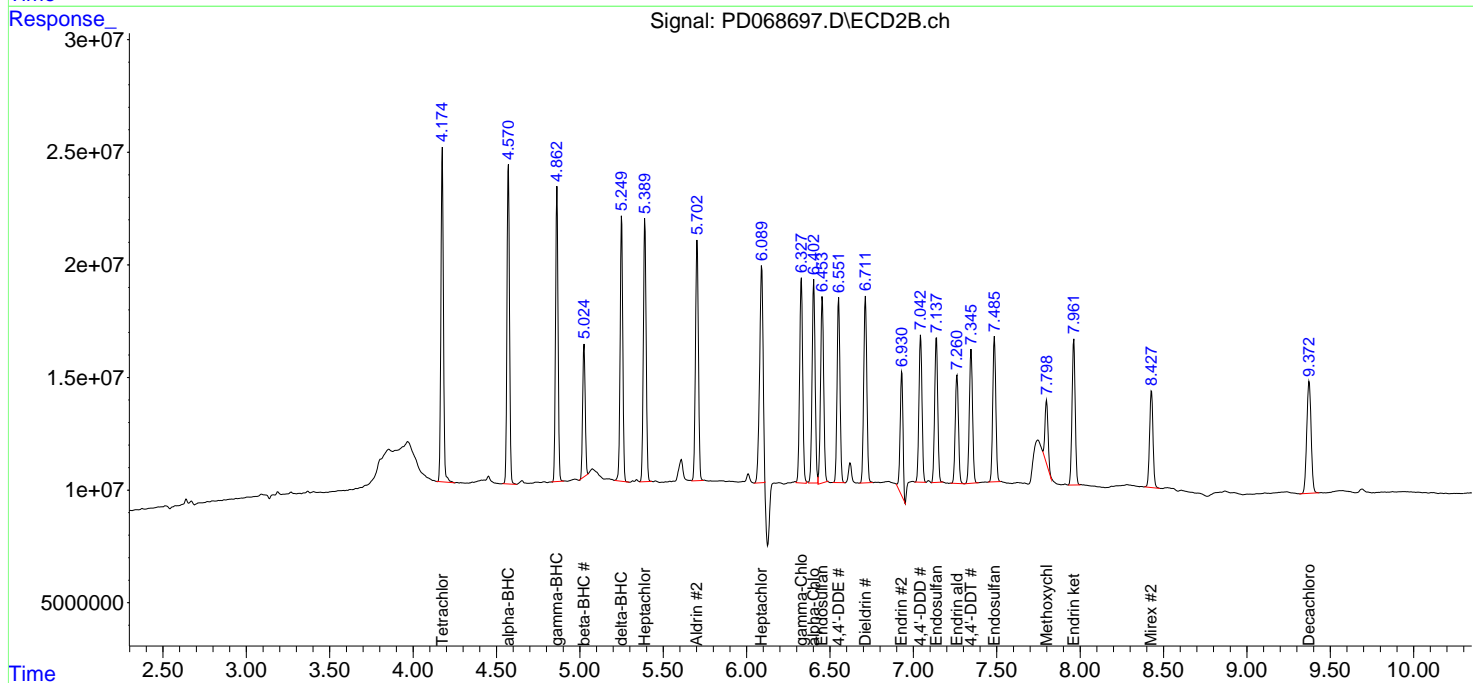
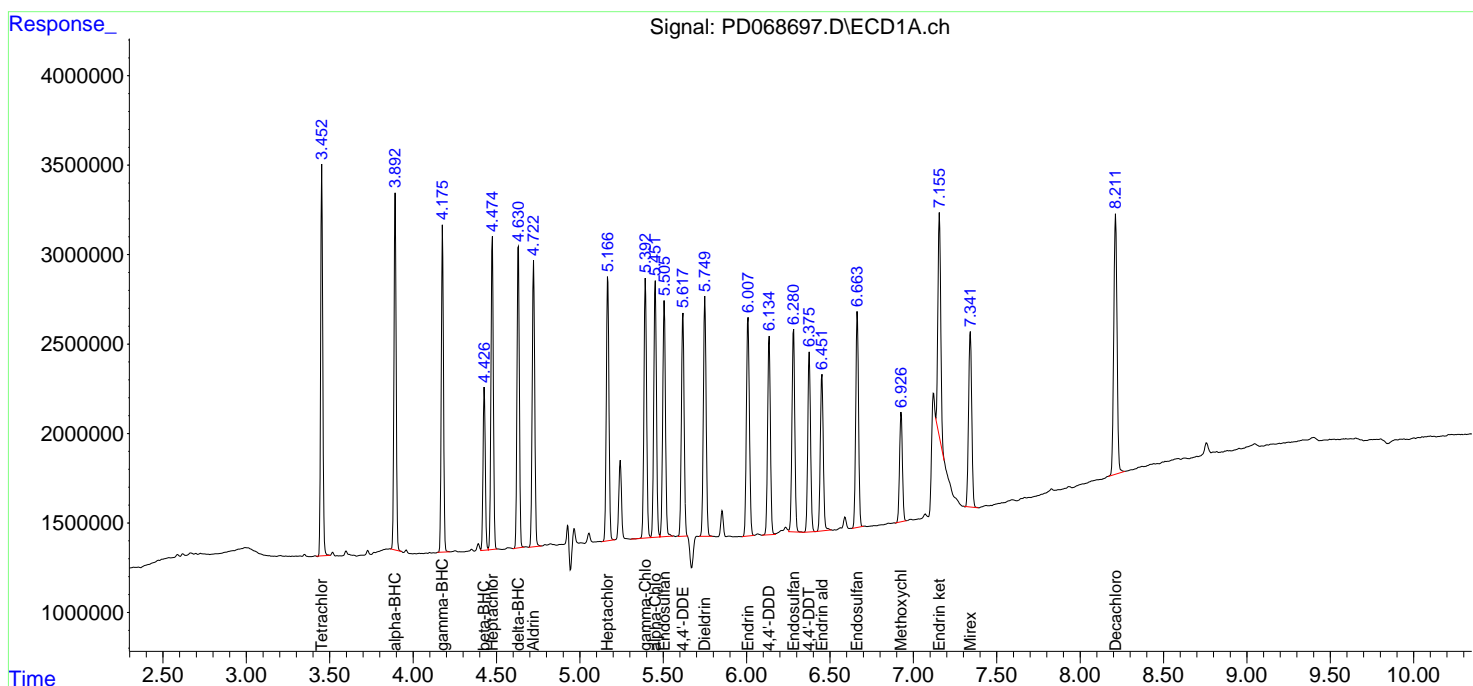
ECD_D
 ClientSampleId :
 PB143363BSD

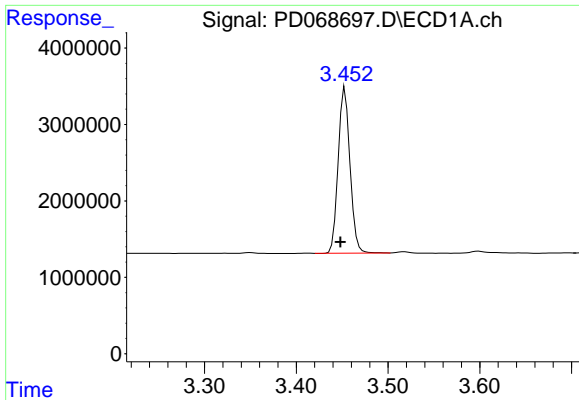
**Manual Integrations
 APPROVED**

Reviewed By :Abdul Mirza 03/21/2022
 Supervised By :mohammad ahmed 03/21/2022

Integration File signal 1: autoint1.e
 Integration File signal 2: autoint2.e
 Quant Time: Mar 19 00:49:46 2022
 Quant Method : Z:\pestpcbsrv\HPCHEM1\ECD_D\Method\PD031222.M
 Quant Title : GC Extractables
 QLast Update : Mon Mar 14 03:30:32 2022
 Response via : Initial Calibration
 Integrator: ChemStation

Volume Inj. : 2 µl
 Signal #1 Phase : ZB-MR2 Signal #2 Phase: ZB-MR1
 Signal #1 Info : 30M x 0.32mm x0.2 Signal #2 Info : 30M x 0.32mm x 0.50µm

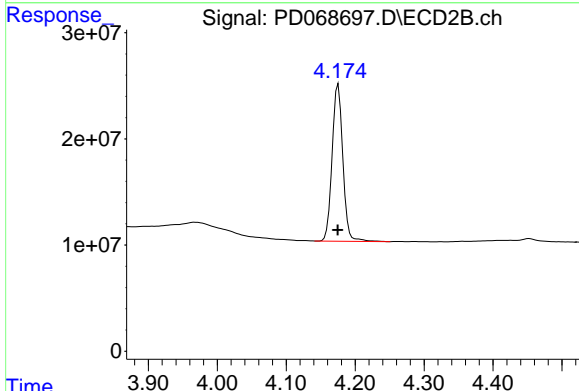




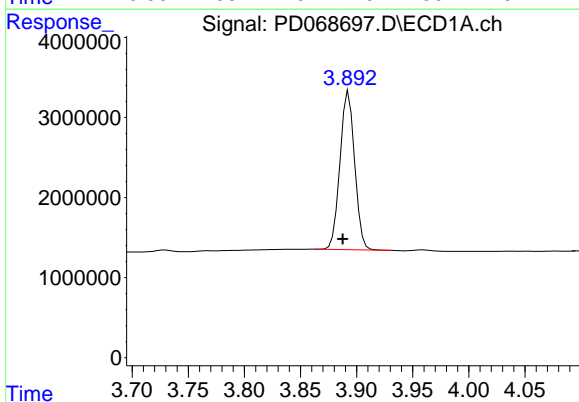
#1 Tetrachloro-m-xylene
 R.T.: 3.453 min
 Delta R.T.: 0.005 min
 Response: 19387727
 Conc: 15.97 ng/ml

Instrument : ECD_D
 Client Sample Id : PB143363BSD

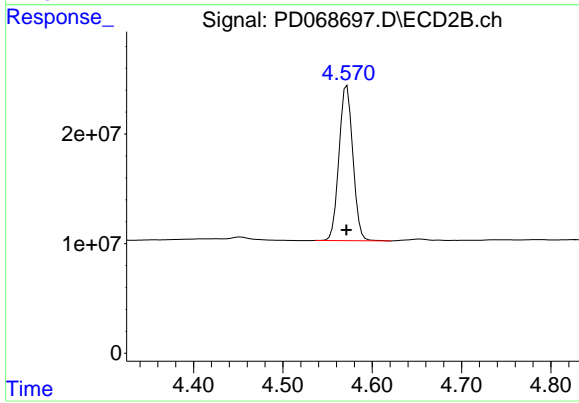
Manual Integrations
APPROVED
 Reviewed By :Abdul Mirza 03/21/2022
 Supervised By :mohammad ahmed 03/21/2022



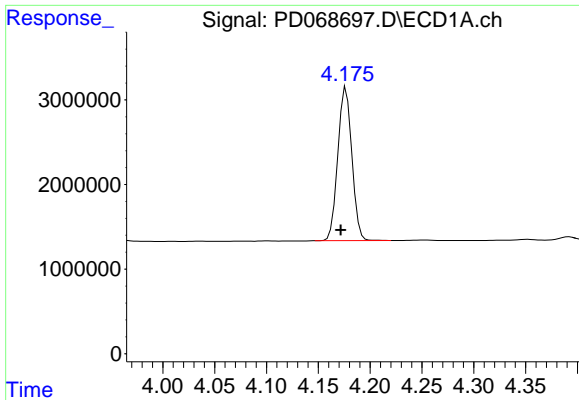
#1 Tetrachloro-m-xylene
 R.T.: 4.176 min
 Delta R.T.: 0.000 min
 Response: 159306621
 Conc: 16.66 ng/ml



#2 alpha-BHC
 R.T.: 3.893 min
 Delta R.T.: 0.005 min
 Response: 17992448
 Conc: 9.94 ng/ml



#2 alpha-BHC
 R.T.: 4.572 min
 Delta R.T.: 0.000 min
 Response: 152243047
 Conc: 11.06 ng/ml

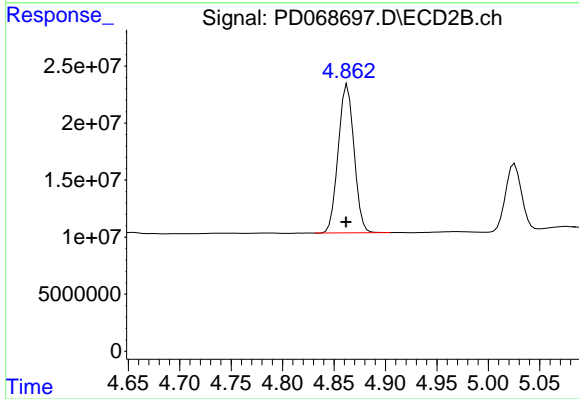


#3 gamma-BHC (Lindane)
 R.T.: 4.177 min
 Delta R.T.: 0.005 min
 Response: 17095198
 Conc: 10.24 ng/ml

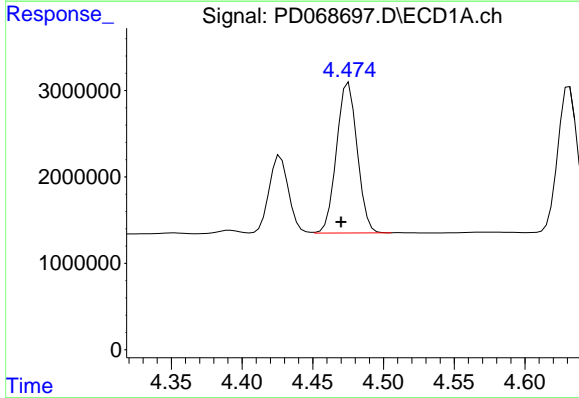
Instrument :
 ECD_D
 ClientSampleId :
 PB143363BSD

Manual Integrations
 APPROVED

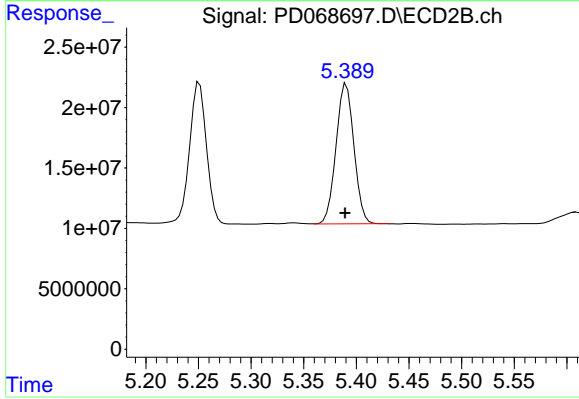
Reviewed By :Abdul Mirza 03/21/2022
 Supervised By :mohammad ahmed 03/21/2022



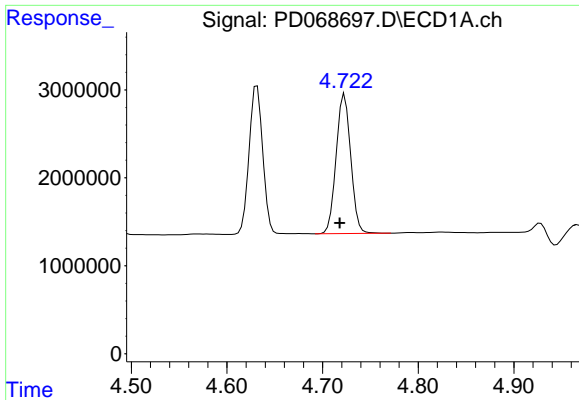
#3 gamma-BHC (Lindane)
 R.T.: 4.863 min
 Delta R.T.: 0.001 min
 Response: 139237664
 Conc: 11.14 ng/ml



#4 Heptachlor
 R.T.: 4.475 min
 Delta R.T.: 0.005 min
 Response: 17747827
 Conc: 10.77 ng/ml



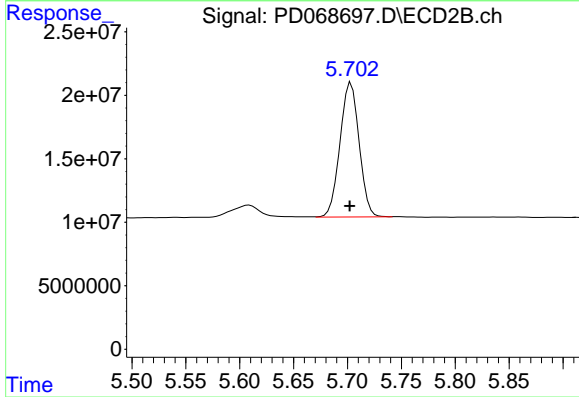
#4 Heptachlor
 R.T.: 5.391 min
 Delta R.T.: 0.001 min
 Response: 137676344
 Conc: 11.58 ng/ml



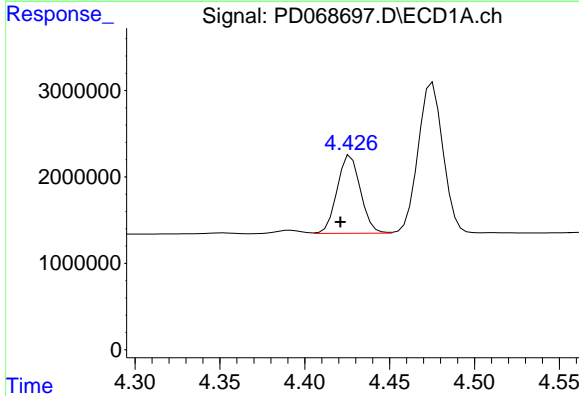
#5 Aldrin
 R.T.: 4.723 min
 Delta R.T.: 0.005 min
 Response: 16803566
 Conc: 10.51 ng/ml

Instrument : ECD_D
 ClientSampleId : PB143363BSD

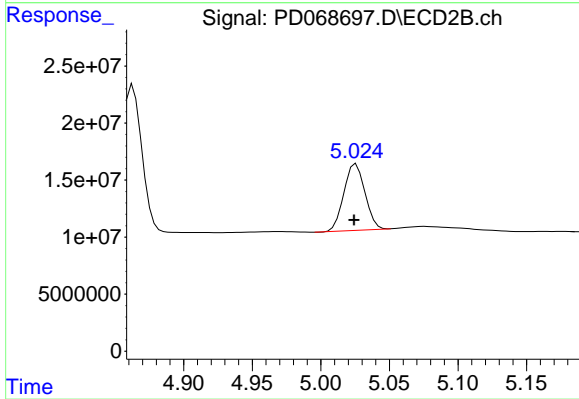
Manual Integrations
APPROVED
 Reviewed By :Abdul Mirza 03/21/2022
 Supervised By :mohammad ahmed 03/21/2022



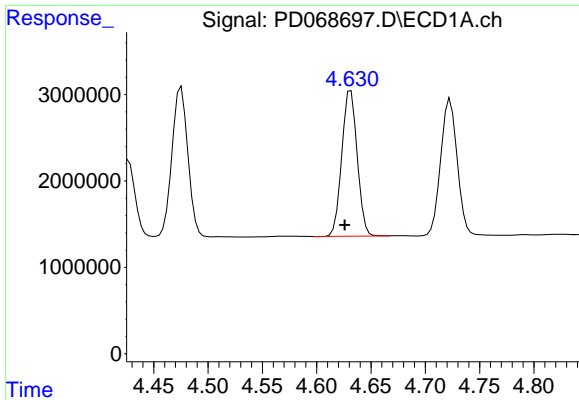
#5 Aldrin
 R.T.: 5.703 min
 Delta R.T.: 0.001 min
 Response: 131099217
 Conc: 11.42 ng/ml



#6 beta-BHC
 R.T.: 4.427 min
 Delta R.T.: 0.006 min
 Response: 8630281
 Conc: 11.59 ng/ml



#6 beta-BHC
 R.T.: 5.026 min
 Delta R.T.: 0.001 min
 Response: 62144638
 Conc: 11.32 ng/ml



#7 delta-BHC

R.T.: 4.632 min
 Delta R.T.: 0.006 min
 Response: 16633752
 Conc: 10.18 ng/ml

Instrument :

ECD_D

ClientSampleId :

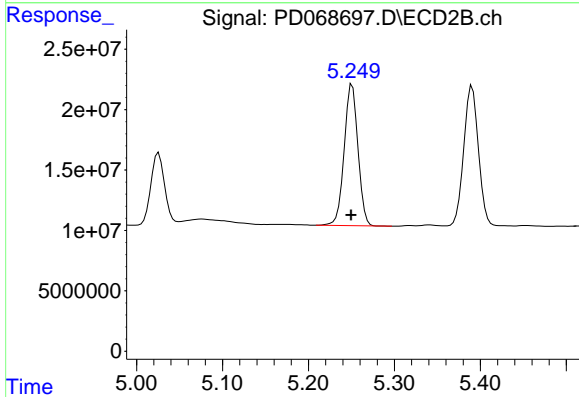
PB143363BSD

Manual Integrations

APPROVED

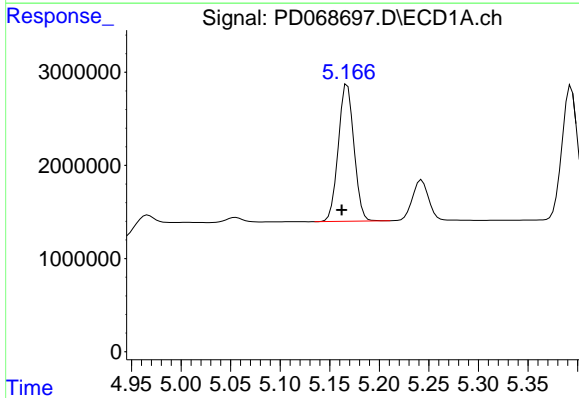
Reviewed By :Abdul Mirza 03/21/2022

Supervised By :mohammad ahmed 03/21/2022



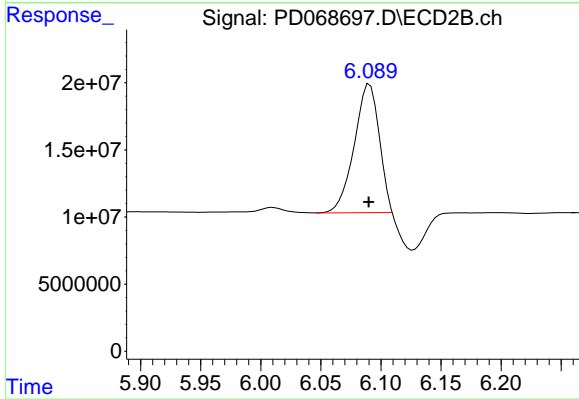
#7 delta-BHC

R.T.: 5.251 min
 Delta R.T.: 0.001 min
 Response: 131068454
 Conc: 10.90 ng/ml



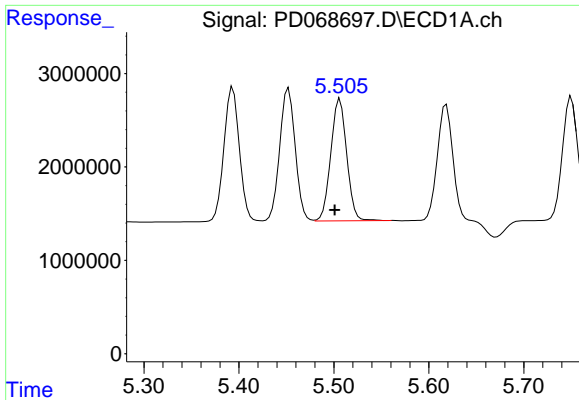
#8 Heptachlor epoxide

R.T.: 5.168 min
 Delta R.T.: 0.006 min
 Response: 16195113
 Conc: 10.83 ng/ml



#8 Heptachlor epoxide

R.T.: 6.089 min
 Delta R.T.: 0.000 min
 Response: 138431792
 Conc: 13.26 ng/ml m



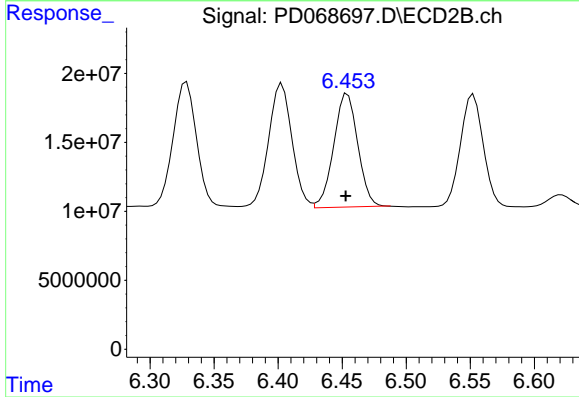
#9 Endosulfan I

R.T.: 5.507 min
 Delta R.T.: 0.005 min
 Response: 15209674
 Conc: 10.87 ng/ml

Instrument :
 ECD_D
 ClientSampleId :
 PB143363BSD

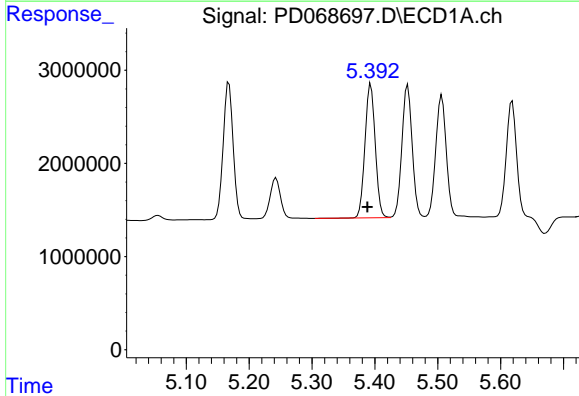
Manual Integrations
 APPROVED

Reviewed By :Abdul Mirza 03/21/2022
 Supervised By :mohammad ahmed 03/21/2022



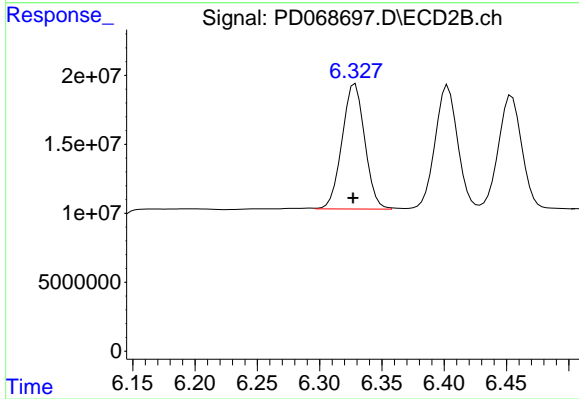
#9 Endosulfan I

R.T.: 6.453 min
 Delta R.T.: 0.000 min
 Response: 107164998
 Conc: 11.43 ng/ml m



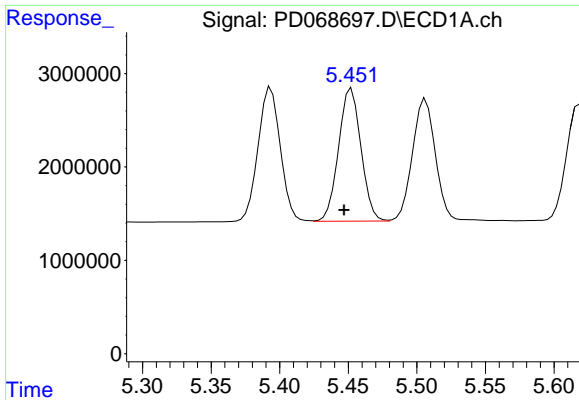
#10 gamma-Chlordane

R.T.: 5.394 min
 Delta R.T.: 0.006 min
 Response: 16282331
 Conc: 10.73 ng/ml



#10 gamma-Chlordane

R.T.: 6.327 min
 Delta R.T.: 0.000 min
 Response: 115500581
 Conc: 11.21 ng/ml m



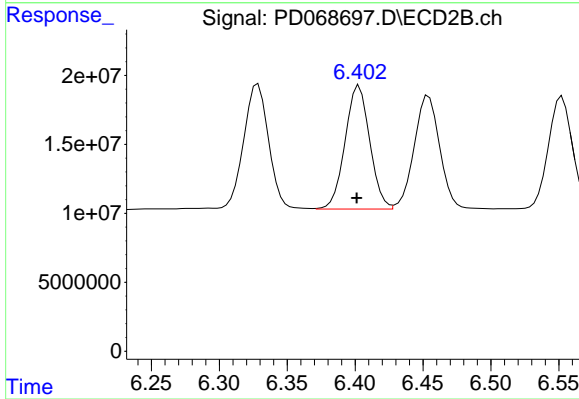
#11 alpha-Chlordane

R.T.: 5.452 min
 Delta R.T.: 0.005 min
 Response: 16195644
 Conc: 10.84 ng/ml

Instrument :
 ECD_D
 ClientSampleId :
 PB143363BSD

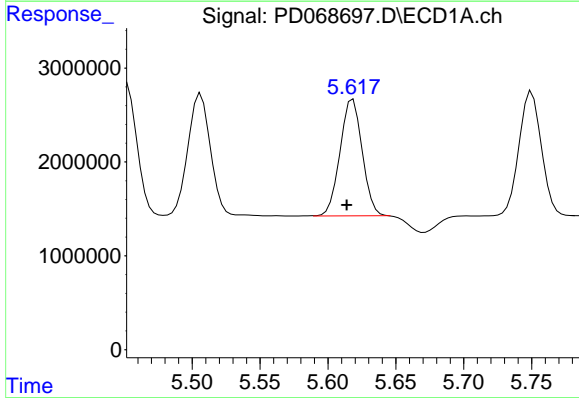
Manual Integrations
 APPROVED

Reviewed By :Abdul Mirza 03/21/2022
 Supervised By :mohammad ahmed 03/21/2022



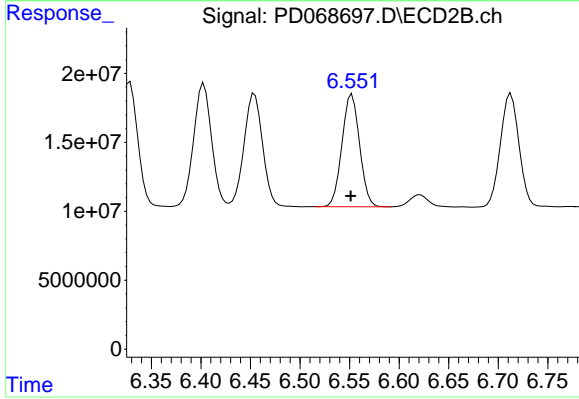
#11 alpha-Chlordane

R.T.: 6.402 min
 Delta R.T.: 0.000 min
 Response: 113077541
 Conc: 11.36 ng/ml m



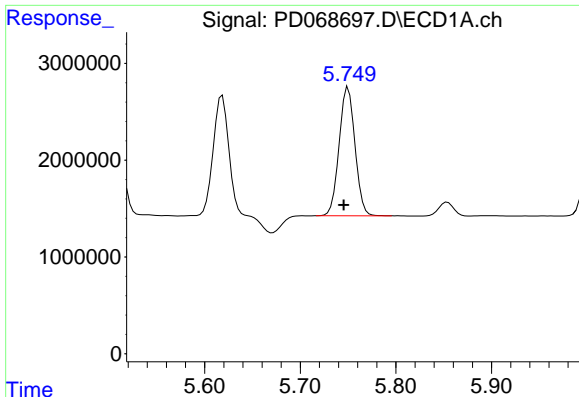
#12 4,4'-DDE

R.T.: 5.617 min
 Delta R.T.: 0.003 min
 Response: 14129465
 Conc: 10.33 ng/ml m



#12 4,4'-DDE

R.T.: 6.553 min
 Delta R.T.: 0.001 min
 Response: 100890533
 Conc: 10.89 ng/ml



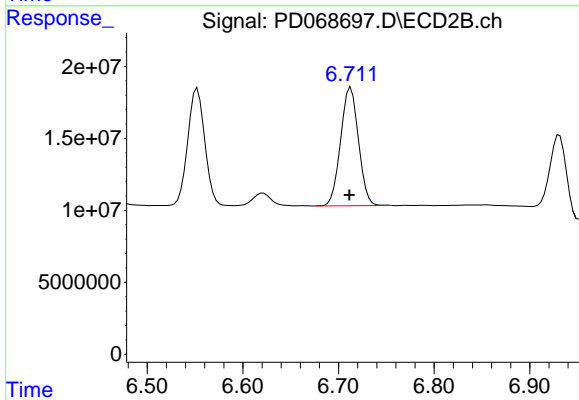
#13 Dieldrin

R.T.: 5.750 min
 Delta R.T.: 0.005 min
 Response: 15338223
 Conc: 10.50 ng/ml

Instrument :
 ECD_D
 ClientSampleId :
 PB143363BSD

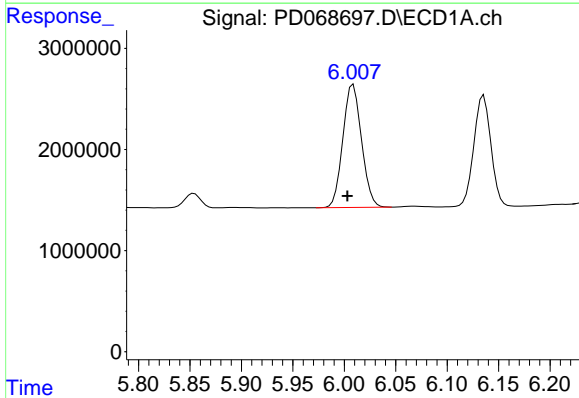
Manual Integrations
 APPROVED

Reviewed By :Abdul Mirza 03/21/2022
 Supervised By :mohammad ahmed 03/21/2022



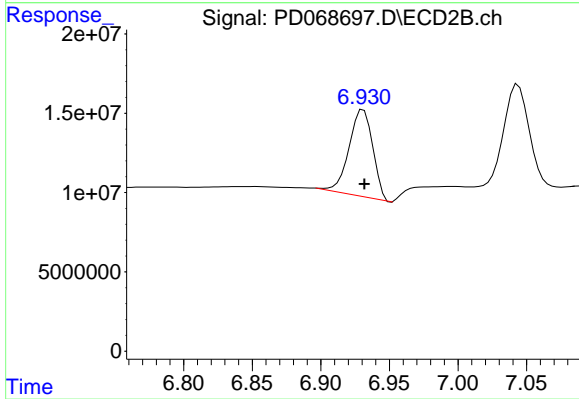
#13 Dieldrin

R.T.: 6.713 min
 Delta R.T.: 0.001 min
 Response: 107079760
 Conc: 11.02 ng/ml



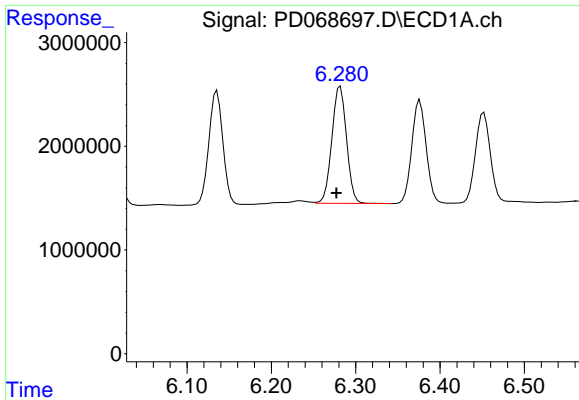
#14 Endrin

R.T.: 6.009 min
 Delta R.T.: 0.006 min
 Response: 15377980
 Conc: 11.67 ng/ml



#14 Endrin

R.T.: 6.931 min
 Delta R.T.: 0.000 min
 Response: 66275563
 Conc: 8.57 ng/ml



#15 Endosulfan II

R.T.: 6.282 min
 Delta R.T.: 0.005 min
 Response: 13636371
 Conc: 10.94 ng/ml

Instrument :

ECD_D

ClientSampleId :

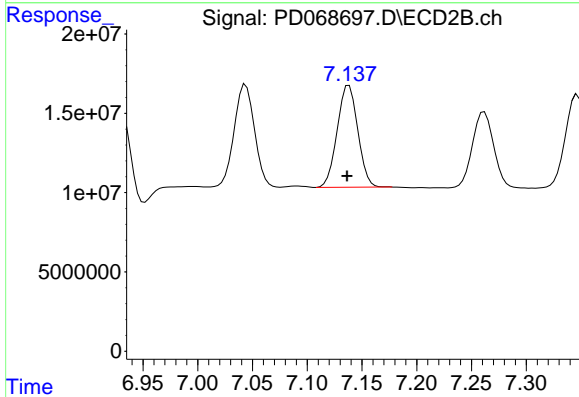
PB143363BSD

Manual Integrations

APPROVED

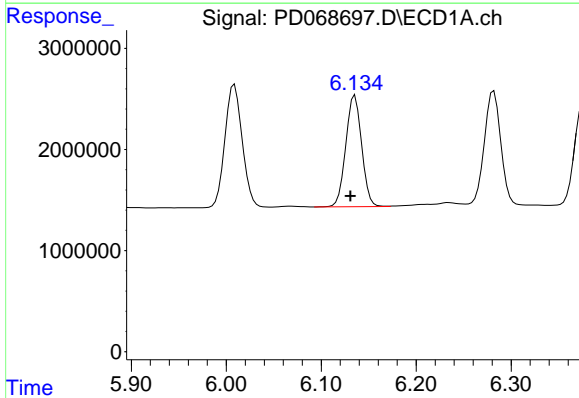
Reviewed By :Abdul Mirza 03/21/2022

Supervised By :mohammad ahmed 03/21/2022



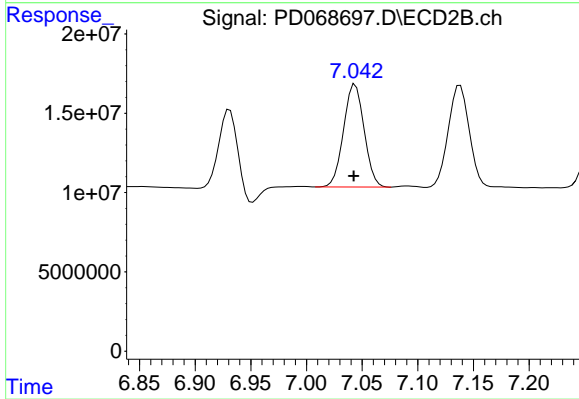
#15 Endosulfan II

R.T.: 7.138 min
 Delta R.T.: 0.002 min
 Response: 84064308
 Conc: 11.12 ng/ml



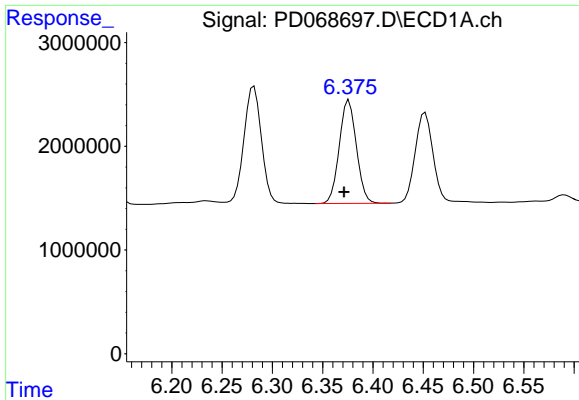
#16 4,4'-DDD

R.T.: 6.136 min
 Delta R.T.: 0.005 min
 Response: 12804560
 Conc: 10.86 ng/ml



#16 4,4'-DDD

R.T.: 7.044 min
 Delta R.T.: 0.001 min
 Response: 83359009
 Conc: 11.29 ng/ml



#17 4,4'-DDT

R.T.: 6.376 min
 Delta R.T.: 0.005 min
 Response: 11776331
 Conc: 9.80 ng/ml

Instrument :

ECD_D

ClientSampleId :

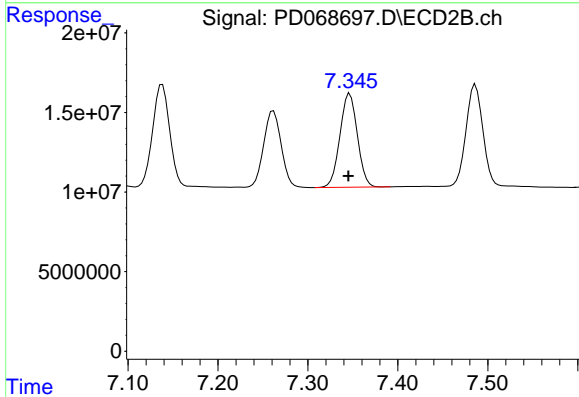
PB143363BSD

Manual Integrations

APPROVED

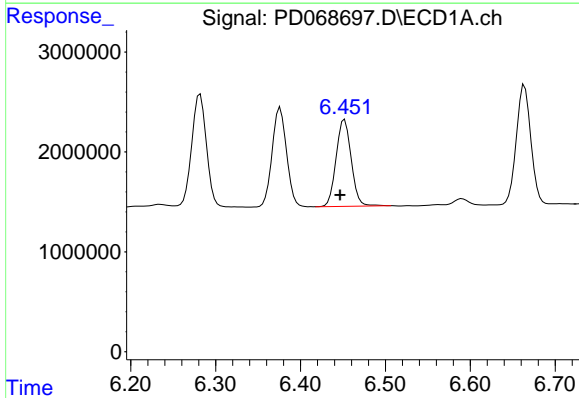
Reviewed By :Abdul Mirza 03/21/2022

Supervised By :mohammad ahmed 03/21/2022



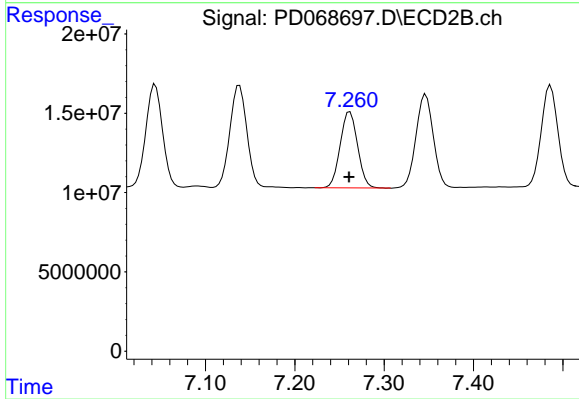
#17 4,4'-DDT

R.T.: 7.347 min
 Delta R.T.: 0.002 min
 Response: 79399148
 Conc: 10.81 ng/ml



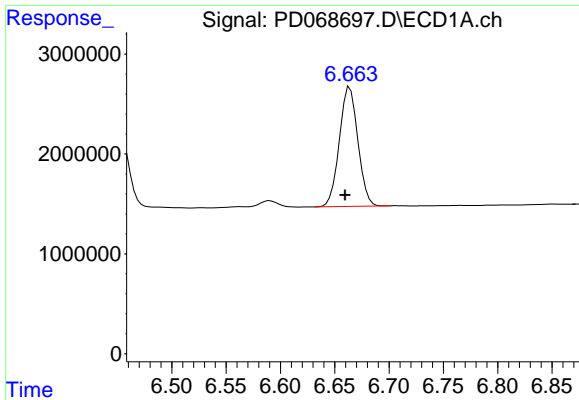
#18 Endrin aldehyde

R.T.: 6.452 min
 Delta R.T.: 0.005 min
 Response: 10768594
 Conc: 10.85 ng/ml



#18 Endrin aldehyde

R.T.: 7.262 min
 Delta R.T.: 0.000 min
 Response: 65000456
 Conc: 10.74 ng/ml

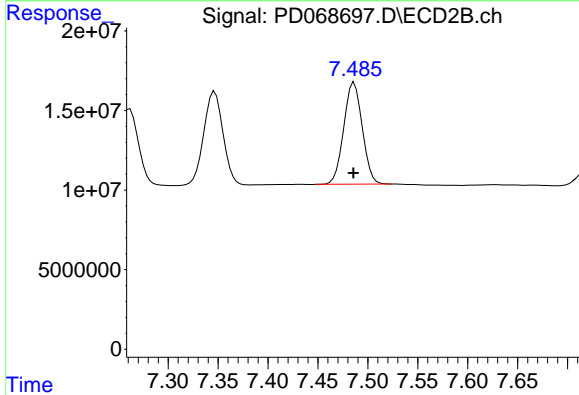


#19 Endosulfan Sulfate
 R.T.: 6.664 min
 Delta R.T.: 0.004 min
 Response: 14216121
 Conc: 11.12 ng/ml

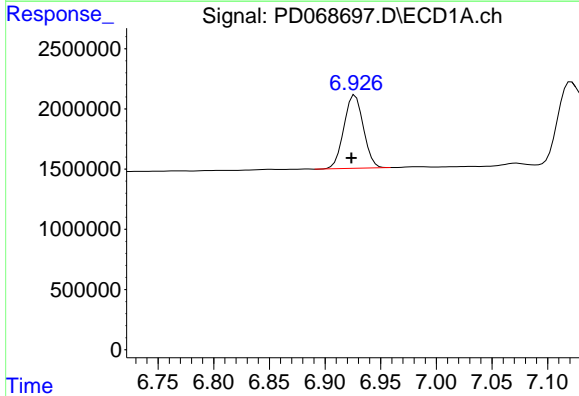
Instrument :
 ECD_D
 ClientSampleId :
 PB143363BSD

Manual Integrations
 APPROVED

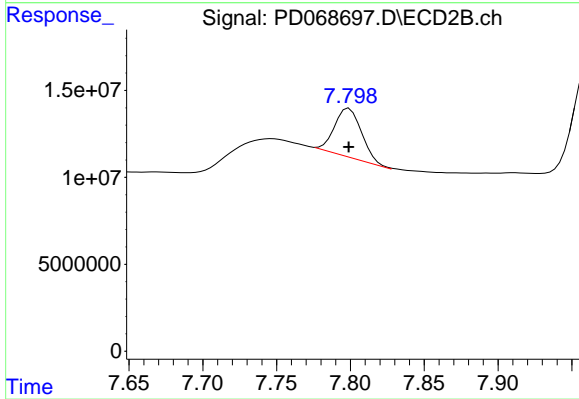
Reviewed By :Abdul Mirza 03/21/2022
 Supervised By :mohammad ahmed 03/21/2022



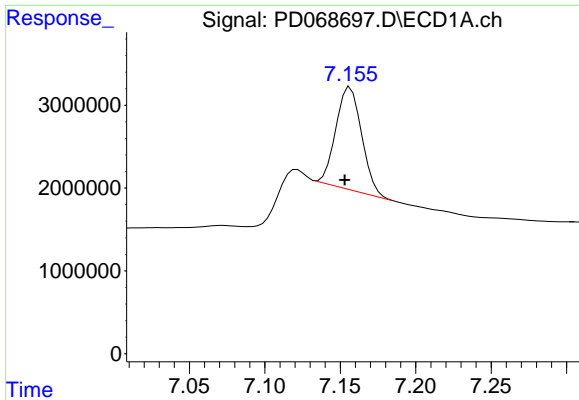
#19 Endosulfan Sulfate
 R.T.: 7.486 min
 Delta R.T.: 0.000 min
 Response: 82662734
 Conc: 11.24 ng/ml



#20 Methoxychlor
 R.T.: 6.927 min
 Delta R.T.: 0.003 min
 Response: 7407330
 Conc: 10.69 ng/ml



#20 Methoxychlor
 R.T.: 7.798 min
 Delta R.T.: 0.000 min
 Response: 35450279
 Conc: 9.72 ng/ml m



#21 Endrin ketone
 R.T.: 7.155 min
 Delta R.T.: 0.002 min
 Response: 14716268
 Conc: 10.00 ng/ml

Instrument :

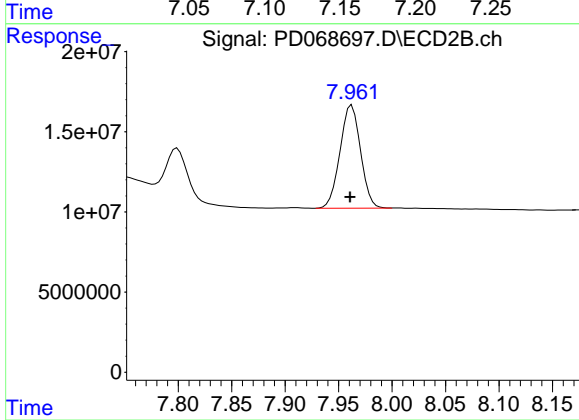
ECD_D

ClientSampleId :

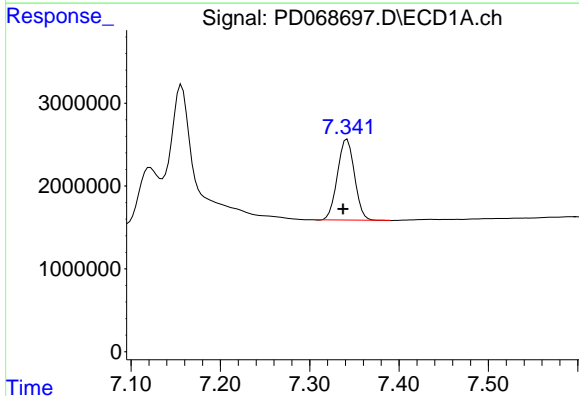
PB143363BSD

Manual Integrations
 APPROVED

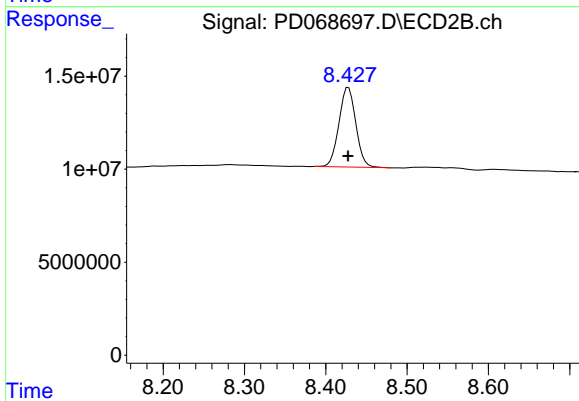
Reviewed By :Abdul Mirza 03/21/2022
 Supervised By :mohammad ahmed 03/21/2022



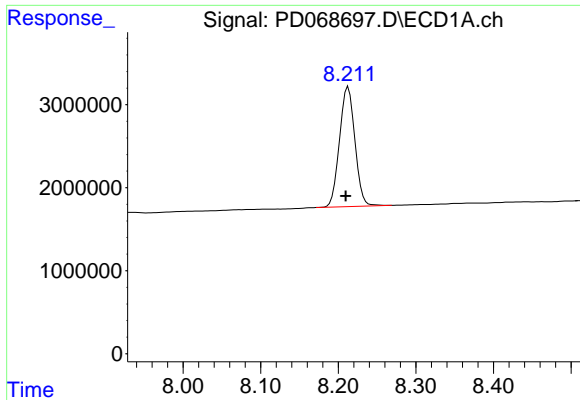
#21 Endrin ketone
 R.T.: 7.962 min
 Delta R.T.: 0.002 min
 Response: 86320776
 Conc: 11.14 ng/ml



#22 Mirex
 R.T.: 7.342 min
 Delta R.T.: 0.004 min
 Response: 12934003
 Conc: 10.91 ng/ml



#22 Mirex
 R.T.: 8.428 min
 Delta R.T.: 0.000 min
 Response: 61675421
 Conc: 11.25 ng/ml



#28 Decachlorobiphenyl

R.T.: 8.213 min
Delta R.T.: 0.003 min
Response: 19918408
Conc: 15.77 ng/ml

Instrument :

ECD_D

ClientSampleId :

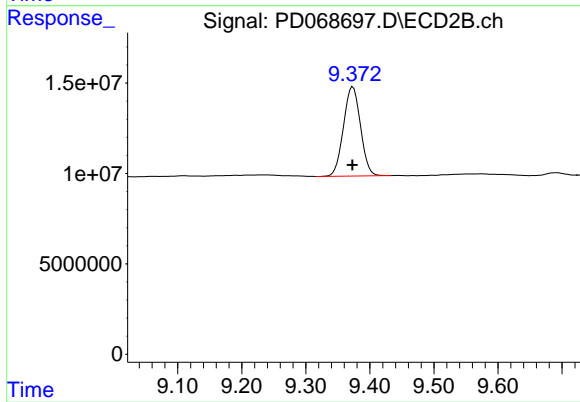
PB143363BSD

Manual Integrations

APPROVED

Reviewed By :Abdul Mirza 03/21/2022

Supervised By :mohammad ahmed 03/21/2022



#28 Decachlorobiphenyl

R.T.: 9.373 min
Delta R.T.: 0.000 min
Response: 91077773
Conc: 16.07 ng/ml